

EXTRACTION OIL & GAS

Adams County

Sec 12-T1S-R66W

DUCK CLUB 12W-20-4N

ORIGINAL WELLBORE

Plan: PROPOSAL 1

Standard Planning Report

26 March, 2018



WELL DETAILS: DUCK CLUB 12W-20-4N

+N/-S	+E/-W	Northing	Easting	5036.00	Latitude	Longitude	Slot
0.00	0.00	1236211.80	3215517.87	39° 58' 45.192 N	104° 43' 51.384 W		

SECTION DETAILS

Sec	MD	Inc	Azi	TVD	+N/-S	+E/-W	Dleg	TFace	Vsect	Target
1	0.00	0.00	0.00	0.00	0.00	0.00	0.00	0.00	0.00	
2	700.00	0.00	0.00	700.00	0.00	0.00	0.00	0.00	0.00	
3	2051.62	27.03	60.77	2002.03	152.83	273.13	2.00	60.77	-248.05	
4	5849.48	27.03	60.77	5384.97	995.72	1779.44	0.00	0.00	-1616.06	
5	7201.10	0.00	0.00	6687.00	1148.55	2052.57	2.00	180.00	-1864.11	
6	7231.10	0.00	0.00	6717.00	1148.55	2052.57	0.00	0.00	-1864.11	
7	8131.15	90.00	270.26	7290.00	1151.15	1479.59	10.00	270.26	-1296.82	DC 4N - LP
8	17757.01	90.00	270.26	7290.00	1195.16	-8146.17	0.00	0.00	8233.38	DC 4N - PBHL

ANNOTATIONS

MD	Inc	Azi	TVD	+N/-S	+E/-W	Vsect	Departure	Annotation
700.00	0.00	0.00	700.00	0.00	0.00	0.00	0.00	Start Build 2.00
2051.62	27.03	60.77	2002.03	152.83	273.13	-248.05	312.98	Start 3797.86 hold at 2051.62 MD
5849.48	27.03	60.77	5384.97	995.72	1779.44	-1616.06	2039.09	Start Drop -2.00
7201.10	0.00	0.00	6687.00	1148.55	2052.57	-1864.11	2352.07	Start 30.00 hold at 7201.10 MD
7231.10	0.00	0.00	6717.00	1148.55	2052.57	-1864.11	2352.07	Start DLS 10.00 TFO 270.26
8131.15	90.00	270.26	7290.00	1151.15	1479.59	-1296.82	2925.05	Start 9625.87 hold at 8131.15 MD
17757.01	90.00	270.26	7290.00	1195.16	-8146.17	8233.38	12550.91	TD at 17757.01

DESIGN TARGET DETAILS

Name	TVD	+N/-S	+E/-W	Northing	Easting	Latitude	Longitude	Shape
DC 4N - LP	7290.00	1151.15	1479.59	1237375.74	3216987.42	39° 58' 56.568 N	104° 43' 32.376 W	Point
- plan hits target center								
DC 4N - PBHL	7290.00	1195.16	-8146.17	1237336.27	3207361.64	39° 58' 56.990 N	104° 45' 36.036 W	Point
- plan hits target center								

FORMATION TOP DETAILS

TVDPath	MDPath	Formation
3900.00	4182.38	PARKMAN
4755.00	5142.24	SUSSEX
7080.00	7598.82	SHARON SPRINGS
7086.00	7632.02	NIOBRARA
7280.00	8023.96	NIO B

PROJECT DETAILS: Adams County

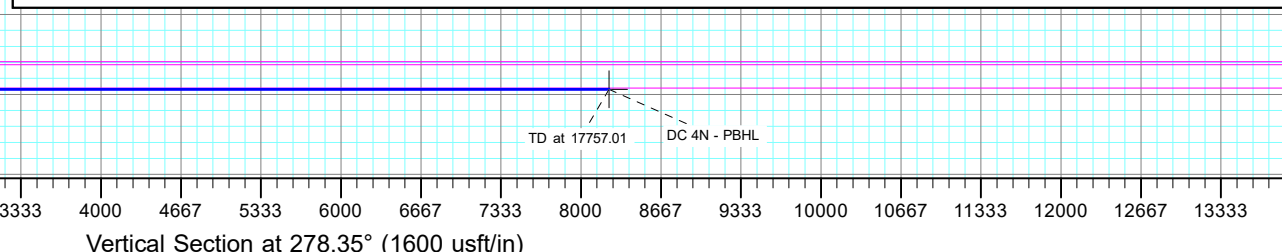
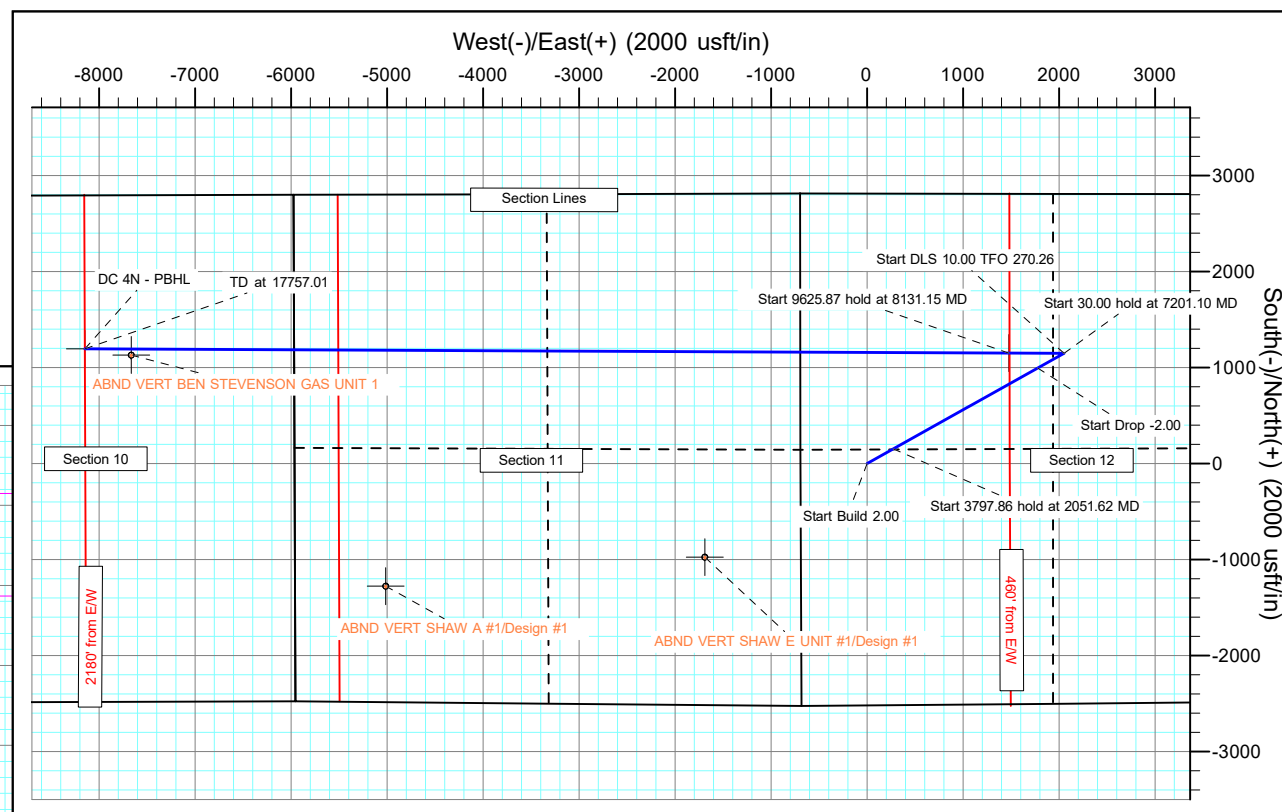
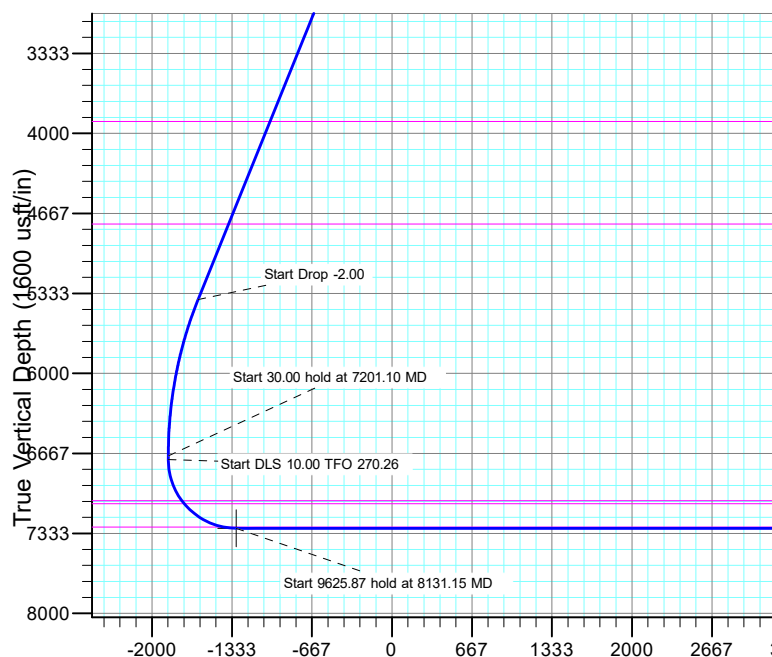
Geodetic System: US State Plane 1983
Datum: North American Datum 1983
Ellipsoid: GRS 1980
Zone: Colorado Northern Zone

System Datum: Mean Sea Level

SHL:
2519' FSL, 691' FWL
Sec 12-T1S-R66W

LP:
1660' FNL, 2174' FWL
Sec 12-T1S-R66W

BHL:
1598' FNL, 2179' FEL
Sec 10-T1S-R66W



Planning Report

Database:	EDT_32Bit_ODBC	Local Co-ordinate Reference:	Well DUCK CLUB 12W-20-4N
Company:	EXTRACTION OIL & GAS	TVD Reference:	KB 25' @ 5061.00usft
Project:	Adams County	MD Reference:	KB 25' @ 5061.00usft
Site:	Sec 12-T1S-R66W	North Reference:	True
Well:	DUCK CLUB 12W-20-4N	Survey Calculation Method:	Minimum Curvature
Wellbore:	ORIGINAL WELLBORE		
Design:	PROPOSAL 1		

Project	Adams County		
Map System:	US State Plane 1983	System Datum:	Mean Sea Level
Geo Datum:	North American Datum 1983		
Map Zone:	Colorado Northern Zone		

Site		Sec 12-T1S-R66W			
Site Position:		Northing:	1,239,018.46 usft	Latitude:	39° 59' 12.990 N
From:	Lat/Long	Easting:	3,214,796.41 usft	Longitude:	104° 44' 0.340 W
Position Uncertainty:	0.00 usft	Slot Radius:	13.200 in	Grid Convergence:	0.50 °

Well	DUCK CLUB 12W-20-4N					
Well Position	+N/-S	-2,812.79 usft	Northing:	1,236,211.80 usft	Latitude:	39° 58' 45.192 N
	+E/-W	697.17 usft	Easting:	3,215,517.87 usft	Longitude:	104° 43' 51.384 W
Position Uncertainty	0.00 usft		Wellhead Elevation:		Ground Level:	5,036.00 usft

Wellbore	ORIGINAL WELLBORE				
Magnetics	Model Name	Sample Date	Declination (°)	Dip Angle (°)	Field Strength (nT)
	IGRF2015	10/10/2017	8.12	66.51	52,138.74906646

Design	PROPOSAL 1			
Audit Notes:				
Version:	Phase:	PROTOTYPE	Tie On Depth:	0.00
Vertical Section:	Depth From (TVD) (usft)	+N/-S (usft)	+E/-W (usft)	Direction (°)
	0.00	0.00	0.00	278.35

Plan Survey Tool Program	Date	3/26/2018		
Depth From (usft)	Depth To (usft)	Survey (Wellbore)	Tool Name	Remarks
1	0.00	17,757.00	PROPOSAL 1 (ORIGINAL WELL	MWD OWSG
			OWSG MWD - Standard	

Plan Sections										
Measured Depth (usft)	Inclination (°)	Azimuth (°)	Vertical Depth (usft)	+N/-S (usft)	+E/-W (usft)	Dogleg Rate (°/100ft)	Build Rate (°/100ft)	Turn Rate (°/100ft)	TFO (°)	Target
0.00	0.00	0.00	0.00	0.00	0.00	0.00	0.00	0.00	0.00	
700.00	0.00	0.00	700.00	0.00	0.00	0.00	0.00	0.00	0.00	
2,051.62	27.03	60.77	2,002.03	152.83	273.13	2.00	2.00	0.00	60.77	
5,849.48	27.03	60.77	5,384.97	995.72	1,779.44	0.00	0.00	0.00	0.00	
7,201.10	0.00	0.00	6,687.00	1,148.55	2,052.57	2.00	-2.00	0.00	180.00	
7,231.10	0.00	0.00	6,717.00	1,148.55	2,052.57	0.00	0.00	0.00	0.00	
8,131.15	90.00	270.26	7,290.00	1,151.15	1,479.59	10.00	10.00	-9.97	270.26	DC 4N - LP
17,757.01	90.00	270.26	7,290.00	1,195.16	-8,146.17	0.00	0.00	0.00	0.00	DC 4N - PBHL

Planning Report

Database:	EDT_32Bit_ODBC	Local Co-ordinate Reference:	Well DUCK CLUB 12W-20-4N
Company:	EXTRACTION OIL & GAS	TVD Reference:	KB 25' @ 5061.00usft
Project:	Adams County	MD Reference:	KB 25' @ 5061.00usft
Site:	Sec 12-T1S-R66W	North Reference:	True
Well:	DUCK CLUB 12W-20-4N	Survey Calculation Method:	Minimum Curvature
Wellbore:	ORIGINAL WELLBORE		
Design:	PROPOSAL 1		

Planned Survey									
Measured Depth (usft)	Inclination (°)	Azimuth (°)	Vertical Depth (usft)	+N/-S (usft)	+E/-W (usft)	Vertical Section (usft)	Dogleg Rate (°/100ft)	Build Rate (°/100ft)	Turn Rate (°/100ft)
0.00	0.00	0.00	0.00	0.00	0.00	0.00	0.00	0.00	0.00
100.00	0.00	0.00	100.00	0.00	0.00	0.00	0.00	0.00	0.00
200.00	0.00	0.00	200.00	0.00	0.00	0.00	0.00	0.00	0.00
300.00	0.00	0.00	300.00	0.00	0.00	0.00	0.00	0.00	0.00
400.00	0.00	0.00	400.00	0.00	0.00	0.00	0.00	0.00	0.00
500.00	0.00	0.00	500.00	0.00	0.00	0.00	0.00	0.00	0.00
600.00	0.00	0.00	600.00	0.00	0.00	0.00	0.00	0.00	0.00
700.00	0.00	0.00	700.00	0.00	0.00	0.00	0.00	0.00	0.00
Start Build 2.00									
800.00	2.00	60.77	799.98	0.85	1.52	-1.38	2.00	2.00	0.00
900.00	4.00	60.77	899.84	3.41	6.09	-5.53	2.00	2.00	0.00
1,000.00	6.00	60.77	999.45	7.66	13.70	-12.44	2.00	2.00	0.00
1,100.00	8.00	60.77	1,098.70	13.61	24.33	-22.10	2.00	2.00	0.00
1,200.00	10.00	60.77	1,197.47	21.25	37.98	-34.49	2.00	2.00	0.00
1,300.00	12.00	60.77	1,295.62	30.57	54.63	-49.62	2.00	2.00	0.00
1,400.00	14.00	60.77	1,393.06	41.55	74.26	-67.44	2.00	2.00	0.00
1,500.00	16.00	60.77	1,489.64	54.19	96.85	-87.95	2.00	2.00	0.00
1,600.00	18.00	60.77	1,585.27	68.47	122.36	-111.12	2.00	2.00	0.00
1,700.00	20.00	60.77	1,679.82	84.37	150.77	-136.93	2.00	2.00	0.00
1,800.00	22.00	60.77	1,773.17	101.86	182.04	-165.33	2.00	2.00	0.00
1,900.00	24.00	60.77	1,865.21	120.94	216.14	-196.29	2.00	2.00	0.00
2,000.00	26.00	60.77	1,955.84	141.58	253.02	-229.78	2.00	2.00	0.00
2,051.62	27.03	60.77	2,002.03	152.83	273.13	-248.05	2.00	2.00	0.00
Start 3797.86 hold at 2051.62 MD									
2,100.00	27.03	60.77	2,045.12	163.57	292.32	-265.48	0.00	0.00	0.00
2,200.00	27.03	60.77	2,134.20	185.76	331.98	-301.50	0.00	0.00	0.00
2,300.00	27.03	60.77	2,223.27	207.96	371.64	-337.52	0.00	0.00	0.00
2,400.00	27.03	60.77	2,312.35	230.15	411.30	-373.54	0.00	0.00	0.00
2,500.00	27.03	60.77	2,401.42	252.34	450.96	-409.56	0.00	0.00	0.00
2,600.00	27.03	60.77	2,490.50	274.54	490.63	-445.58	0.00	0.00	0.00
2,700.00	27.03	60.77	2,579.57	296.73	530.29	-481.60	0.00	0.00	0.00
2,800.00	27.03	60.77	2,668.65	318.93	569.95	-517.62	0.00	0.00	0.00
2,900.00	27.03	60.77	2,757.72	341.12	609.61	-553.64	0.00	0.00	0.00
3,000.00	27.03	60.77	2,846.80	363.31	649.28	-589.66	0.00	0.00	0.00
3,100.00	27.03	60.77	2,935.87	385.51	688.94	-625.68	0.00	0.00	0.00
3,200.00	27.03	60.77	3,024.95	407.70	728.60	-661.70	0.00	0.00	0.00
3,300.00	27.03	60.77	3,114.02	429.89	768.26	-697.72	0.00	0.00	0.00
3,400.00	27.03	60.77	3,203.10	452.09	807.92	-733.74	0.00	0.00	0.00
3,500.00	27.03	60.77	3,292.17	474.28	847.59	-769.76	0.00	0.00	0.00
3,600.00	27.03	60.77	3,381.25	496.48	887.25	-805.78	0.00	0.00	0.00
3,700.00	27.03	60.77	3,470.32	518.67	926.91	-841.80	0.00	0.00	0.00
3,800.00	27.03	60.77	3,559.40	540.86	966.57	-877.82	0.00	0.00	0.00
3,900.00	27.03	60.77	3,648.47	563.06	1,006.24	-913.84	0.00	0.00	0.00
4,000.00	27.03	60.77	3,737.55	585.25	1,045.90	-949.87	0.00	0.00	0.00
4,100.00	27.03	60.77	3,826.62	607.44	1,085.56	-985.89	0.00	0.00	0.00
4,182.38	27.03	60.77	3,900.00	625.73	1,118.23	-1,015.56	0.00	0.00	0.00
PARKMAN									
4,200.00	27.03	60.77	3,915.70	629.64	1,125.22	-1,021.91	0.00	0.00	0.00
4,300.00	27.03	60.77	4,004.77	651.83	1,164.89	-1,057.93	0.00	0.00	0.00
4,400.00	27.03	60.77	4,093.85	674.02	1,204.55	-1,093.95	0.00	0.00	0.00
4,500.00	27.03	60.77	4,182.92	696.22	1,244.21	-1,129.97	0.00	0.00	0.00
4,600.00	27.03	60.77	4,272.00	718.41	1,283.87	-1,165.99	0.00	0.00	0.00
4,700.00	27.03	60.77	4,361.07	740.61	1,323.53	-1,202.01	0.00	0.00	0.00

Planning Report

Database:	EDT_32Bit_ODBC	Local Co-ordinate Reference:	Well DUCK CLUB 12W-20-4N
Company:	EXTRACTION OIL & GAS	TVD Reference:	KB 25' @ 5061.00usft
Project:	Adams County	MD Reference:	KB 25' @ 5061.00usft
Site:	Sec 12-T1S-R66W	North Reference:	True
Well:	DUCK CLUB 12W-20-4N	Survey Calculation Method:	Minimum Curvature
Wellbore:	ORIGINAL WELLBORE		
Design:	PROPOSAL 1		

Planned Survey									
Measured Depth (usft)	Inclination (°)	Azimuth (°)	Vertical Depth (usft)	+N/-S (usft)	+E/-W (usft)	Vertical Section (usft)	Dogleg Rate (°/100ft)	Build Rate (°/100ft)	Turn Rate (°/100ft)
4,800.00	27.03	60.77	4,450.15	762.80	1,363.20	-1,238.03	0.00	0.00	0.00
4,900.00	27.03	60.77	4,539.22	784.99	1,402.86	-1,274.05	0.00	0.00	0.00
5,000.00	27.03	60.77	4,628.30	807.19	1,442.52	-1,310.07	0.00	0.00	0.00
5,100.00	27.03	60.77	4,717.37	829.38	1,482.18	-1,346.09	0.00	0.00	0.00
5,142.24	27.03	60.77	4,755.00	838.76	1,498.94	-1,361.31	0.00	0.00	0.00
SUSSEX									
5,200.00	27.03	60.77	4,806.45	851.57	1,521.85	-1,382.11	0.00	0.00	0.00
5,300.00	27.03	60.77	4,895.52	873.77	1,561.51	-1,418.13	0.00	0.00	0.00
5,400.00	27.03	60.77	4,984.60	895.96	1,601.17	-1,454.15	0.00	0.00	0.00
5,500.00	27.03	60.77	5,073.67	918.16	1,640.83	-1,490.17	0.00	0.00	0.00
5,600.00	27.03	60.77	5,162.75	940.35	1,680.49	-1,526.19	0.00	0.00	0.00
5,700.00	27.03	60.77	5,251.82	962.54	1,720.16	-1,562.21	0.00	0.00	0.00
5,800.00	27.03	60.77	5,340.90	984.74	1,759.82	-1,598.23	0.00	0.00	0.00
5,849.48	27.03	60.77	5,384.97	995.72	1,779.44	-1,616.06	0.00	0.00	0.00
Start Drop -2.00									
5,900.00	26.02	60.77	5,430.17	1,006.74	1,799.13	-1,633.94	2.00	-2.00	0.00
6,000.00	24.02	60.77	5,520.78	1,027.39	1,836.04	-1,667.46	2.00	-2.00	0.00
6,100.00	22.02	60.77	5,612.81	1,046.48	1,870.17	-1,698.45	2.00	-2.00	0.00
6,200.00	20.02	60.77	5,706.15	1,064.00	1,901.47	-1,726.88	2.00	-2.00	0.00
6,300.00	18.02	60.77	5,800.69	1,079.92	1,929.91	-1,752.71	2.00	-2.00	0.00
6,400.00	16.02	60.77	5,896.30	1,094.21	1,955.46	-1,775.91	2.00	-2.00	0.00
6,500.00	14.02	60.77	5,992.88	1,106.87	1,978.08	-1,796.45	2.00	-2.00	0.00
6,600.00	12.02	60.77	6,090.30	1,117.87	1,997.74	-1,814.31	2.00	-2.00	0.00
6,700.00	10.02	60.77	6,188.45	1,127.20	2,014.42	-1,829.46	2.00	-2.00	0.00
6,800.00	8.02	60.77	6,287.21	1,134.86	2,028.11	-1,841.89	2.00	-2.00	0.00
6,900.00	6.02	60.77	6,386.46	1,140.83	2,038.77	-1,851.58	2.00	-2.00	0.00
7,000.00	4.02	60.77	6,486.07	1,145.10	2,046.41	-1,858.51	2.00	-2.00	0.00
7,100.00	2.02	60.77	6,585.92	1,147.68	2,051.01	-1,862.69	2.00	-2.00	0.00
7,201.10	0.00	0.00	6,687.00	1,148.55	2,052.57	-1,864.11	2.00	-2.00	0.00
Start 30.00 hold at 7201.10 MD									
7,231.10	0.00	0.00	6,717.00	1,148.55	2,052.57	-1,864.11	0.00	0.00	0.00
Start DLS 10.00 TFO 270.26									
7,250.00	1.89	270.26	6,735.90	1,148.55	2,052.26	-1,863.80	10.00	10.00	0.00
7,300.00	6.89	270.26	6,785.74	1,148.57	2,048.43	-1,860.01	10.00	10.00	0.00
7,350.00	11.89	270.26	6,835.05	1,148.61	2,040.28	-1,851.94	10.00	10.00	0.00
7,400.00	16.89	270.26	6,883.47	1,148.66	2,027.86	-1,839.64	10.00	10.00	0.00
7,450.00	21.89	270.26	6,930.62	1,148.74	2,011.26	-1,823.21	10.00	10.00	0.00
7,500.00	26.89	270.26	6,976.14	1,148.83	1,990.62	-1,802.77	10.00	10.00	0.00
7,550.00	31.89	270.26	7,019.69	1,148.94	1,966.10	-1,778.49	10.00	10.00	0.00
7,598.82	36.77	270.26	7,060.00	1,149.07	1,938.57	-1,751.24	10.00	10.00	0.00
SHARON SPRINGS									
7,600.00	36.89	270.26	7,060.94	1,149.07	1,937.87	-1,750.54	10.00	10.00	0.00
7,632.02	40.09	270.26	7,086.00	1,149.16	1,917.94	-1,730.81	10.00	10.00	0.00
NIOBRARA									
7,650.00	41.89	270.26	7,099.57	1,149.21	1,906.15	-1,719.14	10.00	10.00	0.00
7,700.00	46.89	270.26	7,135.29	1,149.37	1,871.18	-1,684.52	10.00	10.00	0.00
7,750.00	51.89	270.26	7,167.83	1,149.55	1,833.24	-1,646.95	10.00	10.00	0.00
7,800.00	56.89	270.26	7,196.94	1,149.73	1,792.61	-1,606.72	10.00	10.00	0.00
7,850.00	61.89	270.26	7,222.39	1,149.93	1,749.59	-1,564.13	10.00	10.00	0.00
7,900.00	66.89	270.26	7,244.00	1,150.13	1,704.52	-1,519.51	10.00	10.00	0.00
7,950.00	71.88	270.26	7,261.60	1,150.34	1,657.73	-1,473.19	10.00	10.00	0.00
8,000.00	76.88	270.26	7,275.05	1,150.56	1,609.60	-1,425.53	10.00	10.00	0.00
8,023.96	79.28	270.26	7,280.00	1,150.67	1,586.16	-1,402.33	10.00	10.00	0.00

Planning Report

Database:	EDT_32Bit_ODBC	Local Co-ordinate Reference:	Well DUCK CLUB 12W-20-4N
Company:	EXTRACTION OIL & GAS	TVD Reference:	KB 25' @ 5061.00usft
Project:	Adams County	MD Reference:	KB 25' @ 5061.00usft
Site:	Sec 12-T1S-R66W	North Reference:	True
Well:	DUCK CLUB 12W-20-4N	Survey Calculation Method:	Minimum Curvature
Wellbore:	ORIGINAL WELLBORE		
Design:	PROPOSAL 1		

Planned Survey									
Measured Depth (usft)	Inclination (°)	Azimuth (°)	Vertical Depth (usft)	+N/-S (usft)	+E/-W (usft)	Vertical Section (usft)	Dogleg Rate (°/100ft)	Build Rate (°/100ft)	Turn Rate (°/100ft)
NIO B									
8,050.00	81.88	270.26	7,284.26	1,150.78	1,560.47	-1,376.89	10.00	10.00	0.00
8,100.00	86.88	270.26	7,289.15	1,151.01	1,510.72	-1,327.64	10.00	10.00	0.00
8,131.15	90.00	270.26	7,290.00	1,151.15	1,479.59	-1,296.82	10.00	10.00	0.00
Start 9625.87 hold at 8131.15 MD									
8,200.00	90.00	270.26	7,290.00	1,151.46	1,410.74	-1,228.65	0.00	0.00	0.00
8,300.00	90.00	270.26	7,290.01	1,151.92	1,310.74	-1,129.65	0.00	0.00	0.00
8,400.00	90.00	270.26	7,290.01	1,152.37	1,210.74	-1,030.64	0.00	0.00	0.00
8,500.00	90.00	270.26	7,290.01	1,152.83	1,110.74	-931.63	0.00	0.00	0.00
8,600.00	90.00	270.26	7,290.01	1,153.28	1,010.74	-832.63	0.00	0.00	0.00
8,700.00	90.00	270.26	7,290.02	1,153.73	910.75	-733.62	0.00	0.00	0.00
8,800.00	90.00	270.26	7,290.02	1,154.19	810.75	-634.62	0.00	0.00	0.00
8,900.00	90.00	270.26	7,290.02	1,154.64	710.75	-535.61	0.00	0.00	0.00
9,000.00	90.00	270.26	7,290.03	1,155.10	610.75	-436.61	0.00	0.00	0.00
9,100.00	90.00	270.26	7,290.03	1,155.55	510.75	-337.60	0.00	0.00	0.00
9,200.00	90.00	270.26	7,290.03	1,156.00	410.75	-238.59	0.00	0.00	0.00
9,300.00	90.00	270.26	7,290.04	1,156.46	310.75	-139.59	0.00	0.00	0.00
9,400.00	90.00	270.26	7,290.04	1,156.91	210.75	-40.58	0.00	0.00	0.00
9,500.00	90.00	270.26	7,290.04	1,157.37	110.75	58.42	0.00	0.00	0.00
9,600.00	90.00	270.26	7,290.04	1,157.82	10.76	157.43	0.00	0.00	0.00
9,700.00	90.00	270.26	7,290.05	1,158.28	-89.24	256.43	0.00	0.00	0.00
9,800.00	90.00	270.26	7,290.05	1,158.73	-189.24	355.44	0.00	0.00	0.00
9,900.00	90.00	270.26	7,290.05	1,159.18	-289.24	454.45	0.00	0.00	0.00
10,000.00	90.00	270.26	7,290.06	1,159.64	-389.24	553.45	0.00	0.00	0.00
10,100.00	90.00	270.26	7,290.06	1,160.09	-489.24	652.46	0.00	0.00	0.00
10,200.00	90.00	270.26	7,290.06	1,160.55	-589.24	751.46	0.00	0.00	0.00
10,300.00	90.00	270.26	7,290.07	1,161.00	-689.24	850.47	0.00	0.00	0.00
10,400.00	90.00	270.26	7,290.07	1,161.45	-789.24	949.47	0.00	0.00	0.00
10,500.00	90.00	270.26	7,290.07	1,161.91	-889.24	1,048.48	0.00	0.00	0.00
10,600.00	90.00	270.26	7,290.07	1,162.36	-989.23	1,147.49	0.00	0.00	0.00
10,700.00	90.00	270.26	7,290.08	1,162.82	-1,089.23	1,246.49	0.00	0.00	0.00
10,800.00	90.00	270.26	7,290.08	1,163.27	-1,189.23	1,345.50	0.00	0.00	0.00
10,900.00	90.00	270.26	7,290.08	1,163.72	-1,289.23	1,444.50	0.00	0.00	0.00
11,000.00	90.00	270.26	7,290.09	1,164.18	-1,389.23	1,543.51	0.00	0.00	0.00
11,100.00	90.00	270.26	7,290.09	1,164.63	-1,489.23	1,642.51	0.00	0.00	0.00
11,200.00	90.00	270.26	7,290.09	1,165.09	-1,589.23	1,741.52	0.00	0.00	0.00
11,300.00	90.00	270.26	7,290.10	1,165.54	-1,689.23	1,840.53	0.00	0.00	0.00
11,400.00	90.00	270.26	7,290.10	1,165.99	-1,789.23	1,939.53	0.00	0.00	0.00
11,500.00	90.00	270.26	7,290.10	1,166.45	-1,889.23	2,038.54	0.00	0.00	0.00
11,600.00	90.00	270.26	7,290.10	1,166.90	-1,989.22	2,137.54	0.00	0.00	0.00
11,700.00	90.00	270.26	7,290.11	1,167.36	-2,089.22	2,236.55	0.00	0.00	0.00
11,800.00	90.00	270.26	7,290.11	1,167.81	-2,189.22	2,335.55	0.00	0.00	0.00
11,900.00	90.00	270.26	7,290.11	1,168.26	-2,289.22	2,434.56	0.00	0.00	0.00
12,000.00	90.00	270.26	7,290.12	1,168.72	-2,389.22	2,533.57	0.00	0.00	0.00
12,100.00	90.00	270.26	7,290.12	1,169.17	-2,489.22	2,632.57	0.00	0.00	0.00
12,200.00	90.00	270.26	7,290.12	1,169.63	-2,589.22	2,731.58	0.00	0.00	0.00
12,300.00	90.00	270.26	7,290.13	1,170.08	-2,689.22	2,830.58	0.00	0.00	0.00
12,400.00	90.00	270.26	7,290.13	1,170.53	-2,789.22	2,929.59	0.00	0.00	0.00
12,500.00	90.00	270.26	7,290.13	1,170.99	-2,889.22	3,028.59	0.00	0.00	0.00
12,600.00	90.00	270.26	7,290.13	1,171.44	-2,989.21	3,127.60	0.00	0.00	0.00
12,700.00	90.00	270.26	7,290.14	1,171.90	-3,089.21	3,226.61	0.00	0.00	0.00
12,800.00	90.00	270.26	7,290.14	1,172.35	-3,189.21	3,325.61	0.00	0.00	0.00
12,900.00	90.00	270.26	7,290.14	1,172.80	-3,289.21	3,424.62	0.00	0.00	0.00
13,000.00	90.00	270.26	7,290.15	1,173.26	-3,389.21	3,523.62	0.00	0.00	0.00

Planning Report

Database:	EDT_32Bit_ODBC	Local Co-ordinate Reference:	Well DUCK CLUB 12W-20-4N
Company:	EXTRACTION OIL & GAS	TVD Reference:	KB 25' @ 5061.00usft
Project:	Adams County	MD Reference:	KB 25' @ 5061.00usft
Site:	Sec 12-T1S-R66W	North Reference:	True
Well:	DUCK CLUB 12W-20-4N	Survey Calculation Method:	Minimum Curvature
Wellbore:	ORIGINAL WELLBORE		
Design:	PROPOSAL 1		

Planned Survey									
Measured Depth (usft)	Inclination (°)	Azimuth (°)	Vertical Depth (usft)	+N/-S (usft)	+E/-W (usft)	Vertical Section (usft)	Dogleg Rate (°/100ft)	Build Rate (°/100ft)	Turn Rate (°/100ft)
13,100.00	90.00	270.26	7,290.15	1,173.71	-3,489.21	3,622.63	0.00	0.00	0.00
13,200.00	90.00	270.26	7,290.15	1,174.17	-3,589.21	3,721.63	0.00	0.00	0.00
13,300.00	90.00	270.26	7,290.16	1,174.62	-3,689.21	3,820.64	0.00	0.00	0.00
13,400.00	90.00	270.26	7,290.16	1,175.07	-3,789.21	3,919.65	0.00	0.00	0.00
13,500.00	90.00	270.26	7,290.16	1,175.53	-3,889.20	4,018.65	0.00	0.00	0.00
13,600.00	90.00	270.26	7,290.16	1,175.98	-3,989.20	4,117.66	0.00	0.00	0.00
13,700.00	90.00	270.26	7,290.17	1,176.44	-4,089.20	4,216.66	0.00	0.00	0.00
13,800.00	90.00	270.26	7,290.17	1,176.89	-4,189.20	4,315.67	0.00	0.00	0.00
13,900.00	90.00	270.26	7,290.17	1,177.35	-4,289.20	4,414.67	0.00	0.00	0.00
14,000.00	90.00	270.26	7,290.18	1,177.80	-4,389.20	4,513.68	0.00	0.00	0.00
14,100.00	90.00	270.26	7,290.18	1,178.25	-4,489.20	4,612.69	0.00	0.00	0.00
14,200.00	90.00	270.26	7,290.18	1,178.71	-4,589.20	4,711.69	0.00	0.00	0.00
14,300.00	90.00	270.26	7,290.19	1,179.16	-4,689.20	4,810.70	0.00	0.00	0.00
14,400.00	90.00	270.26	7,290.19	1,179.62	-4,789.20	4,909.70	0.00	0.00	0.00
14,500.00	90.00	270.26	7,290.19	1,180.07	-4,889.19	5,008.71	0.00	0.00	0.00
14,600.00	90.00	270.26	7,290.19	1,180.52	-4,989.19	5,107.71	0.00	0.00	0.00
14,700.00	90.00	270.26	7,290.20	1,180.98	-5,089.19	5,206.72	0.00	0.00	0.00
14,800.00	90.00	270.26	7,290.20	1,181.43	-5,189.19	5,305.73	0.00	0.00	0.00
14,900.00	90.00	270.26	7,290.20	1,181.89	-5,289.19	5,404.73	0.00	0.00	0.00
15,000.00	90.00	270.26	7,290.21	1,182.34	-5,389.19	5,503.74	0.00	0.00	0.00
15,100.00	90.00	270.26	7,290.21	1,182.79	-5,489.19	5,602.74	0.00	0.00	0.00
15,200.00	90.00	270.26	7,290.21	1,183.25	-5,589.19	5,701.75	0.00	0.00	0.00
15,300.00	90.00	270.26	7,290.22	1,183.70	-5,689.19	5,800.75	0.00	0.00	0.00
15,400.00	90.00	270.26	7,290.22	1,184.16	-5,789.19	5,899.76	0.00	0.00	0.00
15,500.00	90.00	270.26	7,290.22	1,184.61	-5,889.18	5,998.77	0.00	0.00	0.00
15,600.00	90.00	270.26	7,290.22	1,185.06	-5,989.18	6,097.77	0.00	0.00	0.00
15,700.00	90.00	270.26	7,290.23	1,185.52	-6,089.18	6,196.78	0.00	0.00	0.00
15,800.00	90.00	270.26	7,290.23	1,185.97	-6,189.18	6,295.78	0.00	0.00	0.00
15,900.00	90.00	270.26	7,290.23	1,186.43	-6,289.18	6,394.79	0.00	0.00	0.00
16,000.00	90.00	270.26	7,290.24	1,186.88	-6,389.18	6,493.79	0.00	0.00	0.00
16,100.00	90.00	270.26	7,290.24	1,187.33	-6,489.18	6,592.80	0.00	0.00	0.00
16,200.00	90.00	270.26	7,290.24	1,187.79	-6,589.18	6,691.81	0.00	0.00	0.00
16,300.00	90.00	270.26	7,290.25	1,188.24	-6,689.18	6,790.81	0.00	0.00	0.00
16,400.00	90.00	270.26	7,290.25	1,188.70	-6,789.17	6,889.82	0.00	0.00	0.00
16,500.00	90.00	270.26	7,290.25	1,189.15	-6,889.17	6,988.82	0.00	0.00	0.00
16,600.00	90.00	270.26	7,290.25	1,189.60	-6,989.17	7,087.83	0.00	0.00	0.00
16,700.00	90.00	270.26	7,290.26	1,190.06	-7,089.17	7,186.83	0.00	0.00	0.00
16,800.00	90.00	270.26	7,290.26	1,190.51	-7,189.17	7,285.84	0.00	0.00	0.00
16,900.00	90.00	270.26	7,290.26	1,190.97	-7,289.17	7,384.85	0.00	0.00	0.00
17,000.00	90.00	270.26	7,290.27	1,191.42	-7,389.17	7,483.85	0.00	0.00	0.00
17,100.00	90.00	270.26	7,290.27	1,191.87	-7,489.17	7,582.86	0.00	0.00	0.00
17,200.00	90.00	270.26	7,290.27	1,192.33	-7,589.17	7,681.86	0.00	0.00	0.00
17,300.00	90.00	270.26	7,290.28	1,192.78	-7,689.17	7,780.87	0.00	0.00	0.00
17,400.00	90.00	270.26	7,290.28	1,193.24	-7,789.16	7,879.87	0.00	0.00	0.00
17,500.00	90.00	270.26	7,290.28	1,193.69	-7,889.16	7,978.88	0.00	0.00	0.00
17,600.00	90.00	270.26	7,290.28	1,194.15	-7,989.16	8,077.89	0.00	0.00	0.00
17,700.00	90.00	270.26	7,290.29	1,194.60	-8,089.16	8,176.89	0.00	0.00	0.00
17,757.01	90.00	270.26	7,290.00	1,195.16	-8,146.17	8,233.38	0.00	0.00	0.00
TD at 17757.01									

Planning Report

Database:	EDT_32Bit_ODBC	Local Co-ordinate Reference:	Well DUCK CLUB 12W-20-4N
Company:	EXTRACTION OIL & GAS	TVD Reference:	KB 25' @ 5061.00usft
Project:	Adams County	MD Reference:	KB 25' @ 5061.00usft
Site:	Sec 12-T1S-R66W	North Reference:	True
Well:	DUCK CLUB 12W-20-4N	Survey Calculation Method:	Minimum Curvature
Wellbore:	ORIGINAL WELLBORE		
Design:	PROPOSAL 1		

Design Targets									
Target Name - hit/miss target - Shape	Dip Angle (°)	Dip Dir. (°)	TVD (usft)	+N/-S (usft)	+E/-W (usft)	Northing (usft)	Easting (usft)	Latitude	Longitude
DC 4N - PBHL - plan hits target center - Point	0.00	0.00	7,290.00	1,195.16	-8,146.17	1,237,336.27	3,207,361.64	39° 58' 56.990 N	104° 45' 36.036 W
DC 4N - LP - plan hits target center - Point	0.00	0.00	7,290.00	1,151.15	1,479.59	1,237,375.74	3,216,987.42	39° 58' 56.568 N	104° 43' 32.376 W

Formations						
Measured Depth (usft)	Vertical Depth (usft)	Name	Lithology	Dip (°)	Dip Direction (°)	
4,182.38	3,900.00	PARKMAN				
5,142.24	4,755.00	SUSSEX				
7,598.82	7,060.00	SHARON SPRINGS				
7,632.02	7,086.00	NIOBRARA				
8,023.96	7,280.00	NIO B				

Plan Annotations					
Measured Depth (usft)	Vertical Depth (usft)	Local Coordinates			
		+N/-S (usft)	+E/-W (usft)	Comment	
700.00	700.00	0.00	0.00	Start Build 2.00	
2,051.62	2,002.03	152.83	273.13	Start 3797.86 hold at 2051.62 MD	
5,849.48	5,384.97	995.72	1,779.44	Start Drop -2.00	
7,201.10	6,687.00	1,148.55	2,052.57	Start 30.00 hold at 7201.10 MD	
7,231.10	6,717.00	1,148.55	2,052.57	Start DLS 10.00 TFO 270.26	
8,131.15	7,290.00	1,151.15	1,479.59	Start 9625.87 hold at 8131.15 MD	
17,757.01	7,290.00	1,195.16	-8,146.17	TD at 17757.01	