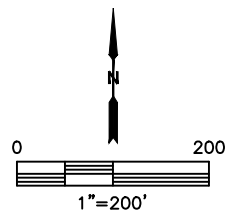
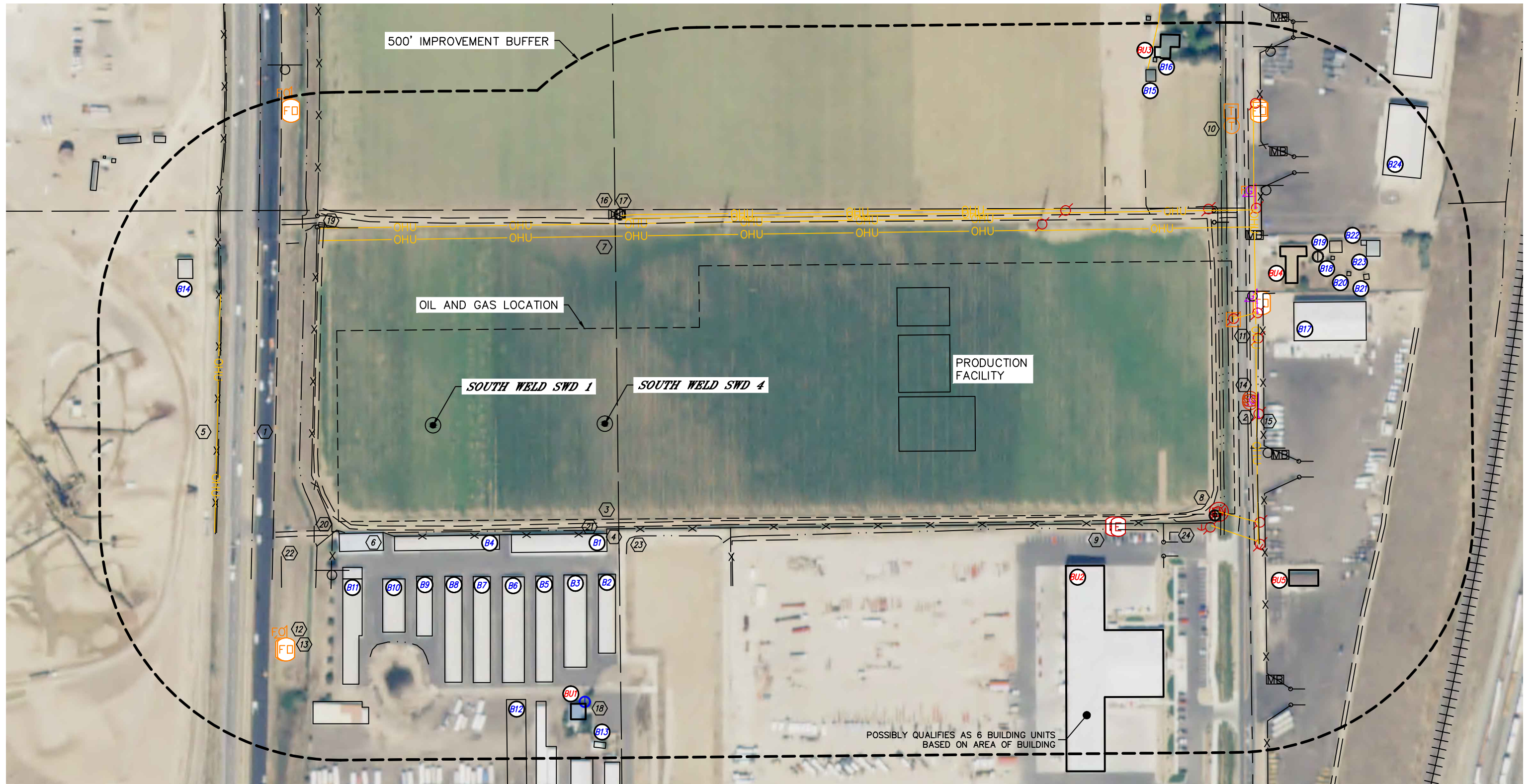


LOCATION DRAWING

SOUTH WELD SWD FACILITY





Lat40°, Inc. 6250 W. 10th Street, Unit 2, Greeley, CO 970-515-5294

LOCATION DRAWING

SOUTH WELD SWD FACILITY

SECTION: 30
TOWNSHIP: 1N
RANGE: 66W
6TH. P.M.
WELD COUNTY, CO

IMPROVEMENTS:

(MEASURED FROM THE PROPOSED SOUTH WELD SWD 4 WELL LOCATION)

- ① BUILDING UNIT BU1 588' SW, BU2 1011' SE, BU3 1385' NE, BU4 1457' NE, BU5 1466' SE
- ② BUILDING B1 230' S, B2 315' S, B3 319' SW, B4 321' SW, B5 337' SW, B6 363' SW, B7 400' SW, B8 438' SW, B9 483' SW, B10 530' SW, B11 604' SW, B12 601' SW, B13 666' S, B14 915' NW, B15 1342' NE, B16 1377' NE, B17 1455' NE, B18 1560' NE, B19 1561' NE, B20 1586' NE, B21 1602' NE, B22 1628' NE, B23 1634' NE, B24 1711' NE
- ③ US HIGHWAY 85 690' W
- ④ COUNTY ROAD 27 1328' E
- ⑤ ROAD/EDGE OF GRAVEL 208' S, 362' & 1633' SE, 420' N, 600' W, 622' SW, 736' NW, 1136' NE, 1274' E
- ⑥ FENCE 221' S, 222' & 1189' SE, 612' W, 1381' E, 1432' NE
- ⑦ FENCE – GRAVEL PIT (LIMITED ACCESS) 811' W
- ⑧ STORAGE CONTAINERS 518', 591', 595' & 773' SW
- ⑨ OVERHEAD UTILITY LINE 393' N, 430', 1336' & 1359' NE, 812' W, 1300' SE, 1365' E
- ⑩ ELECTRIC MANHOLE 1300' SE
- ⑪ ELECTRIC VAULT 1086' & 1097' SE
- ⑫ TELEPHONE MANHOLE 1454' NE
- ⑬ TELEPHONE PEDESTAL 1335', 1467' & 1523' NE
- ⑭ FIBER OPTIC MARKER 817' SW, 928' NW, 1438' NE
- ⑮ FIBER OPTIC VAULT 819' & 821' SW, 929' NW, 1399' & 1520' NE
- ⑯ SANITARY SEWER MANHOLE 1353' E
- ⑰ GAS MARKER 1370' E, 1387' & 1436' NE
- ⑱ IRRIGATION VALVE 440' NE
- ⑲ IRRIGATION WELL 440' & 1535' NE, 1293' SE
- ⑳ WATER WELL 584' SW
- ㉑ BRIDGE 718' NW
- ㉒ PIPE 605' & 646' SW, 755' NW, 1294' & 1367' SE, 1351', 1361' & 1372' NE
- ㉓ DITCH 225' & 591' SW, 352' & 1209' SE, 638' W, 745' NW, 1227' & 1827' NE, 1289', 1296', 1308' & 1368' E
- ㉔ BORROW DITCH 733' SW, 734' & 808' W
- ㉕ POND 244' SE, 608' SW
- ㉖ CURB & GUTTER 1205' SE