

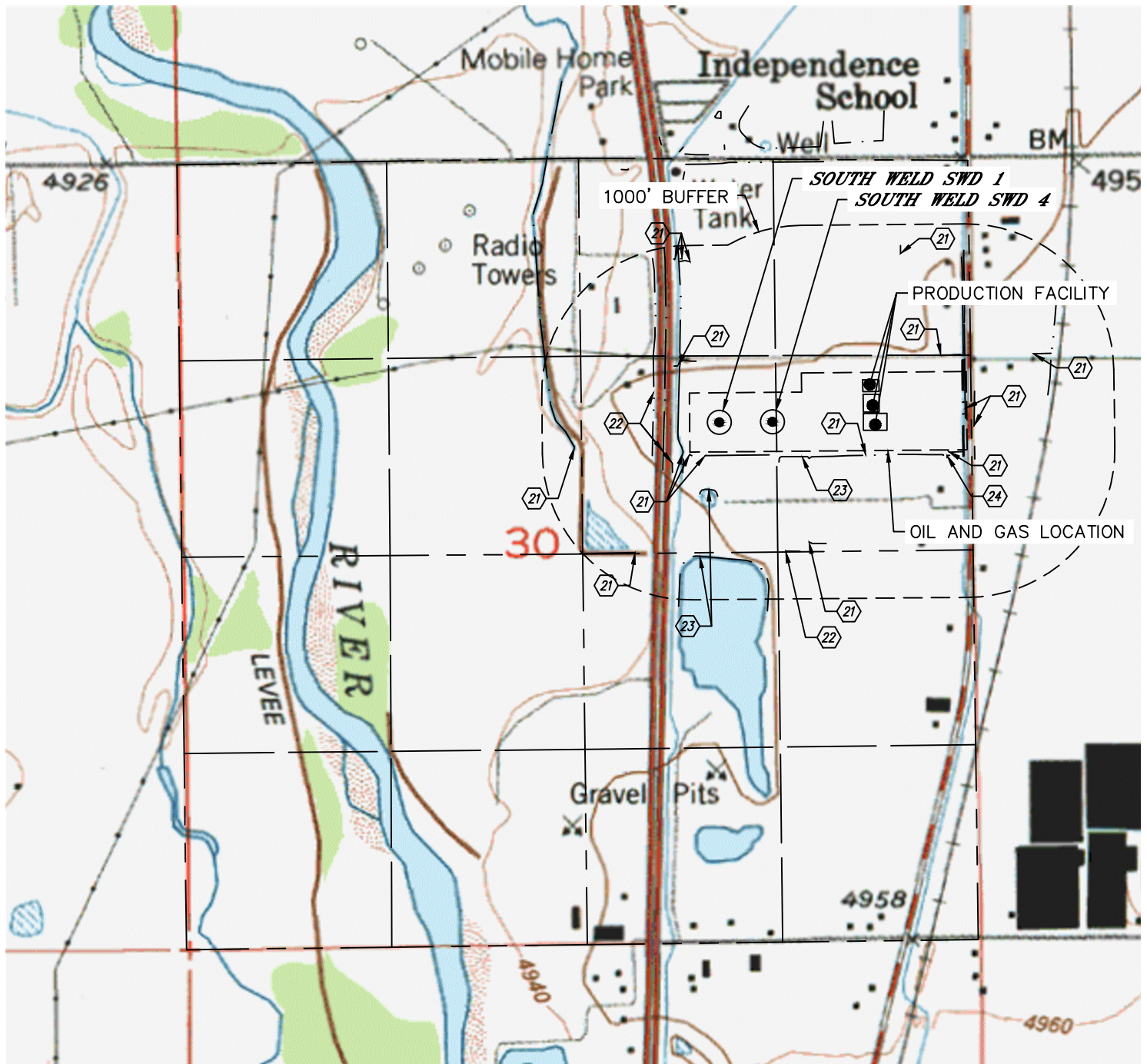


Lat40°, Inc. 6250 W. 10th Street, Unit 2, Greeley, CO 970-515-5294

HYDROLOGY MAP

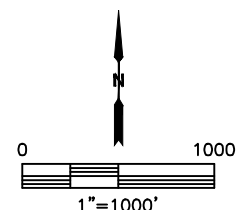
SOUTH WELD SWD FACILITY

SECTION: 30
TOWNSHIP: 1N
RANGE: 66W
6TH. P.M.
WELD COUNTY, CO



DISTANCES MEASURED FROM THE EDGE OF THE OIL AND GAS LOCATION.

- ②① DITCH 2-INSIDE LOCATION, 11', 24', 32' & 617' S, 18' & 775' SW, 46' 48' & $\pm 780'$ W, 110', 802' & 890' N, 200', 911' & 914' NW, 470' NE
- ②② BORROW DITCH 141' SW, $\pm 180'$ & 242' W, 676' S
- ②③ POND 37', 253' & 705' S
- ②④ CURB & GUTTER 37' S



DATE: 3/27/2018
PROJECT#: 2018040