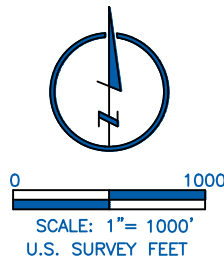


LEGEND

- | | |
|---------------------------|-------------------|
| ⊙ ALIQUOT CORNER | ⊙ PROPOSED WELL |
| ⬠ COMPUTED ALIQUOT CORNER | A.C. ALUMINUM CAP |
| ⊖ BOTTOM HOLE | R.B. RANGE BOX |

NOTES:

- DISTANCES ARE MEASURED PERPENDICULAR TO NEAREST SECTION LINE AND ARE SHOWN ON THE SAME SIDE OF THE SECTION LINE WHERE THE WELL IS LOCATED.
- THIS MAP DOES NOT REPRESENT A MONUMENTED BOUNDARY SURVEY. SIXTEENTH CORNER LOCATIONS ARE COMPUTED, UNLESS OTHERWISE NOTED.
- BOTTOM HOLE LOCATIONS AND HORIZONTAL COMPLETION ZONE PROVIDED BY OTHERS.
- ALL REBAR AND CAPS ARE MEASURED IN INCHES.



LAMP RYNEARSON
& ASSOCIATES

4715 Innovation Drive 970.226.0342 | P
Fort Collins, CO 80525 970.226.0879 | F
www.LRA-inc.com

PROPOSED WELL LOCATION EXHIBIT
JAMASO 4-65 5-6-6
2 OF 3

DRAWN BY
CPP

DATE

COGCC ID

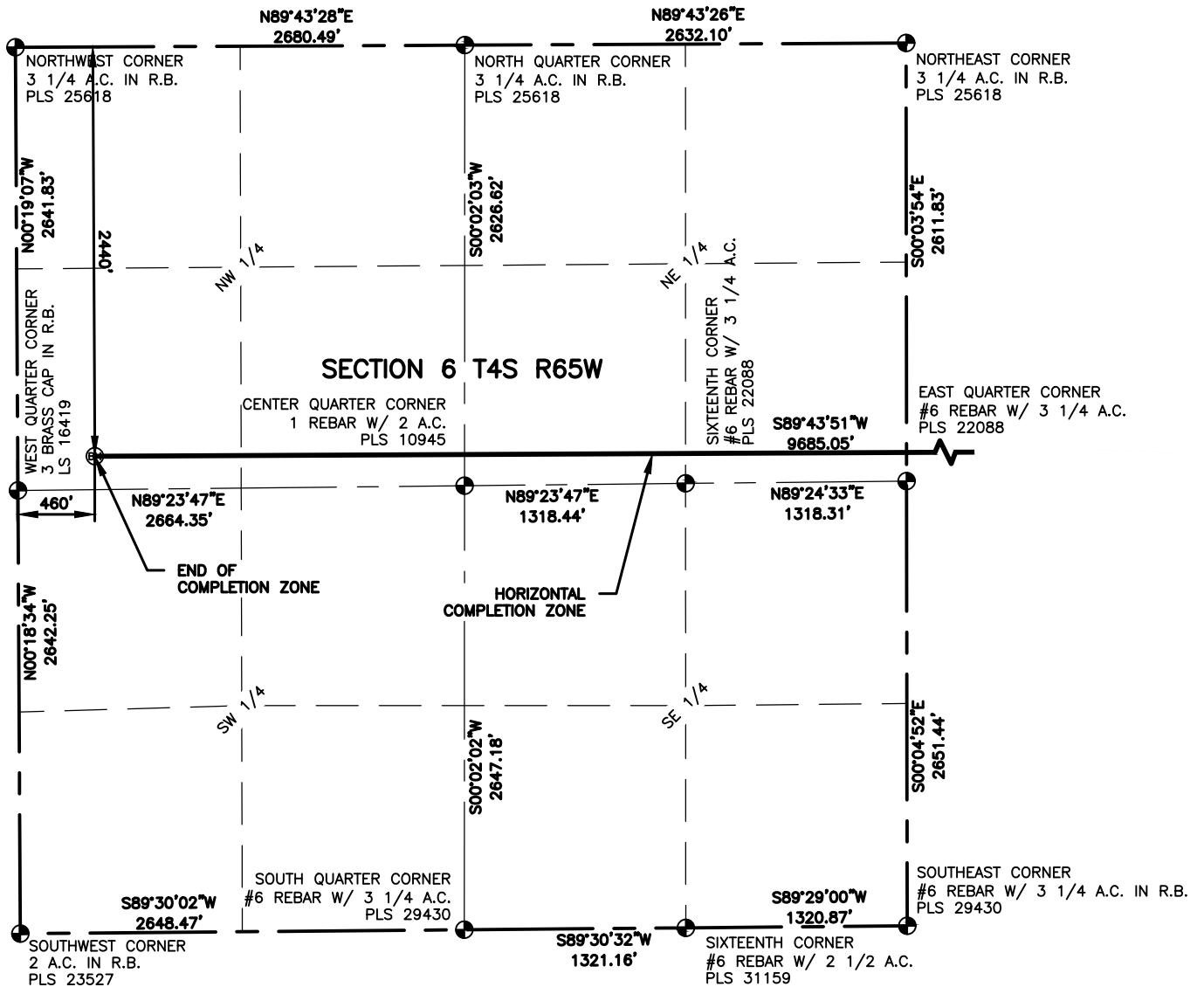
PROJECT - TASK NUMBER
0218003.03

BOOK AND PAGE

SURFACE - LOCATION

PATH\FILENAME L:\Engineering\0218003.03 XOG - Jamaso\SURVEY\DRAWINGS\EXHIBITS\0218003.03 WP-A2.dwg

NW/4 SW/4 SEC 4 T4S R65W,
CITY OF AURORA

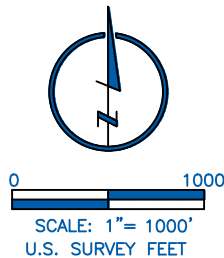


LEGEND

- ⊕ ALIQUOT CORNER
- ⊙ PROPOSED WELL
- ⬠ COMPUTED ALIQUOT CORNER
- A.C. ALUMINUM CAP
- ⊖ BOTTOM HOLE
- R.B. RANGE BOX

NOTES:

- DISTANCES ARE MEASURED PERPENDICULAR TO NEAREST SECTION LINE AND ARE SHOWN ON THE SAME SIDE OF THE SECTION LINE WHERE THE WELL IS LOCATED.
- THIS MAP DOES NOT REPRESENT A MONUMENTED BOUNDARY SURVEY. SIXTEENTH CORNER LOCATIONS ARE COMPUTED, UNLESS OTHERWISE NOTED.
- BOTTOM HOLE LOCATIONS AND HORIZONTAL COMPLETION ZONE PROVIDED BY OTHERS.
- ALL REBAR AND CAPS ARE MEASURED IN INCHES.



LAMP RYNEARSON
& ASSOCIATES

4715 Innovation Drive 970.226.0342 | P
Fort Collins, CO 80525 970.226.0879 | F
www.LRA-inc.com

PROPOSED WELL LOCATION EXHIBIT
JAMASO 4-65 5-6-6
3 OF 3

DRAWN BY	DATE	COGCC ID	PROJECT - TASK NUMBER	BOOK AND PAGE
CPP	03/30		0218003.03	

PATH\FILENAME L:\Engineering\0218003.03 XOG - Jamaso\SURVEY\DRAWINGS\EXHIBITS\0218003.03 WP-A3.dwg

SURFACE - LOCATION
NW/4 SW/4 SEC 4 T4S R65W,
CITY OF AURORA