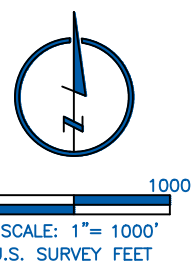
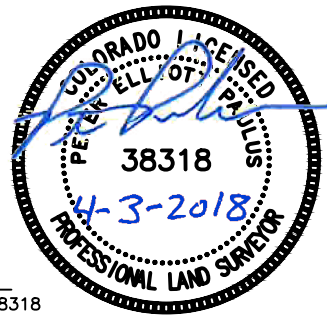


WELL LOCATION DATA:
 LATITUDE: 39.73335°N
 LONGITUDE: -104.67717°W
 ELEVATION: 5584'
 PDOP: 1.543
 OPERATOR: D.WIMMER
 SURFACE USE: AGRICULTURAL

LAND SURVEYOR'S CERTIFICATION

LAMP, RYNEARSON & ASSOCIATES, INC., OF FT. COLLINS, COLORADO HAS, IN ACCORDANCE WITH A REQUEST FROM RYAN BRUNER, AXIS EXPLORATION, DETERMINED THE SURFACE LOCATION OF THE WELL DESIGNATED AS JAMASO 4-65 5-6-5 TO BE 2427' FROM THE NORTH LINE AND 319' FROM THE WEST LINE OF SECTION 4, TOWNSHIP 4 SOUTH, RANGE 65 WEST OF THE 6TH P.M., ARAPAHOE COUNTY, COLORADO.



PETER ELLIOTT PAULUS COLORADO PLS 38318
 DATE OF SURVEY: 01/09/2018 (SECTION CONTROL)
 DATE OF SURVEY: 01/18/2018 (WELL LOCATION)

- LEGEND**
- ◆ COMPUTED ALIQUOT CORNER
 - ⊕ ALIQUOT CORNER
 - ⊙ BOTTOM HOLE
 - ⊙ PROPOSED WELL
 - A.C. ALUMINUM CAP
 - R.B. RANGE BOX

- NOTES:**
1. DISTANCES ARE MEASURED PERPENDICULAR TO NEAREST SECTION LINE AND ARE SHOWN ON THE SAME SIDE OF THE SECTION LINE WHERE THE WELL IS LOCATED.
 2. THIS MAP DOES NOT REPRESENT A MONUMENTED BOUNDARY SURVEY. SIXTEENTH CORNER LOCATIONS ARE COMPUTED, UNLESS OTHERWISE NOTED.
 3. BOTTOM HOLE LOCATIONS AND HORIZONTAL COMPLETION ZONE PROVIDED BY OTHERS.
 4. ALL REBAR AND CAPS ARE MEASURED IN INCHES

BASIS OF BEARING:
 THE WEST LINE OF THE SOUTHWEST QUARTER OF SECTION 4-T4S-R65W BEARS N00°22'38"W FOR 2647.43 FT BETWEEN THE SOUTHWEST CORNER OF SECTION 4 MONUMENTED WITH 2 1/2" A.C. IN R.B. STAMPED "PLS 29430" AND THE WEST QUARTER CORNER OF SECTION 4 MONUMENTED WITH 3 1/4" A.C. IN R.B. STAMPED "LS 34178" BASED ON THE COLORADO CENTRAL 0502 STATE PLANE COORDINATE SYSTEM.

ELEVATIONS ARE BASED ON NAVD 88, AS OBSERVED FROM GPS OBSERVATIONS

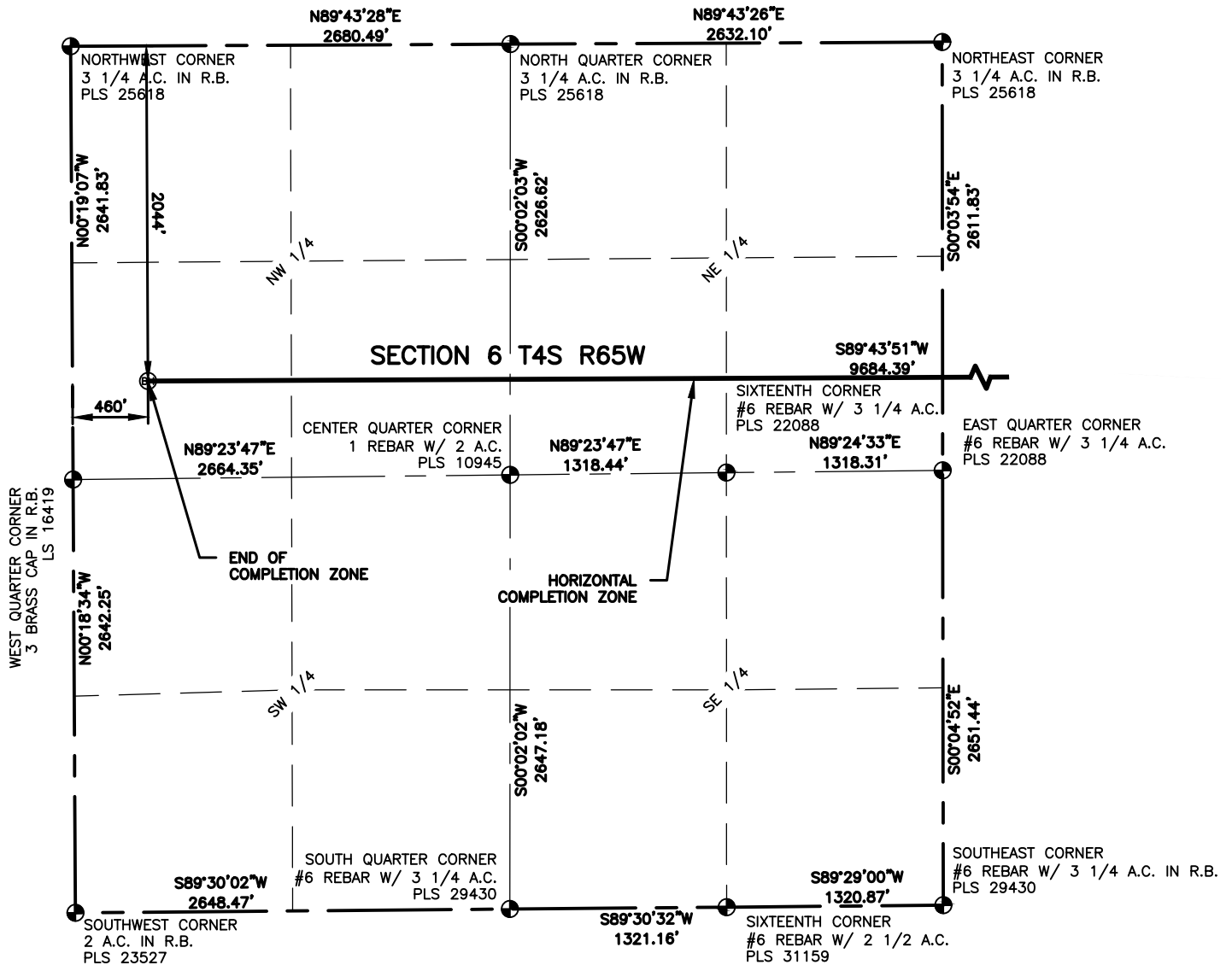


LAMP RYNEARSON & ASSOCIATES

4715 Innovation Drive 970.226.0342 | P
 Fort Collins, CO 80525 970.226.0879 | F
 www.LRA-inc.com

PROPOSED WELL LOCATION EXHIBIT
 JAMASO 4-65 5-6-5
 1 OF 3

DRAWN BY CPP	DATE 03/30	COGCC ID 0218003.03	PROJECT - TASK NUMBER 0218003.03	BOOK AND PAGE
PATH\FILENAME L:\Engineering\0218003.03 X0G - Jamaso\SURVEY\DRAWINGS\EXHIBITS\0218003.03 WP-B1.dwg				SURFACE - LOCATION NW/4 SW/4 SEC 4 T4S R65W, CITY OF AURORA

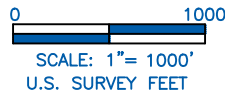


LEGEND

- ⊕ ALIQUOT CORNER ⊙ PROPOSED WELL
- ⬠ COMPUTED ALIQUOT CORNER A.C. ALUMINUM CAP
- ⊖ BOTTOM HOLE R.B. RANGE BOX

NOTES:

- DISTANCES ARE MEASURED PERPENDICULAR TO NEAREST SECTION LINE AND ARE SHOWN ON THE SAME SIDE OF THE SECTION LINE WHERE THE WELL IS LOCATED.
- THIS MAP DOES NOT REPRESENT A MONUMENTED BOUNDARY SURVEY. SIXTEENTH CORNER LOCATIONS ARE COMPUTED, UNLESS OTHERWISE NOTED.
- BOTTOM HOLE LOCATIONS AND HORIZONTAL COMPLETION ZONE PROVIDED BY OTHERS.
- ALL REBAR AND CAPS ARE MEASURED IN INCHES.



LAMP RYNEARSON & ASSOCIATES

4715 Innovation Drive 970.226.0342 | P
 Fort Collins, CO 80525 970.226.0879 | F
 www.LRA-Inc.com

PROPOSED WELL LOCATION EXHIBIT
 JAMASO 4-65 5-6-5
 3 OF 3

DRAWN BY CPP	DATE 03/30	COGCC ID 0218003.03	PROJECT - TASK NUMBER 0218003.03	BOOK AND PAGE	SURFACE - LOCATION NW/4 SW/4 SEC 4 T4S R65W, CITY OF AURORA
------------------------	----------------------	-------------------------------	--	----------------------	--