

LAND SURVEYOR'S CERTIFICATION

LAMP, RYNEARSON & ASSOCIATES, INC., OF FT. COLLINS, COLORADO HAS, IN ACCORDANCE WITH A REQUEST FROM RYAN BRUNER, AXIS EXPLORATION, DETERMINED THE SURFACE LOCATION OF THE WELL DESIGNATED AS JAMASO 4-65 5-6-4 TO BE 2427' FROM THE NORTH LINE AND 337' FROM THE WEST LINE OF SECTION 4, TOWNSHIP 4 SOUTH, RANGE 65 WEST OF THE 6TH P.M., ARAPAHOE COUNTY, COLORADO.



0 1000
SCALE: 1" = 1000'
U.S. SURVEY FEET

PETER ELLIOTT PAULUS COLORADO PLS 38318
DATE OF SURVEY: 01/09/2018 (SECTION CONTROL)
DATE OF SURVEY: 01/18/2018 (WELL LOCATION)

NOTES:

- DISTANCES ARE MEASURED PERPENDICULAR TO NEAREST SECTION LINE AND ARE SHOWN ON THE SAME SIDE OF THE SECTION LINE WHERE THE WELL IS LOCATED.
- THIS MAP DOES NOT REPRESENT A MONUMENTED BOUNDARY SURVEY. SIXTEENTH CORNER LOCATIONS ARE COMPUTED, UNLESS OTHERWISE NOTED.
- BOTTOM HOLE LOCATIONS AND HORIZONTAL COMPLETION ZONE PROVIDED BY OTHERS.
- ALL REBAR AND CAPS ARE MEASURED IN INCHES

BASIS OF BEARING:

THE WEST LINE OF THE SOUTHWEST QUARTER OF SECTION 4-T4S-R65W BEARS N00°22'38"W FOR 2647.43 FT BETWEEN THE SOUTHWEST CORNER OF SECTION 4 MONUMENTED WITH 2 1/2" A.C. IN R.B. STAMPED "PLS 29430" AND THE WEST QUARTER CORNER OF SECTION 4 MONUMENTED WITH 3 1/4" A.C. IN R.B. STAMPED "LS 34178" BASED ON THE COLORADO CENTRAL 0502 STATE PLANE COORDINATE SYSTEM.

ELEVATIONS ARE BASED ON NAVD 88, AS OBSERVED FROM GPS OBSERVATIONS



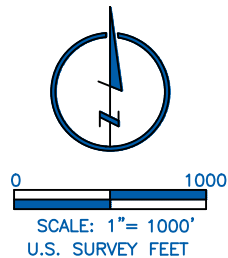
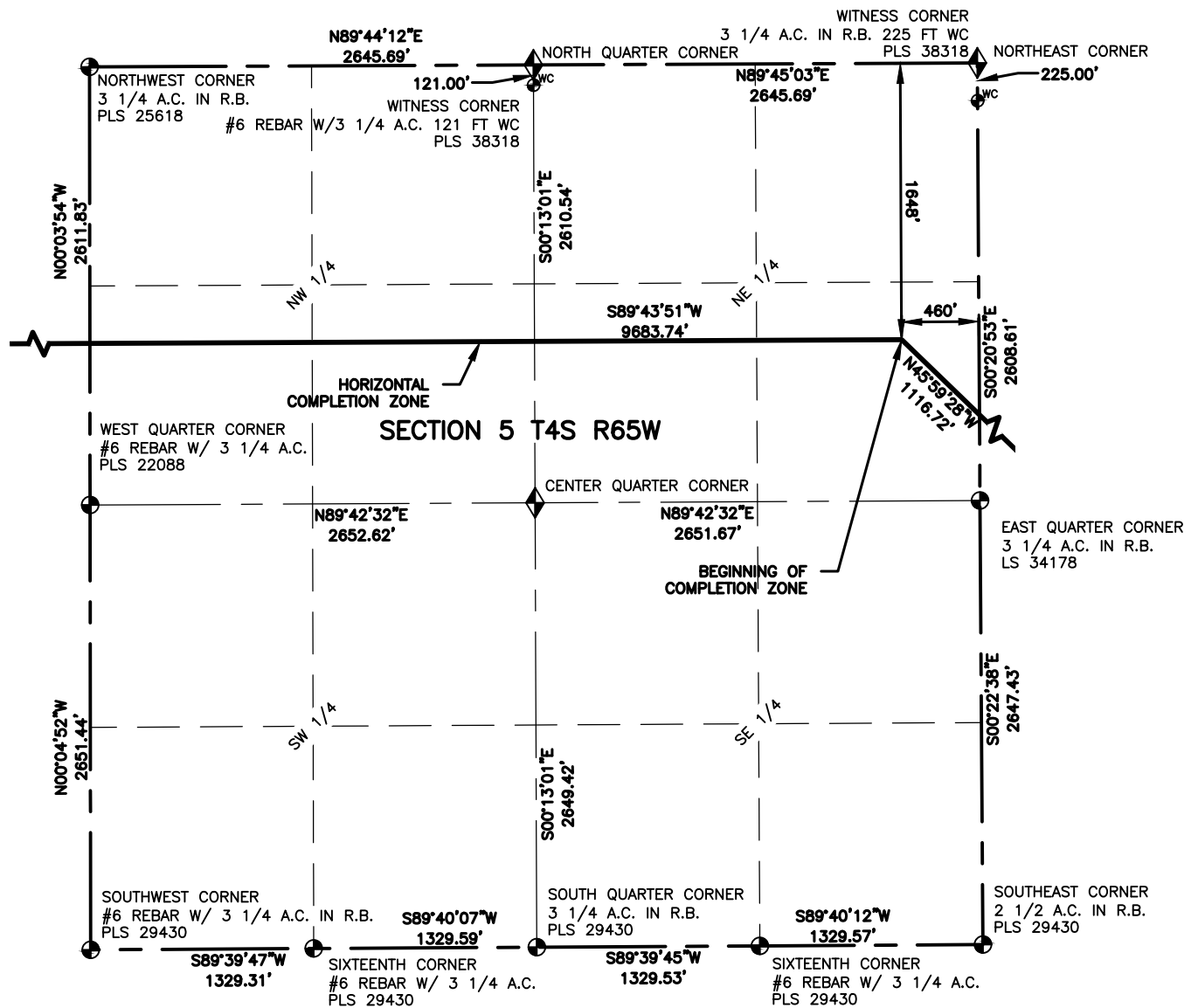
LAMP RYNEARSON
& ASSOCIATES

4715 Innovation Drive 970.226.0342 | P
Fort Collins, CO 80525 970.226.0879 | F
www.LRA-Inc.com

PROPOSED WELL LOCATION EXHIBIT
JAMASO 4-65 5-6-4
1 OF 3

DRAWN BY: CPP
DATE: 03/30
COGCC ID: 0218003.03
PROJECT - TASK NUMBER: 0218003.03
BOOK AND PAGE: 0218003.03 WP-C1.dwg

SURFACE - LOCATION
NW/4 SW/4 SEC 4 T4S R65W,
CITY OF AURORA



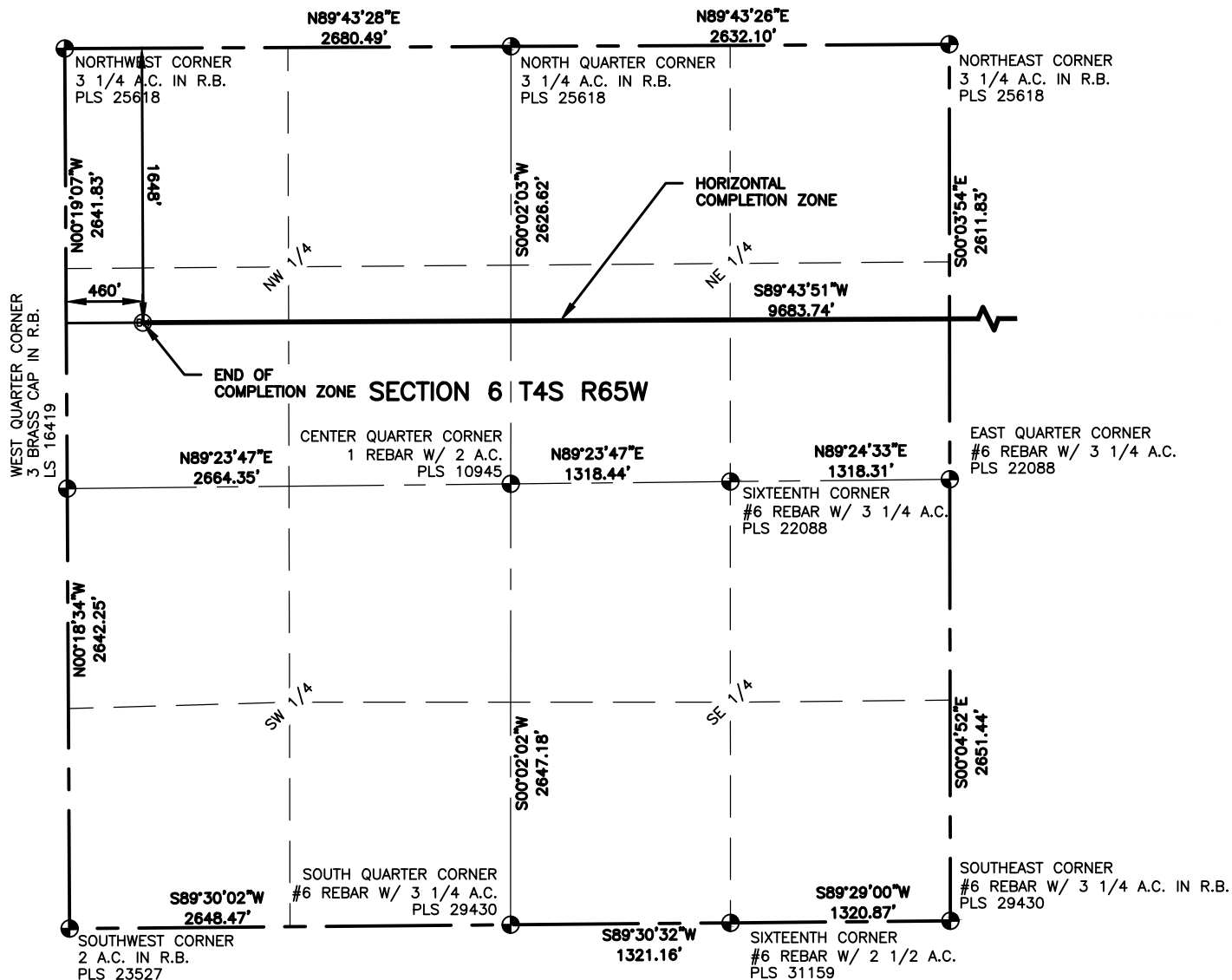
LAMP RYNEARSON
& ASSOCIATES

4715 Innovation Drive 970.226.0342 | P
Fort Collins, CO 80525 970.226.0879 | F
www.LRA-inc.com

PROPOSED WELL LOCATION EXHIBIT
JAMASO 4-65 5-6-4
2 OF 3

DRAWN BY: CPP DATE: COGCC ID: PROJECT - TASK NUMBER: 0218003.03 BOOK AND PAGE: SURFACE - LOCATION
PATH/FILENAME: L:\Engineering\0218003.03 XOG - Jamaso\SURVEY\DRAWINGS\EXHIBITS\0218003.03 WP-C2.dwg

NW/4 SW/4 SEC 4 T4S R65W,
CITY OF AURORA

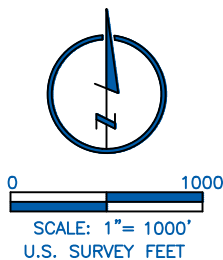


LEGEND

- | | |
|---------------------------|-------------------|
| ⊙ ALIQUOT CORNER | ⊙ PROPOSED WELL |
| ⬠ COMPUTED ALIQUOT CORNER | A.C. ALUMINUM CAP |
| ⊙ BOTTOM HOLE | R.B. RANGE BOX |

NOTES:

- DISTANCES ARE MEASURED PERPENDICULAR TO NEAREST SECTION LINE AND ARE SHOWN ON THE SAME SIDE OF THE SECTION LINE WHERE THE WELL IS LOCATED.
- THIS MAP DOES NOT REPRESENT A MONUMENTED BOUNDARY SURVEY. SIXTEENTH CORNER LOCATIONS ARE COMPUTED, UNLESS OTHERWISE NOTED.
- BOTTOM HOLE LOCATIONS AND HORIZONTAL COMPLETION ZONE PROVIDED BY OTHERS.
- ALL REBAR AND CAPS ARE MEASURED IN INCHES.



LAMP RYNEARSON
& ASSOCIATES

4715 Innovation Drive 970.226.0342 | P
Fort Collins, CO 80525 970.226.0879 | F
www.LRA-inc.com

PROPOSED WELL LOCATION EXHIBIT
JAMASO 4-65 5-6-4
3 OF 3

DRAWN BY
CPP

DATE
03/30

COGCC ID

PROJECT - TASK NUMBER
0218003.03

BOOK AND PAGE

SURFACE - LOCATION

PATH/FILENAME L:\Engineering\0218003.03 XOG - Jamaso\SURVEY\DRAWINGS\EXHIBITS\0218003.03 WP-C3.dwg

NW/4 SW/4 SEC 4 T4S R65W,
CITY OF AURORA