

### LAND SURVEYOR'S CERTIFICATION

LAMP, RYNEARSON & ASSOCIATES, INC., OF FT. COLLINS, COLORADO HAS, IN ACCORDANCE WITH A REQUEST FROM RYAN BRUNER, AXIS EXPLORATION, DETERMINED THE SURFACE LOCATION OF THE WELL DESIGNATED AS JAMASO 4-65 5-6-3 TO BE 2427' FROM THE NORTH LINE AND 355' FROM THE WEST LINE OF SECTION 4, TOWNSHIP 4 SOUTH, RANGE 65 WEST OF THE 6TH P.M., ARAPAHOE COUNTY, COLORADO.



0 1000  
 SCALE: 1"= 1000'  
 U.S. SURVEY FEET

PETER ELLIOTT PAULUS COLORADO PLS 38318  
 DATE OF SURVEY: 01/09/2018 (SECTION CONTROL)  
 DATE OF SURVEY: 01/18/2018 (WELL LOCATION)



**LAMP RYNEARSON**  
 & ASSOCIATES

4715 Innovation Drive 970.226.0342 | P  
 Fort Collins, CO 80525 970.226.0879 | F  
 www.LRA-inc.com

PROPOSED WELL LOCATION EXHIBIT  
 JAMASO 4-65 5-6-3  
 1 OF 3

DRAWN BY  
 CPP  
 PATH/FILENAME

DATE  
 03/30

COGCC ID

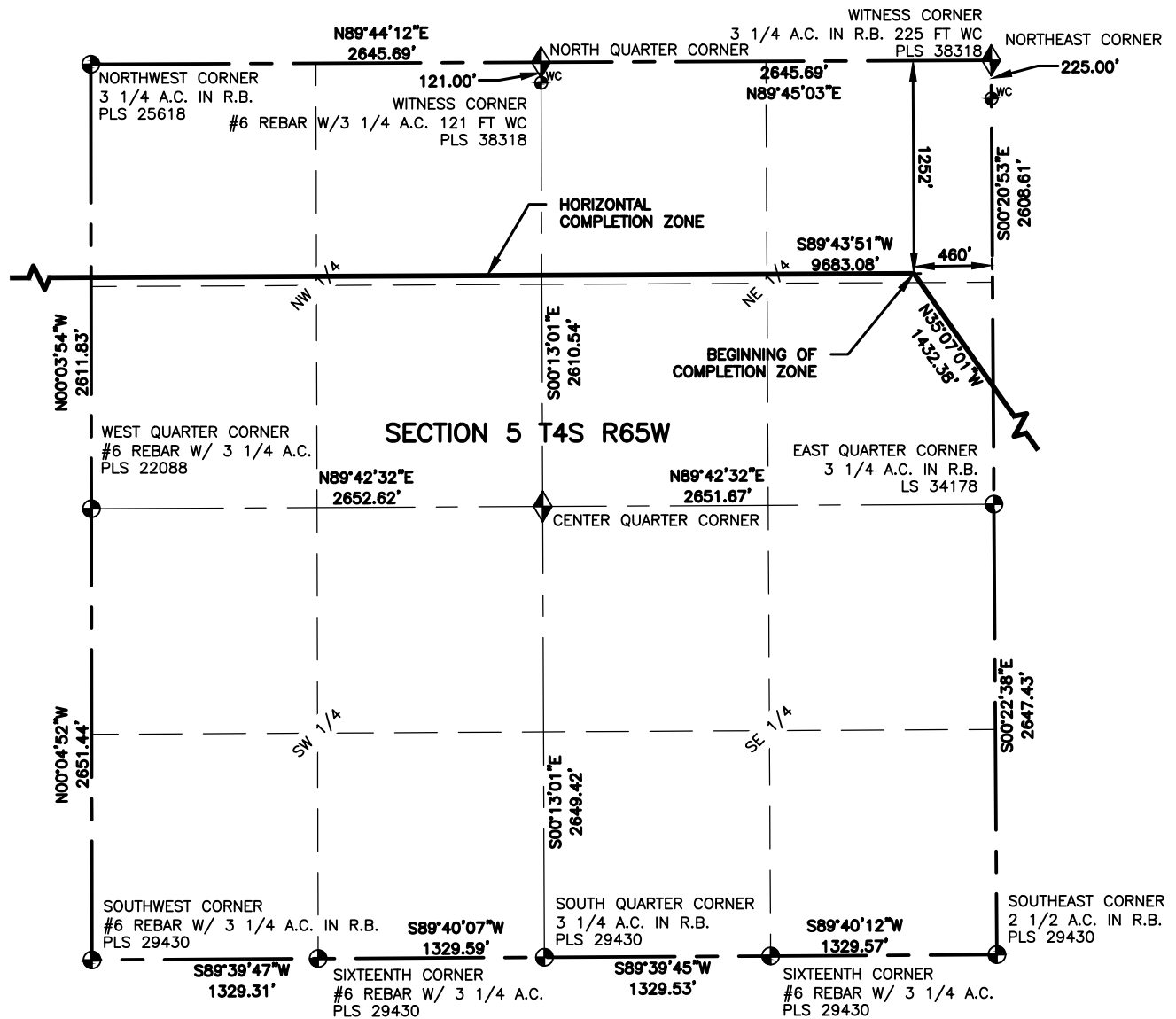
PROJECT - TASK NUMBER  
 0218003.03

BOOK AND PAGE

SURFACE - LOCATION

NW/4 SW/4 SEC 4 T4S R65W,  
 CITY OF AURORA

L:\Engineering\0218003.03 XOG - Jamaso\SURVEY\DRAWINGS\EXHIBITS\0218003.03 WP-D1.dwg



### LEGEND

- |                           |                   |
|---------------------------|-------------------|
| ⊙ ALIQUOT CORNER          | ⊙ PROPOSED WELL   |
| ⬠ COMPUTED ALIQUOT CORNER | A.C. ALUMINUM CAP |
| ⊖ BOTTOM HOLE             | R.B. RANGE BOX    |

### NOTES:

- DISTANCES ARE MEASURED PERPENDICULAR TO NEAREST SECTION LINE AND ARE SHOWN ON THE SAME SIDE OF THE SECTION LINE WHERE THE WELL IS LOCATED.
- THIS MAP DOES NOT REPRESENT A MONUMENTED BOUNDARY SURVEY. SIXTEENTH CORNER LOCATIONS ARE COMPUTED, UNLESS OTHERWISE NOTED.
- BOTTOM HOLE LOCATIONS AND HORIZONTAL COMPLETION ZONE PROVIDED BY OTHERS.
- ALL REBAR AND CAPS ARE MEASURED IN INCHES.



0 1000  
SCALE: 1" = 1000'  
U.S. SURVEY FEET



**LAMP RYNEARSON**  
& ASSOCIATES

4715 Innovation Drive 970.226.0342 | P  
Fort Collins, CO 80525 970.226.0879 | F  
www.LRA-Inc.com

PROPOSED WELL LOCATION EXHIBIT  
JAMASO 4-65 5-6-3  
2 OF 3

DRAWN BY  
CPP

DATE

COGCC ID

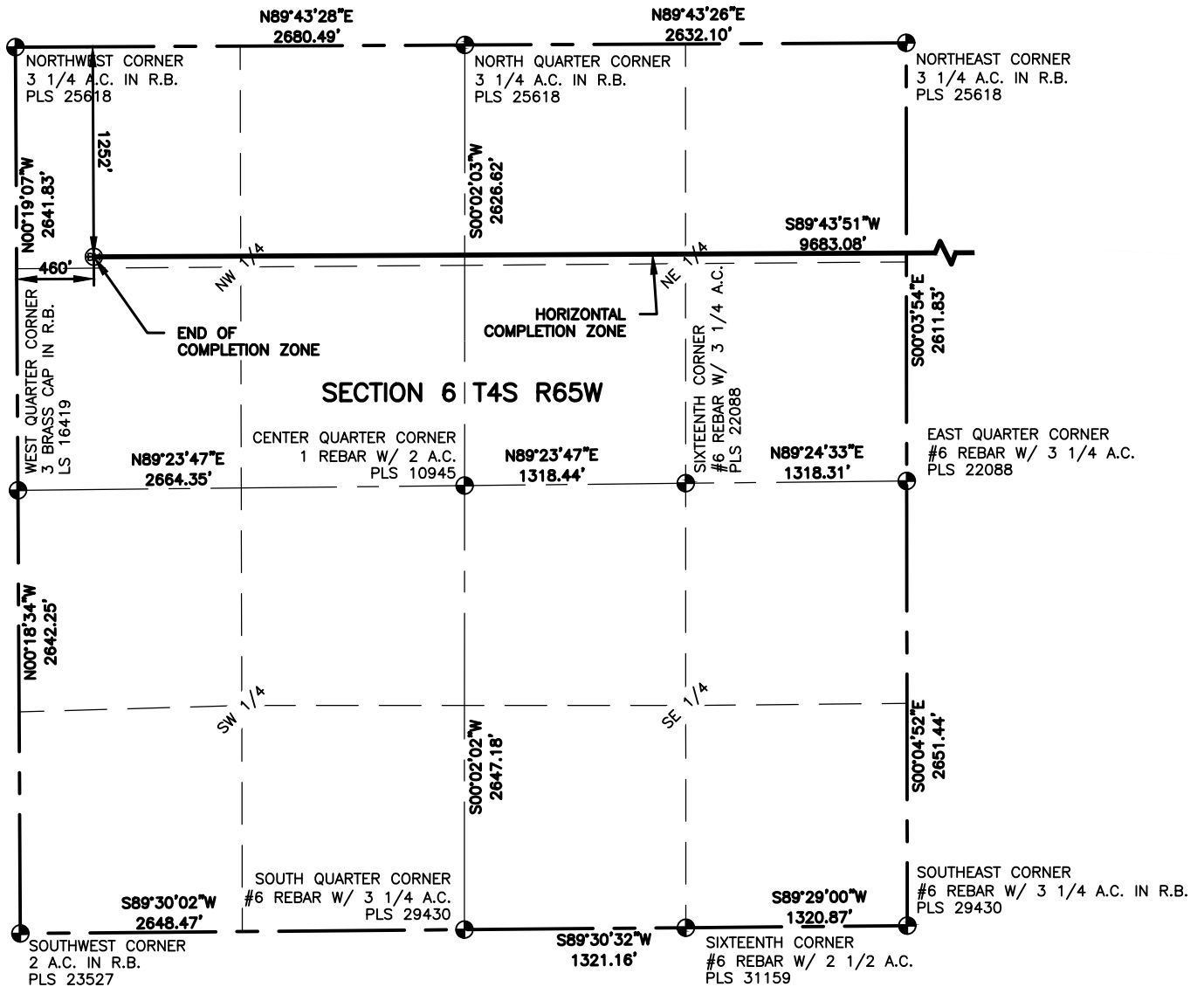
PROJECT - TASK NUMBER  
0218003.03

BOOK AND PAGE

SURFACE - LOCATION

PATH\FILENAME L:\Engineering\0218003.03 XOG - Jamaso\SURVEY\DRAWINGS\EXHIBITS\0218003.03 WP-D2.dwg

NW/4 SW/4 SEC 4 T4S R65W,  
CITY OF AURORA

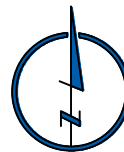


### LEGEND

- ⊕ ALIQUOT CORNER
- ⊙ PROPOSED WELL
- ⬠ COMPUTED ALIQUOT CORNER
- A.C. ALUMINUM CAP
- ⊖ BOTTOM HOLE
- R.B. RANGE BOX

### NOTES:

- DISTANCES ARE MEASURED PERPENDICULAR TO NEAREST SECTION LINE AND ARE SHOWN ON THE SAME SIDE OF THE SECTION LINE WHERE THE WELL IS LOCATED.
- THIS MAP DOES NOT REPRESENT A MONUMENTED BOUNDARY SURVEY. SIXTEENTH CORNER LOCATIONS ARE COMPUTED, UNLESS OTHERWISE NOTED.
- BOTTOM HOLE LOCATIONS AND HORIZONTAL COMPLETION ZONE PROVIDED BY OTHERS.
- ALL REBAR AND CAPS ARE MEASURED IN INCHES.



0 1000  
SCALE: 1"= 1000'  
U.S. SURVEY FEET



**LAMP RYNEARSON**  
& ASSOCIATES

4715 Innovation Drive 970.226.0342 | P  
Fort Collins, CO 80525 970.226.0879 | F  
www.LRA-inc.com

PROPOSED WELL LOCATION EXHIBIT  
JAMASO 4-65 5-6-3  
3 OF 3

DRAWN BY  
CPP

DATE  
03/30

COGCC ID

PROJECT - TASK NUMBER  
0218003.03

BOOK AND PAGE

SURFACE - LOCATION

PATH\FILENAME L:\Engineering\0218003.03 XOG - Jamaso\SURVEY\DRAWINGS\EXHIBITS\0218003.03 WP-D3.dwg

NW/4 SW/4 SEC 4 T4S R65W,  
CITY OF AURORA