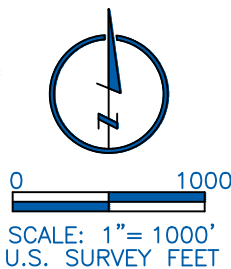


LAND SURVEYOR'S CERTIFICATION

LAMP, RYNEARSON & ASSOCIATES, INC., OF FT. COLLINS, COLORADO HAS, IN ACCORDANCE WITH A REQUEST FROM RYAN BRUNER, AXIS EXPLORATION, DETERMINED THE SURFACE LOCATION OF THE WELL DESIGNATED AS JAMASO 4-65 5-6-1 TO BE 2427' FROM THE NORTH LINE AND 391' FROM THE WEST LINE OF SECTION 4, TOWNSHIP 4 SOUTH, RANGE 65 WEST OF THE 6TH P.M., ARAPAHOE COUNTY, COLORADO.



PETER ELLIOTT PAULUS COLORADO PLS 38318
DATE OF SURVEY: 01/09/2018 (SECTION CONTROL)
DATE OF SURVEY: 01/18/2018 (WELL LOCATION)

NOTES:

- DISTANCES ARE MEASURED PERPENDICULAR TO NEAREST SECTION LINE AND ARE SHOWN ON THE SAME SIDE OF THE SECTION LINE WHERE THE WELL IS LOCATED.
- THIS MAP DOES NOT REPRESENT A MONUMENTED BOUNDARY SURVEY. SIXTEENTH CORNER LOCATIONS ARE COMPUTED, UNLESS OTHERWISE NOTED.
- BOTTOM HOLE LOCATIONS AND HORIZONTAL COMPLETION ZONE PROVIDED BY OTHERS.
- ALL REBAR AND CAPS ARE MEASURED IN INCHES

BASIS OF BEARING:

THE WEST LINE OF THE SOUTHWEST QUARTER OF SECTION 4-T4S-R65W BEARS N00°22'38\"W FOR 2647.43 FT BETWEEN THE SOUTHWEST CORNER OF SECTION 4 MONUMENTED WITH 2 1/2\" A.C. IN R.B. STAMPED \"PLS 29430\" AND THE WEST QUARTER CORNER OF SECTION 4 MONUMENTED WITH 3 1/4\" A.C. IN R.B. STAMPED \"LS 34178\" BASED ON THE COLORADO CENTRAL 0502 STATE PLANE COORDINATE SYSTEM.

ELEVATIONS ARE BASED ON NAVD 88, AS OBSERVED FROM GPS OBSERVATIONS



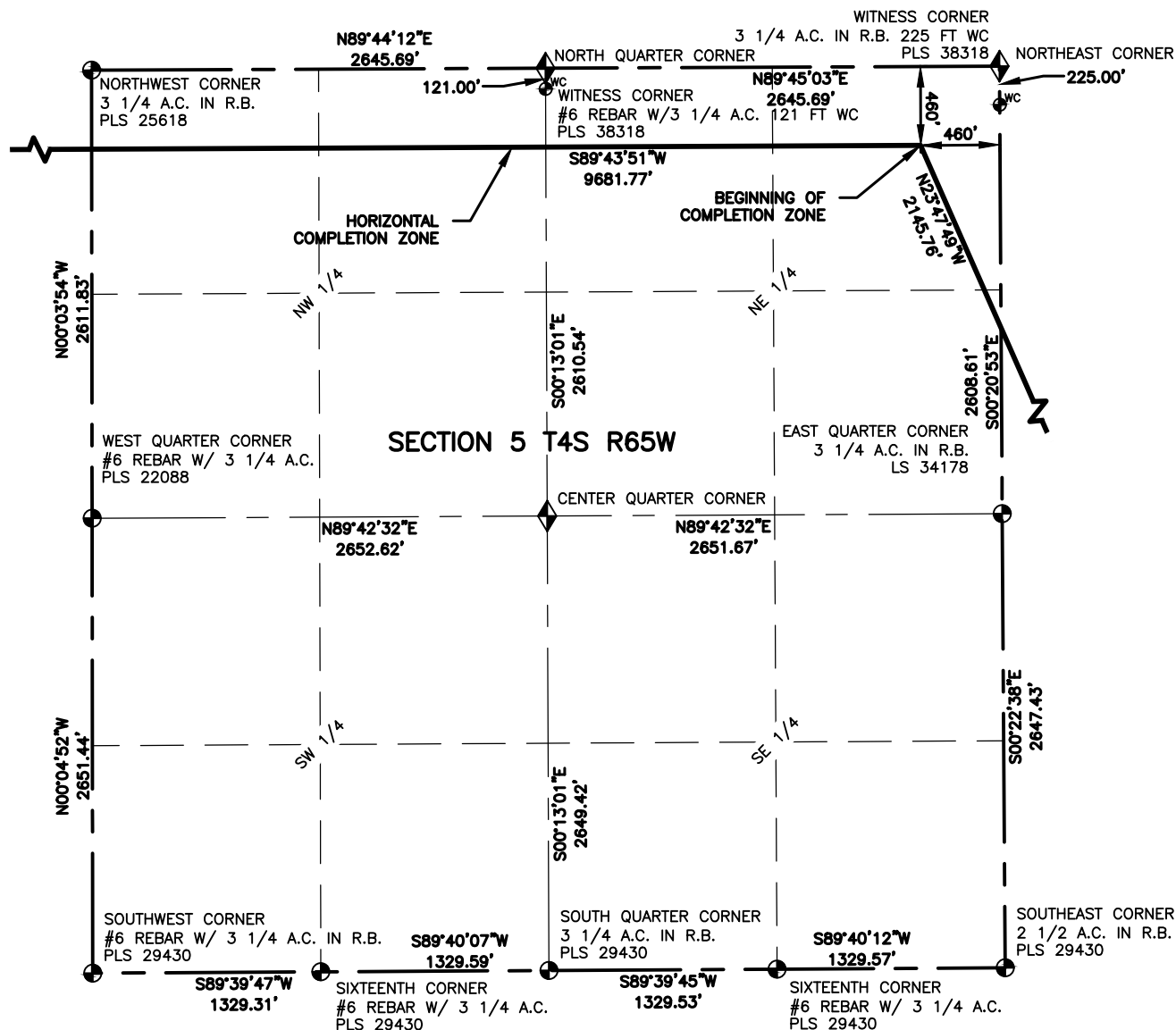
LAMP RYNEARSON
& ASSOCIATES

4715 Innovation Drive 970.226.0342 | P
Fort Collins, CO 80525 970.226.0879 | F
www.LRA-inc.com

PROPOSED WELL LOCATION EXHIBIT
JAMASO 4-65 5-6-1
1 OF 3

DRAWN BY	DATE	COGCC ID	PROJECT - TASK NUMBER	BOOK AND PAGE	SURFACE - LOCATION
CPP	03/30		0218003.03		NW/4 SW/4 SEC 4 T4S R65W, CITY OF AURORA

PATH\FILENAME L:\Engineering\0218003.03 XOG - Jamaso\SURVEY\DRAWINGS\EXHIBITS\0218003.03 WP-F1.dwg



LEGEND

- | | | | |
|--|-------------------------|------|---------------|
| | ALIQUOT CORNER | | PROPOSED WELL |
| | COMPUTED ALIQUOT CORNER | A.C. | ALUMINUM CAP |
| | BOTTOM HOLE | R.B. | RANGE BOX |

NOTES:

- DISTANCES ARE MEASURED PERPENDICULAR TO NEAREST SECTION LINE AND ARE SHOWN ON THE SAME SIDE OF THE SECTION LINE WHERE THE WELL IS LOCATED.
- THIS MAP DOES NOT REPRESENT A MONUMENTED BOUNDARY SURVEY. SIXTEENTH CORNER LOCATIONS ARE COMPUTED, UNLESS OTHERWISE NOTED.
- BOTTOM HOLE LOCATIONS AND HORIZONTAL COMPLETION ZONE PROVIDED BY OTHERS.
- ALL REBAR AND CAPS ARE MEASURED IN INCHES.



0 1000
SCALE: 1"= 1000'
U.S. SURVEY FEET



LAMP RYNEARSON
& ASSOCIATES

4715 Innovation Drive 970.226.0342 | P
Fort Collins, CO 80525 970.226.0879 | F
www.LRA-inc.com

PROPOSED WELL LOCATION EXHIBIT
JAMASO 4-65 5-6-1
2 OF 3

DRAWN BY
CPP

DATE

COGCC ID

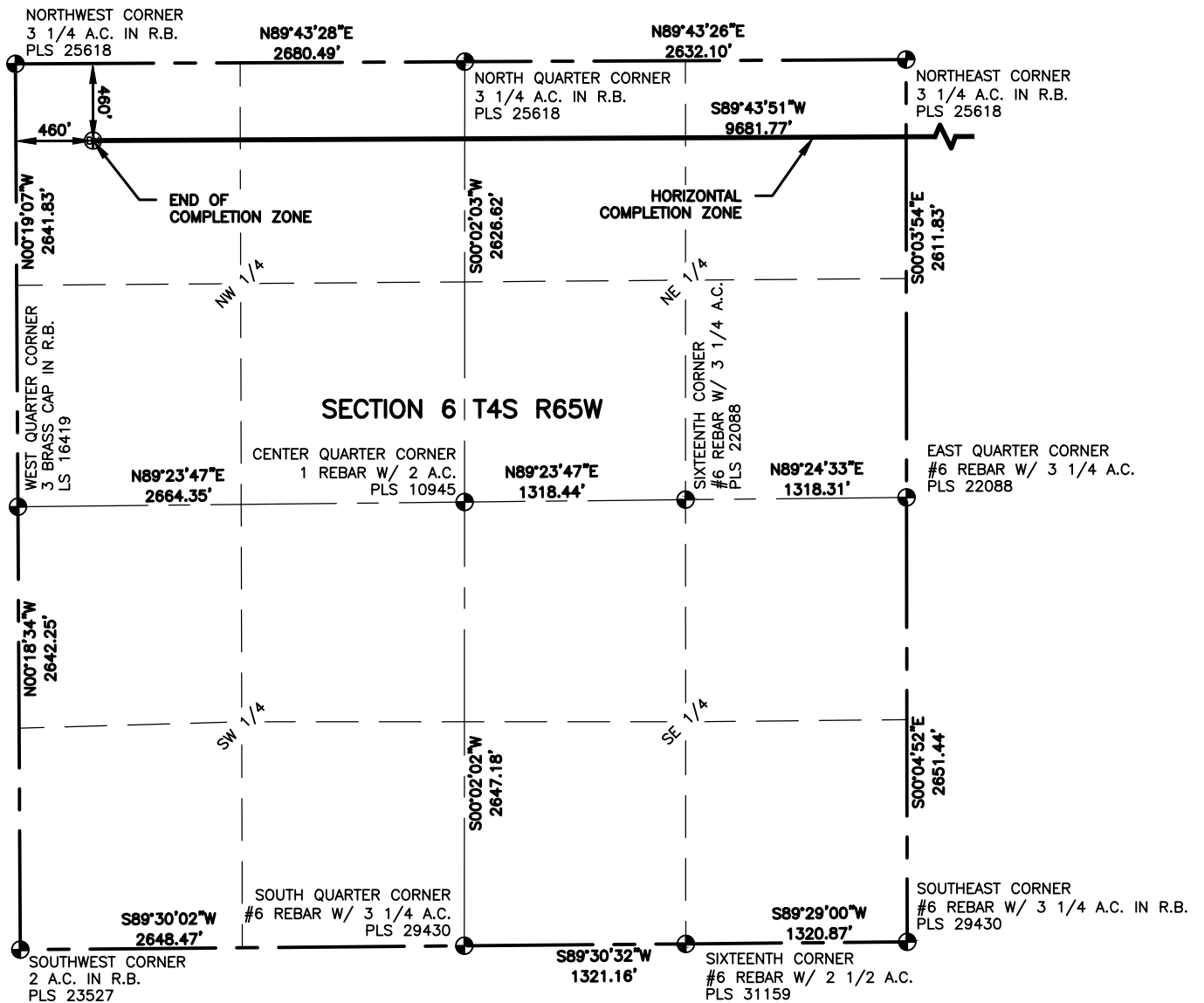
PROJECT - TASK NUMBER
0218003.03

BOOK AND PAGE

SURFACE - LOCATION

PATH\FILENAME L:\Engineering\0218003.03 XOG - Jamaso\SURVEY\DRAWINGS\EXHIBITS\0218003.03 WP-F2.dwg

NW/4 SW/4 SEC 4 T4S R65W,
CITY OF AURORA



LEGEND

- ⊙ ALIQUOT CORNER
- ⊙ PROPOSED WELL
- ⬠ COMPUTED ALIQUOT CORNER
- A.C. ALUMINUM CAP
- ⊙ BOTTOM HOLE
- R.B. RANGE BOX

NOTES:

- DISTANCES ARE MEASURED PERPENDICULAR TO NEAREST SECTION LINE AND ARE SHOWN ON THE SAME SIDE OF THE SECTION LINE WHERE THE WELL IS LOCATED.
- THIS MAP DOES NOT REPRESENT A MONUMENTED BOUNDARY SURVEY. SIXTEENTH CORNER LOCATIONS ARE COMPUTED, UNLESS OTHERWISE NOTED.
- BOTTOM HOLE LOCATIONS AND HORIZONTAL COMPLETION ZONE PROVIDED BY OTHERS.
- ALL REBAR AND CAPS ARE MEASURED IN INCHES.



0 1000
SCALE: 1" = 1000'
U.S. SURVEY FEET



LAMP RYNEARSON
& ASSOCIATES

4715 Innovation Drive 970.226.0342 | P
Fort Collins, CO 80525 970.226.0879 | F
www.LRA-inc.com

PROPOSED WELL LOCATION EXHIBIT
JAMASO 4-65 5-6-1
3 OF 3

DRAWN BY	DATE	COGCC ID	PROJECT - TASK NUMBER	BOOK AND PAGE
CPP	03/30		0218003.03	

PATH\FILENAME L:\Engineering\0218003.03 XOG - Jamaso\SURVEY\DRAWINGS\EXHIBITS\0218003.03 WP-F3.dwg

SURFACE - LOCATION
NW/4 SW/4 SEC 4 T4S R65W,
CITY OF AURORA