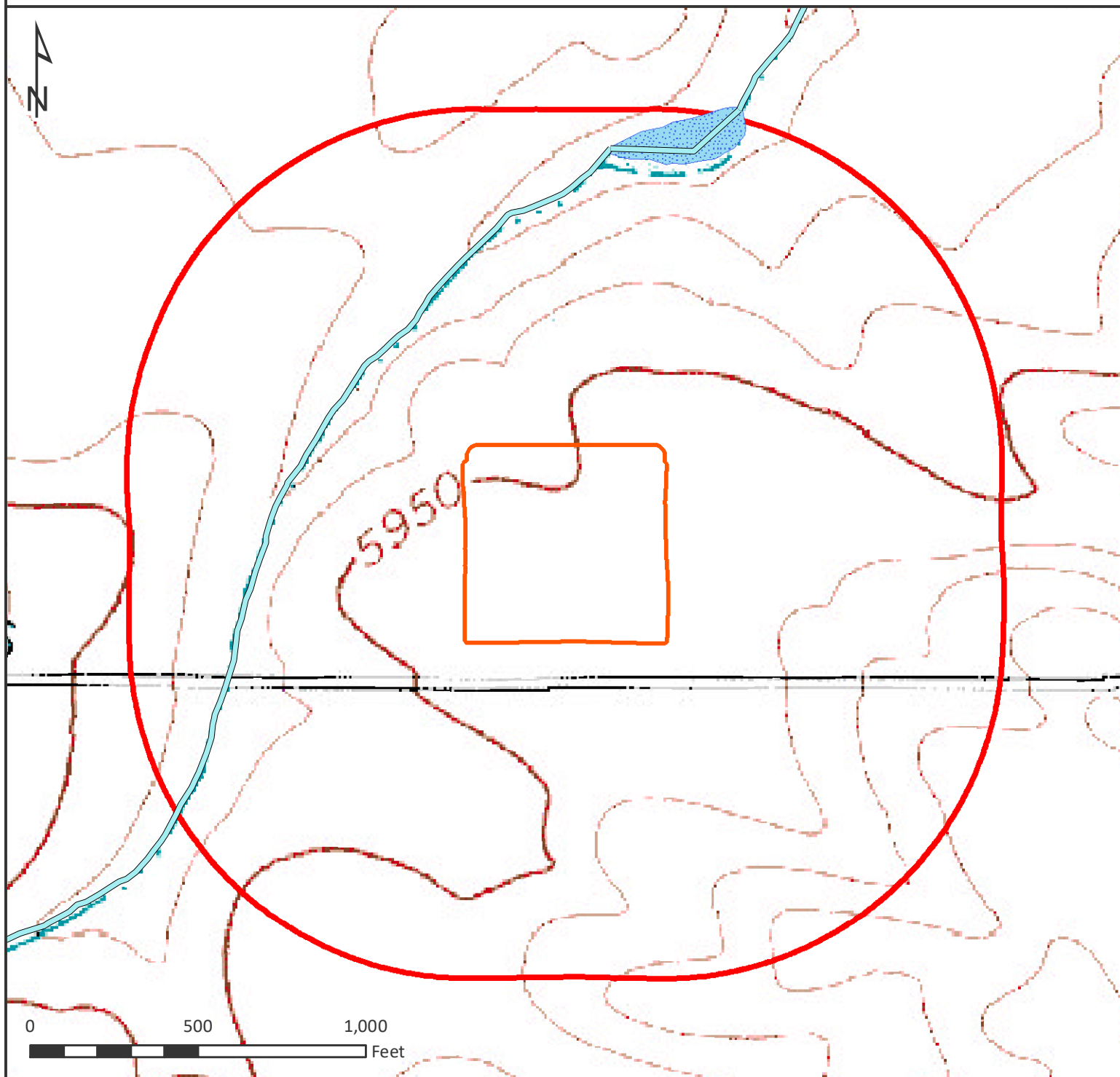


# HYDROLOGY MAP

## RESOLUTION FED 12-65-29-20-4NH





### Nearest Surface Water Features

Intermittent Stream: 388' NW Elev: 5928'  
Intermittent Stream: 838' N Elev: 5921'  
Other: 880' N Elev: 5921'  
Loc Elev: 5955'

All measurements are made from  
edge of disturbed area.

### Legend

-  WELL PAD (PROPOSED)
-  1000' BUFFER



Date created: 4/9/2018  
Created by: APC Regulatory GIS  
Scale: 1:5,000  
Projection: NAD83 UTM 13N