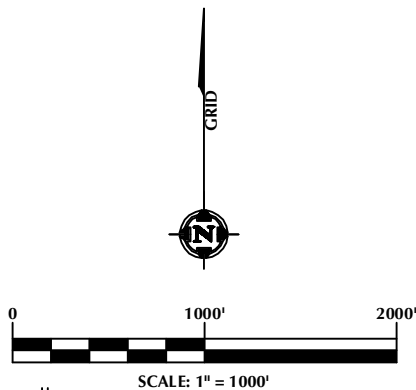


MATCH LINE
SEE SHEET 1B

NE. COR.
SEC. 29, T12N, R65W
FOUND STONE

SE. COR.
SEC. 29, T12N, R65W
SET ALUM. CAP
/ L.S. NO. 38305

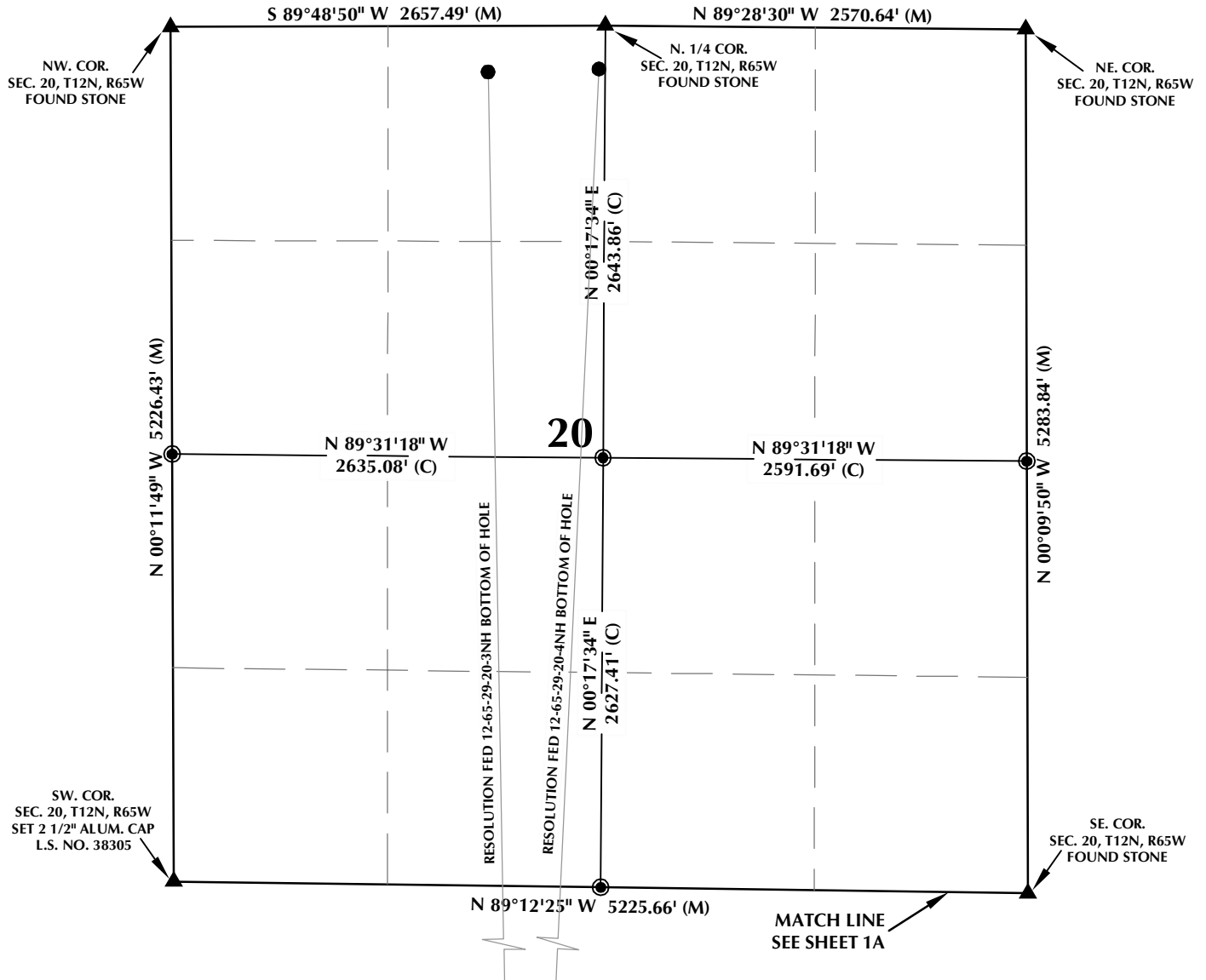
1. ▲ INDICATES FOUND SECTION CORNER
2. ◎ INDICATES CALCULATED CORNER
3. BASIS OF BEARING DERIVED FROM COLORADO COORDINATE SYSTEM 1983 NORTH ZONE UNLESS OTHERWISE NOTED.
4. ALL MEASURED DISTANCES ARE GRID.
COMBINED SCALE FACTOR: .99975846
5. WELL FOOTAGES ARE MEASURED AT RIGHT ANGLES TO THE SECTION LINES.



LOVELAND OFFICE
1635 Foxtrail Drive, Suite 204
Loveland, Colorado 80538
Phone 970-776-4331

DRAFTED BY: MDZ	CHECKED BY: BJR	SHEET NO: 1A 1A OF 1
DATE DRAFTED: 1/26/15	DATE SURVEYED: 12/10/14	
REVISED: 2/3/15	FILE NAME: 14-52	

RESOLUTION FED 12-65-29-20-4NH T12N, R65W

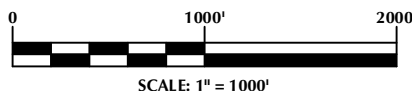


WELL NOTES:

RESOLUTION FED 12-65-29-20-3NH
SURFACE: 380' FSL, 2135' FWL
BOTTOM HOLE: 281' FNL, 1940' FWL
RESOLUTION FED 12-65-29-20-4NH
SURFACE: 380' FSL, 2165' FWL
BOTTOM HOLE: 266' FNL, 2618' FWL

NOTES:

- ▲ INDICATES FOUND SECTION CORNER
- INDICATES CALCULATED CORNER
- BASIS OF BEARING DERIVED FROM COLORADO COORDINATE SYSTEM 1983 NORTH ZONE UNLESS OTHERWISE NOTED.
- ALL MEASURED DISTANCES ARE GRID.
- COMBINED SCALE FACTOR: .99975846
- WELL FOOTAGES ARE MEASURED AT RIGHT ANGLES TO THE SECTION LINES.



WELL PAD - RESOLUTION FED 12-65-29-20-4NH

MULTI-WELL PLAN
RESOLUTION FED 12-65-29-20-3NH &
RESOLUTION FED 12-65-29-20-4NH
LOCATED IN SECTIONS 29 & 20
T12N, R65W, 6TH P.M.
WELD COUNTY, COLORADO

Anadarko E&P
Onshore LLC
1099 18th Street
Denver, Colorado 80202



CONSULTING, LLC

SHERIDAN OFFICE
1095 Saberton Avenue
Sheridan, Wyoming 82801
Phone 307-674-0609

LOVELAND OFFICE
1635 Foxtrail Drive, Suite 204
Loveland, Colorado 80538
Phone 970-776-4331

DRAFTED BY:	MDZ	CHECKED BY:	BJR	SHEET NO:
DATE DRAFTED:	1/26/15	DATE SURVEYED:	12/10/14	1B
REVISED:	2/3/15	FILE NAME:	14-52	1B OF 1