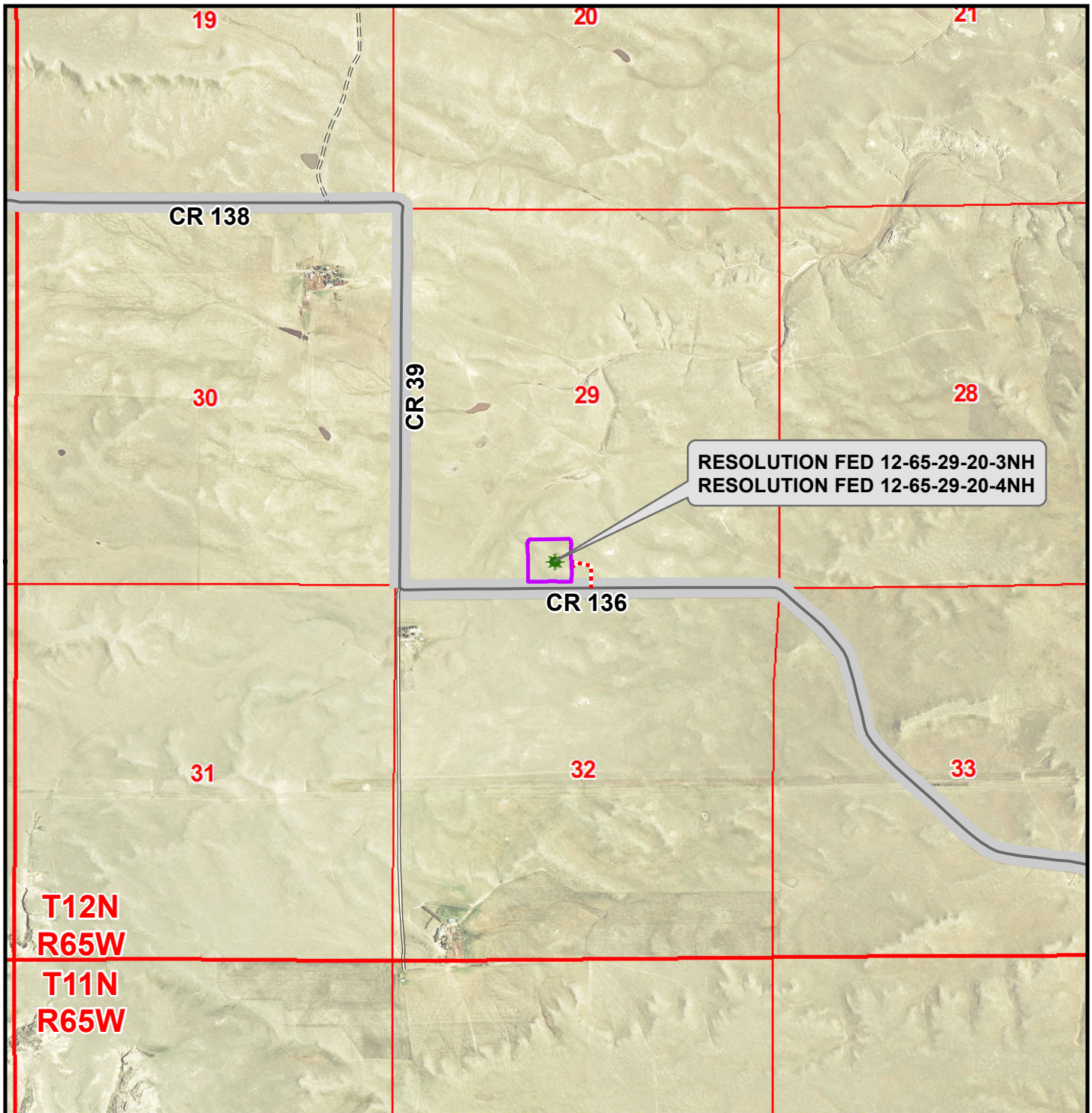


K:\ANADARKO\2014\2014\_52\_RESOLUTION\_PROSPECT\_WELLS\_COIGISMaps\_ABCDIResolutionFed 12-65-29-20\4NH\ResolutionFed 12-65-29-20-4NH Access.mxd 2/3/2015 1:49:07 PM



**Legend**

- Well - Fed - Proposed    Access Road - Proposed    Road - Improved - Existing    Road - Highway - Existing  
 Disturbance Area    Road - Primitive - Existing    Road - County - Existing

WELL PAD - RESOLUTION FED 12-65-29-20-4NH

**ACCESS ROAD MAP**  
**RESOLUTION FED 12-65-29-20-3NH &**  
**RESOLUTION FED 12-65-29-20-4NH**  
**LOCATED IN SECTION 29**  
**T12N, R65W, 6th P.M.**  
**WELD COUNTY, COLORADO**

**Anadarko E&P**  
**Onshore LLC**

**1099 18th Street**  
**Denver, CO 80202**



**CONSULTING, LLC**

**SHERIDAN OFFICE**  
2155 North Main Street  
Sheridan, Wyoming 82801  
Phone 307-674-0609

**LOVELAND OFFICE**  
1635 Foxtail Drive, Suite 204  
Loveland, Colorado 80538  
Phone 970-776-4331



SCALE: 1" = 2,000ft

NAD83 CO-Nft

DRAWN: JELO

DATE: 26 Jan 2015

REVISED: TL

DATE: 3 Feb 2015