

SRC ENERGY

WELD COUNTY (NAD83, TRUE NORTH)

5N-66W-07 BOST FARM 5-7 PAD

BOST FARM 26N-8B-L

Wellbore #1

Plan: Design #1

Standard Planning Report

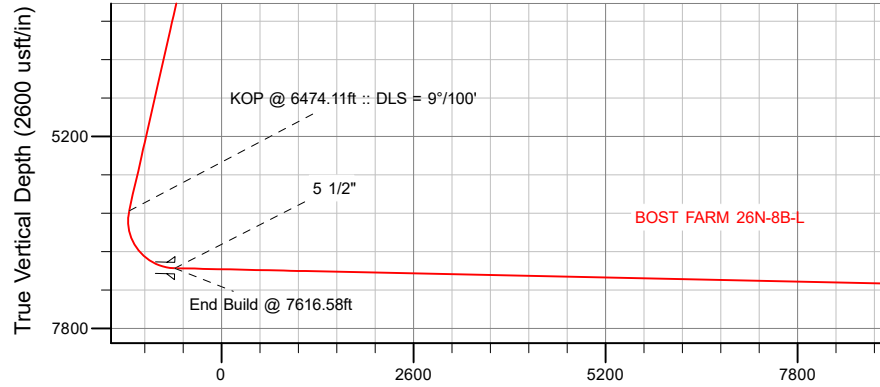
28 December, 2017

Project: WELD COUNTY (NAD83, TRUE NORTH)
Site: 5N-66W-07 BOST FARM 5-7 PAD
Well: BOST FARM 26N-8B-L
Wellbore: Wellbore #1
Design: Design #1

SRC ENERGY

CASING DETAILS

TVD	MD	Name	Size
1750.00	1795.08	9 5/8"	9-5/8
6986.00	7616.58	5 1/2"	5-1/2



Vertical Section at 82.67° (2600 usft/in)

West(-)/East(+) (1600 usft/in)

SECTION DETAILS

Sec	MD	Inc	Azi	TVD	+N/-S	+E/-W	Dleg	TFace	VSec	Target
1	0.00	0.00	0.00	0.00	0.00	0.00	0.00	0.00	0.00	
2	250.00	0.00	0.00	250.00	0.00	0.00	0.00	0.00	0.00	
3	1132.50	17.65	307.10	1118.61	81.35	-107.56	2.00	307.10	-96.30	
4	6474.11	17.65	307.10	6208.77	1058.29	-1399.31	0.00	0.00	-1252.89	
5	7616.58	88.78	90.14	6986.00	1202.26	-794.63	9.00	141.94	-634.78	
6	17573.34	88.78	90.14	7198.00	1178.03	9159.85	0.00	0.00	9235.29	BOST FARM 26N-8B-L_BHL

WELLBORE TARGET DETAILS (LAT/LONG)

Name	TVD	+N/-S	+E/-W	Latitude	Longitude
BOST FARM 26N-8B-L_SHL	0.00	0.00	0.00	40.417976	-104.829009
BOST FARM 26N-8B-L_BHL	7198.00	1178.03	9159.85	40.421205	-104.796110

WELL DETAILS: BOST FARM 26N-8B-L

GL = 4881'

RKB = 20' @ 4901.00usft (PD 462)

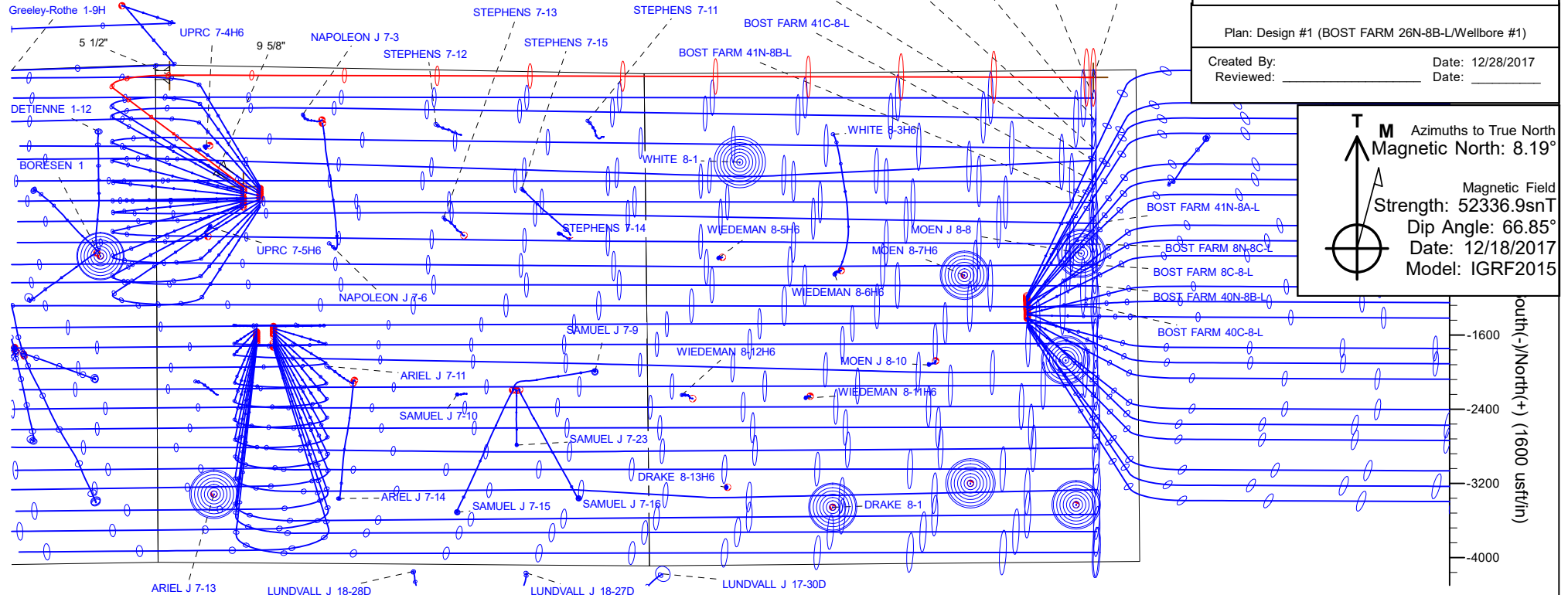
Plan: Design #1 (BOST FARM 26N-8B-L/Wellbore #1)

Created By: _____ Date: 12/28/2017
Reviewed: _____ Date: _____

SHL
1297' FNL
942' FWL

LP
117' FNL
150' FWL
40.421255° Lat
-104.831873° Long

BHL
77' FNL
460' FEL



Hewlett-Packard

Planning Report

Database:	EDM 5000.14 Single User Db	Local Co-ordinate Reference:	Well BOST FARM 26N-8B-L
Company:	SRC ENERGY	TVD Reference:	RKB = 20' @ 4901.00usft (PD 462)
Project:	WELD COUNTY (NAD83, TRUE NORTH)	MD Reference:	RKB = 20' @ 4901.00usft (PD 462)
Site:	5N-66W-07 BOST FARM 5-7 PAD	North Reference:	True
Well:	BOST FARM 26N-8B-L	Survey Calculation Method:	Minimum Curvature
Wellbore:	Wellbore #1		
Design:	Design #1		

Project	WELD COUNTY (NAD83, TRUE NORTH)		
Map System:	US State Plane 1983	System Datum:	Mean Sea Level
Geo Datum:	North American Datum 1983		
Map Zone:	Colorado Northern Zone		

Site	5N-66W-07 BOST FARM 5-7 PAD			
Site Position:		Northing:	1,395,815.76 usft	Latitude: 40.417972
From:	Lat/Long	Easting:	3,187,006.76 usft	Longitude: -104.828362
Position Uncertainty:	0.00 usft	Slot Radius:	13-3/16 "	Grid Convergence: 0.43 °

Well	BOST FARM 26N-8B-L					
Well Position	+N/-S	1.45 usft	Northing:	1,395,815.85 usft	Latitude:	40.417976
	+E/-W	-180.15 usft	Easting:	3,186,826.61 usft	Longitude:	-104.829009
Position Uncertainty		3.28 usft	Wellhead Elevation:		Ground Level:	4,881.00 usft

Wellbore	Wellbore #1				
Magnetics	Model Name	Sample Date	Declination (°)	Dip Angle (°)	Field Strength (nT)
	IGRF2015	12/18/2017	8.19	66.85	52,336.87271749

Design	Design #1			
Audit Notes:				
Version:		Phase:	PLAN	Tie On Depth: 0.00
Vertical Section:	Depth From (TVD) (usft)	+N/-S (usft)	+E/-W (usft)	Direction (°)
	0.00	0.00	0.00	82.67

Plan Survey Tool Program	Date	12/28/2017		
Depth From (usft)	Depth To (usft)	Survey (Wellbore)	Tool Name	Remarks
1	0.00	1,750.00	Design #1 (Wellbore #1)	SRC Energy_ISCWSA REV 2 Fixed:v2:crustal field declinatio
2	1,750.00	17,573.34	Design #1 (Wellbore #1)	SRC Energy_ISCWSA REV 2 Fixed:v2:crustal field declinatio

Plan Sections										
Measured Depth (usft)	Inclination (°)	Azimuth (°)	Vertical Depth (usft)	+N/-S (usft)	+E/-W (usft)	Dogleg Rate (°/100usft)	Build Rate (°/100usft)	Turn Rate (°/100usft)	TFO (°)	Target
0.00	0.00	0.00	0.00	0.00	0.00	0.00	0.00	0.00	0.00	
250.00	0.00	0.00	250.00	0.00	0.00	0.00	0.00	0.00	0.00	
1,132.50	17.65	307.10	1,118.61	81.35	-107.56	2.00	2.00	0.00	307.10	
6,474.11	17.65	307.10	6,208.77	1,058.29	-1,399.31	0.00	0.00	0.00	0.00	
7,616.58	88.78	90.14	6,986.00	1,202.26	-794.63	9.00	6.23	12.52	141.94	
17,573.34	88.78	90.14	7,198.00	1,178.03	9,159.85	0.00	0.00	0.00	0.00	BOST FARM 26N-8B-

Hewlett-Packard

Planning Report

Database:	EDM 5000.14 Single User Db	Local Co-ordinate Reference:	Well BOST FARM 26N-8B-L
Company:	SRC ENERGY	TVD Reference:	RKB = 20' @ 4901.00usft (PD 462)
Project:	WELD COUNTY (NAD83, TRUE NORTH)	MD Reference:	RKB = 20' @ 4901.00usft (PD 462)
Site:	5N-66W-07 BOST FARM 5-7 PAD	North Reference:	True
Well:	BOST FARM 26N-8B-L	Survey Calculation Method:	Minimum Curvature
Wellbore:	Wellbore #1		
Design:	Design #1		

Planned Survey									
Measured Depth (usft)	Inclination (°)	Azimuth (°)	Vertical Depth (usft)	+N/-S (usft)	+E/-W (usft)	Vertical Section (usft)	Dogleg Rate (°/100usft)	Build Rate (°/100usft)	Turn Rate (°/100usft)
0.00	0.00	0.00	0.00	0.00	0.00	0.00	0.00	0.00	0.00
100.00	0.00	0.00	100.00	0.00	0.00	0.00	0.00	0.00	0.00
200.00	0.00	0.00	200.00	0.00	0.00	0.00	0.00	0.00	0.00
250.00	0.00	0.00	250.00	0.00	0.00	0.00	0.00	0.00	0.00
Begin Nudge @ 250.00ft									
300.00	1.00	307.10	300.00	0.26	-0.35	-0.31	2.00	2.00	0.00
400.00	3.00	307.10	399.93	2.37	-3.13	-2.80	2.00	2.00	0.00
500.00	5.00	307.10	499.68	6.58	-8.69	-7.78	2.00	2.00	0.00
600.00	7.00	307.10	599.13	12.88	-17.03	-15.25	2.00	2.00	0.00
700.00	9.00	307.10	698.15	21.28	-28.13	-25.19	2.00	2.00	0.00
800.00	11.00	307.10	796.63	31.75	-41.98	-37.59	2.00	2.00	0.00
900.00	13.00	307.10	894.44	44.29	-58.56	-52.43	2.00	2.00	0.00
1,000.00	15.00	307.10	991.46	58.88	-77.86	-69.71	2.00	2.00	0.00
1,100.00	17.00	307.10	1,087.58	75.51	-99.84	-89.39	2.00	2.00	0.00
1,132.50	17.65	307.10	1,118.61	81.35	-107.56	-96.30	2.00	2.00	0.00
End Nudge @ 1132.50ft									
1,200.00	17.65	307.10	1,182.93	93.69	-123.88	-110.92	0.00	0.00	0.00
1,300.00	17.65	307.10	1,278.22	111.98	-148.07	-132.57	0.00	0.00	0.00
1,400.00	17.65	307.10	1,373.52	130.27	-172.25	-154.22	0.00	0.00	0.00
1,500.00	17.65	307.10	1,468.81	148.56	-196.43	-175.88	0.00	0.00	0.00
1,600.00	17.65	307.10	1,564.10	166.85	-220.61	-197.53	0.00	0.00	0.00
1,700.00	17.65	307.10	1,659.39	185.14	-244.80	-219.18	0.00	0.00	0.00
1,795.08	17.65	307.10	1,750.00	202.53	-267.79	-239.77	0.00	0.00	0.00
9 5/8"									
1,800.00	17.65	307.10	1,754.69	203.43	-268.98	-240.83	0.00	0.00	0.00
1,900.00	17.65	307.10	1,849.98	221.72	-293.16	-262.49	0.00	0.00	0.00
2,000.00	17.65	307.10	1,945.27	240.01	-317.35	-284.14	0.00	0.00	0.00
2,100.00	17.65	307.10	2,040.56	258.30	-341.53	-305.79	0.00	0.00	0.00
2,200.00	17.65	307.10	2,135.86	276.59	-365.71	-327.44	0.00	0.00	0.00
2,300.00	17.65	307.10	2,231.15	294.87	-389.89	-349.10	0.00	0.00	0.00
2,400.00	17.65	307.10	2,326.44	313.16	-414.08	-370.75	0.00	0.00	0.00
2,500.00	17.65	307.10	2,421.74	331.45	-438.26	-392.40	0.00	0.00	0.00
2,600.00	17.65	307.10	2,517.03	349.74	-462.44	-414.05	0.00	0.00	0.00
2,700.00	17.65	307.10	2,612.32	368.03	-486.63	-435.71	0.00	0.00	0.00
2,800.00	17.65	307.10	2,707.61	386.32	-510.81	-457.36	0.00	0.00	0.00
2,900.00	17.65	307.10	2,802.91	404.61	-534.99	-479.01	0.00	0.00	0.00
3,000.00	17.65	307.10	2,898.20	422.90	-559.17	-500.66	0.00	0.00	0.00
3,100.00	17.65	307.10	2,993.49	441.19	-583.36	-522.31	0.00	0.00	0.00
3,200.00	17.65	307.10	3,088.78	459.48	-607.54	-543.97	0.00	0.00	0.00
3,300.00	17.65	307.10	3,184.08	477.77	-631.72	-565.62	0.00	0.00	0.00
3,400.00	17.65	307.10	3,279.37	496.06	-655.91	-587.27	0.00	0.00	0.00
3,500.00	17.65	307.10	3,374.66	514.35	-680.09	-608.92	0.00	0.00	0.00
3,600.00	17.65	307.10	3,469.95	532.64	-704.27	-630.58	0.00	0.00	0.00
3,700.00	17.65	307.10	3,565.25	550.93	-728.45	-652.23	0.00	0.00	0.00
3,800.00	17.65	307.10	3,660.54	569.21	-752.64	-673.88	0.00	0.00	0.00
3,900.00	17.65	307.10	3,755.83	587.50	-776.82	-695.53	0.00	0.00	0.00
4,000.00	17.65	307.10	3,851.13	605.79	-801.00	-717.19	0.00	0.00	0.00
4,100.00	17.65	307.10	3,946.42	624.08	-825.19	-738.84	0.00	0.00	0.00
4,200.00	17.65	307.10	4,041.71	642.37	-849.37	-760.49	0.00	0.00	0.00
4,300.00	17.65	307.10	4,137.00	660.66	-873.55	-782.14	0.00	0.00	0.00
4,400.00	17.65	307.10	4,232.30	678.95	-897.73	-803.80	0.00	0.00	0.00
4,500.00	17.65	307.10	4,327.59	697.24	-921.92	-825.45	0.00	0.00	0.00
4,600.00	17.65	307.10	4,422.88	715.53	-946.10	-847.10	0.00	0.00	0.00

Hewlett-Packard

Planning Report

Database:	EDM 5000.14 Single User Db	Local Co-ordinate Reference:	Well BOST FARM 26N-8B-L
Company:	SRC ENERGY	TVD Reference:	RKB = 20' @ 4901.00usft (PD 462)
Project:	WELD COUNTY (NAD83, TRUE NORTH)	MD Reference:	RKB = 20' @ 4901.00usft (PD 462)
Site:	5N-66W-07 BOST FARM 5-7 PAD	North Reference:	True
Well:	BOST FARM 26N-8B-L	Survey Calculation Method:	Minimum Curvature
Wellbore:	Wellbore #1		
Design:	Design #1		

Planned Survey									
Measured Depth (usft)	Inclination (°)	Azimuth (°)	Vertical Depth (usft)	+N/-S (usft)	+E/-W (usft)	Vertical Section (usft)	Dogleg Rate (°/100usft)	Build Rate (°/100usft)	Turn Rate (°/100usft)
4,700.00	17.65	307.10	4,518.17	733.82	-970.28	-868.75	0.00	0.00	0.00
4,800.00	17.65	307.10	4,613.47	752.11	-994.47	-890.41	0.00	0.00	0.00
4,900.00	17.65	307.10	4,708.76	770.40	-1,018.65	-912.06	0.00	0.00	0.00
5,000.00	17.65	307.10	4,804.05	788.69	-1,042.83	-933.71	0.00	0.00	0.00
5,100.00	17.65	307.10	4,899.34	806.98	-1,067.01	-955.36	0.00	0.00	0.00
5,200.00	17.65	307.10	4,994.64	825.27	-1,091.20	-977.01	0.00	0.00	0.00
5,300.00	17.65	307.10	5,089.93	843.56	-1,115.38	-998.67	0.00	0.00	0.00
5,400.00	17.65	307.10	5,185.22	861.84	-1,139.56	-1,020.32	0.00	0.00	0.00
5,500.00	17.65	307.10	5,280.51	880.13	-1,163.75	-1,041.97	0.00	0.00	0.00
5,600.00	17.65	307.10	5,375.81	898.42	-1,187.93	-1,063.62	0.00	0.00	0.00
5,700.00	17.65	307.10	5,471.10	916.71	-1,212.11	-1,085.28	0.00	0.00	0.00
5,800.00	17.65	307.10	5,566.39	935.00	-1,236.29	-1,106.93	0.00	0.00	0.00
5,900.00	17.65	307.10	5,661.69	953.29	-1,260.48	-1,128.58	0.00	0.00	0.00
6,000.00	17.65	307.10	5,756.98	971.58	-1,284.66	-1,150.23	0.00	0.00	0.00
6,100.00	17.65	307.10	5,852.27	989.87	-1,308.84	-1,171.89	0.00	0.00	0.00
6,200.00	17.65	307.10	5,947.56	1,008.16	-1,333.03	-1,193.54	0.00	0.00	0.00
6,300.00	17.65	307.10	6,042.86	1,026.45	-1,357.21	-1,215.19	0.00	0.00	0.00
6,400.00	17.65	307.10	6,138.15	1,044.74	-1,381.39	-1,236.84	0.00	0.00	0.00
6,474.11	17.65	307.10	6,208.77	1,058.29	-1,399.31	-1,252.89	0.00	0.00	0.00
KOP @ 6474.11ft :: DLS = 9°/100'									
6,500.00	15.88	312.36	6,233.56	1,063.05	-1,405.06	-1,257.99	9.00	-6.84	20.30
6,550.00	12.95	326.19	6,282.00	1,072.32	-1,413.24	-1,264.91	9.00	-5.85	27.67
6,600.00	11.11	346.04	6,330.92	1,081.65	-1,417.52	-1,267.97	9.00	-3.68	39.70
6,650.00	10.92	9.74	6,380.02	1,091.00	-1,417.88	-1,267.14	9.00	-0.39	47.39
6,700.00	12.44	30.80	6,429.01	1,100.30	-1,414.32	-1,262.42	9.00	3.06	42.13
6,750.00	15.19	45.86	6,477.57	1,109.49	-1,406.86	-1,253.84	9.00	5.48	30.12
6,800.00	18.61	55.97	6,525.41	1,118.52	-1,395.54	-1,241.47	9.00	6.85	20.21
6,850.00	22.41	62.89	6,572.24	1,127.33	-1,380.44	-1,225.36	9.00	7.59	13.85
6,900.00	26.42	67.85	6,617.77	1,135.87	-1,361.65	-1,205.63	9.00	8.02	9.92
6,950.00	30.55	71.57	6,661.71	1,144.09	-1,339.28	-1,182.40	9.00	8.28	7.44
7,000.00	34.78	74.47	6,703.79	1,151.93	-1,313.47	-1,155.80	9.00	8.44	5.80
7,050.00	39.05	76.81	6,743.77	1,159.35	-1,284.38	-1,126.01	9.00	8.55	4.68
7,100.00	43.37	78.75	6,781.37	1,166.29	-1,252.19	-1,093.19	9.00	8.63	3.89
7,150.00	47.71	80.40	6,816.39	1,172.73	-1,217.10	-1,057.57	9.00	8.69	3.31
7,200.00	52.07	81.84	6,848.60	1,178.61	-1,179.33	-1,019.36	9.00	8.73	2.88
7,250.00	56.45	83.12	6,877.79	1,183.91	-1,139.10	-978.78	9.00	8.76	2.56
7,300.00	60.84	84.28	6,903.80	1,188.58	-1,096.67	-936.10	9.00	8.78	2.31
7,350.00	65.24	85.34	6,926.47	1,192.61	-1,052.30	-891.58	9.00	8.80	2.12
7,400.00	69.65	86.32	6,945.64	1,195.96	-1,006.26	-845.49	9.00	8.81	1.97
7,450.00	74.06	87.26	6,961.21	1,198.61	-958.83	-798.11	9.00	8.82	1.86
7,500.00	78.48	88.15	6,973.08	1,200.55	-910.31	-749.74	9.00	8.83	1.78
7,550.00	82.89	89.01	6,981.17	1,201.77	-861.00	-700.67	9.00	8.84	1.73
7,600.00	87.31	89.86	6,985.44	1,202.26	-811.20	-651.22	9.00	8.84	1.70
7,616.58	88.78	90.14	6,986.00	1,202.26	-794.63	-634.78	9.00	8.84	1.68
End Build @ 7616.58ft - 5 1/2"									
7,700.00	88.78	90.14	6,987.78	1,202.06	-711.23	-552.09	0.00	0.00	0.00
7,800.00	88.78	90.14	6,989.91	1,201.82	-611.25	-452.96	0.00	0.00	0.00
7,900.00	88.78	90.14	6,992.03	1,201.57	-511.27	-353.83	0.00	0.00	0.00
8,000.00	88.78	90.14	6,994.16	1,201.33	-411.30	-254.70	0.00	0.00	0.00
8,100.00	88.78	90.14	6,996.29	1,201.09	-311.32	-155.57	0.00	0.00	0.00
8,200.00	88.78	90.14	6,998.42	1,200.84	-211.34	-56.44	0.00	0.00	0.00
8,300.00	88.78	90.14	7,000.55	1,200.60	-111.37	42.69	0.00	0.00	0.00
8,400.00	88.78	90.14	7,002.68	1,200.36	-11.39	141.82	0.00	0.00	0.00
8,500.00	88.78	90.14	7,004.81	1,200.11	88.59	240.95	0.00	0.00	0.00

Hewlett-Packard

Planning Report

Database:	EDM 5000.14 Single User Db	Local Co-ordinate Reference:	Well BOST FARM 26N-8B-L
Company:	SRC ENERGY	TVD Reference:	RKB = 20' @ 4901.00usft (PD 462)
Project:	WELD COUNTY (NAD83, TRUE NORTH)	MD Reference:	RKB = 20' @ 4901.00usft (PD 462)
Site:	5N-66W-07 BOST FARM 5-7 PAD	North Reference:	True
Well:	BOST FARM 26N-8B-L	Survey Calculation Method:	Minimum Curvature
Wellbore:	Wellbore #1		
Design:	Design #1		

Planned Survey										
Measured Depth (usft)	Inclination (°)	Azimuth (°)	Vertical Depth (usft)	+N/-S (usft)	+E/-W (usft)	Vertical Section (usft)	Dogleg Rate (°/100usft)	Build Rate (°/100usft)	Turn Rate (°/100usft)	
8,600.00	88.78	90.14	7,006.94	1,199.87	188.57	340.08	0.00	0.00	0.00	
8,700.00	88.78	90.14	7,009.07	1,199.63	288.54	439.21	0.00	0.00	0.00	
8,800.00	88.78	90.14	7,011.20	1,199.38	388.52	538.34	0.00	0.00	0.00	
8,900.00	88.78	90.14	7,013.33	1,199.14	488.50	637.46	0.00	0.00	0.00	
9,000.00	88.78	90.14	7,015.46	1,198.90	588.47	736.59	0.00	0.00	0.00	
9,100.00	88.78	90.14	7,017.59	1,198.65	688.45	835.72	0.00	0.00	0.00	
9,200.00	88.78	90.14	7,019.71	1,198.41	788.43	934.85	0.00	0.00	0.00	
9,300.00	88.78	90.14	7,021.84	1,198.17	888.40	1,033.98	0.00	0.00	0.00	
9,400.00	88.78	90.14	7,023.97	1,197.92	988.38	1,133.11	0.00	0.00	0.00	
9,500.00	88.78	90.14	7,026.10	1,197.68	1,088.36	1,232.24	0.00	0.00	0.00	
9,600.00	88.78	90.14	7,028.23	1,197.44	1,188.34	1,331.37	0.00	0.00	0.00	
9,700.00	88.78	90.14	7,030.36	1,197.19	1,288.31	1,430.50	0.00	0.00	0.00	
9,800.00	88.78	90.14	7,032.49	1,196.95	1,388.29	1,529.63	0.00	0.00	0.00	
9,900.00	88.78	90.14	7,034.62	1,196.70	1,488.27	1,628.76	0.00	0.00	0.00	
10,000.00	88.78	90.14	7,036.75	1,196.46	1,588.24	1,727.89	0.00	0.00	0.00	
10,100.00	88.78	90.14	7,038.88	1,196.22	1,688.22	1,827.02	0.00	0.00	0.00	
10,200.00	88.78	90.14	7,041.01	1,195.97	1,788.20	1,926.15	0.00	0.00	0.00	
10,300.00	88.78	90.14	7,043.14	1,195.73	1,888.17	2,025.27	0.00	0.00	0.00	
10,400.00	88.78	90.14	7,045.27	1,195.49	1,988.15	2,124.40	0.00	0.00	0.00	
10,500.00	88.78	90.14	7,047.39	1,195.24	2,088.13	2,223.53	0.00	0.00	0.00	
10,600.00	88.78	90.14	7,049.52	1,195.00	2,188.11	2,322.66	0.00	0.00	0.00	
10,700.00	88.78	90.14	7,051.65	1,194.76	2,288.08	2,421.79	0.00	0.00	0.00	
10,800.00	88.78	90.14	7,053.78	1,194.51	2,388.06	2,520.92	0.00	0.00	0.00	
10,900.00	88.78	90.14	7,055.91	1,194.27	2,488.04	2,620.05	0.00	0.00	0.00	
11,000.00	88.78	90.14	7,058.04	1,194.03	2,588.01	2,719.18	0.00	0.00	0.00	
11,100.00	88.78	90.14	7,060.17	1,193.78	2,687.99	2,818.31	0.00	0.00	0.00	
11,200.00	88.78	90.14	7,062.30	1,193.54	2,787.97	2,917.44	0.00	0.00	0.00	
11,300.00	88.78	90.14	7,064.43	1,193.30	2,887.94	3,016.57	0.00	0.00	0.00	
11,400.00	88.78	90.14	7,066.56	1,193.05	2,987.92	3,115.70	0.00	0.00	0.00	
11,500.00	88.78	90.14	7,068.69	1,192.81	3,087.90	3,214.83	0.00	0.00	0.00	
11,600.00	88.78	90.14	7,070.82	1,192.57	3,187.88	3,313.96	0.00	0.00	0.00	
11,700.00	88.78	90.14	7,072.94	1,192.32	3,287.85	3,413.08	0.00	0.00	0.00	
11,800.00	88.78	90.14	7,075.07	1,192.08	3,387.83	3,512.21	0.00	0.00	0.00	
11,900.00	88.78	90.14	7,077.20	1,191.84	3,487.81	3,611.34	0.00	0.00	0.00	
12,000.00	88.78	90.14	7,079.33	1,191.59	3,587.78	3,710.47	0.00	0.00	0.00	
12,100.00	88.78	90.14	7,081.46	1,191.35	3,687.76	3,809.60	0.00	0.00	0.00	
12,200.00	88.78	90.14	7,083.59	1,191.11	3,787.74	3,908.73	0.00	0.00	0.00	
12,300.00	88.78	90.14	7,085.72	1,190.86	3,887.72	4,007.86	0.00	0.00	0.00	
12,400.00	88.78	90.14	7,087.85	1,190.62	3,987.69	4,106.99	0.00	0.00	0.00	
12,500.00	88.78	90.14	7,089.98	1,190.38	4,087.67	4,206.12	0.00	0.00	0.00	
12,600.00	88.78	90.14	7,092.11	1,190.13	4,187.65	4,305.25	0.00	0.00	0.00	
12,700.00	88.78	90.14	7,094.24	1,189.89	4,287.62	4,404.38	0.00	0.00	0.00	
12,800.00	88.78	90.14	7,096.37	1,189.65	4,387.60	4,503.51	0.00	0.00	0.00	
12,900.00	88.78	90.14	7,098.50	1,189.40	4,487.58	4,602.64	0.00	0.00	0.00	
13,000.00	88.78	90.14	7,100.62	1,189.16	4,587.55	4,701.77	0.00	0.00	0.00	
13,100.00	88.78	90.14	7,102.75	1,188.92	4,687.53	4,800.89	0.00	0.00	0.00	
13,200.00	88.78	90.14	7,104.88	1,188.67	4,787.51	4,900.02	0.00	0.00	0.00	
13,300.00	88.78	90.14	7,107.01	1,188.43	4,887.49	4,999.15	0.00	0.00	0.00	
13,400.00	88.78	90.14	7,109.14	1,188.19	4,987.46	5,098.28	0.00	0.00	0.00	
13,500.00	88.78	90.14	7,111.27	1,187.94	5,087.44	5,197.41	0.00	0.00	0.00	
13,600.00	88.78	90.14	7,113.40	1,187.70	5,187.42	5,296.54	0.00	0.00	0.00	
13,700.00	88.78	90.14	7,115.53	1,187.46	5,287.39	5,395.67	0.00	0.00	0.00	
13,800.00	88.78	90.14	7,117.66	1,187.21	5,387.37	5,494.80	0.00	0.00	0.00	
13,900.00	88.78	90.14	7,119.79	1,186.97	5,487.35	5,593.93	0.00	0.00	0.00	

Hewlett-Packard

Planning Report

Database:	EDM 5000.14 Single User Db	Local Co-ordinate Reference:	Well BOST FARM 26N-8B-L
Company:	SRC ENERGY	TVD Reference:	RKB = 20' @ 4901.00usft (PD 462)
Project:	WELD COUNTY (NAD83, TRUE NORTH)	MD Reference:	RKB = 20' @ 4901.00usft (PD 462)
Site:	5N-66W-07 BOST FARM 5-7 PAD	North Reference:	True
Well:	BOST FARM 26N-8B-L	Survey Calculation Method:	Minimum Curvature
Wellbore:	Wellbore #1		
Design:	Design #1		

Planned Survey										
Measured Depth (usft)	Inclination (°)	Azimuth (°)	Vertical Depth (usft)	+N/-S (usft)	+E/-W (usft)	Vertical Section (usft)	Dogleg Rate (°/100usft)	Build Rate (°/100usft)	Turn Rate (°/100usft)	
14,000.00	88.78	90.14	7,121.92	1,186.73	5,587.32	5,693.06	0.00	0.00	0.00	
14,100.00	88.78	90.14	7,124.05	1,186.48	5,687.30	5,792.19	0.00	0.00	0.00	
14,200.00	88.78	90.14	7,126.17	1,186.24	5,787.28	5,891.32	0.00	0.00	0.00	
14,300.00	88.78	90.14	7,128.30	1,185.99	5,887.26	5,990.45	0.00	0.00	0.00	
14,400.00	88.78	90.14	7,130.43	1,185.75	5,987.23	6,089.58	0.00	0.00	0.00	
14,500.00	88.78	90.14	7,132.56	1,185.51	6,087.21	6,188.71	0.00	0.00	0.00	
14,600.00	88.78	90.14	7,134.69	1,185.26	6,187.19	6,287.83	0.00	0.00	0.00	
14,700.00	88.78	90.14	7,136.82	1,185.02	6,287.16	6,386.96	0.00	0.00	0.00	
14,800.00	88.78	90.14	7,138.95	1,184.78	6,387.14	6,486.09	0.00	0.00	0.00	
14,900.00	88.78	90.14	7,141.08	1,184.53	6,487.12	6,585.22	0.00	0.00	0.00	
15,000.00	88.78	90.14	7,143.21	1,184.29	6,587.10	6,684.35	0.00	0.00	0.00	
15,100.00	88.78	90.14	7,145.34	1,184.05	6,687.07	6,783.48	0.00	0.00	0.00	
15,200.00	88.78	90.14	7,147.47	1,183.80	6,787.05	6,882.61	0.00	0.00	0.00	
15,300.00	88.78	90.14	7,149.60	1,183.56	6,887.03	6,981.74	0.00	0.00	0.00	
15,400.00	88.78	90.14	7,151.73	1,183.32	6,987.00	7,080.87	0.00	0.00	0.00	
15,500.00	88.78	90.14	7,153.85	1,183.07	7,086.98	7,180.00	0.00	0.00	0.00	
15,600.00	88.78	90.14	7,155.98	1,182.83	7,186.96	7,279.13	0.00	0.00	0.00	
15,700.00	88.78	90.14	7,158.11	1,182.59	7,286.93	7,378.26	0.00	0.00	0.00	
15,800.00	88.78	90.14	7,160.24	1,182.34	7,386.91	7,477.39	0.00	0.00	0.00	
15,900.00	88.78	90.14	7,162.37	1,182.10	7,486.89	7,576.52	0.00	0.00	0.00	
16,000.00	88.78	90.14	7,164.50	1,181.86	7,586.87	7,675.64	0.00	0.00	0.00	
16,100.00	88.78	90.14	7,166.63	1,181.61	7,686.84	7,774.77	0.00	0.00	0.00	
16,200.00	88.78	90.14	7,168.76	1,181.37	7,786.82	7,873.90	0.00	0.00	0.00	
16,300.00	88.78	90.14	7,170.89	1,181.13	7,886.80	7,973.03	0.00	0.00	0.00	
16,400.00	88.78	90.14	7,173.02	1,180.88	7,986.77	8,072.16	0.00	0.00	0.00	
16,500.00	88.78	90.14	7,175.15	1,180.64	8,086.75	8,171.29	0.00	0.00	0.00	
16,600.00	88.78	90.14	7,177.28	1,180.40	8,186.73	8,270.42	0.00	0.00	0.00	
16,700.00	88.78	90.14	7,179.40	1,180.15	8,286.70	8,369.55	0.00	0.00	0.00	
16,800.00	88.78	90.14	7,181.53	1,179.91	8,386.68	8,468.68	0.00	0.00	0.00	
16,900.00	88.78	90.14	7,183.66	1,179.67	8,486.66	8,567.81	0.00	0.00	0.00	
17,000.00	88.78	90.14	7,185.79	1,179.42	8,586.64	8,666.94	0.00	0.00	0.00	
17,100.00	88.78	90.14	7,187.92	1,179.18	8,686.61	8,766.07	0.00	0.00	0.00	
17,200.00	88.78	90.14	7,190.05	1,178.94	8,786.59	8,865.20	0.00	0.00	0.00	
17,300.00	88.78	90.14	7,192.18	1,178.69	8,886.57	8,964.33	0.00	0.00	0.00	
17,400.00	88.78	90.14	7,194.31	1,178.45	8,986.54	9,063.45	0.00	0.00	0.00	
17,500.00	88.78	90.14	7,196.44	1,178.21	9,086.52	9,162.58	0.00	0.00	0.00	
17,573.34	88.78	90.14	7,198.00	1,178.03	9,159.85	9,235.29	0.00	0.00	0.00	
TD Well @ 17573.34ft										

Casing Points					
Measured Depth (usft)	Vertical Depth (usft)	Name		Casing Diameter (")	Hole Diameter (")
1,795.08	1,750.00	9 5/8"		9-5/8	13-1/2
7,616.58	6,986.00	5 1/2"		5-1/2	8-1/2

Hewlett-Packard

Planning Report

Database:	EDM 5000.14 Single User Db	Local Co-ordinate Reference:	Well BOST FARM 26N-8B-L
Company:	SRC ENERGY	TVD Reference:	RKB = 20' @ 4901.00usft (PD 462)
Project:	WELD COUNTY (NAD83, TRUE NORTH)	MD Reference:	RKB = 20' @ 4901.00usft (PD 462)
Site:	5N-66W-07 BOST FARM 5-7 PAD	North Reference:	True
Well:	BOST FARM 26N-8B-L	Survey Calculation Method:	Minimum Curvature
Wellbore:	Wellbore #1		
Design:	Design #1		

Plan Annotations				
Measured Depth (usft)	Vertical Depth (usft)	Local Coordinates		Comment
		+N/-S (usft)	+E/-W (usft)	
250.00	250.00	0.00	0.00	Begin Nudge @ 250.00ft
1,132.50	1,118.61	81.35	-107.56	End Nudge @ 1132.50ft
6,474.11	6,208.77	1,058.29	-1,399.31	KOP @ 6474.11ft :: DLS = 9°/100'
7,616.58	6,986.00	1,202.26	-794.63	End Build @ 7616.58ft
17,573.34	7,198.00	1,178.03	9,159.85	TD Well @ 17573.34ft