

# **SRC ENERGY**

**WELD COUNTY (NAD83, TRUE NORTH)**

**5N-66W-07 BOST FARM 5-7 PAD**

**BOST FARM 26C-8-L**

**Wellbore #1**

**Plan: Design #1**

## **Standard Planning Report**

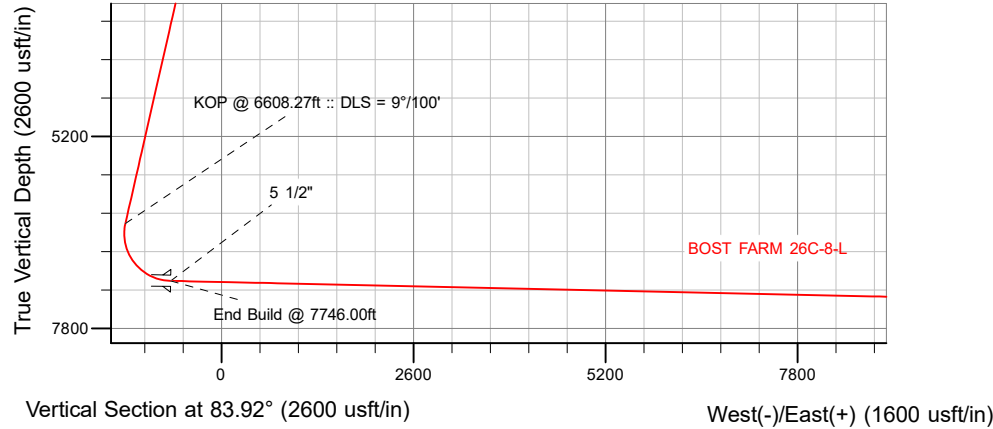
**28 December, 2017**

Project: WELD COUNTY (NAD83, TRUE NORTH)  
 Site: 5N-66W-07 BOST FARM 5-7 PAD  
 Well: BOST FARM 26C-8-L  
 Wellbore: Wellbore #1  
 Design: Design #1

# SRC ENERGY

## CASING DETAILS

TVD	MD	Name	Size
1750.00	1789.35	9 5/8"	9-5/8
7158.00	7746.00	5 1/2"	5-1/2



## SECTION DETAILS

Sec	MD	Inc	Azi	TVD	+N-S	+E-W	Dleg	TFace	V Sect	Target
1	0.00	0.00	0.00	0.00	0.00	0.00	0.00	0.00	0.00	
2	250.00	0.00	0.00	250.00	0.00	0.00	0.00	0.00	0.00	
3	1055.00	16.10	301.80	1044.45	59.21	-95.49	2.00	301.80	-88.69	
4	6608.27	16.10	301.80	6379.91	870.72	-1404.33	0.00	0.00	-1304.25	
5	7746.00	88.74	90.06	7158.00	985.61	-799.39	9.00	147.42	-690.55	
6	17709.40	88.74	90.06	7377.00	975.47	9161.60	0.00	0.00	9213.38	BOST FARM 26C-8-L_BHL

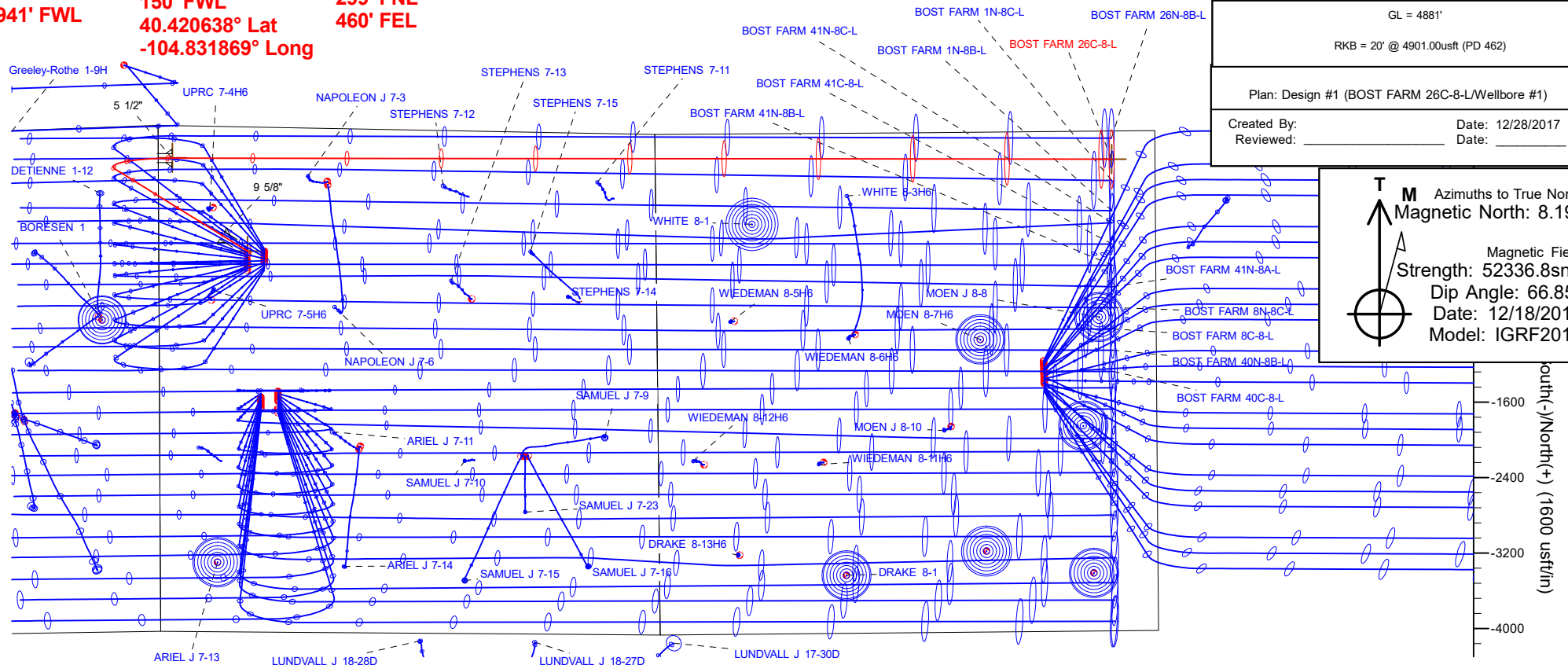
## WELLBORE TARGET DETAILS (LAT/LONG)

Name	TVD	+N-S	+E-W	Latitude	Longitude
BOST FARM 26C-8-L_SHL	0.00	0.00	0.00	40.417921	-104.829009
BOST FARM 26C-8-L_BHL	7377.00	975.47	9161.60	40.420594	-104.796104

**SHL**  
1317' FNL  
941' FWL

**LP**  
342' FNL  
150' FWL  
40.420638° Lat  
-104.831869° Long

**BHL**  
299' FNL  
460' FEL



## WELL DETAILS: BOST FARM 26C-8-L

GL = 4881'

RKB = 20' @ 4901.00usft (PD 462)

Plan: Design #1 (BOST FARM 26C-8-L/Wellbore #1)

Created By: \_\_\_\_\_ Date: 12/28/2017  
 Reviewed: \_\_\_\_\_ Date: \_\_\_\_\_

**T** Azimuths to True North  
**M** Magnetic North: 8.19°

Magnetic Field  
 Strength: 52336.8snT  
 Dip Angle: 66.85°  
 Date: 12/18/2017  
 Model: IGRF2015

North(-)/South(+) (1600 usft/in)

# Hewlett-Packard

## Planning Report

<b>Database:</b>	EDM 5000.14 Single User Db	<b>Local Co-ordinate Reference:</b>	Well BOST FARM 26C-8-L
<b>Company:</b>	SRC ENERGY	<b>TVD Reference:</b>	RKB = 20' @ 4901.00usft (PD 462)
<b>Project:</b>	WELD COUNTY (NAD83, TRUE NORTH)	<b>MD Reference:</b>	RKB = 20' @ 4901.00usft (PD 462)
<b>Site:</b>	5N-66W-07 BOST FARM 5-7 PAD	<b>North Reference:</b>	True
<b>Well:</b>	BOST FARM 26C-8-L	<b>Survey Calculation Method:</b>	Minimum Curvature
<b>Wellbore:</b>	Wellbore #1		
<b>Design:</b>	Design #1		

<b>Project</b>	WELD COUNTY (NAD83, TRUE NORTH)		
<b>Map System:</b>	US State Plane 1983	<b>System Datum:</b>	Mean Sea Level
<b>Geo Datum:</b>	North American Datum 1983		
<b>Map Zone:</b>	Colorado Northern Zone		

<b>Site</b>	5N-66W-07 BOST FARM 5-7 PAD				
<b>Site Position:</b>		<b>Northing:</b>	1,395,815.76 usft	<b>Latitude:</b>	40.417972
<b>From:</b>	Lat/Long	<b>Easting:</b>	3,187,006.76 usft	<b>Longitude:</b>	-104.828362
<b>Position Uncertainty:</b>	0.00 usft	<b>Slot Radius:</b>	13-3/16 "	<b>Grid Convergence:</b>	0.43 °

<b>Well</b>	BOST FARM 26C-8-L					
<b>Well Position</b>	<b>+N/-S</b>	-18.58 usft	<b>Northing:</b>	1,395,795.82 usft	<b>Latitude:</b>	40.417921
	<b>+E/-W</b>	-180.15 usft	<b>Easting:</b>	3,186,826.76 usft	<b>Longitude:</b>	-104.829009
<b>Position Uncertainty</b>		3.28 usft	<b>Wellhead Elevation:</b>		<b>Ground Level:</b>	4,881.00 usft

<b>Wellbore</b>	Wellbore #1				
<b>Magnetics</b>	<b>Model Name</b>	<b>Sample Date</b>	<b>Declination (°)</b>	<b>Dip Angle (°)</b>	<b>Field Strength (nT)</b>
	IGRF2015	12/18/2017	8.19	66.85	52,336.84421277

<b>Design</b>	Design #1				
<b>Audit Notes:</b>					
<b>Version:</b>	<b>Phase:</b>	PLAN	<b>Tie On Depth:</b>	0.00	
<b>Vertical Section:</b>	<b>Depth From (TVD) (usft)</b>	<b>+N/-S (usft)</b>	<b>+E/-W (usft)</b>	<b>Direction (°)</b>	
	0.00	0.00	0.00	83.92	

<b>Plan Survey Tool Program</b>	<b>Date</b>	12/28/2017			
<b>Depth From (usft)</b>	<b>Depth To (usft)</b>	<b>Survey (Wellbore)</b>	<b>Tool Name</b>	<b>Remarks</b>	
1	0.00	1,750.00	Design #1 (Wellbore #1)	SRC Energy_ISCWSA REV 2 Fixed:v2:crustal field declinatio	
2	1,750.00	17,709.40	Design #1 (Wellbore #1)	SRC Energy_ISCWSA REV 2 Fixed:v2:crustal field declinatio	

<b>Plan Sections</b>										
<b>Measured Depth (usft)</b>	<b>Inclination (°)</b>	<b>Azimuth (°)</b>	<b>Vertical Depth (usft)</b>	<b>+N/-S (usft)</b>	<b>+E/-W (usft)</b>	<b>Dogleg Rate (°/100usft)</b>	<b>Build Rate (°/100usft)</b>	<b>Turn Rate (°/100usft)</b>	<b>TFO (°)</b>	<b>Target</b>
0.00	0.00	0.00	0.00	0.00	0.00	0.00	0.00	0.00	0.00	
250.00	0.00	0.00	250.00	0.00	0.00	0.00	0.00	0.00	0.00	
1,055.00	16.10	301.80	1,044.45	59.21	-95.49	2.00	2.00	0.00	301.80	
6,608.27	16.10	301.80	6,379.91	870.72	-1,404.33	0.00	0.00	0.00	0.00	
7,746.00	88.74	90.06	7,158.00	985.61	-799.39	9.00	6.38	13.03	147.42	
17,709.40	88.74	90.06	7,377.00	975.47	9,161.60	0.00	0.00	0.00	0.00	BOST FARM 26C-8-L

# Hewlett-Packard

## Planning Report

<b>Database:</b>	EDM 5000.14 Single User Db	<b>Local Co-ordinate Reference:</b>	Well BOST FARM 26C-8-L
<b>Company:</b>	SRC ENERGY	<b>TVD Reference:</b>	RKB = 20' @ 4901.00usft (PD 462)
<b>Project:</b>	WELD COUNTY (NAD83, TRUE NORTH)	<b>MD Reference:</b>	RKB = 20' @ 4901.00usft (PD 462)
<b>Site:</b>	5N-66W-07 BOST FARM 5-7 PAD	<b>North Reference:</b>	True
<b>Well:</b>	BOST FARM 26C-8-L	<b>Survey Calculation Method:</b>	Minimum Curvature
<b>Wellbore:</b>	Wellbore #1		
<b>Design:</b>	Design #1		

Planned Survey									
Measured Depth (usft)	Inclination (°)	Azimuth (°)	Vertical Depth (usft)	+N/-S (usft)	+E/-W (usft)	Vertical Section (usft)	Dogleg Rate (°/100usft)	Build Rate (°/100usft)	Turn Rate (°/100usft)
0.00	0.00	0.00	0.00	0.00	0.00	0.00	0.00	0.00	0.00
100.00	0.00	0.00	100.00	0.00	0.00	0.00	0.00	0.00	0.00
200.00	0.00	0.00	200.00	0.00	0.00	0.00	0.00	0.00	0.00
250.00	0.00	0.00	250.00	0.00	0.00	0.00	0.00	0.00	0.00
<b>Begin Nudge @ 250.00ft</b>									
300.00	1.00	301.80	300.00	0.23	-0.37	-0.34	2.00	2.00	0.00
400.00	3.00	301.80	399.93	2.07	-3.34	-3.10	2.00	2.00	0.00
500.00	5.00	301.80	499.68	5.74	-9.27	-8.60	2.00	2.00	0.00
600.00	7.00	301.80	599.13	11.25	-18.15	-16.85	2.00	2.00	0.00
700.00	9.00	301.80	698.15	18.59	-29.98	-27.84	2.00	2.00	0.00
800.00	11.00	301.80	796.63	27.74	-44.73	-41.55	2.00	2.00	0.00
900.00	13.00	301.80	894.44	38.69	-62.40	-57.96	2.00	2.00	0.00
1,000.00	15.00	301.80	991.46	51.44	-82.96	-77.05	2.00	2.00	0.00
1,055.00	16.10	301.80	1,044.45	59.21	-95.49	-88.69	2.00	2.00	0.00
<b>End Nudge @ 1055.00ft</b>									
1,100.00	16.10	301.80	1,087.68	65.78	-106.10	-98.54	0.00	0.00	0.00
1,200.00	16.10	301.80	1,183.76	80.40	-129.67	-120.43	0.00	0.00	0.00
1,300.00	16.10	301.80	1,279.84	95.01	-153.24	-142.32	0.00	0.00	0.00
1,400.00	16.10	301.80	1,375.92	109.62	-176.81	-164.21	0.00	0.00	0.00
1,500.00	16.10	301.80	1,471.99	124.24	-200.37	-186.09	0.00	0.00	0.00
1,600.00	16.10	301.80	1,568.07	138.85	-223.94	-207.98	0.00	0.00	0.00
1,700.00	16.10	301.80	1,664.15	153.46	-247.51	-229.87	0.00	0.00	0.00
1,789.35	16.10	301.80	1,750.00	166.52	-268.57	-249.43	0.00	0.00	0.00
<b>9 5/8"</b>									
1,800.00	16.10	301.80	1,760.23	168.08	-271.08	-251.76	0.00	0.00	0.00
1,900.00	16.10	301.80	1,856.31	182.69	-294.65	-273.65	0.00	0.00	0.00
2,000.00	16.10	301.80	1,952.38	197.30	-318.22	-295.54	0.00	0.00	0.00
2,100.00	16.10	301.80	2,048.46	211.92	-341.79	-317.43	0.00	0.00	0.00
2,200.00	16.10	301.80	2,144.54	226.53	-365.36	-339.32	0.00	0.00	0.00
2,300.00	16.10	301.80	2,240.62	241.14	-388.92	-361.21	0.00	0.00	0.00
2,400.00	16.10	301.80	2,336.70	255.76	-412.49	-383.10	0.00	0.00	0.00
2,500.00	16.10	301.80	2,432.77	270.37	-436.06	-404.99	0.00	0.00	0.00
2,600.00	16.10	301.80	2,528.85	284.98	-459.63	-426.87	0.00	0.00	0.00
2,700.00	16.10	301.80	2,624.93	299.60	-483.20	-448.76	0.00	0.00	0.00
2,800.00	16.10	301.80	2,721.01	314.21	-506.77	-470.65	0.00	0.00	0.00
2,900.00	16.10	301.80	2,817.09	328.82	-530.34	-492.54	0.00	0.00	0.00
3,000.00	16.10	301.80	2,913.16	343.44	-553.91	-514.43	0.00	0.00	0.00
3,100.00	16.10	301.80	3,009.24	358.05	-577.47	-536.32	0.00	0.00	0.00
3,200.00	16.10	301.80	3,105.32	372.66	-601.04	-558.21	0.00	0.00	0.00
3,300.00	16.10	301.80	3,201.40	387.28	-624.61	-580.10	0.00	0.00	0.00
3,400.00	16.10	301.80	3,297.48	401.89	-648.18	-601.99	0.00	0.00	0.00
3,500.00	16.10	301.80	3,393.55	416.50	-671.75	-623.88	0.00	0.00	0.00
3,600.00	16.10	301.80	3,489.63	431.12	-695.32	-645.77	0.00	0.00	0.00
3,700.00	16.10	301.80	3,585.71	445.73	-718.89	-667.65	0.00	0.00	0.00
3,800.00	16.10	301.80	3,681.79	460.34	-742.46	-689.54	0.00	0.00	0.00
3,900.00	16.10	301.80	3,777.86	474.96	-766.02	-711.43	0.00	0.00	0.00
4,000.00	16.10	301.80	3,873.94	489.57	-789.59	-733.32	0.00	0.00	0.00
4,100.00	16.10	301.80	3,970.02	504.18	-813.16	-755.21	0.00	0.00	0.00
4,200.00	16.10	301.80	4,066.10	518.80	-836.73	-777.10	0.00	0.00	0.00
4,300.00	16.10	301.80	4,162.18	533.41	-860.30	-798.99	0.00	0.00	0.00
4,400.00	16.10	301.80	4,258.25	548.02	-883.87	-820.88	0.00	0.00	0.00
4,500.00	16.10	301.80	4,354.33	562.64	-907.44	-842.77	0.00	0.00	0.00
4,600.00	16.10	301.80	4,450.41	577.25	-931.01	-864.66	0.00	0.00	0.00

# Hewlett-Packard

## Planning Report

<b>Database:</b>	EDM 5000.14 Single User Db	<b>Local Co-ordinate Reference:</b>	Well BOST FARM 26C-8-L
<b>Company:</b>	SRC ENERGY	<b>TVD Reference:</b>	RKB = 20' @ 4901.00usft (PD 462)
<b>Project:</b>	WELD COUNTY (NAD83, TRUE NORTH)	<b>MD Reference:</b>	RKB = 20' @ 4901.00usft (PD 462)
<b>Site:</b>	5N-66W-07 BOST FARM 5-7 PAD	<b>North Reference:</b>	True
<b>Well:</b>	BOST FARM 26C-8-L	<b>Survey Calculation Method:</b>	Minimum Curvature
<b>Wellbore:</b>	Wellbore #1		
<b>Design:</b>	Design #1		

Planned Survey									
Measured Depth (usft)	Inclination (°)	Azimuth (°)	Vertical Depth (usft)	+N/-S (usft)	+E/-W (usft)	Vertical Section (usft)	Dogleg Rate (°/100usft)	Build Rate (°/100usft)	Turn Rate (°/100usft)
4,700.00	16.10	301.80	4,546.49	591.86	-954.58	-886.55	0.00	0.00	0.00
4,800.00	16.10	301.80	4,642.57	606.47	-978.14	-908.44	0.00	0.00	0.00
4,900.00	16.10	301.80	4,738.64	621.09	-1,001.71	-930.32	0.00	0.00	0.00
5,000.00	16.10	301.80	4,834.72	635.70	-1,025.28	-952.21	0.00	0.00	0.00
5,100.00	16.10	301.80	4,930.80	650.31	-1,048.85	-974.10	0.00	0.00	0.00
5,200.00	16.10	301.80	5,026.88	664.93	-1,072.42	-995.99	0.00	0.00	0.00
5,300.00	16.10	301.80	5,122.96	679.54	-1,095.99	-1,017.88	0.00	0.00	0.00
5,400.00	16.10	301.80	5,219.03	694.15	-1,119.56	-1,039.77	0.00	0.00	0.00
5,500.00	16.10	301.80	5,315.11	708.77	-1,143.13	-1,061.66	0.00	0.00	0.00
5,600.00	16.10	301.80	5,411.19	723.38	-1,166.69	-1,083.55	0.00	0.00	0.00
5,700.00	16.10	301.80	5,507.27	737.99	-1,190.26	-1,105.44	0.00	0.00	0.00
5,800.00	16.10	301.80	5,603.35	752.61	-1,213.83	-1,127.33	0.00	0.00	0.00
5,900.00	16.10	301.80	5,699.42	767.22	-1,237.40	-1,149.22	0.00	0.00	0.00
6,000.00	16.10	301.80	5,795.50	781.83	-1,260.97	-1,171.10	0.00	0.00	0.00
6,100.00	16.10	301.80	5,891.58	796.45	-1,284.54	-1,192.99	0.00	0.00	0.00
6,200.00	16.10	301.80	5,987.66	811.06	-1,308.11	-1,214.88	0.00	0.00	0.00
6,300.00	16.10	301.80	6,083.73	825.67	-1,331.68	-1,236.77	0.00	0.00	0.00
6,400.00	16.10	301.80	6,179.81	840.29	-1,355.24	-1,258.66	0.00	0.00	0.00
6,500.00	16.10	301.80	6,275.89	854.90	-1,378.81	-1,280.55	0.00	0.00	0.00
6,608.27	16.10	301.80	6,379.91	870.72	-1,404.33	-1,304.25	0.00	0.00	0.00
<b>KOP @ 6608.27ft :: DLS = 9°/100'</b>									
6,650.00	13.09	310.76	6,420.30	876.86	-1,412.83	-1,312.05	9.00	-7.22	21.47
6,700.00	10.14	327.85	6,469.28	884.29	-1,419.46	-1,317.86	9.00	-5.89	34.18
6,750.00	8.64	354.15	6,518.63	891.75	-1,422.19	-1,319.78	9.00	-3.01	52.61
6,800.00	9.30	23.02	6,568.05	899.21	-1,420.99	-1,317.80	9.00	1.33	57.73
6,850.00	11.78	43.82	6,617.22	906.61	-1,415.88	-1,311.93	9.00	4.95	41.61
6,900.00	15.20	56.47	6,665.84	913.92	-1,406.88	-1,302.21	9.00	6.85	25.30
6,950.00	19.07	64.34	6,713.62	921.08	-1,394.05	-1,288.69	9.00	7.73	15.73
7,000.00	23.16	69.57	6,760.26	928.05	-1,377.46	-1,271.46	9.00	8.18	10.47
7,050.00	27.37	73.29	6,805.47	934.79	-1,357.23	-1,250.63	9.00	8.43	7.43
7,100.00	31.66	76.07	6,848.97	941.26	-1,333.48	-1,226.33	9.00	8.57	5.57
7,150.00	35.99	78.25	6,890.50	947.41	-1,306.35	-1,198.70	9.00	8.67	4.35
7,200.00	40.36	80.01	6,929.80	953.22	-1,276.01	-1,167.91	9.00	8.73	3.53
7,250.00	44.75	81.48	6,966.63	958.63	-1,242.64	-1,134.16	9.00	8.78	2.95
7,300.00	49.15	82.74	7,000.75	963.63	-1,206.46	-1,097.65	9.00	8.81	2.52
7,350.00	53.57	83.85	7,031.97	968.18	-1,167.68	-1,058.61	9.00	8.83	2.21
7,400.00	57.99	84.83	7,060.08	972.24	-1,126.55	-1,017.28	9.00	8.85	1.97
7,450.00	62.43	85.72	7,084.92	975.81	-1,083.31	-973.91	9.00	8.87	1.79
7,500.00	66.86	86.55	7,106.32	978.85	-1,038.24	-928.77	9.00	8.88	1.65
7,550.00	71.31	87.32	7,124.17	981.34	-991.62	-882.14	9.00	8.88	1.54
7,600.00	75.75	88.05	7,138.34	983.27	-943.72	-834.31	9.00	8.89	1.46
7,650.00	80.20	88.75	7,148.75	984.63	-894.85	-785.57	9.00	8.89	1.41
7,700.00	84.65	89.44	7,155.35	985.41	-845.30	-736.22	9.00	8.90	1.37
7,746.00	88.74	90.06	7,158.00	985.61	-799.39	-690.54	9.00	8.90	1.35
<b>End Build @ 7746.00ft - 5 1/2"</b>									
7,800.00	88.74	90.06	7,159.18	985.56	-745.40	-636.87	0.00	0.00	0.00
7,900.00	88.74	90.06	7,161.38	985.46	-645.43	-537.46	0.00	0.00	0.00
8,000.00	88.74	90.06	7,163.58	985.36	-545.45	-438.06	0.00	0.00	0.00
8,100.00	88.74	90.06	7,165.78	985.25	-445.48	-338.66	0.00	0.00	0.00
8,200.00	88.74	90.06	7,167.98	985.15	-345.50	-239.25	0.00	0.00	0.00
8,300.00	88.74	90.06	7,170.18	985.05	-245.52	-139.85	0.00	0.00	0.00
8,400.00	88.74	90.06	7,172.37	984.95	-145.55	-40.45	0.00	0.00	0.00
8,500.00	88.74	90.06	7,174.57	984.85	-45.57	58.95	0.00	0.00	0.00
8,600.00	88.74	90.06	7,176.77	984.75	54.40	158.36	0.00	0.00	0.00

# Hewlett-Packard

## Planning Report

<b>Database:</b>	EDM 5000.14 Single User Db	<b>Local Co-ordinate Reference:</b>	Well BOST FARM 26C-8-L
<b>Company:</b>	SRC ENERGY	<b>TVD Reference:</b>	RKB = 20' @ 4901.00usft (PD 462)
<b>Project:</b>	WELD COUNTY (NAD83, TRUE NORTH)	<b>MD Reference:</b>	RKB = 20' @ 4901.00usft (PD 462)
<b>Site:</b>	5N-66W-07 BOST FARM 5-7 PAD	<b>North Reference:</b>	True
<b>Well:</b>	BOST FARM 26C-8-L	<b>Survey Calculation Method:</b>	Minimum Curvature
<b>Wellbore:</b>	Wellbore #1		
<b>Design:</b>	Design #1		

Planned Survey									
Measured Depth (usft)	Inclination (°)	Azimuth (°)	Vertical Depth (usft)	+N/-S (usft)	+E/-W (usft)	Vertical Section (usft)	Dogleg Rate (°/100usft)	Build Rate (°/100usft)	Turn Rate (°/100usft)
8,700.00	88.74	90.06	7,178.97	984.64	154.38	257.76	0.00	0.00	0.00
8,800.00	88.74	90.06	7,181.17	984.54	254.35	357.16	0.00	0.00	0.00
8,900.00	88.74	90.06	7,183.36	984.44	354.33	456.57	0.00	0.00	0.00
9,000.00	88.74	90.06	7,185.56	984.34	454.31	555.97	0.00	0.00	0.00
9,100.00	88.74	90.06	7,187.76	984.24	554.28	655.37	0.00	0.00	0.00
9,200.00	88.74	90.06	7,189.96	984.13	654.26	754.78	0.00	0.00	0.00
9,300.00	88.74	90.06	7,192.16	984.03	754.23	854.18	0.00	0.00	0.00
9,400.00	88.74	90.06	7,194.35	983.93	854.21	953.58	0.00	0.00	0.00
9,500.00	88.74	90.06	7,196.55	983.83	954.19	1,052.99	0.00	0.00	0.00
9,600.00	88.74	90.06	7,198.75	983.73	1,054.16	1,152.39	0.00	0.00	0.00
9,700.00	88.74	90.06	7,200.95	983.63	1,154.14	1,251.79	0.00	0.00	0.00
9,800.00	88.74	90.06	7,203.15	983.52	1,254.11	1,351.19	0.00	0.00	0.00
9,900.00	88.74	90.06	7,205.34	983.42	1,354.09	1,450.60	0.00	0.00	0.00
10,000.00	88.74	90.06	7,207.54	983.32	1,454.06	1,550.00	0.00	0.00	0.00
10,100.00	88.74	90.06	7,209.74	983.22	1,554.04	1,649.40	0.00	0.00	0.00
10,200.00	88.74	90.06	7,211.94	983.12	1,654.02	1,748.81	0.00	0.00	0.00
10,300.00	88.74	90.06	7,214.14	983.01	1,753.99	1,848.21	0.00	0.00	0.00
10,400.00	88.74	90.06	7,216.33	982.91	1,853.97	1,947.61	0.00	0.00	0.00
10,500.00	88.74	90.06	7,218.53	982.81	1,953.94	2,047.02	0.00	0.00	0.00
10,600.00	88.74	90.06	7,220.73	982.71	2,053.92	2,146.42	0.00	0.00	0.00
10,700.00	88.74	90.06	7,222.93	982.61	2,153.89	2,245.82	0.00	0.00	0.00
10,800.00	88.74	90.06	7,225.13	982.51	2,253.87	2,345.23	0.00	0.00	0.00
10,900.00	88.74	90.06	7,227.33	982.40	2,353.85	2,444.63	0.00	0.00	0.00
11,000.00	88.74	90.06	7,229.52	982.30	2,453.82	2,544.03	0.00	0.00	0.00
11,100.00	88.74	90.06	7,231.72	982.20	2,553.80	2,643.44	0.00	0.00	0.00
11,200.00	88.74	90.06	7,233.92	982.10	2,653.77	2,742.84	0.00	0.00	0.00
11,300.00	88.74	90.06	7,236.12	982.00	2,753.75	2,842.24	0.00	0.00	0.00
11,400.00	88.74	90.06	7,238.32	981.90	2,853.73	2,941.64	0.00	0.00	0.00
11,500.00	88.74	90.06	7,240.51	981.79	2,953.70	3,041.05	0.00	0.00	0.00
11,600.00	88.74	90.06	7,242.71	981.69	3,053.68	3,140.45	0.00	0.00	0.00
11,700.00	88.74	90.06	7,244.91	981.59	3,153.65	3,239.85	0.00	0.00	0.00
11,800.00	88.74	90.06	7,247.11	981.49	3,253.63	3,339.26	0.00	0.00	0.00
11,900.00	88.74	90.06	7,249.31	981.39	3,353.60	3,438.66	0.00	0.00	0.00
12,000.00	88.74	90.06	7,251.50	981.28	3,453.58	3,538.06	0.00	0.00	0.00
12,100.00	88.74	90.06	7,253.70	981.18	3,553.56	3,637.47	0.00	0.00	0.00
12,200.00	88.74	90.06	7,255.90	981.08	3,653.53	3,736.87	0.00	0.00	0.00
12,300.00	88.74	90.06	7,258.10	980.98	3,753.51	3,836.27	0.00	0.00	0.00
12,400.00	88.74	90.06	7,260.30	980.88	3,853.48	3,935.68	0.00	0.00	0.00
12,500.00	88.74	90.06	7,262.49	980.78	3,953.46	4,035.08	0.00	0.00	0.00
12,600.00	88.74	90.06	7,264.69	980.67	4,053.43	4,134.48	0.00	0.00	0.00
12,700.00	88.74	90.06	7,266.89	980.57	4,153.41	4,233.88	0.00	0.00	0.00
12,800.00	88.74	90.06	7,269.09	980.47	4,253.39	4,333.29	0.00	0.00	0.00
12,900.00	88.74	90.06	7,271.29	980.37	4,353.36	4,432.69	0.00	0.00	0.00
13,000.00	88.74	90.06	7,273.48	980.27	4,453.34	4,532.09	0.00	0.00	0.00
13,100.00	88.74	90.06	7,275.68	980.17	4,553.31	4,631.50	0.00	0.00	0.00
13,200.00	88.74	90.06	7,277.88	980.06	4,653.29	4,730.90	0.00	0.00	0.00
13,300.00	88.74	90.06	7,280.08	979.96	4,753.27	4,830.30	0.00	0.00	0.00
13,400.00	88.74	90.06	7,282.28	979.86	4,853.24	4,929.71	0.00	0.00	0.00
13,500.00	88.74	90.06	7,284.47	979.76	4,953.22	5,029.11	0.00	0.00	0.00
13,600.00	88.74	90.06	7,286.67	979.66	5,053.19	5,128.51	0.00	0.00	0.00
13,700.00	88.74	90.06	7,288.87	979.55	5,153.17	5,227.92	0.00	0.00	0.00
13,800.00	88.74	90.06	7,291.07	979.45	5,253.14	5,327.32	0.00	0.00	0.00
13,900.00	88.74	90.06	7,293.27	979.35	5,353.12	5,426.72	0.00	0.00	0.00
14,000.00	88.74	90.06	7,295.47	979.25	5,453.10	5,526.12	0.00	0.00	0.00

# Hewlett-Packard

## Planning Report

<b>Database:</b>	EDM 5000.14 Single User Db	<b>Local Co-ordinate Reference:</b>	Well BOST FARM 26C-8-L
<b>Company:</b>	SRC ENERGY	<b>TVD Reference:</b>	RKB = 20' @ 4901.00usft (PD 462)
<b>Project:</b>	WELD COUNTY (NAD83, TRUE NORTH)	<b>MD Reference:</b>	RKB = 20' @ 4901.00usft (PD 462)
<b>Site:</b>	5N-66W-07 BOST FARM 5-7 PAD	<b>North Reference:</b>	True
<b>Well:</b>	BOST FARM 26C-8-L	<b>Survey Calculation Method:</b>	Minimum Curvature
<b>Wellbore:</b>	Wellbore #1		
<b>Design:</b>	Design #1		

Planned Survey									
Measured Depth (usft)	Inclination (°)	Azimuth (°)	Vertical Depth (usft)	+N/-S (usft)	+E/-W (usft)	Vertical Section (usft)	Dogleg Rate (°/100usft)	Build Rate (°/100usft)	Turn Rate (°/100usft)
14,100.00	88.74	90.06	7,297.66	979.15	5,553.07	5,625.53	0.00	0.00	0.00
14,200.00	88.74	90.06	7,299.86	979.05	5,653.05	5,724.93	0.00	0.00	0.00
14,300.00	88.74	90.06	7,302.06	978.94	5,753.02	5,824.33	0.00	0.00	0.00
14,400.00	88.74	90.06	7,304.26	978.84	5,853.00	5,923.74	0.00	0.00	0.00
14,500.00	88.74	90.06	7,306.46	978.74	5,952.97	6,023.14	0.00	0.00	0.00
14,600.00	88.74	90.06	7,308.65	978.64	6,052.95	6,122.54	0.00	0.00	0.00
14,700.00	88.74	90.06	7,310.85	978.54	6,152.93	6,221.95	0.00	0.00	0.00
14,800.00	88.74	90.06	7,313.05	978.43	6,252.90	6,321.35	0.00	0.00	0.00
14,900.00	88.74	90.06	7,315.25	978.33	6,352.88	6,420.75	0.00	0.00	0.00
15,000.00	88.74	90.06	7,317.45	978.23	6,452.85	6,520.16	0.00	0.00	0.00
15,100.00	88.74	90.06	7,319.64	978.13	6,552.83	6,619.56	0.00	0.00	0.00
15,200.00	88.74	90.06	7,321.84	978.03	6,652.81	6,718.96	0.00	0.00	0.00
15,300.00	88.74	90.06	7,324.04	977.93	6,752.78	6,818.36	0.00	0.00	0.00
15,400.00	88.74	90.06	7,326.24	977.82	6,852.76	6,917.77	0.00	0.00	0.00
15,500.00	88.74	90.06	7,328.44	977.72	6,952.73	7,017.17	0.00	0.00	0.00
15,600.00	88.74	90.06	7,330.63	977.62	7,052.71	7,116.57	0.00	0.00	0.00
15,700.00	88.74	90.06	7,332.83	977.52	7,152.68	7,215.98	0.00	0.00	0.00
15,800.00	88.74	90.06	7,335.03	977.42	7,252.66	7,315.38	0.00	0.00	0.00
15,900.00	88.74	90.06	7,337.23	977.32	7,352.64	7,414.78	0.00	0.00	0.00
16,000.00	88.74	90.06	7,339.43	977.21	7,452.61	7,514.19	0.00	0.00	0.00
16,100.00	88.74	90.06	7,341.62	977.11	7,552.59	7,613.59	0.00	0.00	0.00
16,200.00	88.74	90.06	7,343.82	977.01	7,652.56	7,712.99	0.00	0.00	0.00
16,300.00	88.74	90.06	7,346.02	976.91	7,752.54	7,812.40	0.00	0.00	0.00
16,400.00	88.74	90.06	7,348.22	976.81	7,852.51	7,911.80	0.00	0.00	0.00
16,500.00	88.74	90.06	7,350.42	976.70	7,952.49	8,011.20	0.00	0.00	0.00
16,600.00	88.74	90.06	7,352.61	976.60	8,052.47	8,110.60	0.00	0.00	0.00
16,700.00	88.74	90.06	7,354.81	976.50	8,152.44	8,210.01	0.00	0.00	0.00
16,800.00	88.74	90.06	7,357.01	976.40	8,252.42	8,309.41	0.00	0.00	0.00
16,900.00	88.74	90.06	7,359.21	976.30	8,352.39	8,408.81	0.00	0.00	0.00
17,000.00	88.74	90.06	7,361.41	976.20	8,452.37	8,508.22	0.00	0.00	0.00
17,100.00	88.74	90.06	7,363.61	976.09	8,552.35	8,607.62	0.00	0.00	0.00
17,200.00	88.74	90.06	7,365.80	975.99	8,652.32	8,707.02	0.00	0.00	0.00
17,300.00	88.74	90.06	7,368.00	975.89	8,752.30	8,806.43	0.00	0.00	0.00
17,400.00	88.74	90.06	7,370.20	975.79	8,852.27	8,905.83	0.00	0.00	0.00
17,500.00	88.74	90.06	7,372.40	975.69	8,952.25	9,005.23	0.00	0.00	0.00
17,600.00	88.74	90.06	7,374.60	975.59	9,052.22	9,104.64	0.00	0.00	0.00
17,709.40	88.74	90.06	7,377.00	975.47	9,161.60	9,213.38	0.00	0.00	0.00
<b>TD Well @ 17709.40ft</b>									

Casing Points					
Measured Depth (usft)	Vertical Depth (usft)	Name	Casing Diameter (")	Hole Diameter (")	
1,789.35	1,750.00	9 5/8"	9-5/8	13-1/2	
7,746.00	7,158.00	5 1/2"	5-1/2	8-1/2	

# Hewlett-Packard

## Planning Report

<b>Database:</b>	EDM 5000.14 Single User Db	<b>Local Co-ordinate Reference:</b>	Well BOST FARM 26C-8-L
<b>Company:</b>	SRC ENERGY	<b>TVD Reference:</b>	RKB = 20' @ 4901.00usft (PD 462)
<b>Project:</b>	WELD COUNTY (NAD83, TRUE NORTH)	<b>MD Reference:</b>	RKB = 20' @ 4901.00usft (PD 462)
<b>Site:</b>	5N-66W-07 BOST FARM 5-7 PAD	<b>North Reference:</b>	True
<b>Well:</b>	BOST FARM 26C-8-L	<b>Survey Calculation Method:</b>	Minimum Curvature
<b>Wellbore:</b>	Wellbore #1		
<b>Design:</b>	Design #1		

Plan Annotations				
Measured Depth (usft)	Vertical Depth (usft)	Local Coordinates		Comment
		+N/-S (usft)	+E/-W (usft)	
250.00	250.00	0.00	0.00	Begin Nudge @ 250.00ft
1,055.00	1,044.45	59.21	-95.49	End Nudge @ 1055.00ft
6,608.27	6,379.91	870.72	-1,404.33	KOP @ 6608.27ft :: DLS = 9°/100'
7,746.00	7,158.00	985.61	-799.39	End Build @ 7746.00ft
17,709.40	7,377.00	975.47	9,161.60	TD Well @ 17709.40ft