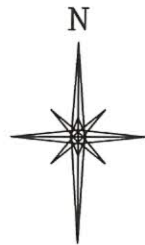


R. 93 W.



GRID NORTH
SCALE 1" = 1000'
500' 0 1000'

T. 9 S.

SUP & SHEP
0993-25-07W
UNGRADED ELEVATION:
8078.0'

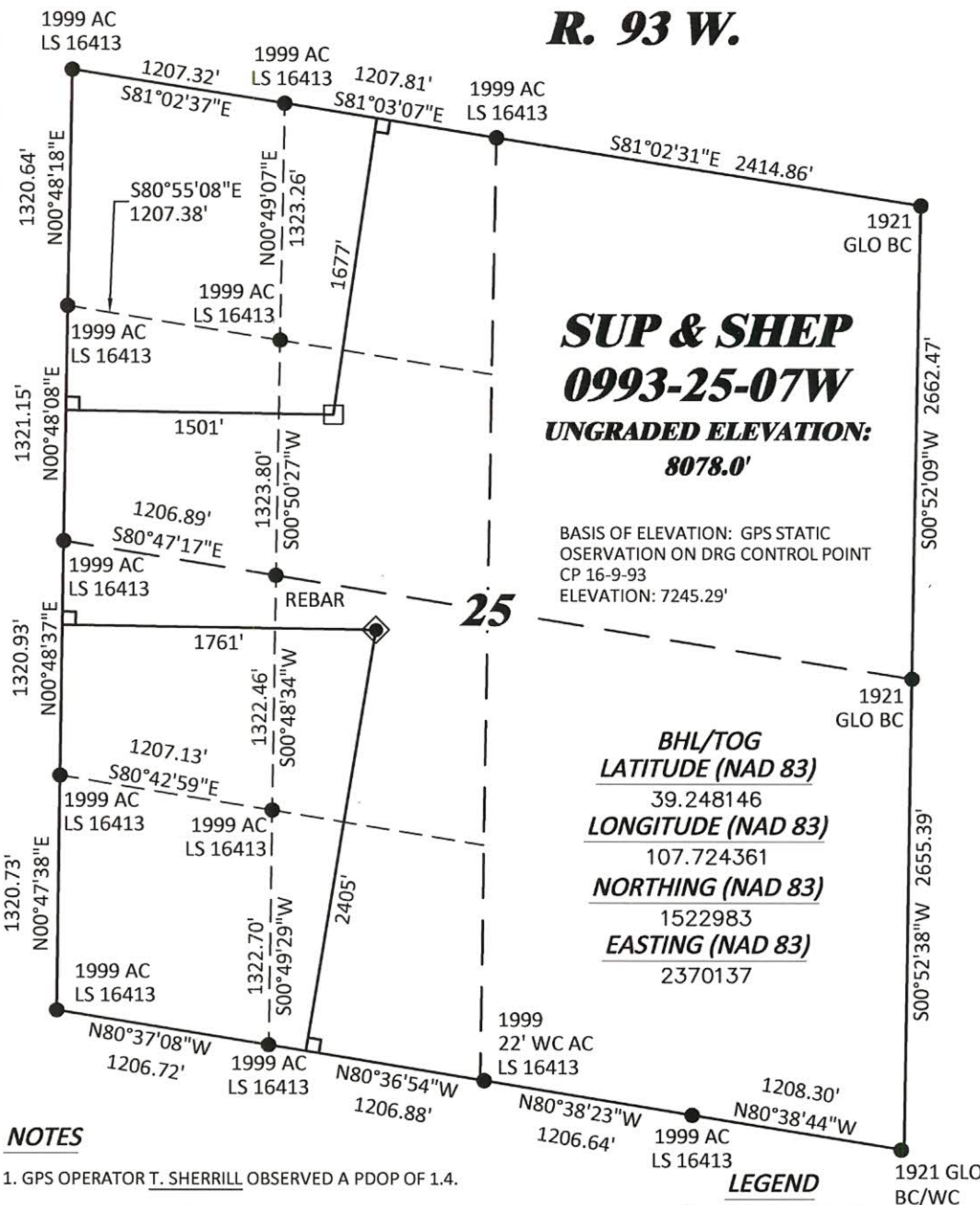
BASIS OF ELEVATION: GPS STATIC
OBSERVATION ON DRG CONTROL POINT
CP 16-9-93
ELEVATION: 7245.29'

SHL
LATITUDE (NAD 83)
NORTH 39.244836 DEG.
LONGITUDE (NAD 83)
WEST 107.723396 DEG.
NORTHING (NAD 83)
1521771.18
EASTING (NAD 83)
2370380.42

BHL/TOG
LATITUDE (NAD 83)
39.248146
LONGITUDE (NAD 83)
107.724361
NORTHING (NAD 83)
1522983
EASTING (NAD 83)
2370137

BASIS OF BEARING/DATUM
SPCS COLORADO CENTRAL NAD 27
BASED ON STATIC GPS OBSERVATIONS
ON DRG CONTROL POINT CP 16-9-93
HAVING A POSITION OF:
NAD83(2011)
LAT 39° 16' 16.64" NORTH
LONG 107° 46' 11.24" WEST
NAVD88 ELEVATION: 7245.29'

THE EAST LINE OF THE NE¼ OF SECTION
25, MONUMENTED BY GLO BC'S AND
BEARING S 00°52'09" W.



NOTES

1. GPS OPERATOR T. SHERRILL OBSERVED A PDOP OF 1.4.
2. ALL GPS OBSERVATIONS ARE IN COMPLIANCE WITH COGCC RULE No.215.
3. EXISTING IMPROVEMENTS WITHIN 500' OF LOCATION. SEE LOC. DRAWING.
4. SURROUNDING SURFACE USE IS NATIVE BRUSH, NON CROP RANGELAND.

SURVEYOR'S STATEMENT

I, DAVID E. HENDERHAN, AN EMPLOYEE AND AGENT ON BEHALF OF D.R. GRIFFIN & ASSOCIATES, INC. STATE THE PLAT HEREON IS A CORRECT REPRESENTATION OF A SURVEY MADE UNDER MY SUPERVISION ON THE 5th DAY OF MARCH, 2018 OF THE SHOWN SUP & SHEP 0993-25-07W AND THAT THE LOCATION HAS BEEN STAKED ON THE GROUND.

Notice: In accordance with Colorado State Law, any legal action based upon any defect in this survey plat must commence within three (3) years after first discovery of such defect. In no event, may any action based upon any defect in this survey plat be commenced more than ten (10) years from the date of certification shown hereon.

SUP & SHEP 25-11 PAD



DRG RIFFIN & ASSOCIATES, INC.
(307) 362-5028 1414 ELK ST., ROCK SPRINGS, WY 82901

PLAT OF DRILLING LOCATION IN
NESW, SECTION 25, FOR
LARAMIE ENERGY, LLC.

2405' F/SL, & 1761' F/WL, SECTION 25,
T. 9 S., R. 93 W., 6TH P.M.,
MESA COUNTY, COLORADO

DRAWN: 3/20/2018 - TCM

SCALE: 1" = 1000'

REVISED: N/A -

DRG JOB No. 21282

B7-25-07W