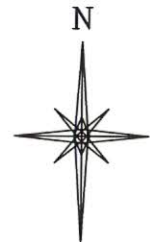


R. 93 W.



GRID NORTH
SCALE' 1" = 1000'
500' 0 1000'

T. 9 S.

HAYWARD
0993-25-16E
UNGRADED ELEVATION:
8009.5'

BASIS OF ELEVATION: GPS STATIC
OBSERVATION ON DRG CONTROL POINT
CP 16-9-93.
ELEVATION: 7245.29'

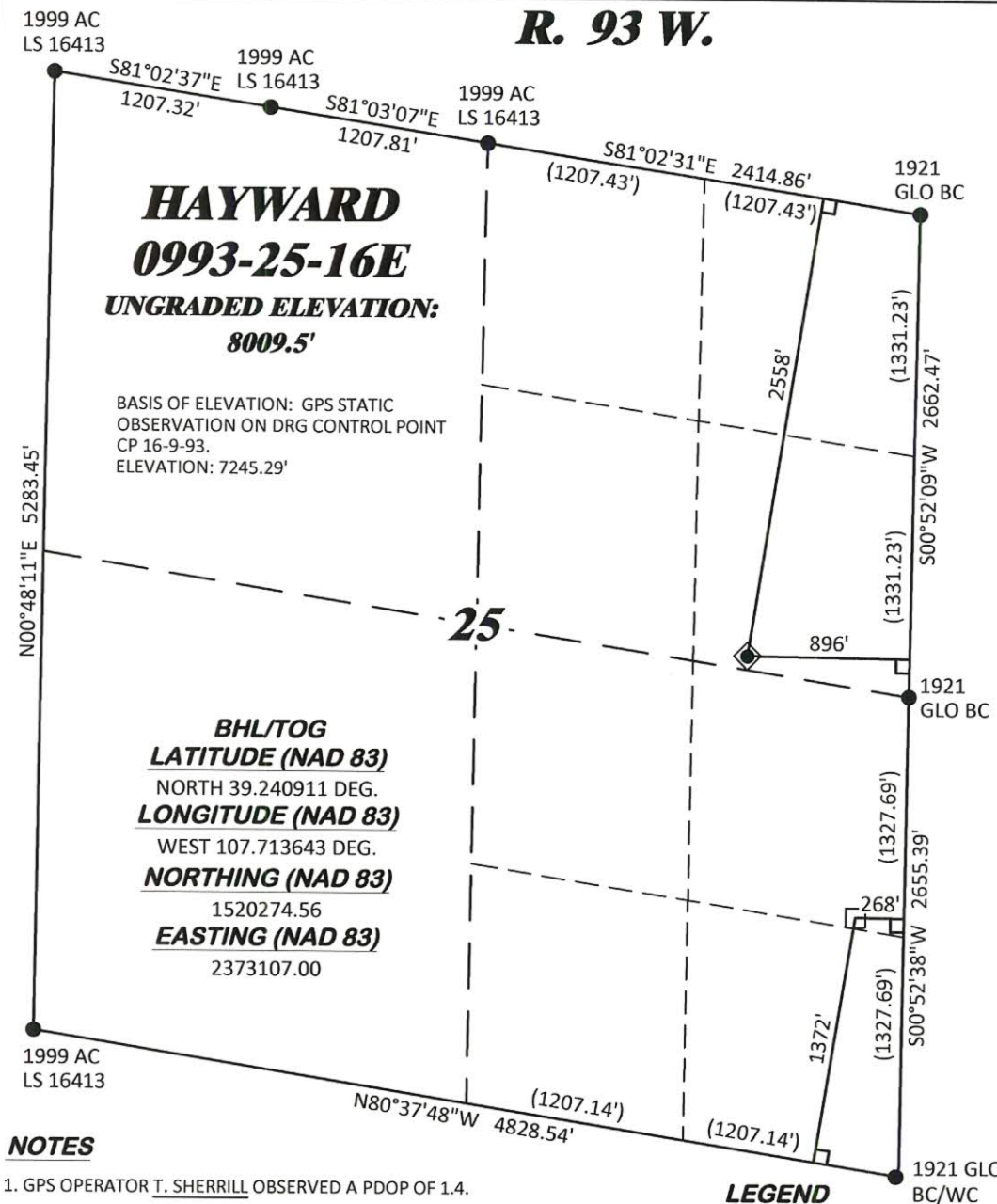
BHL/TOG
LATITUDE (NAD 83)
NORTH 39.240911 DEG.
LONGITUDE (NAD 83)
WEST 107.713643 DEG.
NORTHING (NAD 83)
1520274.56
EASTING (NAD 83)
2373107.00

SHL
LATITUDE (NAD 83)
NORTH 39.244833 DEG.
LONGITUDE (NAD 83)
WEST 107.715906 DEG.
NORTHING (NAD 83)
1521718.13
EASTING (NAD 83)
2372501.16

BASIS OF BEARING/DATUM

SPCS COLORADO CENTRAL NAD 27
BASED ON STATIC GPS OBSERVATIONS
ON DRG CONTROL POINT CP 16-9-93
HAVING A POSITION OF:
NAD83(2011)
LAT 39° 16' 16.64" NORTH
LONG 107° 46' 11.24" WEST
NAVD88 ELEVATION: 7245.29'

THE EAST LINE OF THE NE¼ OF SECTION
25, MONUMENTED BY BLM BC'S AND
BEARING S 00°52'09" W.



NOTES

1. GPS OPERATOR T. SHERRILL OBSERVED A PDOP OF 1.4.
2. ALL GPS OBSERVATIONS ARE IN COMPLIANCE WITH COGCC RULE No.215.
3. EXISTING IMPROVEMENTS WITHIN 500' OF LOCATION. SEE LOC. DRAWING.
4. SURROUNDING SURFACE USE IS NATIVE BRUSH, NON CROP RANGELAND.

LEGEND

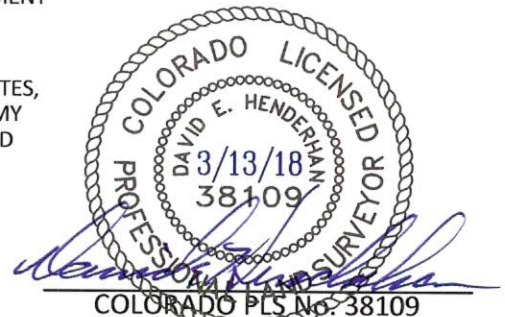
- ◆ WELL LOCATION
- APPROX. BHL
- └ DENOTES 90° TIE
- FOUND MONUMENT

SURVEYOR'S STATEMENT

I, DAVID E. HENDERHAN, AN EMPLOYEE AND AGENT ON BEHALF OF D.R. GRIFFIN & ASSOCIATES, INC. STATE THE PLAT HEREON IS A CORRECT REPRESENTATION OF A SURVEY MADE UNDER MY SUPERVISION ON THE 1st DAY OF MARCH, 2018 OF THE SHOWN HAYWARD 0993-25-16E AND THAT THE LOCATION HAS BEEN STAKED ON THE GROUND.

Notice: In accordance with Colorado State Law, any legal action based upon any defect in this survey plat must commence within three (3) years after first discovery of such defect. In no event, may any action based upon any defect in this survey plat be commenced more than ten (10) years from the date of certification shown hereon.

HAYWARD 0993-25-09



DRG RIFFIN & ASSOCIATES, INC. (307) 362-5028 1414 ELK ST., ROCK SPRINGS, WY 82901	
DRAWN: 3/8/2018 - TCM	SCALE: 1" = 1000'
REVISED: N/A -	DRG JOB No. 21279
	A6-25-16E

PLAT OF DRILLING LOCATION IN
SENE, SECTION 25, FOR
LARAMIE ENERGY, LLC
2558' F/NL, & 896' F/EL, SECTION 25,
T. 9 S., R. 93 W., 6TH P.M.,
MESA COUNTY, COLORADO