

# Construction and Stormwater Inspection

April 25, 2018

Operator: CRESTONE PEAK RESOURCES OPERATING LLC - #10633

Location ID: 428577

Inspection Document #: 682403506

Weld County, CO

SWSW Section 4 T1N R65W

Chris Binschus  
Reclamation Specialist, COGCC



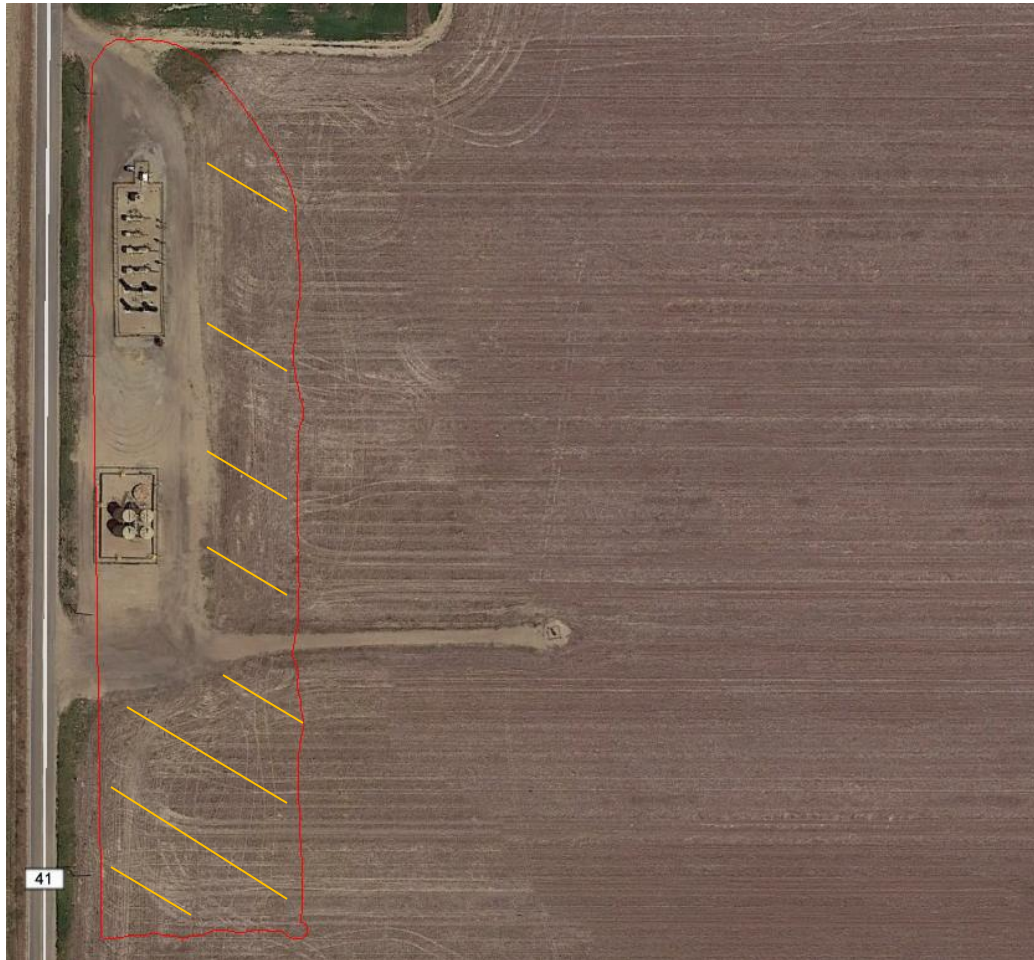
**COLORADO**  
Oil & Gas Conservation  
Commission

Department of Natural Resources

## Inspection Photos

Location Name: Ruegge Facility /4H-N165

Location ID: 428577

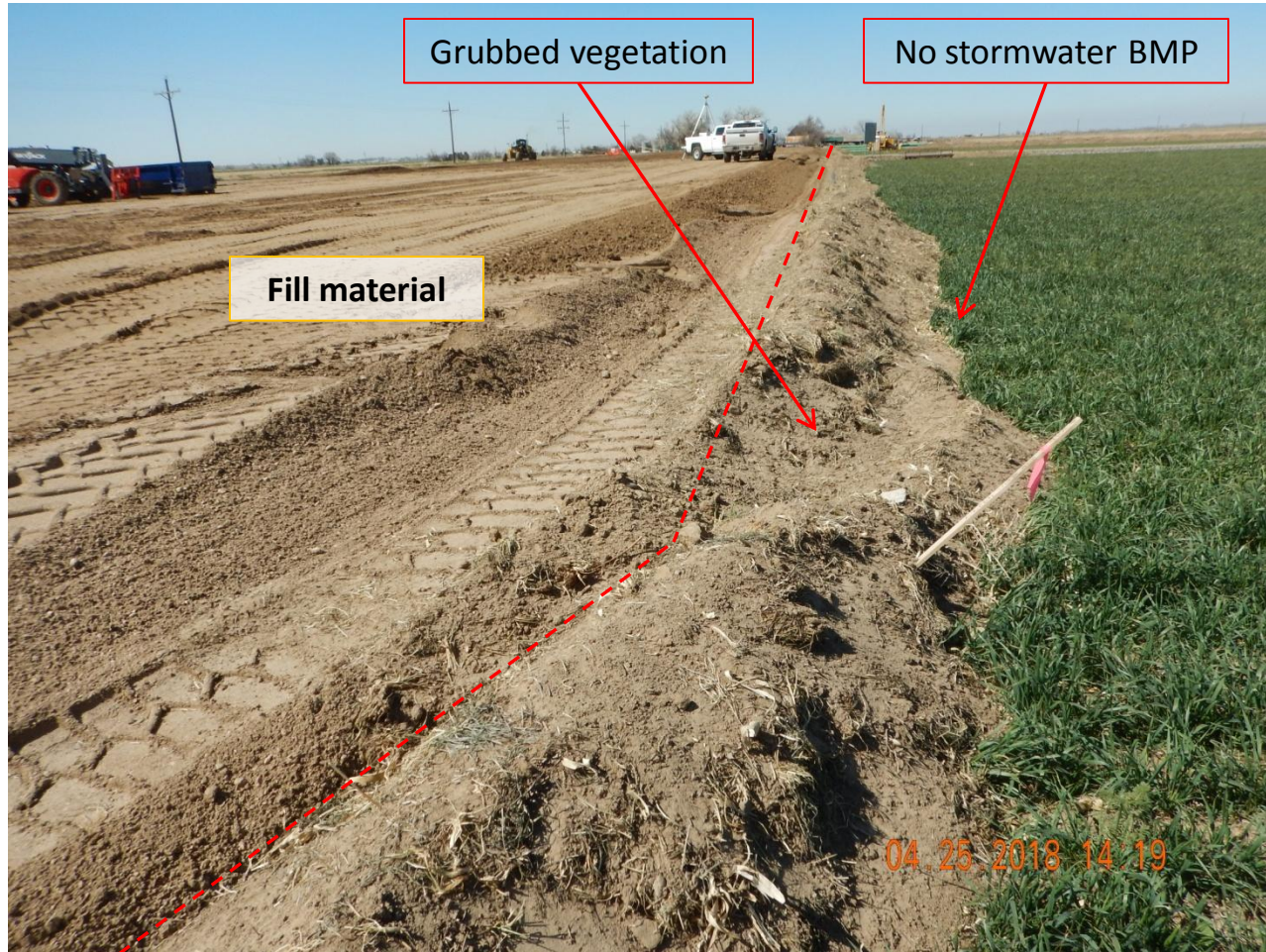


Google Earth aerial imagery taken June 9, 2017. Photo illustrates the former Stelling battery location during active operations. On April 25, 2018, an initial disturbance area (red line) along the perimeter of the new facility location of 3.28 acres was mapped using a Trimble Juno 3B handheld device. The former Stelling battery location was expanded approximately 2.0 acres (orange lines). Operator failed to salvage topsoil and install stormwater BMPs during construction operations.



**Photo 1.** Photo taken from the southwest perimeter of the location, facing East. Operator failed to install stormwater BMPs during construction operations.

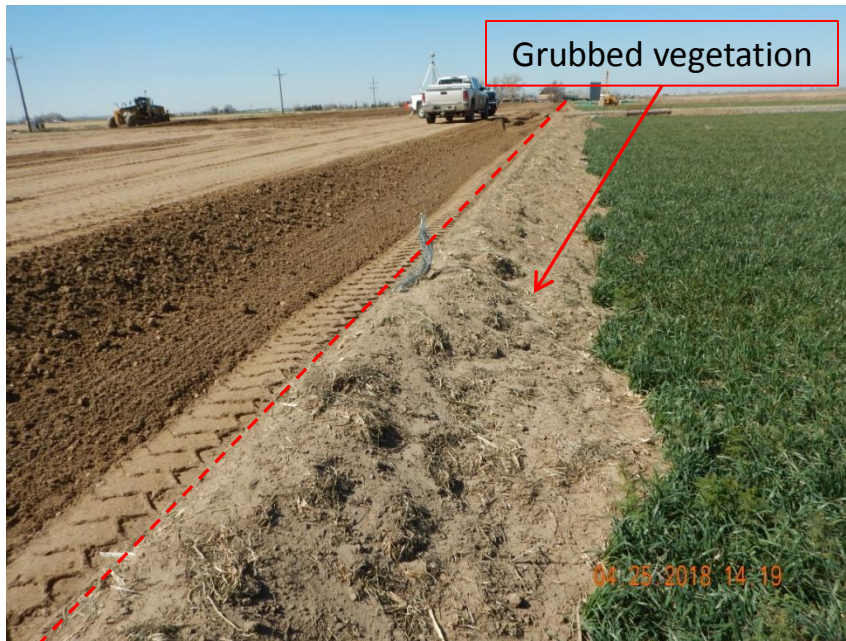




**Photo 2.** Photo taken from the southeast perimeter of the location, facing North. Operator failed to salvage topsoil per Rule 1002; Operator only grubbed off vegetation from the surface and then imported fill material to the location. Operator failed to install stormwater BMPs during construction operations.



Inspection Photos  
Location Name: Ruegge Facility /4H-N165  
Location ID: 428577

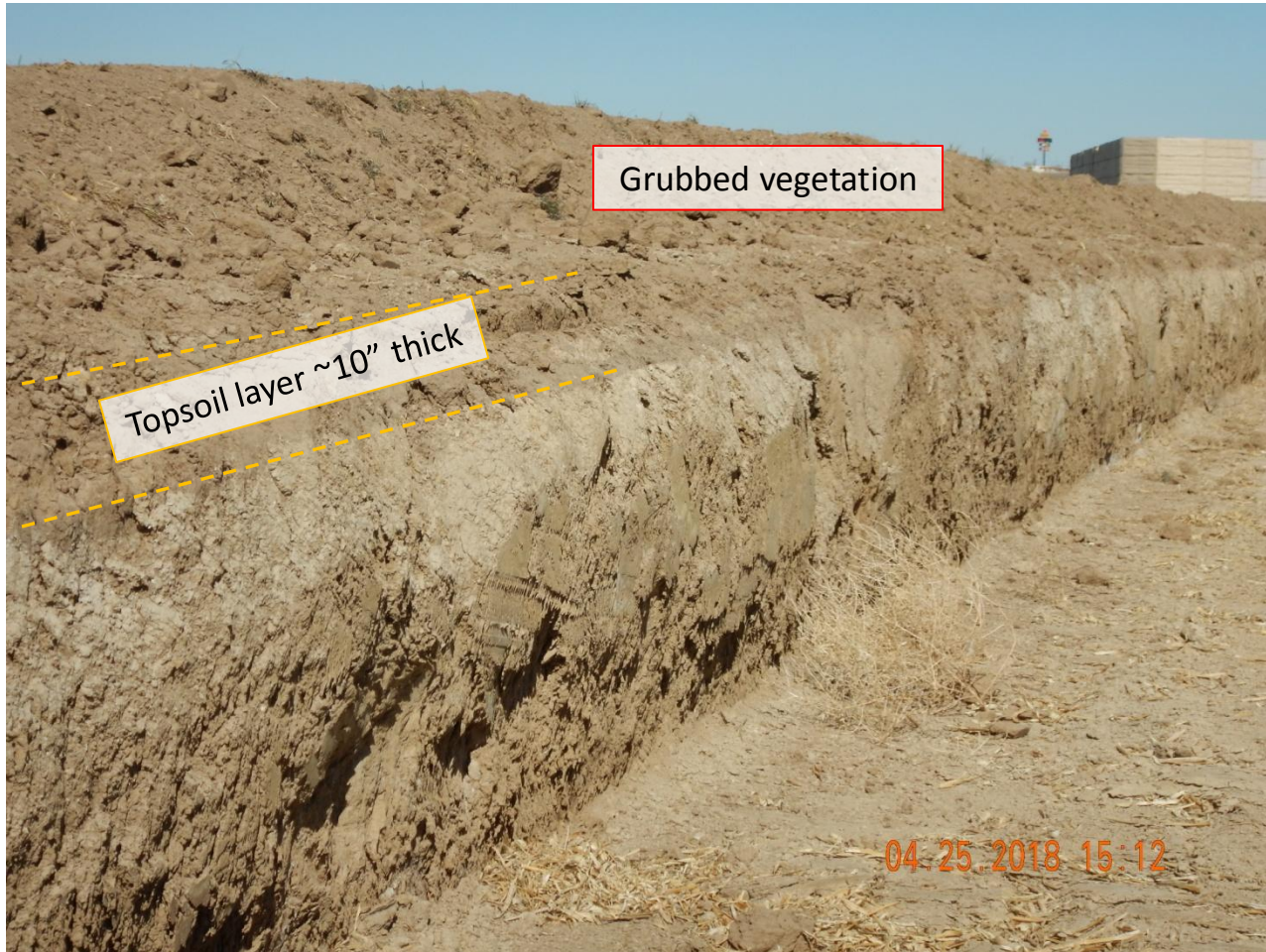


**Photo 3.** Photo taken from the eastern perimeter of the location, facing North. See comments under Photo 1 and 2.



**Photo 4.** Photo taken from the northeast perimeter of the location, facing North. See comments under Photo 1 and 2.





**Photo 5.** Photo taken from the western flowline area, facing East. Operator failed to install stormwater BMPs during construction operations and Operator failed to salvage topsoil per Rule 1002; Operator only grubbed off vegetation from the surface. Based on field measurements, the topsoil layer is approximately 10 inches thick.