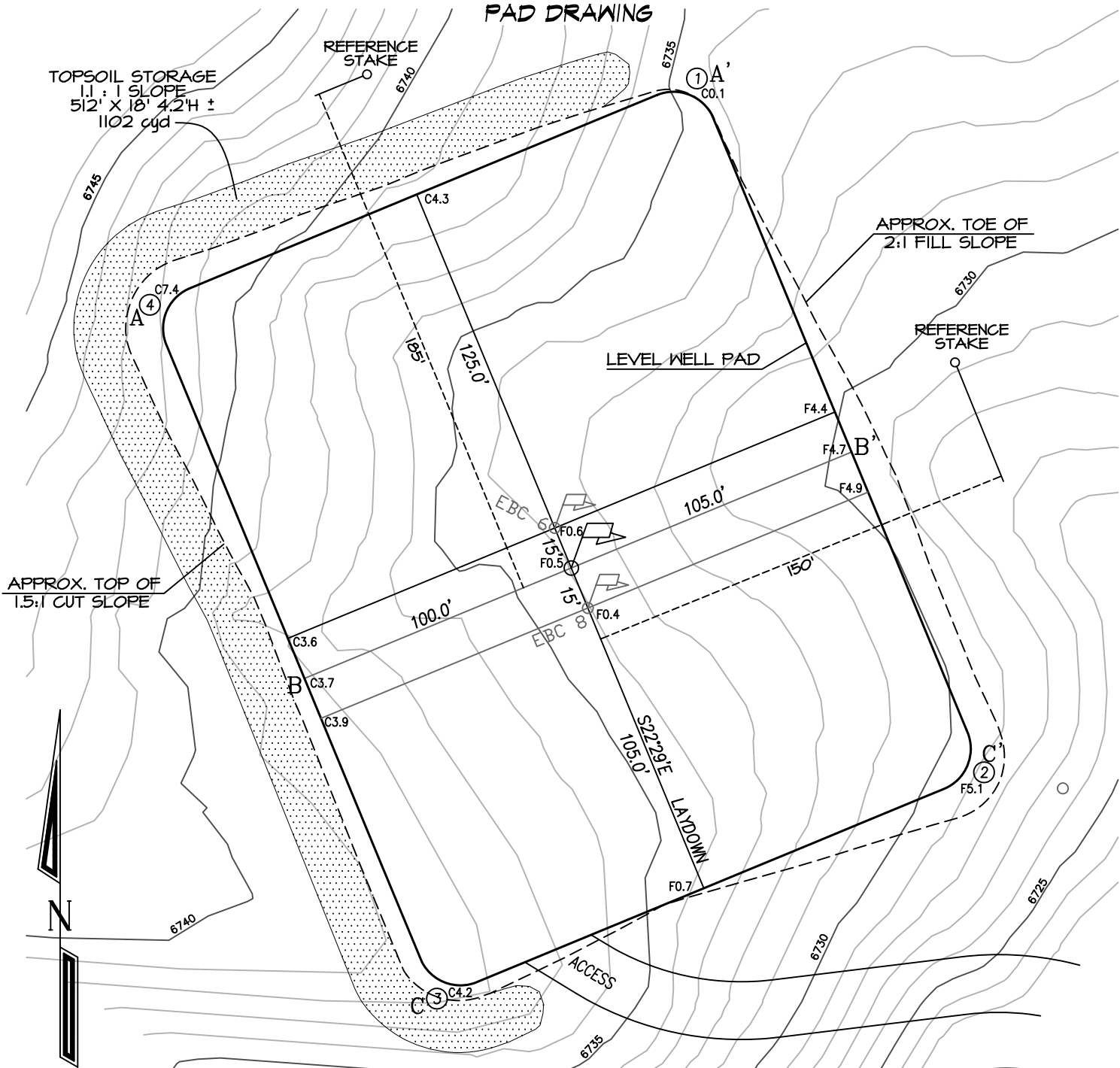


**CATAMOUNT ENERGY PARTNERS: BULL CREEK UNIT 28-2**  
**1323' FSL, 1325' FEL, SECTION 28, T-34-N, R-5-W, N.M.P.M.,**  
**ARCHULETA COUNTY, CO. GROUND LEVEL ELEVATION: 6734'**  
**LAT: 37.159047, LON: 107.393403 NAD 83 DATUM**

**PAD DRAWING**



Contours created from files provided by Stoner Engineering  
 CONTOUR INTERVAL = 1'

ROUND CORNERS AT 15'  
 RADIUS OR AS NEEDED

6" TOPSOIL STRIPPING

APPROXIMATE EARTHWORKS	
CUT:	3,747 CUBIC YARDS
FILL:	2,465 CUBIC YARDS
TOPSOIL:	1,102 CUBIC YARDS
NET EXPORT:	0 CUBIC YARDS

EXISTING PAD SIZE:	0.00 ACRES
PROPOSED EXPANSION:	0.00 ACRES
LEVEL PAD SIZE:	1.22 ACRES
TOTAL DISTURBED AREA:	1.37 ACRES
PERMITTED AREA:	1.37 ACRES

STAMP & SIGNATURE APPLY TO  
 FIGURES 2 & 3 HEREAFTER

**FIGURE 1**

