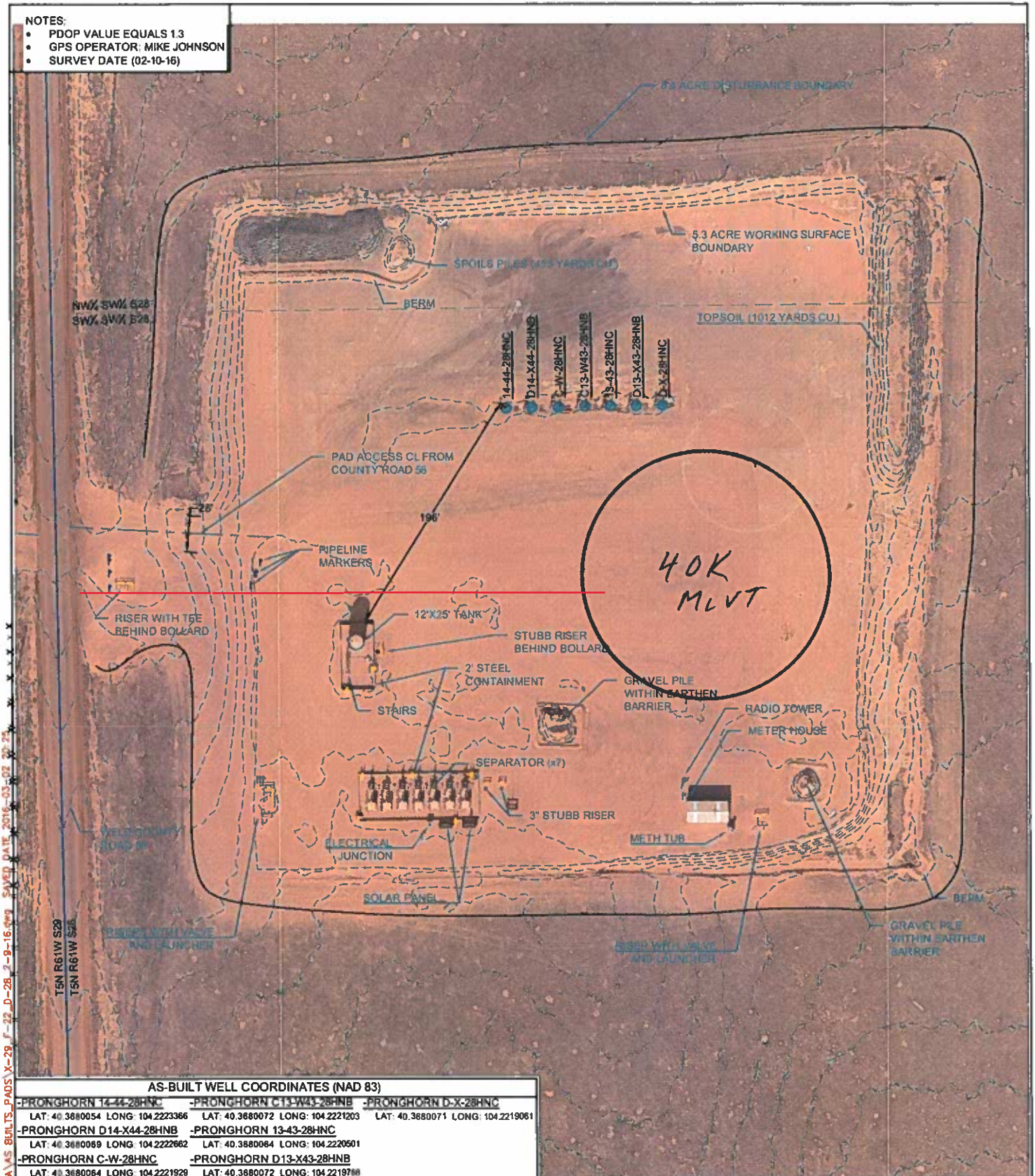


- NOTES:
- PDOP VALUE EQUALS 1.3
 - GPS OPERATOR: MIKE JOHNSON
 - SURVEY DATE (02-10-16)



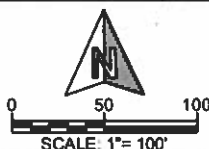
AS-BUILT WELL COORDINATES (NAD 83)

-PRONGHORN 14-44-28HNC	-PRONGHORN C13-W43-28HNB	-PRONGHORN D-X-28HNC
LAT: 40.3680054 LONG: 104.2223366	LAT: 40.3680072 LONG: 104.2221203	LAT: 40.3680071 LONG: 104.2219061
-PRONGHORN D14-X44-28HNB	-PRONGHORN 13-43-28HNC	
LAT: 40.3680069 LONG: 104.2222662	LAT: 40.3680064 LONG: 104.2220601	
-PRONGHORN C-W-28HNC	-PRONGHORN D13-X43-28HNB	
LAT: 40.3680064 LONG: 104.2221929	LAT: 40.3680072 LONG: 104.2219788	



WILLIAM H. SMITH & ASSOCIATES, Inc.
 155 N. 1st Street
 Lander, WY 82520
 Phone: 307-335-5646

Drawn By: MAM
 Job No: 2015043
 Checked By: DAF
 Date: 02/12/16
 Revision:



IF BAR LENGTH DOES NOT EQUAL 1" (ONE INCH), THIS PAGE WAS NOT PLOTTED TO THE INTENDED SCALE

AS-BUILT EXHIBIT

PRONGHORN D-28 PAD
 SW $\frac{1}{4}$ SW $\frac{1}{4}$, SECTION 28,
 T.5N., R.61W., 6th PM
 WELD COUNTY, COLORADO



410 17th Street
 Denver, CO 80202
 (720) 440-6100

SHEET

1

OF

1