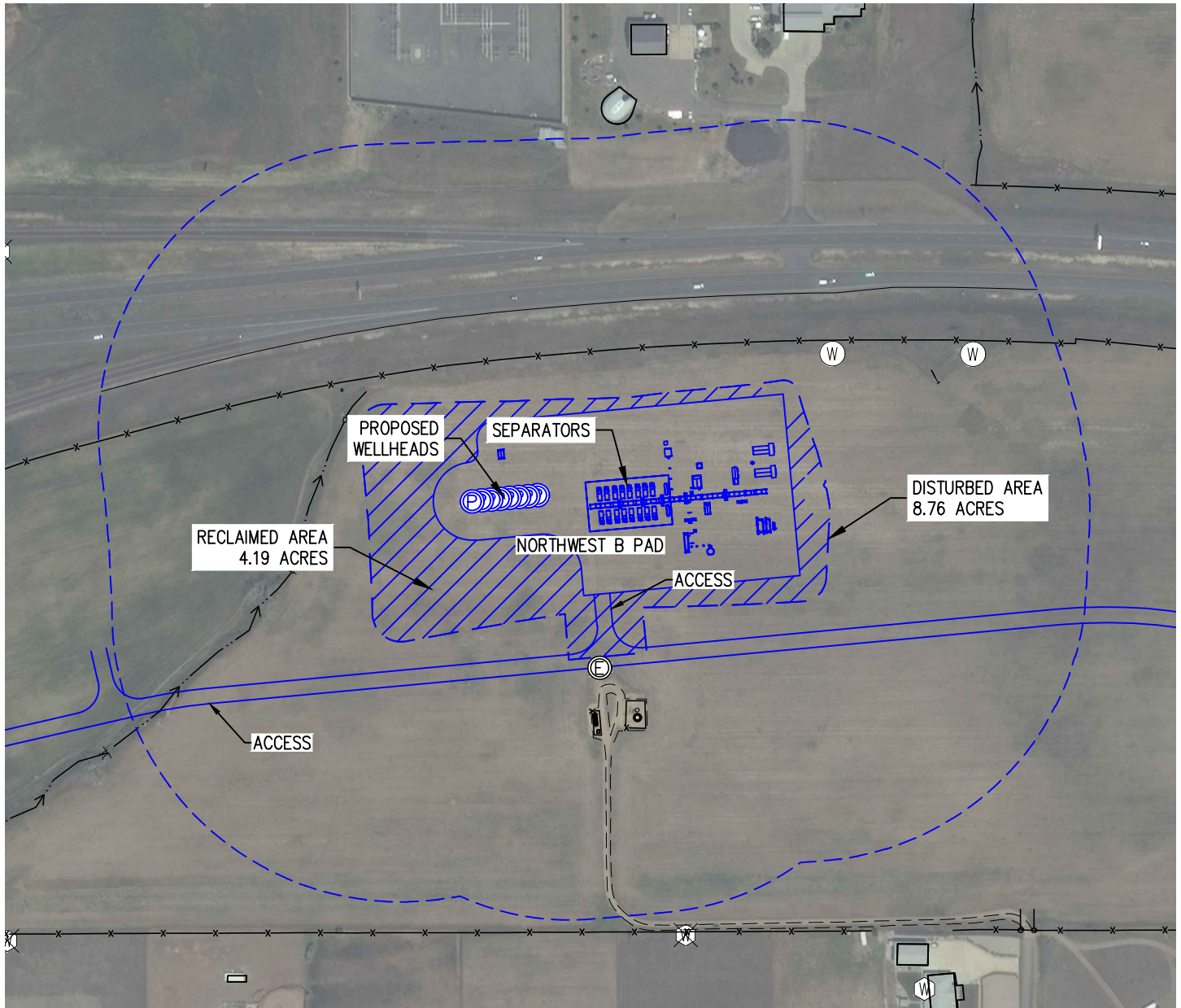
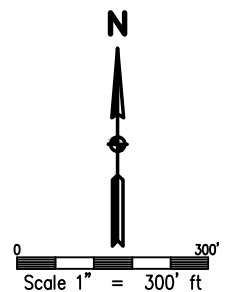


# FACILITY LAYOUT DRAWING NORTHWEST B PAD

SECTION 9, TOWNSHIP 1 SOUTH, RANGE 68 WEST, 6TH P.M.



NOTE: PROPOSED FEATURES SHOWN IN BLUE



## DISTURBED/RECLAIMED AREAS

TOTAL DISTURBED AREA OF  
LOCATION= 8.76 ACRES  
TOTAL DISTURBED AREA OF  
LOCATION AFTER RECLAMATION=  
4.56 ACRES



DRAWN BY BGR	CHECKED BY AAD
INITIAL SUBMITTAL 1/23/2018	REVISED N/A
DRAWING SIZE 8.5" X 11"	JOB NO. EXT01588W09-02
SHEET 1	OF 1

**BASELINE**  
Engineering - Planning - Surveying

4007 S. LINCOLN AVENUE, SUITE 405 - LOVELAND, COLORADO 80537  
P: 970.363.7800 - F: 970.363.7801 - [www.baselinecorp.com](http://www.baselinecorp.com)