

GOLDEN EAGLE MINE 73-94 API# 05-071-06399 – TIMBER CREEK
OGCC OPERATOR NUMBER 10672 – INSPECTION DATE: APRIL 12, 2018
CORRECTIVE ACTIONS COMPLETED REGARDING COGCC FIR DOCUMENT # 680102779



PHOTO 1 :FACING SOUTH FROM THE ENTRANCE OF GOLDEN EAGLE MINE 73-94 RECLAMATION. THE ENTRANCE ROAD AND WELL PAD WERE RECONTOURED TO MATCH THE SURROUNDING TERRAIN. GRADING TECHNIQUES WERE INSTALLED ON THE CONTOUR TO PROMOTE GROUND INFILTRATION AND PREPARE THE SOIL FOR SEEDING. THE EARTH DISTURBANCE WAS STABILIZED BY HYDRO-SEEDING USING AN APPROVED HILL RANCH SEED MIX TO PROMOTE THE ESTABLISHMENT OF VEGETATION. ALL WEEDS WERE SCRAPED UP AND BURIED IN THE SOIL DURING THE RECLAMATION ACTIVITIES. ALL RECLAMATION PROJECTS WILL BE INCORPORATED INTO TIMBER CREEK'S WEED MANAGEMENT PLAN.

GOLDEN EAGLE MINE 73-94 API# 05-071-06399 – TIMBER CREEK
OGCC OPERATOR NUMBER 10672 – INSPECTION DATE: APRIL 12, 2018
CORRECTIVE ACTIONS COMPLETED REGARDING COGCC FIR DOCUMENT # 680102779



PHOTO 2 : GOLDEN EAGLE MINE 73-94 RECLAMATION. WELL PAD WAS RECONTOURED TO MATCH THE SURROUNDING TERRAIN. GRADING TECHNIQUES WERE INSTALLED ON THE CONTOUR TO PROMOTE GROUND INFILTRATION AND PREPARE THE SOIL FOR SEEDING. THE EARTH DISTURBANCE WAS STABILIZED BY HYDRO-SEEDING USING AN APPROVED HILL RANCH SEED MIX TO PROMOTE THE ESTABLISHMENT OF VEGETATION. THE TOP SOIL STOCKPILE WAS UTILIZED DURING RECLAMATION ACTIVITIES. A DIRT BERM WAS INSTALLED DOWN GRADIENT OF THE PROJECT TO PROVIDE PERIMETER SEDIMENT CONTROL FOR THE WELL PAD. ALL WEEDS WERE SCRAPED UP AND BURIED IN THE SOIL DURING THE RECLAMATION ACTIVITIES. ALL RECLAMATION PROJECTS WILL BE INCORPORATED INTO TIMBER CREEK'S WEED MANAGEMENT PLAN. ALL THE LOCATION SIGN AND POSTS WERE REMOVED FROM LOCATION.

GOLDEN EAGLE MINE 73-94 API# 05-071-06399 – TIMBER CREEK
OGCC OPERATOR NUMBER 10672 – INSPECTION DATE: APRIL 12, 2018
CORRECTIVE ACTIONS COMPLETED REGARDING COGCC FIR DOCUMENT # 680102779



PHOTO 3 : GOLDEN EAGLE MINE 73-94 RECLAMATION. THE WELL PAD WAS RECONTOURED TO MATCH THE SURROUNDING TERRAIN. GRADING TECHNIQUES WERE INSTALLED ON THE CONTOUR TO PROMOTE GROUND INFILTRATION AND PREPARE THE SOIL FOR SEEDING. THE EARTH DISTURBANCE WAS STABILIZED BY HYDRO-SEEDING USING AN APPROVED HILL RANCH SEED MIX TO PROMOTE THE ESTABLISHMENT OF VEGETATION. ALL WEEDS WERE SCRAPED UP AND BURIED IN THE SOIL DURING THE RECLAMATION ACTIVITIES. ALL RECLAMATION PROJECTS WILL BE INCORPERATED INTO TIMBER CREEK'S WEED MANAGEMENT PLAN.

GOLDEN EAGLE MINE 73-94 MAIN ACCESS ROAD RECLAMATION API# 05-071-06399 – TIMBER CREEK
OGCC OPERATOR NUMBER 10672 – INSPECTION DATE: APRIL 12, 2018
CORRECTIVE ACTIONS COMPLETED REGARDING COGCC FIR DOCUMENT # 680102779



PHOTO 4 : FACING SOUTH ALONG THE MAIN ACCESS ROAD EAST OF THE GOLDEN EAGLE MINE 73-94 WELL PAD. THE MAIN ACCESS ROAD WAS RECONTOURED TO MATCH THE SURROUNDING TERRAIN. GRADING TECHNIQUES WERE INSTALLED ON THE CONTOUR TO PROMOTE GROUND INFILTRATION AND PREPARE THE SOIL FOR SEEDING. THE EARTH DISTURBANCE WAS STABILIZED BY HYDRO-SEEDING USING AN APPROVED HILL RANCH SEED MIX TO PROMOTE THE ESTABLISHMENT OF VEGETATION.

GOLDEN EAGLE MINE 73-94 MAIN ACCESS ROAD RECLAMATION API# 05-071-06399 – TIMBER CREEK
OGCC OPERATOR NUMBER 10672 – INSPECTION DATE: APRIL 12, 2018
CORRECTIVE ACTIONS COMPLETED REGARDING COGCC FIR DOCUMENT # 680102779



PHOTO 5 : FACING SOUTH ALONG THE MAIN ACCESS ROAD EAST OF THE GOLDEN EAGLE MINE 73-94 WELL PAD. THE MAIN ACCESS ROAD WAS RECONTOURED TO MATCH THE SURROUNDING TERRAIN. GRADING TECHNIQUES WERE INSTALLED ON THE CONTOUR TO PROMOTE GROUND INFILTRATION AND PREPARE THE SOIL FOR SEEDING. THE EARTH DISTURBANCE WAS STABILIZED BY HYDRO-SEEDING USING AN APPROVED HILL RANCH SEED MIX TO PROMOTE THE ESTABLISHMENT OF VEGETATION.

GOLDEN EAGLE MINE 73-94 MAIN ACCESS ROAD RECLAMATION API# 05-071-06399 – TIMBER CREEK
OGCC OPERATOR NUMBER 10672 – INSPECTION DATE: APRIL 12, 2018
CORRECTIVE ACTIONS COMPLETED REGARDING COGCC FIR DOCUMENT # 680102779

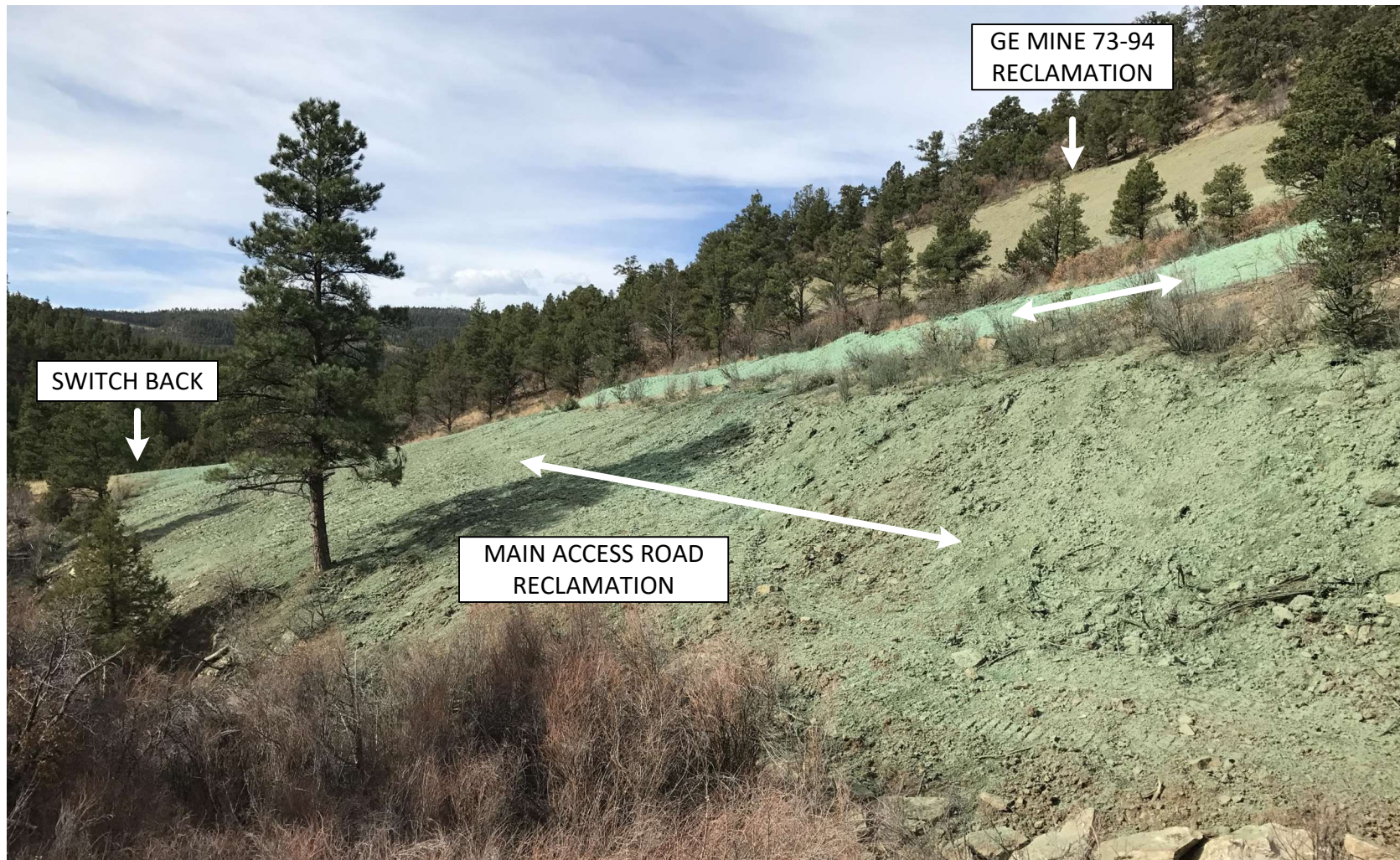


PHOTO 6 : FACING SOUTHWEST ALONG THE MAIN ACCESS ROAD EAST OF THE GOLDEN EAGLE MINE 73-94 WELL PAD. THE MAIN ACCESS ROAD WAS RECONTOURED TO MATCH THE SURROUNDING TERRAIN. GRADING TECHNIQUES WERE INSTALLED ON THE CONTOUR TO PROMOTE GROUND INFILTRATION AND PREPARE THE SOIL FOR SEEDING. THE EARTH DISTURBANCE WAS STABILIZED BY HYDRO-SEEDING USING AN APPROVED HILL RANCH SEED MIX TO PROMOTE THE ESTABLISHMENT OF VEGETATION. THE 2 INCH DRIP RISER WAS REMOVED FROM THE PROJECT. A FORM 4 SUNDRY NOTICE WAS SUBMITTED TO THE COGCC TO ABANDON THE PIPELINE IN PLACE IN ACCORDANCE WITH THE 1103 RULE.

GOLDEN EAGLE MINE 73-94 MAIN ACCESS ROAD RECLAMATION API# 05-071-06399 – TIMBER CREEK
OGCC OPERATOR NUMBER 10672 – INSPECTION DATE: APRIL 17, 2018
CORRECTIVE ACTIONS COMPLETED REGARDING COGCC FIR DOCUMENT # 680102779



PHOTO 7 : FACING SOUTH TOWARD THE GOLDEN EAGLE (GE) MINE 73-94 WELL PAD RECLAMATION. THE MAIN ACCESS ROAD NORTH OF THE GE 73-94 WAS RECONTOURED TO MATCH THE SURROUNDING TERRAIN. GRADING TECHNIQUES WERE INSTALLED ON THE CONTOUR TO PROMOTE GROUND INFILTRATION FROM RUN OFF. THE EARTH DISTURBANCE WAS STABILIZED BY HYDRO-SEEDING USING AN APPROVED HILL RANCH SEED MIX TO PROMOTE THE ESTABLISHMENT OF VEGETATION. ARMOR WAS PLACED IN THE ARROYO FOR EROSION CONTROLL DURING RUN OFF EVENTS.

GOLDEN EAGLE MINE 73-94 MAIN ACCESS ROAD RECLAMATION API# 05-071-06399 – TIMBER CREEK
OGCC OPERATOR NUMBER 10672 – INSPECTION DATE: APRIL 17, 2018
CORRECTIVE ACTIONS COMPLETED REGARDING COGCC FIR DOCUMENT # 680102779



PHOTO 8: ARMOR WAS PLACED IN THE ARROYO FOR EROSION CONTROLL DURING RUN OFF EVENTS.

GOLDEN EAGLE MINE 73-94 MAIN ACCESS ROAD RECLAMATION API# 05-071-06399 – TIMBER CREEK
OGCC OPERATOR NUMBER 10672 – INSPECTION DATE: APRIL 17, 2018
CORRECTIVE ACTIONS COMPLETED REGARDING COGCC FIR DOCUMENT # 680102779



PHOTO 9 : FACING SOUTH, THE MAIN ACCESS ROAD NORTH OF THE GE 73-94 WAS RECONTOURED TO MATCH THE SURROUNDING TERRAIN. GRADING TECHNIQUES WERE INSTALLED ON THE CONTOUR TO PROMOTE GROUND INFILTRATION AND PREPARE THE SOIL FOR SEEDING. THE EARTH DISTURBANCE WAS STABILIZED BY HYDRO-SEEDING USING AN APPROVED HILL RANCH SEED MIX TO PROMOTE THE ESTABLISHMENT OF VEGETATION.

GOLDEN EAGLE MINE 73-94 MAIN ACCESS ROAD RECLAMATION API# 05-071-06399 – TIMBER CREEK
OGCC OPERATOR NUMBER 10672 – INSPECTION DATE: APRIL 17, 2018
CORRECTIVE ACTIONS COMPLETED REGARDING COGCC FIR DOCUMENT # 680102779



PHOTO 10 : FACING SOUTH, THE MAIN ACCESS ROAD NORTH OF THE GE 73-94 WAS RECONTOURED TO MATCH THE SURROUNDING TERRAIN. GRADING TECHNIQUES WERE INSTALLED ON THE CONTOUR TO PROMOTE GROUND INFILTRATION AND PREPARE THE SOIL FOR SEEDING. THE EARTH DISTURBANCE WAS STABILIZED BY HYDRO-SEEDING USING AN APPROVED HILL RANCH SEED MIX TO PROMOTE THE ESTABLISHMENT OF VEGETATION. ARMOR WAS PLACED IN THE ARROYO FOR EROSION CONTROLL DURING RUN OFF EVENTS.

GOLDEN EAGLE MINE 73-94 MAIN ACCESS ROAD RECLAMATION API# 05-071-06399 – TIMBER CREEK
OGCC OPERATOR NUMBER 10672 – INSPECTION DATE: APRIL 23, 2018
CORRECTIVE ACTIONS COMPLETED REGARDING COGCC FIR DOCUMENT # 680102779



PHOTO 11 : FACING SOUTH, THE MAIN ACCESS ROAD BELOW THE PRODUCING WELL GOLDEN EAGLE 20-09 API # 071-08803 WAS RECONTOURED TO MATCH THE SURROUNDING TERRAIN. SOIL ROUGHENING WAS USED TO PROMOTE GROUND INFILTRATION AND PREPARE THE SOIL FOR SEEDING. THE EARTH DISTURBANCE WAS STABILIZED BY HYDRO-SEEDING USING AN APPROVED HILL RANCH SEED MIX TO PROMOTE THE ESTABLISHMENT OF VEGETATION.

GOLDEN EAGLE MINE 73-94 MAIN ACCESS ROAD RECLAMATION API# 05-071-06399 – TIMBER CREEK
OGCC OPERATOR NUMBER 10672 – INSPECTION DATE: APRIL 23, 2018
CORRECTIVE ACTIONS COMPLETED REGARDING COGCC FIR DOCUMENT # 680102779



PHOTO 12 : FACING SOUTH, THE MAIN ACCESS ROAD BELOW THE PRODUCING WELL GOLDEN EAGLE 20-09 API # 071-08803 WAS RECONTOURED TO MATCH THE SURROUNDING TERRAIN. SOIL ROUGHENING WAS USED TO PROMOTE GROUND INFILTRATION AND PREPARE THE SOIL FOR SEEDING. THE EARTH DISTURBANCE WAS STABILIZED BY HYDRO-SEEDING USING AN APPROVED HILL RANCH SEED MIX TO PROMOTE THE ESTABLISHMENT OF VEGETATION. ARMOR WAS PLACED WHERE RUN OFF WILL DISCHARGE FOR EROSION CONTROLL.

GOLDEN EAGLE MINE 73-94 MAIN ACCESS ROAD RECLAMATION API# 05-071-06399 – TIMBER CREEK
OGCC OPERATOR NUMBER 10672 – INSPECTION DATE: APRIL 26, 2018
CORRECTIVE ACTIONS COMPLETED REGARDING COGCC FIR DOCUMENT # 680102779



PHOTO 13 : INTERSECTION OF THE ACCESS ROAD RECLAMATION AND THE LEASE ROAD GOING TO THE PRODUCING WELL GOLDEN EAGLE 20-09 API # 071-08803. THE LOWER ROAD WAS RECONTOURED TO MATCH THE SURROUNDING TERRAIN. SOIL ROUGHENING WAS USED TO PROMOTE GROUND INFILTRATION AND PREPARE THE SOIL FOR SEEDING. THE EARTH DISTURBANCE WAS STABILIZED BY HYDRO-SEEDING USING AN APPROVED HILL RANCH SEED MIX TO PROMOTE THE ESTABLISHMENT OF VEGETATION. ARMOR WAS PLACED AT THE END OF THE RECLAMATION TO DETER VEHICLE ACCESS.

GOLDEN EAGLE MINE 73-94 MAIN ACCESS ROAD RECLAMATION API# 05-071-06399 – TIMBER CREEK
OGCC OPERATOR NUMBER 10672 – INSPECTION DATE: APRIL 26, 2018
CORRECTIVE ACTIONS COMPLETED REGARDING COGCC FIR DOCUMENT # 680102779



PHOTO 14 : ACCESS ROAD RECLAMATION NORTHEAST OF THE PRODUCING WELL GOLDEN EAGLE 20-09 API # 071-08803. THE ACCESS ROAD WAS RECONTOURED TO MATCH THE SURROUNDING TERRAIN. SOIL ROUGHENING WAS USED TO PROMOTE GROUND INFILTRATION AND PREPARE THE SOIL FOR SEEDING. THE EARTH DISTURBANCE WAS STABILIZED BY HYDRO-SEEDING USING AN APPROVED HILL RANCH SEED MIX TO PROMOTE THE ESTABLISHMENT OF VEGETATION.