

N

LEGEND:

SL = SURFACE LOCATION.

EP = ENTRY POINT.

TBH = TARGET BOTTOM HOLE.

●

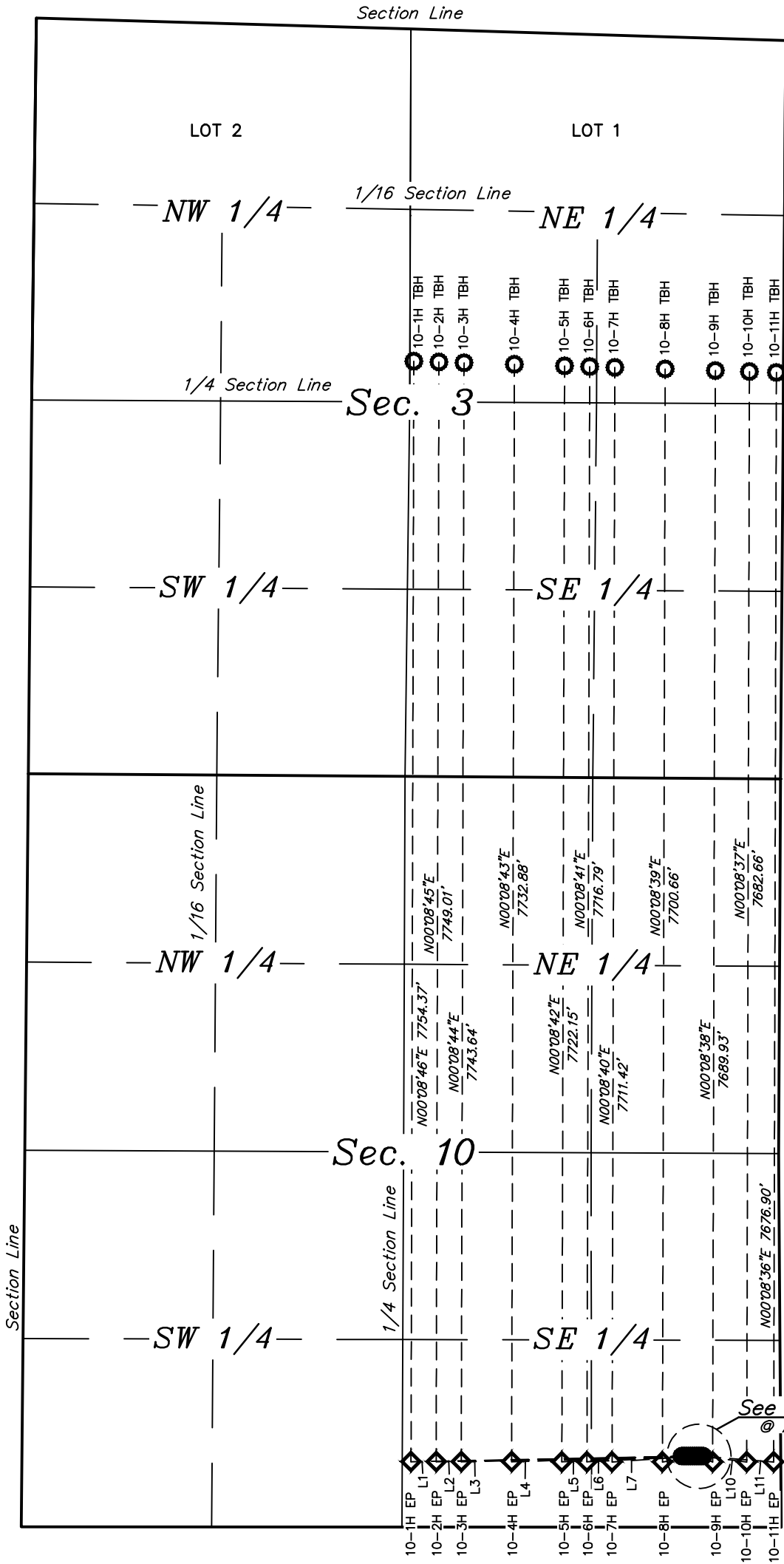
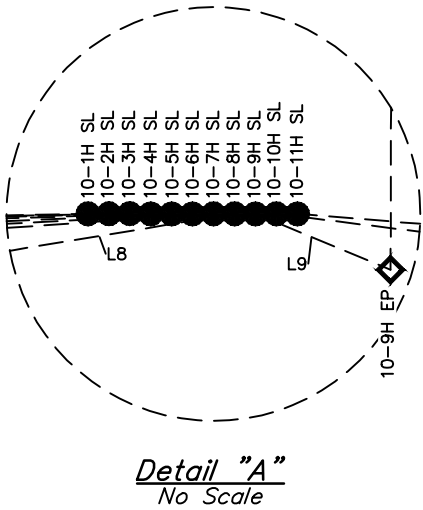
 = SURFACE LOCATION.

◆

 = ENTRY POINT.

○

 = TARGET BOTTOM HOLE.



| LINE TABLE | | |
|------------|-------------|----------|
| LINE | DIRECTION | LENGTH |
| L1 | S88°50'03"W | 1909.62' |
| L2 | S88°43'18"W | 1747.73' |
| L3 | S88°35'13"W | 1585.71' |
| L4 | S88°11'46"W | 1245.81' |
| L5 | S87°30'35"W | 907.09' |
| L6 | S86°57'51"W | 745.17' |
| L7 | S86°06'16"W | 583.50' |
| L8 | S80°39'24"W | 245.46' |
| L9 | S67°33'37"E | 104.75' |
| L10 | S82°53'12"E | 324.32' |
| L11 | S85°22'25"E | 498.39' |

NOTES:

REV: 2 01-25-18 C.IVIE (WELL & PAD NAME CHANGE)

VERDAD RESOURCES LLC

HDI KF 01 65 10 PAD
SE 1/4 SE 1/4, SECTION 10, T1N, R65W, 6th P.M.
WELD COUNTY, COLORADO



UELS, LLC
Corporate Office * 85 South 200 East
Vernal, UT 84078 * (435) 789-1017

| | | | |
|-----------------|-------------|-----------|------------|
| SURVEYED BY | GREG WEIMER | 10-30-17 | SCALE |
| DRAWN BY | C.IVIE | 11-22-17 | 1" = 1000' |
| MULTI-WELL PLAN | | FIGURE #6 | |