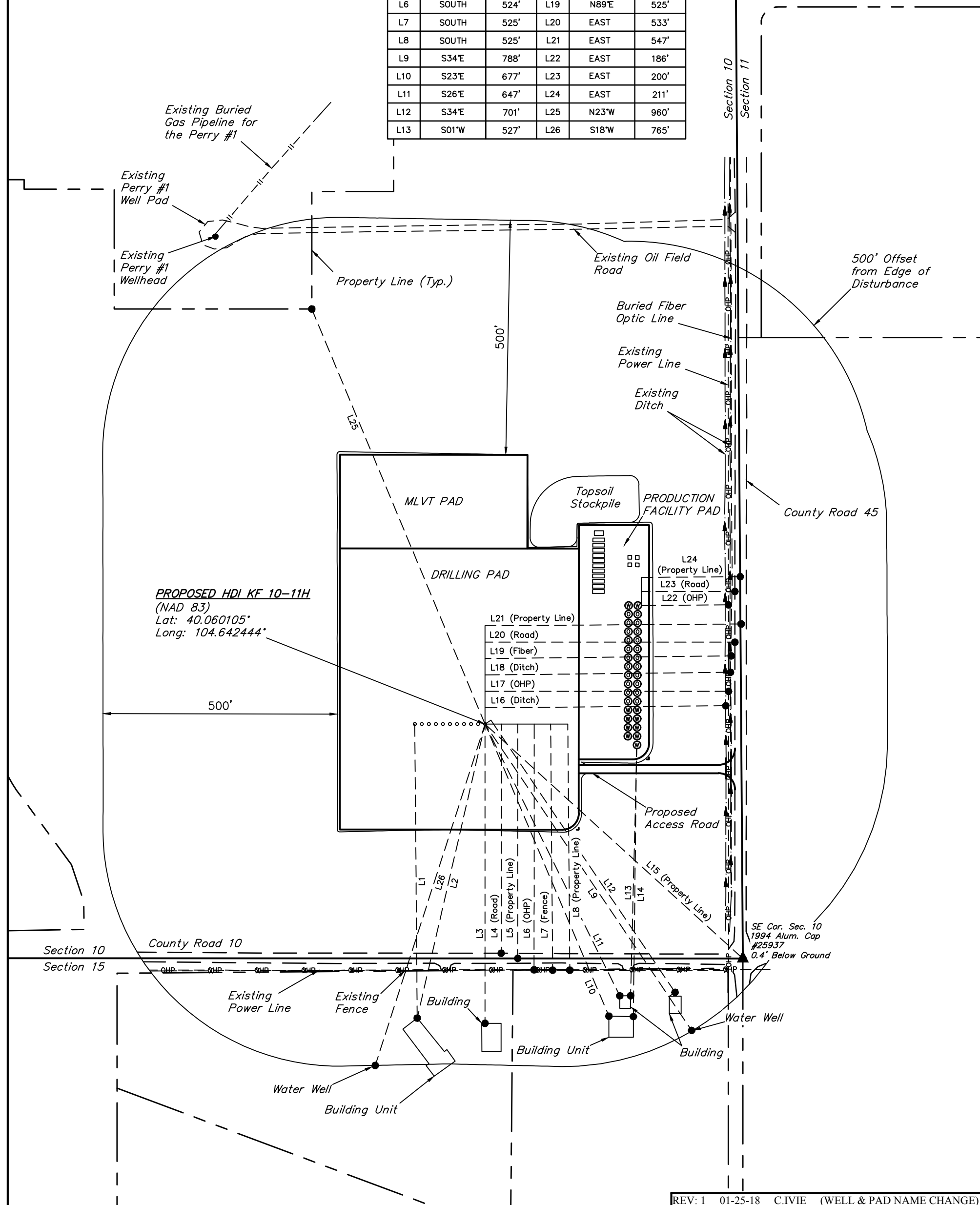


LINE TABLE			LINE TABLE		
LINE	DIRECTION	LENGTH	LINE	DIRECTION	LENGTH
L1	SOUTH	627'	L14	S01°W	572'
L2	S13°W	644'	L15	S48°E	744'
L3	SOUTH	638'	L16	EAST	514'
L4	SOUTH	489'	L17	EAST	520'
L5	SOUTH	500'	L18	N89°E	524'
L6	SOUTH	524'	L19	N89°E	525'
L7	SOUTH	525'	L20	EAST	533'
L8	SOUTH	525'	L21	EAST	547'
L9	S34°E	788'	L22	EAST	186'
L10	S23°E	677'	L23	EAST	200'
L11	S26°E	647'	L24	EAST	211'
L12	S34°E	701'	L25	N23°W	960'
L13	S01°W	527'	L26	S18°W	765'



REV: 1 01-25-18 C.IVIE (WELL & PAD NAME CHANGE)

VERDAD RESOURCES LLC

HDI KF 01 65 10 PAD
SE 1/4 SE 1/4, SECTION 10, T1N, R65W, 6th P.M.
WELD COUNTY, COLORADO

SURVEYED BY	GREG WEIMER	10-30-17	SCALE
DRAWN BY	D.J.W.	11-27-17	1" = 200'
LOCATION DRAWING			FIGURE #5



UELS, LLC
Corporate Office * 85 South 200 East
Vernal, UT 84078 * (435) 789-1017