

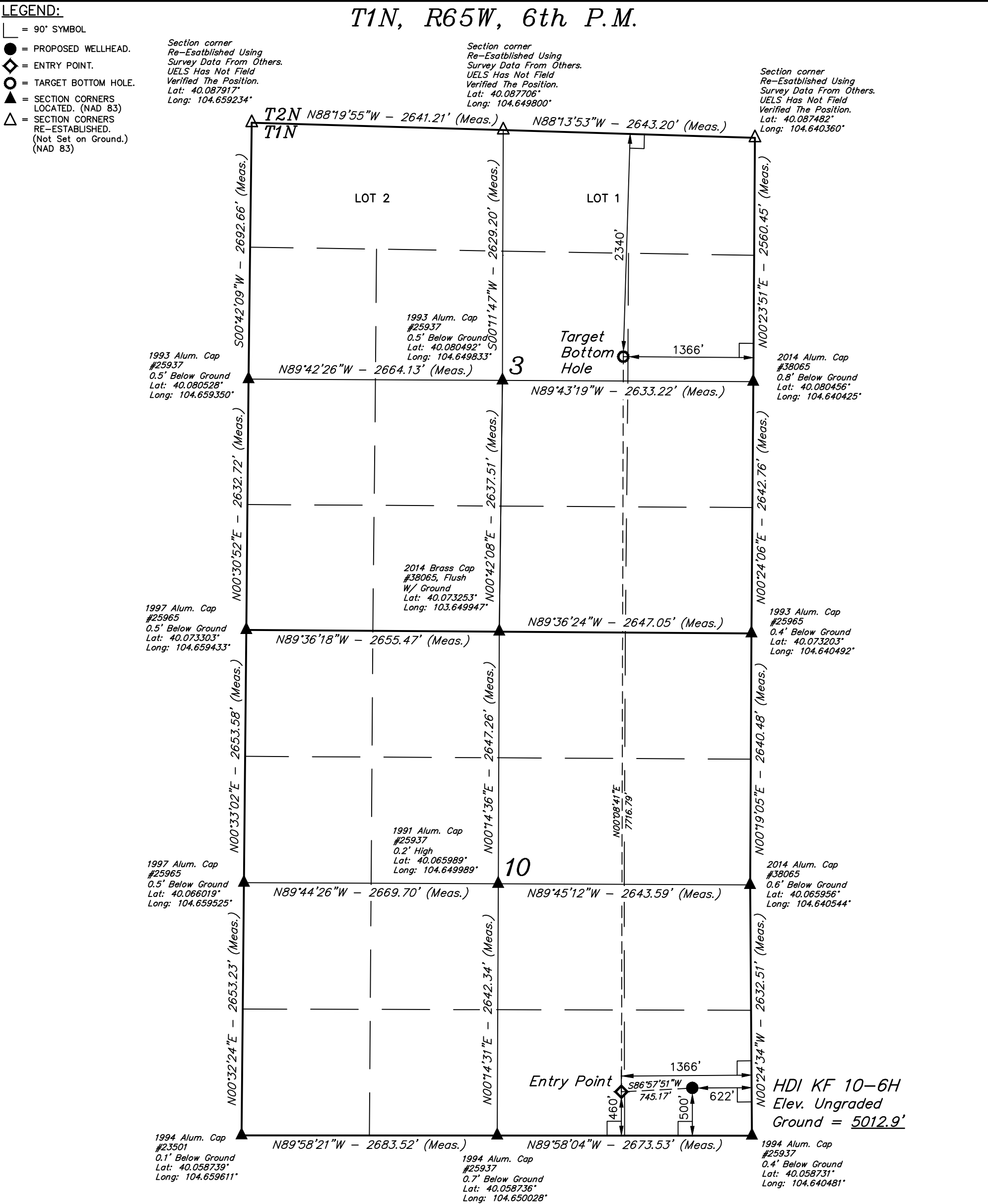
LEGEND:

- └─ = 90° SYMBOL
- = PROPOSED WELLHEAD.
- ◆ = ENTRY POINT.
- = TARGET BOTTOM HOLE.
- ▲ = SECTION CORNERS LOCATED. (NAD 83)
- △ = SECTION CORNERS RE-ESTABLISHED. (Not Set on Ground.) (NAD 83)

Section corner
Re-Established Using
Survey Data From Others.
UELS Has Not Field
Verified The Position.
Lat: 40.087917°
Long: 104.659234°

Section corner
Re-Established Using
Survey Data From Others.
UELS Has Not Field
Verified The Position.
Lat: 40.087706°
Long: 104.649800°

Section corner
Re-Established Using
Survey Data From Others.
UELS Has Not Field
Verified The Position.
Lat: 40.087482°
Long: 104.640360°



NAD 83 (SURFACE LOCATION)	NAD 83 (ENTRY POINT)	NAD 83 (TARGET BOTTOM HOLE)
LATITUDE = 40°03'36.38" (40.060105)	LATITUDE = 40°03'35.99" (40.059997)	LATITUDE = 40°04'52.23" (40.081175)
LONGITUDE = 104°38'33.76" (104.642712)	LONGITUDE = 104°38'43.33" (104.645370)	LONGITUDE = 104°38'43.08" (104.645299)
NAD 27 (SURFACE LOCATION)	NAD 27 (ENTRY POINT)	NAD 27 (TARGET BOTTOM HOLE)
LATITUDE = 40°03'36.44" (40.060122)	LATITUDE = 40°03'36.05" (40.060014)	LATITUDE = 40°04'52.29" (40.081192)
LONGITUDE = 104°38'31.89" (104.642192)	LONGITUDE = 104°38'41.46" (104.644850)	LONGITUDE = 104°38'41.20" (104.644779)
STATE PLANE NAD 83 (CO. NORTH)	STATE PLANE NAD 83 (CO. NORTH)	STATE PLANE NAD 83 (CO. NORTH)
N: 1265901.46 E: 3239956.88	N: 1265854.88 E: 3239213.38	N: 1273569.34 E: 3239158.91
STATE PLANE NAD 27 (CO. NORTH)	STATE PLANE NAD 27 (CO. NORTH)	STATE PLANE NAD 27 (CO. NORTH)
N: 265904.22 E: 2240108.68	N: 265857.63 E: 2239365.19	N: 273572.01 E: 2239310.65

CERTIFICATE

THIS IS TO CERTIFY THAT THE ABOVE INFORMATION IS A TRUE AND CORRECT COPY OF THE ORIGINAL SURVEY RECORDS AND THAT THE SAME ARE TRUE AND CORRECT TO THE BEST OF MY KNOWLEDGE AND BELIEF.



REV: 2 01-25-18 C.IVIE (WELL NAME CHANGE)

BASIS OF BEARINGS
BASIS OF BEARINGS IS A G.P.S. OBSERVATION

BASIS OF ELEVATION
USGS COOPERATIVE BASE NETWORK CONTROL STATION "HUDSON CC".
NGS DATA SHEET LISTS THE NAVD 88 ELEVATION AS BEING 4999 FEET.



UELS, LLC
Corporate Office * 85 South 200 East
Vernal, UT 84078 * (435) 789-1017



VERDAD RESOURCES LLC

HDI KF 10-6H
SE 1/4 SE 1/4, SECTION 10, T1N, R65W, 6th P.M.
WELD COUNTY, COLORADO

SURVEYED BY	GREG WEIMER	10-30-17	SCALE
DRAWN BY	C.IVIE	11-22-17	1" = 1000'

WELL LOCATION PLAT