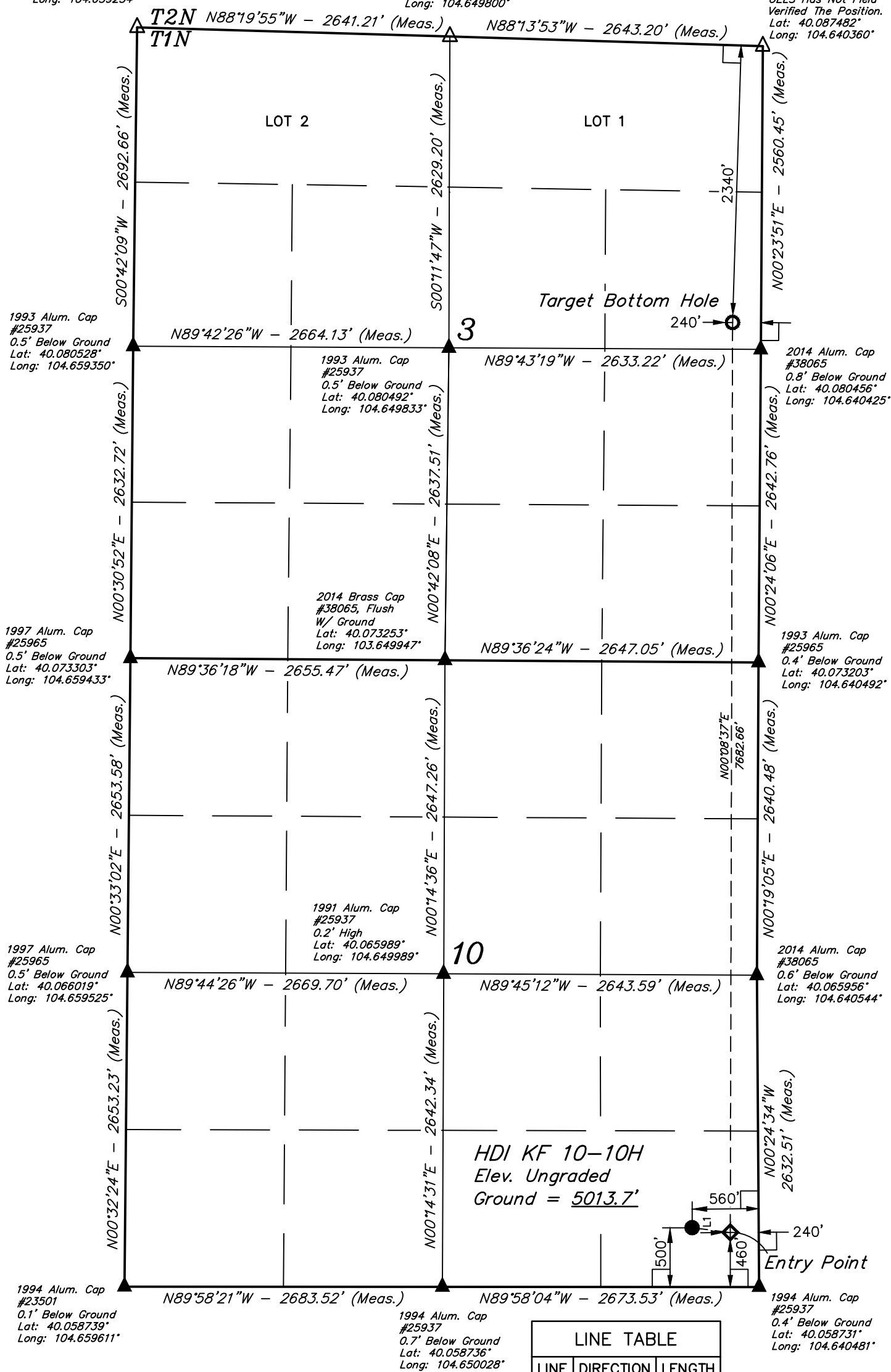


T1N, R65W, 6th P.M.

- Section corner
Re-Established Using
Survey Data From Others.
UELS Has Not Field
Verified The Position.
Lat: 40.087917°
Long: 104.659234°

- Section corner
Re-Established Using
Survey Data From Others.
UELS Has Not Field
Verified The Position.
Lat: 40.087706°
Long: 104.649800°

- Section corner
Re-Established Using
Survey Data From Others.
UELS Has Not Field
Verified The Position.
Lat: 40.087482°
Long: 104.640360°



LINE TABLE		
LINE	DIRECTION	LENGTH
L1	S82°53'12"E	324.32'

PDOP = 1.4



NAD 83 (SURFACE LOCATION)	NAD 83 (ENTRY POINT)	NAD 83 (TARGET BOTTOM HOLE)
LATITUDE = 40°03'36.38" (40.060105)	LATITUDE = 40°03'35.98" (40.059995)	LATITUDE = 40°04'51.88" (40.081079)
LONGITUDE = 104°38'32.99" (104.642497)	LONGITUDE = 104°38'28.85" (104.641348)	LONGITUDE = 104°38'28.60" (104.641277)
NAD 27 (SURFACE LOCATION)	NAD 27 (ENTRY POINT)	NAD 27 (TARGET BOTTOM HOLE)
LATITUDE = 40°03'36.44" (40.060122)	LATITUDE = 40°03'36.04" (40.060012)	LATITUDE = 40°04'51.95" (40.081096)
LONGITUDE = 104°38'31.12" (104.641977)	LONGITUDE = 104°38'26.98" (104.640828)	LONGITUDE = 104°38'26.72" (104.640757)
STATE PLANE NAD 83 (CO. NORTH)	STATE PLANE NAD 83 (CO. NORTH)	STATE PLANE NAD 83 (CO. NORTH)
N: 1265902.10 E: 3240016.95	N: 1265865.04 E: 3240339.05	N: 1273545.38 E: 3240284.66
STATE PLANE NAD 27 (CO. NORTH)	STATE PLANE NAD 27 (CO. NORTH)	STATE PLANE NAD 27 (CO. NORTH)
N: 265904.86 E: 2240168.75	N: 265867.80 E: 2240490.84	N: 273548.06 E: 2240436.38

BASIS OF BEARINGS

BASIS OF BEARINGS IS A G.P.S. OBSERVATION

BASIS OF ELEVATION

USGS COOPERATIVE BASE NETWORK CONTROL STATION, DESIGNATION "HUDSON CC".
NGS DATA SHEET LISTS THE NAVD 88 ELEVATION AS BEING 4999 FEET.



UELS, LLC
Corporate Office * 85 South 200 East
Vernal, UT 84078 * (435) 789-1017



CERTIFICATE

THIS IS TO CERTIFY THAT THE ABOVE WAS PREPARED FROM FIELD
NOTES OF ACTUAL SURVEYS MADE BY ME OR UNDER MY SUPERVISION
AND THAT THE SAME ARE TRUE AND CORRECT TO THE BEST OF MY
KNOWLEDGE AND BELIEF.

REGISTERED LAND SURVEYOR
REGISTRATION NO. 28285

REGISTRATION NO. 28285

STATE OF COLORADO

01-20-18

REV: 2 01-25-18 C.IVIE (WELL NAME CHANGE)

VERDAD RESOURCES LLC

HDI KF 10-10H
SE 1/4 SE 1/4, SECTION 10, T1N, R65W, 6th P.M.
WELD COUNTY, COLORADO

SURVEYED BY	GREG WEIMER	10-30-17	SCALE
DRAWN BY	C.IVIE	11-22-17	1" = 1000'

WELL LOCATION PLAT