

LEGEND:

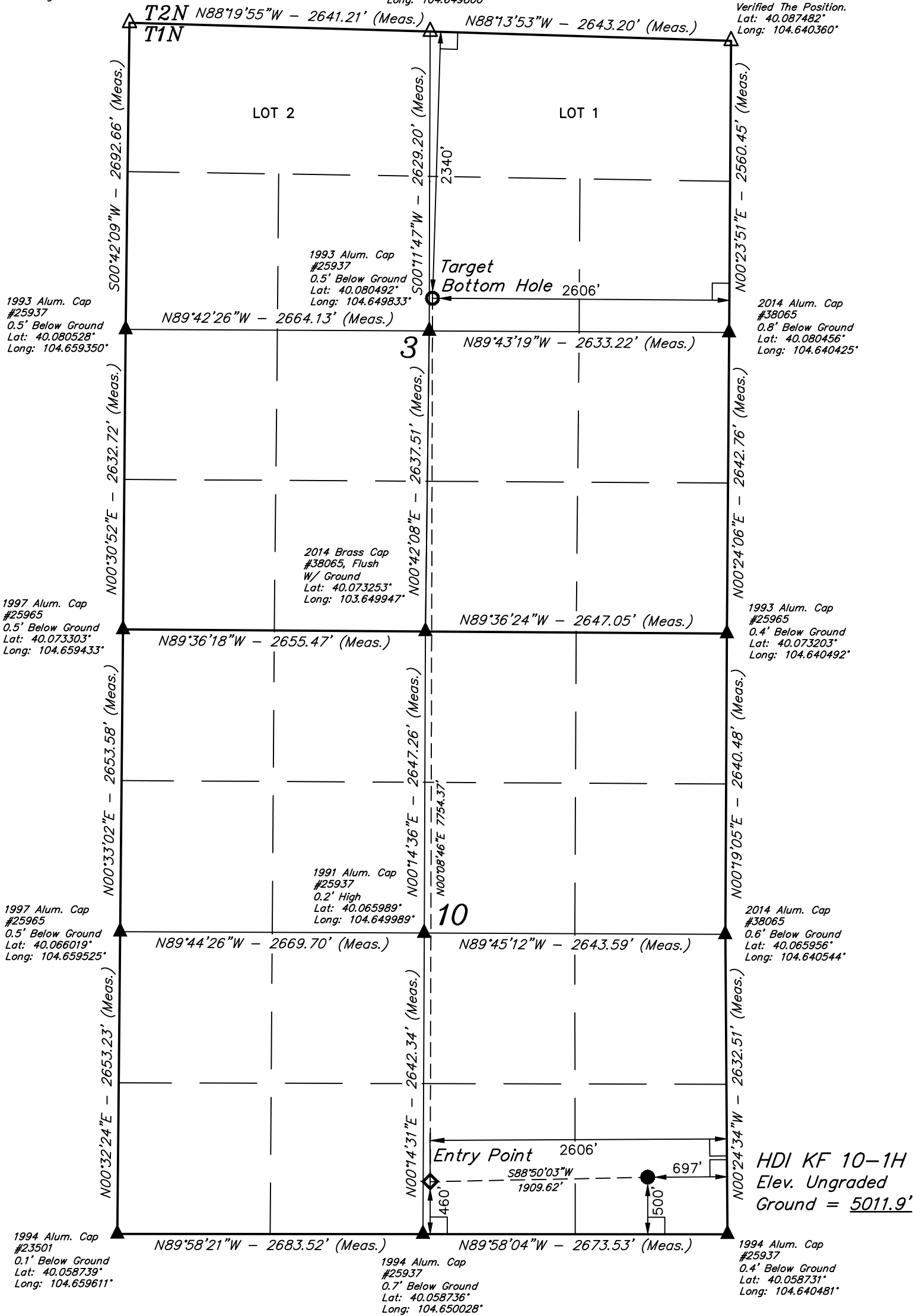
- └─ = 90° SYMBOL
- = PROPOSED WELLHEAD.
- ◆ = ENTRY POINT.
- = TARGET BOTTOM HOLE.
- ▲ = SECTION CORNERS LOCATED. (NAD 83)
- △ = SECTION CORNERS RE-ESTABLISHED. (Not Set on Ground.) (NAD 83)

Section corner
Re-Established Using
Survey Data From Others.
UELS Has Not Field
Verified The Position.
Lat: 40.087917°
Long: 104.659234°

Section corner
Re-Established Using
Survey Data From Others.
UELS Has Not Field
Verified The Position.
Lat: 40.087706°
Long: 104.649800°

Section corner
Re-Established Using
Survey Data From Others.
UELS Has Not Field
Verified The Position.
Lat: 40.087482°
Long: 104.640360°

T1N, R65W, 6th P.M.



NAD 83 (SURFACE LOCATION)	NAD 83 (ENTRY POINT)	NAD 83 (TARGET BOTTOM HOLE)
LATITUDE = 40°03'36.38" (40.060105)	LATITUDE = 40°03'36.00" (40.059999)	LATITUDE = 40°04'52.61" (40.081280)
LONGITUDE = 104°38'34.73" (104.642980)	LONGITUDE = 104°38'59.28" (104.649799)	LONGITUDE = 104°38'59.02" (104.649728)
NAD 27 (SURFACE LOCATION)	NAD 27 (ENTRY POINT)	NAD 27 (TARGET BOTTOM HOLE)
LATITUDE = 40°03'36.44" (40.060122)	LATITUDE = 40°03'36.06" (40.060016)	LATITUDE = 40°04'52.67" (40.081297)
LONGITUDE = 104°38'32.85" (104.642460)	LONGITUDE = 104°38'57.40" (104.649278)	LONGITUDE = 104°38'57.15" (104.649208)
STATE PLANE NAD 83 (CO. NORTH)	STATE PLANE NAD 83 (CO. NORTH)	STATE PLANE NAD 83 (CO. NORTH)
N: 1265900.83 E: 3239881.98	N: 1265843.70 E: 3237973.73	N: 1273595.73 E: 3237919.18
STATE PLANE NAD 27 (CO. NORTH)	STATE PLANE NAD 27 (CO. NORTH)	STATE PLANE NAD 27 (CO. NORTH)
N: 265903.59 E: 2240033.77	N: 265846.44 E: 2238125.57	N: 273598.39 E: 2238070.95

CERTIFICATE
THIS IS TO CERTIFY THAT THE ABOVE INFORMATION IS A TRUE AND CORRECT COPY OF THE NOTES OF ACTUAL SURVEYS MADE BY ME OR UNDER MY SUPERVISION, AND THAT THE SAME ARE TRUE AND CORRECT TO THE BEST OF MY KNOWLEDGE AND BELIEF.

REGISTERED LAND SURVEYOR
REGISTRATION NO. 28285
STATE OF COLORADO
2018-18

REV: 2 01-25-18 C.IVIE (WELL NAME CHANGE)

BASIS OF BEARINGS
BASIS OF BEARINGS IS A G.P.S. OBSERVATION

BASIS OF ELEVATION
USGS COOPERATIVE BASE NETWORK CONTROL STATION, DESIGNATION "HUDSON CC".
NGS DATA SHEET LISTS THE NAVD 88 ELEVATION AS BEING 4999 FEET.



UELS, LLC
Corporate Office * 85 South 200 East
Vernal, UT 84078 * (435) 789-1017



VERDAD RESOURCES LLC

HDI KF 10-1H
SE 1/4 SE 1/4, SECTION 10, T1N, R65W, 6th P.M.
WELD COUNTY, COLORADO

SURVEYED BY	GREG WEIMER	10-30-17	SCALE
DRAWN BY	C.IVIE	11-22-17	1" = 1000'

WELL LOCATION PLAT