



**NP I25 WF07B 596  
Plug & Abandon**

**PROCEDURE**

**NOTIFY THE BLM OFFICE AND COGCC AT LEAST 48 HOURS BEFORE PLUGGING OPERATIONS COMMENCE.**

**Ensure proper ground disturbance forms have been completed, one call for utility identification has been done and proper paperwork is on location.**

1. Hold pre-job safety meeting. Comply with all COGCC, BLM, and Caerus safety and environmental regulations. Scope location for base beam. If unable to use base beam, test rig anchors prior to moving in rig.
2. MIRU workover rig. Check casing, tubing, and bradenhead pressures and record them in WellView.
3. Remove existing piping on casing valve. RU blow lines from casing valves and begin blowing down casing pressure. Kill well as necessary.
4. ND wellhead and NU BOPE. Test and chart BOPs as per regulations. PU and remove tubing hanger. TOOH with tubing.
5. RU wireline and RIH w/ CIBP for 4-1/2" 11.6# casing and set between perforation stages @ ~6330'. Dump bail 8 sx Glass G neat cement on top of CIBP. WOC. Tag TOC.
6. RU wireline and RIH w/ CIBP for 4-1/2" 11.6# casing and set 50' above top perforation @ 5903'. Pressure test casing to 500 psi. If casing does not test, spot or tag subsequent plugs as appropriate.
7. Dump bail 12 sx (2.5 bbls) of Glass G neat cement (15.8 lb/gal, 1.15 cu-ft/sx) on top of CIBP @ 5903' to cover the perforations. Estimated TOC @ 5796' (100' cement cap). Tag TOC with tubing.
8. PUH with tubing to Wasatch G top @ 3796'. Mix 12 sx (2.5 bbls) of Glass G neat cement (15.8 lb/gal, 1.15 cu-ft/sx) and spot a balanced plug inside the 4-1/2" casing from 3796-3696' to cover the Wasatch G formation top. POOH with tbg.
9. RU wireline and RIH to 2579' and perforate a squeeze hole. POOH. Attempt to establish circulation. RIH with tubing to 2579', 50' below the surface casing shoe @ 2529'. Mix 69 sx Glass G neat cement (15.8 lb/gal, 1.15 cu-ft/sx) and squeeze 57 sx outside the casing, leaving 12 sx inside the casing from 2579'-2479' inside the 4-1/2" casing to cover the surface casing shoe.
10. PUH with tubing to 100'. Mix 12 sx (2.5 bbls) of Glass G neat cement (15.8 lb/gal, 1.15 cu-ft/sx) and spot inside the 4-1/2" tubing from 100' to surface. Perform a top job with cement between 8-5/8" and 4-1/2" casing using 1" from 100' to surface (8.6 bbl, 23 sx cement).
10. ND BOP and RDMO workover unit.
11. Dig down around wellhead and cut off 4' below ground level. Top off with cement if needed.
12. Weld information plate to casing stub with 1/4" weep hole. Take GPS readings of well information plate for regulatory agencies. Back fill hole and release equipment. RDMO

Emergency Contact Information:

**For immediate emergencies call 911.**

**Caerus Emergency Hotline  
(866) 580-9382**

**Grand Valley Fire Department  
(970) 285-9119  
124 Stone Quarry Road  
Parachute, CO 81635**

**Grand River Hospital District  
(970) 625-1510  
501 Airport Road  
Rifle, CO 81650**



## Schematic - Current

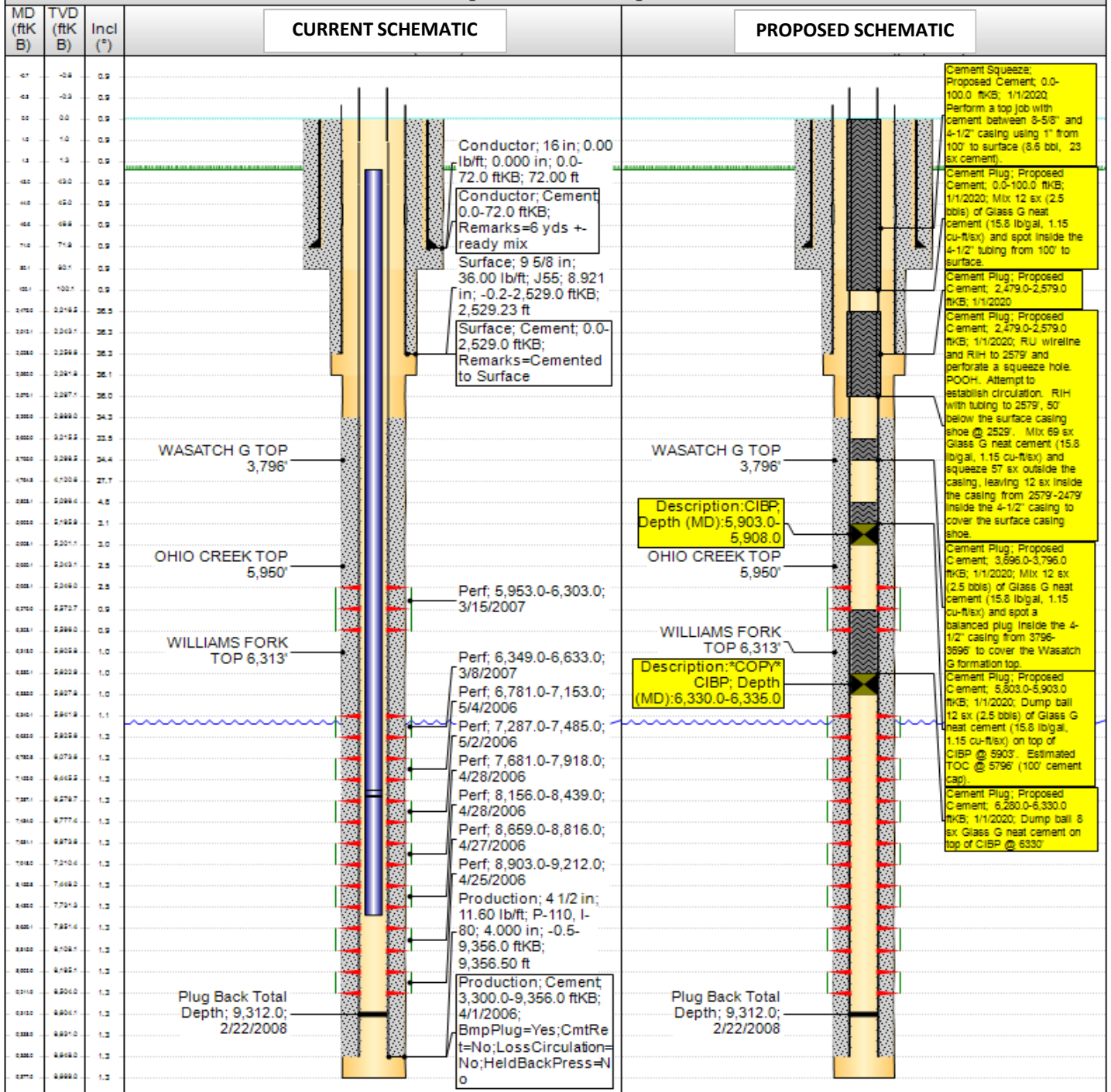
**Well Name: N Parachute WF07B I25 596**

API/UWI 05045107680000	Surface Legal Location Wildcat	Field Name Wildcat	License #	State/Province CO	Well Configuration Type Directional
Original KB Elevation (ft) 5,741.47	KB-Tubing Head Distance (ft)	Spud Date 3/10/2006 21:00	Rig Release Date 4/2/2006 00:00	PSTD (All) (ftKB)	Total Depth All (TVD) (ftKB)

**Most Recent Job**

Job Category Completion	Primary Job Type Recompletion	Secondary Job Type Re/Completions	Start Date 1/24/2008	End Date 2/1/2008
----------------------------	----------------------------------	--------------------------------------	-------------------------	----------------------

**TD: 9,377.0**      Directional - Original Hole - Initial Migration, 1/1/2020





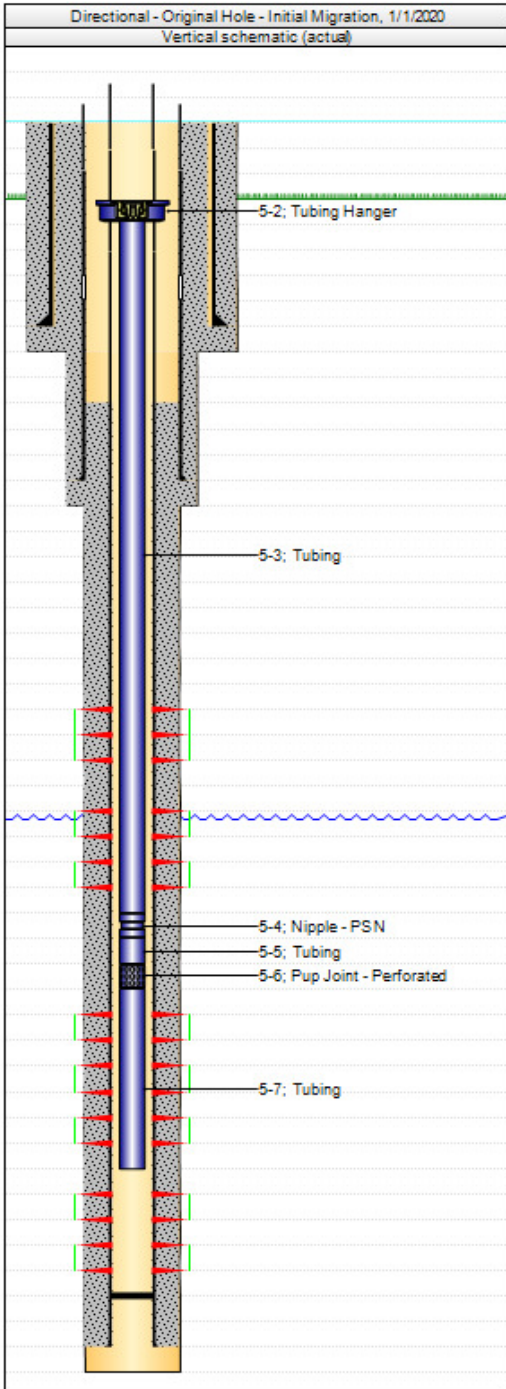
## Downhole Well Profile

**Well Name: N Parachute WF07B I25 596**

API/UWI 05045107680000	Surface Legal Location	Field Name Wildcat	License #	State/Province CO	Well Configuration Type Directional
Original KB Elevation (ft) 5,741.47	KB-Tubing Head Distance (ft)	Spud Date 3/10/2006 21:00	Rig Release Date 4/2/2006 00:00	PSTD (All) (ftKB) Original Hole - Initial Migration - 9,312.0	Total Depth All (TVD) (ftKB)

**Wellheads**

Type
------



Casing Strings					
Csg Des	OD (in)	Wt/Len (lb/ft)	Grade	Top Thread	Set Depth (ftKB)
Conductor	16				72.0
Surface	9 5/8	36.00	J55	LT&C	2,529.0
Production	4 1/2	11.60	I-80	LT&C	9,356.0

Perforations			
Date	Top (ftKB)	Btm (ftKB)	Zone
3/15/2007	5,953.0	6,303.0	Original Migration, Original Hole - Initial Migration
3/8/2007	6,349.0	6,633.0	Original Migration, Original Hole - Initial Migration
5/4/2006	6,781.0	7,153.0	Original Migration, Original Hole - Initial Migration
5/2/2006	7,287.0	7,485.0	Original Migration, Original Hole - Initial Migration
4/28/2006	7,681.0	7,918.0	Original Migration, Original Hole - Initial Migration
4/28/2006	8,156.0	8,439.0	Original Migration, Original Hole - Initial Migration
4/27/2006	8,659.0	8,816.0	Original Migration, Original Hole - Initial Migration
4/25/2006	8,903.0	9,212.0	Original Migration, Original Hole - Initial Migration

Tubing Strings							
Tubing Description	Run Date	String Length (ft)	Set Depth (ftKB)				
Tubing from Migration	1/25/2011	8,522.23	8,522.0				
Item Des	Jts	Make	Model	OD (in)	Wt (lb/ft)	Grade	Len (ft)
KB							17.00
Tubing Hanger				7 1/16			0.80
Tubing	228			2 3/8		L-80	7,201.58
Nipple - PSN	1			2 3/8			1.10
Tubing	1			2 3/8		L-80	30.58
Pup Joint - Perforated	1			2 3/8			10.05
Tubing	40			2 3/8		L-80	1,261.12

Rod Strings							
Rod Description	Run Date	String Length (ft)	Set Depth (ftKB)				
Item Des	Jts	Make	Model	OD (in)	Wt (lb/ft)	Grade	Len (ft)