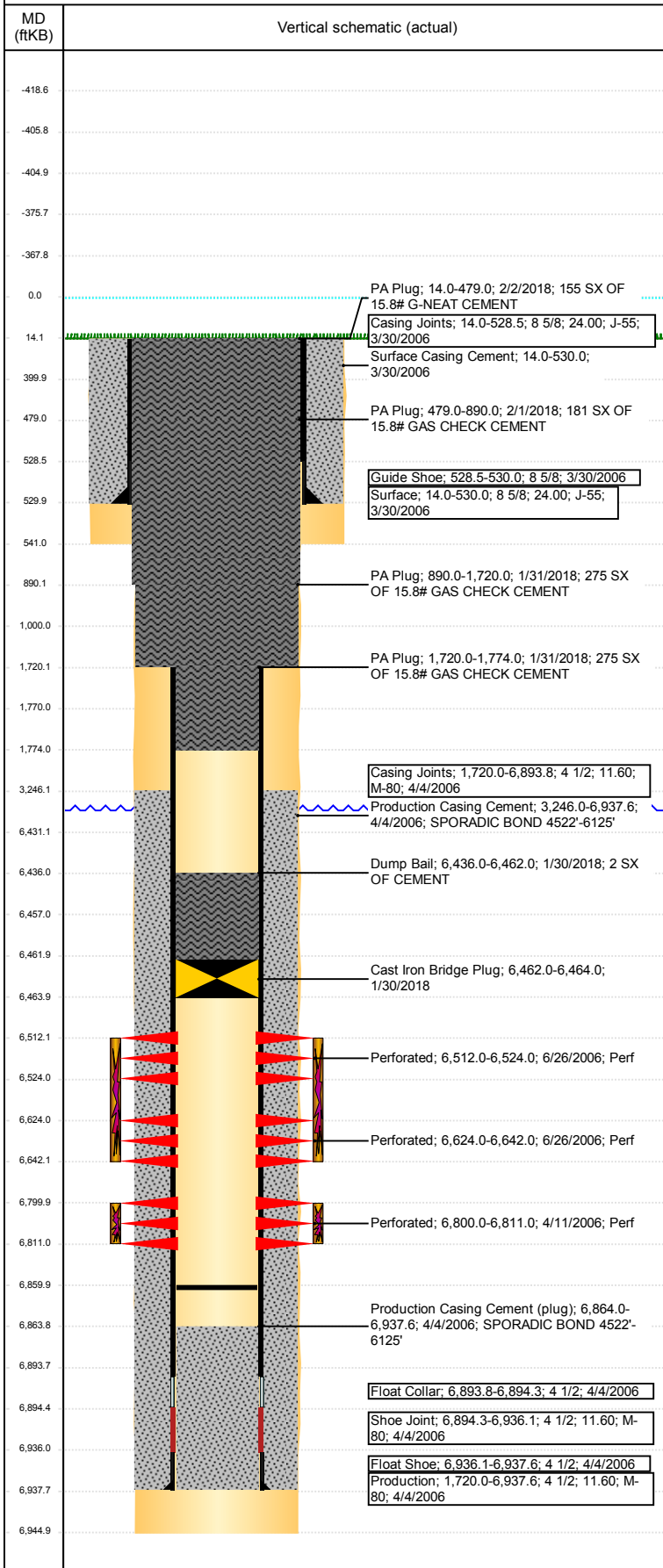


Wellbore Schematic Input Report

Well Name: FOSS 42-23

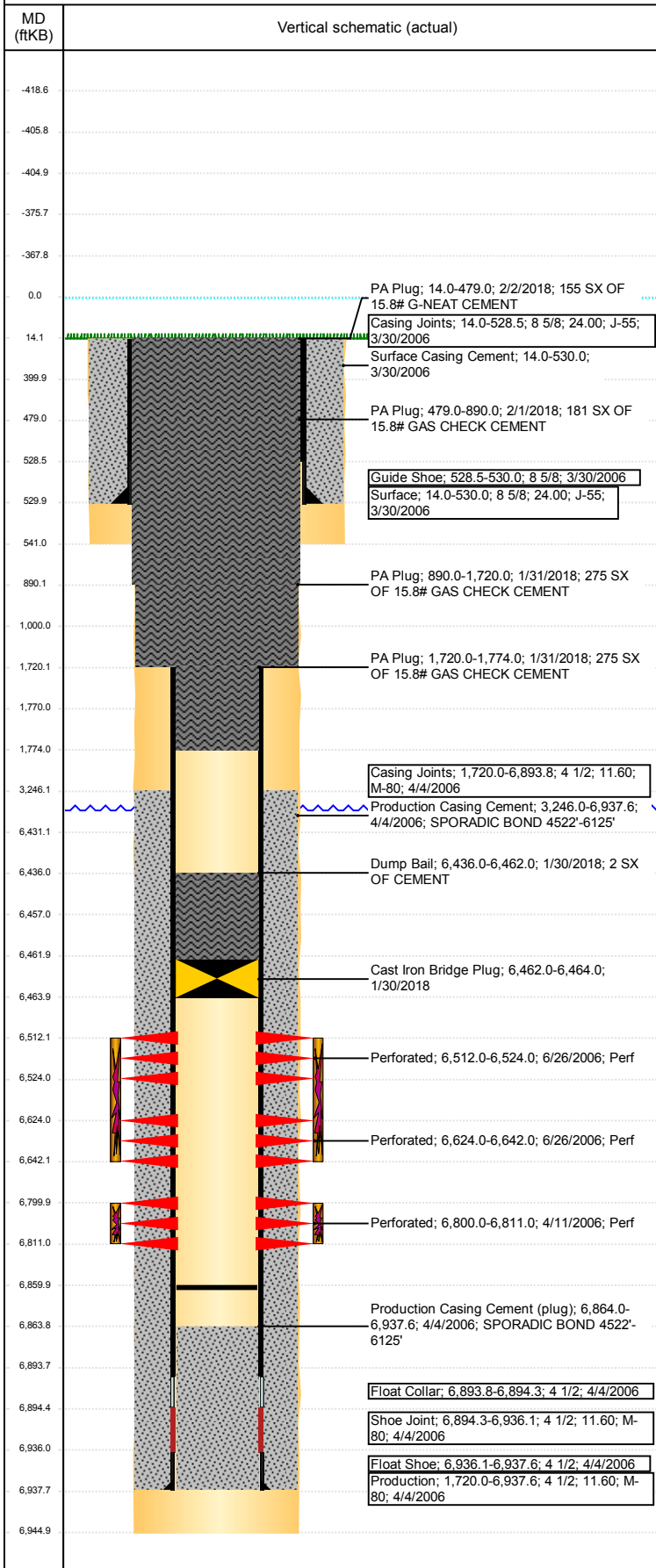
VERTICAL - ORIGINAL HOLE, 4/23/2018 4:16:43 PM



Well Header							
API 05-123-23549		Well Report Center 422125175		Well Configuration Type VERTICAL			
Original KB Elevation (ft) 4,671		KB - GL / MSL (ftKB) 14.00		Spud Date 3/29/2006		P & A Date 2/2/2018	
Production Route Watt - B3-06			Well Production Status PA			SoRT Ignore Yes	
Directions To Well 66 & 59 NORTH .5 WEST .2 NORTHWEST 300' INTO				Actual Latitude (°) 40.47307125		Actual Longitude (°) -104.51083716	
Comment PUSH FP TO 6860. PROD CSG SET DEPTH DISCREPANCY: DRL RPT=6951', ST CPM RPT=6945'. TD=6945', CSG TLY=6937.6'							
Congressional Location							
Quarter 3 SE	Quarter 4 NE	Section 23	Township 6	Twnshp N/S Dir N	Range 64	Range E/W Dir W	
Rig Operator							
Rig Operator GEORGE JACKSON, RIG OPERATOR							
Plug Back Total Depths							
Date	Depth (ftKB)	Method			Com		
10/24/2006	6,860.0	TAG			CLEAN OUT		
Wellbore Sections							
Section Des		Size (in)		Act Top, MD (ftKB)		Act Btm, MD (ftKB)	
SURFACE		12 1/4		14		541	
PRODUCTION		7 7/8		541		6,945	
Zone Statuses							
Zone Name		Status Date			Status		
NIOBRARA		2/2/2018			P&A		
CODELL		2/2/2018			P&A		
Casing Strings							
Surface, 530.0ftKB							
Casing Description Surface	Run Date 3/30/2006	OD (in) 8 5/8	Wt/Len (l... 24.00	Grade J-55	Top, MD (ft... 14.0	MD (ftKB) 530.0	
Production, 6,937.6ftKB							
Casing Description Production	Run Date 4/4/2006	OD (in) 4 1/2	Wt/Len (l... 11.60	Grade M-80	Top, MD (ft... 14.0	MD (ftKB) 6,937.6	
Cement							
Des		Start Date		Top (ftKB)		Btm (ftKB)	
Surface Casing Cement		3/30/2006		14.0		530.0	
Production Casing Cement		4/4/2006		3,246.0		6,937.6	
Dump Bail		1/30/2018		6,436.0		6,462.0	
PA Plug		1/31/2018		1,720.0		1,774.0	
PA Plug		1/31/2018		890.0		1,720.0	
PA Plug		2/1/2018		479.0		890.0	
PA Plug		2/2/2018		14.0		479.0	
Proposed Cement							
Des				Top (ftKB)		Btm (ftKB)	
Dump Bail				6,431.0		6,457.0	
Stub Plug				1,720.0		1,770.0	
Stub Plug				1,000.0		1,720.0	
Shoe Plug				530.0		541.0	
Shoe Plug				541.0		1,000.0	
Shoe Plug				400.0		530.0	
PA Plug				14.0		400.0	
Tubing Strings							
Tubing Description Tubing	Run Date 10/25/2006	String... 2 3/8	ID (in) 2.00	Wt (lb/ft) 4.70	Grade J-55	Len (ft) 6,770.76	Set De...
Tubing Components							
Item Des	OD (in)	Wt (lb/ft)	Grade	Jts	Len (ft)	Btm (ftKB)	Btm (TVD) (ftKB)
Pup Joint	2 3/8	4.70	J-55	2	20.00	32.0	
Tubing	2 3/8	4.70	J-55	217	6,749.16	6,781.2	
Seating Nipple	2 3/8	1.10			0.60	6,781.8	
Notched collar	2 3/8				1.00	6,782.8	

Well Name: FOSS 42-23

VERTICAL - ORIGINAL HOLE, 4/23/2018 4:16:44 PM



Other In Hole				
Run Date	Des	OD (in)	Top (ftKB)	Btm (ftKB)
1/30/2018	Cast Iron Bridge Plug	3.99	6,462.0	6,464.0

Proposed Other In Hole				
Des	OD (in)	Top (ftKB)	Btm (ftKB)	
Cast Iron Bridge Plug	3.99	6,457.0	6,462.0	

Logs				
Date	Type	Top, MD (ftKB)	Btm, MD (ftKB)	
4/3/2006	COMPENSATED DENSITY	1,990.0	6,931.0	
4/3/2006	INDUCTION	530.0	6,951.0	
4/11/2006	CBL/CCL/GR	3,100.0	5,015.0	
4/11/2006	CBL/CCL/GR	4,990.0	6,862.0	
9/28/2015	GYRO	10.0	6,750.0	

Perforation Data				
Linked Zone	Sum of Entered Shot Total	Top (ftKB)	Btm (ftKB)	Date
NIOBRARA, ORIGINAL HOLE	72	6,512.00	6,524.00	6/26/2006
NIOBRARA, ORIGINAL HOLE	108	6,624.00	6,642.00	6/26/2006
CODELL, ORIGINAL HOLE	44	6,800.00	6,811.00	4/11/2006
Total (Sum)	224			

Job Supply Amounts				
Supply Item Des	Type	Uni...	Job Category	Total...
WATER - COMPLETION/RE COMP	PUBLIC	bbl	ABANDON	763.0
				653.0
				110.0

Daily Cost Breakdown by Category		
Sum of Field Est...	Cost Description	Note
25,509.88	Downhole	RIG 6
4,500.00	Downhole	C. SMITH
2,479.40	Downhole	TRUCKS FOR MOVE
1,300.08	Downhole	SHOOT DRAIN HOLE'S
5,488.25	Downhole	CIBP, DUMPBAIL.CUT CSG
30,366.27	Downhole	P&A CEMENT
6,654.00	Downhole	P&A TOOLS
0.00	Downhole	BASIN FLUID'S "SWEEPS"
1,960.00	Downhole	110 BBLS DISPOSAL
3,440.11	Downhole	FLUID TRUCKING
753.68	Downhole	TEST TBG
300.00	Downhole	PORTA POTTY
3,602.43	Downhole	TANK RENTAL
2,000.00	Downhole	LOCATION PREP
88,354.10		