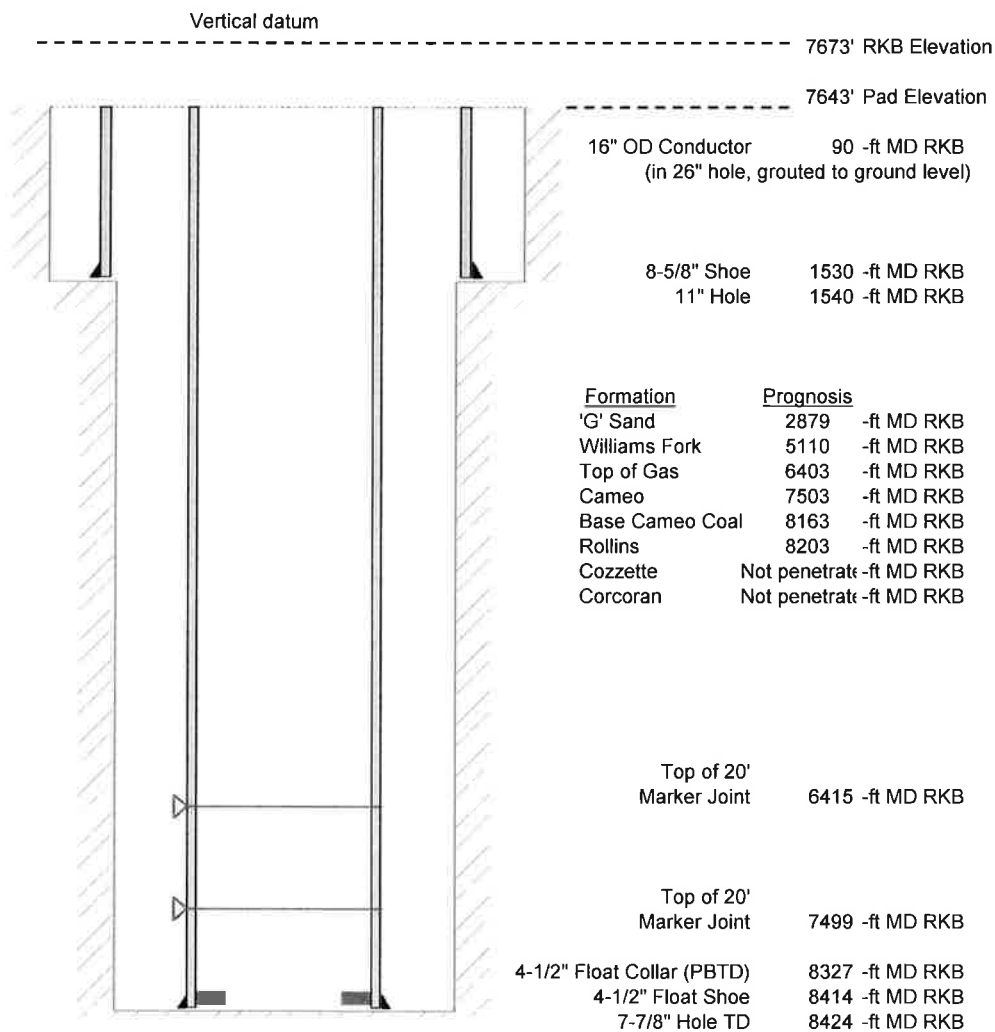


Laramie Energy, LLC
 Bruton Federal 31-01E
 Slot B-1
 H&P 522 (30-ft KB)

API # : 05-077-10475
 NW/4 SE/4 S30/T9S/R93W/6th PM
 Mesa County, CO
 Date of diagram : 2/9/2018



Cementing details

8-5/8" 24# Surface Csg	Lead	Tail
Density (ppg)	12.3	12.8
Volume (sx)	174	109
Yield (cf/sx)	2.45	2.18
Top (ft RKB)	0	610
Bottom (ft RKB)	610	1530
Returns (full or partial)	Full	Full

4-1/2" 11.6# Prod Csg	Lead	Tail
Density (ppg)	12.5	13.3
Volume (sx)	912	461
Yield (cf/sx)	1.94	1.73
Est Top (ft RKB)	70	5620
Est Bottom (ft RKB)	5620	8414
Returns (full or partial)	Full	Full

Displacement
8.3 ppg
129 bbls

Other Remarks : 30 bbls cement back on surface job. 3 bbls spacer back on production job.