



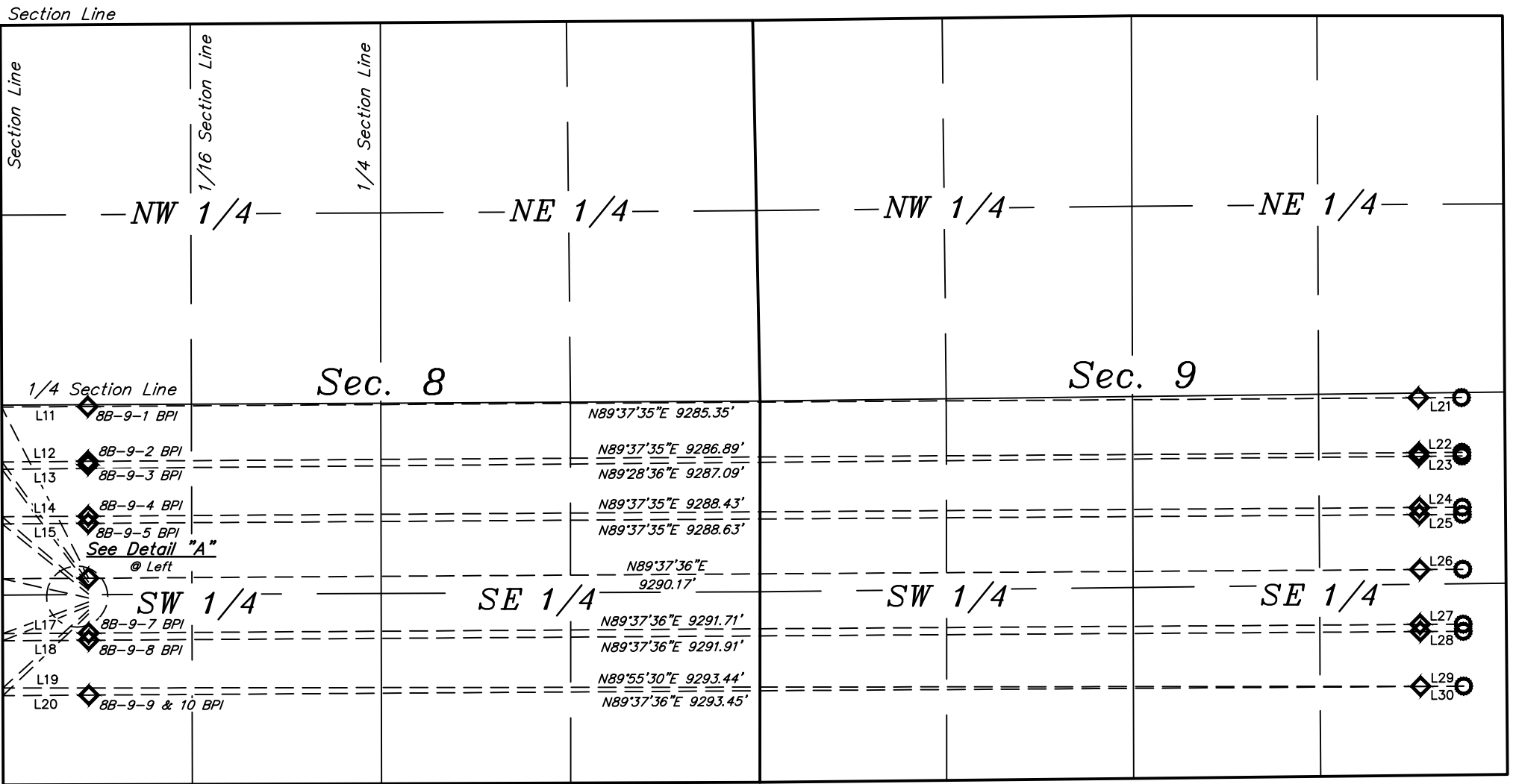
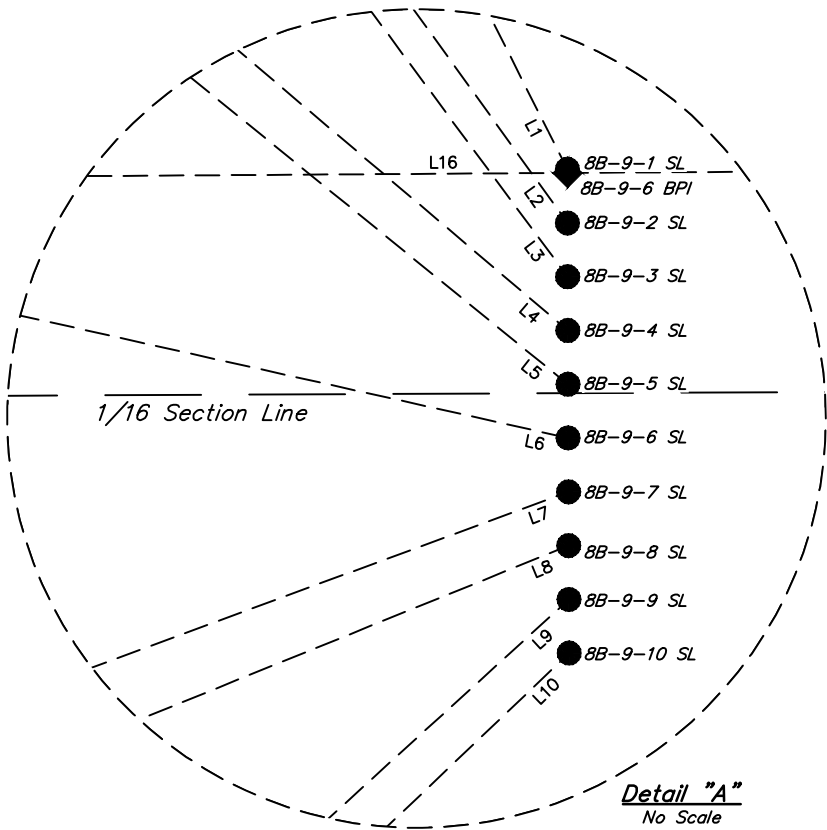
- LEGEND:**
- = PROPOSED WELLHEAD.
 - ◆ = PRODUCTION INTERVAL.
 - = TARGET BOTTOM HOLE.

LINE TABLE		
LINE	DIRECTION	LENGTH
L1	N26°52'06"W	1337.54'
L2	N35°44'04"W	1032.58'
L3	N36°30'29"W	1013.40'
L4	N49°39'23"W	789.59'
L5	N50°53'24"W	775.44'
L6	N77°24'24"W	615.08'
L7	S69°46'03"W	638.45'
L8	S67°55'54"W	646.26'
L9	S47°39'42"W	808.75'

LINE TABLE		
LINE	DIRECTION	LENGTH
L10	S46°22'12"W	825.82'
L11	N89°37'35"E	600.00'
L12	N89°37'35"E	600.00'
L13	N89°28'36"E	600.01'
L14	N89°37'35"E	600.00'
L15	N89°37'35"E	600.00'
L16	N89°37'36"E	600.00'
L17	N89°37'36"E	600.00'
L18	N89°37'36"E	600.00'

LINE TABLE		
LINE	DIRECTION	LENGTH
L19	N89°55'30"E	600.00'
L20	N89°37'36"E	600.00'
L21	N89°37'35"E	300.00'
L22	N89°37'35"E	300.00'
L23	N89°28'36"E	300.00'
L24	N89°37'35"E	300.00'
L25	N89°37'35"E	300.00'
L26	N89°37'36"E	300.00'
L27	N89°37'36"E	300.00'

LINE TABLE		
LINE	DIRECTION	LENGTH
L28	N89°37'36"E	300.00'
L29	N89°55'30"E	300.01'
L30	N89°37'36"E	300.00'



REV: 1 03-06-18 J.J. (BPI & EPI CHANGE)

NOTES:

BISON OIL & GAS II

TIMBRO 9-59 8B PAD
W 1/2 SW 1/4, SECTION 8, T9N, R59W, 6th P.M.
WELD COUNTY, COLORADO

SURVEYED BY	JONATHON BAYLIFF	01-03-18	SCALE
DRAWN BY	C.IVIE	02-22-18	1" = 1000'
MULTI-WELL PLAN			FIGURE #5



UELS, LLC
Corporate Office * 85 South 200 East
Vernal, UT 84078 * (435) 789-1017