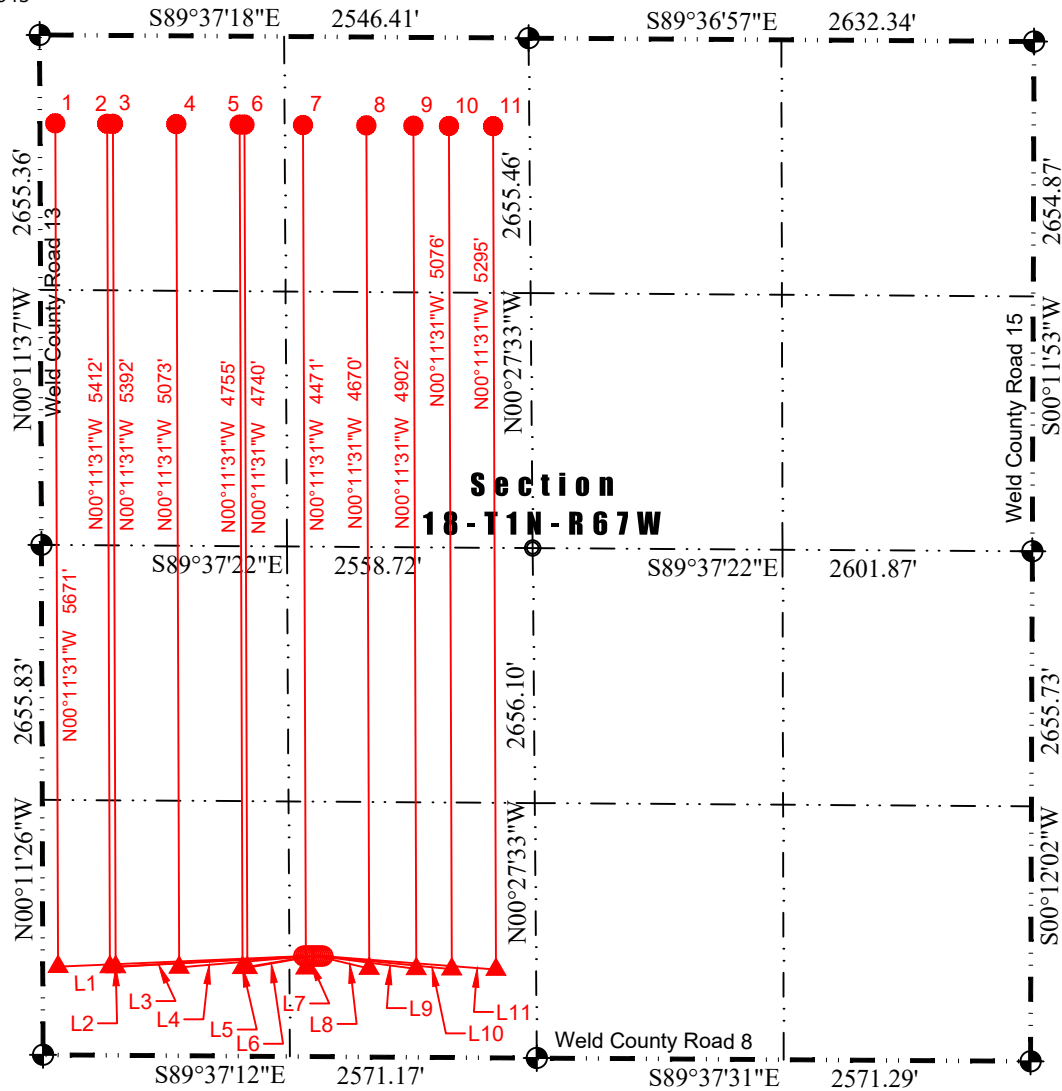




Washburn Land Surveying
www.WashburnSurveying.com
970-232-9645

MULTI-WELL PLAN HINGLEY 18H-N167

SECTION: 18
TOWNSHIP: 1N
RANGE: 67W
6TH P.M.
WELD COUNTY, CO

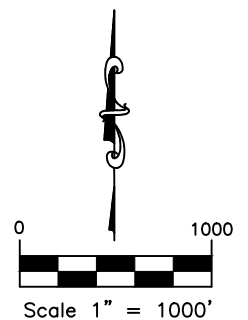


Line Table

| Line # | Length | Direction |
|--------|---------|---------------|
| L1 | 1280.11 | S87° 34' 08"W |
| L2 | 1020.49 | S86° 50' 58"W |
| L3 | 1000.53 | S86° 46' 30"W |
| L4 | 681.45 | S85° 04' 39"W |
| L5 | 4391.17 | N00° 11' 31"W |
| L6 | 349.27 | S79° 58' 13"W |
| L7 | 79.65 | S37° 53' 49"W |
| L8 | 278.78 | S76° 30' 31"E |
| L9 | 510.46 | S82° 29' 46"E |
| L10 | 684.47 | S84° 18' 28"E |
| L11 | 903.77 | S85° 35' 42"E |

LEGEND:

- ALIQUOT CORNER AS DESCRIBED
- SURFACE HOLE LOCATION (SHL)
- TOP PRODUCTION ZONE (TPZ)
- BOTTOM HOLE LOCATION (BHL)



DATE: 2/20/2018 SHEET 1 OF 3



Washburn Land Surveying
www.WashburnSurveying.com
970-232-9645

MULTI-WELL PLAN HINGLEY 18H-N167

SECTION: 18
TOWNSHIP: 1N
RANGE: 67W
6TH P.M.
WELD COUNTY, CO

| ID | WELL | SHL LAT | SHL LONG | FOOTAGES | | |
|----|---------------------|-----------|-------------|----------|----------|---------------|
| 1 | HINGLEY 3A-18H-N167 | 40.045389 | -104.937645 | 523 FNL | 1359 FWL | OF SECTION 18 |
| 2 | HINGLEY 3B-18H-N167 | 40.045389 | -104.937609 | 523 FNL | 1369 FWL | OF SECTION 18 |
| 3 | HINGLEY 3C-18H-N167 | 40.045388 | -104.937573 | 523 FNL | 1379 FWL | OF SECTION 18 |
| 4 | HINGLEY 3D-18H-N167 | 40.045388 | -104.937538 | 523 FNL | 1389 FWL | OF SECTION 18 |
| 5 | HINGLEY 3E-18H-N167 | 40.045388 | -104.937502 | 523 FNL | 1399 FWL | OF SECTION 18 |
| 6 | HINGLEY 3F-18H-N167 | 40.045388 | -104.937466 | 523 FNL | 1409 FWL | OF SECTION 18 |
| 7 | HINGLEY 3G-18H-N167 | 40.045388 | -104.937430 | 523 FNL | 1419 FWL | OF SECTION 18 |
| 8 | HINGLEY 3H-18H-N167 | 40.045388 | -104.937395 | 523 FNL | 1429 FWL | OF SECTION 18 |
| 9 | HINGLEY 3I-18H-N167 | 40.045387 | -104.937359 | 523 FNL | 1439 FWL | OF SECTION 18 |
| 10 | HINGLEY 3J-18H-N167 | 40.045387 | -104.937323 | 523 FNL | 1449 FWL | OF SECTION 18 |
| 11 | HINGLEY 3K-18H-N167 | 40.045387 | -104.937287 | 523 FNL | 1459 FWL | OF SECTION 18 |
| | | | | | | |
| ID | WELL | TPZ LAT | TPZ LONG | FOOTAGES | | |
| 1 | HINGLEY 3A-18H-N167 | 40.045262 | -104.942214 | 460 FSL | 80 FWL | OF SECTION 18 |
| 2 | HINGLEY 3B-18H-N167 | 40.045252 | -104.941250 | 460 FSL | 350 FWL | OF SECTION 18 |
| 3 | HINGLEY 3C-18H-N167 | 40.045251 | -104.941143 | 460 FSL | 380 FWL | OF SECTION 18 |
| 4 | HINGLEY 3D-18H-N167 | 40.045240 | -104.939964 | 460 FSL | 710 FWL | OF SECTION 18 |
| 5 | HINGLEY 3E-18H-N167 | 40.045228 | -104.938785 | 460 FSL | 1040 FWL | OF SECTION 18 |
| 6 | HINGLEY 3F-18H-N167 | 40.045227 | -104.938696 | 460 FSL | 1065 FWL | OF SECTION 18 |
| 7 | HINGLEY 3G-18H-N167 | 40.045216 | -104.937607 | 460 FSL | 1370 FWL | OF SECTION 18 |
| 8 | HINGLEY 3H-18H-N167 | 40.045204 | -104.936428 | 460 FSL | 1700 FWL | OF SECTION 18 |
| 9 | HINGLEY 3I-18H-N167 | 40.045196 | -104.935553 | 460 FSL | 1945 FWL | OF SECTION 18 |
| 10 | HINGLEY 3J-18H-N167 | 40.045189 | -104.934892 | 460 FSL | 2130 FWL | OF SECTION 18 |
| 11 | HINGLEY 3K-18H-N167 | 40.045181 | -104.934071 | 460 FSL | 2360 FWL | OF SECTION 18 |
| | | | | | | |
| ID | WELL | BHL LAT | BHL LONG | FOOTAGES | | |
| 1 | HINGLEY 3A-18H-N167 | 40.057316 | -104.942168 | 460 FNL | 80 FWL | OF SECTION 18 |
| 2 | HINGLEY 3B-18H-N167 | 40.057307 | -104.941203 | 460 FNL | 350 FWL | OF SECTION 18 |
| 3 | HINGLEY 3C-18H-N167 | 40.057306 | -104.941096 | 460 FNL | 380 FWL | OF SECTION 18 |
| 4 | HINGLEY 3D-18H-N167 | 40.057294 | -104.939917 | 460 FNL | 710 FWL | OF SECTION 18 |
| 5 | HINGLEY 3E-18H-N167 | 40.057282 | -104.938739 | 460 FNL | 1040 FWL | OF SECTION 18 |
| 6 | HINGLEY 3F-18H-N167 | 40.057281 | -104.938649 | 460 FNL | 1065 FWL | OF SECTION 18 |
| 7 | HINGLEY 3G-18H-N167 | 40.057271 | -104.937560 | 460 FNL | 1370 FWL | OF SECTION 18 |
| 8 | HINGLEY 3H-18H-N167 | 40.057259 | -104.936381 | 460 FNL | 1700 FWL | OF SECTION 18 |
| 9 | HINGLEY 3I-18H-N167 | 40.057250 | -104.935506 | 460 FNL | 1945 FWL | OF SECTION 18 |
| 10 | HINGLEY 3J-18H-N167 | 40.057244 | -104.934845 | 460 FNL | 2130 FWL | OF SECTION 18 |
| 11 | HINGLEY 3K-18H-N167 | 40.057235 | -104.934023 | 460 FNL | 2360 FWL | OF SECTION 18 |

DATE: 2/20/2018
SHEET 2 OF 3



Washburn Land Surveying
www.WashburnSurveying.com
970-232-9645

MULTI-WELL PLAN HINGLEY 18H-N167

SECTION: 18
TOWNSHIP: 1N
RANGE: 67W
6TH P.M.
WELD COUNTY, CO



LEGEND:

- ALIQUOT CORNER AS DESCRIBED
- SURFACE HOLE LOCATION (SHL)
- TOP PRODUCTION ZONE (TPZ)
- BOTTOM HOLE LOCATION (BHL)

