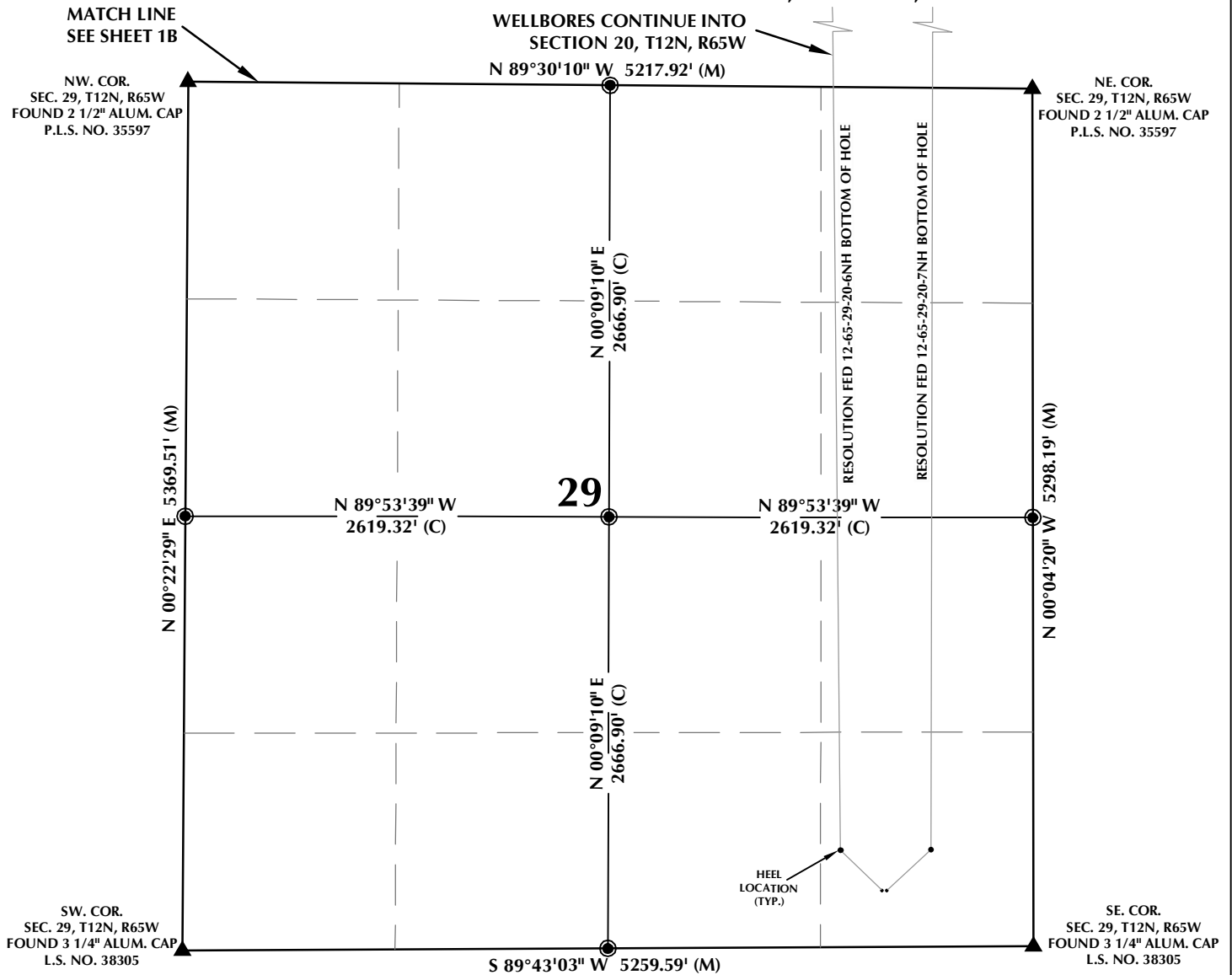


MULTI-WELL PLAN SECTION 29, T12N, R65W

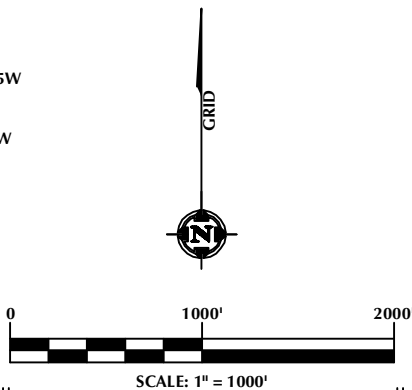


WELL NOTES:

RESOLUTION FED 12-65-29-20-6NH
 SURFACE: 350' FSL, 934' FEL, SEC. 29, T12N, R65W
 BOTTOM HOLE: 221' FNL, 1270' FEL, SEC. 20, T12N, R65W
 RESOLUTION FED 12-65-29-20-7NH
 SURFACE: 350' FSL, 904' FEL, SEC. 29, T12N, R65W
 BOTTOM HOLE: 198' FNL, 600' FEL, SEC. 20, T12N, R65W

NOTES:

- ▲ INDICATES SECTION CORNER.
- INDICATES CALCULATED CORNER.
- BASIS OF BEARING DERIVED FROM COLORADO COORDINATE SYSTEM OF 1983 NORTH ZONE.
- ALL MEASURED DISTANCES ARE GRID.
- COMBINED SCALE FACTOR: .99975846 CALCULATED FROM THE SE. CORNER OF SECTION 20, T12N, R65W.
- WELL FOOTAGES ARE MEASURED AT RIGHT ANGLES TO THE SECTION LINES.



WELL PAD - RESOLUTION FED 12-65-29-20-7NH

**MULTI-WELL PLAN
 RESOLUTION FED 12-65-29-20-6NH &
 RESOLUTION FED 12-65-29-20-7NH
 LOCATED IN SECTIONS 29 & 20
 T12N, R65W, 6TH P.M.
 WELD COUNTY, COLORADO**

**Anadarko E&P
 Onshore LLC**
 1099 18th Street
 Denver, Colorado 80202



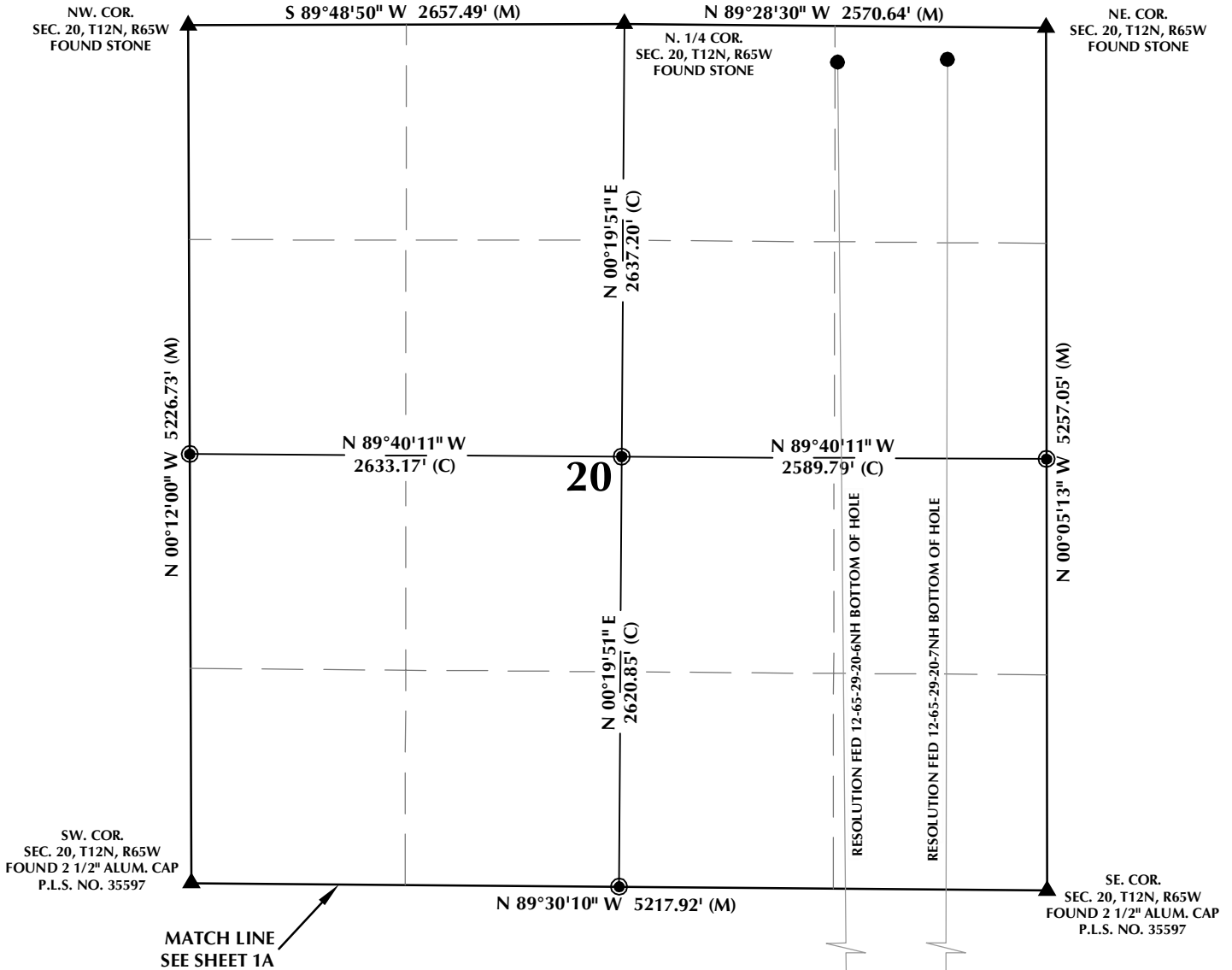
CONSULTING, LLC

SHERIDAN OFFICE
 1095 Saberton Avenue
 Sheridan, Wyoming 82801
 Phone 307-674-0609

LOVELAND OFFICE
 1635 Foxtrail Drive, Suite 204
 Loveland, Colorado 80538
 Phone 970-776-4331

DRAFTED BY:	LMO	CHECKED BY:	RKF	SHEET NO:
DATE DRAFTED:	1/26/15	DATE SURVEYED:	12/10/14	1A
REVISED:	4/6/18	FILE NAME:	14-52	1A OF 1

MULTI-WELL PLAN SECTION 20, T12N, R65W



WELL NOTES:

RESOLUTION FED 12-65-29-20-6NH
SURFACE: 350' FSL, 934' FEL, SEC. 29, T12N, R65W
BOTTOM HOLE: 221' FNL, 1270' FEL, SEC. 20, T12N, R65W
RESOLUTION FED 12-65-29-20-7NH
SURFACE: 350' FSL, 904' FEL, SEC. 29, T12N, R65W
BOTTOM HOLE: 198' FNL, 600' FEL, SEC. 20, T12N, R65W

NOTES:

- ▲ INDICATES SECTION CORNER.
- INDICATES CALCULATED CORNER.
- BASIS OF BEARING DERIVED FROM COLORADO COORDINATE SYSTEM OF 1983 NORTH ZONE.
- ALL MEASURED DISTANCES ARE GRID.
- COMBINED SCALE FACTOR: .99975846 CALCULATED FROM THE SE. CORNER OF SECTION 20, T12N, R65W.
- WELL FOOTAGES ARE MEASURED AT RIGHT ANGLES TO THE SECTION LINES.



SCALE: 1" = 1000'

WELL PAD - RESOLUTION FED 12-65-29-20-7NH

MULTI-WELL PLAN
RESOLUTION FED 12-65-29-20-6NH &
RESOLUTION FED 12-65-29-20-7NH
LOCATED IN SECTIONS 29 & 20
T12N, R65W, 6TH P.M.
WELD COUNTY, COLORADO

Anadarko E&P
Onshore LLC
1099 18th Street
Denver, Colorado 80202



CONSULTING, LLC

SHERIDAN OFFICE
1095 Saberton Avenue
Sheridan, Wyoming 82801
Phone 307-674-0609

LOVELAND OFFICE
1635 Foxtrail Drive, Suite 204
Loveland, Colorado 80538
Phone 970-776-4331

DRAFTED BY:	LMO	CHECKED BY:	RKF	SHEET NO:
DATE DRAFTED:	1/26/15	DATE SURVEYED:	12/10/14	1B
REVISED:	4/6/18	FILE NAME:	14-52	1B OF 1