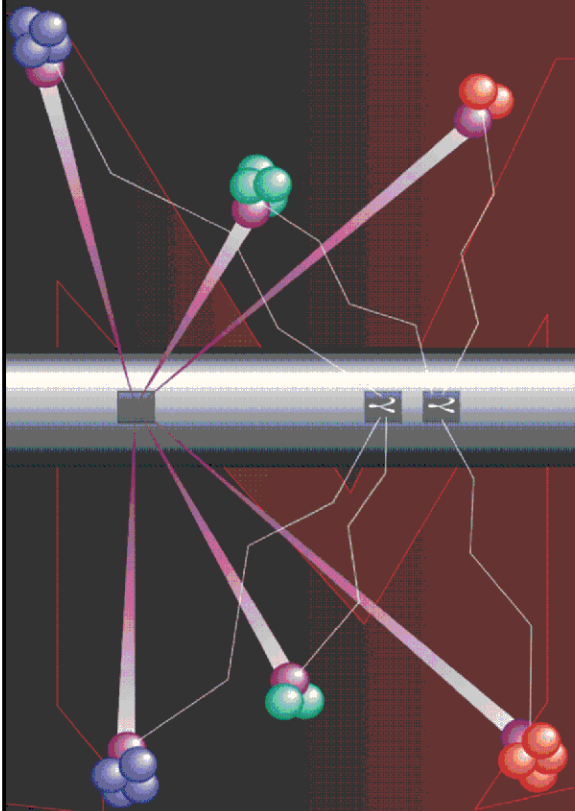


Pulsed Neutron Formation Evaluation



RESERVOIR PERFORMANCE MONITOR NEO Neutron Emulated Openhole

COMPANY LARAMIE ENERGY

WELL BRUTON FEDERAL 30-18W

FIELD VEGA

COUNTY MESA STATE COLORADO

LOCATION:

SEE REMARKS

SEC 30 TWP 9S RGE 93W

ELEVATIONS:

KB 7673 FT DF GL 7643 FT

DATE 5-APR-2018 ECC 133065

IN MAKING INTERPRETATIONS OF LOGS OUR EMPLOYEES WILL GIVE THE CUSTOMER THE BENEFIT OF THEIR BEST JUDGEMENT. BUT SINCE ALL INTERPRETATIONS ARE OPINIONS BASED ON INFERENCES FROM ELECTRICAL OR OTHER MEASUREMENTS, WE CANNOT, AND WE DO NOT GUARANTEE THE ACCURACY OR CORRECTNESS OF ANY INTERPRETATION. WE SHALL NOT BE LIABLE OR RESPONSIBLE FOR ANY LOSS, COST, DAMAGES, OR EXPENSES WHATSOEVER INCURRED OR SUSTAINED BY THE CUSTOMER RESULTING FROM ANY INTERPRETATION MADE BY ANY OF OUR EMPLOYEES.

COMPUTATION PARAMETERS

COMPUTATION	LOGS USED: <u>RPM-C</u>		PROGRAM: <u>NEO</u>
	CENTER: <u>HOUSTON</u>	LOG ANALYST: <u>KIMBERLY ELLSWORTH</u>	DATE: <u>5-APR-2018</u>
FIELD DATA	LOCATION: <u>GRAND JUNCTION</u>	ENGINEER: <u>T. NEWELL</u>	DATE: <u>2-APR-2018</u>

FROM	TO								
<u>2657 FT</u>	<u>8177 FT</u>								

REMARKS

LOCATION: SHL: 2631' FSL & 1863' FEL
BHL: 908' FSL & 1307' FWL

TRAINING WELL:
BRUTON 30-14E

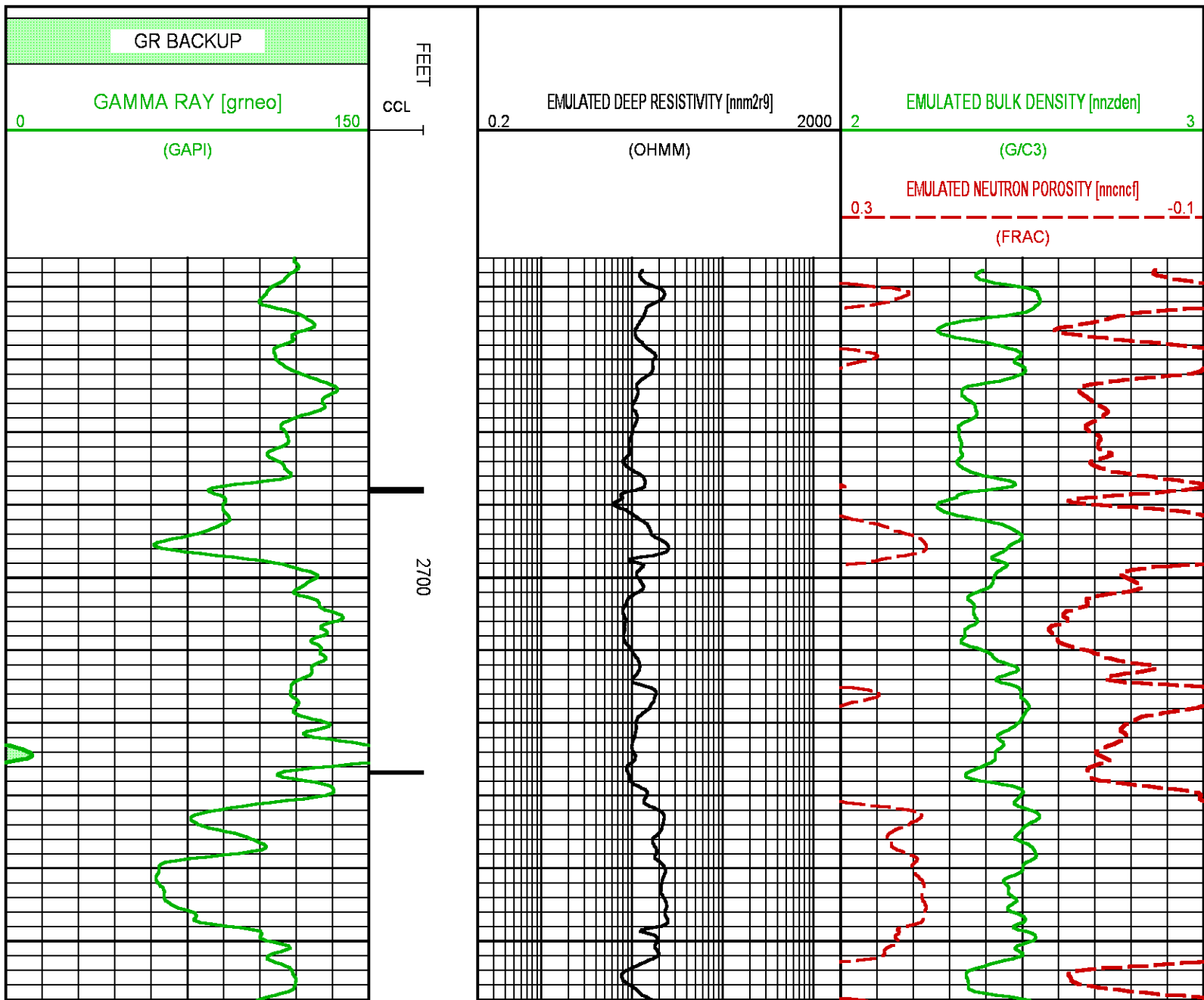
ANY ERRORS IN THE TRAINING WELL OPENHOLE DATA CAN PERETUATE THROUGH AS ERROR IN THE EMULATED RESULTS

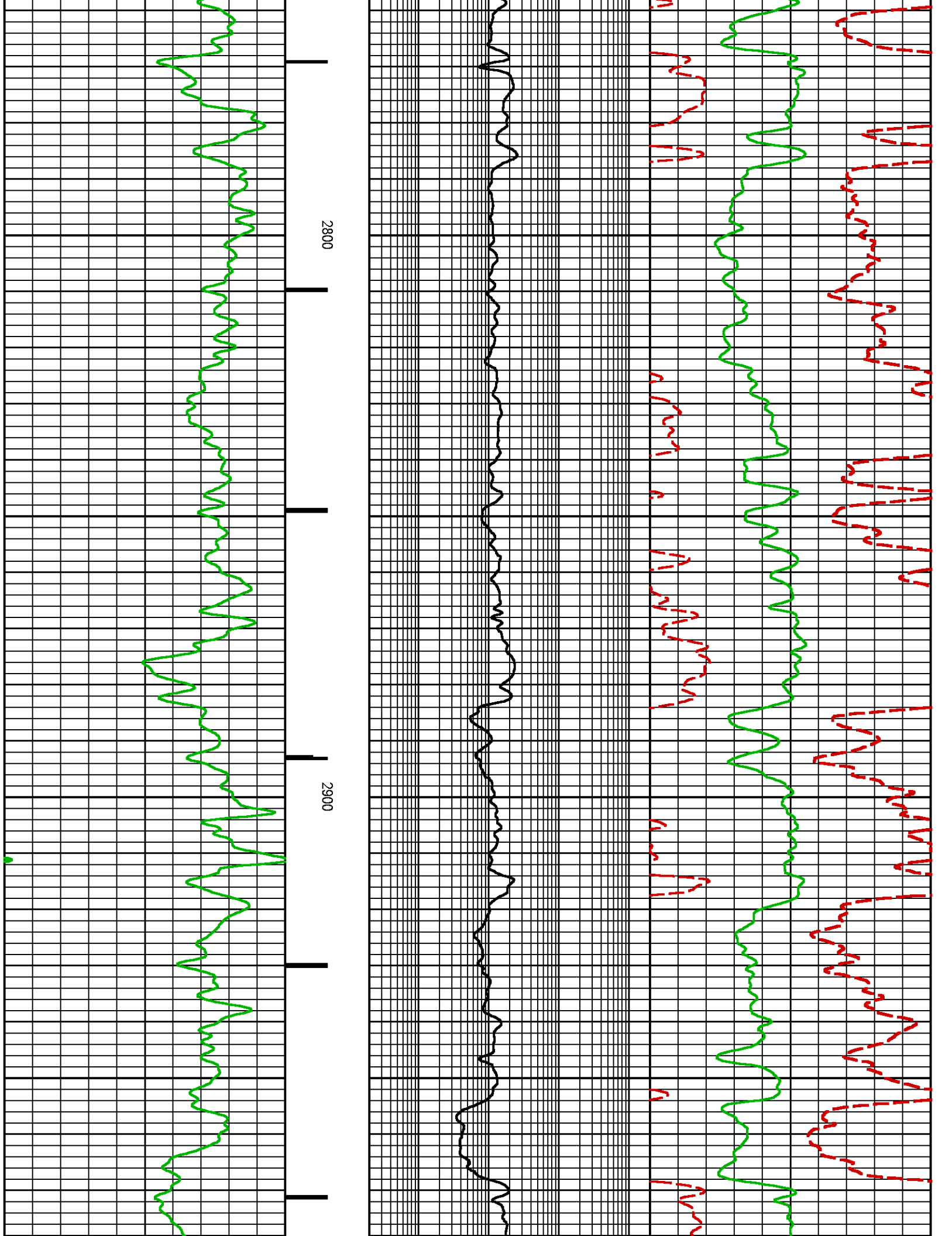
BOND LOG IS DEPTH REFERENCE LOG

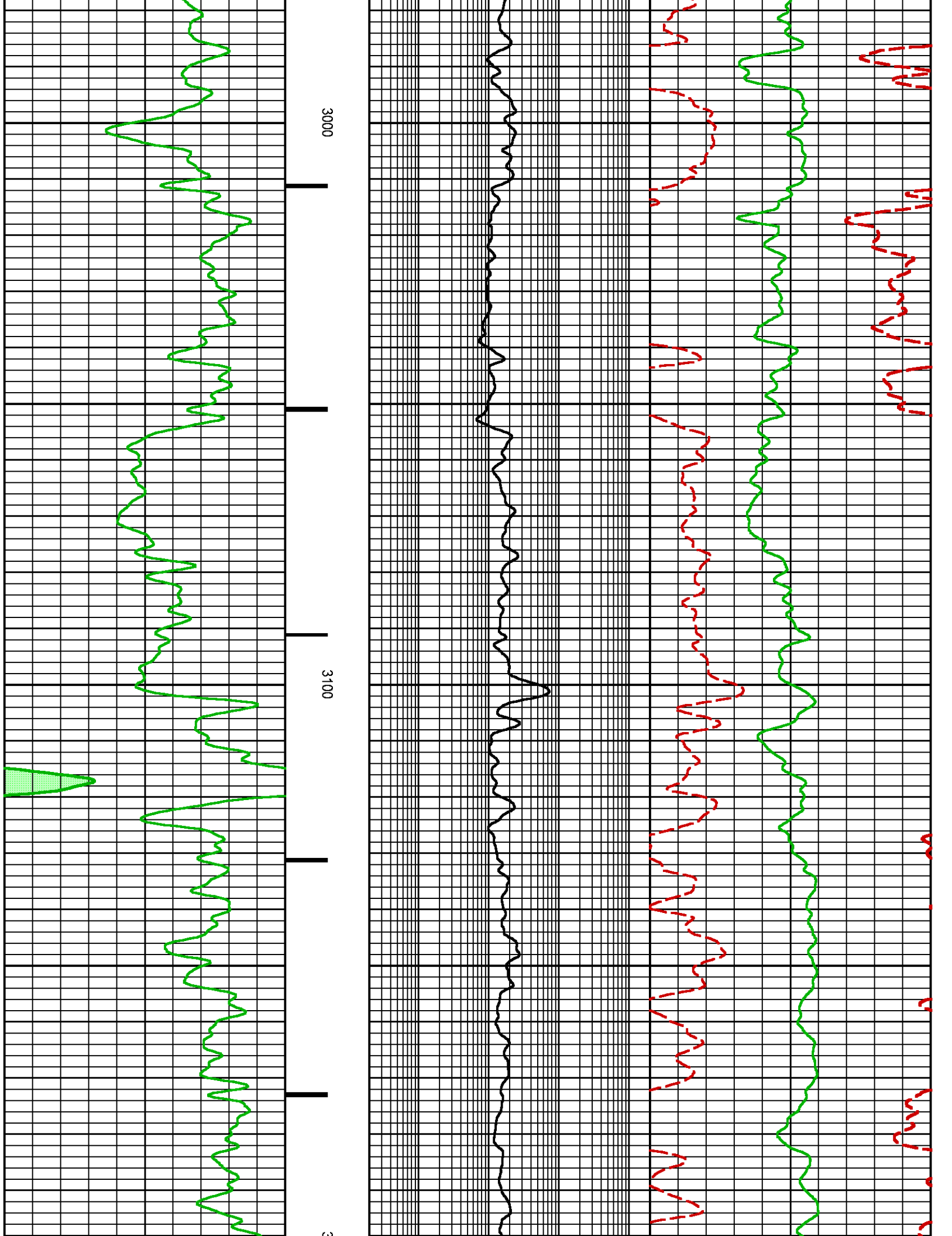
NEO RESULTS FOR BRUTON FEDERAL 30-18W (G-SAND)

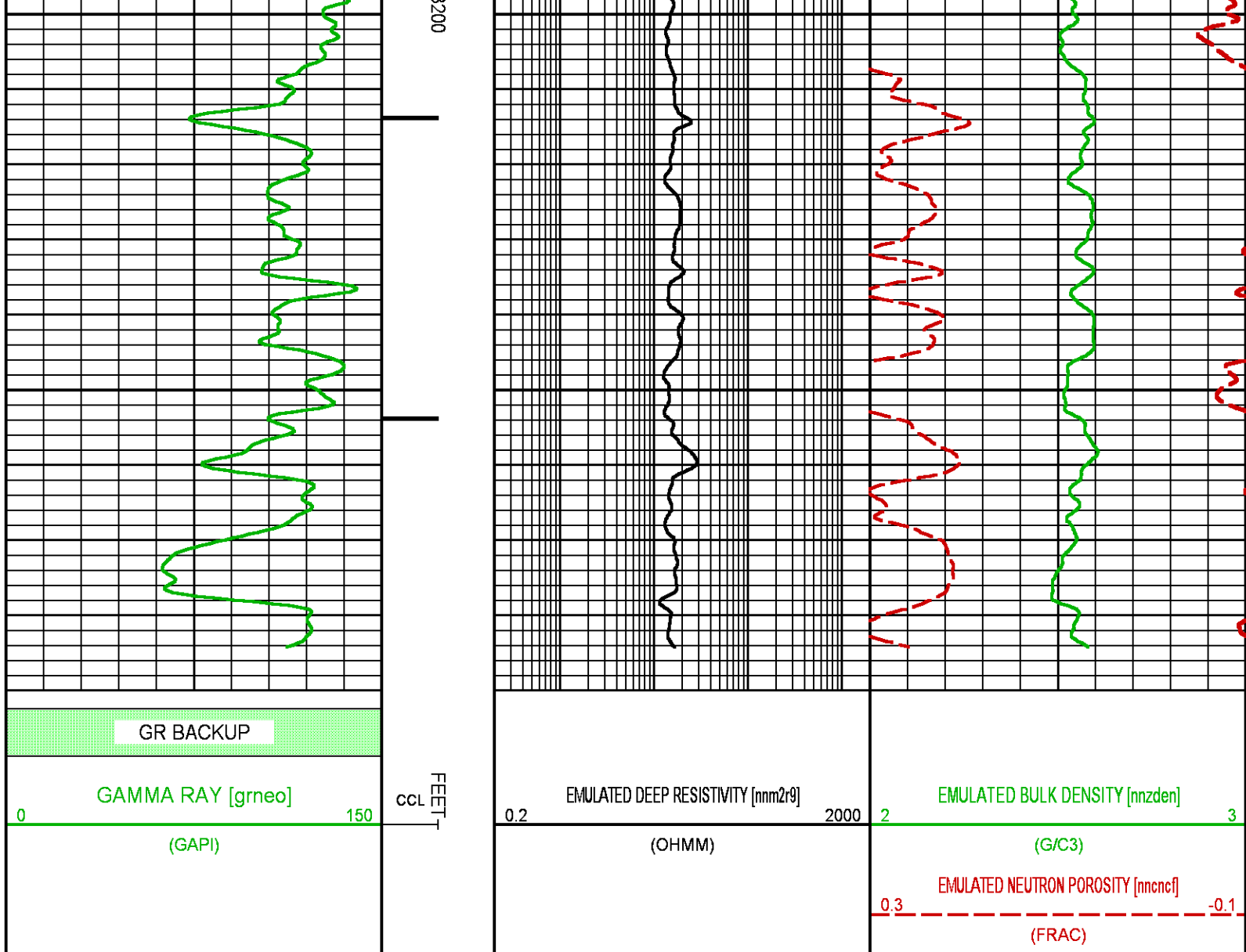
Project : NA
User : ellskima
Presentation : BHI3BKZH12:C:\Ape_Projects\laramie_bruton_30_18w\NEO_PRESENTATION_LARAMIE_G-Sand.pdf [5"/100' Scale]
Plot Interval : 2656 - 3290 Feet

Data File 1 : F1 : BHI3BKZH12:C:\Ape_Projects\laramie_bruton_30_18w\Merged_Set_Final.xtf
Created On : N/A
Company : LARAMIE ENERGY LLC
Well : BRUTON FEDERAL 30-18W
Field : VEGA
File Interval : 2656 - 8176 Feet
OCT : NA



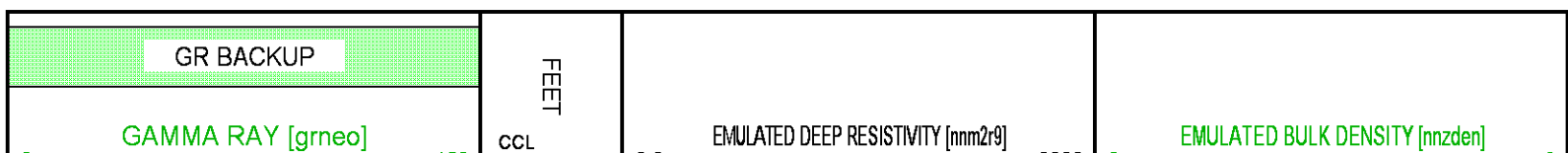


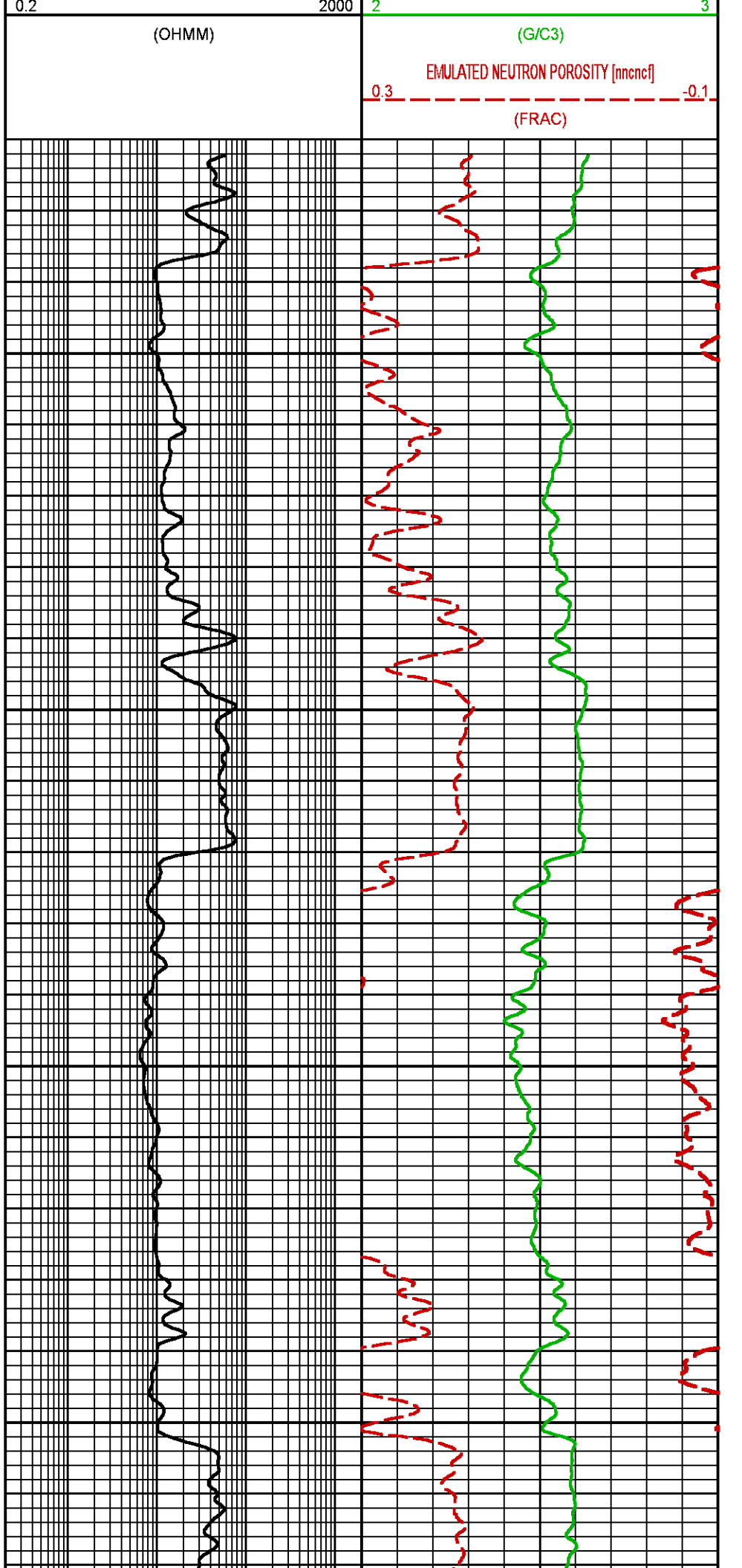
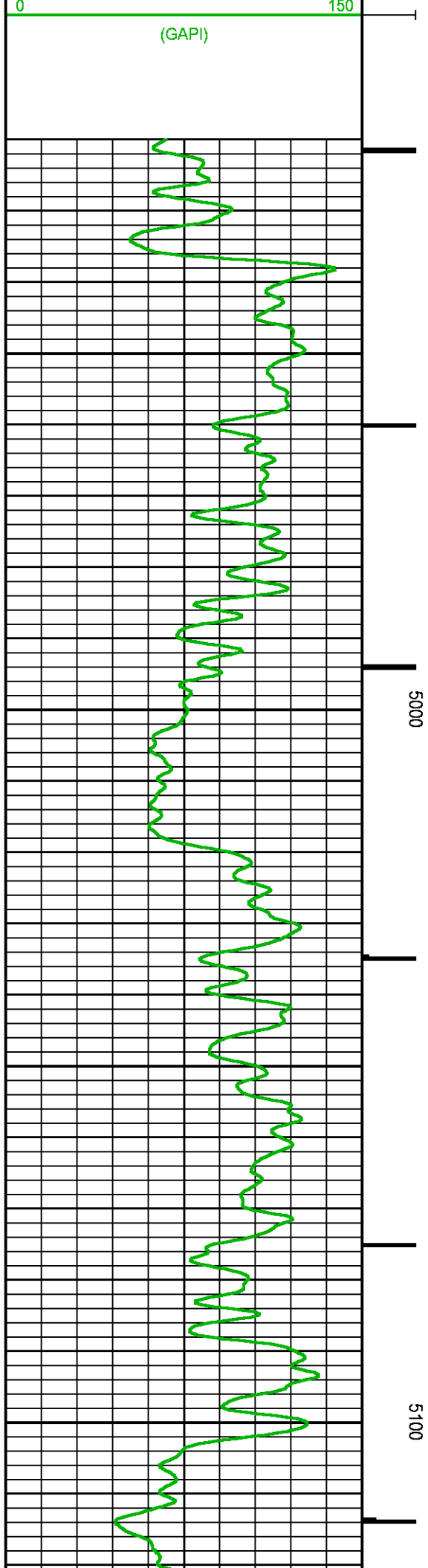


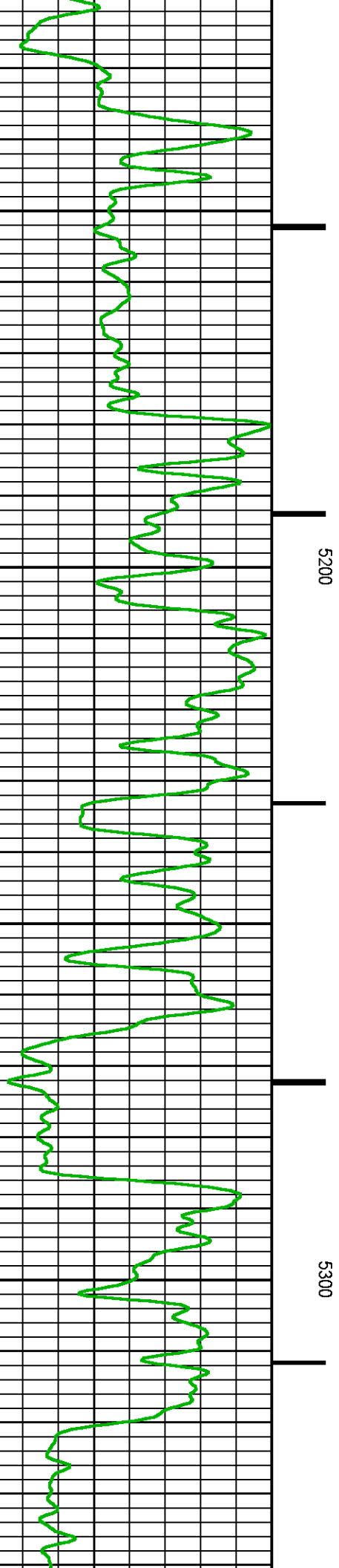
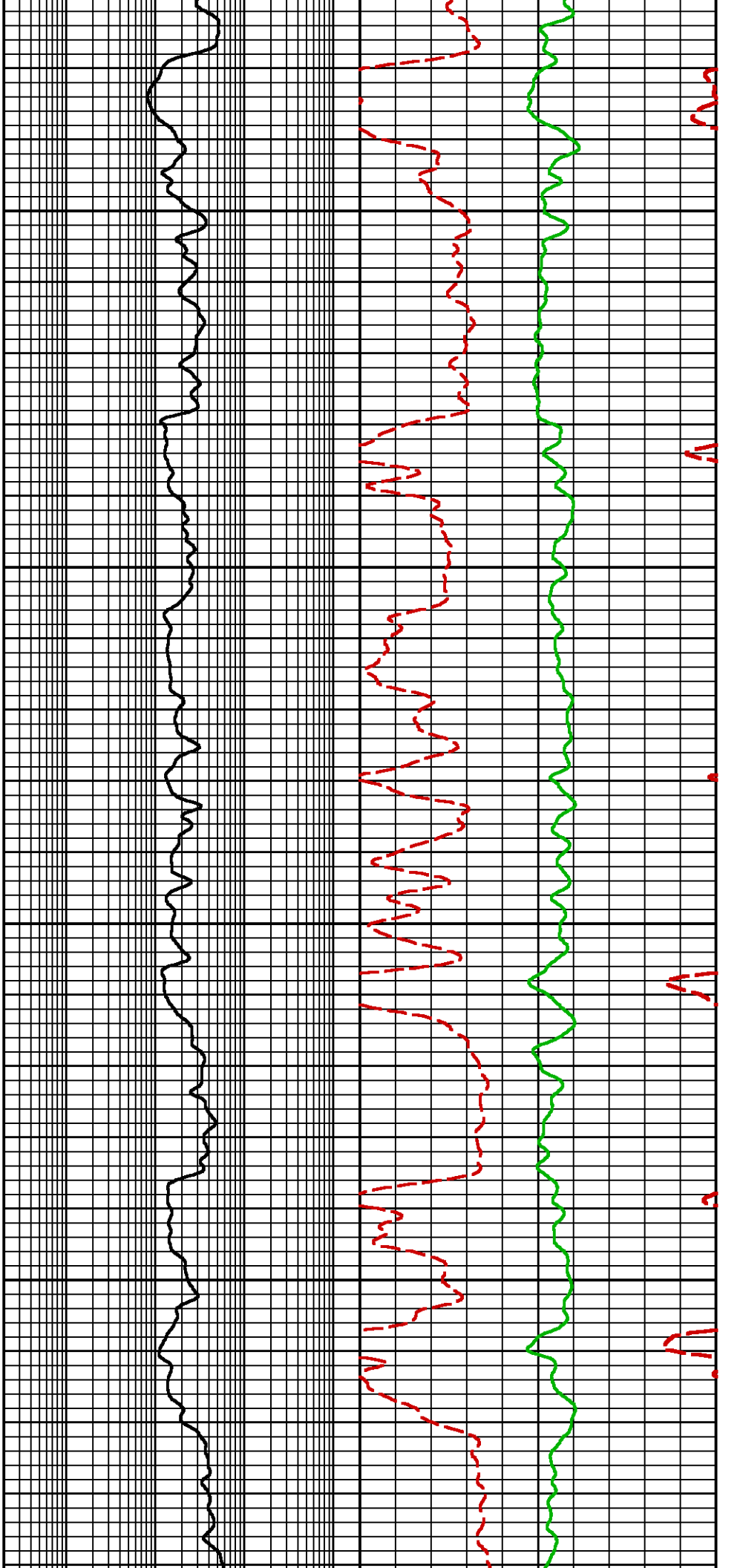


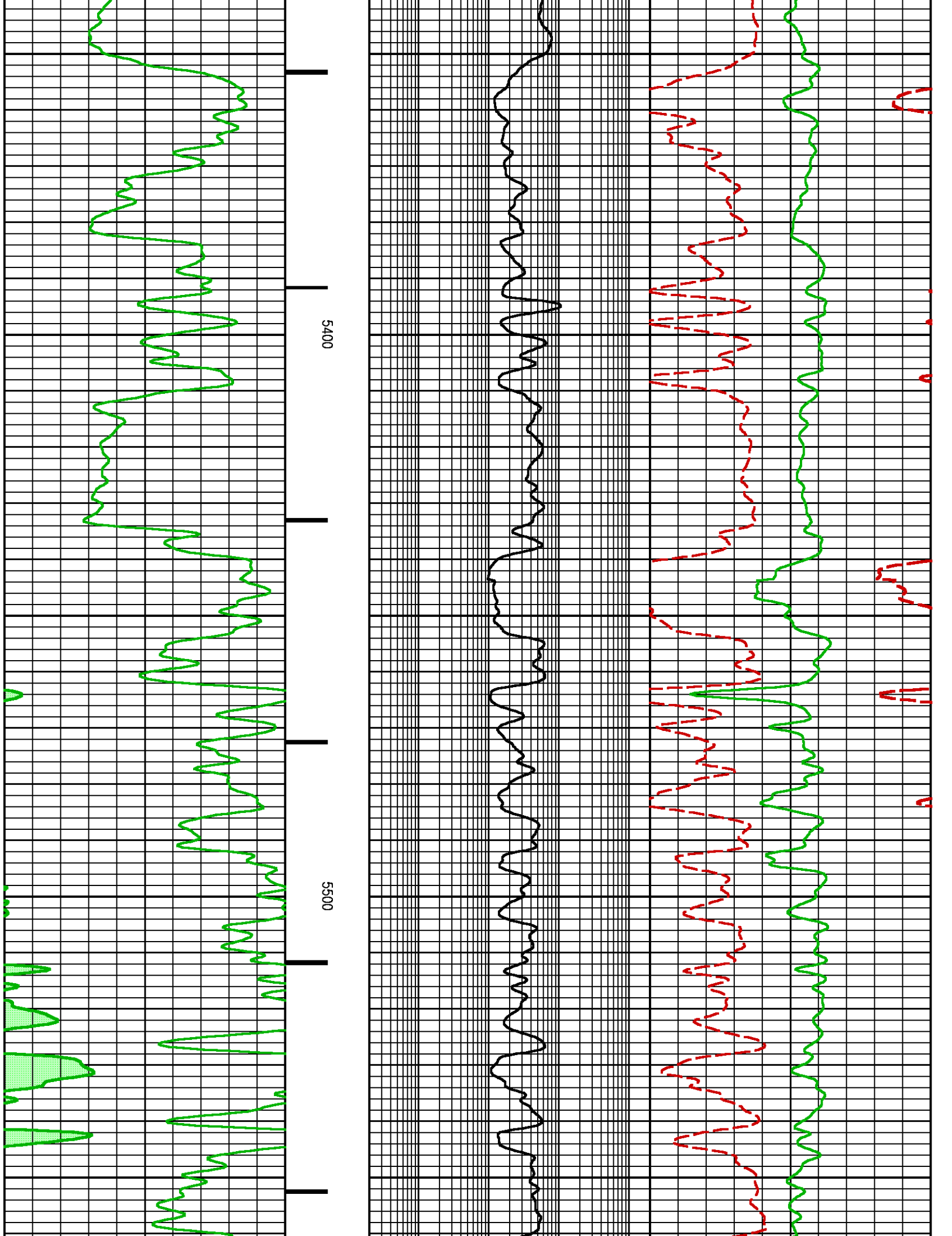
NEO RESULTS FOR BRUTON FEDERAL 30-18W (MAIN)

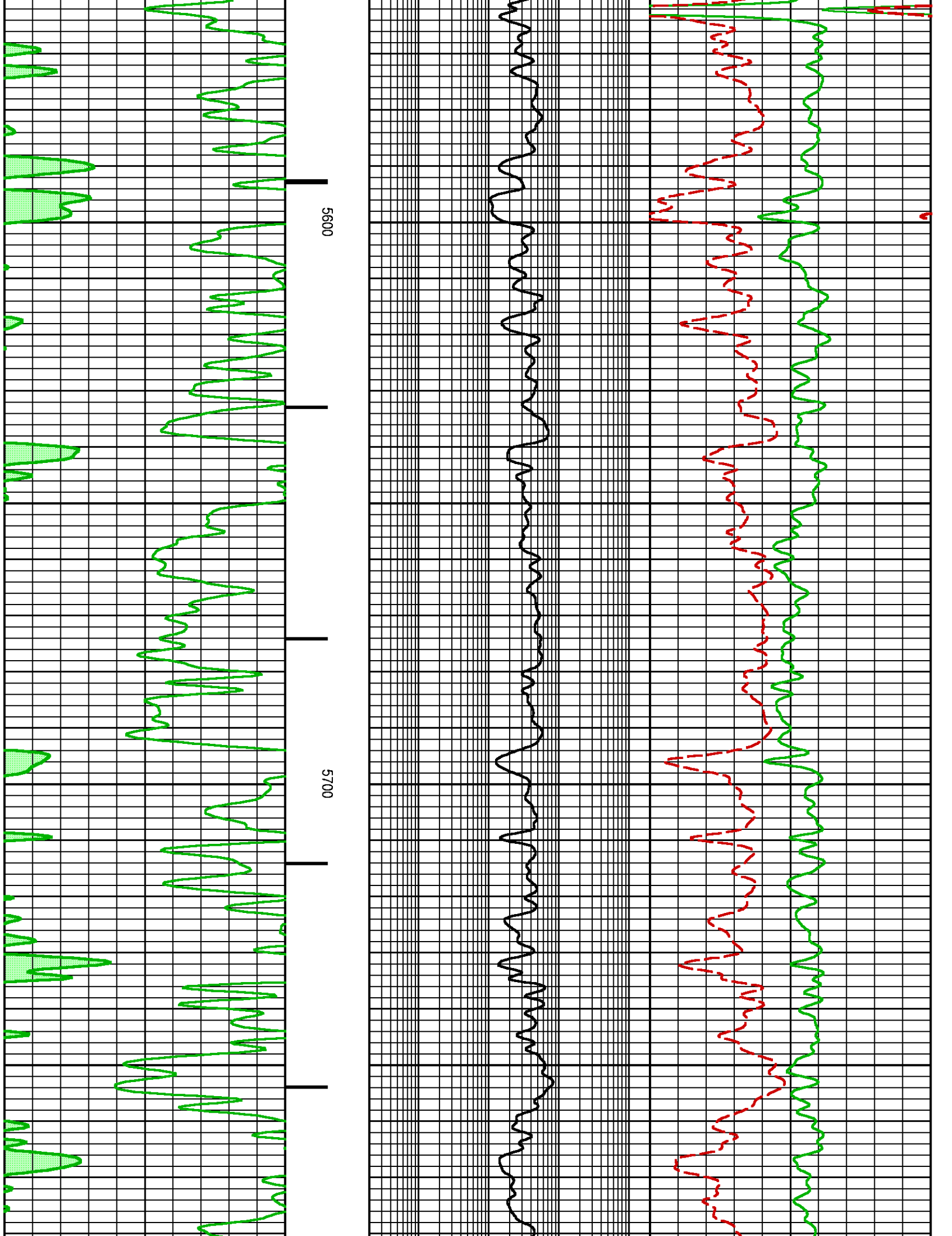
Project : NA
User : ellskima
Presentation : BHI3BKZH12:C:\Ape_Projects\laramie_bruton_30_18w\NEO_PRESENTATION_LARAMIE_MAIN.pdf [5"/100' Scale]
Plot Interval : 4920 - 8176 Feet
Data File 1 : F1 : BHI3BKZH12:C:\Ape_Projects\laramie_bruton_30_18w\Merged_Set_Final.xtf
Created On : N/A
Company : LARAMIE ENERGY LLC
Well : BRUTON FEDERAL 30-18W
Field : VEGA
File Interval : 2656 - 8176 Feet
OCT : NA

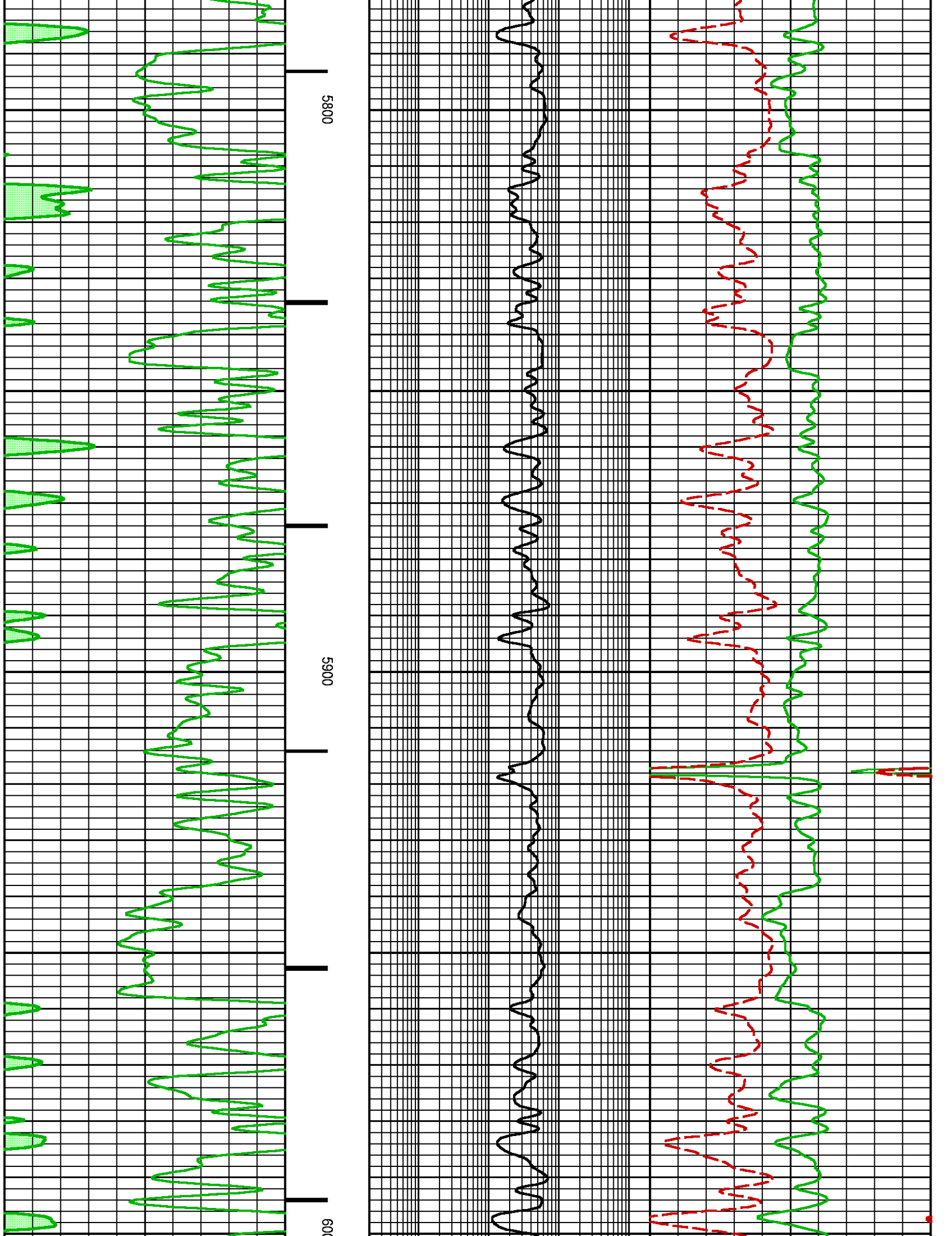


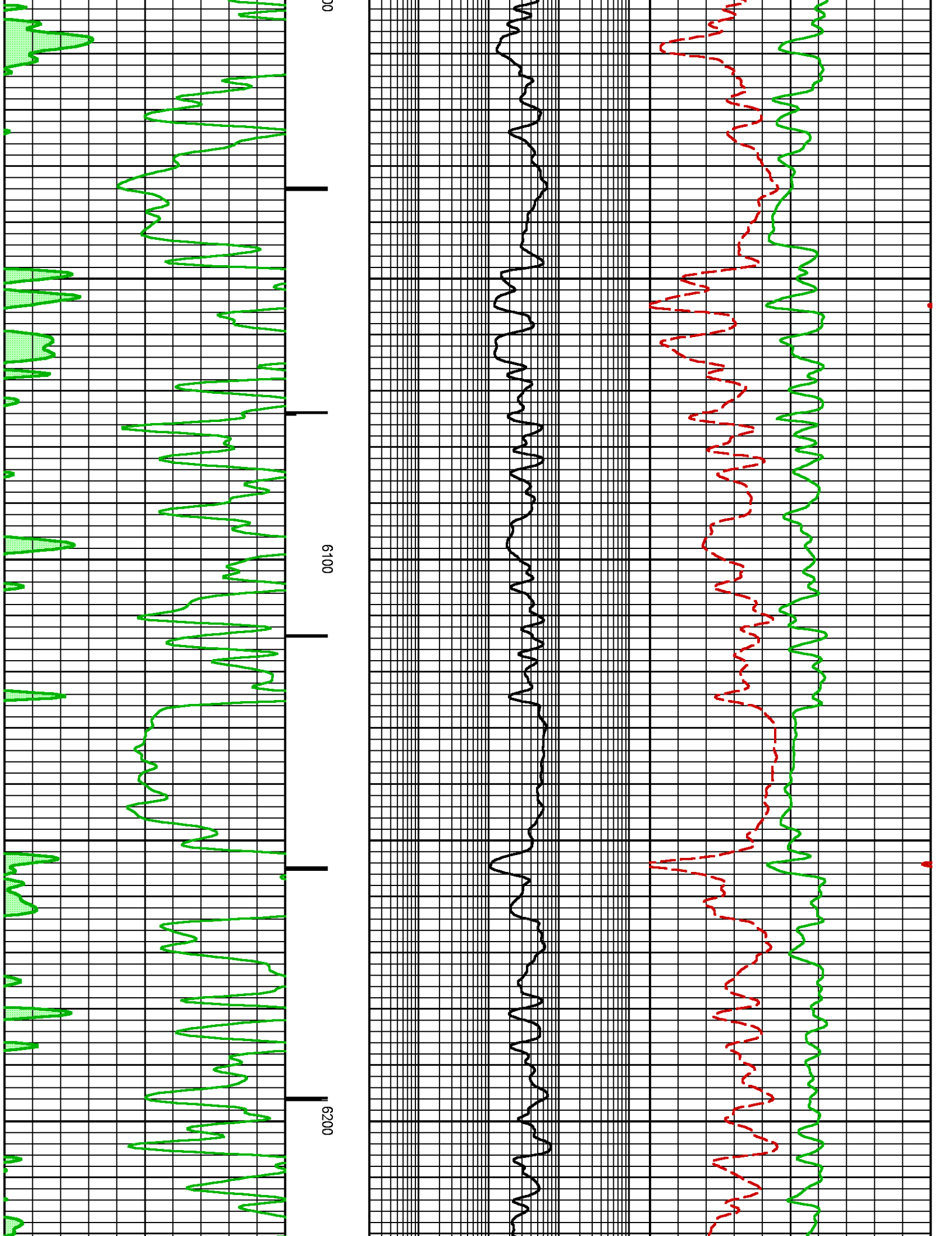


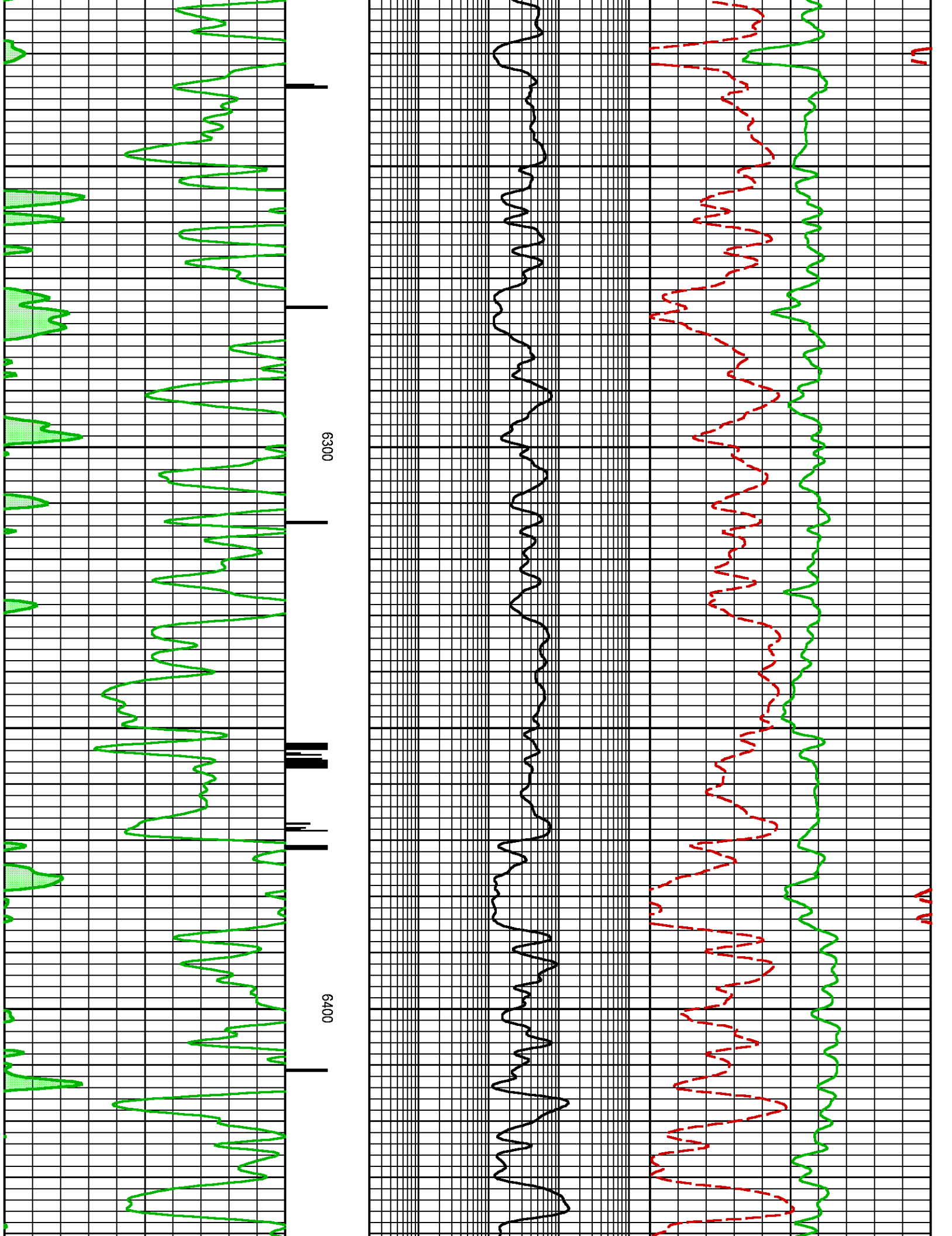


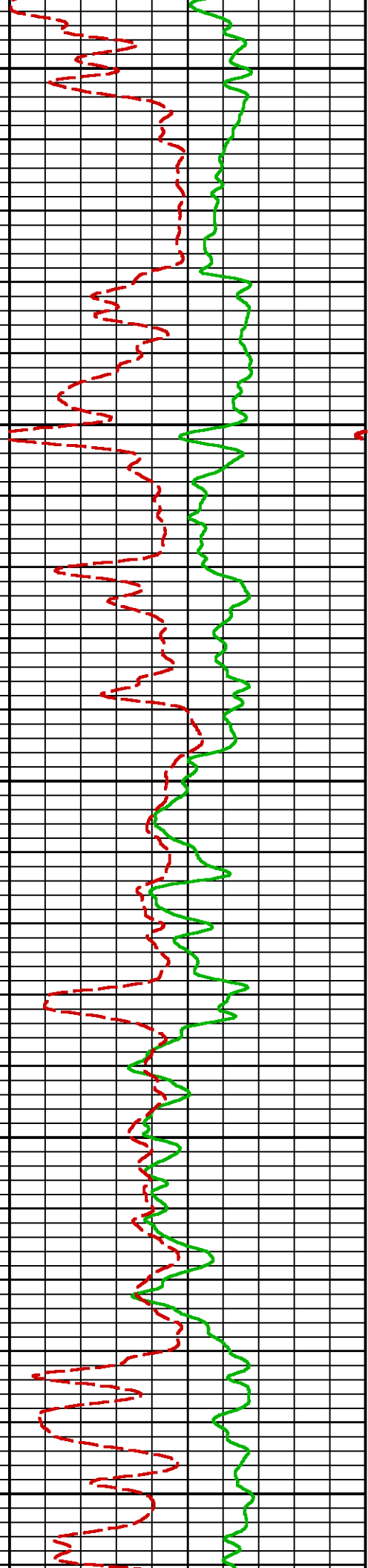
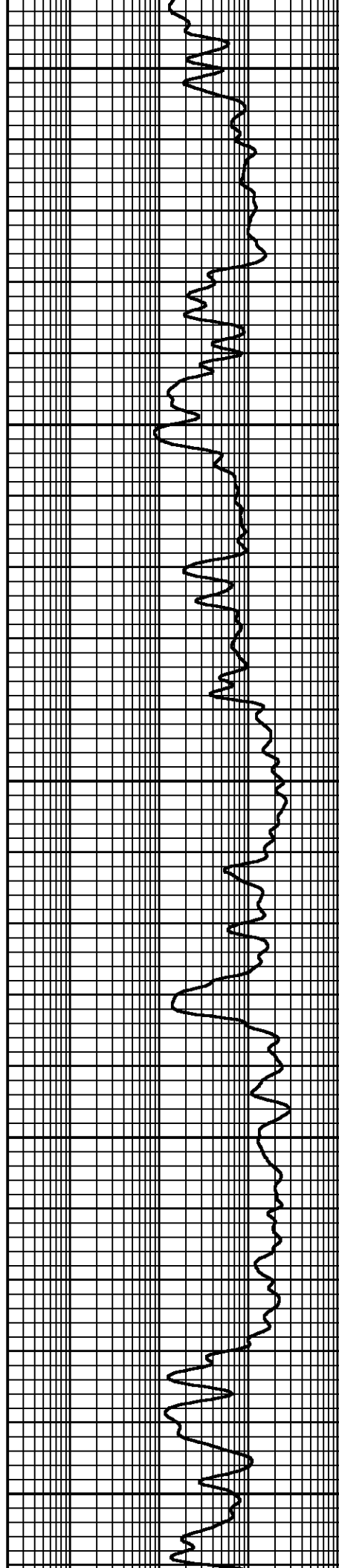
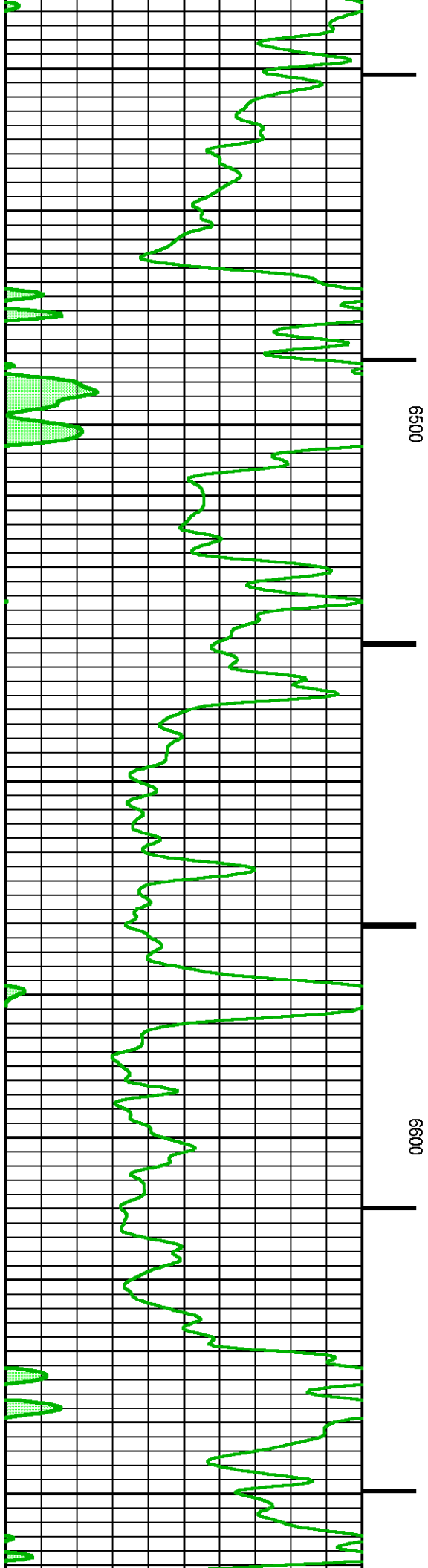


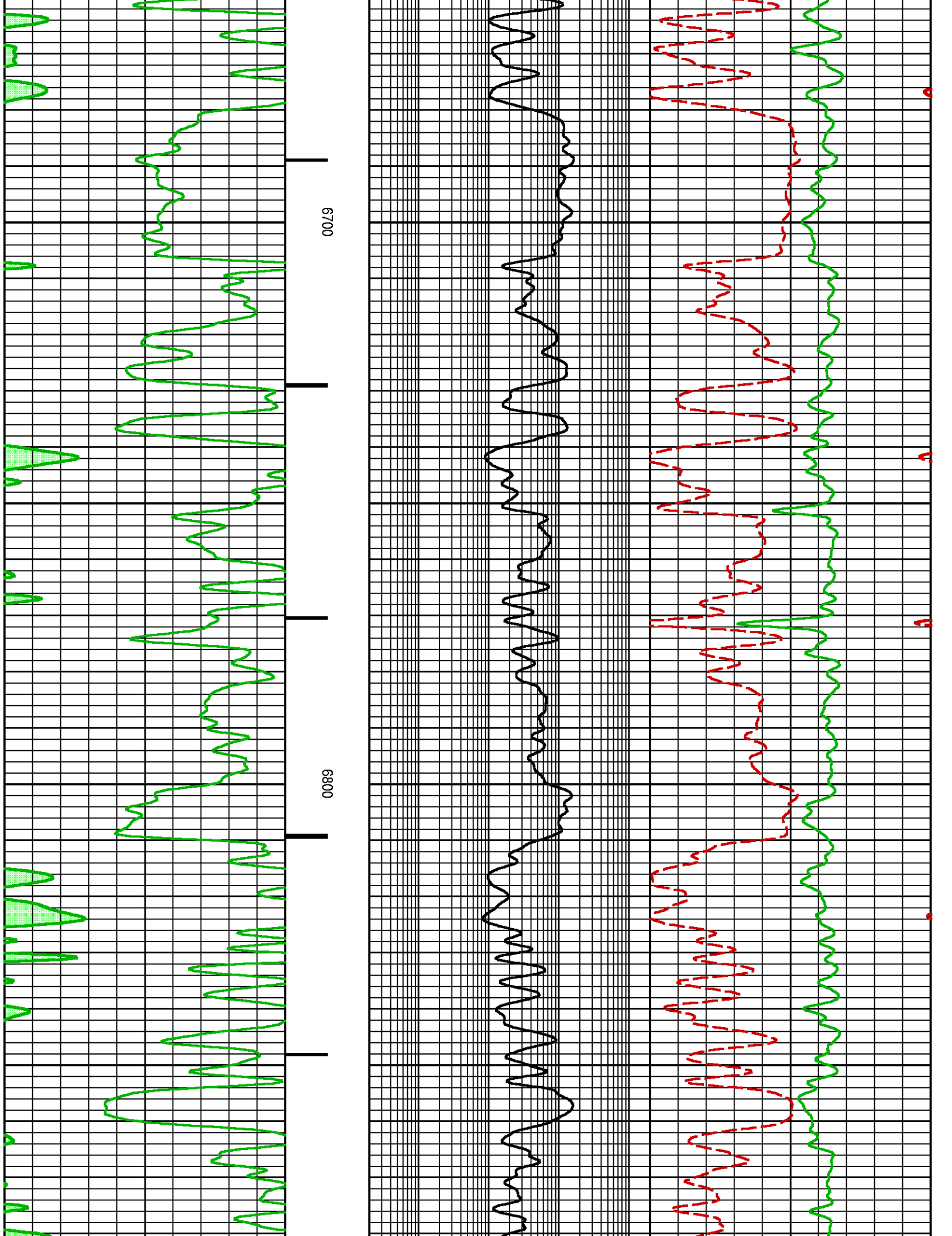


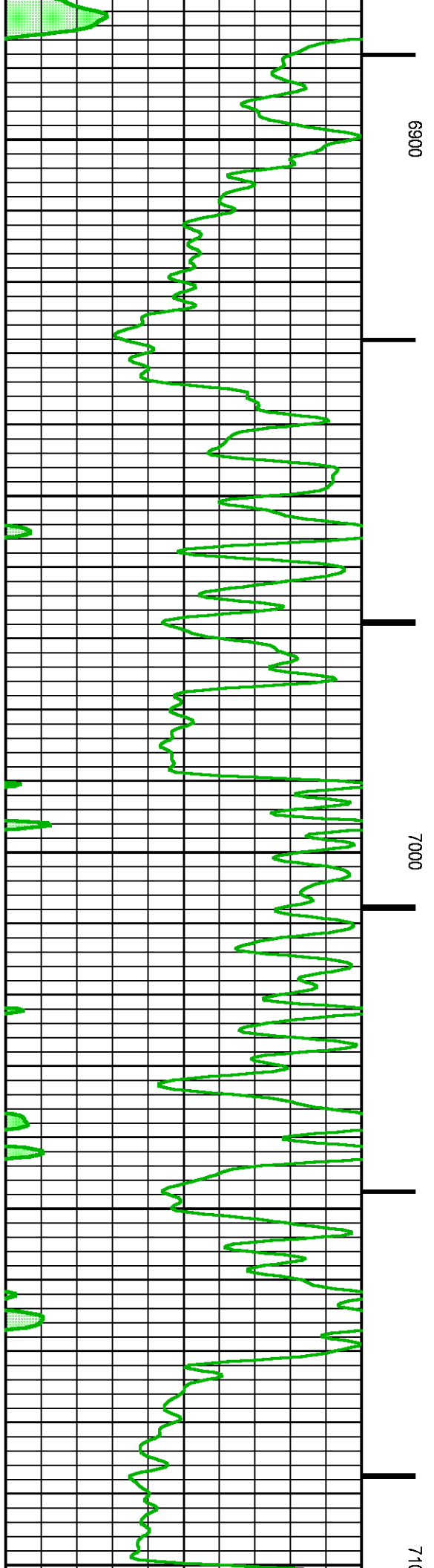
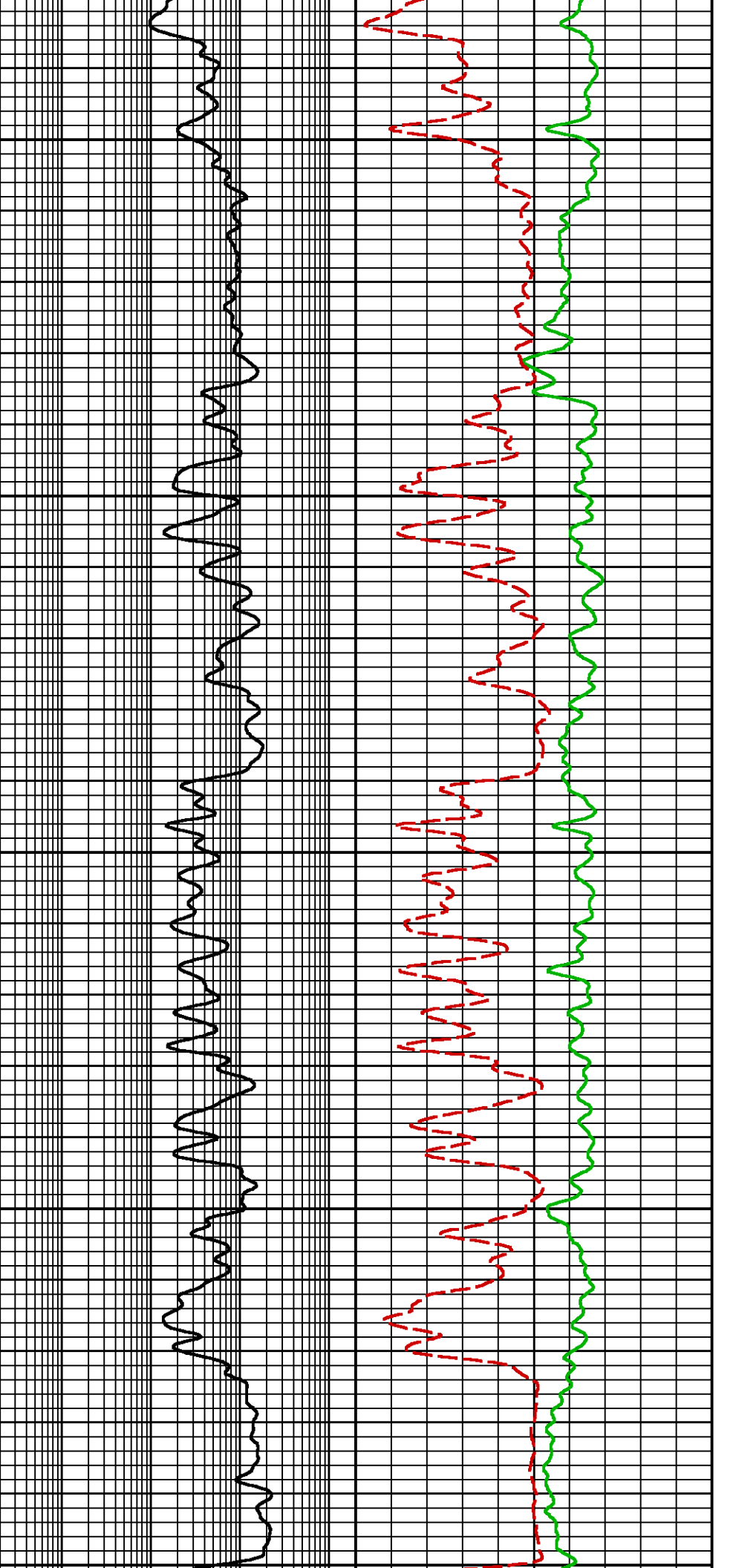


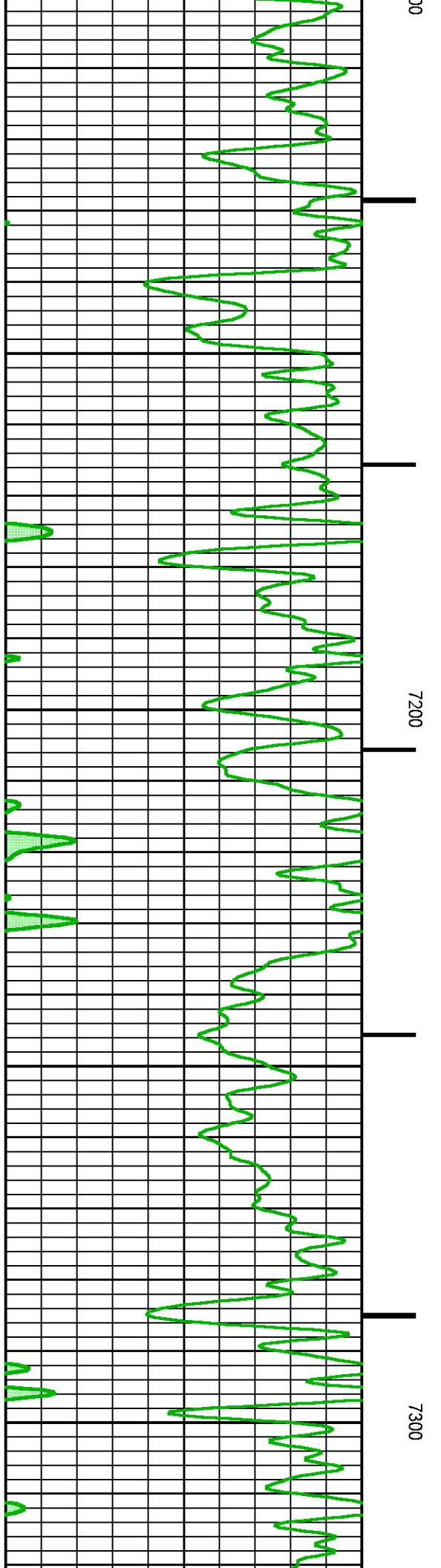
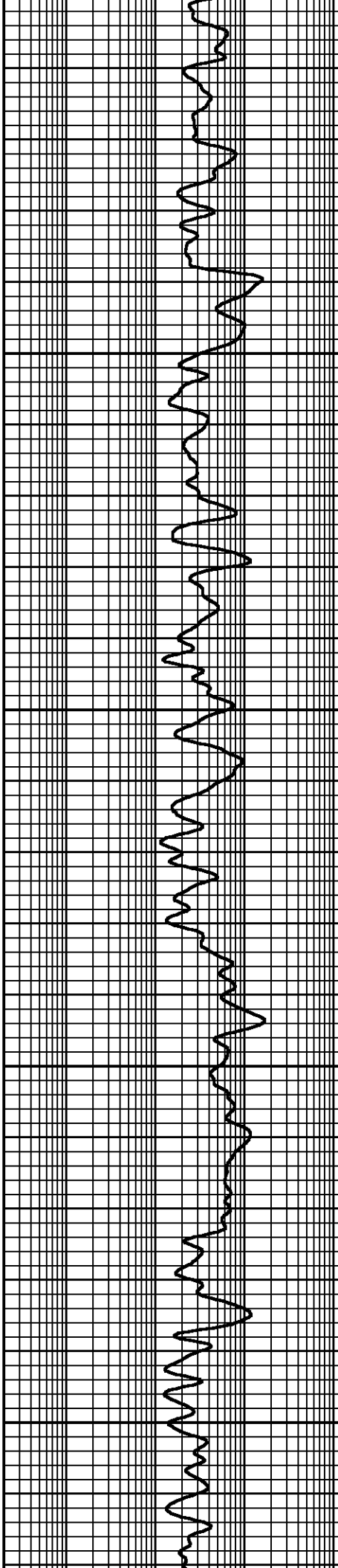
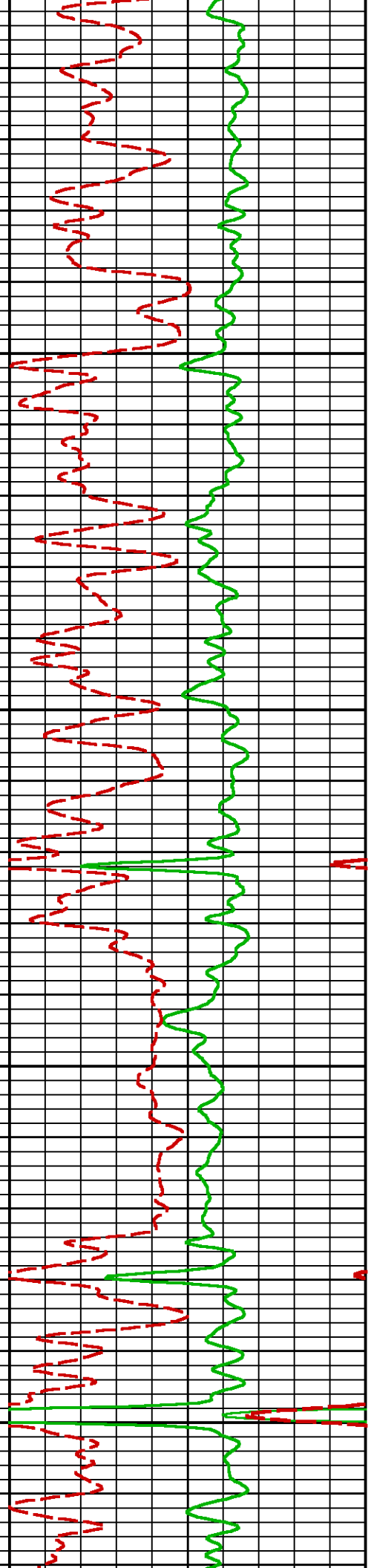


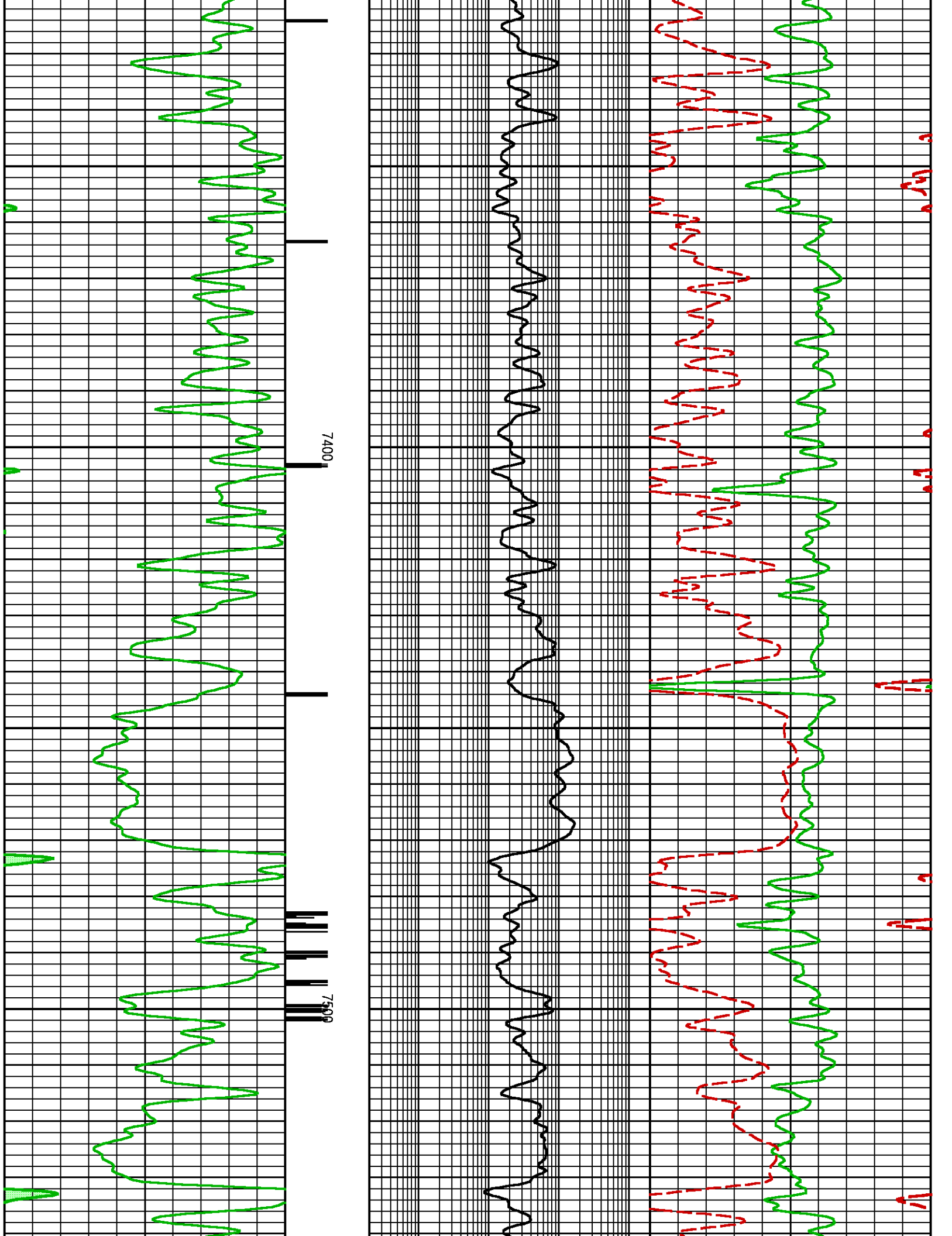


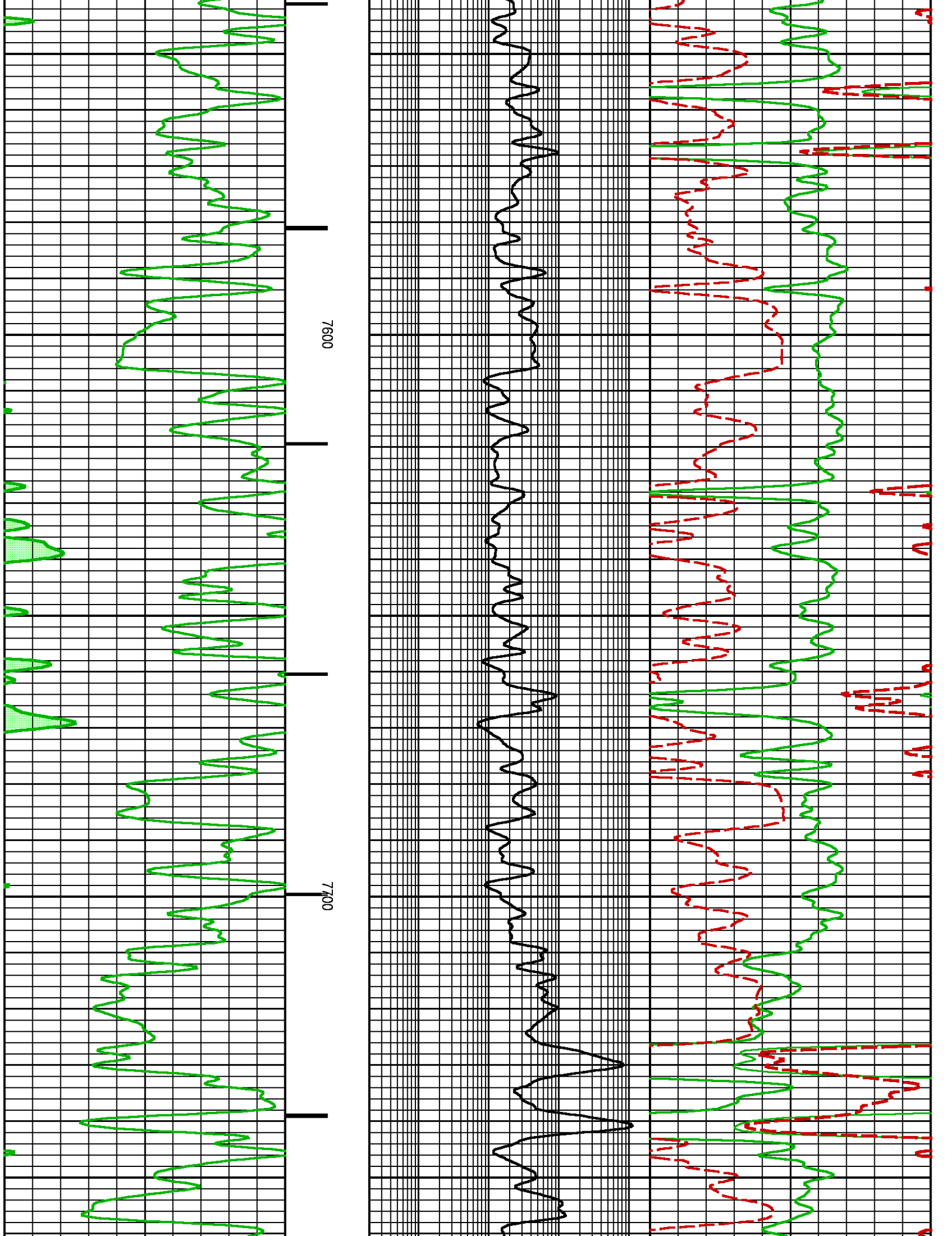


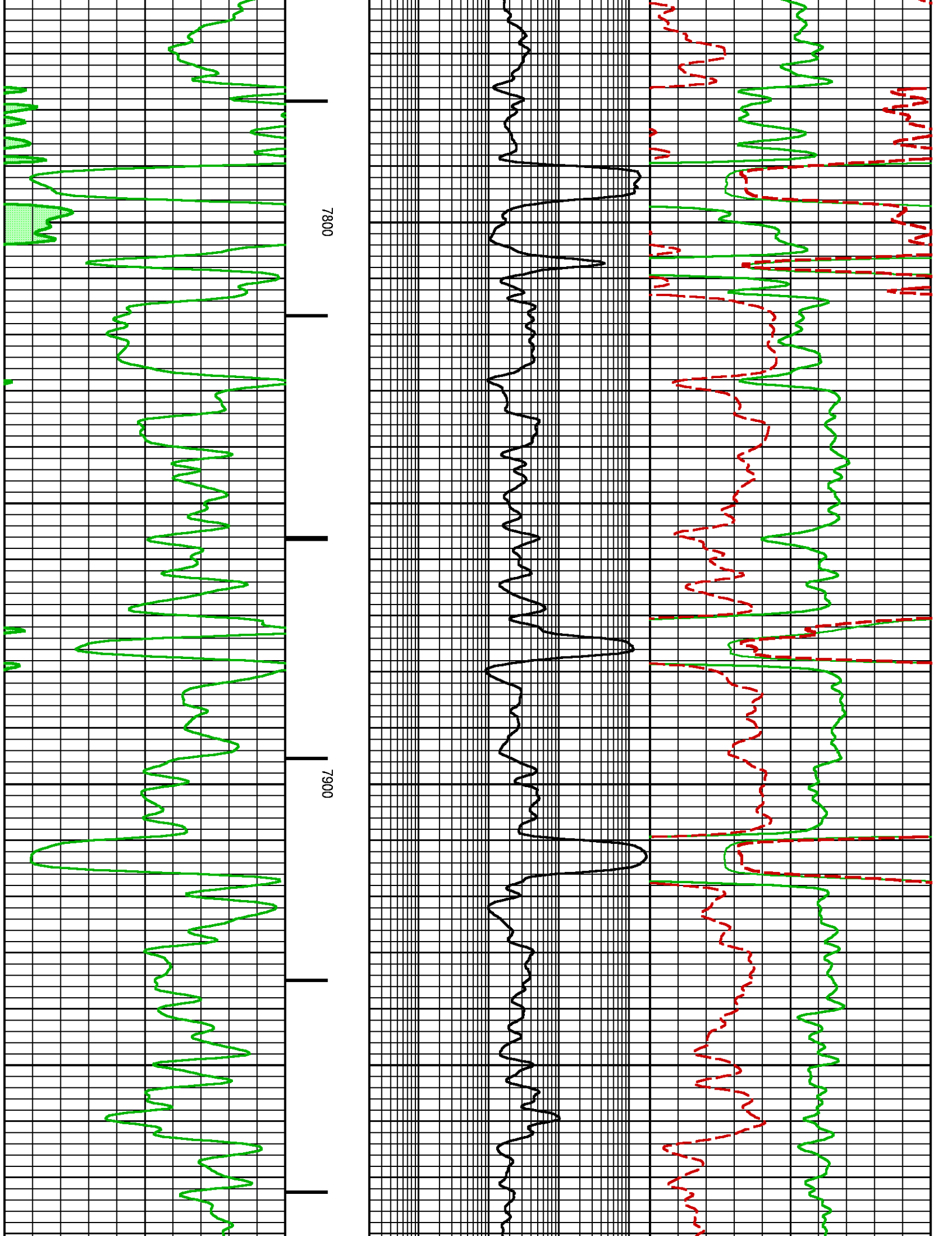


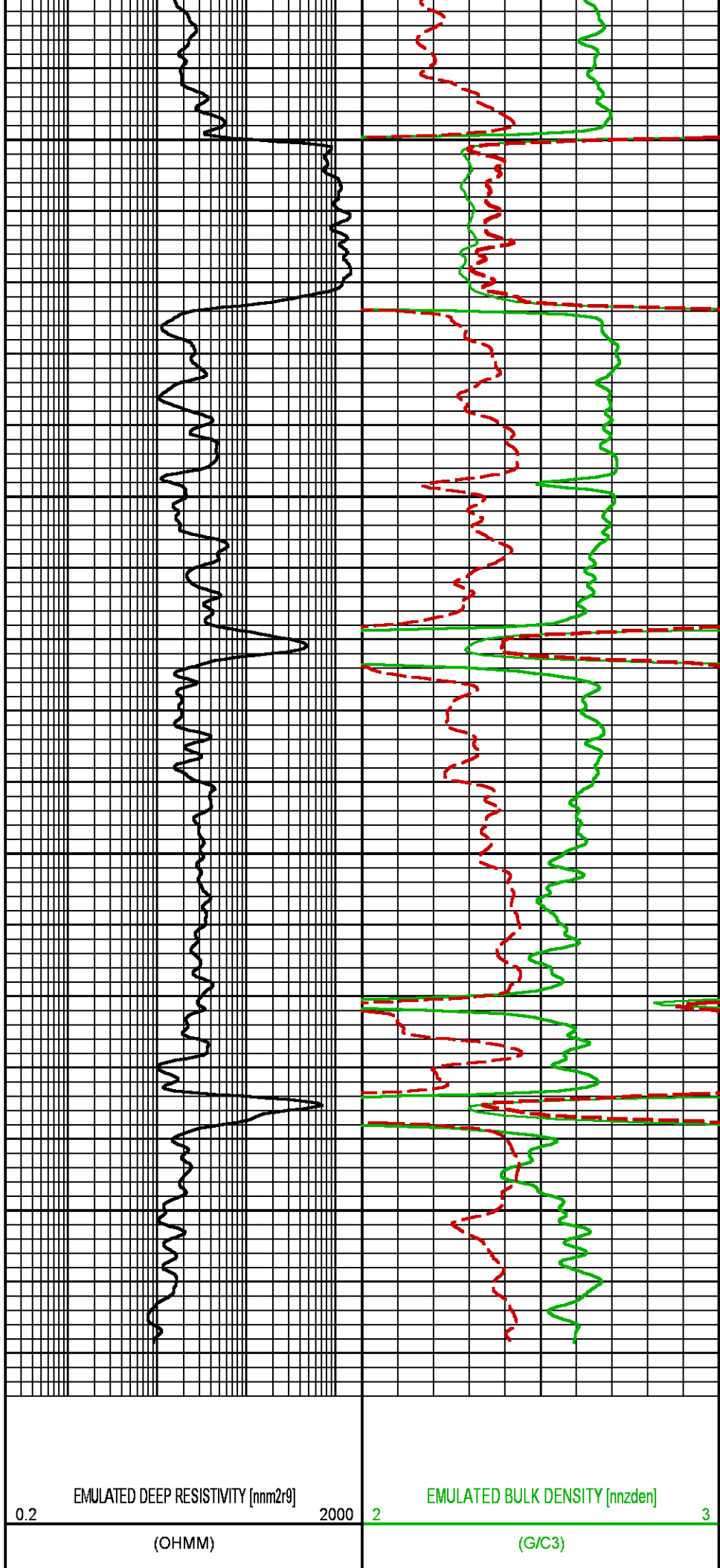
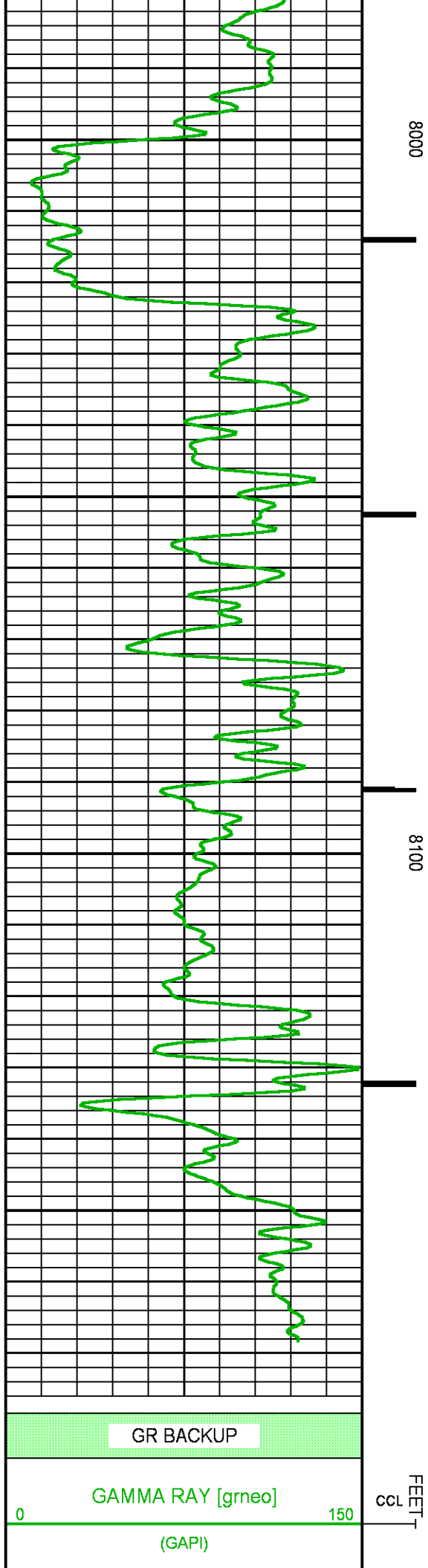




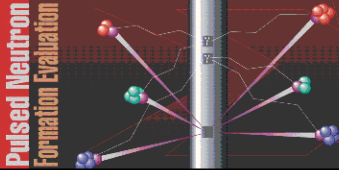








			<div>EMULATED NEUTRON POROSITY [nnccnf]</div> <div>0.3-----0.1</div> <div>(FRAC)</div>
--	--	--	--

<div> <div>BAKER HUGHES</div> <div>a GE company</div> <div>  </div> </div>	<div>COMPANY</div> <div>LARAMIE ENERGY</div>		<div>FILE NO:</div> <div></div>
	<div>WELL</div> <div>BRUTON FEDERAL 30-18W</div>		<div>API NO:</div> <div></div>
	<div>FIELD</div> <div>VEGA</div>	<div>COUNTY</div> <div>MESA</div>	<div>STATE</div> <div>COLORADO</div>
<div>LOCATION:</div> <div>SEE REMARKS</div>		<div>ELEVATIONS:</div> <div>KB 7673 FT</div> <div>DF</div> <div>GL 7643 FT</div>	
<div>SEC 30</div> <div>TWP 9S</div> <div>RGE 93W</div>		<div>DATE</div> <div>5-APR-2018</div>	