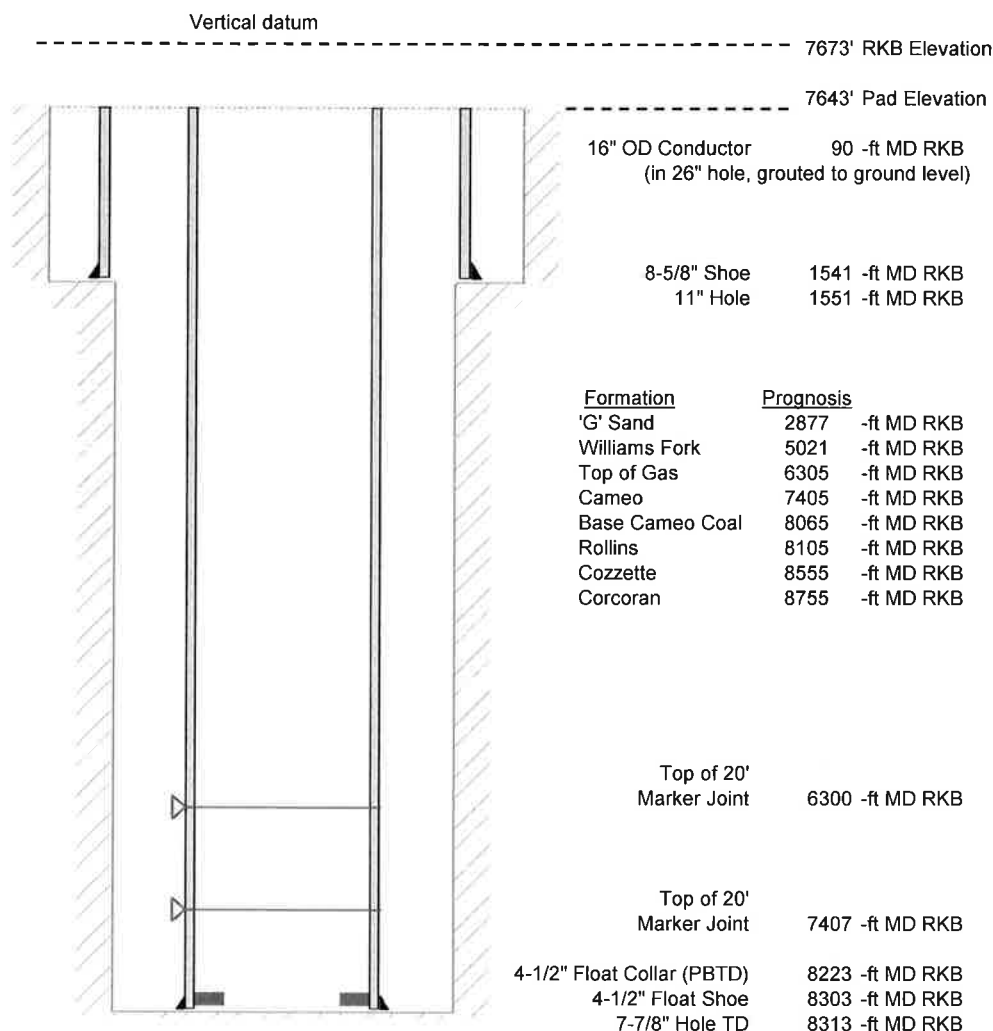


Laramie Energy, LLC
 Bruton Federal 30-17W
 Slot A-5
 H&P 522 (30-ft KB)

API # : 05-077-10468
 NW/4 SE/4 S30/T9S/R93W/6th PM
 Mesa County, CO
 Date of diagram : 1/9/2018



Cementing details

| 8-5/8" 24# Surface Csg | Lead | Tail |
|---------------------------|------|------|
| Density (ppg) | 12.3 | 12.8 |
| Volume (sx) | 197 | 109 |
| Yield (cf/sx) | 2.45 | 2.18 |
| Top (ft RKB) | 0 | 900 |
| Bottom (ft RKB) | 900 | 1541 |
| Returns (full or partial) | Full | Full |

| 4-1/2" 11.6# Prod Csg | Lead | Tail |
|---------------------------|------|------|
| Density (ppg) | 12.5 | 13.3 |
| Volume (sx) | 894 | 461 |
| Yield (cf/sx) | 1.94 | 1.73 |
| Est Top (ft RKB) | 227 | 6083 |
| Est Bottom (ft RKB) | 6083 | 8303 |
| Returns (full or partial) | Full | Full |

| Displacement |
|--------------|
| 8.3 ppg |
| 127 bbls |

Other Remarks : 20 bbls cement back on surface job. 30 bbls spacer back on production job.