

HALLIBURTON

iCem[®] Service

LARAMIE ENERGY LLC

For: Laramie

Date: Tuesday, December 19, 2017

BRUTON 30-15W Surface

API#05-077-10480

Sincerely,
Grand Junction Cement Engineering

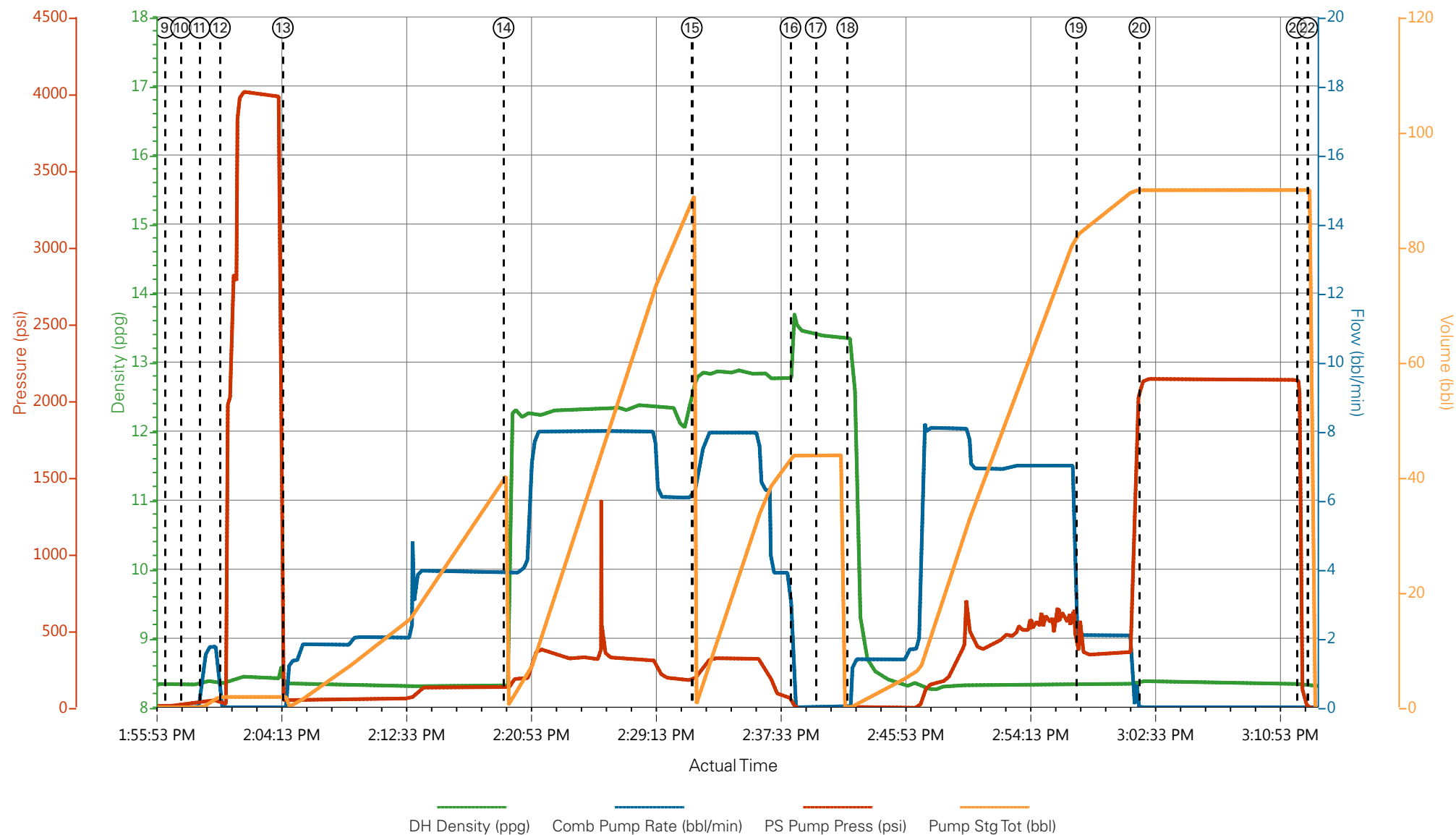
2.0 Real-Time Job Summary

2.1 Job Event Log

| Type | Seq. No. | Graph Label | Date | Time | Source | DH Density (ppg) | Comb Pump Rate (bbl/min) | PS Pump Press (psi) | Pump Stg Tot (bbl) | Comments |
|-------|----------|---------------------------------------|------------|----------|--------|---------------------|-----------------------------|------------------------|-----------------------|---|
| Event | 1 | Call Out | 12/19/2017 | 05:30:00 | USER | | | | | REQUESTED ON LOCATION TIME 1130 |
| Event | 2 | Pre-Convoy Safety Meeting | 12/19/2017 | 08:00:00 | USER | | | | | ALL HES EMPLOYEES |
| Event | 3 | Arrive At Loc | 12/19/2017 | 09:30:00 | USER | | | | | ARRIVED ON LOCATION 2 HOURS EARLY, RIG PREPARING TO RUN CASING |
| Event | 4 | Meet With Company Rep | 12/19/2017 | 09:35:00 | USER | | | | | COMPANY REP OFFERED SDS / WATER TEST: TEMP: 50 PH: 7 CHLORIDES: 0 |
| Event | 5 | Assessment Of Location Safety Meeting | 12/19/2017 | 12:30:00 | USER | | | | | ALL HES EMPLOYEES |
| Event | 6 | Pre-Rig Up Safety Meeting | 12/19/2017 | 12:35:00 | USER | | | | | ALL HES EMPLOYEES |
| Event | 7 | Rig-Up Equipment | 12/19/2017 | 12:45:00 | USER | | | | | 1 HT-400 PUMP TRUCK (ELITE #2) 1 660 BULK TRUCK 1 F-550 PICKUP |
| Event | 8 | Pre-Job Safety Meeting | 12/19/2017 | 13:33:00 | USER | | | | | ALL HES EMPLOYEES AND RIG CREW RIG CIRCULATED @ 9 BPM PRIOR TO THE JOB @ 210 PSI |
| Event | 9 | Start Job | 12/19/2017 | 13:56:38 | COM5 | | | | | TD: 1566 TP: 1556 SJ: 44.63 CSG: 8 5/8 24# J-55 OH: 11 MUD WT: 8.9 PPG 30 VIS |
| Event | 10 | Drop Bottom Plug | 12/19/2017 | 13:57:43 | USER | | | | | PLUG AWAY NO PROBLEMS |
| Event | 11 | Prime Lines | 12/19/2017 | 13:58:57 | COM5 | 8.33 | 2.0 | 45 | 2.0 | PRIME LINES WITH 2 BBLS FRESH WATER |
| Event | 12 | Test Lines | 12/19/2017 | 14:00:19 | COM5 | 8.33 | 0.0 | 4016 | 2.0 | PRESSURE TEST OK |
| Event | 13 | Pump Fresh Water Spacer | 12/19/2017 | 14:04:31 | COM5 | 8.33 | 4.0 | 125 | 40 | PUMP 40 BBL FRESH WATER SPACER |
| Event | 14 | Pump Lead Cement | 12/19/2017 | 14:19:15 | COM5 | 12.3 | 8.0 | 330 | 86.3 | 197 SKS 12.3 PPG 2.46 YIELD 14.17 GAL/SK LEAD CEMENT WEIGHT VERIFIED VIA PRESSURIZED MUD SCALES |

| | | | | | | | | | | |
|-------|----|-----------------------------|------------|----------|------|------|------|--------|------|--|
| Event | 15 | Pump Tail Cement | 12/19/2017 | 14:31:49 | COM5 | 12.8 | 8.0 | 380 | 42.3 | 109 SKS 12.8 PPG 2.18 YIELD 12.11 GAL/SK TAIL CEMENT WEIGHT VERIFIED VIA PRESSURIZED MUD SCALES |
| Event | 16 | Shutdown | 12/19/2017 | 14:38:25 | COM5 | | | | | SHUTDOWN TO DROP TOP PLUG |
| Event | 17 | Drop Top Plug | 12/19/2017 | 14:40:06 | COM5 | | | | | PLUG AWAY NO PROBLEMS, WASHED UP ON TOP OF THE PLUG |
| Event | 18 | Pump Displacement | 12/19/2017 | 14:42:12 | COM5 | 8.33 | 8.0 | 650 | 96.1 | FRESH WATER DISPLACEMENT |
| Event | 19 | Slow Rate | 12/19/2017 | 14:57:28 | USER | 8.33 | 2.0 | 360 | 86 | SLOW RATE TO BUMP PLUG |
| Event | 20 | Bump Plug | 12/19/2017 | 15:01:43 | COM5 | 8.33 | 2.0 | 2100 | 96.1 | PSI BEFORE BUMPING PLUG @ 360 BUMPED PLUG UP TO 2100 PSI FOR 10 MINUTE CASING TEST |
| Event | 21 | Check Floats | 12/19/2017 | 15:12:12 | USER | | | 2134 | | PRESSURE @ 2134 PRIOR TO CHECKING FLOATS. FLOATS HELD, 1 1/1 BBL BACK TO DISPLACEMENT TANKS |
| Event | 22 | End Job | 12/19/2017 | 15:12:55 | COM5 | | | | | GOOD RETURNS THROUGHOUT JOB, PIPE STATIC THROUGHOUT JOB 36 BBLs OF CEMENT TO SURFACE. RIG USED 40#s OF SUGAR |
| Event | 23 | Pre-Rig Down Safety Meeting | 12/19/2017 | 15:20:00 | USER | 0.00 | 0.00 | -18.00 | 0.0 | ALL HES EMPLOYEES |
| Event | 24 | Rig-Down Equipment | 12/19/2017 | 15:30:00 | USER | 0.00 | 0.00 | -13.00 | 0.0 | |
| Event | 25 | Pre-Convoy Safety Meeting | 12/19/2017 | 16:25:00 | USER | | | | | ALL HES EMPLOYEES |
| Event | 26 | Crew Leave Location | 12/19/2017 | 16:30:00 | USER | | | | | THANK YOU FOR USING HALLIBURTON CEMENT, DUSTIN SMITH AND CREW |

LARAMIE - BRUTON 30-15W - 8 5/8 SURFACE



- | | | | | |
|---|--------------------------|---------------------------|--------------------------------|------------------------------|
| ① Call Out | ⑦ Rig-Up Equipment | ⑬ Pump Fresh Water Spacer | ⑲ Slow Rate | 25 Pre-Convoy Safety Meeting |
| ② Pre-Convoy Safety Meeting | ⑧ Pre-Job Safety Meeting | ⑭ Pump Lead Cement | 20 Bump Plug | 26 Crew Leave Location |
| ③ Arrive At Loc | ⑨ Start Job | ⑮ Pump Tail Cement | 21 Check Floats | |
| ④ Meet With Company Rep | ⑩ Drop Bottom Plug | ⑯ Shutdown | 22 End Job | |
| ⑤ Assessment Of Location Safety Meeting | ⑪ Prime Lines | ⑰ Drop Top Plug | 23 Pre-Rig Down Safety Meeting | |
| ⑥ Pre-Rig Up Safety Meeting | ⑫ Test Lines | ⑱ Pump Displacement | 24 Rig-Down Equipment | |

▼ HALLIBURTON | iCem® Service

Created: 2017-12-19 06:32:13, Version: 4.2.393

Edit

Customer: LARAMIE ENERGY II LLC

Job Date: 12/19/2017 1:13:05 PM

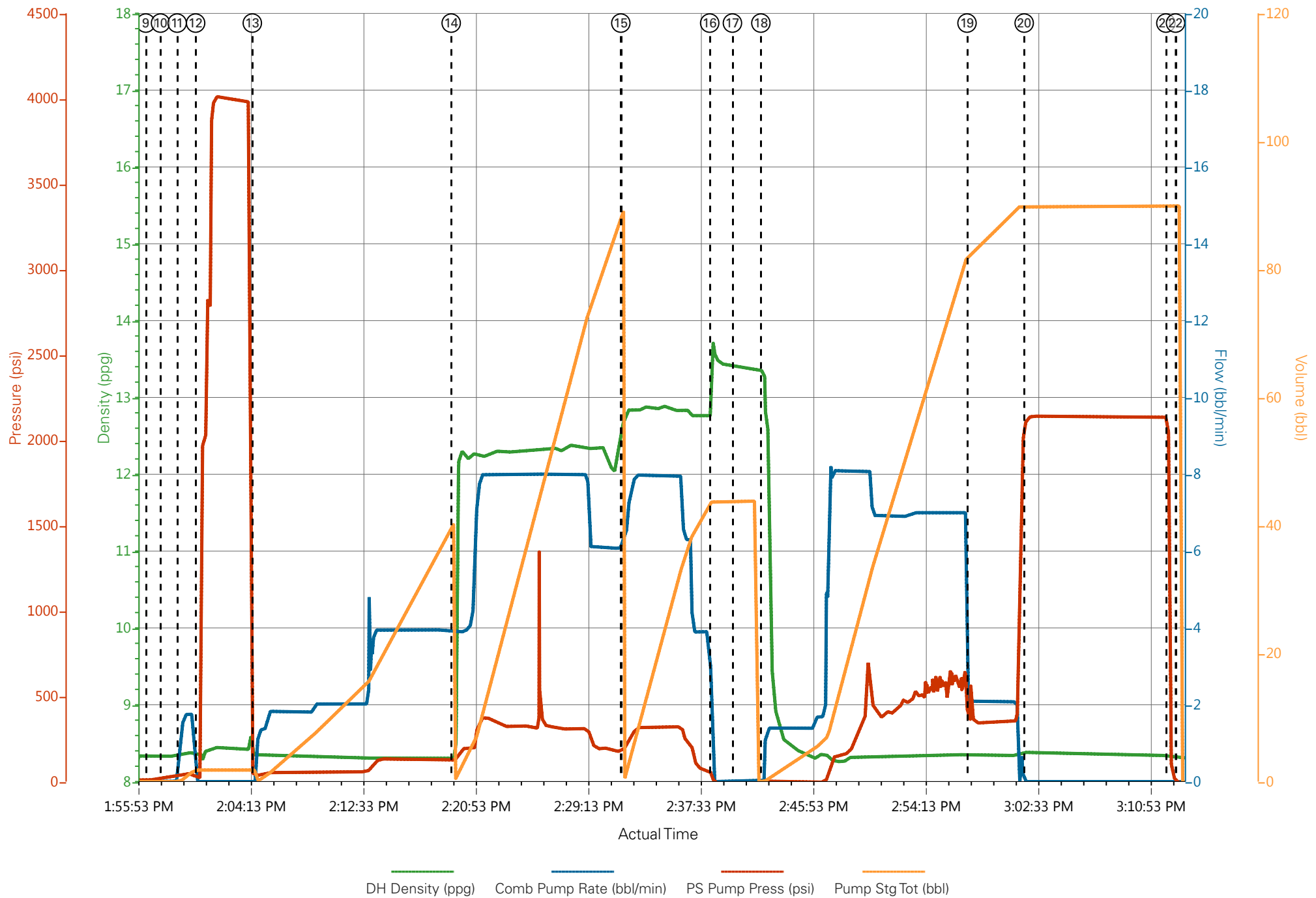
Well: BRUTON 30-15W

Representative: SHANE HEARD

Sales Order #: 0904514711

ELITE # 2: DUSTIN SMITH / JAMES LEIST

LARAMIE - BRUTON 30-15W - 8 5/8 SURFACE



HALLIBURTON

iCem[®] Service

LARAMIE ENERGY LLC

For: Laramie

Date: Saturday, December 23, 2017

BRUTON 30-15W Production

API#05-077-10480

Sincerely,
Grand Junction Cement Engineering

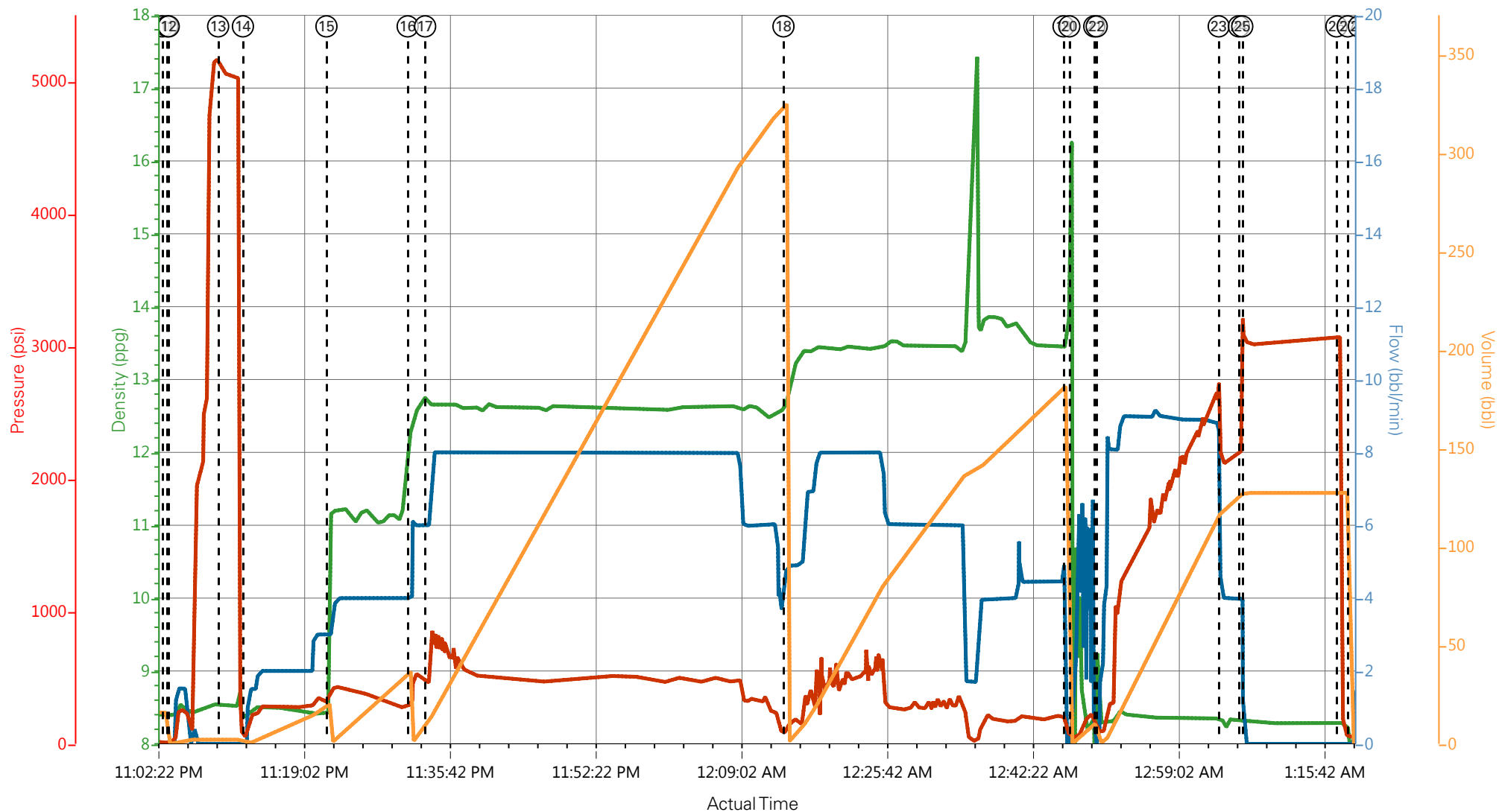
2.0 Real-Time Job Summary

2.1 Job Event Log

| Type | Seq. No. | Graph Label | Date | Time | Source | DH Density (ppg) | Comb Pump Rate (bbl/min) | PS Pump Press (psi) | Pump Stg Tot (bbl) | Comments |
|-------|----------|--|------------|----------|--------|---------------------|-----------------------------|------------------------|-----------------------|--|
| Event | 1 | Call Out | 12/22/2017 | 14:30:00 | USER | | | | | ON LOCATION REQUESTED 20:30 |
| Event | 2 | Pre-Convoy Safety Meeting | 12/22/2017 | 18:00:00 | USER | | | | | ALL HES PRESENT |
| Event | 3 | Crew Leave Yard | 12/22/2017 | 18:15:00 | USER | | | | | |
| Event | 4 | Arrive at Location from Service Center | 12/22/2017 | 20:00:00 | USER | | | | | RIG RUNNING CASING |
| Event | 5 | Assessment Of Location Safety Meeting | 12/22/2017 | 20:15:00 | USER | | | | | MET WITH COMPANY REP DISCUSSED JOB PROCEDURE SDS OFFERED |
| Event | 6 | Pre-Rig Up Safety Meeting | 12/22/2017 | 20:30:00 | USER | | | | | ALL HES PRESENT |
| Event | 7 | Rig-Up Completed | 12/22/2017 | 21:45:00 | USER | | | | | 1-ELITE,1-660 BULK TRAILER, 2-FIELD SILO, 4.5" QL PLUG CONTAINER, 2" IRON, 4" SUCTION HOSE |
| Event | 8 | Other | 12/22/2017 | 21:50:00 | USER | | | | | WATER:TEMP-50, CL-0,PH-7. RIG CIRCULATED 1 HOUR 40 MINS AT 410GPM 700PSI |
| Event | 9 | Pre-Job Safety Meeting | 12/22/2017 | 22:20:00 | USER | | | | | ALL HES AND RIG CREW PRESENT |
| Event | 10 | Start Job | 12/22/2017 | 23:03:11 | USER | 8.40 | 0.00 | 10.00 | 0.00 | TD-8225', TP-8220' SET @ 8214', SJ-91.71', OH-7.875", CSG-4.5" 11.6# I-80, SCSG-1556' 8.625" 24#, MUD-9.1PPG 36 VISC |
| Event | 11 | Prime Pumps | 12/22/2017 | 23:03:45 | COM5 | 8.40 | 2.00 | 240.00 | 2.0 | FRESH WATER |
| Event | 12 | Drop Bottom Plug | 12/22/2017 | 23:03:55 | COM5 | | | | | PLUG AWAY |
| Event | 13 | Test Lines | 12/22/2017 | 23:09:34 | COM5 | 8.53 | 0.00 | 5084.00 | 2.1 | PRESSURE HELD ON LINES |
| Event | 14 | Pump Mud Flush | 12/22/2017 | 23:12:24 | COM5 | 8.39 | 3.00 | 315.00 | 20.0 | MUD FLUSH III |

| | | | | | | | | | | |
|-------|----|--|------------|----------|------|-------|------|---------|-------|---|
| Event | 15 | Pump Tuned Spacer | 12/22/2017 | 23:21:57 | COM5 | 11.00 | 4.00 | 420.00 | 40.0 | TUNED SPACER III, 40 BBL, 11.0PPG, 4.86CF/SK, 31.9GAL/SK |
| Event | 16 | Pump Lead Cement | 12/22/2017 | 23:31:14 | COM5 | 12.50 | 8.00 | 760.00 | 301.9 | NEOCEM 874SKS, 12.5PPG, 1.94CF/SK, 9.6GAL/SK |
| Event | 17 | Check weight | 12/22/2017 | 23:33:14 | COM5 | | | | | WEIGHT VERIFIED BY PRESSURIZED MUD SCALES |
| Event | 18 | Pump Tail Cement | 12/23/2017 | 00:14:12 | COM5 | 13.30 | 8.00 | 480.00 | 142.0 | THERMACEM 461SKS, 13.3PPG, 1.73CF/SK, 7.81GAL/SK |
| Event | 19 | Shutdown | 12/23/2017 | 00:46:14 | USER | | | | | |
| Event | 20 | Clean Lines | 12/23/2017 | 00:46:53 | USER | | | | | CLEANED PUMPS AND LINES TO CELLAR |
| Event | 21 | Drop Top Plug | 12/23/2017 | 00:49:44 | COM5 | | | | | PLUG AWAY |
| Event | 22 | Pump Displacement | 12/23/2017 | 00:50:01 | COM5 | 8.28 | 9.00 | 2650.00 | 125.7 | FRESH WATER 5 GAL CLA WEB, 1 GAL MMCR |
| Event | 23 | Slow Rate | 12/23/2017 | 01:03:58 | USER | 8.32 | 4.00 | 2112.00 | 115.0 | SLOW RATE LAST 10 BBLS |
| Event | 24 | Bump Plug | 12/23/2017 | 01:06:16 | COM5 | 8.31 | 4.00 | 2250.00 | 125.7 | PLUG BUMPED 2250 PSI |
| Event | 25 | Casing Test | 12/23/2017 | 01:06:39 | COM5 | 8.30 | 0.00 | 3017.00 | 125.7 | 10 MINUTE CASING TEST |
| Event | 26 | Check Floats | 12/23/2017 | 01:17:26 | USER | 8.29 | 0.00 | 3075.00 | 125.7 | FLOATS HELD 1 BBL BACK |
| Event | 27 | End Job | 12/23/2017 | 01:18:43 | COM5 | | | | | GOOD RETURNS THROUGH OUT JOB, 40 BBLS TUNED SPACER TO SURFACE |
| Event | 28 | Post-Job Safety Meeting (Pre Rig-Down) | 12/23/2017 | 01:20:00 | USER | | | | | ALL HES PRESENT |
| Event | 29 | Rig-Down Completed | 12/23/2017 | 02:30:00 | USER | | | | | |
| Event | 30 | Pre-Convoy Safety Meeting | 12/23/2017 | 02:45:00 | USER | | | | | ALL HES PRESENT |
| Event | 31 | Crew Leave Location | 12/23/2017 | 03:00:00 | USER | | | | | THANK YOU FOR CHOSING HALLIBURTON, ANDREW BRENNECKE AND CREW |

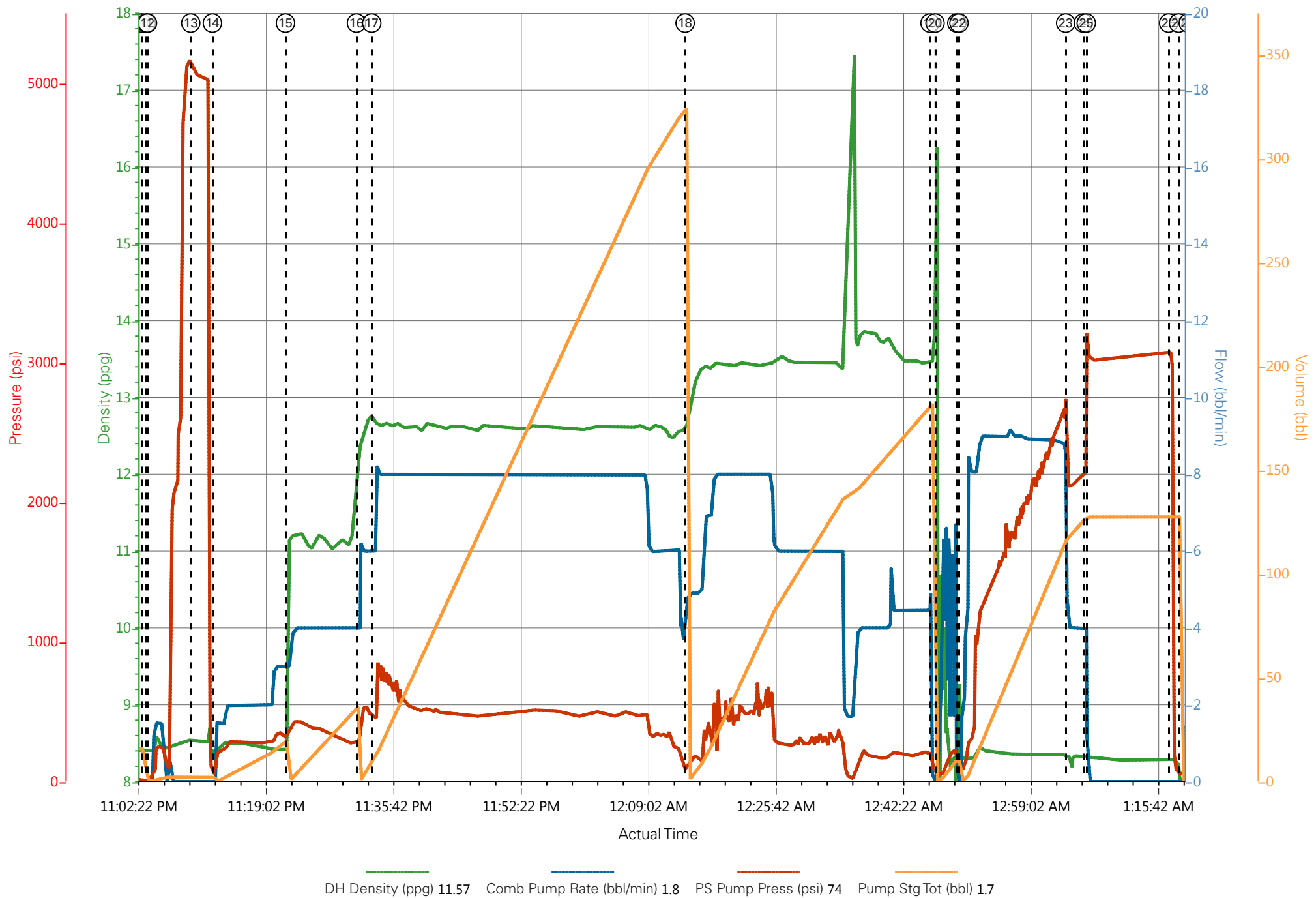
LARAMIE - BRUTON 30-15W - 4.5" PRODUCTION



DH Density (ppg) 11.57 Comb Pump Rate (bbl/min) 1.8 PS Pump Press (psi) 74 Pump Stg Tot (bbl) 1.7

- | | | | | | | |
|--|---|--------------------------|---------------------|--------------------|----------------------|---------------|
| ① Call Out | ⑤ Assessment Of Location Safety Meeting | ⑨ Pre-Job Safety Meeting | ⑬ Test Lines | ⑰ Check weight | 21 Drop Top Plug | 25 Other |
| ② Pre-Convoy Safety Meeting | ⑥ Pre-Rig Up Safety Meeting | ⑩ Start Job | ⑭ Pump Mud Flush | ⑱ Pump Tail Cement | 22 Pump Displacement | 26 Check Flo |
| ③ Crew Leave Yard | ⑦ Rig-Up Completed | ⑪ Prime Pumps | ⑮ Pump Tuned Spacer | ⑲ Shutdown | 23 Slow Rate | 27 End Job |
| ④ Arrive at Location from Service Center | ⑧ Other | ⑫ Drop Bottom Plug | ⑯ Pump Lead Cement | 20 Clean Lines | 24 Bump Plug | 28 Post-Job S |

LARAMIE - BRUTON 30-15W - 4.5" PRODUCTION



Job Information

| | | | | | |
|-----------------------|----------------|-----------------|-------------------|-------------------|----------------|
| Request/Slurry | 2439170/1 | Rig Name | H&P 522 | Date | 18/DEC/2017 |
| Submitted By | Aaron Katz | Job Type | Production Casing | Bulk Plant | Grand Junction |
| Customer | Laramie Energy | Location | Garfield | Well | Bruton 30-15W |

Well Information

| | | | | | |
|--------------------------|----------|------------------|---------|-------------|---------------|
| Casing/Liner Size | 4.5 in | Depth MD | 8251 ft | BHST | 116°C / 240°F |
| Hole Size | 7.875 in | Depth TVD | 7725 ft | BHCT | 78°C / 172°F |
| Pressure | 4720 psi | | | | |

Drilling Fluid Information

| | | | | | |
|--------------------------|--|-----------------------|--|----------------|-------------|
| Mud Supplier Name | | Mud Trade Name | | Density | 9.9 lbm/gal |
|--------------------------|--|-----------------------|--|----------------|-------------|

Cement Information - Lead Design

| <u>Conc</u> | <u>UOM</u> | <u>Cement/Additive</u> | <u>Sample Type</u> | <u>Sample Date</u> | <u>Lot No.</u> | Cement Properties | | |
|-------------|------------|------------------------|--------------------|--------------------|----------------|--------------------------|-------------|----------|
| | | NeoCem | | | | Slurry Density | 12.5 | lbm/gal |
| | | | | | | Slurry Yield | 1.941 | ft3/sack |
| | | | | | | Water Requirement | 9.623 | gal/sack |
| | | | | | | Total Mix Fluid | 9.623 | gal/sack |
| | | | | | | Water Source | Fresh Water | |
| | | | | | | Water Chloride | N/A | |

This report is the property of Halliburton Energy Services and neither it nor any part thereof, nor a copy thereof, is to be published or disclosed without first securing the expressed written approval of Halliburton. It may however be used in the course of regular business operations by any person or concern receiving such report from Halliburton. This report is for information purposes only and the content is limited to the sample described. Halliburton makes no warranties, expressed or implied, as to the accuracy of the contents or results. Any user of this report agrees Halliburton shall not be liable for any loss or damage regardless of cause, including any act or omission of Halliburton, resulting from the use hereof.

Operation Test Results Request ID 2439170/1

Thickening Time - ON-OFF-ON

20/DEC/2017

| Test Temp (degF) | Pressure (psi) | Reached in (min) | 30 Bc (hh:min) | 50 Bc (hh:min) | 70 Bc (hh:min) | 100 Bc (hh:min) | Start Bc | Stirring before stop (mins) | Static Period (min) | Peak reading (BC) |
|------------------|----------------|------------------|----------------|----------------|----------------|-----------------|----------|-----------------------------|---------------------|-------------------|
| 172 | 4720 | 49 | 3:44 | 3:48 | 4:07 | 10:31 | 8 | 59 | 15 | 8 |

Total sks = 874

Composite:

CS3425 TR 1656 437 SKS

CS3438 TR 8476 437 SKS

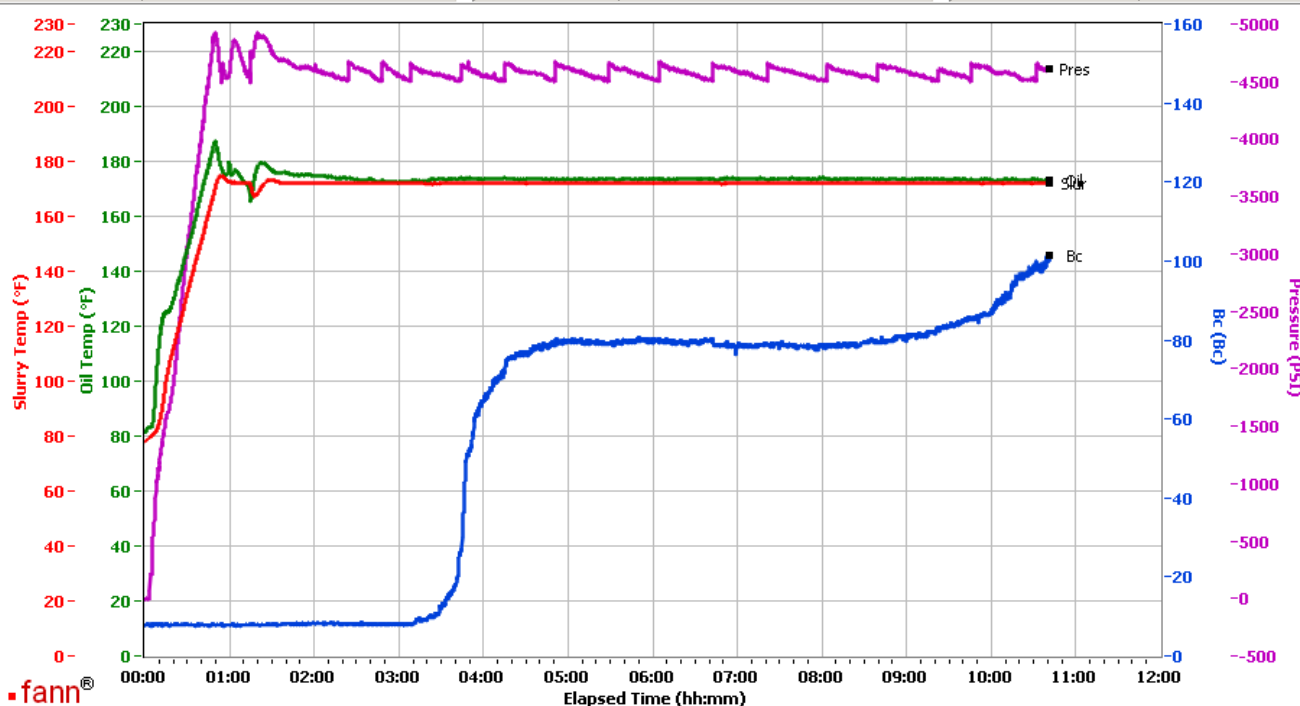
Deflection: 8 - 8

Grand Junction Colorado

| Fields | Values |
|-------------------|-------------------------------------|
| Project Name | GJ2439170-1 LARAMIE PRODUCTION LEAD |
| Test ID | 35114309 |
| Request ID | 2439170-1 |
| Tested by | JASON |
| Customer | LARAMIE ENERGY |
| Well No | BRUTON 30-15W |
| Rig | H&P 522 |
| Casing/Liner Size | 4.5" |

| Fields | Values |
|----------------|------------------|
| Job Type | PRODUCTION |
| Cement Type | HOLCIM TYPE I-II |
| Cement Weight | Light Weight |
| Test Date | 12/19/17 |
| Test Time | 08:36 PM |
| Temp. Units | degF |
| Pressure Units | PSI |
| SW Version | 2.1.0.507 |

| Events | Results |
|-----------|---------|
| 30.00 Bc | 03h:44m |
| 40.00 Bc | 03h:46m |
| 50.00 Bc | 03h:48m |
| 70.00 Bc | 04h:07m |
| 100.00 Bc | 10h:31m |
| 00h:30m | 8.26 |
| 01h:00m | 7.97 |
| 01h:30m | 7.87 |



Data File C:\Documents and Settings\M290\Local Settings\Temporary Internet Files\Content.IE5\4TIJ89YN\GJ2439170-1 LARAMIE PRODUCTION LEAD BULK[1].tdms

Comments CS3435 TR 1656 437 SKS CS3438 TR 8476 437 SKS

This report is the property of Halliburton Energy Services and neither it nor any part thereof, nor a copy thereof, is to be published or disclosed without first securing the expressed written approval of Halliburton. It may however be used in the course of regular business operations by any person or concern receiving such report from Halliburton. This report is for information purposes only and the content is limited to the sample described. Halliburton makes no warranties, expressed or implied, as to the accuracy of the contents or results. Any user of this report agrees Halliburton shall not be liable for any loss or damage regardless of cause, including any act or omission of Halliburton, resulting from the use hereof.

HALLIBURTON

Rockies, Grand Junction

Lab Results- Tail

Job Information

| | | | | | |
|----------------|----------------|----------|-------------------|------------|----------------|
| Request/Slurry | 2439171/2 | Rig Name | H&P 522 | Date | 18/DEC/2017 |
| Submitted By | Aaron Katz | Job Type | Production Casing | Bulk Plant | Grand Junction |
| Customer | Laramie Energy | Location | Garfield | Well | Bruton 30-15W |

Well Information

| | | | | | |
|-------------------|----------|-----------|---------|------|---------------|
| Casing/Liner Size | 4.5 in | Depth MD | 8251 ft | BHST | 116°C / 240°F |
| Hole Size | 7.875 in | Depth TVD | 7725 ft | BHCT | 78°C / 172°F |
| Pressure | 4720 psi | | | | |

Drilling Fluid Information

| | | | |
|-------------------|----------------|---------|-------------|
| Mud Supplier Name | Mud Trade Name | Density | 9.9 lbm/gal |
|-------------------|----------------|---------|-------------|

Cement Information - Tail Design



| Conc | UOM | Cement/Additive | Sample Type | Sample Date | Lot No. | Cement Properties | | |
|------|-----|-----------------|-------------|-------------|---------|-------------------|-------------|----------|
| | | ThermaCem | | | | Slurry Density | 13.3 | lbm/gal |
| | | | | | | Slurry Yield | 1.733 | ft3/sack |
| | | | | | | Water Requirement | 7.799 | gal/sack |
| | | | | | | Total Mix Fluid | 7.799 | gal/sack |
| | | | | | | Water Source | Fresh Water | |
| | | | | | | Water Chloride | | |

This report is the property of Halliburton Energy Services and neither it nor any part thereof, nor a copy thereof, is to be published or disclosed without first securing the expressed written approval of Halliburton. It may however be used in the course of regular business operations by any person or concern receiving such report from Halliburton. This report is for information purposes only and the content is limited to the sample described. Halliburton makes no warranties, expressed or implied, as to the accuracy of the contents or results. Any user of this report agrees Halliburton shall not be liable for any loss or damage regardless of cause, including any act or omission of Halliburton, resulting from the use hereof.

Operation Test Results Request ID 2439171/2

Thickening Time - ON-OFF-ON

20/DEC/2017

| Test Temp (degF) | Pressure (psi) | Reached in (min) | 30 Bc (hh:mm) | 50 Bc (hh:mm) | 70 Bc (hh:mm) | Start Bc | Stirring before stop (mins) | Static Period (min) | Peak reading (BC) | Termination time (hh:mm) | Termination Bc |
|------------------|----------------|------------------|---------------|---------------|---------------|----------|-----------------------------|---------------------|-------------------|--------------------------|----------------|
| 172 | 4720 | 49 | 3:22 | 3:32 | 3:51 | 23 | 59 | 15 | 18 | 4:30 | 73 |

CS3442 TR 7094 100 SKS

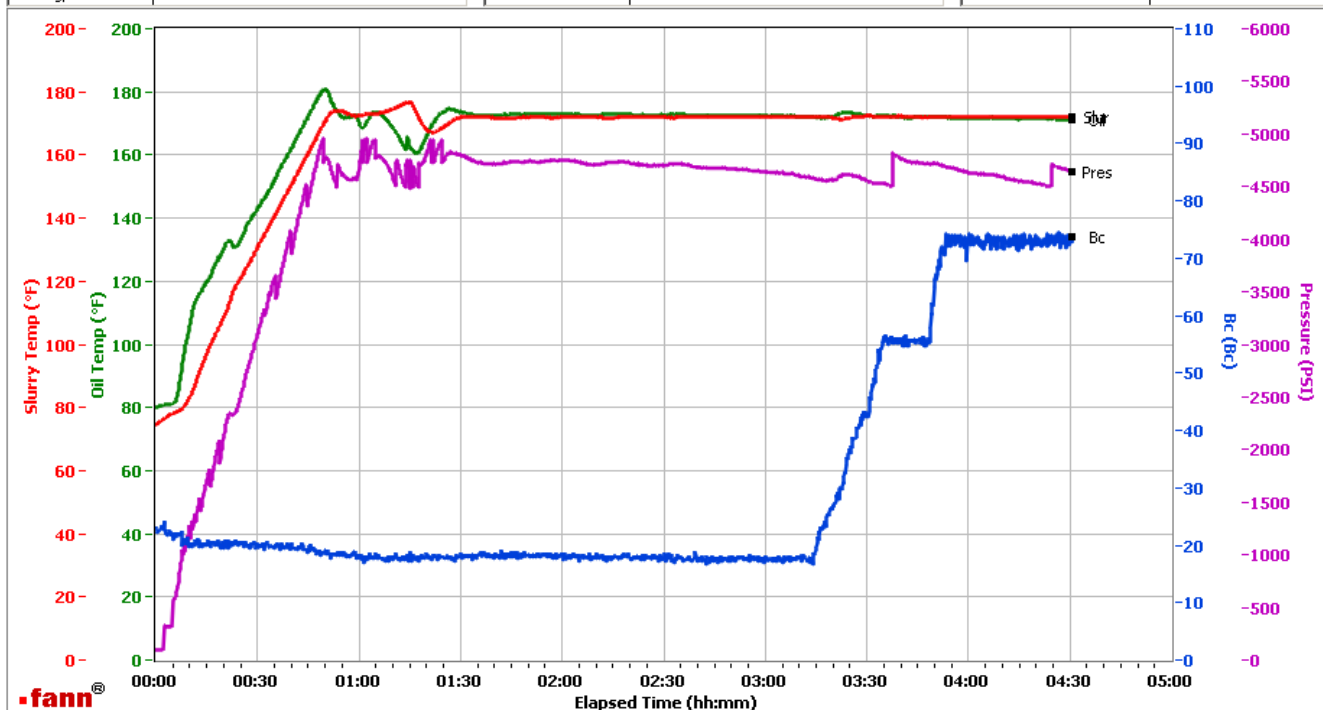
No deflection. Test pulled per Engineer.

Grand Junction Colorado

| Fields | Values |
|-------------------|--------------------------------------|
| Project Name | 2439171-2 LARAMIE BULK PRODUCTION TA |
| Test ID | 35119994 - TT |
| Request ID | 2439171-2 |
| Tested by | CT |
| Customer | LARAMIE ENERGY |
| Well No | BRUTON 30-15W |
| Rig | H&P 522 |
| Casing/Liner Size | 4.5 INCH |

| Fields | Values |
|----------------|-------------------|
| Job Type | PRODUCTION CASING |
| Cement Type | MOUNTAIN G |
| Cement Weight | Standard |
| Test Date | 01/27/11 |
| Test Time | 12:33 PM |
| Temp. Units | degF |
| Pressure Units | PSI |
| SW Version | 2.1.0.1219 |

| Events | Results |
|-----------|---------|
| 30.00 Bc | 03h:22m |
| 40.00 Bc | 03h:27m |
| 50.00 Bc | 03h:32m |
| 70.00 Bc | 03h:51m |
| 100.00 Bc | NaN |
| 00h:30m | 20.01 |
| 01h:00m | 17.67 |
| 01h:30m | 18.58 |



Data File C:\Documents and Settings\HPHT\Desktop\Test Data\GJ2439171-2 LARAMIE BULK PRODUCTION TAIL.tdms

Comments CS3442 TR 7094 100 SKS

This report is the property of Halliburton Energy Services and neither it nor any part thereof, nor a copy thereof, is to be published or disclosed without first securing the expressed written approval of Halliburton. It may however be used in the course of regular business operations by any person or concern receiving such report from Halliburton. This report is for information purposes only and the content is limited to the sample described. Halliburton makes no warranties, expressed or implied, as to the accuracy of the contents or results. Any user of this report agrees Halliburton shall not be liable for any loss or damage regardless of cause, including any act or omission of Halliburton, resulting from the use hereof.

Operation Test Results Request ID 2439171/1

Thickening Time - ON-OFF-ON

20/DEC/2017

| Test Temp (degF) | Pressure (psi) | Reached in (min) | 30 Bc (hh:mm) | 50 Bc (hh:mm) | 70 Bc (hh:mm) | 100 Bc (hh:mm) | Start Bc | Stirring before stop (mins) | Static Period (min) | Peak reading (BC) |
|------------------|----------------|------------------|---------------|---------------|---------------|----------------|----------|-----------------------------|---------------------|-------------------|
| 172 | 4720 | 49 | 3:00 | 3:18 | 3:51 | 4:04 | 11 | 59 | 15 | 11 |

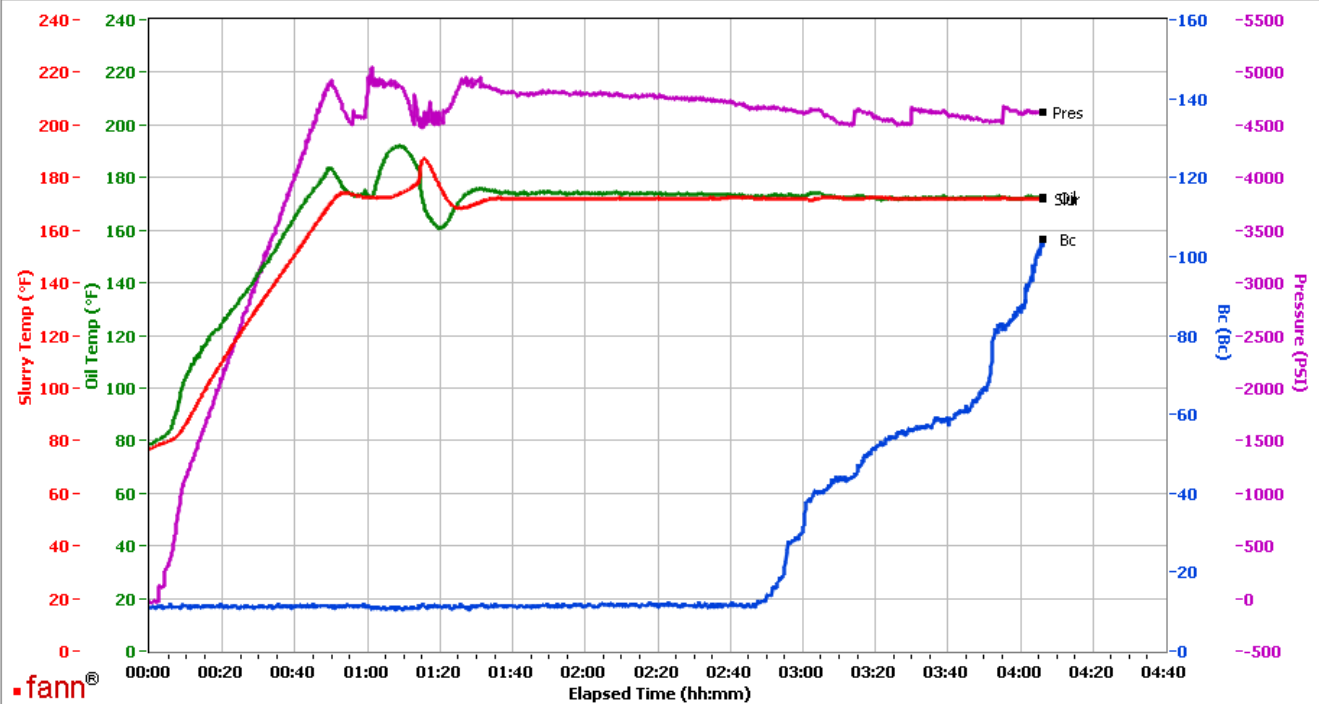
total sks = 461

CS3439 TR 8658 361 SKS

Deflection: 11 - 11

Grand Junction, Colorado

| Fields | Values | Fields | Values | Events | Results |
|-------------------|---------------------------------------|----------------|--------------|-----------|---------|
| Project Name | GJ2439171-1 LARAMIE PRODUCTION TAIL E | Job Type | PRODUCTION | 30.00 Bc | 03h:00m |
| Test ID | 35114311 | Cement Type | MOUNTAIN G | 40.00 Bc | 03h:03m |
| Request ID | 2439171-1 | Cement Weight | Light Weight | 50.00 Bc | 03h:18m |
| Tested by | JASON | Test Date | 12/20/17 | 70.00 Bc | 03h:51m |
| Customer | LARAMIE ENERGY | Test Time | 06:23 AM | 100.00 Bc | 04h:04m |
| Well No | BRUTON 30-15W | Temp. Units | degF | 00h:30m | 11.68 |
| Rig | H&P 522 | Pressure Units | PSI | 01h:00m | 11.79 |
| Casing/Liner Size | 4.5" | SW Version | 2.1.0.507 | 01h:30m | 11.48 |



Data File C:\Documents and Settings\M290\Local Settings\Temporary Internet Files\Content.IE5\K9YZ0P2R\GJ2439171-1 LARAMIE PRODUCTION TAIL BULK[1].tdms

Comments CS3439 TR 8658 361 SKS

This report is the property of Halliburton Energy Services and neither it nor any part thereof, nor a copy thereof, is to be published or disclosed without first securing the expressed written approval of Halliburton. It may however be used in the course of regular business operations by any person or concern receiving such report from Halliburton. This report is for information purposes only and the content is limited to the sample described. Halliburton makes no warranties, expressed or implied, as to the accuracy of the contents or results. Any user of this report agrees Halliburton shall not be liable for any loss or damage regardless of cause, including any act or omission of Halliburton, resulting from the use hereof.