



BOREHOLE PROFILE LOG

FILE NO:

COMPANY

LARAMIE ENERGY

WELL

BRUTON 30-14E

API NO:

FIELD

VEGA

05077104710000

COUNTY

MESA

STATE COLORADO

Version

LOCATION:

SHL: 2606' FNL & 1874' FEL
BHL: 1867' FSL & 1333' FELOTHER SERVICES
HDIL/ZD/CN

SEC 30 TWP 9S RGE 93W

PERMANENT DATUM GL ELEVATION 7642 FT
LOG MEASURED FROM KB 30 FT ABOVE P.D.
DRILL. MEAS. FROM KBELEVATIONS:
KB 7672 FT
DF
GL 7642 FT

DATE 13-Dec-2017

RUN TRIP

1 1

SERVICE ORDER

5US1307050

DEPTH DRILLER

7897 FT

DEPTH LOGGER

7903 FT

BOTTOM LOGGED INTERVAL

7903 FT

TOP LOGGED INTERVAL

0 FT

CASING DRILLER

8.625 IN @ 1555 FT

CASING LOGGER

1553 FT

BIT SIZE

7.875 IN

TYPE OF FLUID IN HOLE

LSND

DENSITY

9.9 LB/G

80 S

PH

9.1

6.9 C3

SOURCE OF SAMPLE

FLOWLINE

RM AT MEAS. TEMP.

1.24 OHMM @ 67.54 DEGF

RM AT MEAS. TEMP.

0.93 OHMM @ 67.54 DEGF

RMC AT MEAS. TEMP.

1.545 OHMM @ 67.54 DEGF

SOURCE OF RMF

RMC

CALCULATED

RM AT BHT

0.51 OHMM @ 203 DEGF

TIME SINCE CIRCULATION

10 HOURS

MAX. RECORDED TEMP.

203 DEGF

EQUIP. NO.

HL6670

GRAND JCT.

RECORDED BY

T. NEWELL

WITNESSED BY

TYLER HALE

IN MAKING INTERPRETATIONS OF LOGS OUR EMPLOYEES WILL GIVE THE CUSTOMER THE BENEFIT OF THEIR BEST JUDGEMENT. BUT SINCE ALL INTERPRETATIONS ARE OPINIONS BASED ON INFERENCES FROM ELECTRICAL OR OTHER MEASUREMENTS, WE CANNOT, AND WE DO NOT GUARANTEE THE ACCURACY OR CORRECTNESS OF ANY INTERPRETATION. WE SHALL NOT BE LIABLE OR RESPONSIBLE FOR ANY LOSS, COST, DAMAGES, OR EXPENSES WHATSOEVER INCURRED OR SUSTAINED BY THE CUSTOMER RESULTING FROM ANY INTERPRETATION MADE BY ANY OF OUR EMPLOYEES.

REMARKS

RUN 1 TRIP 1: CVOL AND BVOL CALCULATED IN CUBIC FEET

CVOL CALCULATED USING 4.5" 11.6# CASING AND 7.875" BIT

RIG: H&P 522

CREW: J. PENA, C. BAYNE, A. SHAHNOOSHI

EQUIPMENT DATA

RUN	TRIP	TOOL	SERIES NO.	SERIAL NO.	POSITION
1	1	TTRM	3981XA	10045153	FREE
1	1	TEL	3514XB	10226222	FREE
1	1	DGR	1329XA	179184	FREE
1	1	CN	2446XA	10378389	DECENTRALIZED
1	1	ZDL	2234XA	10231795	PAD DEVICE
1	1	KNUCKLE	3939XA	167176	FREE
1	1	HDIL	1515EA/MA	10174847/179533	FREE

BOREHOLE PROFILE

ECLIPS 7.0w PC-ECLIPS General Release Rel 7.0w Fri Jun 09 11:02:06 Central Daylight Time 2017
Patches: 2

Plotted: Thu Dec 14 00:03:28 2017

PARAMETER AND FILTER SUMMARY REPORT

FILE: C:\dat1a\WELLDATA\Laramie\Bruton 30-14E\p87cb02.prm
LOGGING MODE: DEPTH DIRECTION: UP
TOP DEPTH: 1458.250 ft BOTTOM DEPTH: 7913.729 ft

SYMMETRIC FILTER

MEASUREMENT TYPE	PARAMETER	VALUE	UNITS	INTERVAL (ft)	
Y AXIS CALIPER	FILTER ()	medium (1)		TOP	BOTTOM
TENSION	FILTER ()	medium (1)		"	"
CALIPER	FILTER ()	medium (1)		"	"
	FILTER (.h)	medium (1)		"	"
	FILTER (.i)	medium (1)		"	"
SP-SPDH	FILTER ()	medium (1)		"	"
GR	FILTER ()	medium (1)		"	"

BOREHOLE & CEMENT

MEASUREMENT TYPE	PARAMETER	VALUE	UNITS	INTERVAL (ft)	
CASING - BOREHOLE & CEMENT VOLUME	CASING O.D.	4.500	in	TOP	BOTTOM
BIT SIZE	BIT SIZE	7.875	in	"	"

CURVE DESCRIPTION REPORT

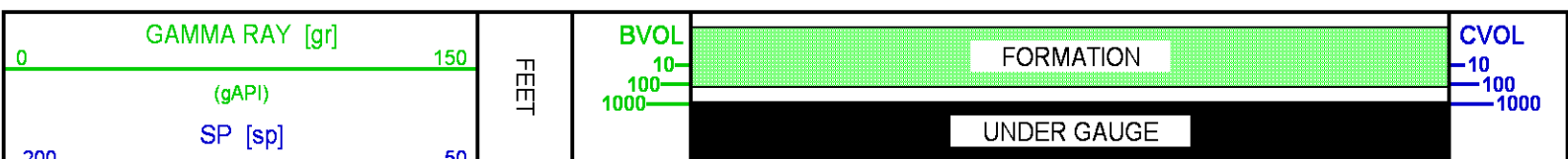
CURVE NAME	CREATION DATE	CURVE DESCRIPTION
F1:BIT	N/A	BIT SIZE
F1:BVOL	N/A	BOREHOLE VOLUME
F1:CAL	N/A	CALIPER
F1:CVOL	N/A	CEMENT VOLUME
F1:GR	N/A	GAMMA RAY
F1:SP	N/A	SPONTANEOUS POTENTIAL
F1:TEN	N/A	DIFFERENTIAL TENSION

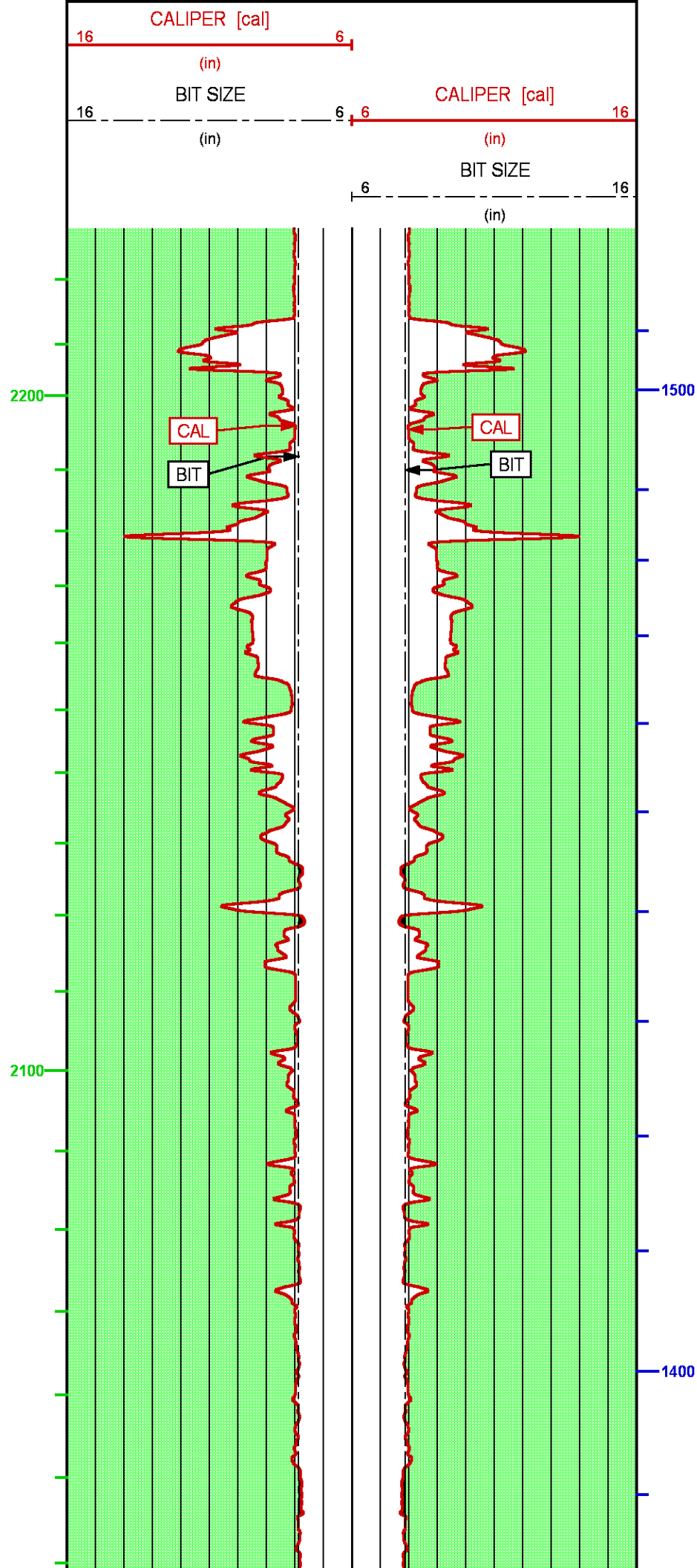
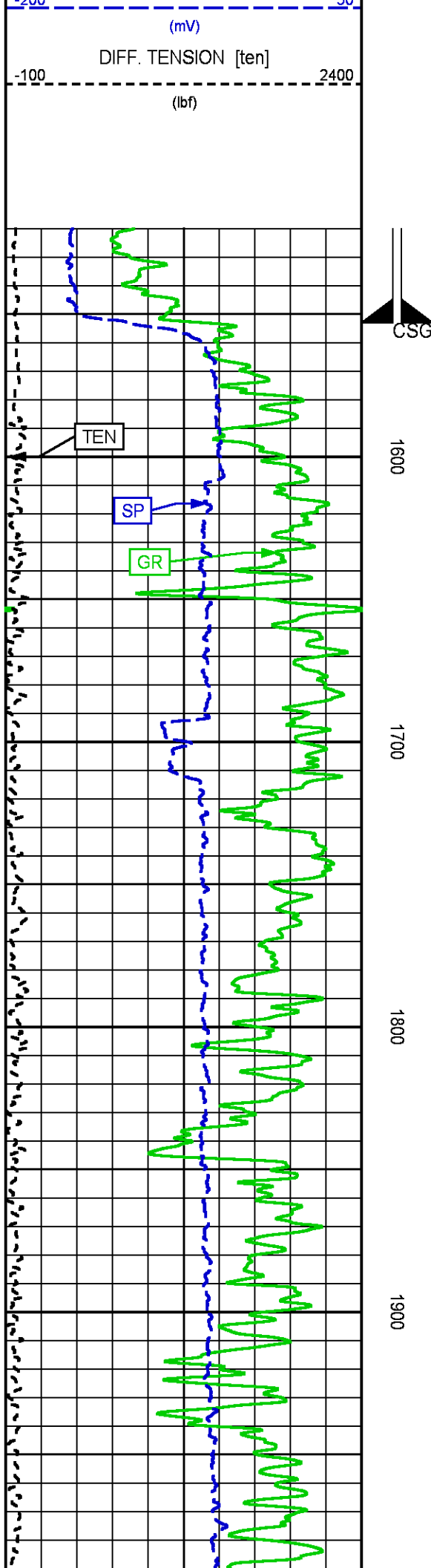
CURVE MEASURE POINT OFFSET

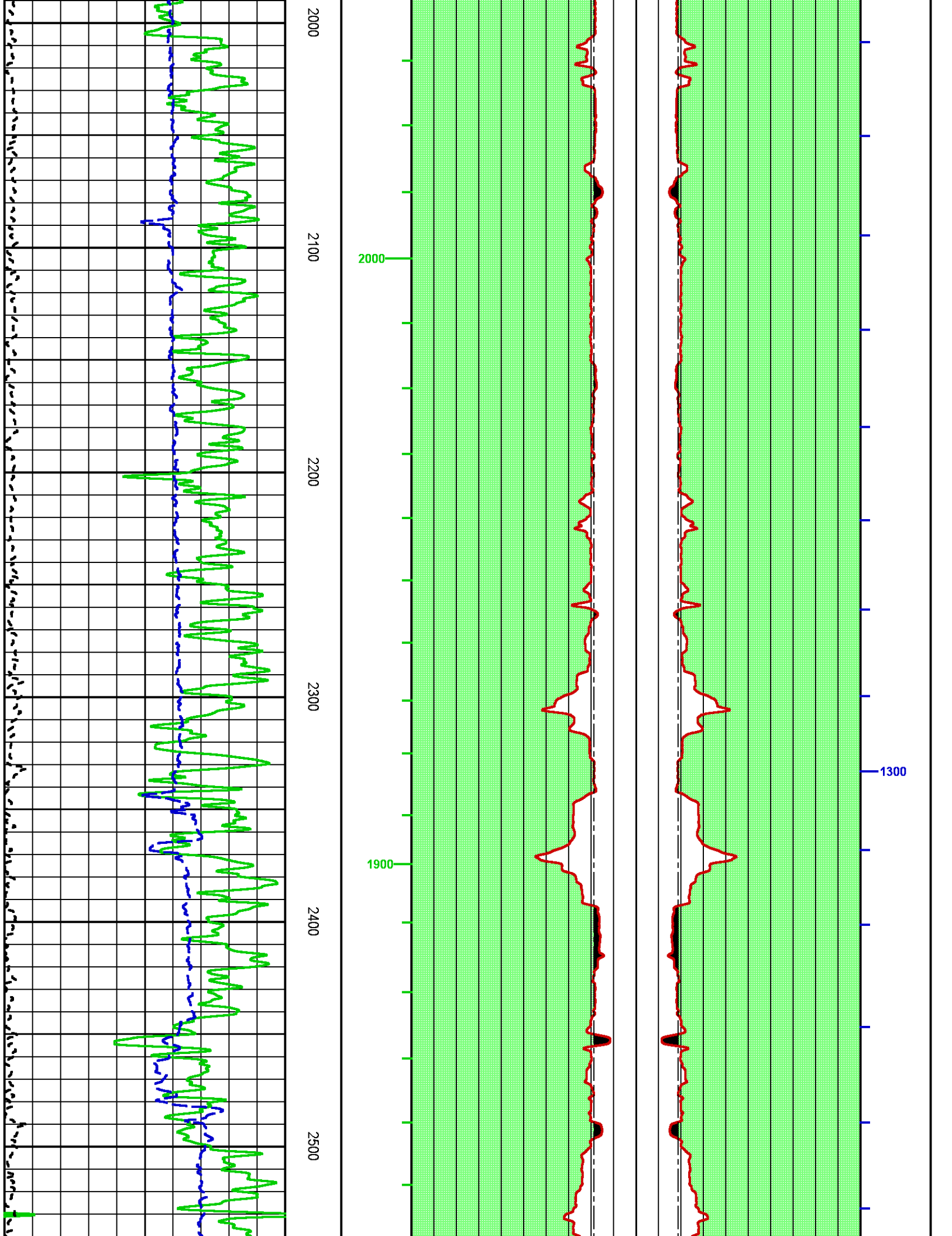
CURVE	OFFSET (ft)	CURVE	OFFSET (ft)	CURVE	OFFSET (ft)	CURVE	OFFSET (ft)
BIT	0.00	GR	-52.25	TEN	0.00		
CAL	-35.00	SP	-14.00				

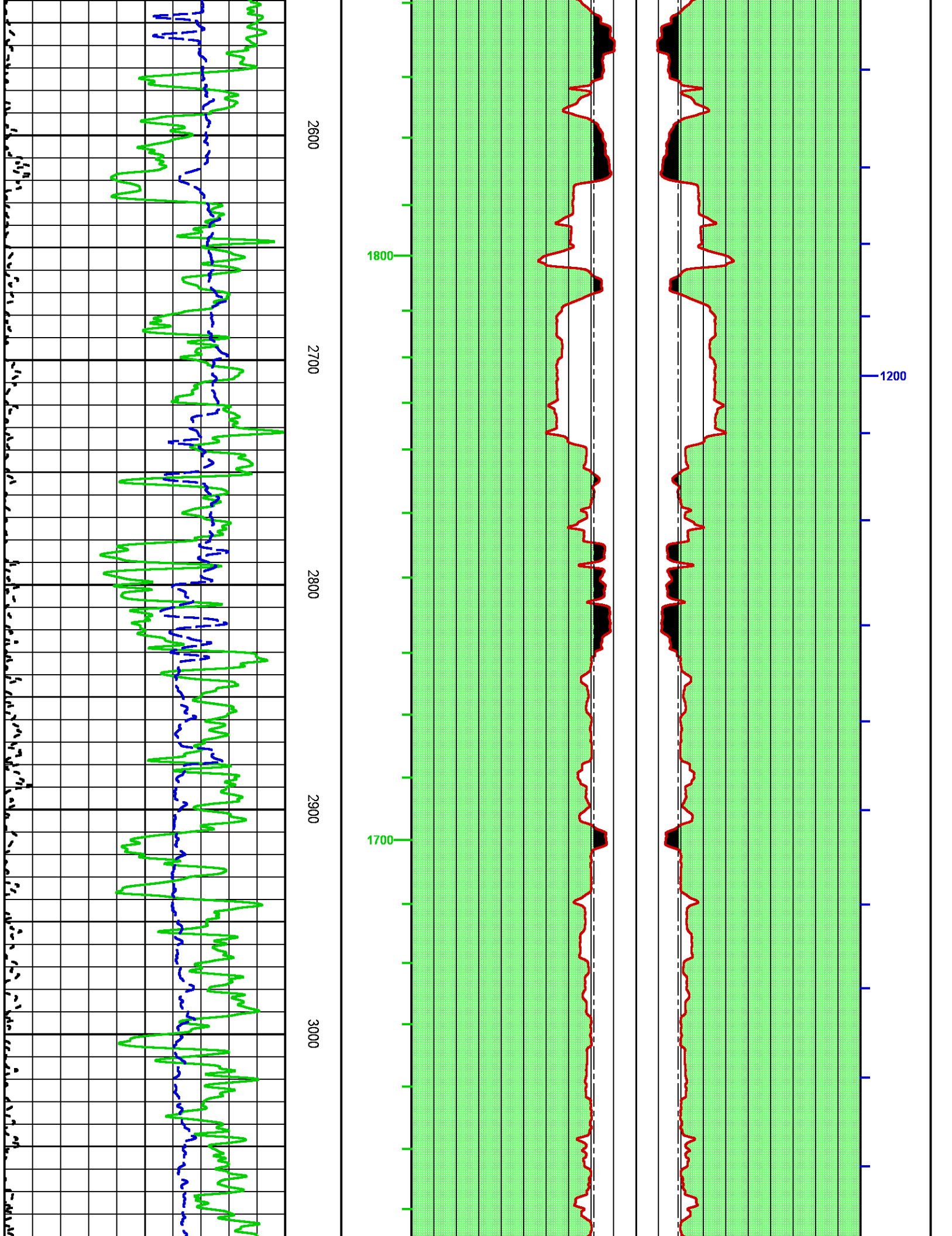
Presentation : BHIBX9FSY1:C:\dat1a\WELLDATA\Laramie\Bruton 30-14E\30-14E_BHP_MAIN.fvpdf [2"/100' Scale]
Plot Interval : 1520 - 7930 Feet

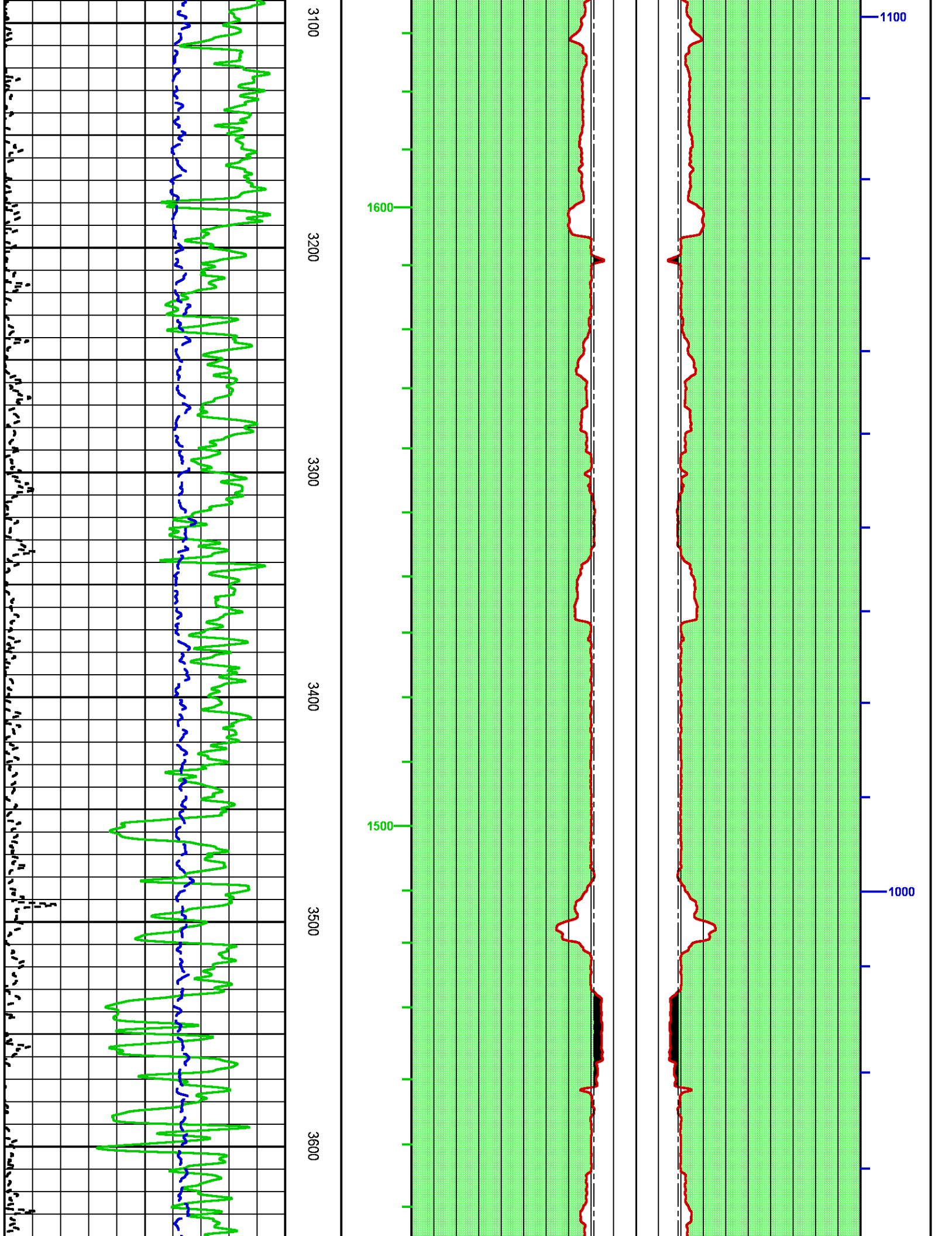
Data File 1 : F1 : BHIBX9FSY1:C:\dat1a\WELLDATA\Laramie\Bruton 30-14E\30-14E_HDILZDLCN_MAIN.xtf
Created On : N/A
Company : LARAMIE ENERGY
Well : BRUTON 30-14E
Field : VEGA
File Interval : -13.75 - 7931.5 Feet
OCT : p87cb

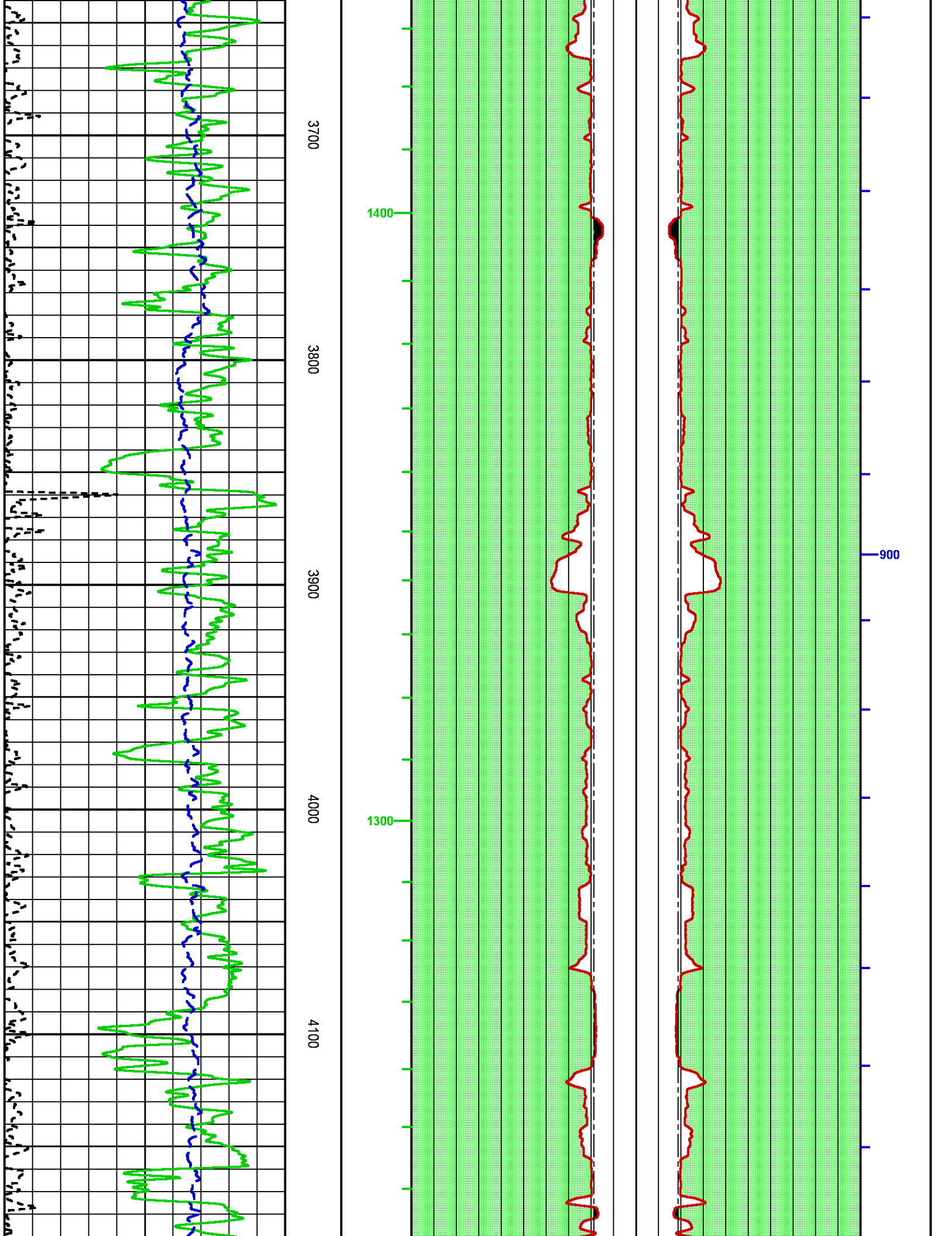


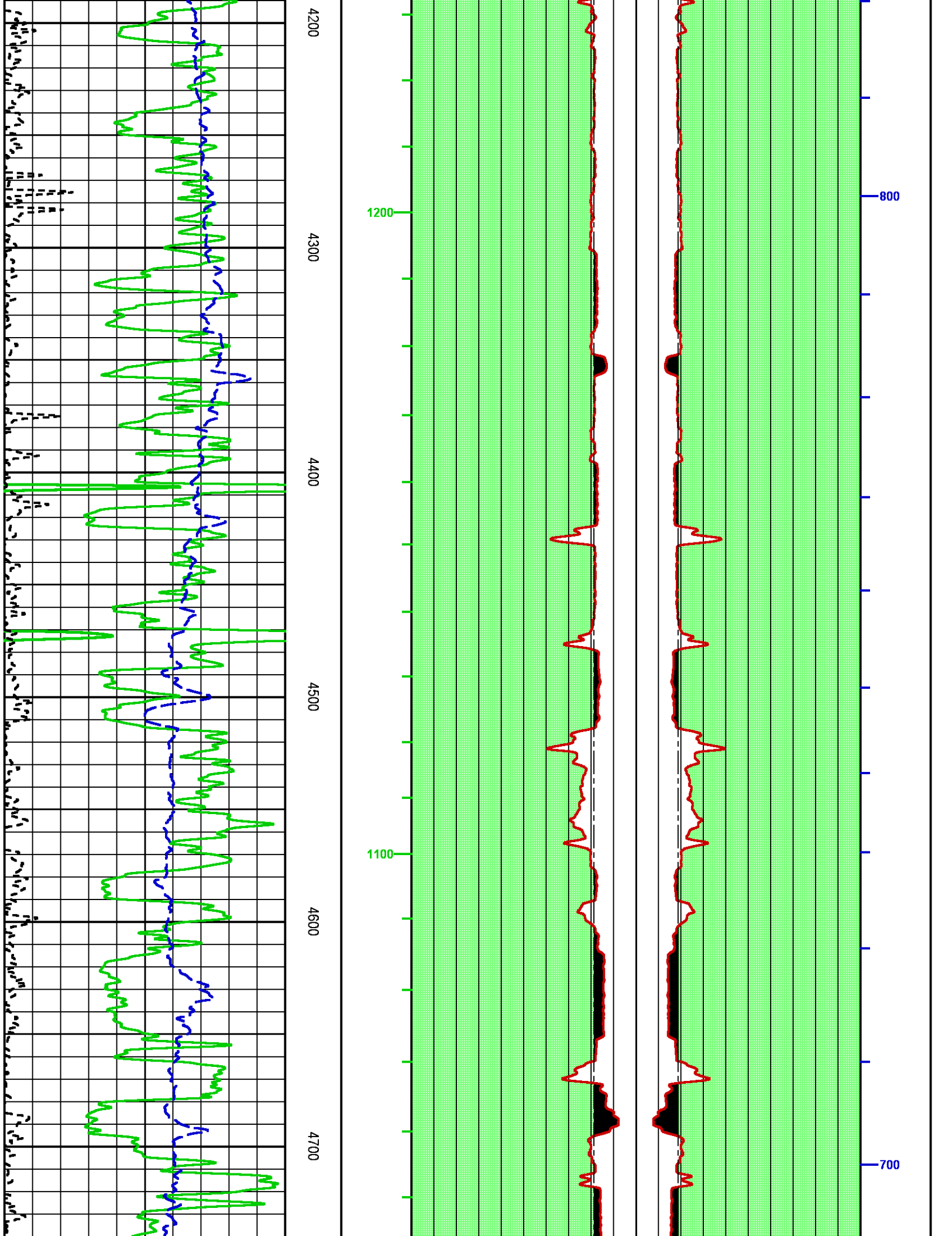


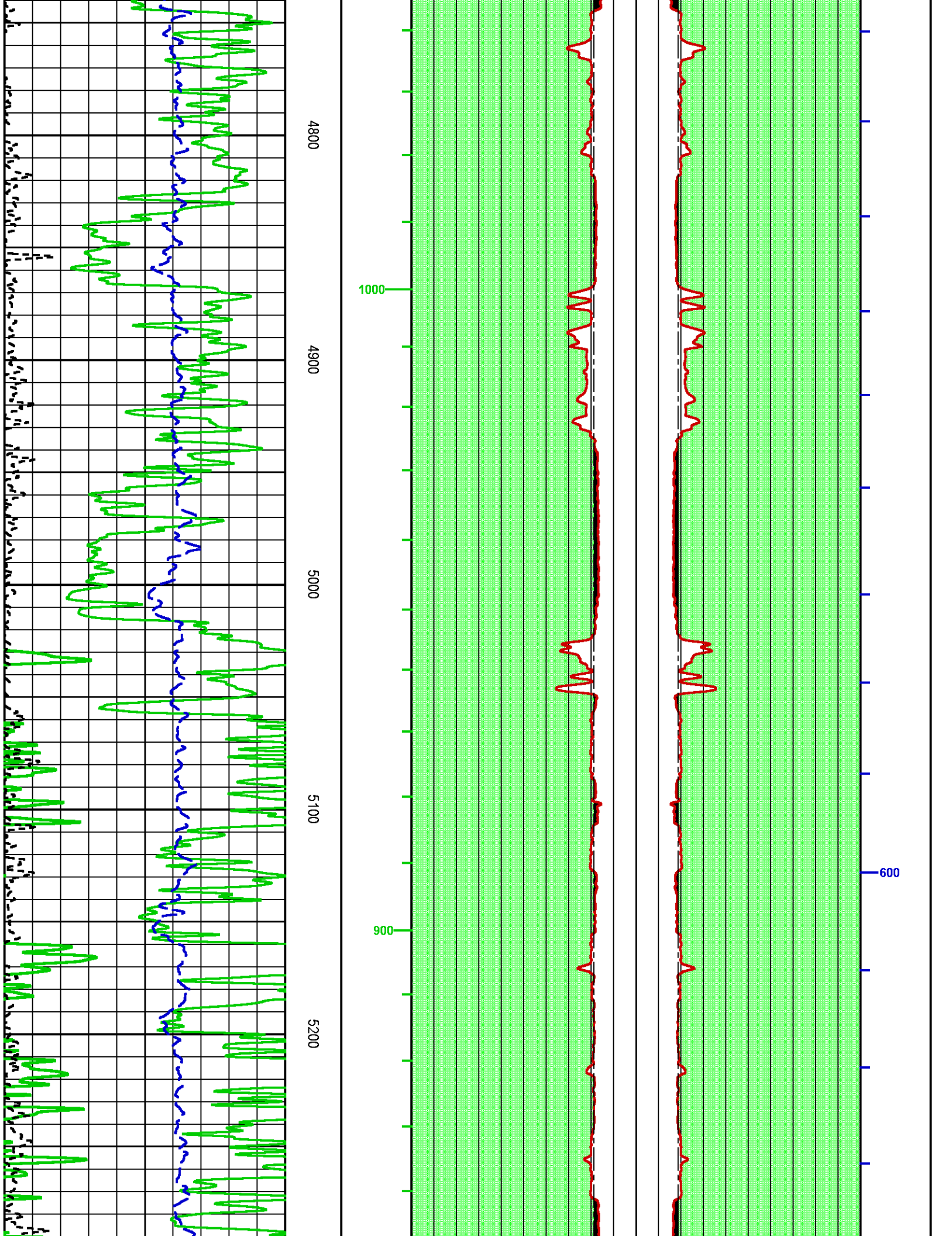


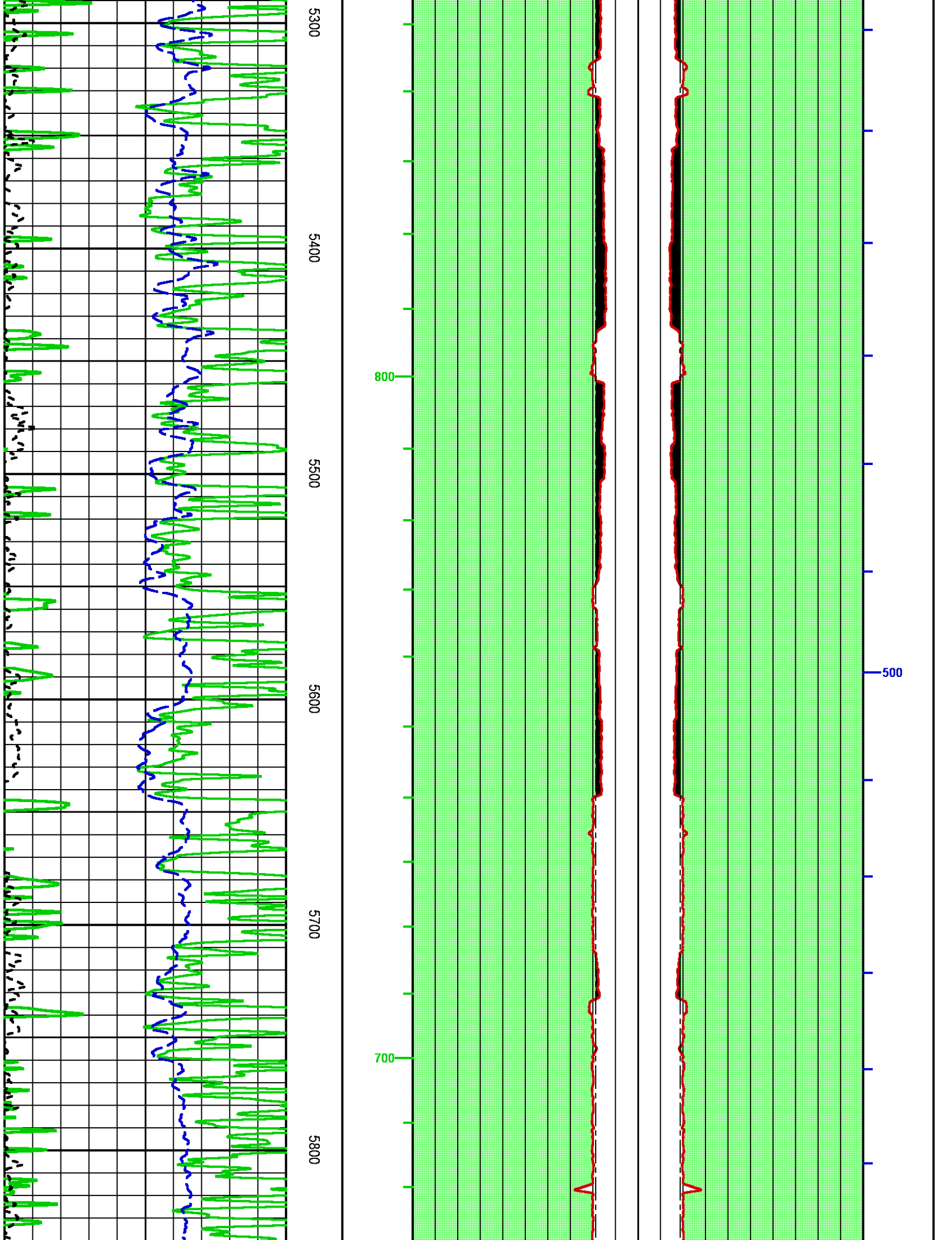


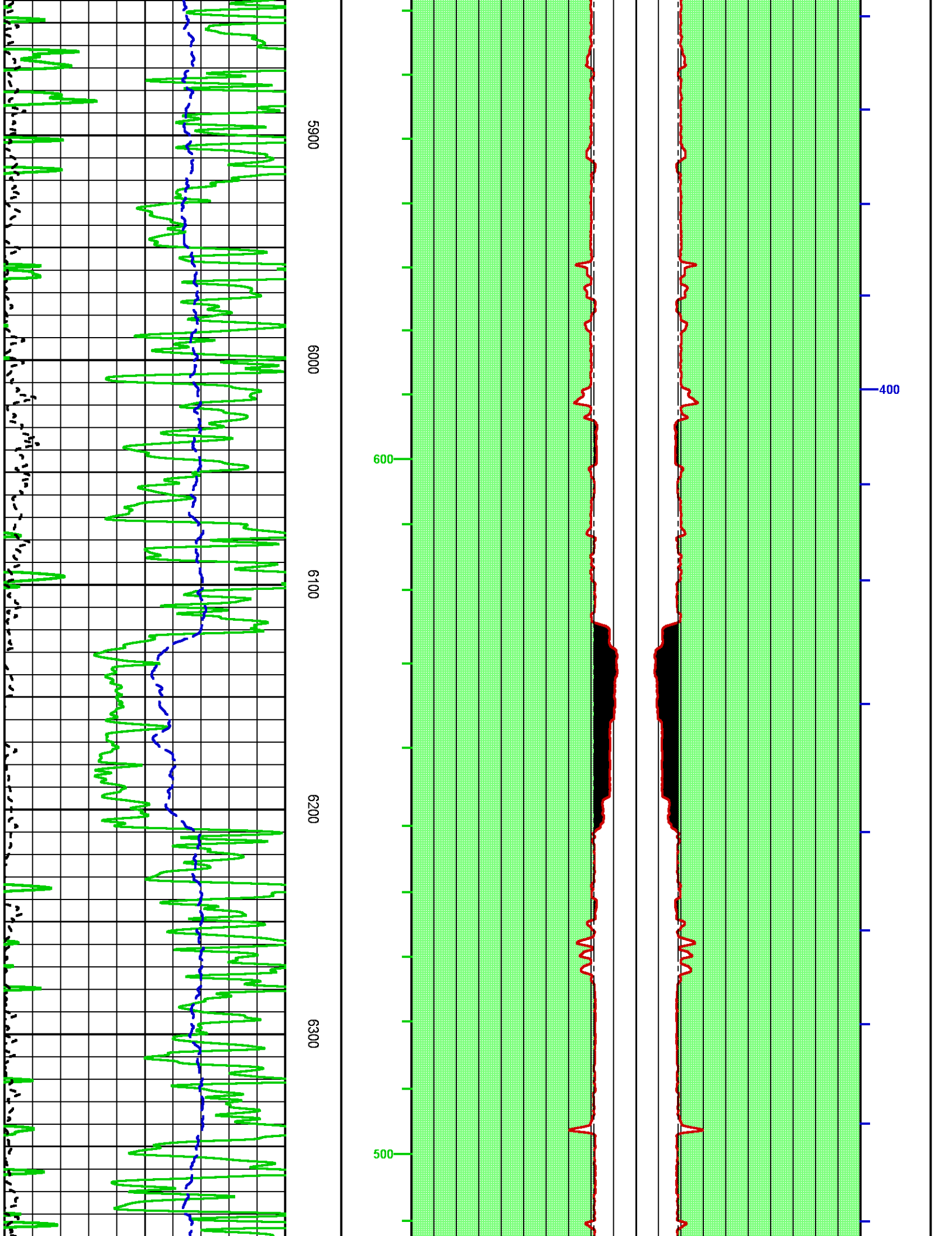


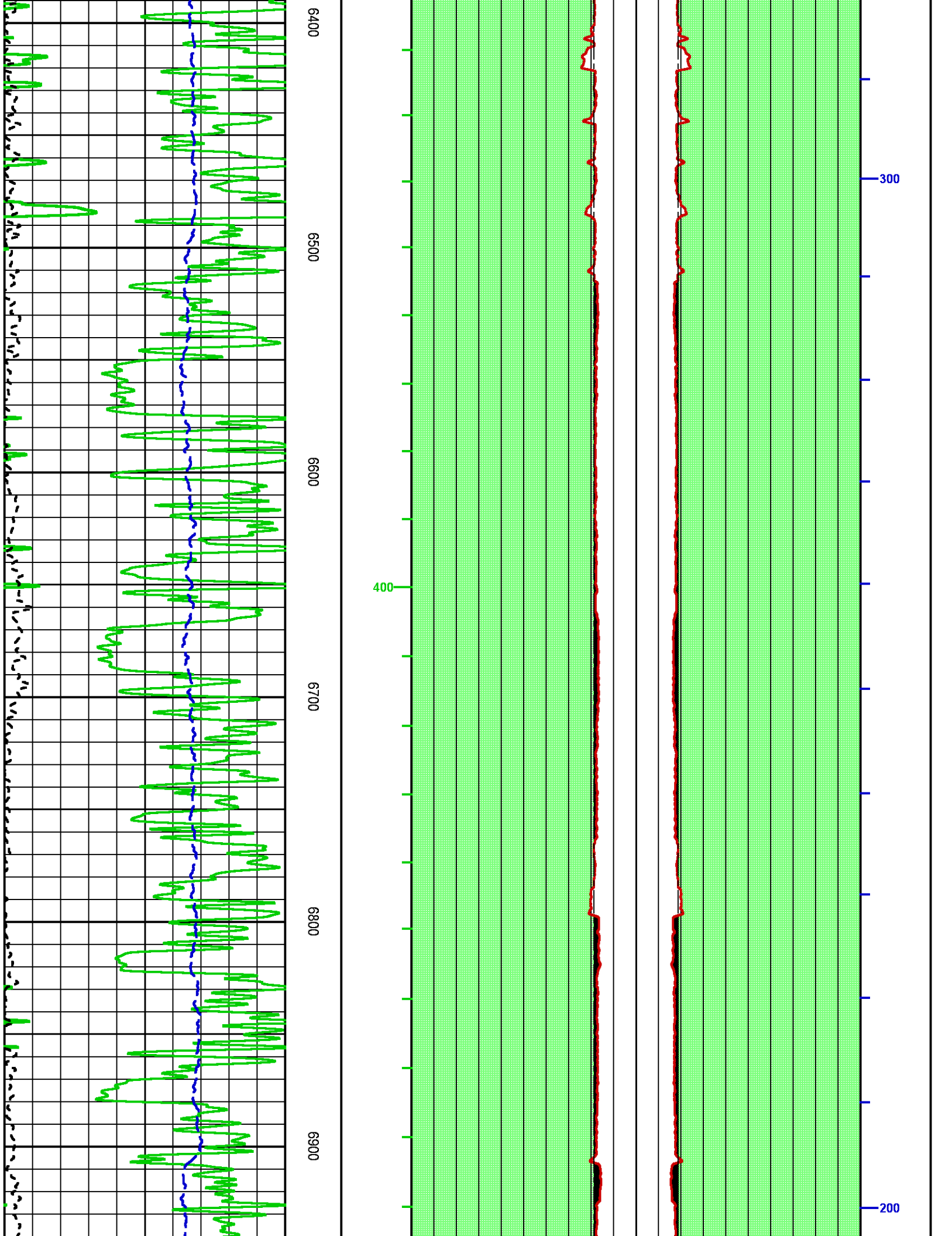


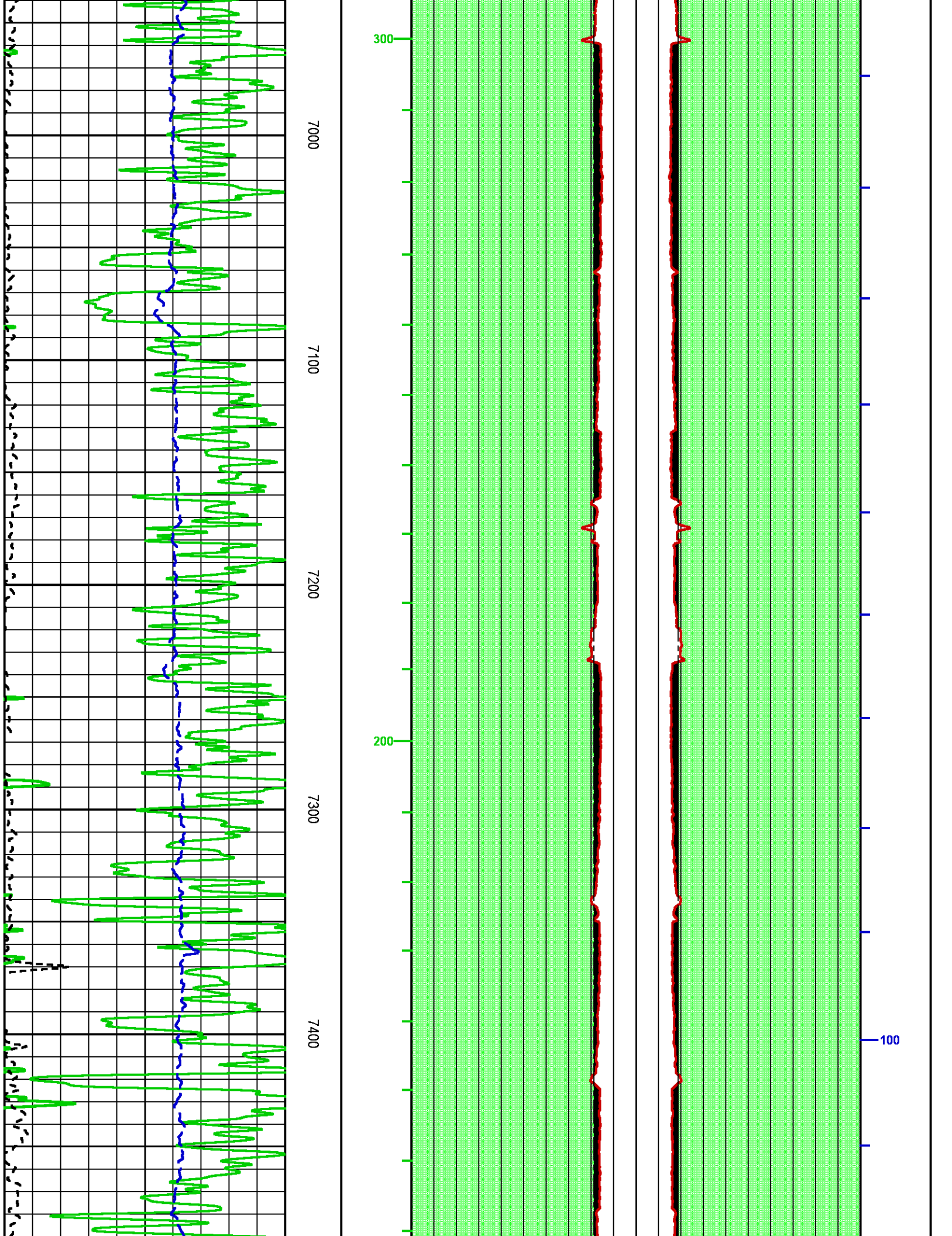


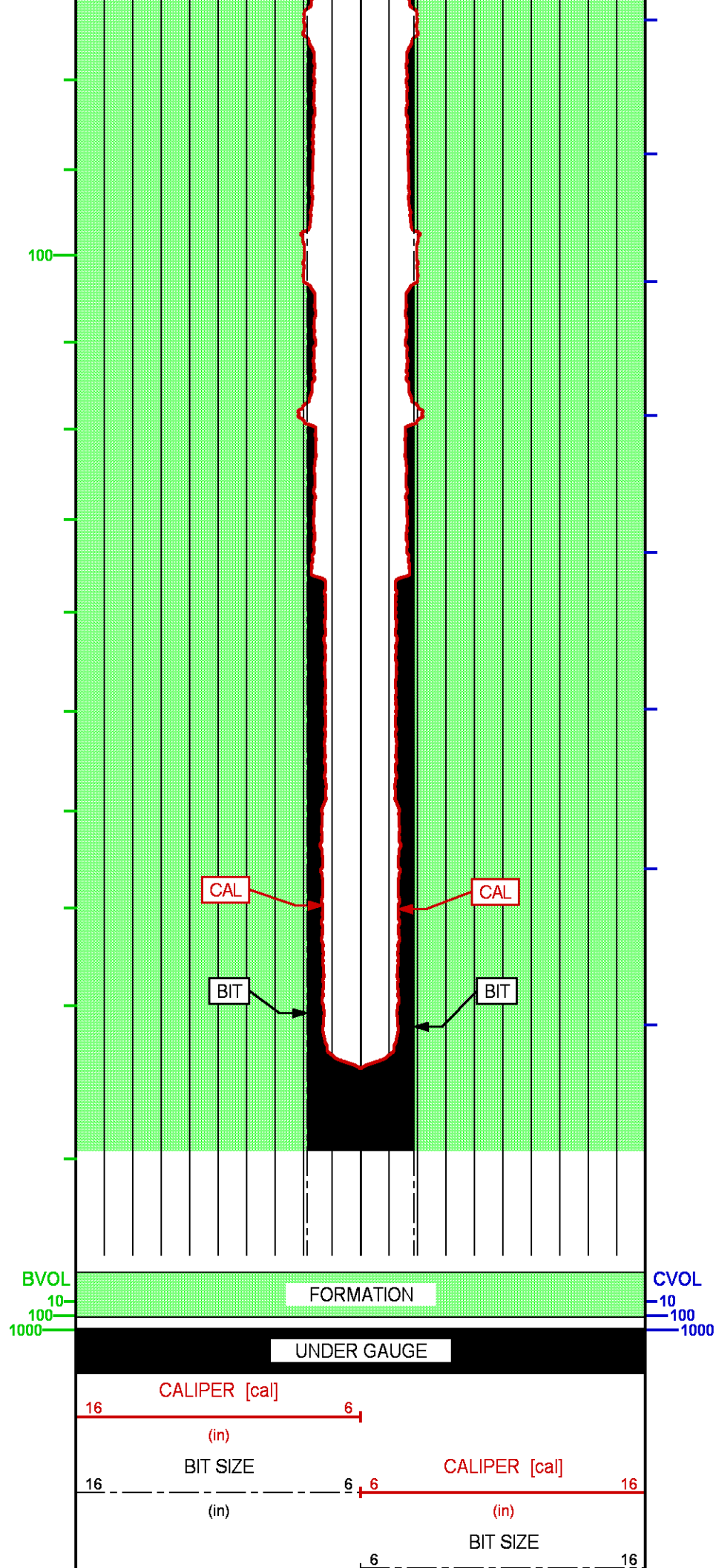
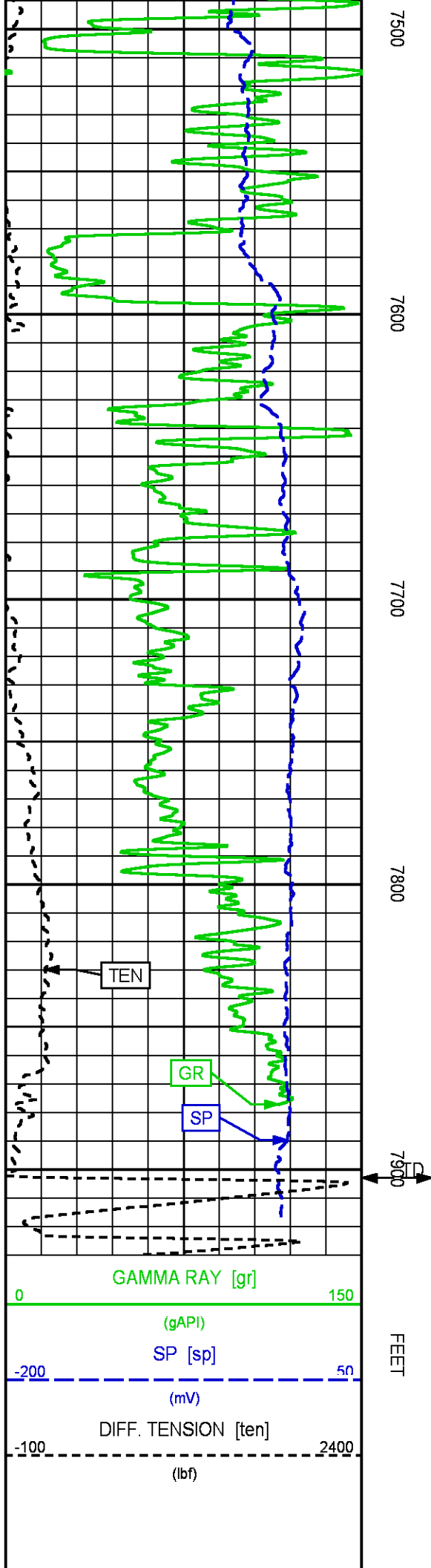












CALIBRATION / VERIFICATION SUMMARY

GR PRIMARY CALIBRATION SUMMARY

TOOL #: 1329XA 179184

DATE/TIME PERFORMED: Tue Nov 14 10:09:58 2017

UNIT #: 3882TD HL6728

CALB JIG #: 4702NK DA_228

	BACKGROUND (cts/s)	CALBRTR ON (cts/s)	CR DIFF (cts/s)	MULT	BACKGROUND (gAPI)	CALBRTR ON (gAPI)	CALBRTR (gAPI)
GR	153.51	1097.33	943.8	0.159	24.40	174.40	150

GR PRIMARY VERIFICATION SUMMARY

TOOL #: 1329XA 179184

DATE/TIME PERFORMED: Tue Nov 14 10:16:15 2017

UNIT #: 3882TD HL6728

VERI JIG #: 4702NK DA_228

	BACKGROUND (cts/s)	CALBRTR ON (cts/s)	MULT	BACKGROUND (gAPI)	CALBRTR ON (gAPI)	DIFF. (gAPI)
GR	151.36	1095.47	0.159	24.05	174.10	150.05

CAL PRIMARY CALIBRATION SUMMARY

TOOL #: 2234XA 10231795

DATE/TIME PERFORMED: Tue Nov 14 16:11:44 2017

UNIT #: 3882TD HL6728

	SMALL RING	LARGE RING	MULT	ADD	SMALL RING (in)	LARGE RING (in)
CALIPER	1230.8	2125.6	0.00796	-1.92546	7.875	15.000

CAL BEFORE LOG VERIFICATION SUMMARY

TOOL #: 2234XA 10231795

DATE/TIME PERFORMED: Wed Dec 13 18:29:57 2017

DAYS SINCE CAL: 29

UNIT #: CHANGE ME

I.D.

MULT

ADD

I.D.

(in)

CALIPER	1372.0	0.00796	-2.90779	8.017
---------	--------	---------	----------	-------

CAL AFTER LOG VERIFICATION SUMMARY

TOOL #: 2234XA 10231795 DATE/TIME PERFORMED: Wed Dec 13 21:54:25 2017 DAYS SINCE CAL: 29

UNIT #: CHANGE ME

	I.D.	MULT	ADD	I.D. (in)
CALIPER	1369.2	0.00796	-2.90779	7.995

INSTRUMENT CONFIGURATION

CABLEHEAD

Diameter : 3.38"
 Length : 5.50'
 Weight : 24 lbs
 Series : CABL338
 Mnemonic : CBLH
 Measure Point: 2.75': CABLEHEAD TOP

73.88'

CABLEHEAD TOP 71.13'

TTRM SUB

Diameter : 3.63"
 Length : 3.83'
 Weight : 62 lbs
 Series : 3981XA
 Mnemonic : TTRM
 Measure Point: 1.38': TEMP MP
 Measure Point: 1.13': RM MP

TEMP MP 65.93'
 RM MP 65.68'

WTS COMMON REMOTE

Diameter : 3.63"
 Length : 6.36'
 Weight : 126 lbs
 Series : 3514XB
 Mnemonic : WTS

DIGITAL SPECTRALOG

Diameter : 3.63"
Length : 7.31'
Weight : 130 lbs
Series : 1329XA
Mnemonic : DSL
Measure Point: 1.60': GR MP

GR MP — 52.48'

COMPENSATED NEUTRON

Diameter : 3.63"
Length : 7.59'
Weight : 150 lbs
Series : 2446XA
Mnemonic : CN
Measure Point: 2.63': LSN MP
Measure Point: 2.24': SSN MP

LSN MP — 45.92'

SSN MP — 45.52'

Z-DENSILOG

Diameter : 4.88"
Length : 11.22'
Weight : 360 lbs
Series : 2234XA
Mnemonic : ZDL
Measure Point: 3.19': CAL MP
Measure Point: 2.47': LSD MP
Measure Point: 2.07': SSD MP

CAL MP — 35.26'

LSD MP — 34.54'

SSD MP — 34.14'

KNUCKLE JOINT (DOUBLE)

Diameter : 3.38"
Length : 4.65'
Weight : 90 lbs
Series : 3939XA
Mnemonic : KNJT

HIGH DEFINITION INDUCTION TOOL

Diameter : 3.63"
Length : 27.13'
Weight : 415 lbs
Series : 1515XA
Mnemonic : HDIL
Measure Point: 13.91': SP MP
Measure Point: 7.44': XMTR MP

SP MP 14.19'

XMTR MP 7.72'

BULL PLUG 3 3/8

0.00'

TOTAL LENGTH: 73.88'
TOTAL WEIGHT: 1374 lbs
MAX DIAMETER: 0'4.88"

**BAKER
HUGHES**
a GE company



ECLIPS

COMPANY

LARAMIE ENERGY

WELL

BRUTON 30-14E

FIELD

VEGA

COUNTY

MESA

STATE COLORADO

FILE NO:

API NO:

05077104710000

LOCATION:

SHL: 2606' FNL & 1874' FEL

BHL: 1867' FSL & 1333' FEL

ELEVATIONS:

KB 7672 FT

DF

GL 7642 FT

SEC 30

TWP 9S

RGE 93W

DATE

13-Dec-2017