



FILE NO: CH132062	COMPANY LARAMIE ENERGY LLC
API NO: 05077104780000	WELL BRUTON 30-14W
	FIELD VEGA
	COUNTY MESA STATE COLORADO

Version	LOCATION: SHL: 2611' FNL & 1883' FEL BHL: 1908' FSL & 1310' FWL SEC <u>30</u> TWP <u>9S</u> RGE <u>93W</u>	OTHER SERVICES RAL
---------	---	-----------------------

PERMANENT DATUM	GL	ELEVATION	7643 FT
LOG MEASURED FROM	KB	30 FT	ABOVE P.D.
DRILL. MEAS. FROM	KB		
		ELEVATIONS:	KB 7673 FT DF GL 7643 FT

DATE	05-Feb-2018		
RUN	TRIP	1	1
SERVICE ORDER	US132062		
DEPTH DRILLER	8102 FT		
DEPTH LOGGER	8040 FT		
BOTTOM LOGGED INTERVAL	8040 FT		
TOP LOGGED INTERVAL	2536 FT		
TIME STARTED	14:30		
TIME FINISHED	20:00		
OPERATOR RIG TIME	5.5 HOURS		
TYPE OF FLUID IN HOLE	WATER		
FLUID DENSITY	NA		
FLUID SALINITY	NA		
FLUID LEVEL	53 FT		
LOGGED CEMENT TOP	1020 FT		
WELLHEAD PRESSURE	0 PSI		
MAXIMUM HOLE DEVIATION	NA		
NOMINAL LOGGING SPEED	10 FMIN		
MAX. RECORDED TEMP.	234 DEGF		
REFERENCE LOG	BAKER HUGHES RAL		
REFERENCE LOG DATE	02-Feb-2018		
EQUIP. NO.	LOCATION	ML-4291	GRAND JCT.
RECORDED BY	T. NEWELL		
WITNESSED BY	NA		

IN MAKING INTERPRETATIONS OF LOGS OUR EMPLOYEES WILL GIVE THE CUSTOMER THE BENEFIT OF THEIR BEST JUDGEMENT. BUT SINCE ALL INTERPRETATIONS ARE OPINIONS BASED ON INFERENCES FROM ELECTRICAL OR OTHER MEASUREMENTS, WE CANNOT, AND WE DO NOT GUARANTEE THE ACCURACY OR CORRECTNESS OF ANY INTERPRETATION. WE SHALL NOT BE LIABLE OR RESPONSIBLE FOR ANY LOSS, COST, DAMAGES, OR EXPENSES WHATSOEVER INCURRED OR SUSTAINED BY THE CUSTOMER RESULTING FROM ANY INTERPRETATION MADE BY ANY OF OUR EMPLOYEES.

REMARKS

RUN 1 TRIP 1: *2 OPERATIONS IN WELLBORE*

OPERATION 2: RPM/GR/CCL RUN IN PNC-3D MODE

SJ: 6182' - 6204'

SJ: 7262' - 7284'

EQUIPMENT DATA

RUN	TRIP	TOOL	SERIES NO.	SERIAL NO.	POSITION
1	1	PCM	8250EA	11175584	FREE
1	1	TEL/CCL	8248ED	10193585	FREE
1	1	GR	8262 XA	10317216	FREE
1	1	RPM	8281EA	10179238	FREE
1	1	RPM	8283PA	10190200	FREE
1	1	RPM	8281FA	10318654	FREE
1	1	TEMP	8255 XA	11774568	FREE

RPM MAIN PASS G-SAND

ECLIPS 7.0i ECLIPS General Release Rel 7.0i Thu Jun 08 20:36:10 CDT 2017

Patches: 2

Plotted: Mon Feb 5 20:11:03 2018

PARAMETER AND FILTER SUMMARY REPORT

FILE: /dat1a/LARAMIE_BRUTON_30-14W/p353h03.prm
 LOGGING MODE: DEPTH DIRECTION: UP
 TOP DEPTH: 2513.800 ft BOTTOM DEPTH: 3160.920 ft

SYMMETRIC FILTER

MEASUREMENT TYPE	PARAMETER	VALUE	UNITS	INTERVAL (ft)
GR	FILTER ()	medium (1)		TOP BOTTOM

RPM PROCESSING

MEASUREMENT TYPE	PARAMETER	VALUE	UNITS	INTERVAL (ft)
PNC Parameters	BOREHOLE CONTENTS	FLUID		TOP BOTTOM
	OPEN/CASED HOLE	CASED HOLE		" "
	BOREHOLE SIZE	7.88	in	" "
	LARGEST CASING OD	4.50	in	" "
	MATRIX	SANDSTONE		" "

CURVE DESCRIPTION REPORT

CURVE NAME	CREATION DATE	CURVE DESCRIPTION
F1:CCL	N/A	CASING COLLAR LOCATOR
F1:GR	N/A	GAMMA RAY
F1:ISS	N/A	INELASTIC SHORT SPACE COUNT RATE
F1:LS	N/A	LONG SPACE COUNT RATE
F1:RATO	N/A	SHORT/LONG SPACE COUNT RATE RATIO
F1:RICS	N/A	SHORT SPACE INELASTIC TO CAPTURE COUNT RATE RATIO (ISS/CSS)
F1:SGFC	N/A	BOREHOLE AND DIFFUSION CORRECTED SIGMA
F1:SS	N/A	SHORT SPACE COUNT RATE

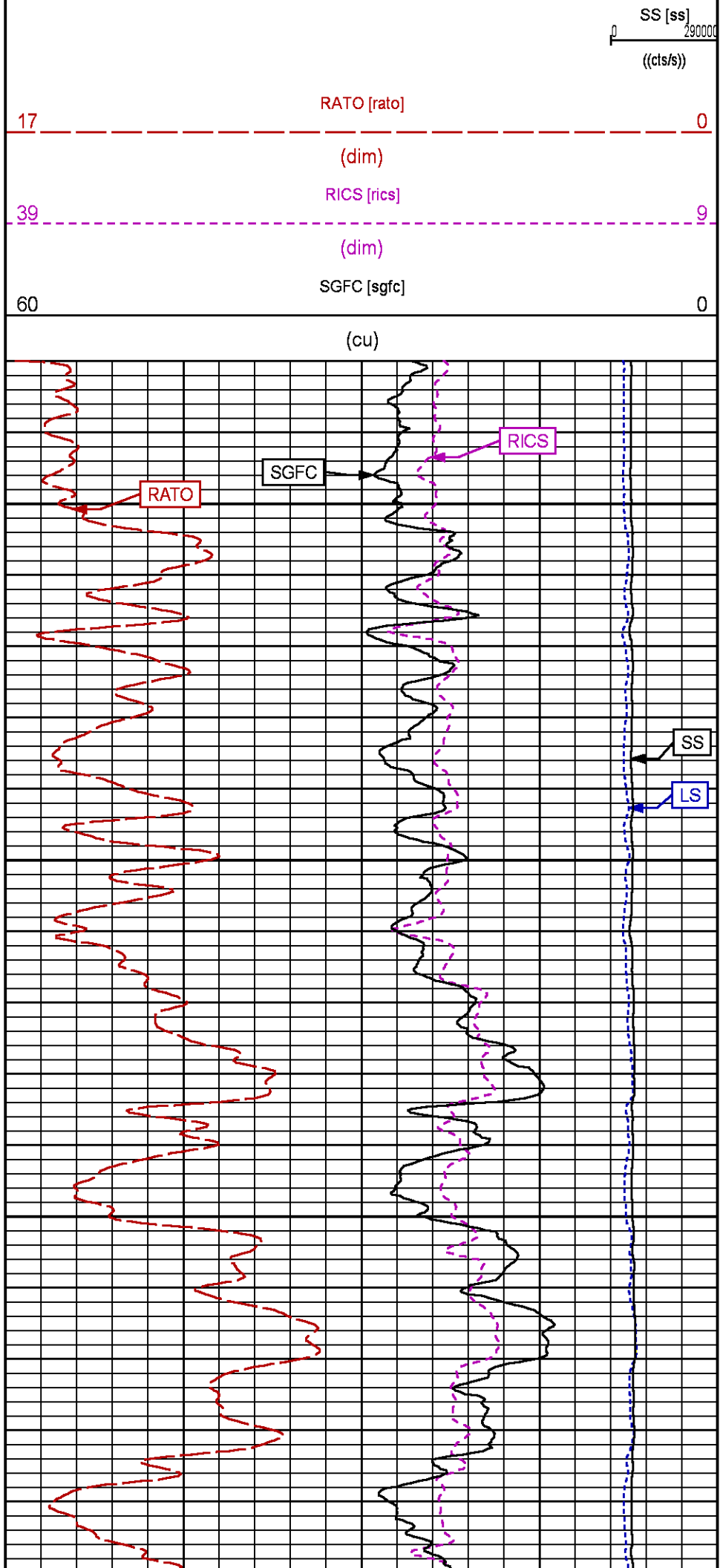
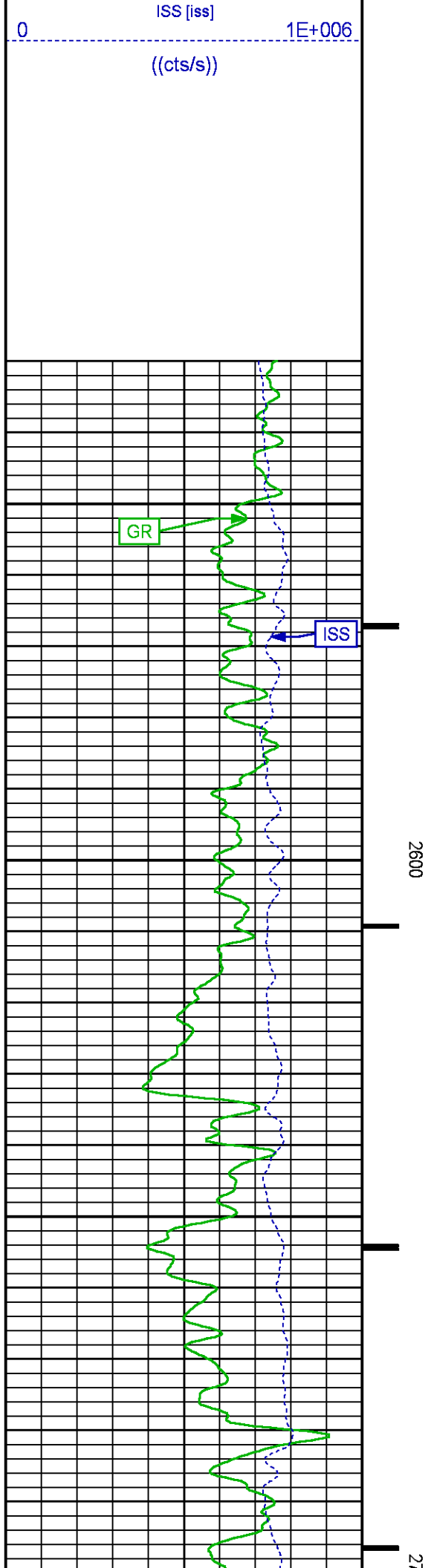
CURVE MEASURE POINT OFFSET

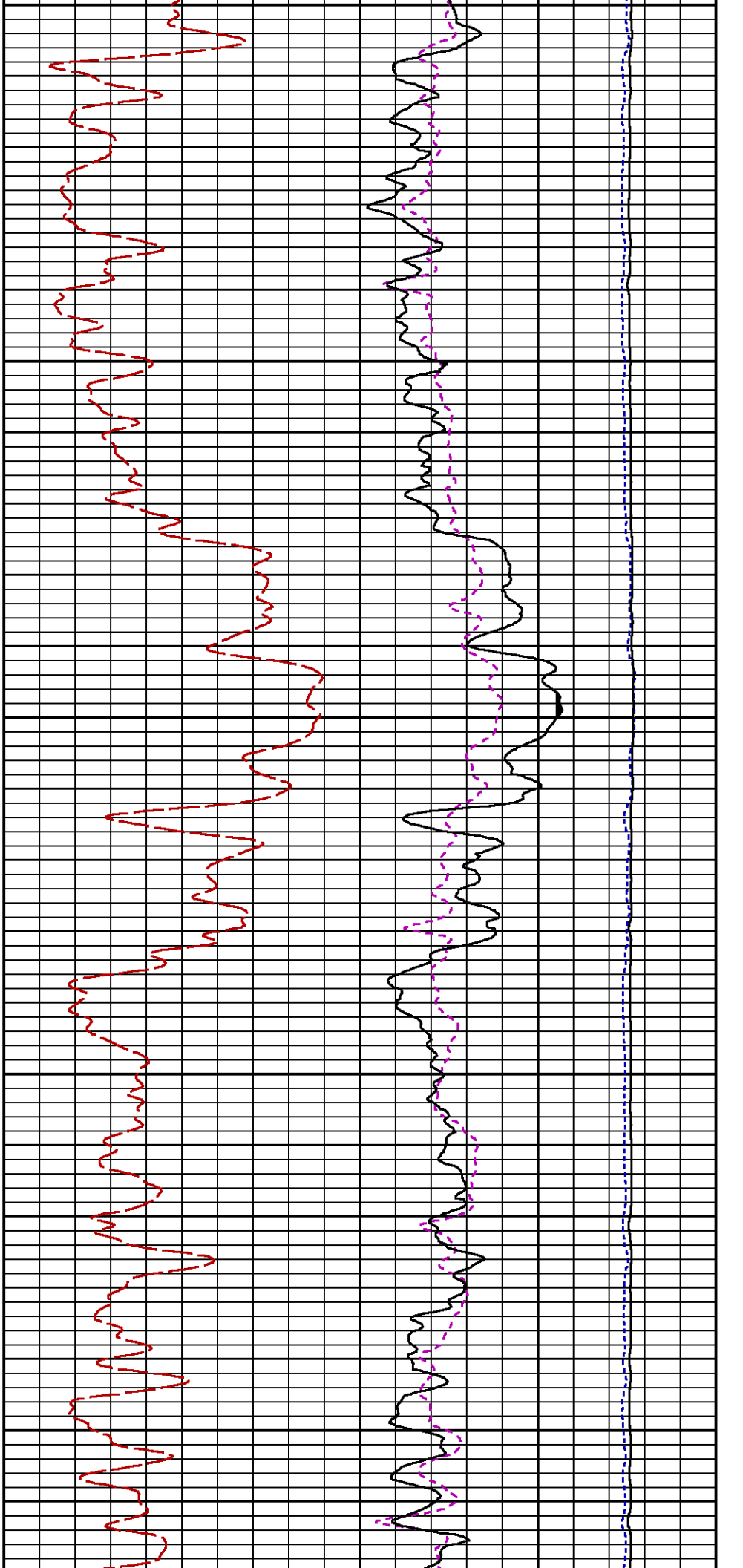
CURVE	OFFSET (ft)	CURVE	OFFSET (ft)	CURVE	OFFSET (ft)	CURVE	OFFSET (ft)
CCL	-26.00	ISS	-12.75	RATO	-12.75	SGFC	-12.75
GR	-23.00	LS	-12.75	RICS	-12.75	SS	-12.75

Presentation : SysA:/dat1a/LARAMIE_BRUTON_30-14W/30-14W_RPM_GS.fvpdf [5"/100' Scale]
 Plot Interval : 2530 - 3140 Feet

Data File 1 : F1 : SysA:C:\Users
 Created On : 2/5/2018
 Company : LARAMIE ENERGY LLC
 Well : BRUTON 30-14W
 Field : VEGA
 File Interval : 2502 - 3173.25 Feet
 OCT : p353h



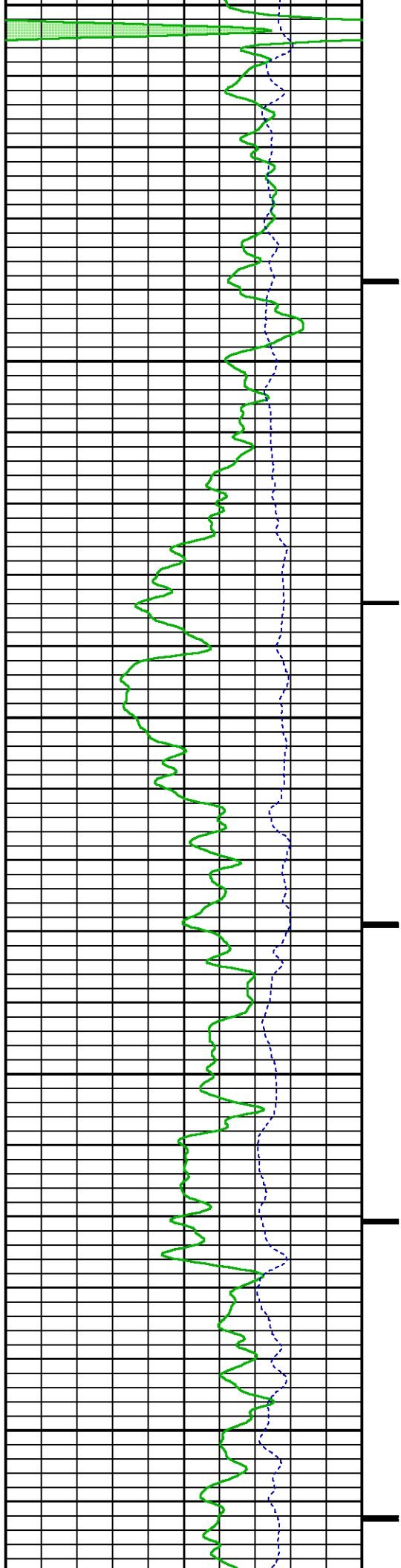


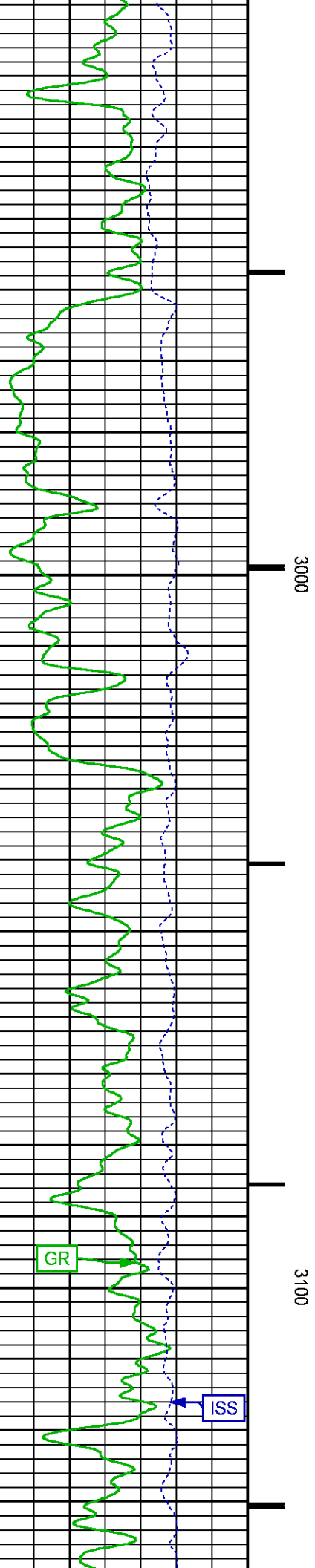
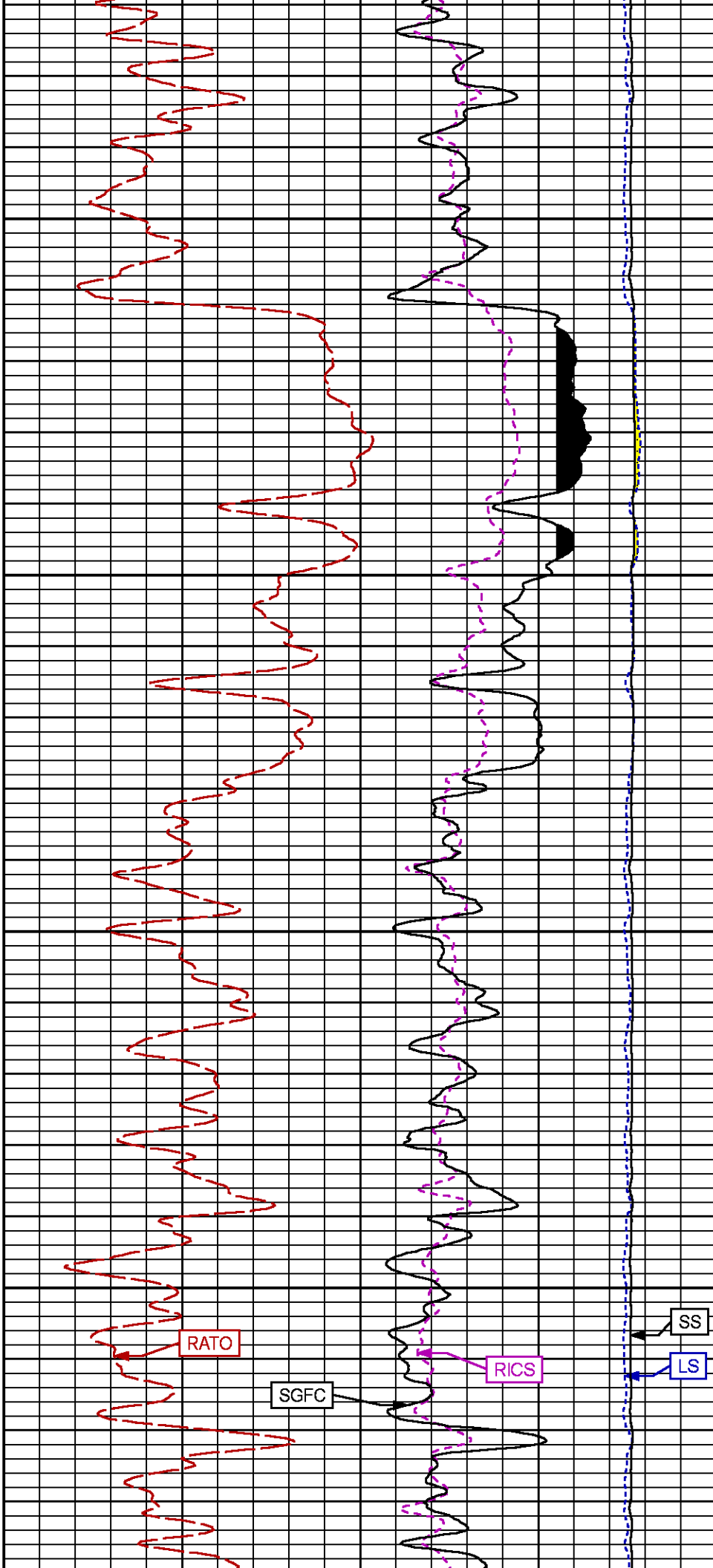


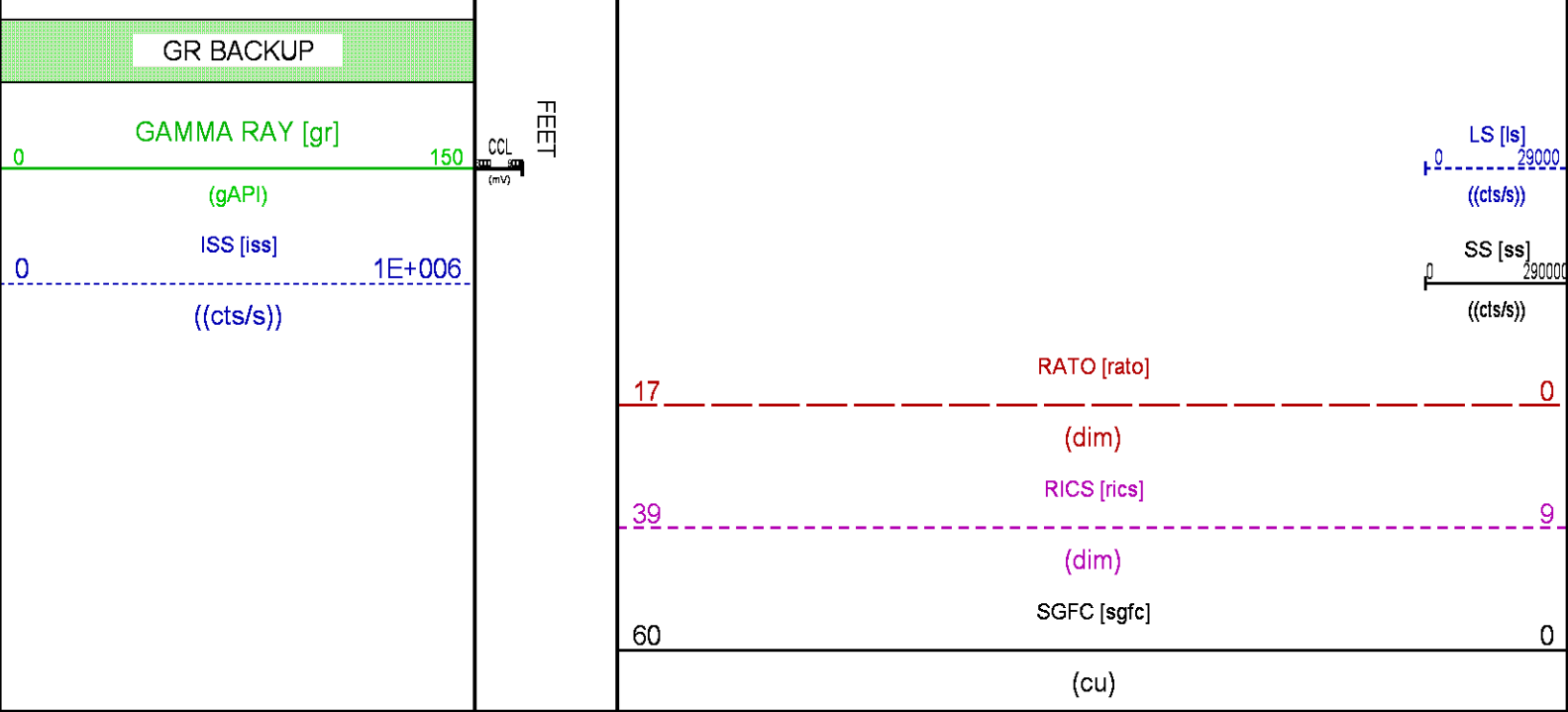
00

2800

2900







RPM MAIN PASS WILLIAMS FORK

ECLIPS 7.0i ECLIPS General Release Rel 7.0i Thu Jun 08 20:36:10 CDT 2017
Patches: 2

Plotted: Mon Feb 5 19:30:45 2018

PARAMETER AND FILTER SUMMARY REPORT				
FILE: /dat1a/LARAMIE_BRUTON_30-14W/p353h02.prm				
LOGGING MODE: DEPTH DIRECTION: UP				
TOP DEPTH: 4715.177 ft BOTTOM DEPTH: 8043.251 ft				
SYMMETRIC FILTER				
MEASUREMENT TYPE	PARAMETER	VALUE	UNITS	INTERVAL (ft)
GR	FILTER ()	medium (1)		TOP BOTTOM
RPM PROCESSING				
MEASUREMENT TYPE	PARAMETER	VALUE	UNITS	INTERVAL (ft)
PNC Parameters	BOREHOLE CONTENTS	FLUID		TOP BOTTOM
	OPEN/CASED HOLE	CASED HOLE		" "
	BOREHOLE SIZE	7.88	in	" "
	LARGEST CASING OD	4.50	in	" "
	MATRIX	SANDSTONE		" "

CURVE DESCRIPTION REPORT		
CURVE NAME	CREATION DATE	CURVE DESCRIPTION
F1:CCL	N/A	CASING COLLAR LOCATOR
F1:GR	N/A	GAMMA RAY
F1:ISS	N/A	INELASTIC SHORT SPACE COUNT RATE
F1:LS	N/A	LONG SPACE COUNT RATE
F1:RATO	N/A	SHORT/LONG SPACE COUNT RATE RATIO
F1:RICS	N/A	SHORT SPACE INELASTIC TO CAPTURE COUNT RATE RATIO (ISS/CSS)
F1:SGFC	N/A	BOREHOLE AND DIFFUSION CORRECTED SIGMA

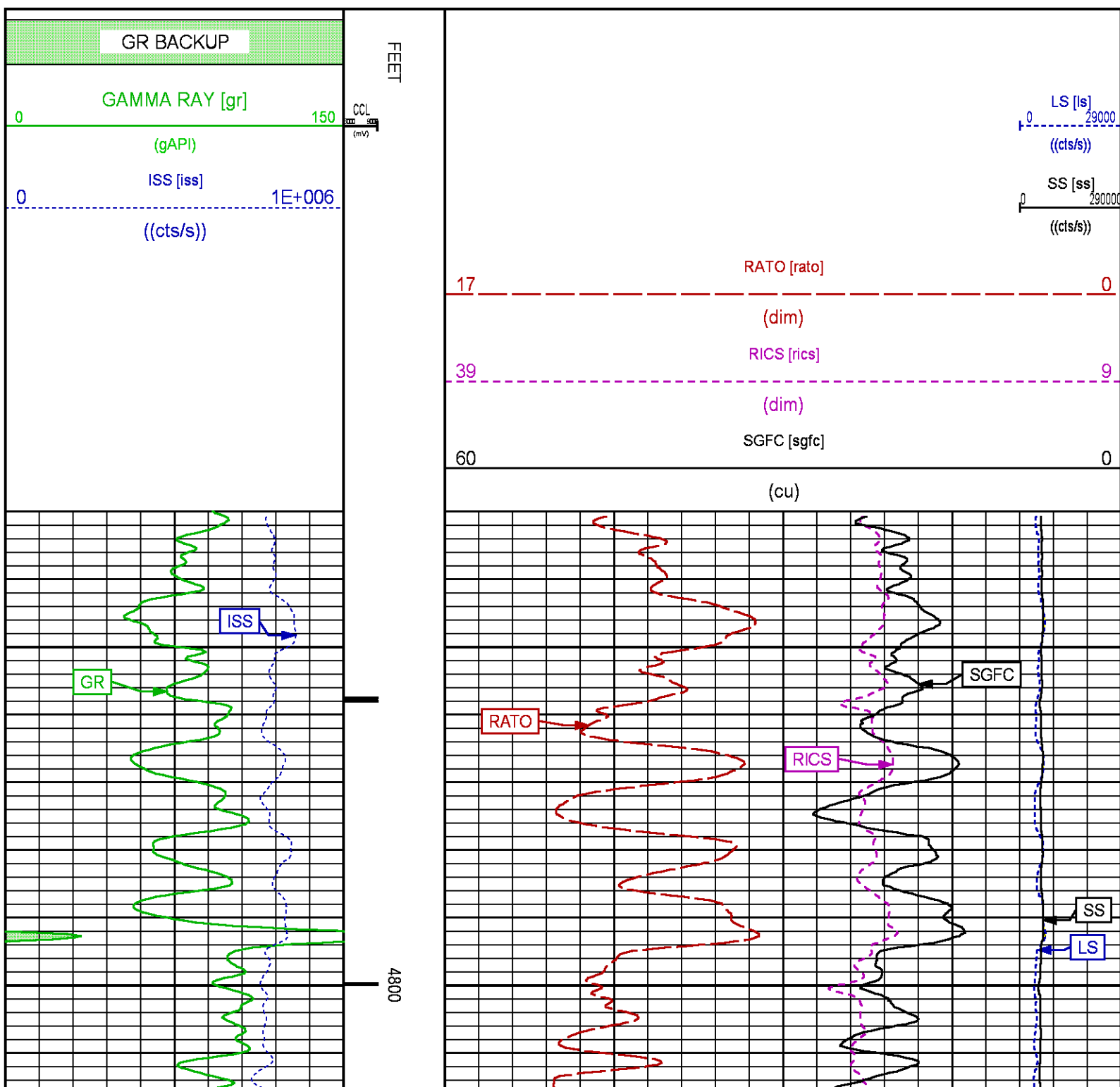
F1:SGFC	N/A
F1:SS	N/A

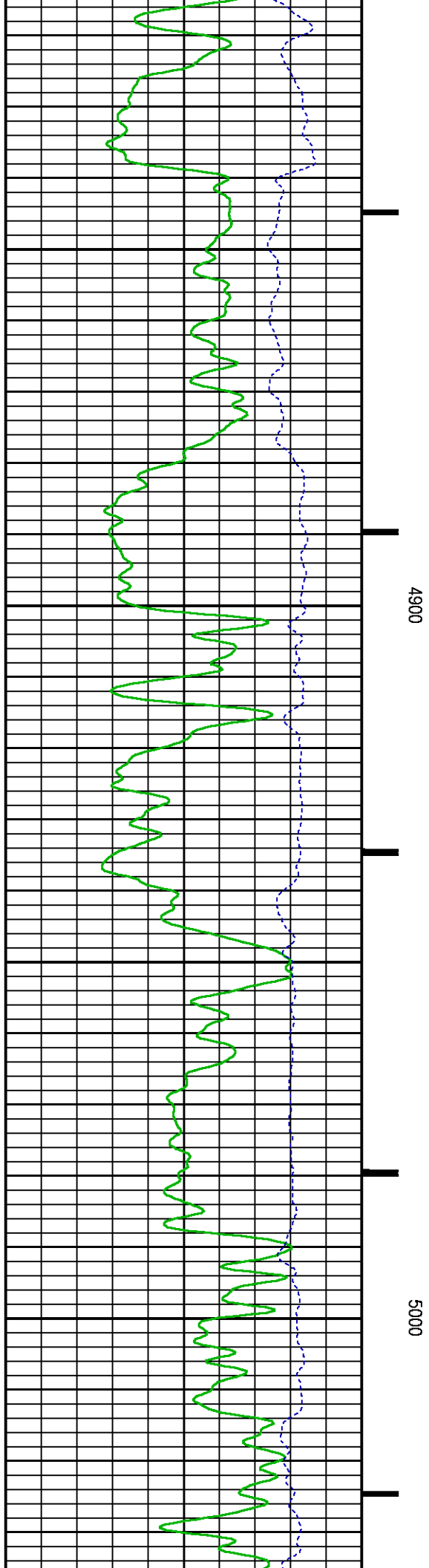
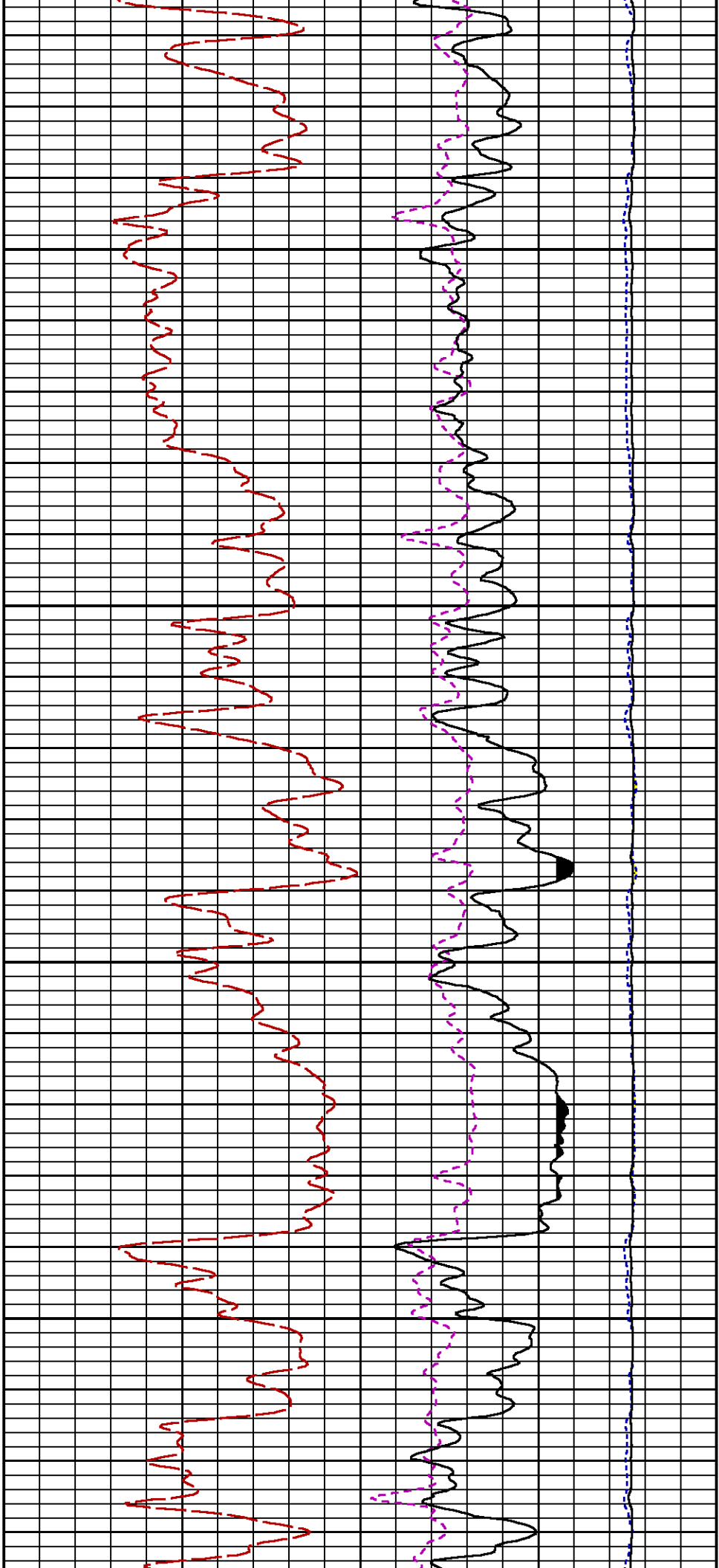
CURVE MEASURE POINT OFFSET

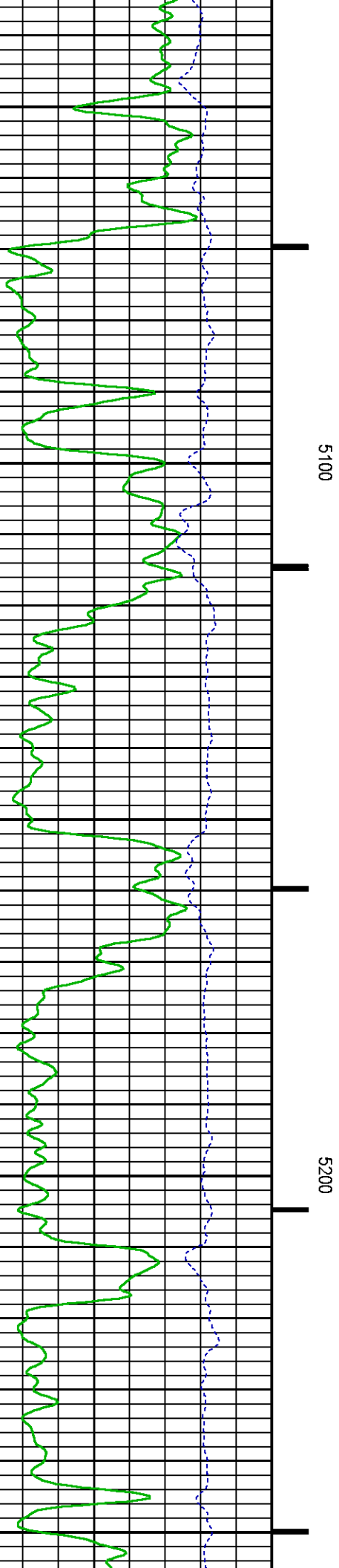
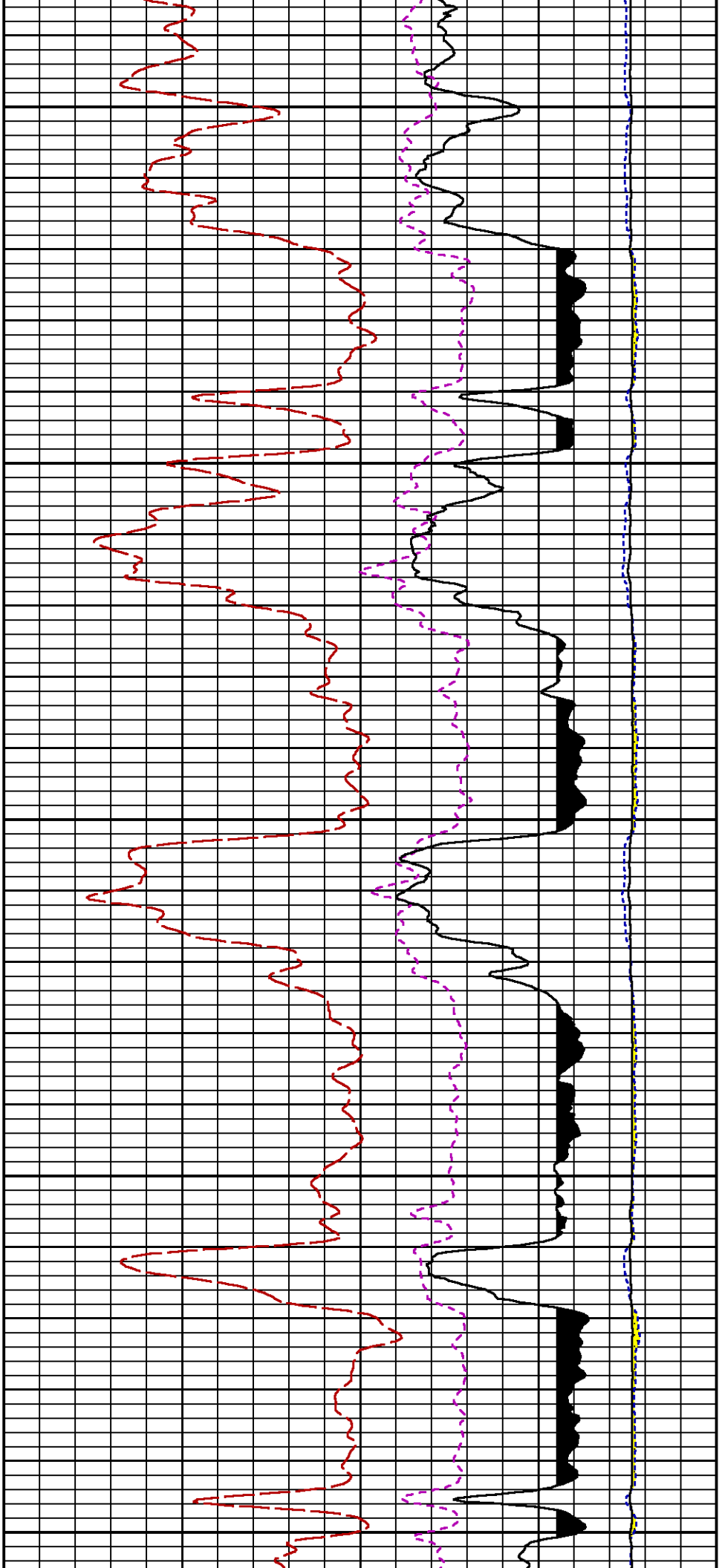
CURVE	OFFSET (ft)	CURVE	OFFSET (ft)	CURVE	OFFSET (ft)	CURVE	OFFSET (ft)
CCL	-26.00	ISS	-12.75	RATO	-12.75	SGFC	-12.75
GR	-23.00	LS	-12.75	RICS	-12.75	SS	-12.75

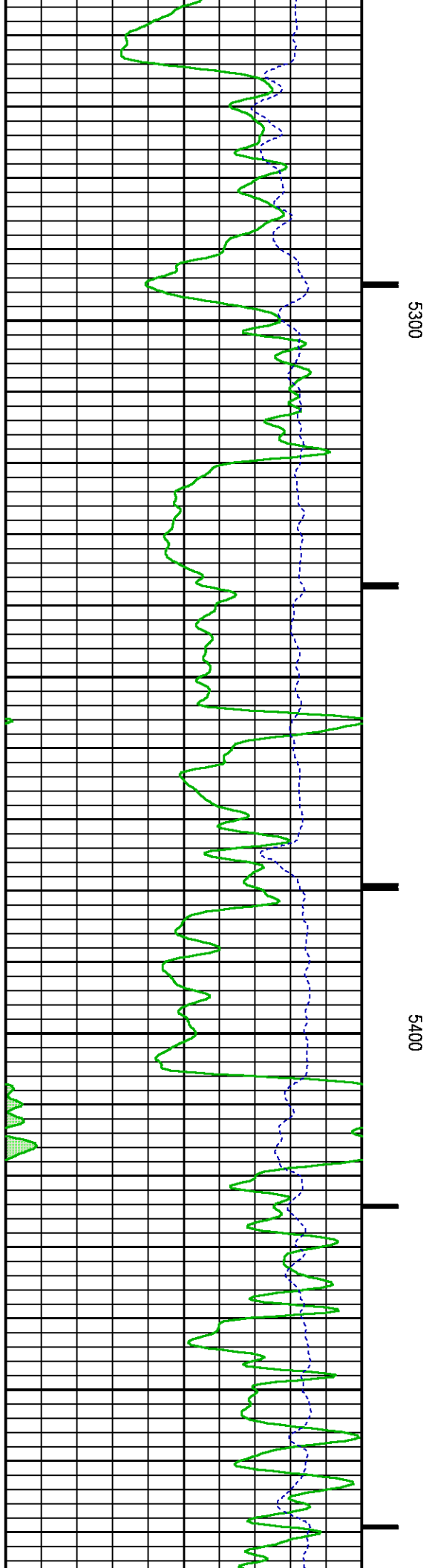
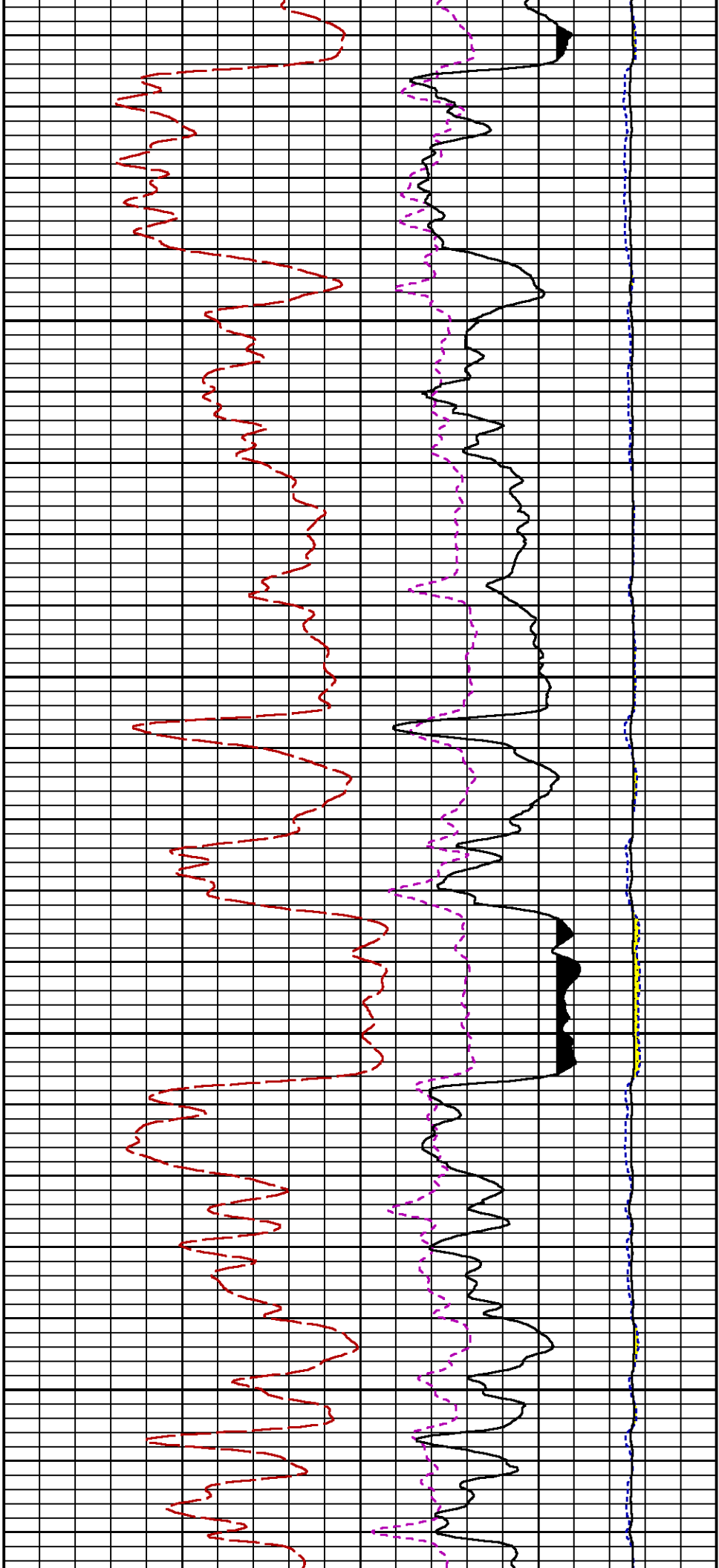
Presentation : SysA:/dat1a/LARAMIE_BRUTON_30-14W/30-14W_RPM_WF.fvpdf [5"/100' Scale]
Plot Interval : 4730 - 8050 Feet

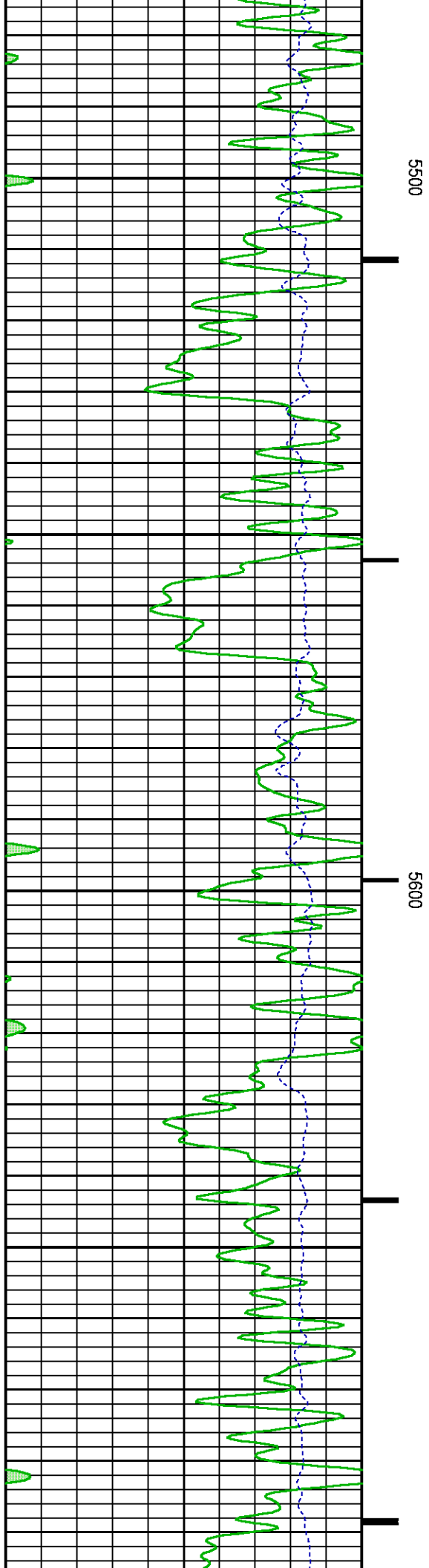
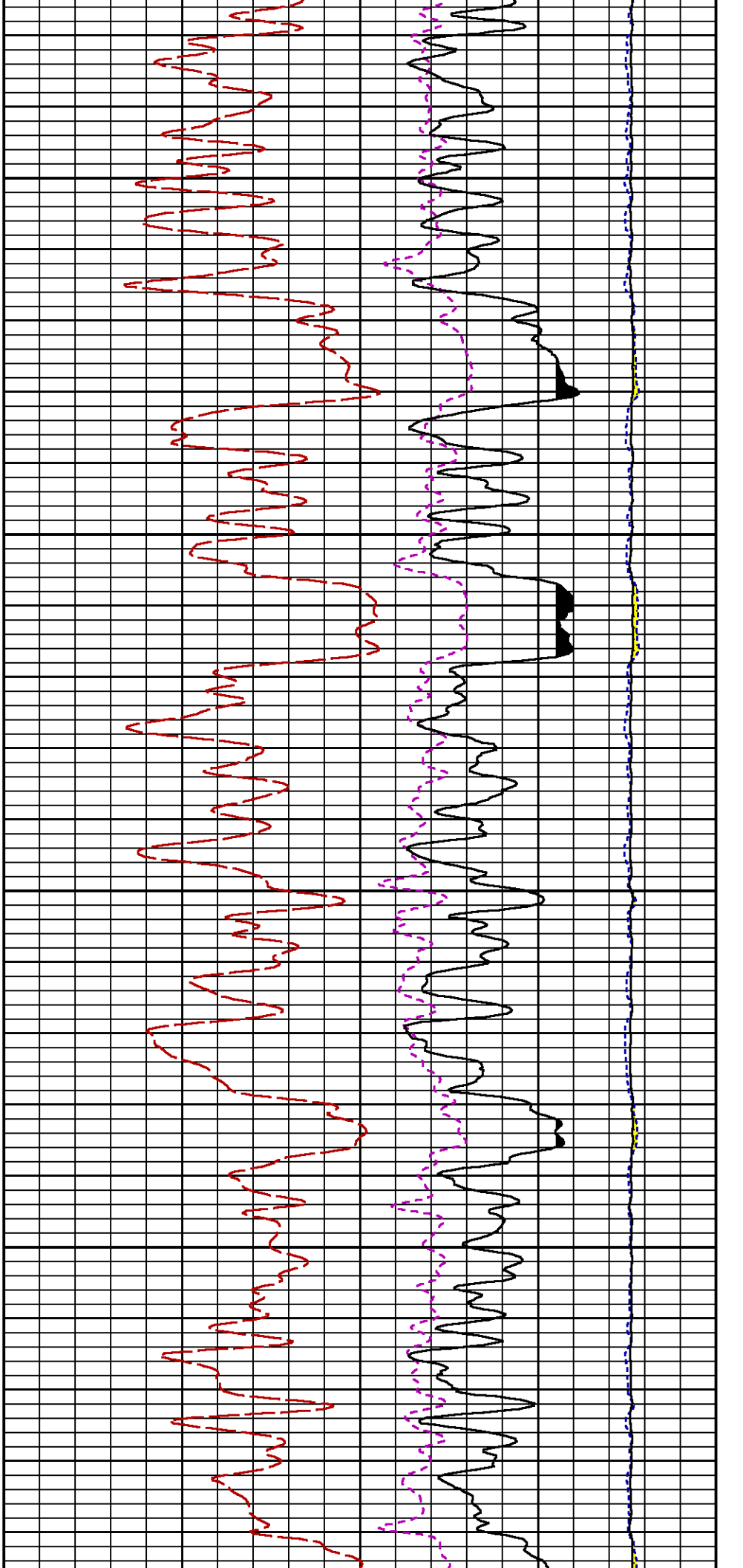
Data File 1 : F1 : SysA:C:\Users
Created On : N/A
Company : LARAMIE ENERGY LLC
Well : BRUTON 30-14W
Field : VEGA
File Interval : 4704 - 8055.5 Feet
OCT : p353h

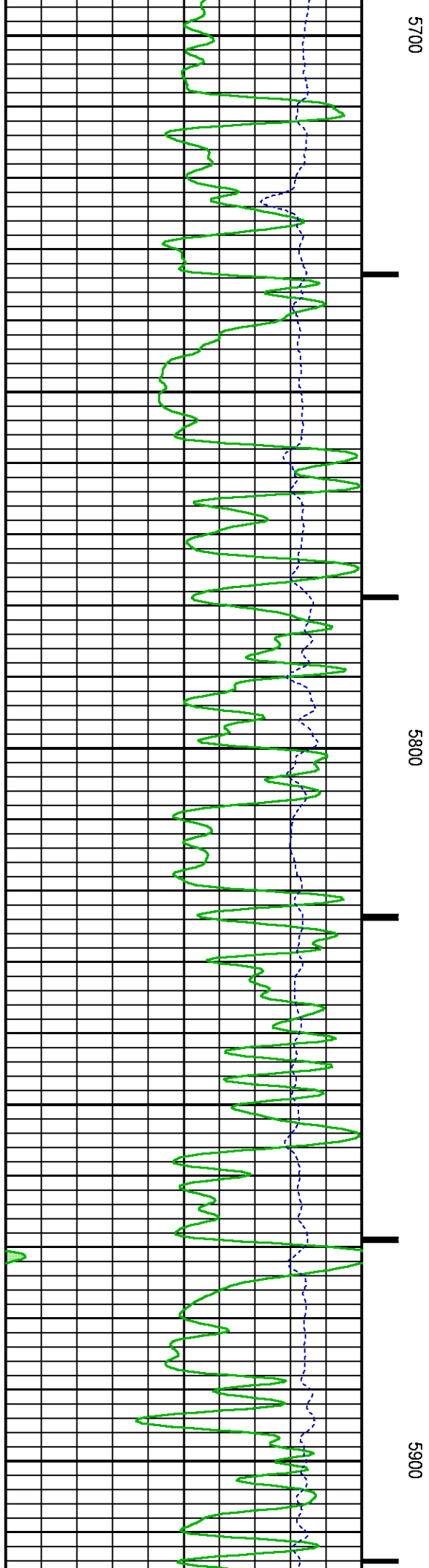
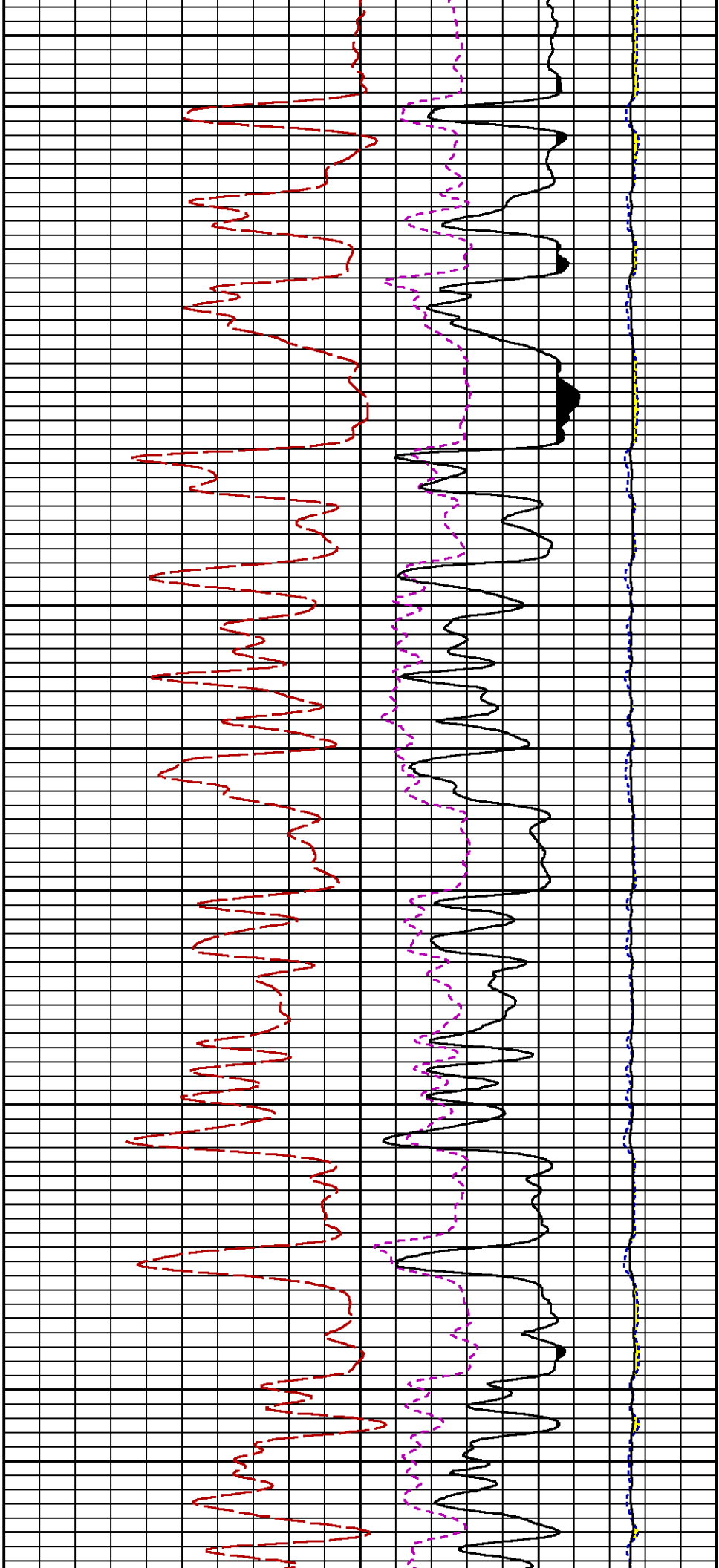


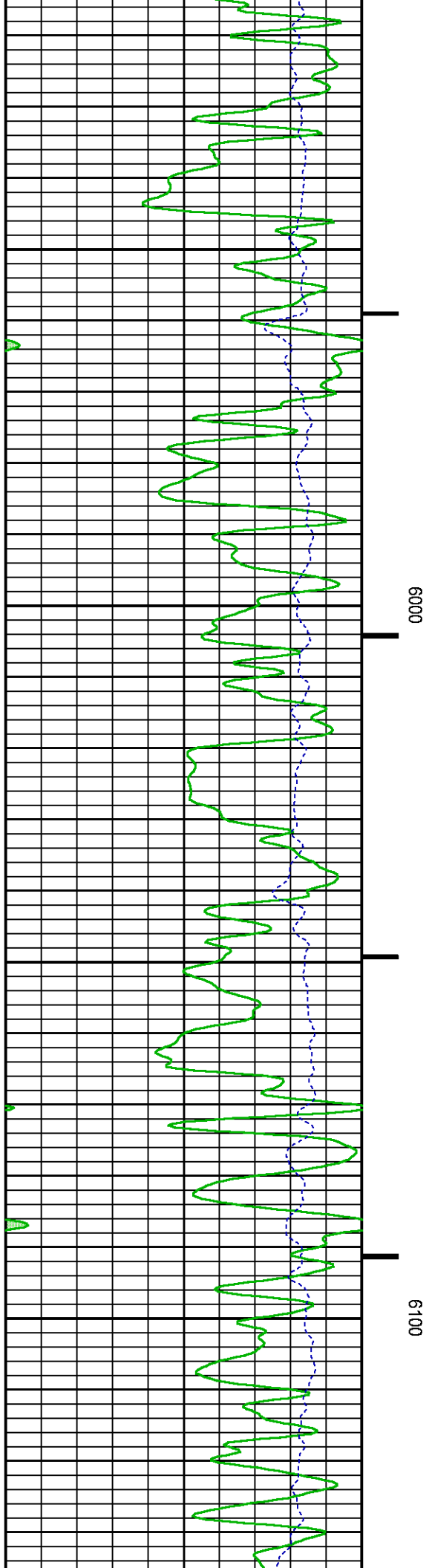
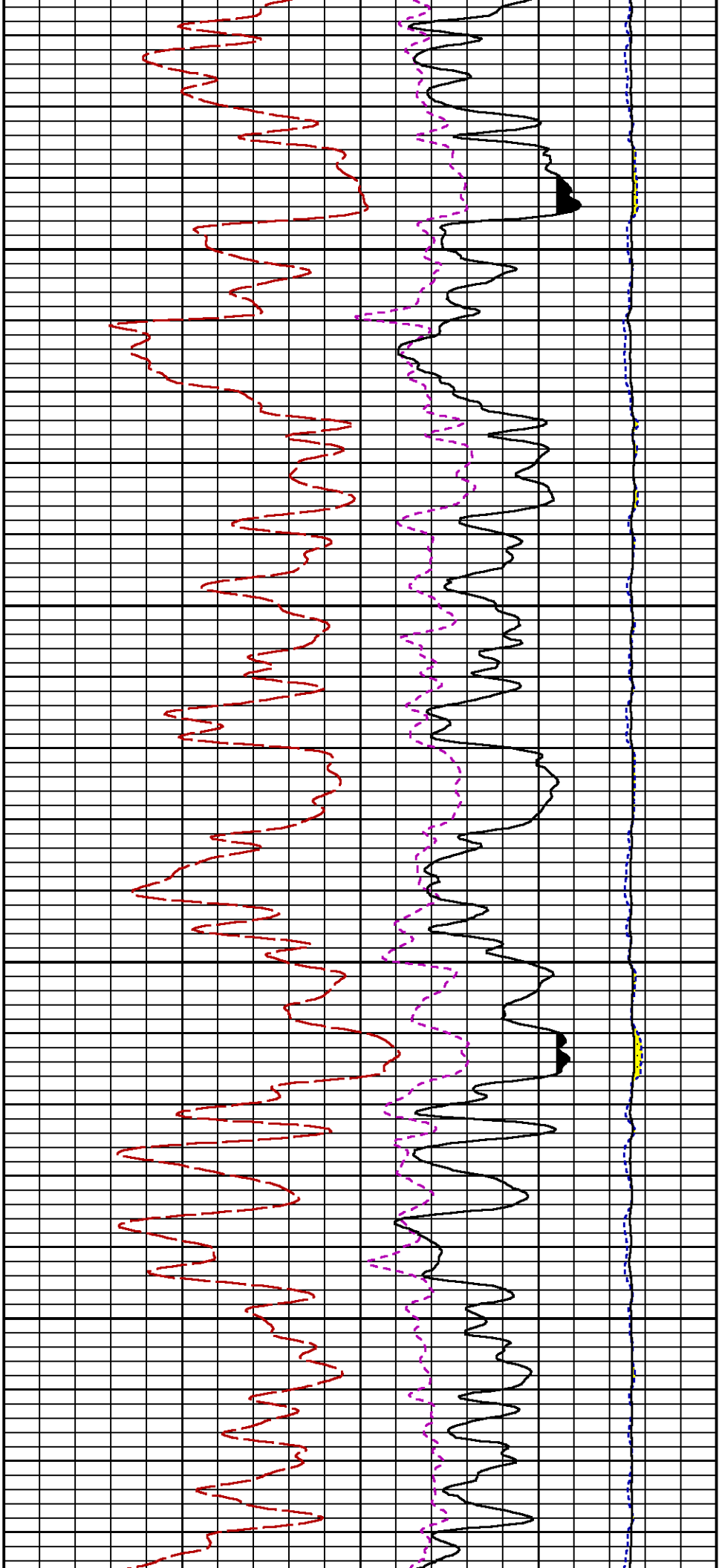


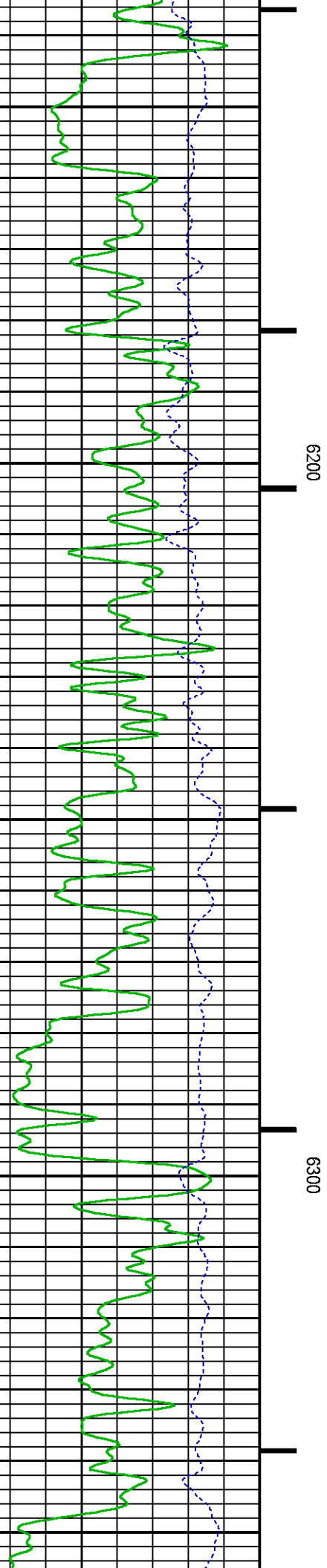
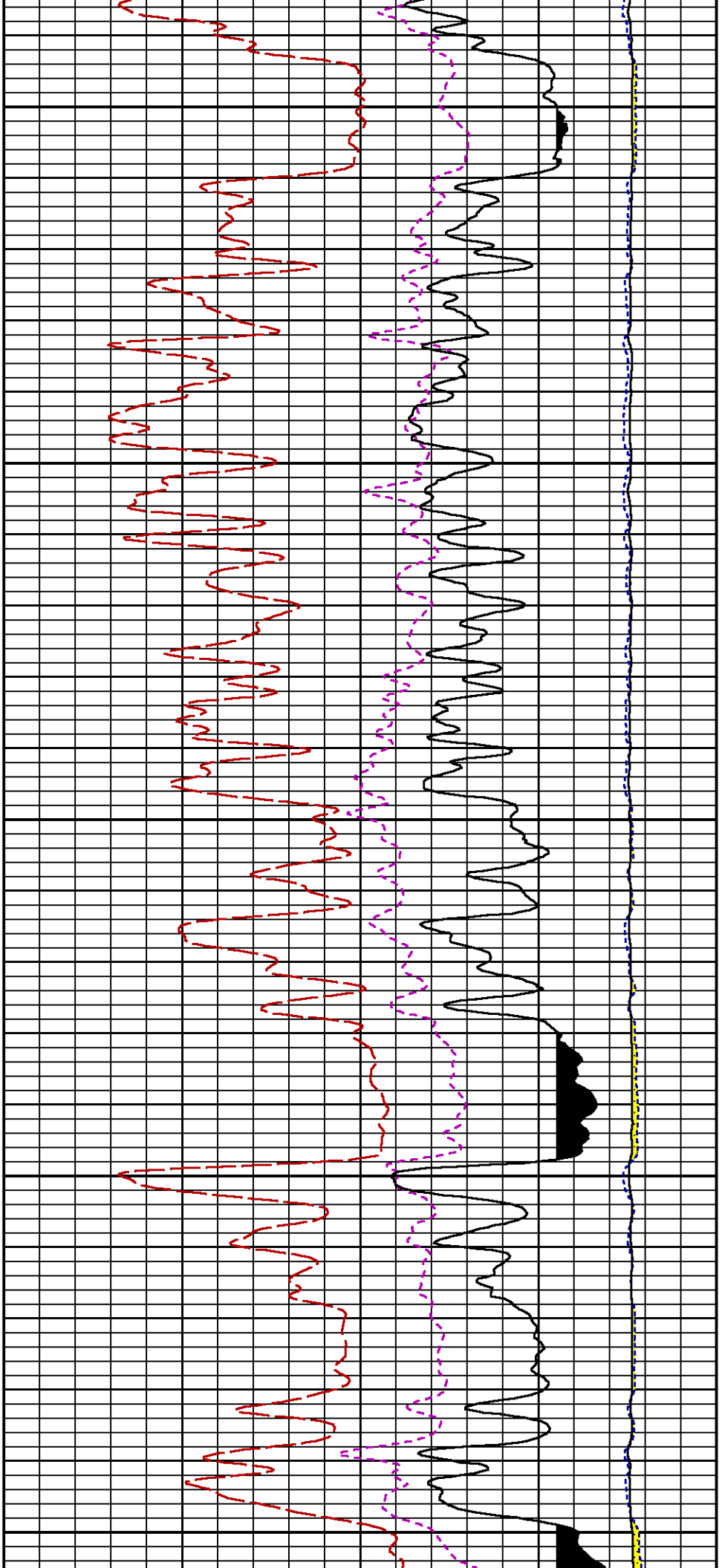


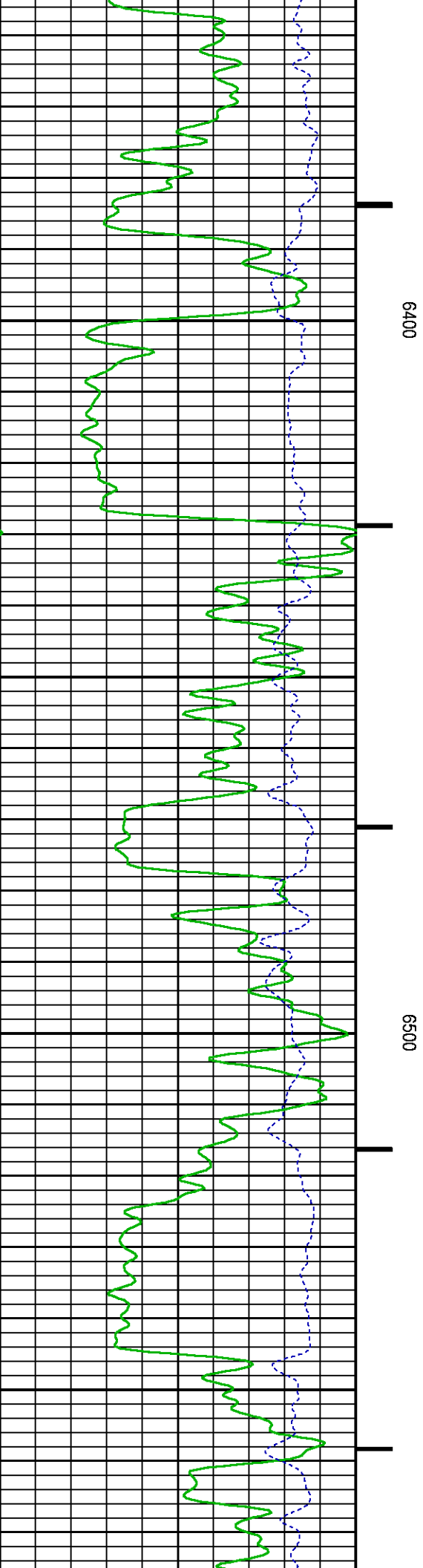
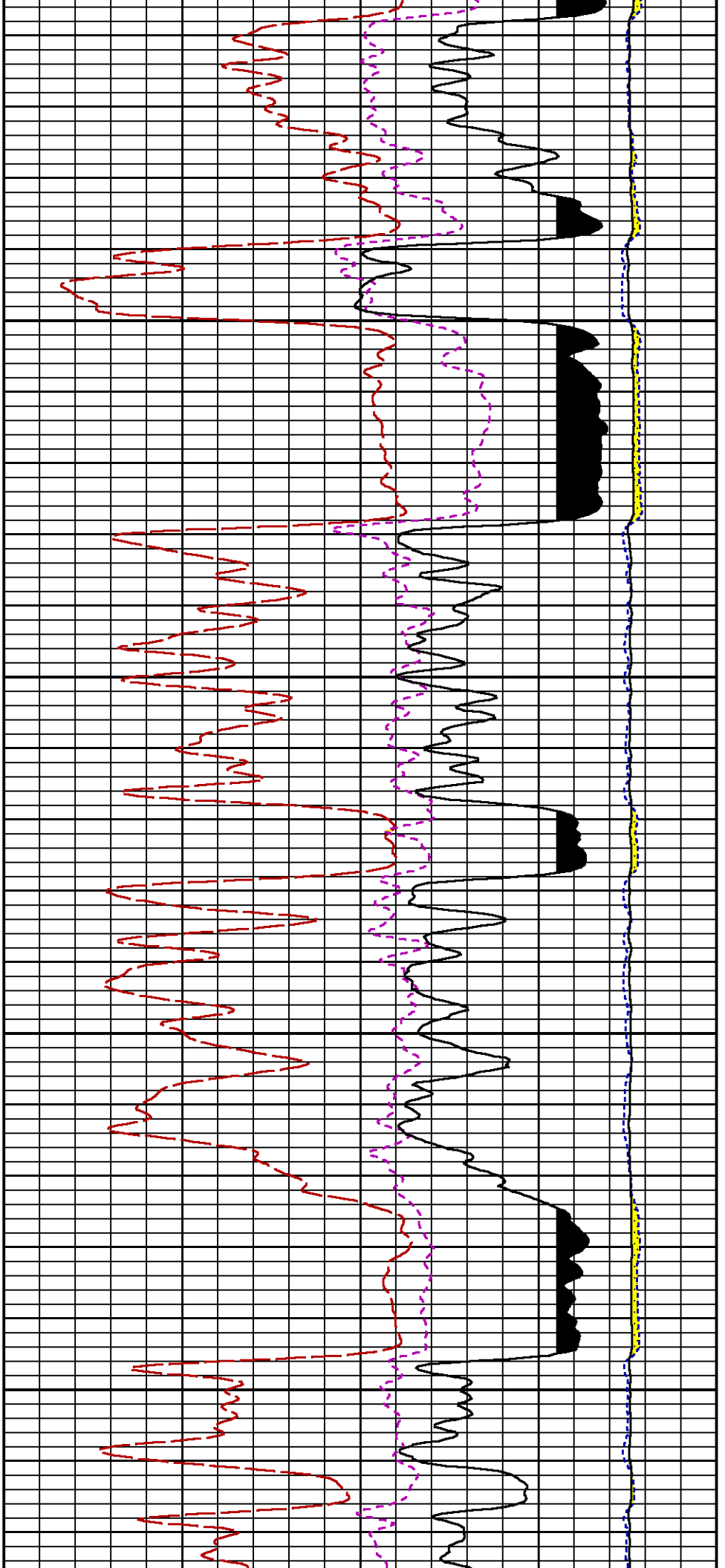


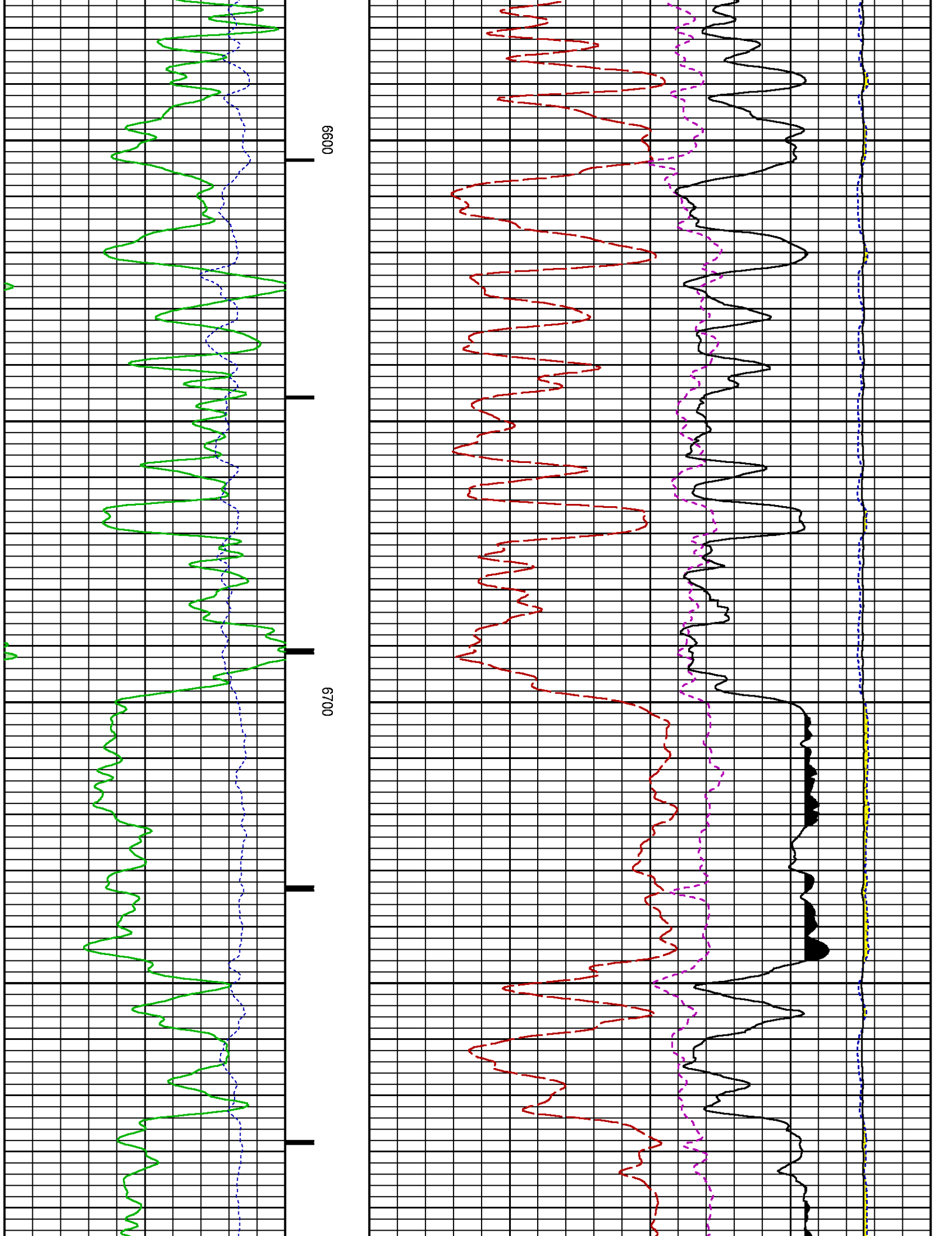


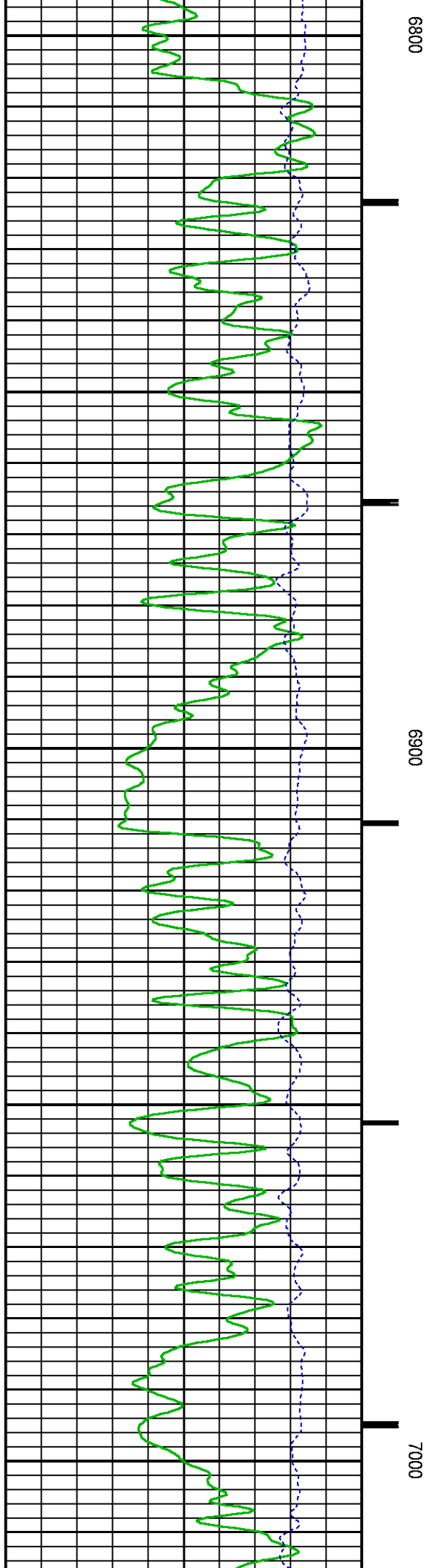
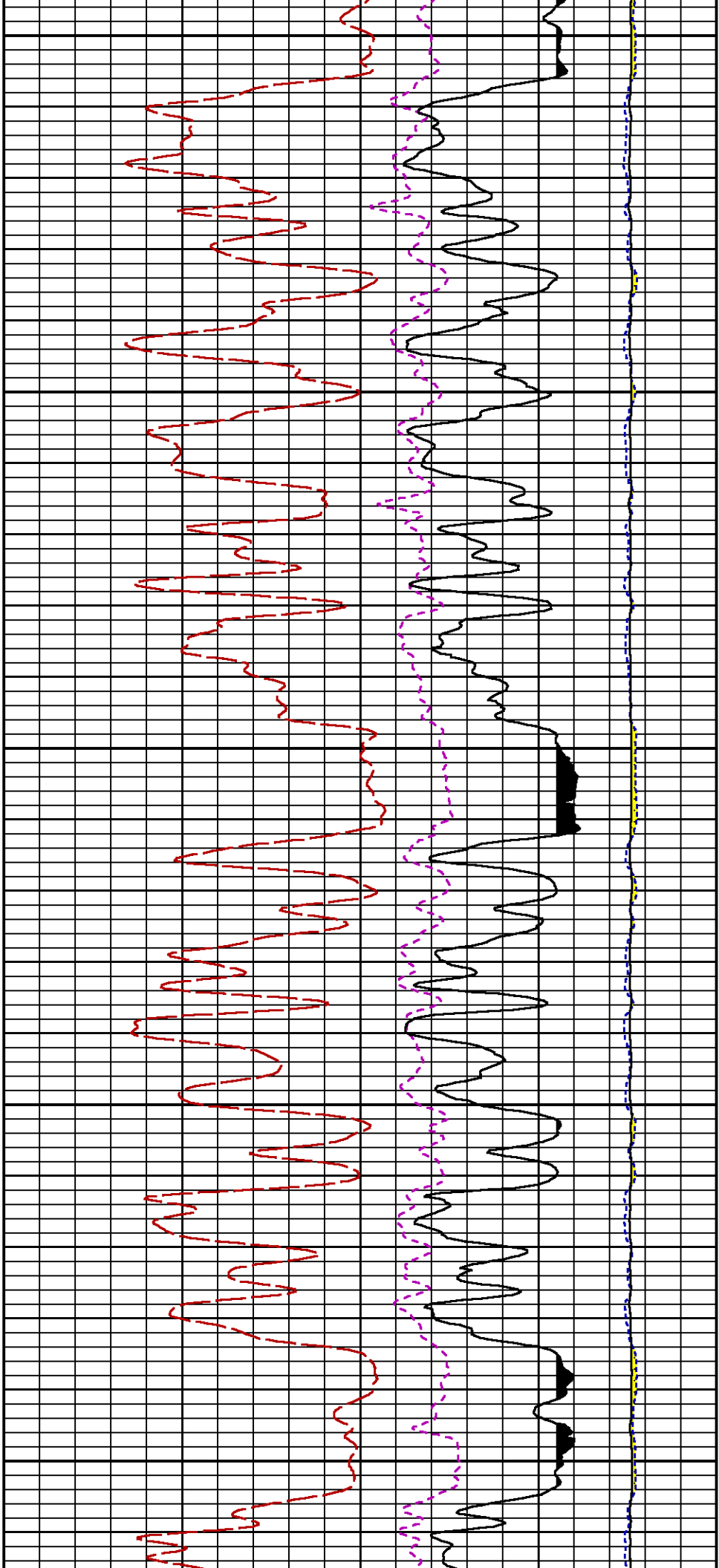


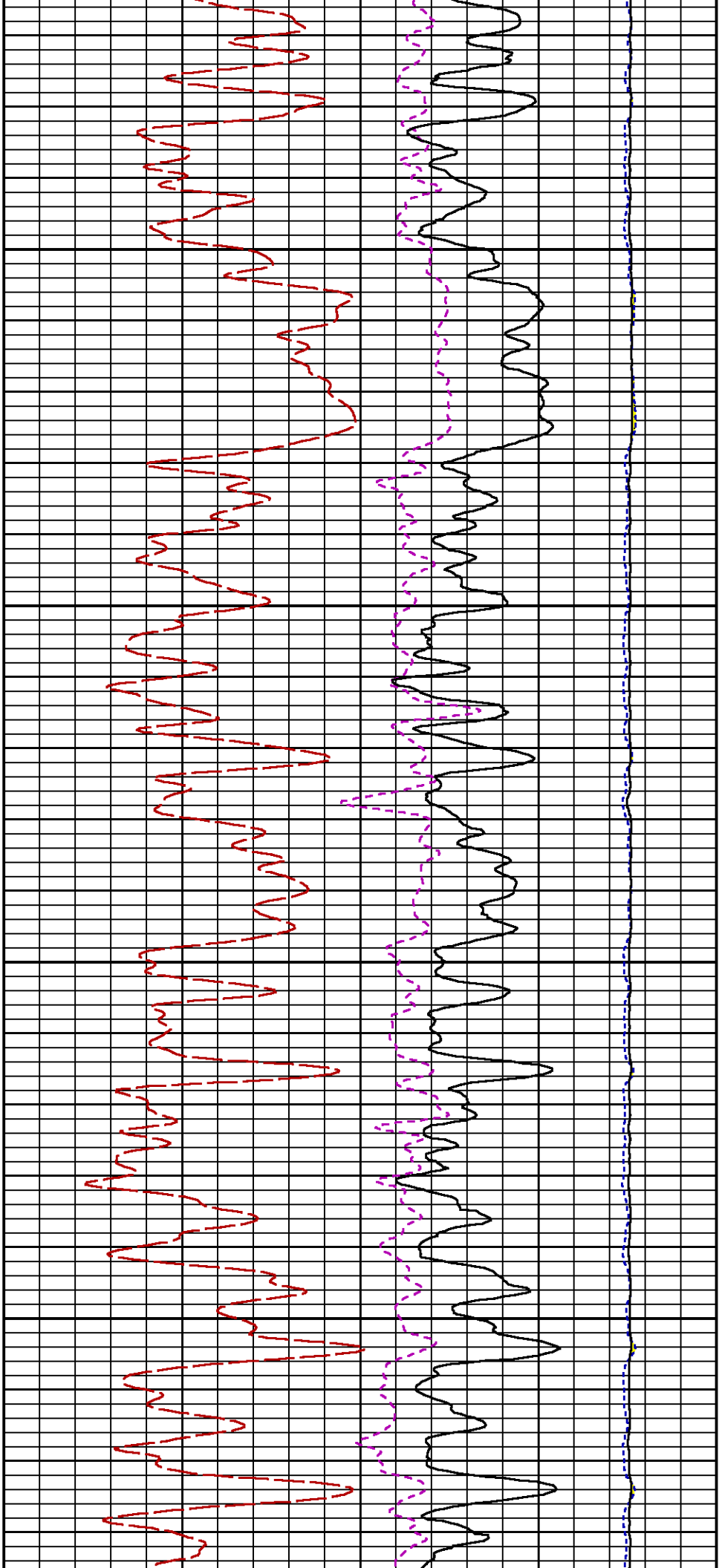






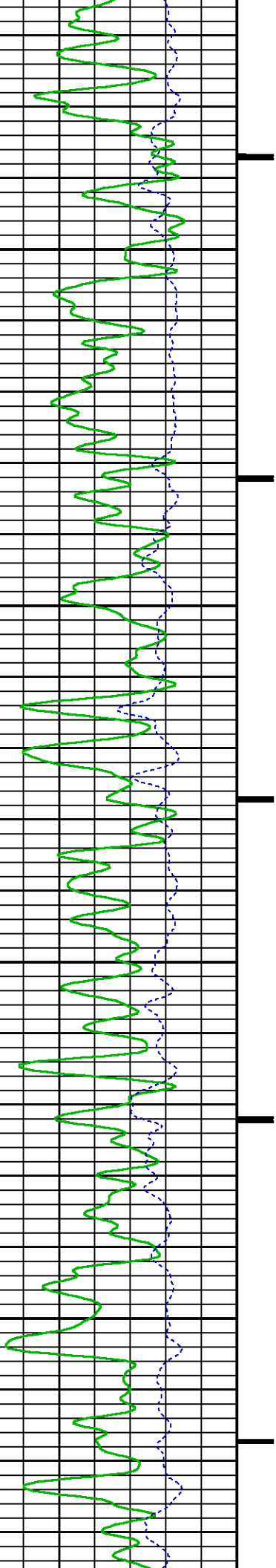


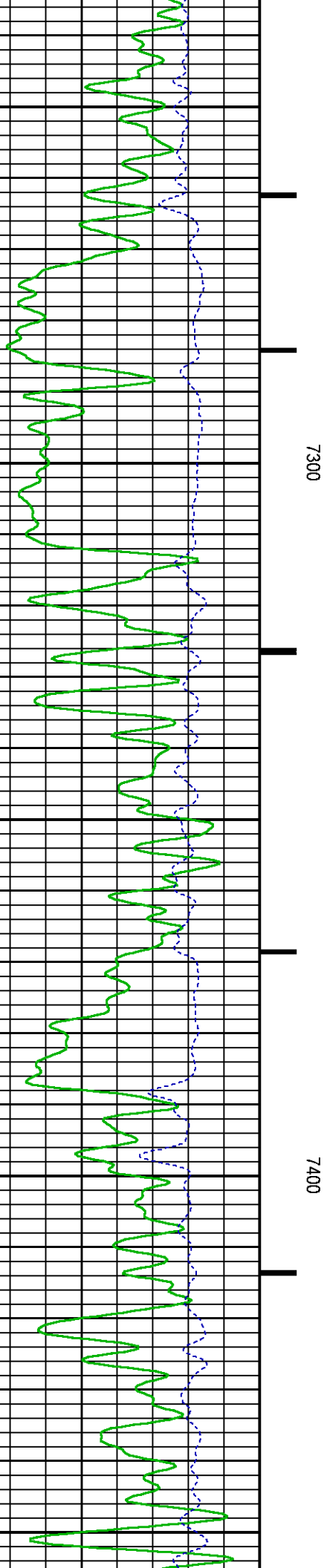
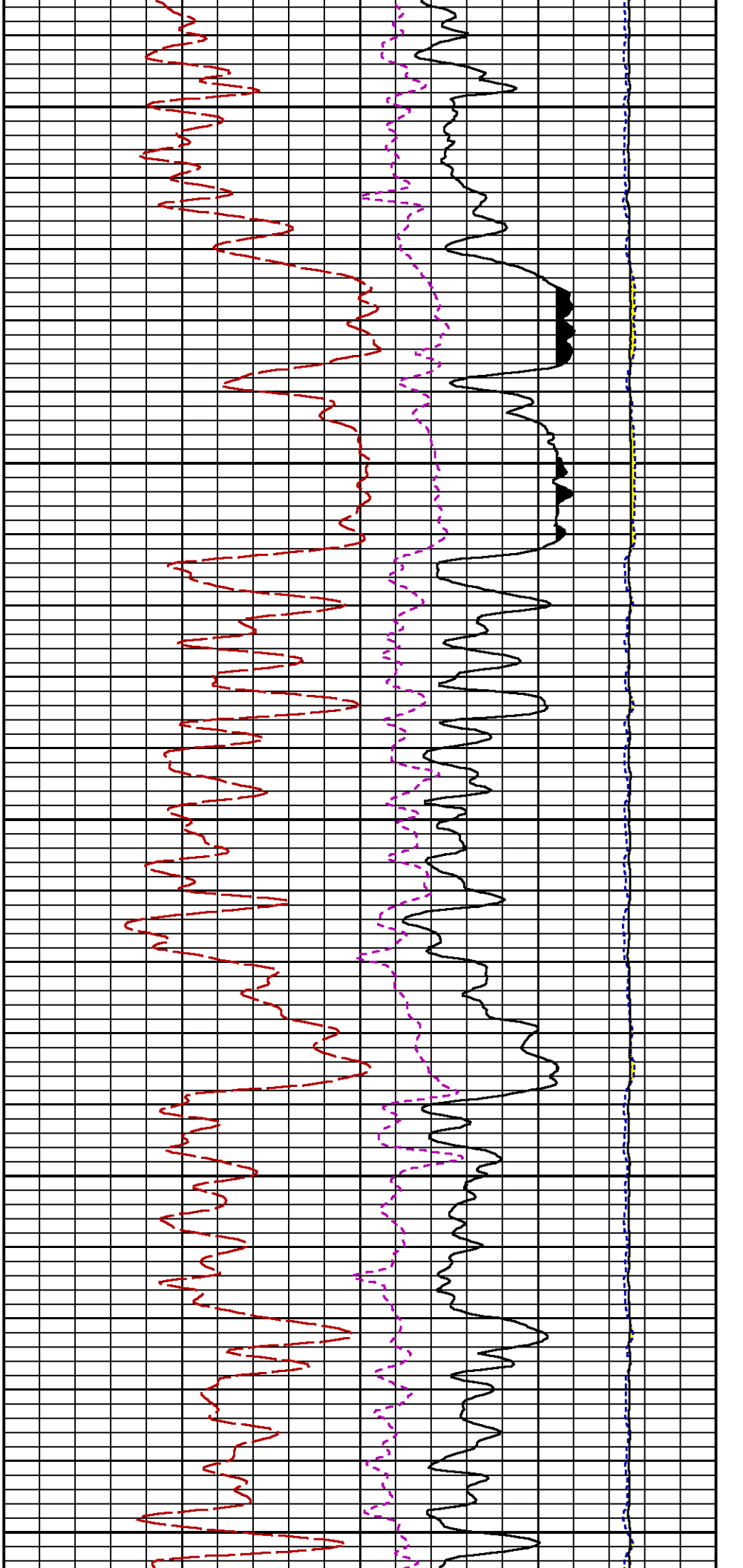


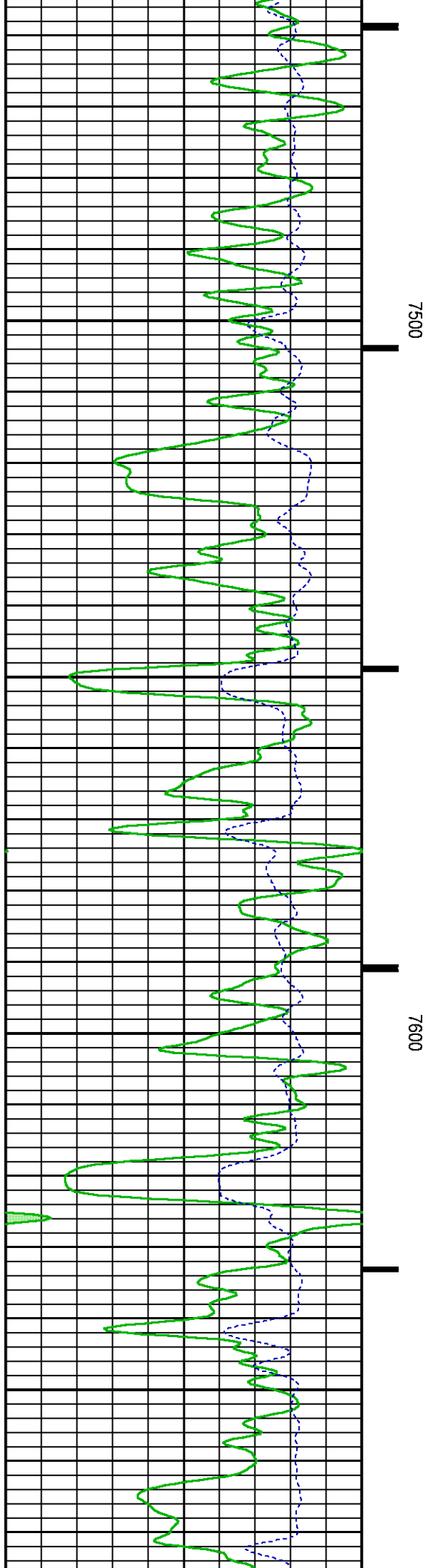
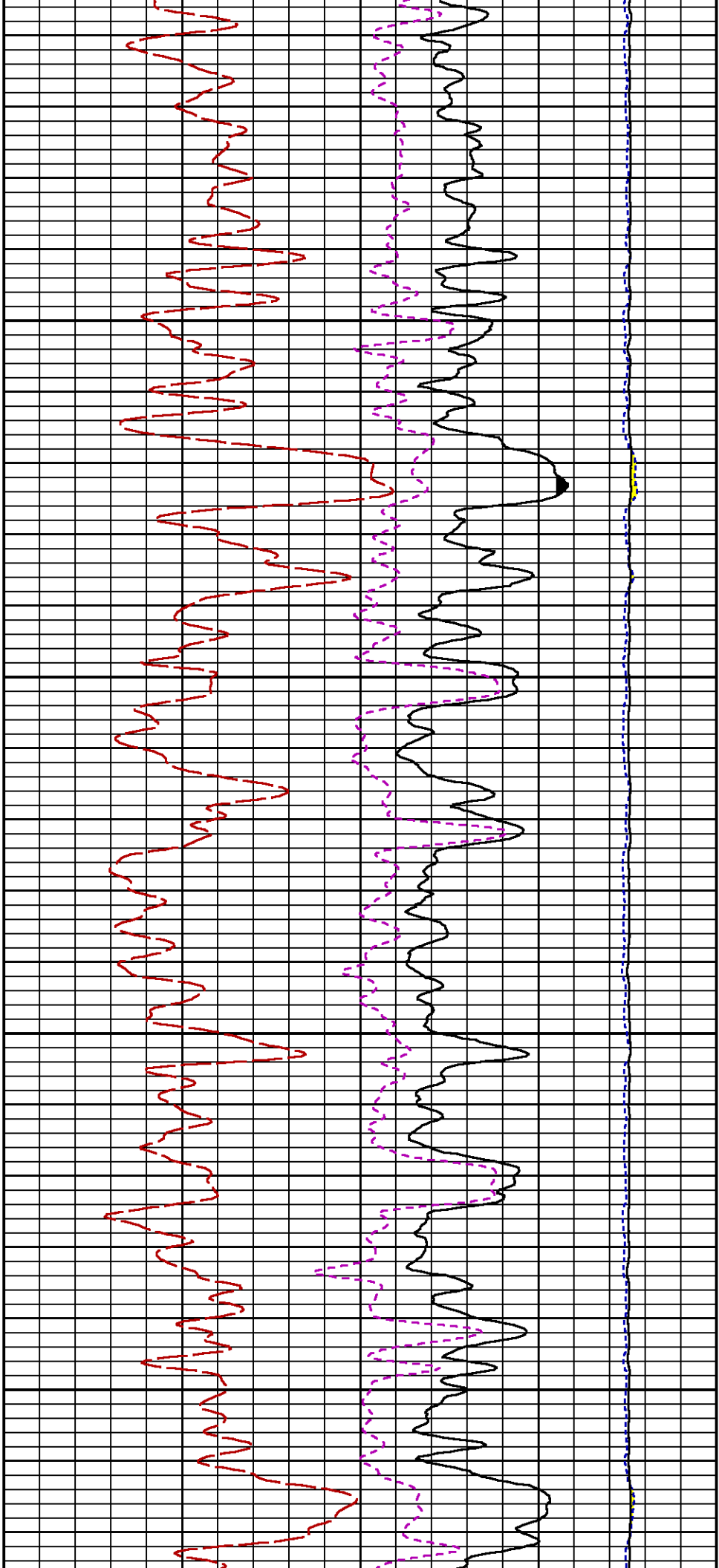


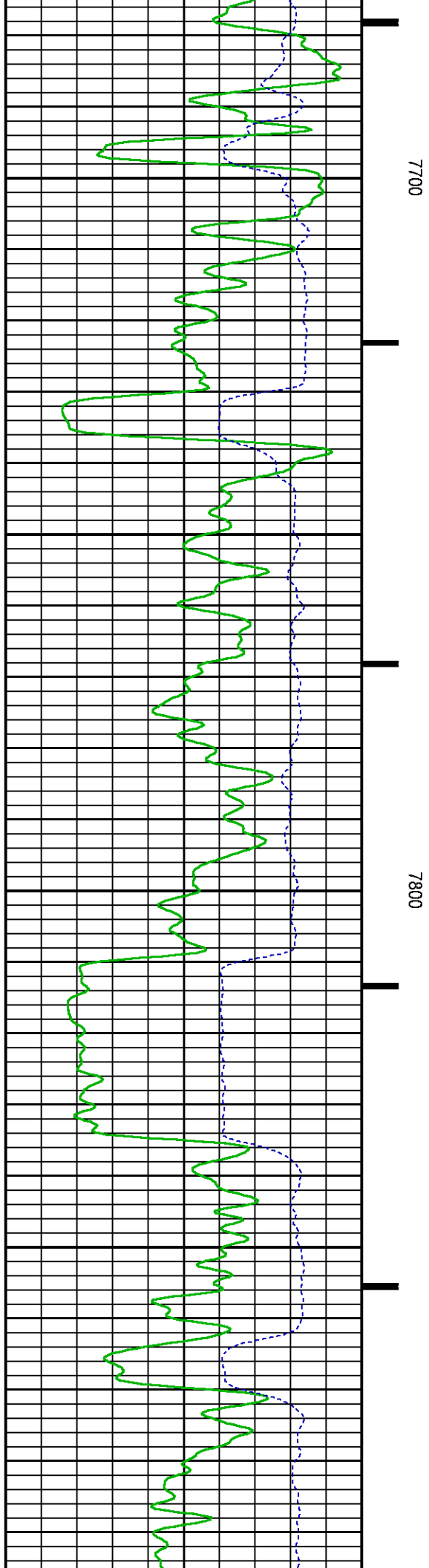
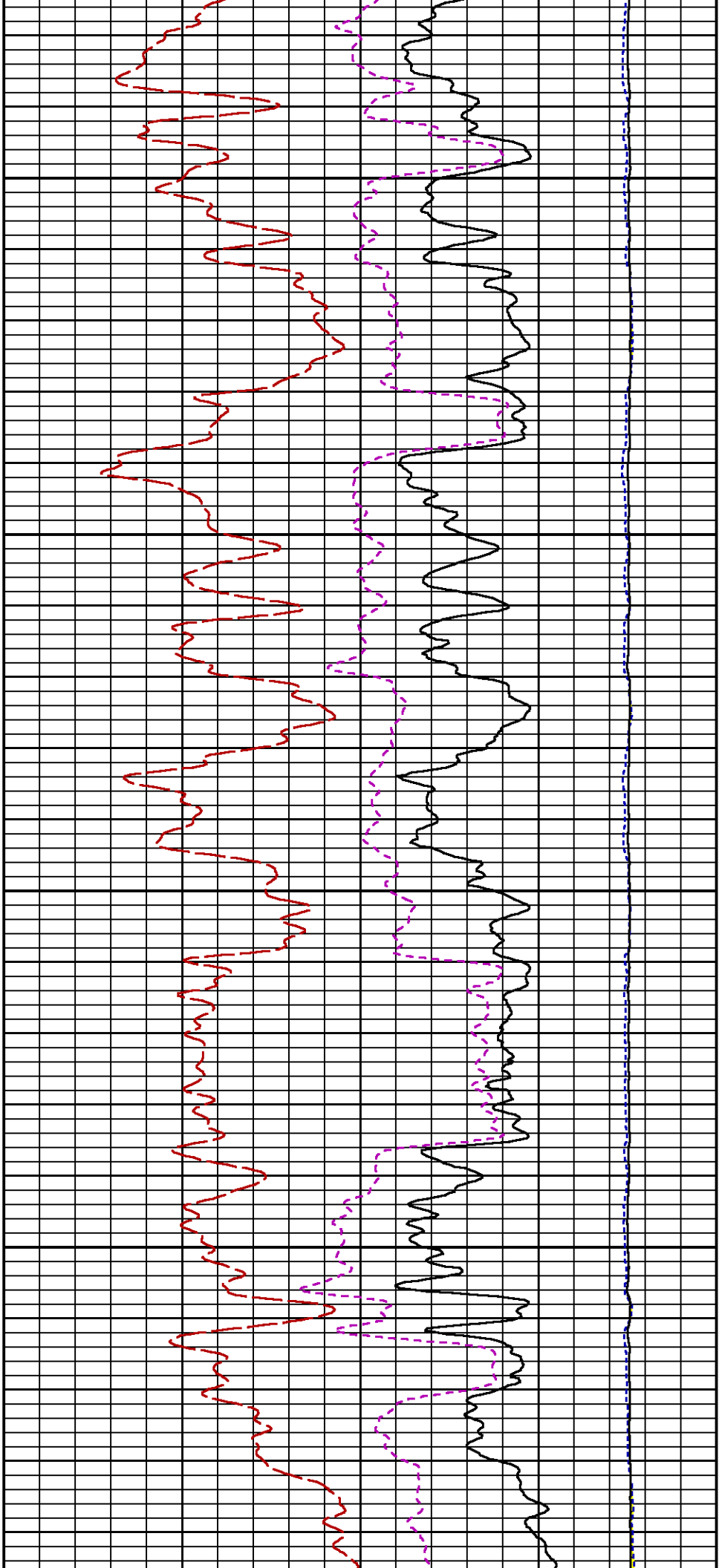
7100

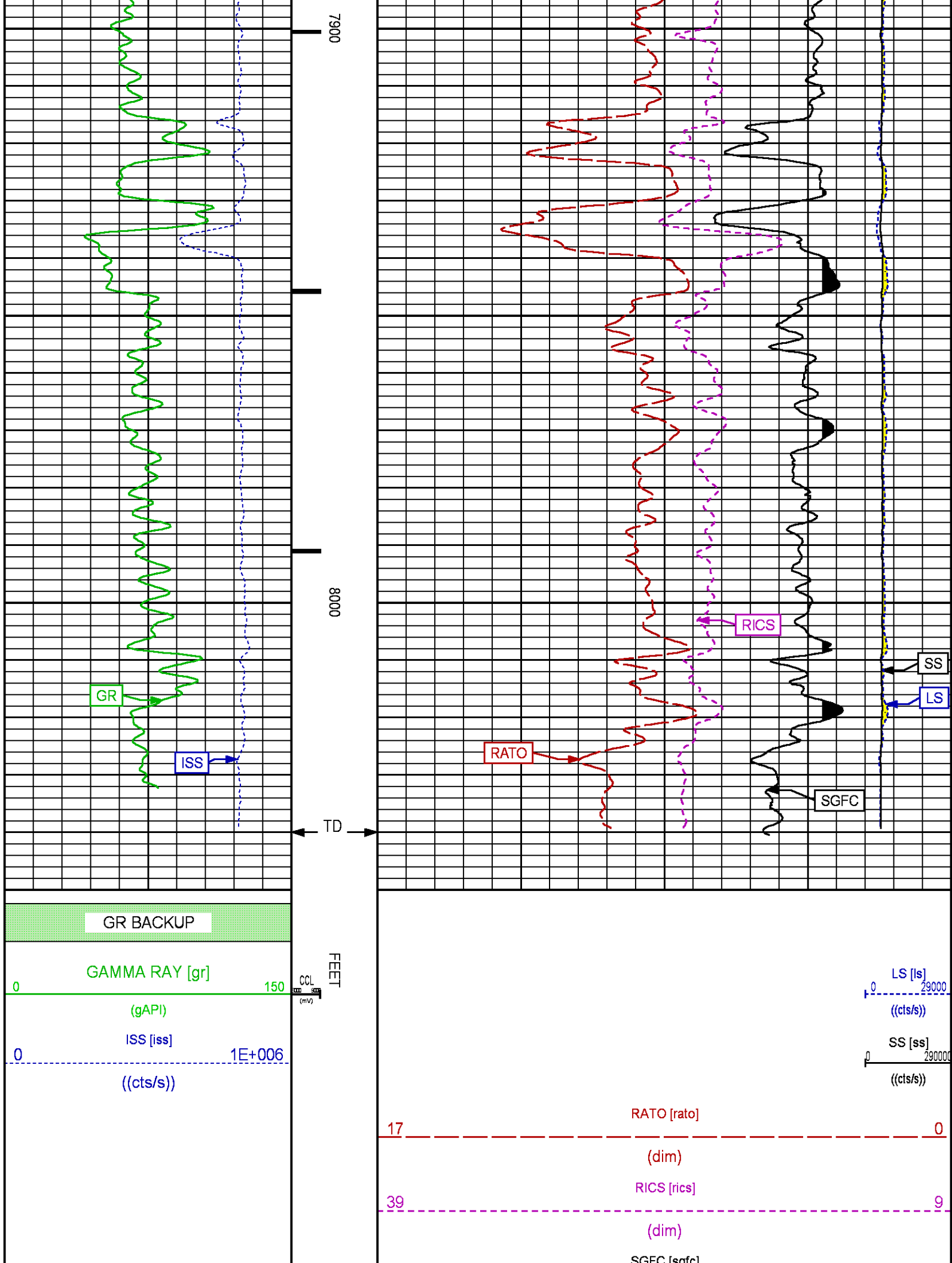
7200











60

(cu)

0

REPEAT PASS

ECLIPS 7.0i ECLIPS General Release Rel 7.0i Thu Jun 08 20:36:10 CDT 2017

Patches: 2

Plotted: Mon Feb 5 19:31:17 2018

PARAMETER AND FILTER SUMMARY REPORT

FILE: /dat1a/LARAMIE_BRUTON_30-14W/p353h01.prm
 LOGGING MODE: DEPTH DIRECTION: UP
 TOP DEPTH: 5279.087 ft BOTTOM DEPTH: 5499.687 ft

SYMMETRIC FILTER

MEASUREMENT TYPE	PARAMETER	VALUE	UNITS	INTERVAL (ft)	
GR	FILTER ()	medium (1)		TOP	BOTTOM

RPM PROCESSING

MEASUREMENT TYPE	PARAMETER	VALUE	UNITS	INTERVAL (ft)	
PNC Parameters	BOREHOLE CONTENTS	FLUID		TOP	BOTTOM
	OPEN/CASED HOLE	CASED HOLE		"	"
	BOREHOLE SIZE	7.88	in	"	"
	LARGEST CASING OD	4.50	in	"	"
	MATRIX	SANDSTONE		"	"

CURVE DESCRIPTION REPORT

CURVE NAME	CREATION DATE	CURVE DESCRIPTION
F1:CCL	N/A	CASING COLLAR LOCATOR
F1:GR	N/A	GAMMA RAY
F1:ISS	N/A	INELASTIC SHORT SPACE COUNT RATE
F1:LS	N/A	LONG SPACE COUNT RATE
F1:RATO	N/A	SHORT/LONG SPACE COUNT RATE RATIO
F1:RICS	N/A	SHORT SPACE INELASTIC TO CAPTURE COUNT RATE RATIO (ISS/CSS)
F1:SGFC	N/A	BOREHOLE AND DIFFUSION CORRECTED SIGMA
F1:SS	N/A	SHORT SPACE COUNT RATE

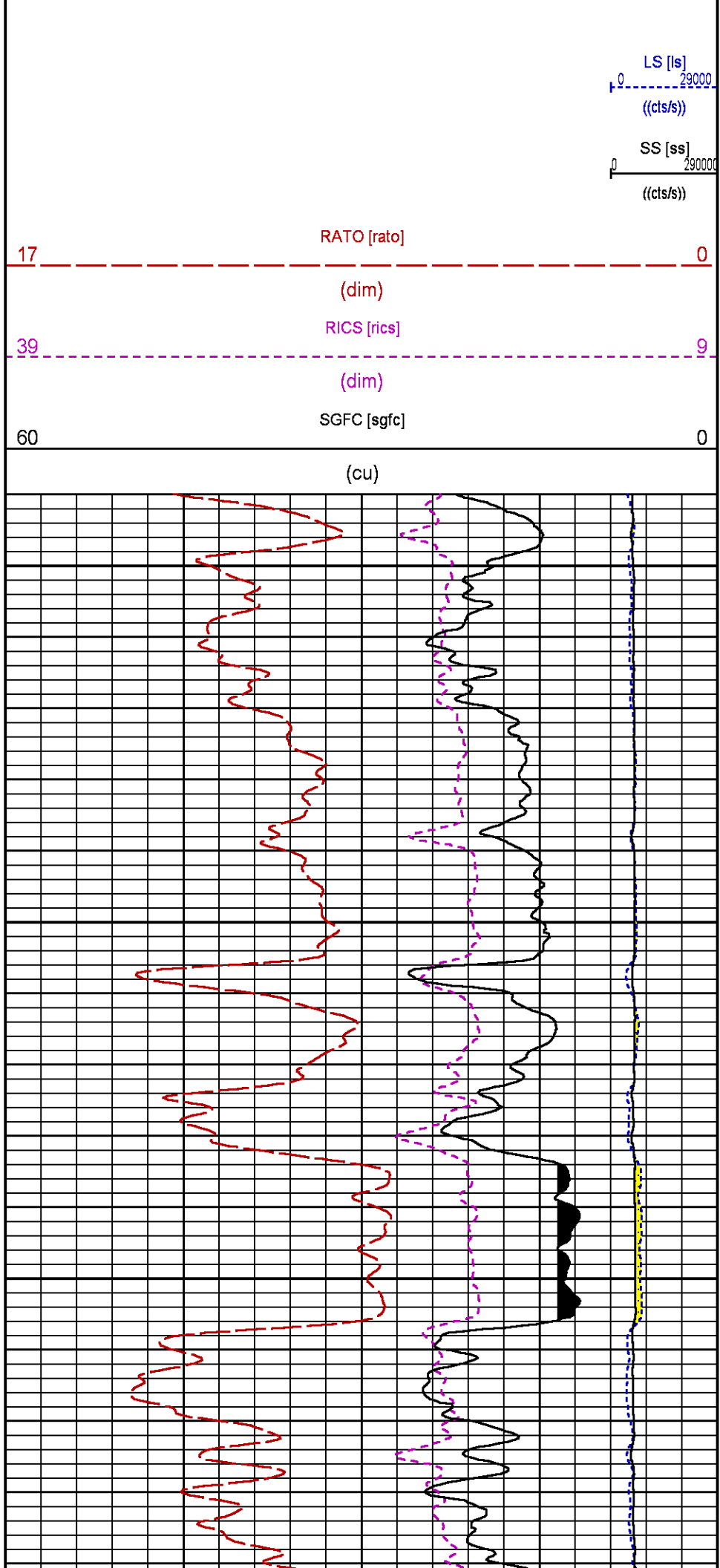
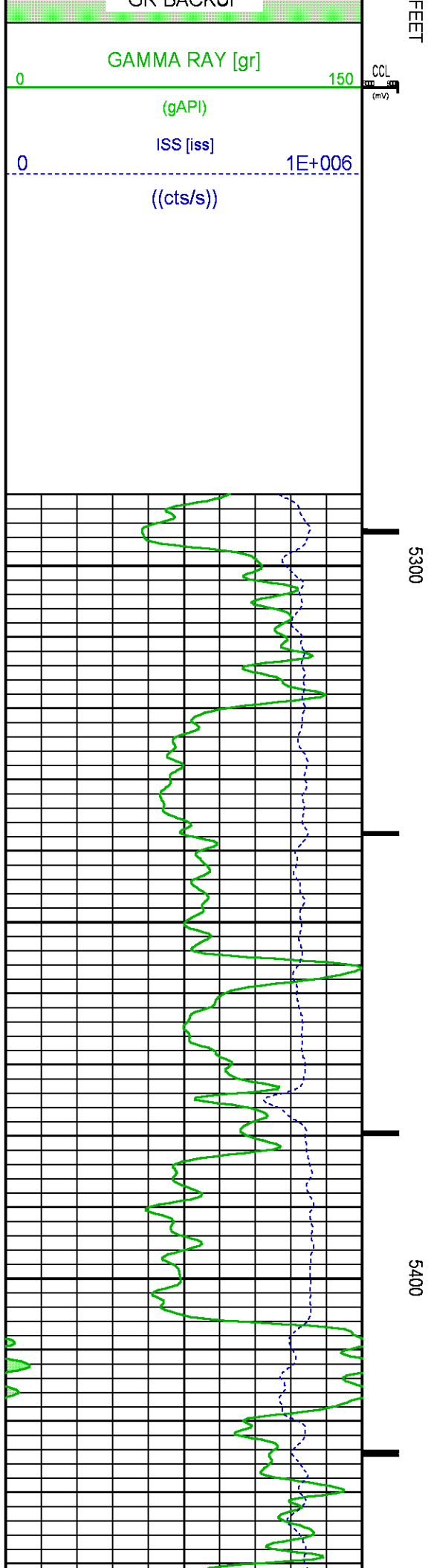
CURVE MEASURE POINT OFFSET

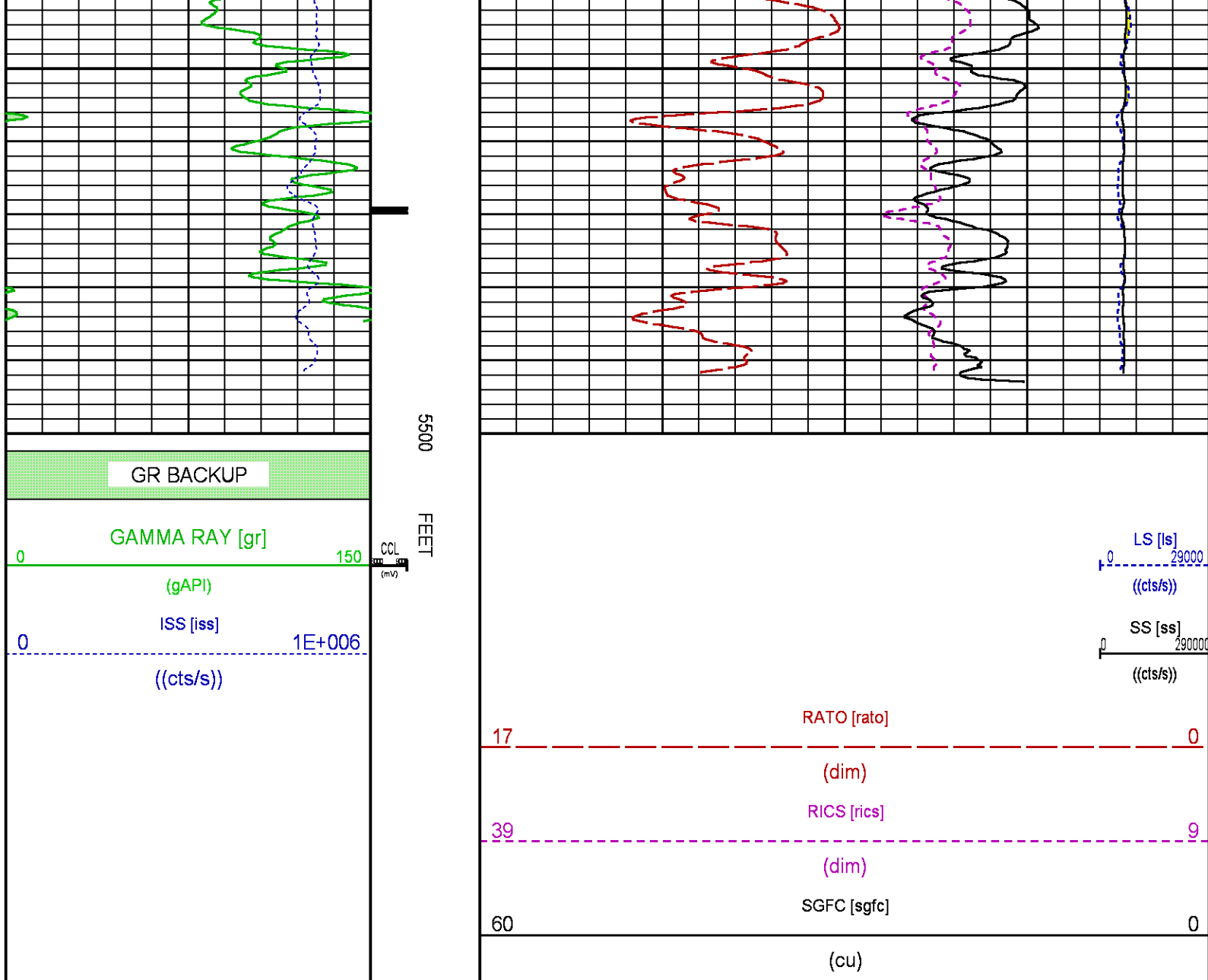
CURVE	OFFSET (ft)	CURVE	OFFSET (ft)	CURVE	OFFSET (ft)	CURVE	OFFSET (ft)
CCL	-26.00	ISS	-12.75	RATO	-12.75	SGFC	-12.75
GR	-23.00	LS	-12.75	RICS	-12.75	SS	-12.75

Presentation : SysA:/dat1a/LARAMIE_BRUTON_30-14W/30-14W_RPM_REPEAT.fvpdf [5"/100' Scale]
 Plot Interval : 5290 - 5500 Feet

Data File 1 : F1 : SysA:C:\Users
 Created On : 2/5/2018
 Company : LARAMIE ENERGY LLC
 Well : BRUTON 30-14W
 Field : VEGA
 File Interval : 5263 - 5508 Feet
 OCT : p353h

GR BACKUP





INSTRUMENT CONFIGURATION

Source File: C:\Users\newetim\Desktop\LARAMIE_BRUTON_30-14WRPM-tdg

A3 CABLEHEAD
Diameter : 1.37"

PCM POWER SUPPLY
Diameter : 1.70"
Length : 3.86'
Weight : 18 lbs
Series : 8250EA
Mnemonic : PCM

34.08'

TELEMETRY / CCL

Diameter : 1.70"
Length : 4.46'
Weight : 20 lbs
Series : 8248ED
Mnemonic : PCM
Measure Point: 1.00': CCL MP

CCL MP 26.03'

GAMMA RAY

Diameter : 1.70"
Length : 3.02'
Weight : 15 lbs
Series : 8262XA
Mnemonic : GR
Measure Point: 0.89': GR MP

GR MP 22.90'

RPM ELECTRONICS

Diameter : 1.70"
Length : 4.48'
Weight : 16 lbs
Series : 8281EA
Mnemonic : RPM

RPM C DETECTOR SECTION

Diameter : 1.70"
Length : 9.40'
Weight : 41 lbs
Series : 8283PA
Mnemonic : RPM
Measure Point: 5.45': XLS MP
Measure Point: 5.04': LS MP
Measure Point: 4.79': SS MP

XLS MP 13.58'
LS MP 13.16'
SS MP 12.91'

RPM SOURCE SECTION

Diameter : 1.70"
Length : 4.70'
Weight : 18 lbs
Series : 8281FA
Mnemonic : RPM

TEMPERATURE / PRESSURE

Diameter : 1.70"
Length : 3.30'
Weight : 13 lbs

Weight : 8255XA
Series : SRPL
Mnemonic : SRPL
Measure Point: 1.52': TEMP MP

TEMP MP
PRES MP 1.65'

BULL PLUG 1 11/16

0.00'

TOTAL LENGTH: 34.08'
TOTAL WEIGHT: 144 lbs
MAX DIAMETER: 0'1.70"

**BAKER
HUGHES**
a GE company



ECLIPS

COMPANY LARAMIE ENERGY LLC
WELL BRUTON 30-14W
FIELD VEGA
COUNTY MESA **STATE** COLORADO

FILE NO:
CH132062
API NO:
05077104780000

LOCATION:

SHL: 2611' FNL & 1883' FEL
BHL: 1908' FSL & 1310' FWL

ELEVATIONS:

KB 7673 FT
DF
GL 7643 FT

SEC 30 **TWP** 9S **RGE** 93W

DATE 05-Feb-2018

