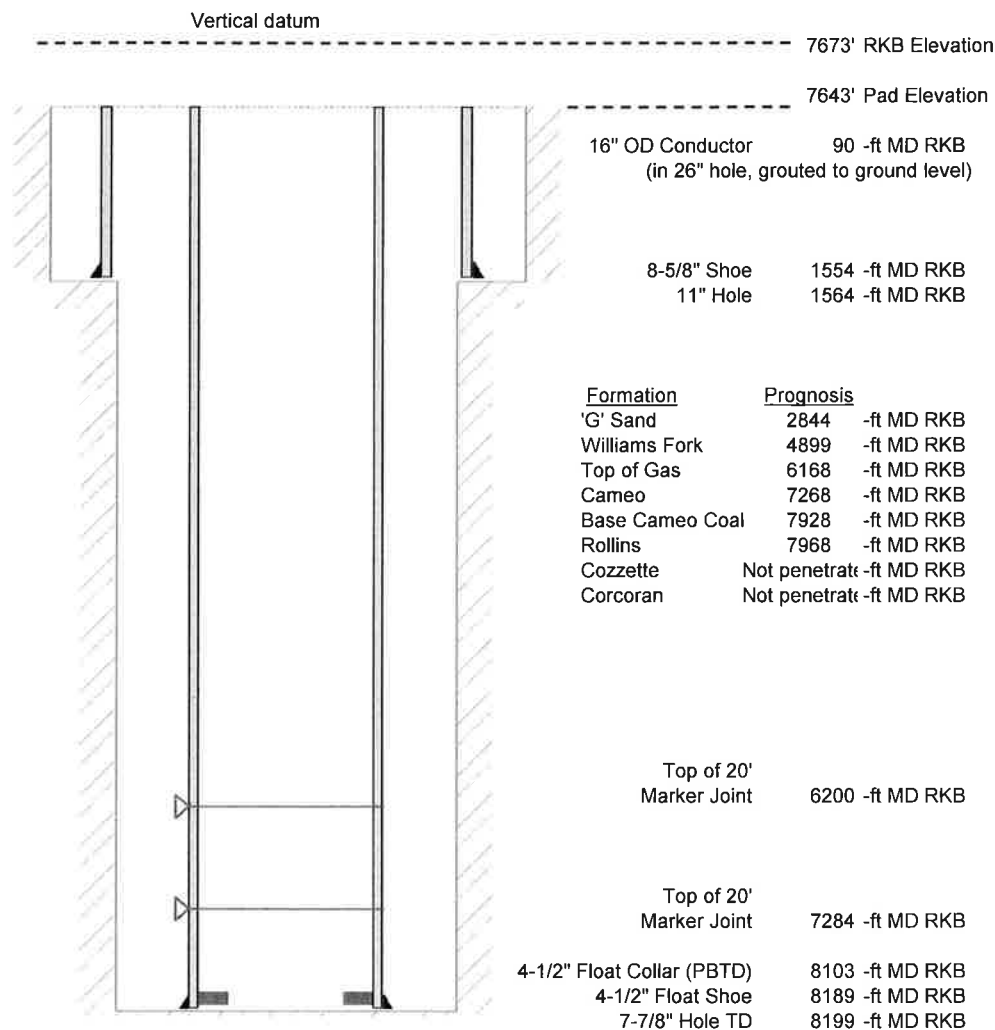


Laramie Energy, LLC
 Bruton 30-14W
 Slot A-8
 H&P 522 (30-ft KB)

API # : 05-077-10478
 NW/4 SE/4 S30/T9S/R93W/6th PM
 Mesa County, CO
 Date of diagram : 12/8/2017



Cementing details

8-5/8" 24# Surface Csg	Lead	Tail
Density (ppg)	12.3	12.8
Volume (sx)	197	109
Yield (cf/sx)	2.45	2.18
Top (ft RKB)	0	785
Bottom (ft RKB)	785	1554
Returns (full or partial)	Full	Full

4-1/2" 11.6# Nexteel Prod Csg	Lead	Tail
Density (ppg)	12.5	13.3
Volume (sx)	867	461
Yield (cf/sx)	1.94	1.73
Est Top (ft RKB)	115	5815
Est Bottom (ft RKB)	5815	8189
Returns (full or partial)	Full	Full

Displacement
8.3 ppg
125.5 bbls

Other Remarks : 33 bbls cement back on surface job. 33 bbls spacer back on production job.