

# T1S, R104W, 6th P.M.

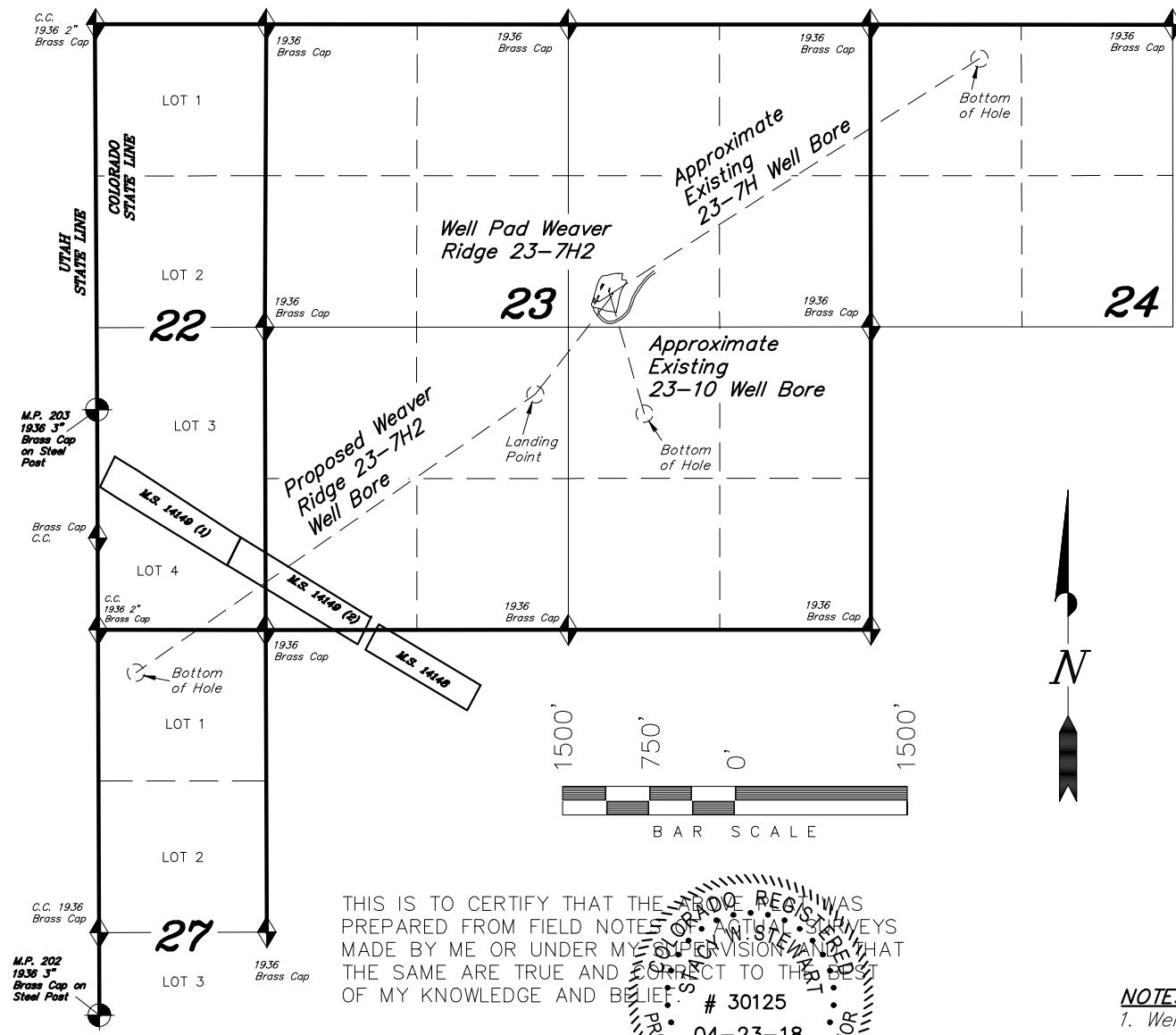
ROBERT L. BAYLESS PRODUCER LLC

**TOP HOLE FOOTAGES**  
 WEAVER RIDGE 23-7H2  
 2373' FNL & 2266' FEL, Sec. 23

**MULTI WELL PLAN**  
**SECTION DRILLING MAP**  
 WEAVER RIDGE 23-7H2  
 SURFACE LOCATION: NE 1/4 OF SECTION 23, T1S, R104W, 6TH P.M. RIO BLANCO COUNTY, COLORADO.

**TOP OF PRODUCING INTERVAL FOOTAGES**  
 WEAVER RIDGE 23-7H2  
 2060' FSL & 2365' FWL, Sec. 23

**BOTTOM HOLE FOOTAGES**  
 WEAVER RIDGE 23-7H2  
 375' FNL & 330' FWL, Sec. 27



LATITUDE & LONGITUDE Surface position of Wells (NAD 83)		
WELL	LATITUDE	LONGITUDE
EXIST. 23-10	39°56'51.21" (39.947558)	109°02'05.04" (109.034733)
EXIST. 23-7H	39°56'51.03" (39.947508)	109°02'04.64" (109.034622)
WEAVER RIDGE 23-7H2	39°56'50.84" (39.947454)	109°02'04.70" (109.034638)

LATITUDE & LONGITUDE Landing Point (NAD 83)		
WELL	LATITUDE	LONGITUDE
WEAVER RIDGE 23-7H2	39°56'42.31" (39.945086)	109°02'13.31" (109.037030)

LATITUDE & LONGITUDE Bottom Hole Position (NAD 83)		
WELL	LATITUDE	LONGITUDE
WEAVER RIDGE 23-7H2	39°56'18.26" (39.938405)	109°02'58.16" (109.049488)

THIS IS TO CERTIFY THAT THE MAP WAS PREPARED FROM FIELD NOTES OF ACTUAL SURVEYS MADE BY ME OR UNDER MY SUPERVISION AND THAT THE SAME ARE TRUE AND CORRECT TO THE BEST OF MY KNOWLEDGE AND BELIEF.

# 30125  
 04-23-18

REGISTERED LAND SURVEYOR  
 STATE OF COLORADO

**NOTES:**  
 1. Well footages are measured at right angles to the Section Lines.

◆ = SECTION CORNERS LOCATED

**TRI STATE LAND SURVEYING & CONSULTING**  
 180 NORTH VERNAL AVE. - VERNAL, UTAH 84078  
 (435) 781-2501

DATE SURVEYED: 09-24-13	SURVEYED BY: G.D.O.
DATE DRAWN: 04-23-18	DRAWN BY: F.T.M.
REVISED:	SCALE: 1" = 1500'