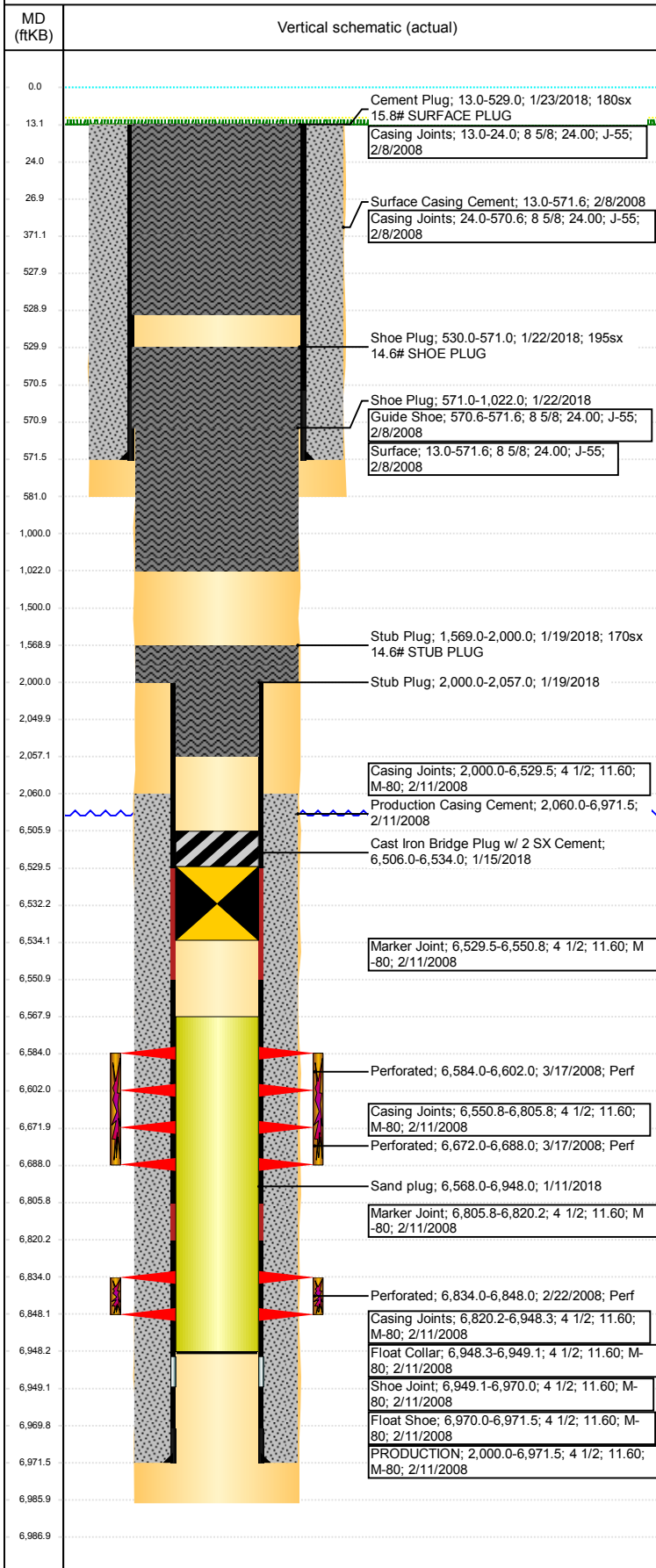


Wellbore Schematic Input Report

Well Name: RYANN STATE C16-27

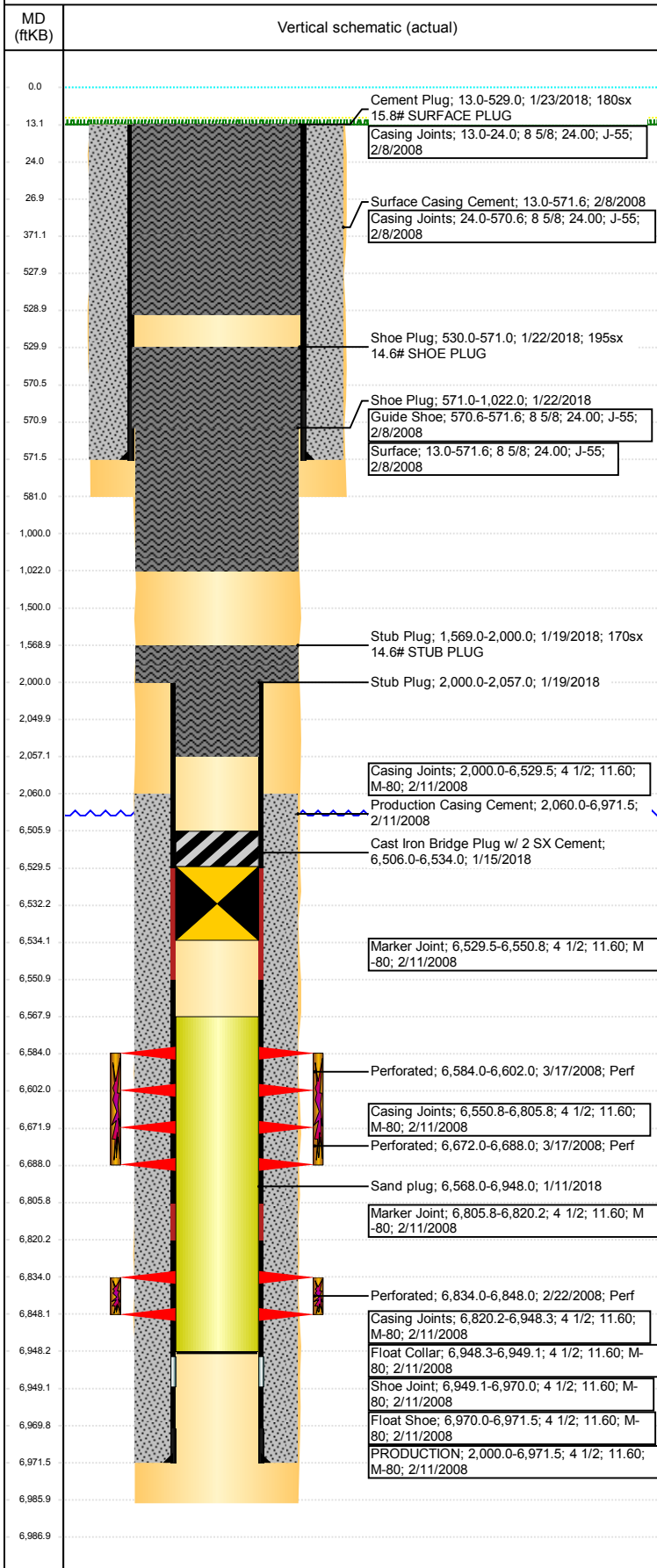
VERTICAL - ORIGINAL HOLE, 4/23/2018 7:59:32 AM



Well Header							
API 05-123-25444		Well Report Center 425662680			Well Configuration Type VERTICAL		
Original KB Elevation (ft) 4,677		KB - GL / MSL (ftKB) 13.00		Spud Date 2/8/2008		P & A Date 1/19/2018	
Production Route Watt - A3-09			Well Production Status PA				SoRT Ignore Yes
Directions To Well From the intersection of WCR 55 and WCR 46, go West 3/10ths of a mile, then South into location.				Actual Latitude (°) 40.31917720		Actual Longitude (°) -104.55147718	
Comment 318ae Location!							
Congressional Location							
Quarter 3 NW	Quarter 4 NE	Section 16	Township 4	Twnshp N/S Dir N	Range 64	Range E/W Dir W	
Rig Operator							
Rig Operator SCOTT MAREZ, TOOL PUSHER							
Plug Back Total Depths							
Date	Depth (ftKB)	Method			Com		
2/11/2008	6,948.0	CASING TALLY			TOP PLUG		
Wellbore Sections							
Section Des		Size (in)		Act Top, MD (ftKB)		Act Btm, MD (ftKB)	
SURFACE		12 1/4		13		581	
PRODUCTION		7 7/8		581		6,986	
Zone Statuses							
Zone Name		Status Date			Status		
CODELL		1/15/2018			P&A		
NIOBRARA		1/15/2018			P&A		
Casing Strings							
Surface, 571.6ftKB							
Casing Description	Run Date	OD (in)	Wt/Len (l...	Grade	Top, MD (ft...	MD (ftKB)	
Surface	2/8/2008	8 5/8	24.00	J-55	13.0	571.6	
PRODUCTION, 6,971.5ftKB							
Casing Description	Run Date	OD (in)	Wt/Len (l...	Grade	Top, MD (ft...	MD (ftKB)	
PRODUCTION	2/11/2008	4 1/2	11.60	M-80	0.1	6,971.5	
Cement							
Des		Start Date		Top (ftKB)		Btm (ftKB)	
Surface Casing Cement		2/8/2008		13.0		571.6	
Production Casing Cement		2/11/2008		2,060.0		6,971.5	
Stub Plug		1/19/2018		1,569.0		2,000.0	
Stub Plug		1/19/2018		2,000.0		2,057.0	
Shoe Plug		1/22/2018		530.0		571.0	
Shoe Plug		1/22/2018		571.0		1,022.0	
Cement Plug		1/23/2018		13.0		529.0	
Proposed Cement							
Des				Top (ftKB)		Btm (ftKB)	
DUMP BAIL				6,506.0		6,532.0	
COURTESY PLUG				2,000.0		2,050.0	
COURTESY PLUG				1,500.0		2,000.0	
SHOE PLUG				371.0		1,000.0	
SHOE PLUG				13.1		371.0	
Tubing Strings							
Tubing Description	Run Date	String ...	ID (in)	Wt (lb/ft)	Grade	Len (ft)	Set De...
Tubing - Production	1/7/2009	2 3/8	2.00	4.70	J-55	6,801.46	
Tubing Components							
Item Des	OD (in)	Wt (lb/ft)	Grade	Jts	Len (ft)	Btm (ftKB)	Btm (TVD) (ftKB)
Tubing Pup Joint	2 3/8	4.70	J-55	1	10.00	21.0	
Tubing	2 3/8	4.70	J-55	219	6,789.36	6,810.4	
Pump Seating	2 3/8			1	1.20	6,811.6	
Nipple							
Blade Bit	3 7/8			1	0.90	6,812.5	
Other In Hole							
Run Date	Des			OD (in)	Top (ftKB)	Btm (ftKB)	
1/11/2018	Sand plug			3.99	6,568.0	6,948.0	
1/15/2018	Cast Iron Bridge Plug w/ 2 SX Cement			3.99	6,506.0	6,534.0	

Well Name: RYANN STATE C16-27

VERTICAL - ORIGINAL HOLE, 4/23/2018 7:59:32 AM



Proposed Other In Hole			
Des	OD (in)	Top (ftKB)	Btm (ftKB)
Cast Iron Bridge Plug	4	6,532.0	6,534.0
Logs			
Date	Type	Top, MD (ftKB)	Btm, MD (ftKB)
2/11/2008	Caliper/Comp.Density/Neutron/GR/SP /ML	2,550.0	6,964.0
2/11/2008	DIL/GR/SP/Caliper	572.0	6,984.0
2/20/2008	CBL/CCL/GR	1,800.0	6,904.0
11/8/2017	GYRO	12.0	6,725.0

Perforation Data				
Linked Zone	Sum of Entered Shot Total	Top (ftKB)	Btm (ftKB)	Date
NIOBRARA, ORIGINAL HOLE	64	6,584.00	6,602.00	3/17/2008
NIOBRARA, ORIGINAL HOLE	64	6,672.00	6,688.00	3/17/2008
CODELL, ORIGINAL HOLE	56	6,834.00	6,848.00	2/22/2008
Total (Sum)	184			

Job Supply Amounts					
Supply Item Des	Type	Uni...	Job Category	Total...	Total...
WATER - COMPLETION/RE COMP	PUBLIC	bbl	ABANDON	770.0	330.0
				0	440.0

Daily Cost Breakdown by Category		
Sum of Field Est...	Cost Description	Note
3,000.00	Downhole	TRUCKING, RIG MOVE & WATER
3,850.00	Downhole	GAS MONITORS & GENERATOR
34,800.00	Downhole	RIG & CREW
1,550.00	Downhole	SLICKLINE SERVICES
7,500.00	Downhole	WSL
6,500.00	Downhole	WIRELINE SERVICES
2,000.00	Downhole	PUMP SAND PLUG
29,500.00	Downhole	CEMENT SERVICES
2,500.00	Downhole	SAND PLUG
700.00	Downhole	HYDROTESTING
3,000.00	Downhole	TOOL RENTALS
1,000.00	Downhole	WASTE WATER DISPOSAL
4,500.00	Downhole	WASTE DISPOSAL
100,400.00		