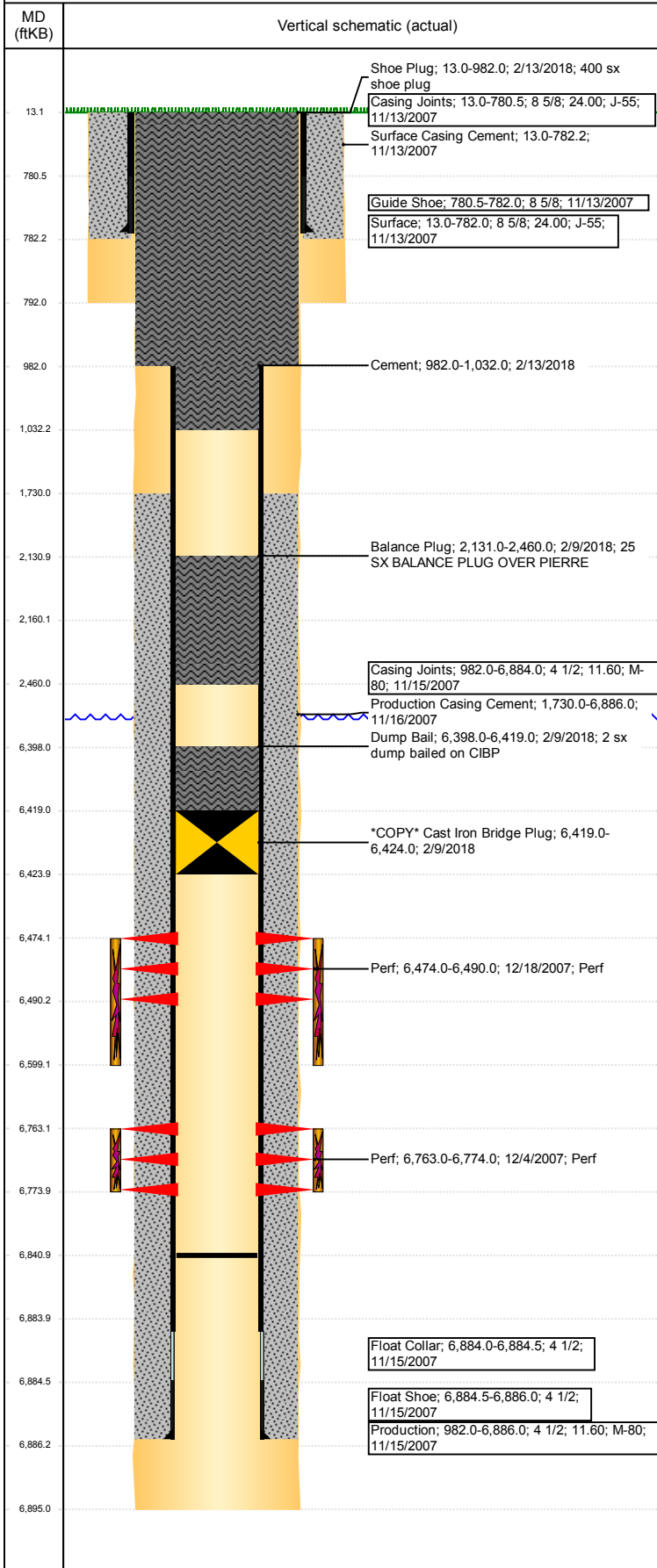


Well Name: THRALL USX AA19-25

VERTICAL - ORIGINAL HOLE, 4/16/2018 3:27:57 PM



Well Header							
API	05-123-26516	Well Report Center	425662204	Well Configuration Type	VERTICAL		
Original KB Elevation (ft)	4,660	KB - GL / MSL (ftKB)	13.00	Spud Date	11/13/2007	P & A Date	2/13/2018
Production Route	Watt - B3-03	Well Production Status	PA	SoRT Ignore	Yes		
Directions To Well	WCR 66 & 61, NORTH 2/10, EAST 1/10, NORTH INTO			Actual Latitude (°)	40.46910048	Actual Longitude (°)	-104.48510762
Comment	TD DISCREPANCY: DRL RPT=6908', ST CMP=6895'						
Congressional Location							
Quarter 3	Quarter 4	Section	Township	Twnshp N/S Dir	Range	Range E/W Dir	
NW	SW	19	6	N	63	W	
Rig Operator							
Rig Operator	BRANDON, RIG OPERATOR						
Plug Back Total Depths							
Date	Depth (ftKB)	Method	Com				
10/31/2008	6,841.0	TAG	C/O WELL W/N2, LAND TBG				
Wellbore Sections							
Section Des	Size (in)	Act Top, MD (ftKB)	Act Btm, MD (ftKB)				
SURFACE	12 1/4	13	792				
Production	7 7/8	792	6,895				
Zone Statuses							
Zone Name	Status Date	Status					
NIOBRARA	2/9/2018	P&A					
CODELL	2/9/2018	P&A					
Casing Strings							
Surface, 782.0ftKB							
Casing Description	Run Date	OD (in)	Wt/Len (l...)	Grade	Top, MD (ft...)	MD (ftKB)	
Surface	11/13/2007	8 5/8	24.00	J-55	13.0	782.0	
Production, 6,886.0ftKB							
Casing Description	Run Date	OD (in)	Wt/Len (l...)	Grade	Top, MD (ft...)	MD (ftKB)	
Production	11/15/2007	4 1/2	11.60	M-80	13.0	6,886.0	
Cement							
Des	Start Date	Top (ftKB)	Btm (ftKB)				
Surface Casing Cement	11/13/2007	13.0	782.2				
Production Casing Cement	11/16/2007	1,730.0	6,886.0				
Dump Bail	2/9/2018	6,398.0	6,419.0				
Balance Plug	2/9/2018	2,131.0	2,460.0				
Shoe Plug	2/13/2018	13.0	982.0				
	2/13/2018	982.0	1,032.0				
Proposed Cement							
Des	Top (ftKB)	Btm (ftKB)					
Balance Plug	2,160.0	2,460.0					
Dump Bail	6,398.0	6,419.0					
Shoe Plug	13.0	982.0					
	982.0	1,032.0					
Tubing Strings							
Tubing Description	Run Date	String...	ID (in)	Wt (lb/ft)	Grade	Len (ft)	Set De...
Tubing	10/31/2008	2 3/8	2.00	4.70	J-55	6,732.97	
Tubing Components							
Item Des	OD (in)	Wt (lb/ft)	Grade	Jts	Len (ft)	Btm (ftKB)	Btm (TVD) (ftKB)
Tubing Pup Joint	2 3/8	4.70	J-55	1	6.00	16.0	
Tubing Pup Joint	2 3/8	4.70	J-55	1	10.00	26.0	
Tubing	2 3/8	4.70	J-55	220	6,715.12	6,741.1	
Seal Nipple	2 3/8	0.00	0	1	1.00	6,742.1	
Blade Bit	3 7/8			1	0.85	6,743.0	
Other In Hole							
Run Date	Des	OD (in)	Top (ftKB)	Btm (ftKB)			
2/9/2018	*COPY* Cast Iron Bridge Plug	3.99	6,419.0	6,424.0			
Proposed Other In Hole							
Des	OD (in)	Top (ftKB)	Btm (ftKB)				
Cast Iron Bridge Plug	3.99	6,419.0	6,424.0				

Well Name: THRALL USX AA19-25

VERTICAL - ORIGINAL HOLE, 4/16/2018 3:27:58 PM



Logs			
Date	Type	Top, MD (ftKB)	Btm, MD (ftKB)
11/28/2007	Cement Bond	1,500.0	6,816.0
10/2/2015	GYRO	10.0	6,650.0

Perforation Data				
Linked Zone	Sum of Entered Shot Total	Top (ftKB)	Btm (ftKB)	Date
CODELL, ORIGINAL HOLE	64	6,474.00	6,490.00	12/18/2007
	44	6,763.00	6,774.00	12/4/2007
Total (Sum)	108			

Job Supply Amounts						
Supply Item Des	Type	Uni...	Job Category	Total...	Total...	Total...
WATER - LOE	PUBLIC	bbl	ABANDON	400.0	400.0	0.0

Daily Cost Breakdown by Category		
Sum of Field Est...	Cost Description	Note
25,037.25	Downhole	RIG COST
4,500.00	Downhole	WSL COST
1,500.00	Downhole	TRUCKING TO MOVE EQUIP
3,041.06	Downhole	WIRELINE SET PLUG AND DUMP BAIL CMT
2,941.05	Downhole	WIRELINE CUT CSG
8,895.12	Downhole	SURF PLUG
1,200.00	Downhole	COMP FLUID
778.91	Downhole	HYDRO TEST TBG
5,851.97	Downhole	RENTAL OF BOPS AND 4 1/2 EQUIP
53,745.36		