



6899 Pecos Street, Unit C
Denver, Colorado 80221

CLIENT: Anadarko

LOGGED BY: Zach Mahaffey

PROJECT MANAGER: Mike Jahn P.G.

DRILLING CONTRACTOR: Tasman Geosciences

DRILLING EQUIPMENT: AMS Powerprobe 9300-SK

DRILL BIT SIZE (INCHES): 2.375

DATE STARTED - COMPLETED: 9/2/2016

TOTAL WELL DEPTH (FT. BGS): 42

DEPTH TO WATER (FT. BGS): 32.5

Ernie F Adamson GU-62N65W/21SWSW

BORING / WELL ID: BH01 (Destroyed)

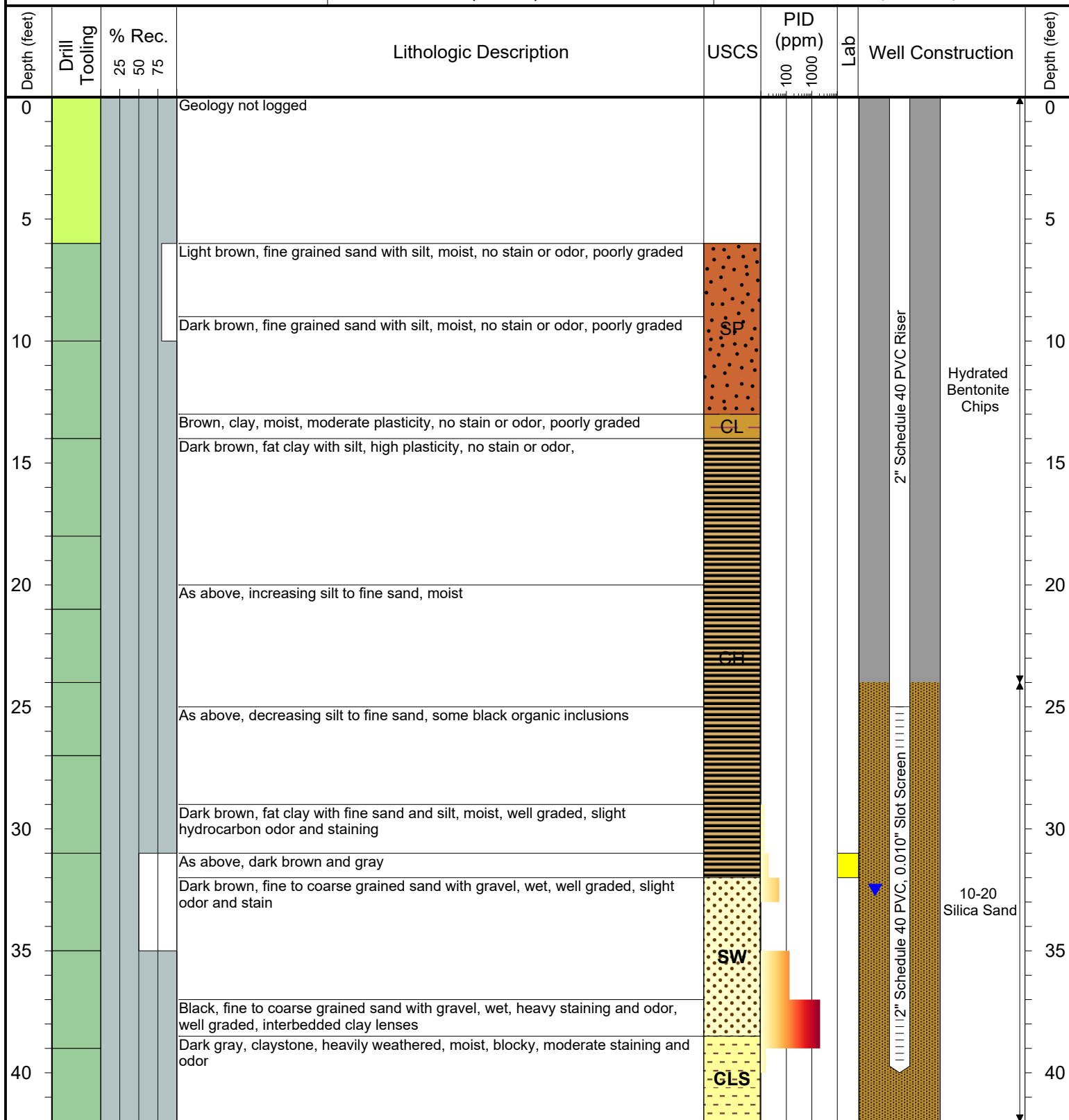
LOCATION: Flush Mount

NORTHING (CO STATE PLANE): 40.11775031

EASTING (CO STATE PLANE): -104.6691788

CASING ELEVATION (FT. AMSL): 4895.79

GROUND ELEVATION (FT. AMSL): 4895.89



Drilling / Sample Method:

Macro-Core
Expendable Well Tip
Hand Auger

Laboratory Sample Types:

Geotechnical Lab
Analytical Chemistry Lab
Geotechnical & Analytical Chemistry Lab



6899 Pecos Street, Unit C
Denver, Colorado 80221

CLIENT: Anadarko

LOGGED BY: Zach Mahaffey

PROJECT MANAGER: Mike Jahn P.G.

DRILLING CONTRACTOR: Tasman Geosciences

DRILLING EQUIPMENT: AMS Powerprobe 9300-SK

DRILL BIT SIZE (INCHES): 2.375

DATE STARTED - COMPLETED: 9/2/2016

TOTAL WELL DEPTH (FT. BGS): 42

DEPTH TO WATER (FT. BGS): 35

Ernie F Adamson GU-62N65W/21SWSW

BORING / WELL ID: BH02 (Destroyed)

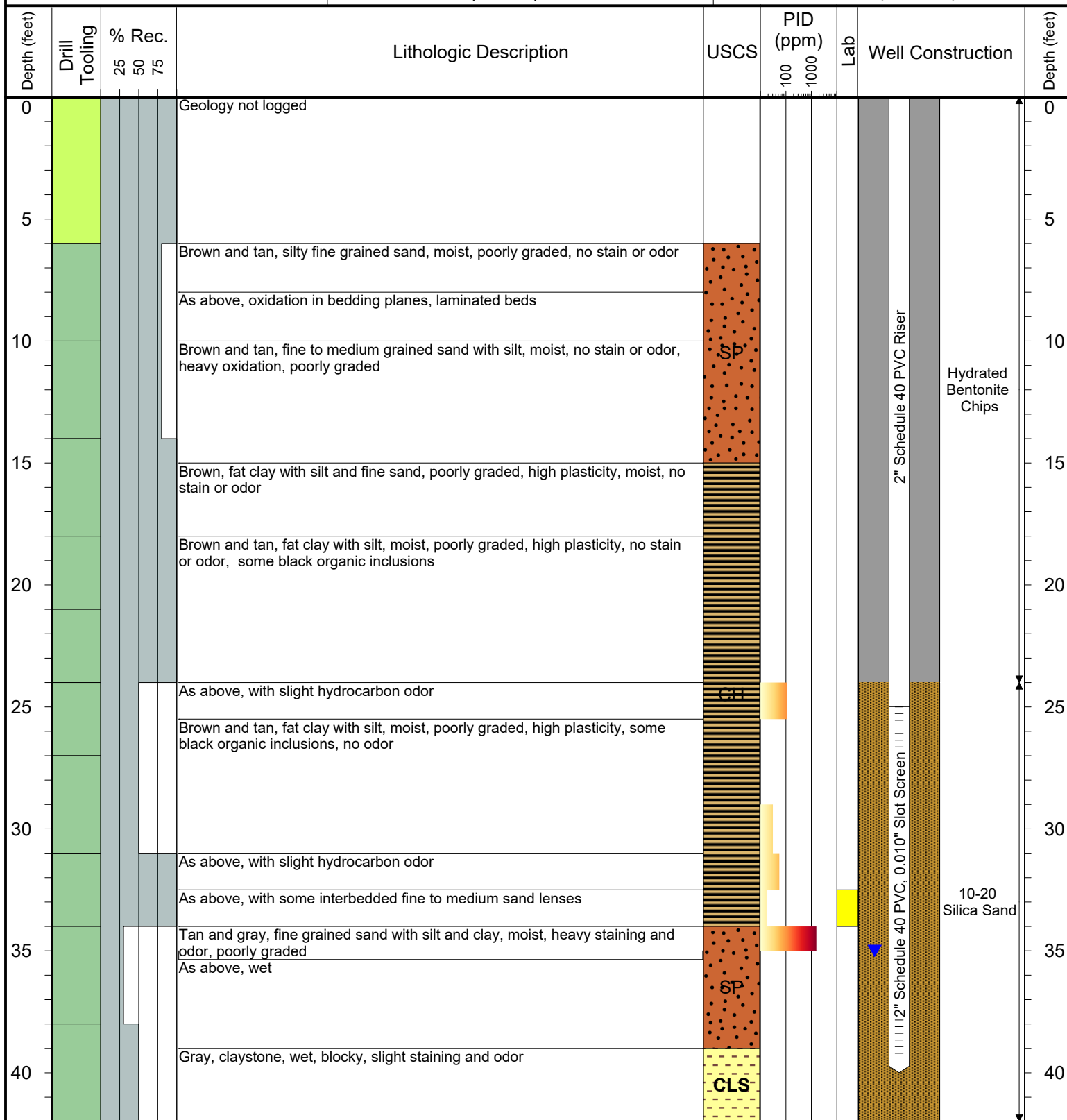
LOCATION: Flush Mount

NORTHING (CO STATE PLANE): 40.11759039

EASTING (CO STATE PLANE): -104.669006

CASING ELEVATION (FT. AMSL): 4897.79

GROUND ELEVATION (FT. AMSL): 4898.1



Drilling / Sample Method:

Macro-Core
Expendable Well Tip
Hand Auger

Laboratory Sample Types:

Geotechnical Lab
Analytical Chemistry Lab
Geotechnical & Analytical Chemistry Lab



6899 Pecos Street, Unit C
Denver, Colorado 80221

CLIENT: Anadarko

LOGGED BY: Zach Mahaffey

PROJECT MANAGER: Mike Jahn P.G.

DRILLING CONTRACTOR: Tasman Geosciences

DRILLING EQUIPMENT: AMS Powerprobe 9300-SK

DRILL BIT SIZE (INCHES): 2.375

DATE STARTED - COMPLETED: 9/2/2016

TOTAL WELL DEPTH (FT. BGS): 40

DEPTH TO WATER (FT. BGS): 32

Ernie F Adamson GU-62N65W/21SWSW

BORING / WELL ID: BH03 (Destroyed)

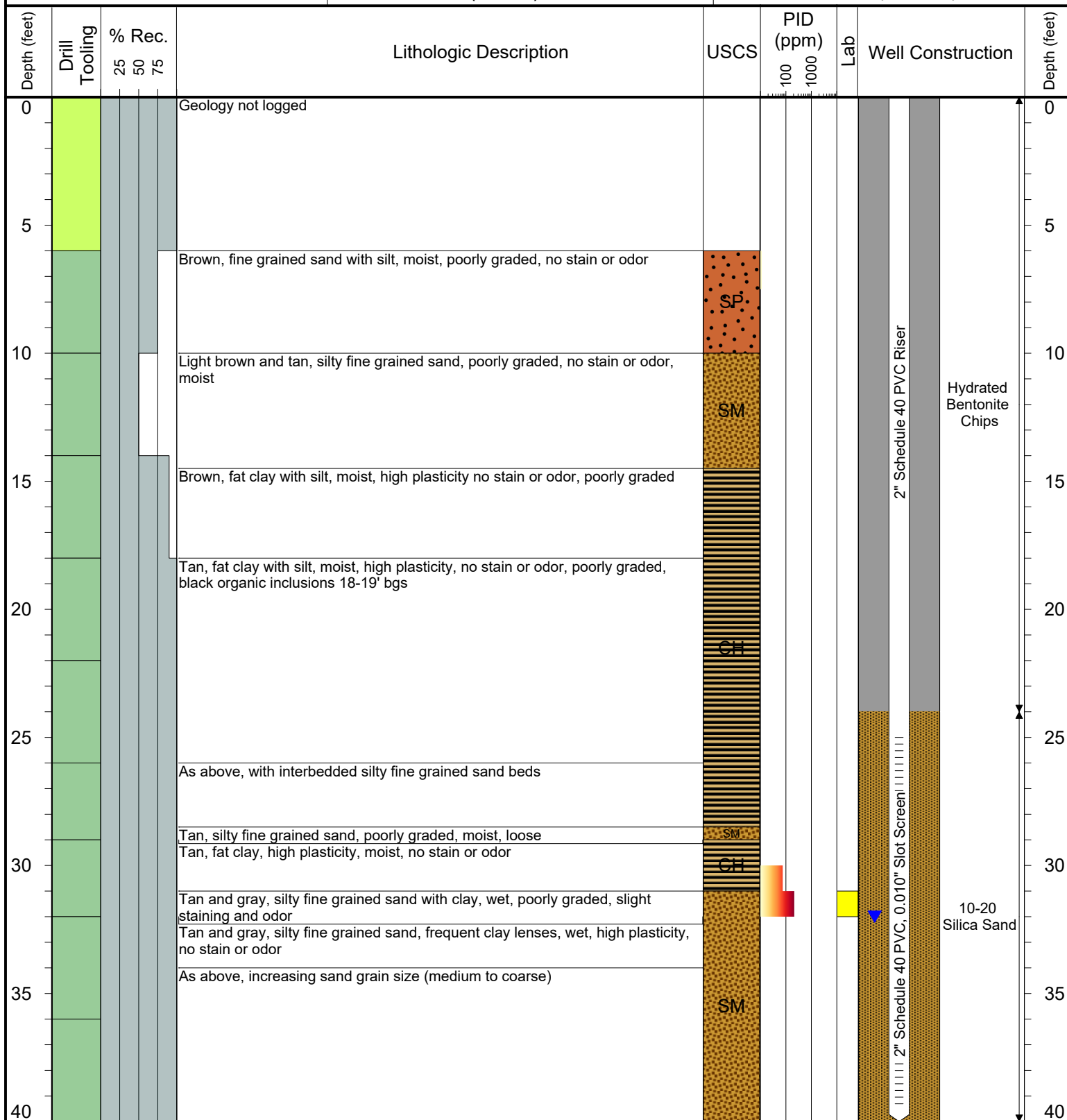
LOCATION: Flush Mount

NORTHING (CO STATE PLANE): 40.11745598

EASTING (CO STATE PLANE): -104.6692

CASING ELEVATION (FT. AMSL): 4896.79

GROUND ELEVATION (FT. AMSL): 4896.82



Drilling / Sample Method:

Macro-Core
Expendable Well Tip
Hand Auger

Laboratory Sample Types:

Geotechnical Lab
Analytical Chemistry Lab
Geotechnical & Analytical Chemistry Lab



6899 Pecos Street, Unit C
Denver, Colorado 80221

CLIENT: Anadarko

LOGGED BY: Zach Mahaffey

PROJECT MANAGER: Mike Jahn P.G.

DRILLING CONTRACTOR: Tasman Geosciences

DRILLING EQUIPMENT: AMS Powerprobe 9300-SK

DRILL BIT SIZE (INCHES): 2.375

DATE STARTED - COMPLETED: 3/7/2017

TOTAL WELL DEPTH (FT. BGS): 43

DEPTH TO WATER (FT. BGS): 31

Ernie F Adamson GU-62N65W/21SWSW

BORING / WELL ID: BH04

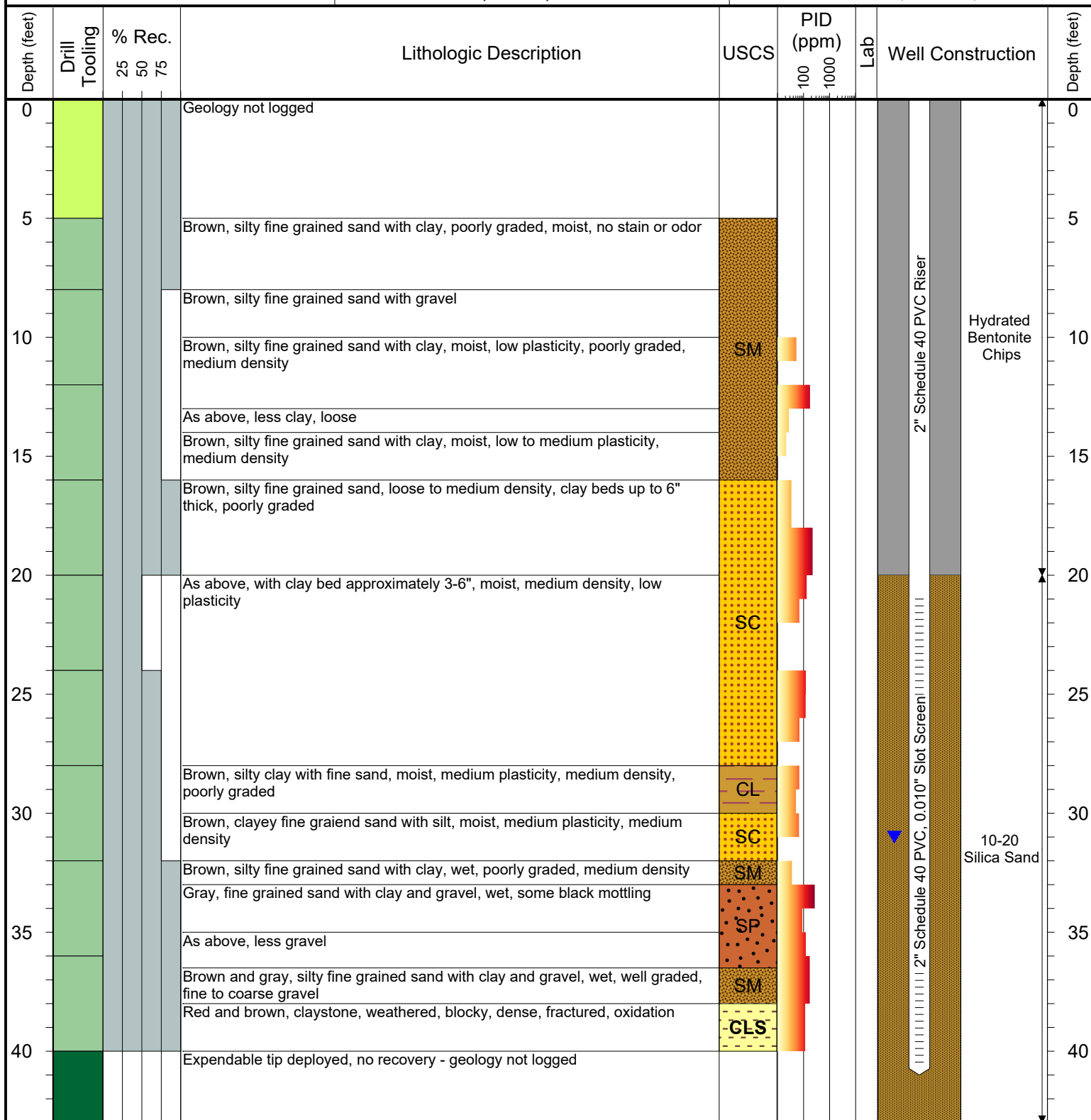
LOCATION: Stick up - 3.48'

NORTHING (CO STATE PLANE): 40.11754548

EASTING (CO STATE PLANE): -104.6691308

CASING ELEVATION (FT. AMSL): 4899.44

GROUND ELEVATION (FT. AMSL): 4895.96



Drilling / Sample Method:

Macro-Core
Expendable Well Tip
Hand Auger

Laboratory Sample Types:

Geotechnical Lab
Analytical Chemistry Lab
Geotechnical & Analytical Chemistry Lab



6899 Pecos Street, Unit C
Denver, Colorado 80221

CLIENT: Anadarko

LOGGED BY: Zach Mahaffey

PROJECT MANAGER: Mike Jahn P.G.

DRILLING CONTRACTOR: Tasman Geosciences

DRILLING EQUIPMENT: AMS Powerprobe 9300-SK

DRILL BIT SIZE (INCHES): 2.375

DATE STARTED - COMPLETED: 3/7/2017

TOTAL WELL DEPTH (FT. BGS): 44

DEPTH TO WATER (FT. BGS): 31

Ernie F Adamson GU-62N65W/21SWSW

BORING / WELL ID: BH05

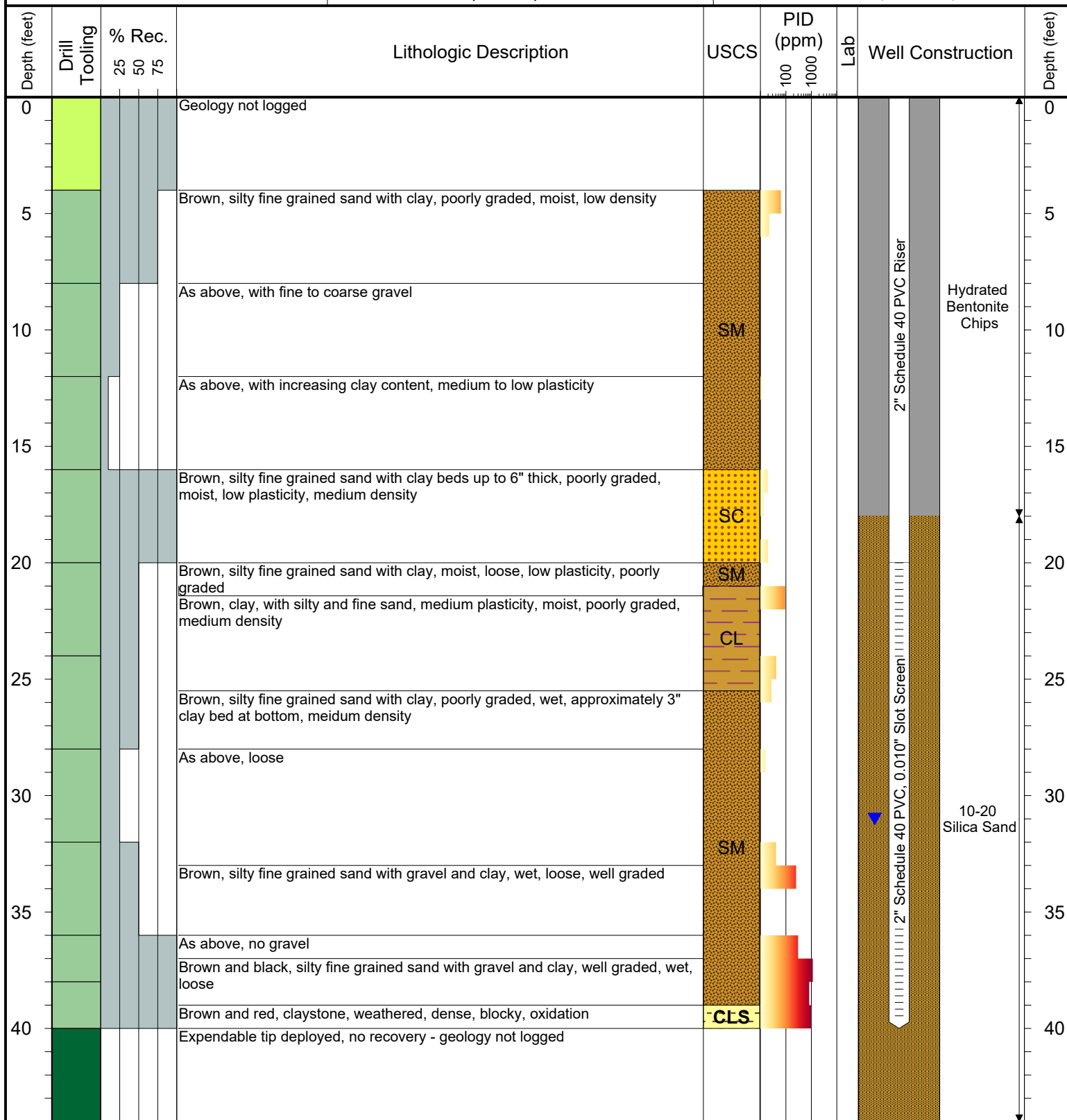
LOCATION: Stick up - 3.67'

NORTHING (CO STATE PLANE): 40.11765166

EASTING (CO STATE PLANE): -104.6691276

CASING ELEVATION (FT. AMSL): 4899.12

GROUND ELEVATION (FT. AMSL): 4895.45



Drilling / Sample Method:

Macro-Core
Expendable Well Tip

Hand Auger

Laboratory Sample Types:

Geotechnical Lab

Analytical Chemistry Lab

Geotechnical & Analytical Chemistry Lab



6899 Pecos Street, Unit C
Denver, Colorado 80221

CLIENT: Anadarko

LOGGED BY: Zach Mahaffey

PROJECT MANAGER: Mike Jahn P.G.

DRILLING CONTRACTOR: Tasman Geosciences

DRILLING EQUIPMENT: AMS Powerprobe 9300-SK

DRILL BIT SIZE (INCHES): 2.375

DATE STARTED - COMPLETED: 3/8/2017

TOTAL WELL DEPTH (FT. BGS): 44

DEPTH TO WATER (FT. BGS): 27

Ernie F Adamson GU-62N65W/21SWSW

BORING / WELL ID: BH06

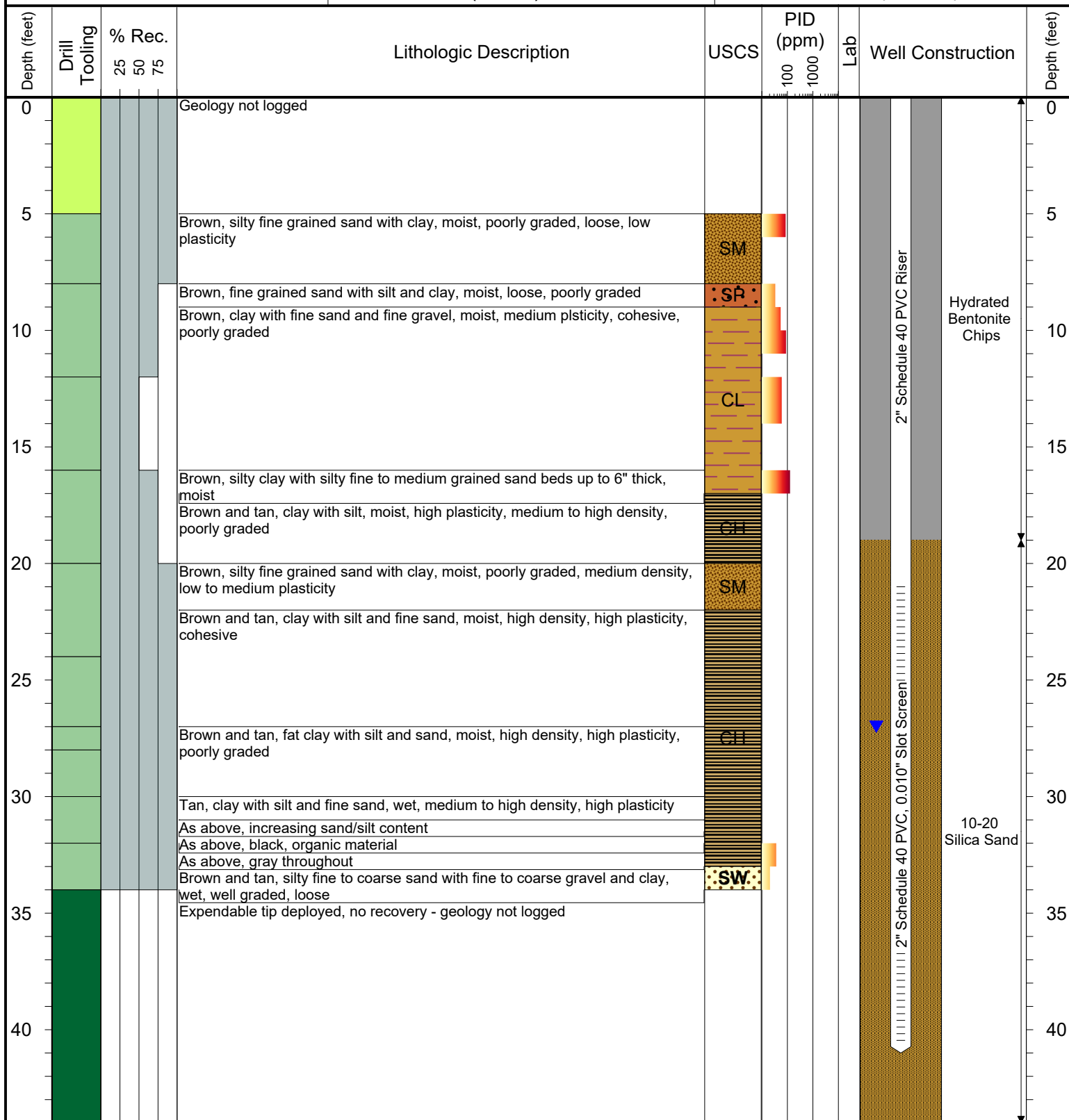
LOCATION: Flush Mount

NORTHING (CO STATE PLANE): 40.11759085

EASTING (CO STATE PLANE): -104.6692828

CASING ELEVATION (FT. AMSL): 4895.45

GROUND ELEVATION (FT. AMSL): 4895.79



Drilling / Sample Method:

Macro-Core
Expendable Well Tip
Hand Auger

Laboratory Sample Types:

Geotechnical Lab
Analytical Chemistry Lab
Geotechnical & Analytical Chemistry Lab



6899 Pecos Street, Unit C
Denver, Colorado 80221

CLIENT: Anadarko

LOGGED BY: Zach Mahaffey

PROJECT MANAGER: Mike Jahn P.G.

DRILLING CONTRACTOR: Tasman Geosciences

DRILLING EQUIPMENT: AMS Powerprobe 9300-SK

DRILL BIT SIZE (INCHES): 2.375

DATE STARTED - COMPLETED: 3/8/2017

TOTAL WELL DEPTH (FT. BGS): 44

DEPTH TO WATER (FT. BGS): 32

Ernie F Adamson GU-62N65W/21SWSW

BORING / WELL ID: BH07

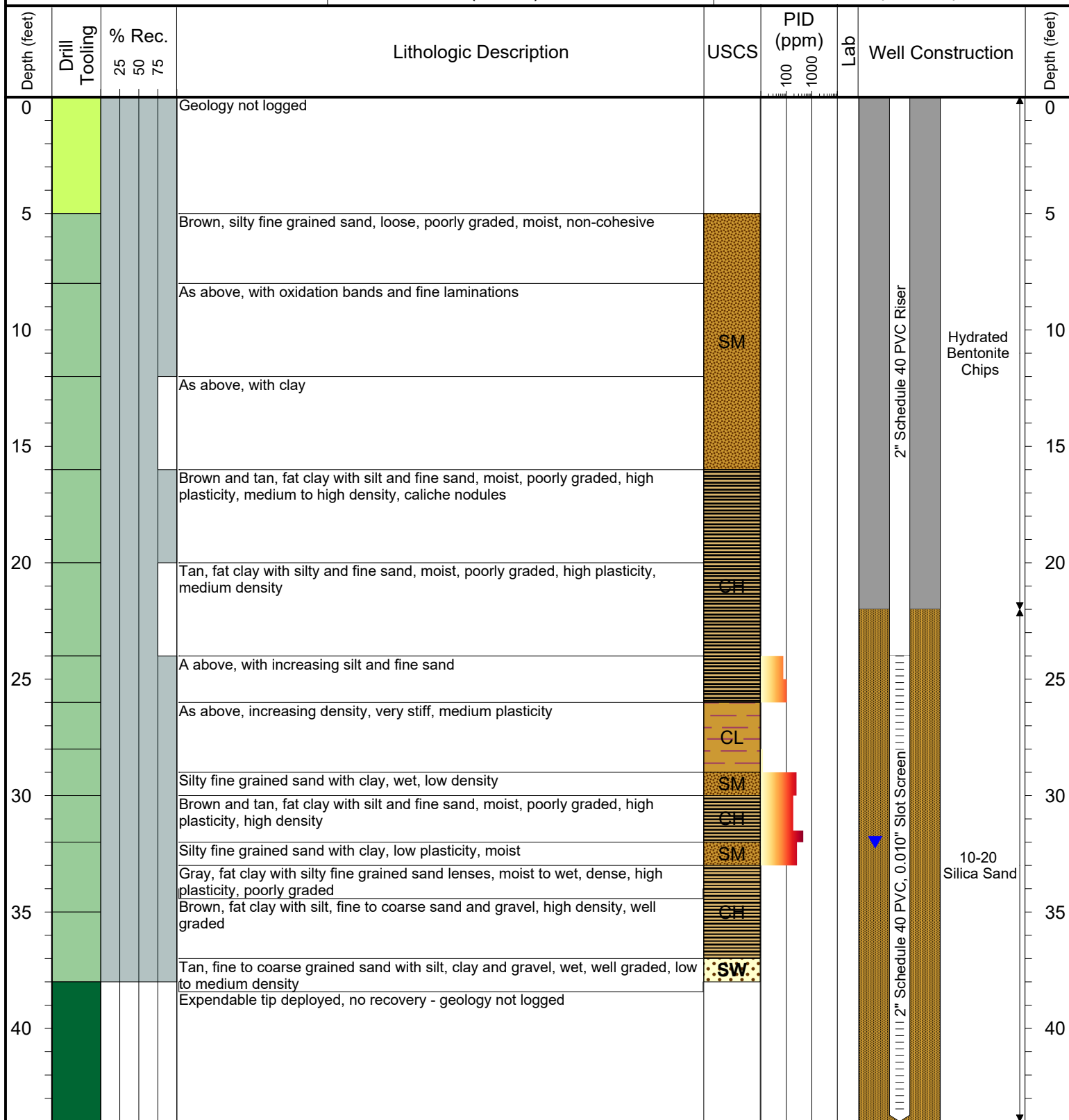
LOCATION: Stick up - 3.49'

NORTHING (CO STATE PLANE): 40.11742794

EASTING (CO STATE PLANE): -104.6691216

CASING ELEVATION (FT. AMSL): 4900.01

GROUND ELEVATION (FT. AMSL): 4896.52



Drilling / Sample Method:

Macro-Core
Hand Auger
Expendable Well Tip

Laboratory Sample Types:

Geotechnical Lab
Analytical Chemistry Lab
Geotechnical & Analytical Chemistry Lab



6899 Pecos Street, Unit C
Denver, Colorado 80221

CLIENT: Anadarko

LOGGED BY: Zach Mahaffey

PROJECT MANAGER: Mike Jahn P.G.

DRILLING CONTRACTOR: Tasman Geosciences

DRILLING EQUIPMENT: AMS Powerprobe 9300-SK

DRILL BIT SIZE (INCHES): 2.375

DATE STARTED - COMPLETED: 3/9/2017

TOTAL WELL DEPTH (FT. BGS): 44

DEPTH TO WATER (FT. BGS): 31

Ernie F Adamson GU-62N65W/21SWSW

BORING / WELL ID: BH08

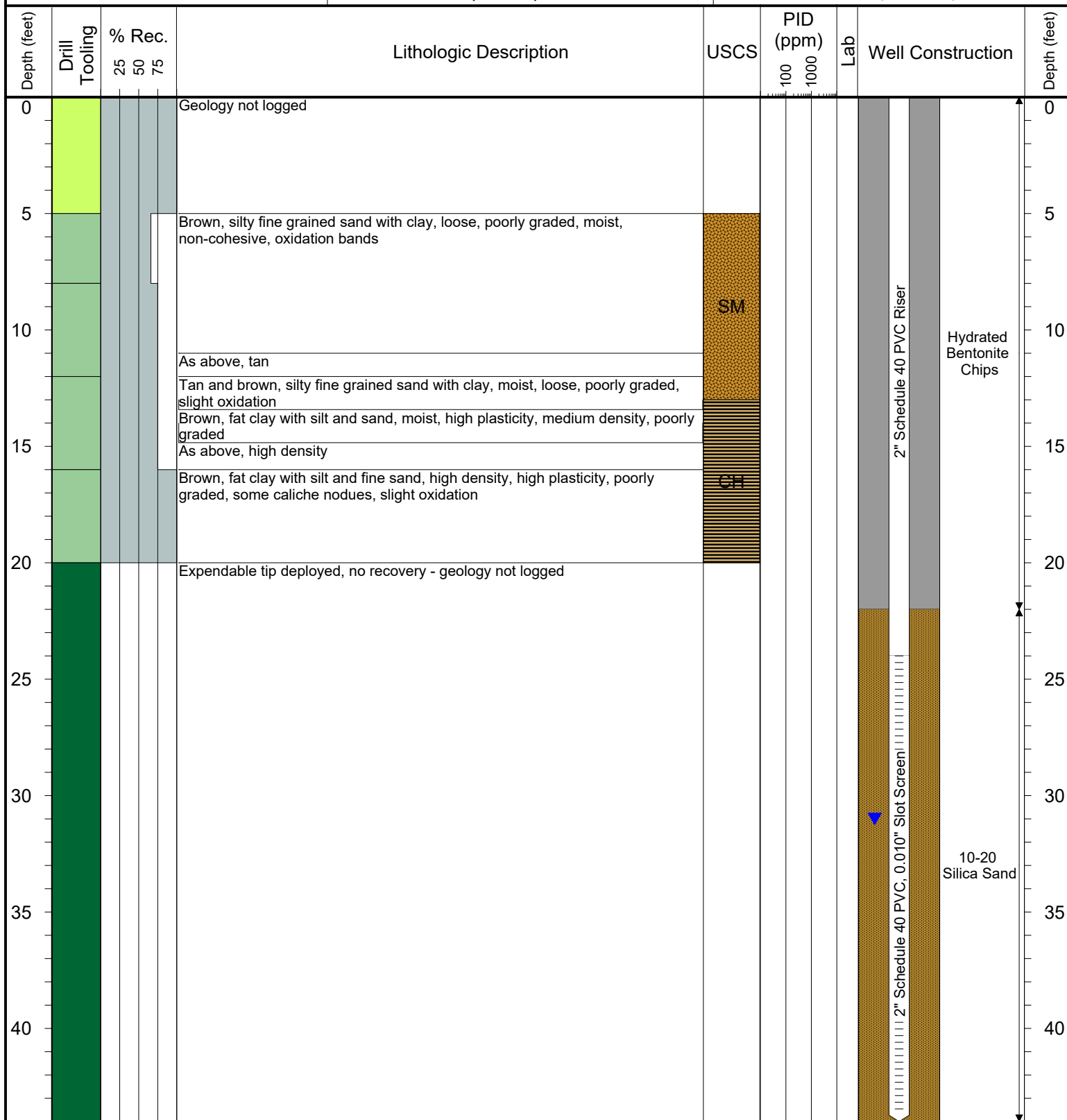
LOCATION: Stick up - 3.34'

NORTHING (CO STATE PLANE): 40.11774934

EASTING (CO STATE PLANE): -104.6691312

CASING ELEVATION (FT. AMSL): 4898.92

GROUND ELEVATION (FT. AMSL): 4895.58



Drilling / Sample Method:

Macro-Core
Hand Auger
Expendable Well Tip

Laboratory Sample Types:

Geotechnical Lab
Analytical Chemistry Lab
Geotechnical & Analytical Chemistry Lab



6899 Pecos Street, Unit C
Denver, Colorado 80221

CLIENT: Anadarko

LOGGED BY: Zach Mahaffey

PROJECT MANAGER: Mike Jahn P.G.

DRILLING CONTRACTOR: Tasman Geosciences

DRILLING EQUIPMENT: AMS Powerprobe 9300-SK

DRILL BIT SIZE (INCHES): 2.375

DATE STARTED - COMPLETED: 3/9/2017

TOTAL WELL DEPTH (FT. BGS): 44

DEPTH TO WATER (FT. BGS): 29.5

Ernie F Adamson GU-62N65W/21SWSW

BORING / WELL ID: BH09 (Destroyed)

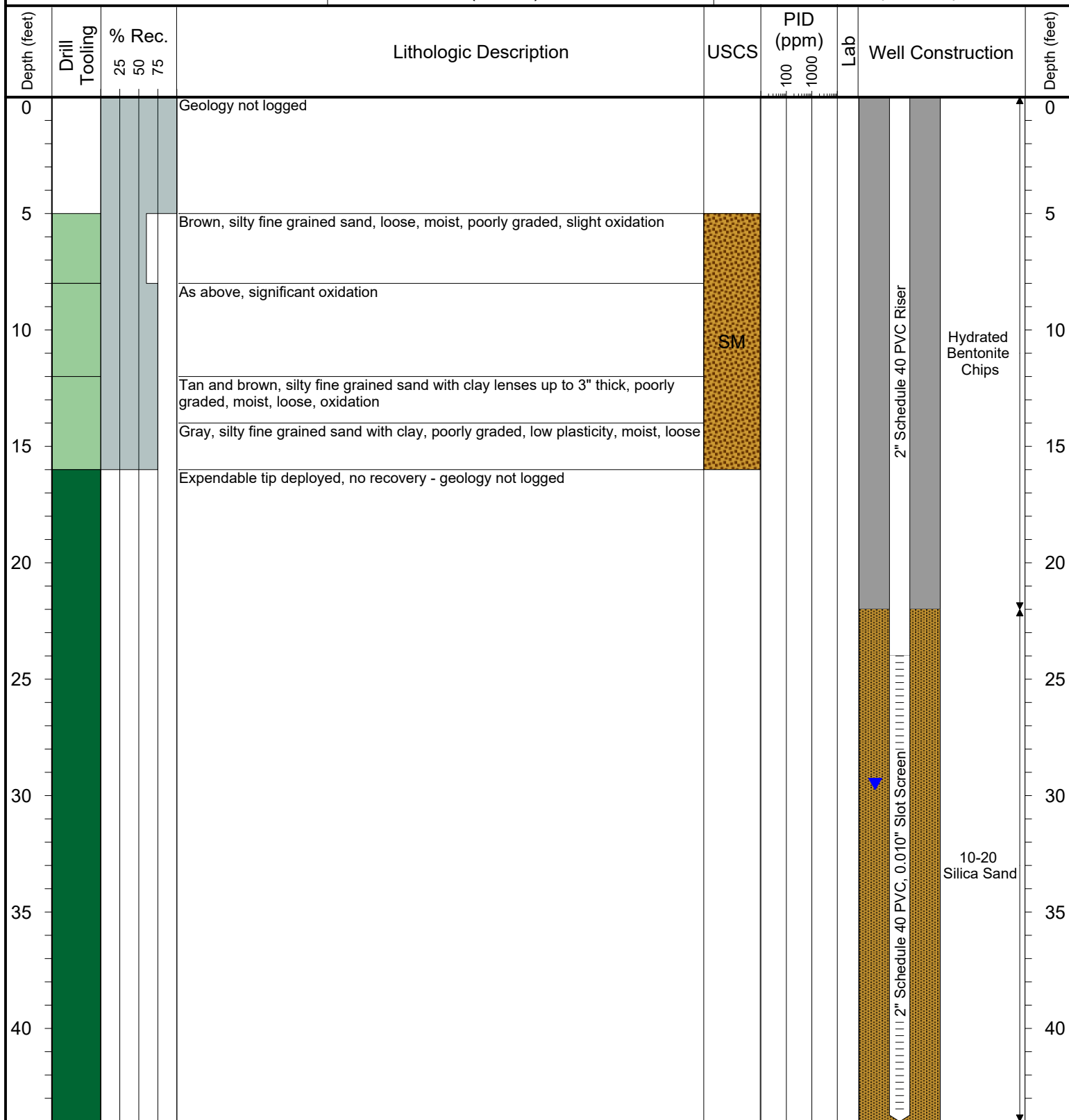
LOCATION: Flush Mount

NORTHING (CO STATE PLANE): 40.11771305

EASTING (CO STATE PLANE): -104.6689819

CASING ELEVATION (FT. AMSL): 4897.31

GROUND ELEVATION (FT. AMSL): 4897.38



Drilling / Sample Method:

- Macro-Core
- Hand Auger
- Expendable Well Tip

Laboratory Sample Types:

- Geotechnical Lab
- Analytical Chemistry Lab
- Geotechnical & Analytical Chemistry Lab



6899 Pecos Street, Unit C
Denver, Colorado 80221

CLIENT: Anadarko

LOGGED BY: Zach Mahaffey

PROJECT MANAGER: Mike Jahn P.G.

DRILLING CONTRACTOR: Tasman Geosciences

DRILLING EQUIPMENT: AMS Powerprobe 9300-SK

DRILL BIT SIZE (INCHES): 2.375

DATE STARTED - COMPLETED: 3/9/2017

TOTAL WELL DEPTH (FT. BGS): 44

DEPTH TO WATER (FT. BGS): 29

Ernie F Adamson GU-62N65W/21SWSW

BORING / WELL ID: BH10

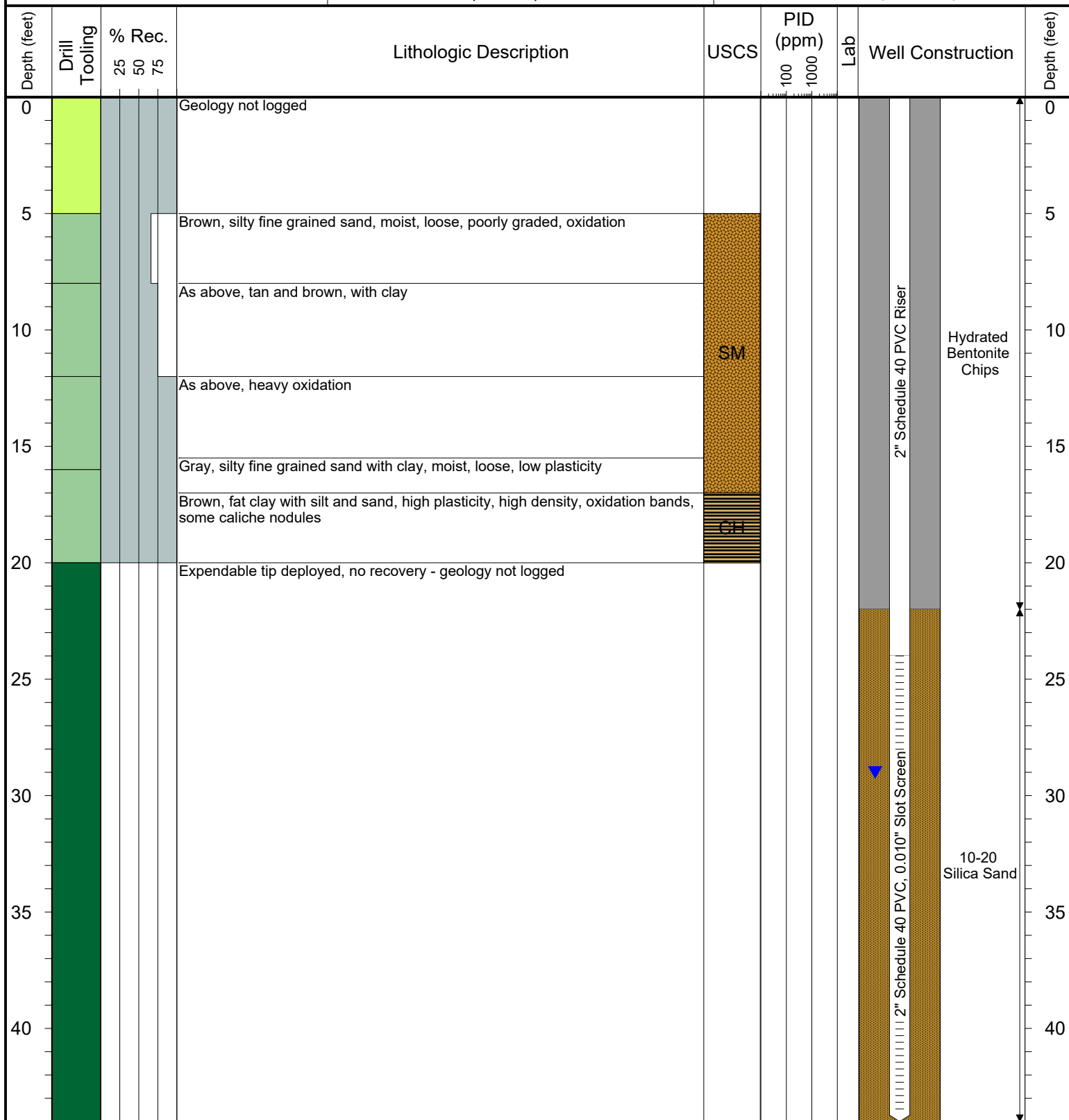
LOCATION: Flush Mount

NORTHING (CO STATE PLANE): 40.11744463

EASTING (CO STATE PLANE): -104.6689804

CASING ELEVATION (FT. AMSL): 4897.27

GROUND ELEVATION (FT. AMSL): 4897.56



Drilling / Sample Method:

Macro-Core

Hand Auger

Expendable Well Tip

Laboratory Sample Types:

Geotechnical Lab

Analytical Chemistry Lab

Geotechnical & Analytical Chemistry Lab