

GOLDEN EAGLE MINE 40-89 API# 05-071-06475 – TIMBER CREEK  
OGCC OPERATOR NUMBER 10672 – INSPECTION DATE: APRIL 19, 2018  
CORRECTIVE ACTIONS COMPLETED REGARDING COGCC FIR DOCUMENT # 680102764



PHOTO 1: FACING NORTHWEST TOWARD THE GOLDEN EAGLE MINE 40-89 PAD RECLAMATION. THE DIRT BERM DIVERSION WAS DOMINATED TO DIRECT THE RUN ON FROM THE ARROYO AWAY FROM THE RECLAMATION AREA. THE SITE WAS HYDRO-SEEDED USING AN APPROVED HILL RANCH SEED MIX TO PROMOTE THE ESTABLISHMENT OF VEGETATION.



GOLDEN EAGLE MINE 40-89 API# 05-071-06475 – TIMBER CREEK  
OGCC OPERATOR NUMBER 10672 – INSPECTION DATE: APRIL 19, 2018  
CORRECTIVE ACTIONS COMPLETED REGARDING COGCC FIR DOCUMENT # 680102764

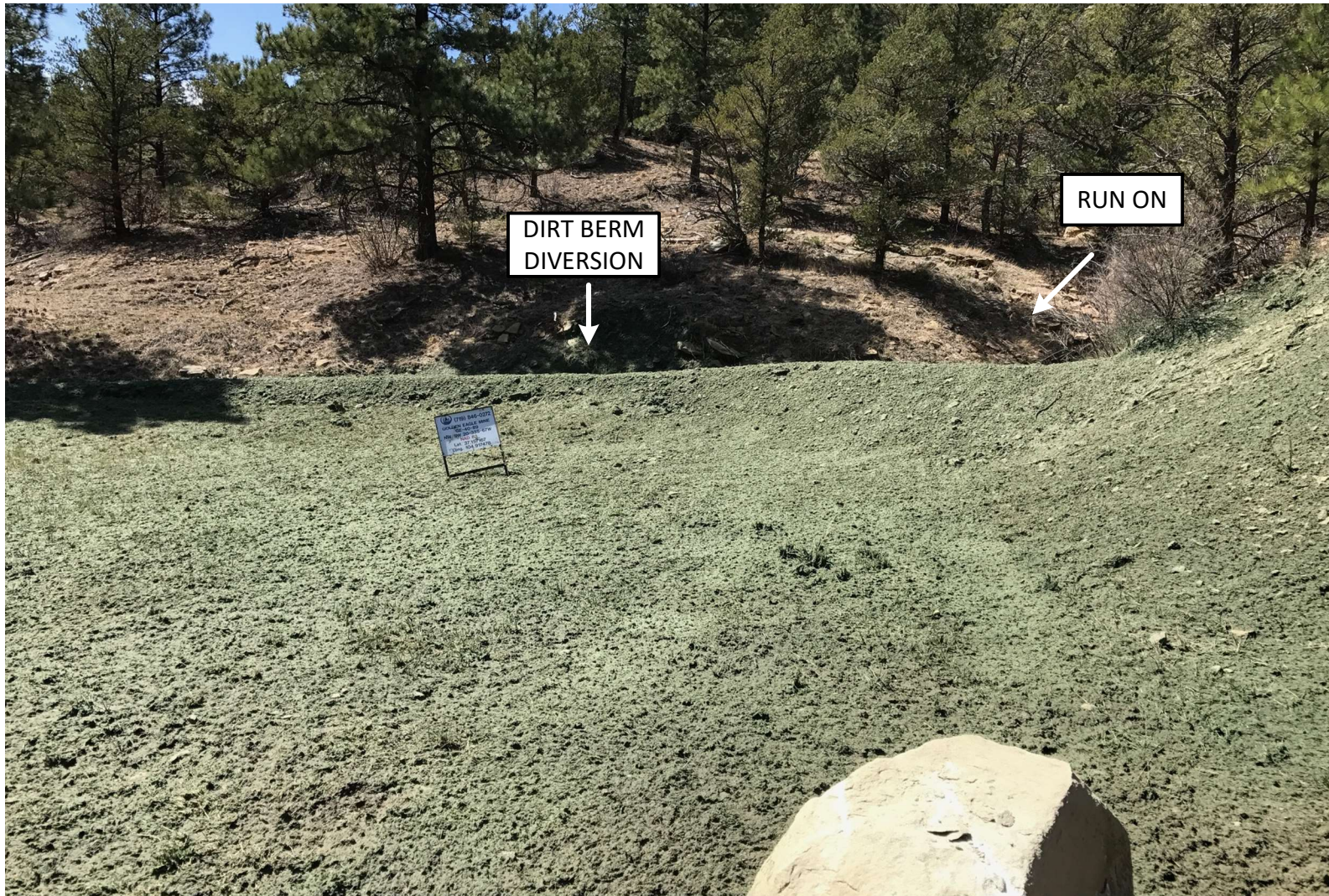


PHOTO 2: FACING WEST TOWARD THE GOLDEN EAGLE MINE 40-89 PAD RECLAMATION. RUN ON IS DIVERTED ON THE WEST SIDE OF THE RECLAMATION.



GOLDEN EAGLE MINE 40-89 API# 05-071-06475 – TIMBER CREEK  
OGCC OPERATOR NUMBER 10672 – INSPECTION DATE: APRIL 19, 2018  
CORRECTIVE ACTIONS COMPLETED REGARDING COGCC FIR DOCUMENT # 680102764



PHOTO 3: FACING SOUTHWEST TOWARD THE GOLDEN EAGLE MINE 40-89 PAD RECLAMATION. THE RUN ON FROM THE SECOND ARROYO IS DIVERTED AROUND THE PAD AND INTO THE EXISTING BAR DITCH ON THE LEASE ROAD. THE SITE WAS HYDRO-SEEDED USING AN APPROVED HILL RANCH SEED MIX TO PROMOTE THE ESTABLISHMENT OF VEGETATION.