

GOLDEN EAGLE MINE 28-12 (SD-1) API# 05-071-06542 – TIMBER CREEK  
OGCC OPERATOR NUMBER 10672 – INSPECTION DATE: APRIL 19, 2018  
CORRECTIVE ACTIONS COMPLETED REGARDING COGCC FIR DOCUMENT # 680102760

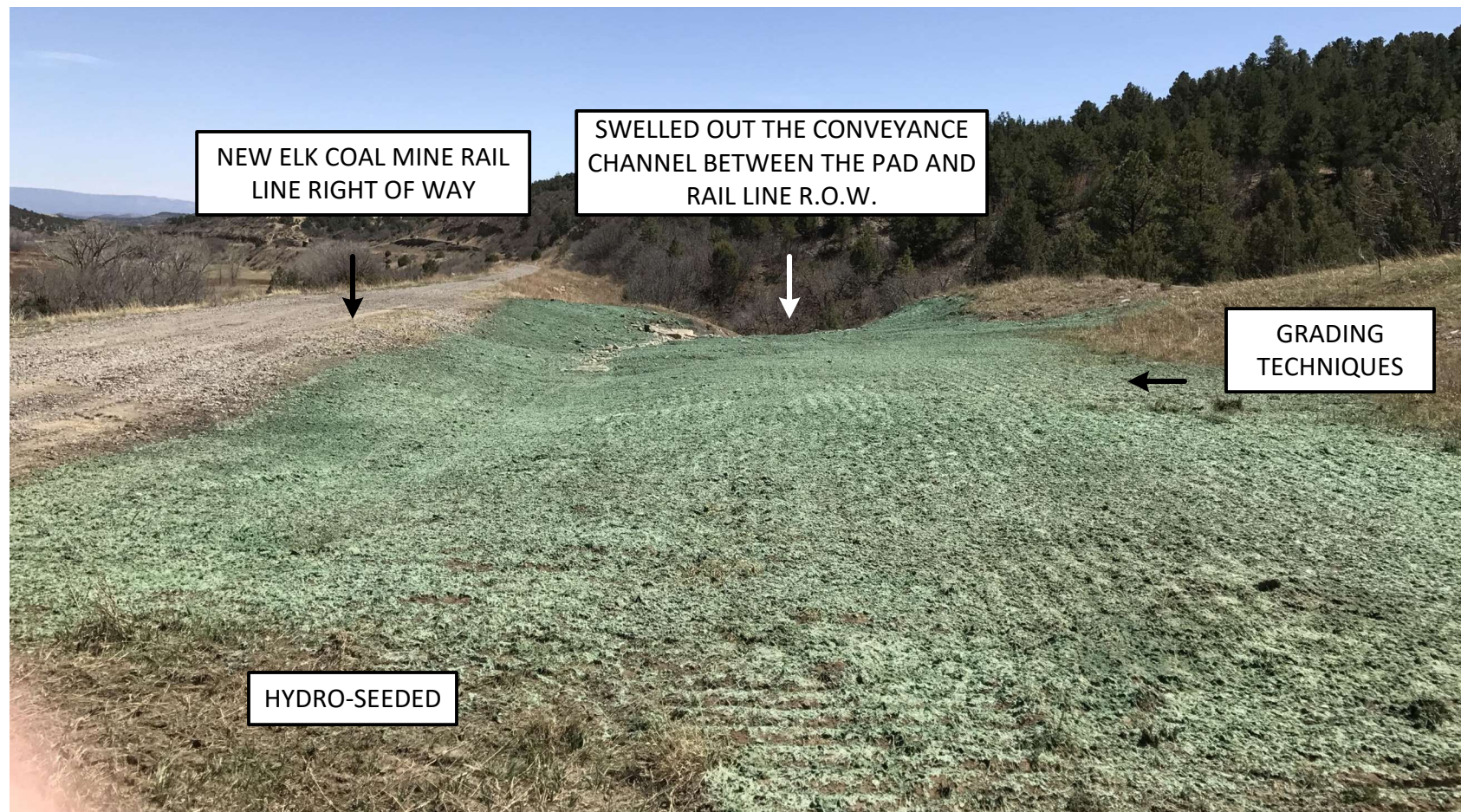


PHOTO 1: FACING EAST ACROSS THE GOLDEN EAGLE MINE 28-12 (SD-1) PAD RECLAMATION. THE LOCATION SIGN, PIPELINE RISERS, ROOF ANCHORS, CONCRETE CHUNKS AND REBAR WERE ALL REMOVED FROM LOCATION. THE PAD WAS RECONTOURED TO BETTER MATCH THE SURROUNDING TERRAIN. GRADING TECHNIQUES WERE INSTALLED ON THE CONTOUR. THE EARTH DISTURBANCE WAS HYDRO-SEEDED WITH AN APPROVED COLORADO PARKS AND WILDLIFE (CPW) SEED MIX TO PROMOTE THE ESTABLISHMENT OF VEGETATION.



GOLDEN EAGLE MINE 28-12 (SD-1) API# 05-071-06542 – TIMBER CREEK  
OGCC OPERATOR NUMBER 10672 – INSPECTION DATE: APRIL 19, 2018  
CORRECTIVE ACTIONS COMPLETED REGARDING COGCC FIR DOCUMENT # 680102760

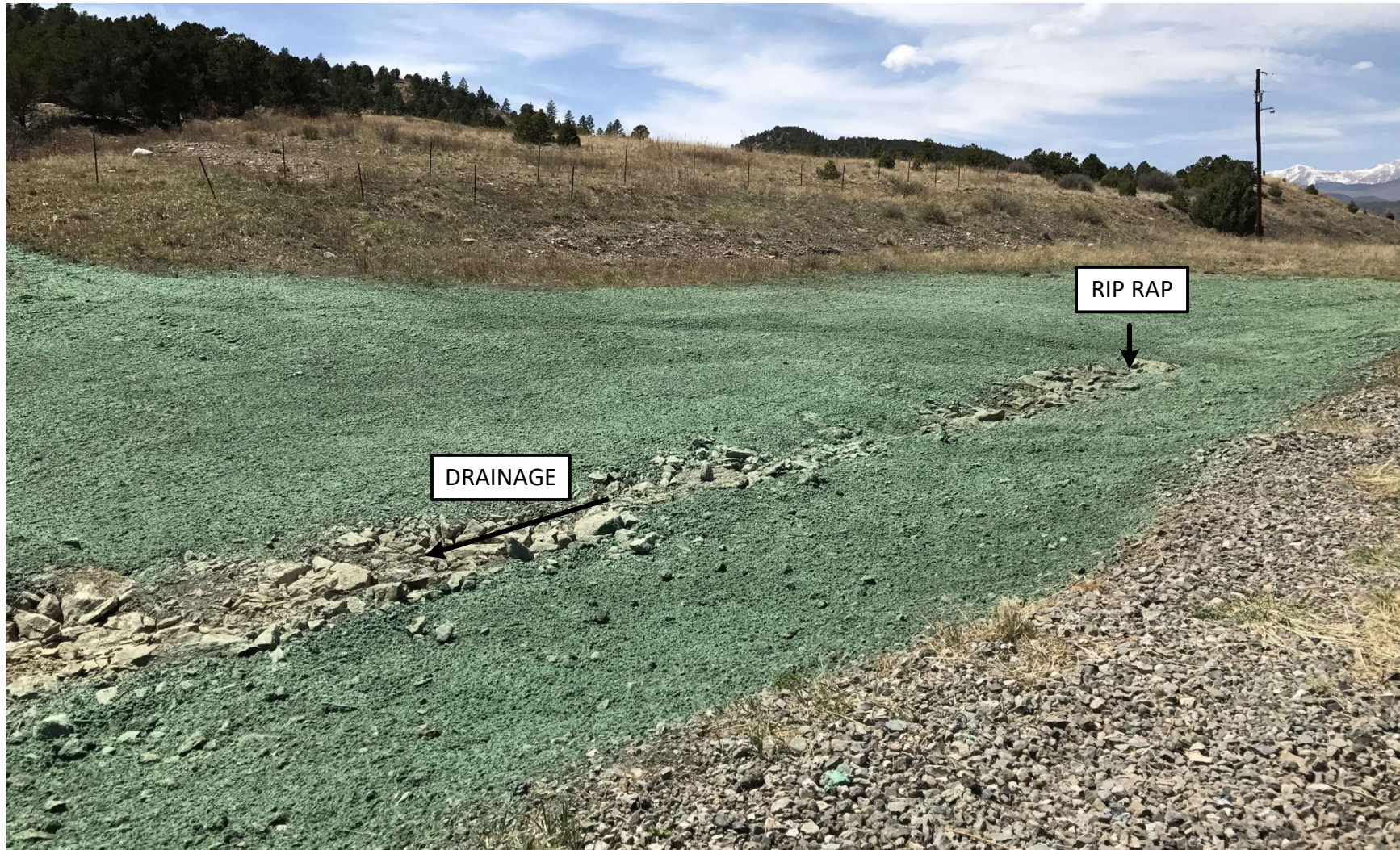


PHOTO 2: FACING SOUTHWEST ACROSS THE GOLDEN EAGLE MINE 28-12 (SD-1) PAD RECLAMATION. SWELLED OUT THE ORIGINAL DRAINAGE DITCH AND INSTALLED RIP RAP FOR SOIL STABILIZATION.



GOLDEN EAGLE MINE 28-12 (SD-1) API# 05-071-06542 – TIMBER CREEK  
OGCC OPERATOR NUMBER 10672 – INSPECTION DATE: APRIL 19, 2018  
CORRECTIVE ACTIONS COMPLETED REGARDING COGCC FIR DOCUMENT # 680102760

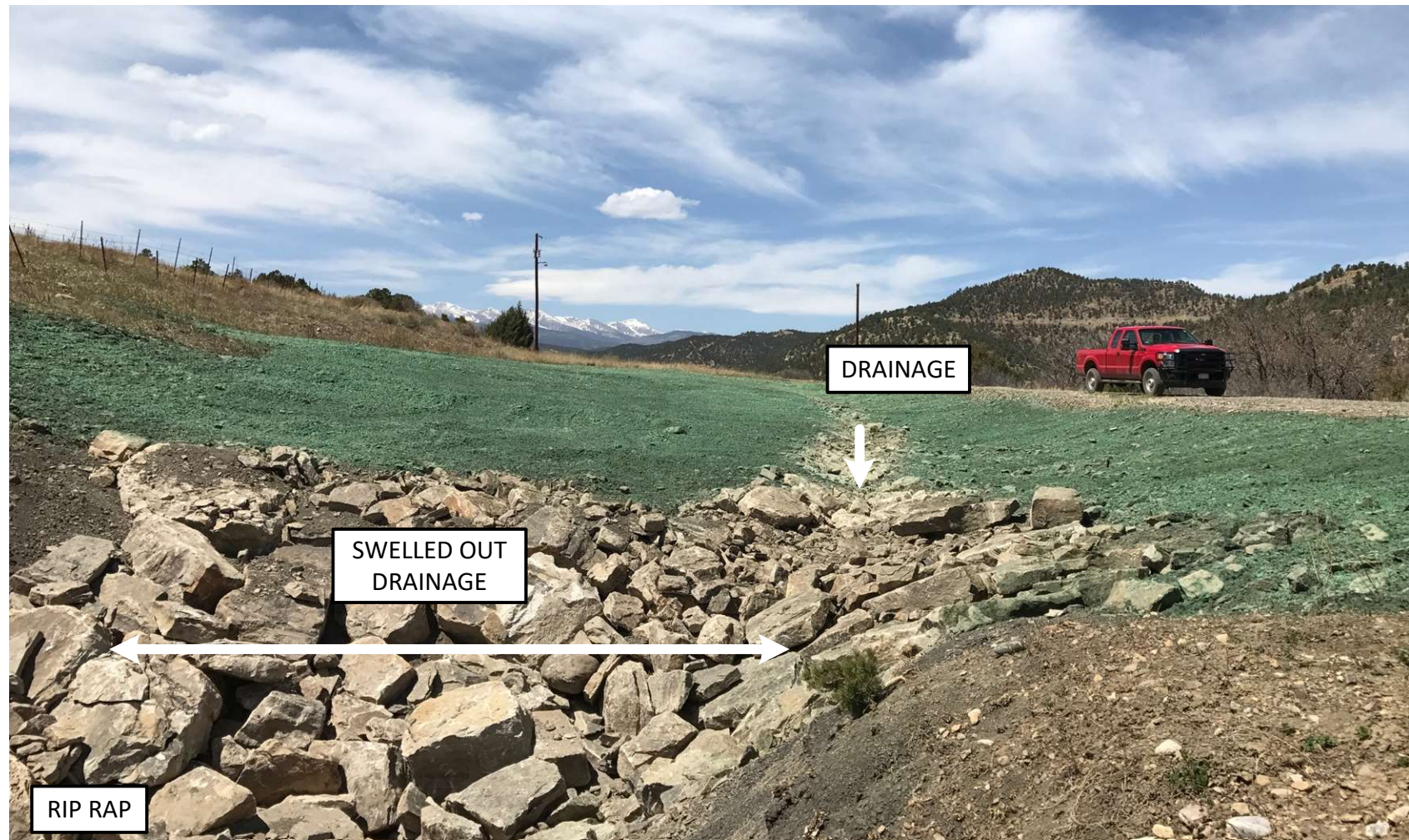


PHOTO 3: FACING WEST ACROSS THE GOLDEN EAGLE MINE 28-12 (SD-1) PAD RECLAMATION. SWELLED OUT THE ORIGINAL DRAINAGE DITCH BETWEEN THE WELL PAD RECLAMATION AND THE RAIL LINE R.O.W. INSTALLED RIP RAP IN THE STORMWATER CONVEYANCE FOR SOIL STABILIZATION.