

GOLDEN EAGLE MINE E-1 API # 05-071-06435 CORRECTIVE ACTIONS COMPLETED REGARDING COGCC FIR DOCUMENT # 680102752
GOLDEN EAGLE MINE E-2 API# 05-071-06436 CORRECTIVE ACTIONS COMPLETED REGARDING COGCC FIR DOCUMENT # 680102777
TIMBER CREEK - OGCC OPERATOR NUMBER 10672 – INSPECTION DATE: APRIL 05, 2018

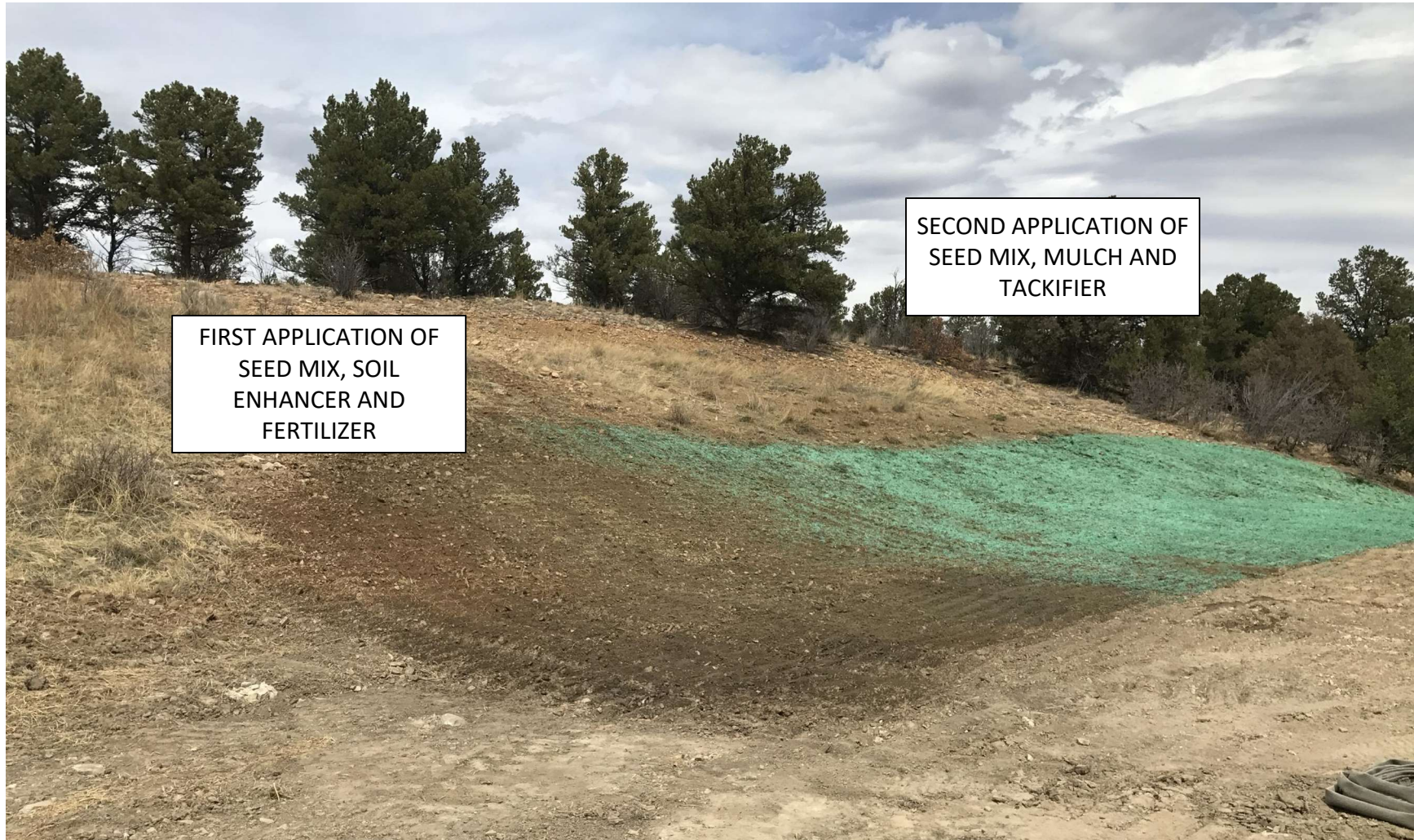


PHOTO 1: FACING THE NORTH CUT SLOPE OF WELL PAD GOLDEN EAGLE 28-13 API # 071-06435. ACCESS TO THE WEST PORTION OF THE GOLDEN EAGLE MINE E-1 AND E-2 ACCESS ROAD RECLAMATION WAS GAINED FROM THE GOLDEN EAGLE 28-13 WELL PAD. THIS DISTURBANCE WAS RECONTOURED AND RECLAIMED. THE EARTH DISTURBANCE WAS HYDRO-SEEDED WITH THE APPROVED COLORADO PARKS AND WILDLIFE (CPW) SEED MIX TO PROMOTE THE ESTABLISHMENT OF VEGETATION.

GOLDEN EAGLE MINE E-1 API # 05-071-06435 CORRECTIVE ACTIONS COMPLETED REGARDING COGCC FIR DOCUMENT # 680102752
GOLDEN EAGLE MINE E-2 API# 05-071-06436 CORRECTIVE ACTIONS COMPLETED REGARDING COGCC FIR DOCUMENT # 680102777
TIMBER CREEK - OGCC OPERATOR NUMBER 10672 – INSPECTION DATE: APRIL 05, 2018



PHOTO 2 : FACING THE NORTH CUT SLOPE OF WELL PAD GOLDEN EAGLE 28-13 API # 071-06435 WERE THE CUT MEETS THE FILL SLOPE. ACCESS TO THE WEST PORTION OF THE GOLDEN EAGLE MINE E-1 AND E-2 ACCESS ROAD RECLAMATION WAS GAINED FROM THE GOLDEN EAGLE 28-13 WELL PAD. THIS DISTURBANCE WAS RECONTOURED AND RECLAIMED. THE EARTH DISTURBANCE WAS HYDRO-SEEDING WITH AN APPROVED COLORADO PARKS AND WILDLIFE (CPW) SEED MIX TO PROMOTE THE ESTABLISHMENT OF VEGETATION.

GOLDEN EAGLE MINE E-1 API # 05-071-06435 CORRECTIVE ACTIONS COMPLETED REGARDING COGCC FIR DOCUMENT # 680102752
GOLDEN EAGLE MINE E-2 API# 05-071-06436 CORRECTIVE ACTIONS COMPLETED REGARDING COGCC FIR DOCUMENT # 680102777
TIMBER CREEK - OGCC OPERATOR NUMBER 10672 – INSPECTION DATE: APRIL 05, 2018



PHOTO 3 : FACING EAST TOWARD WELL PAD FILL SLOPE OF GOLDEN EAGLE 28-13 API # 071-06435. ACCESS TO THE WEST PORTION OF THE GOLDEN EAGLE MINE E-1 AND E-2 ACCESS ROAD RECLAMATION WAS GAINED FROM THE GOLDEN EAGLE 28-13 WELL PAD. THIS DISTURBANCE WAS RECONTOURED AND RECLAIMED. THE EARTH DISTURBANCE WAS HYDRO-SEEDED WITH AN APPROVED COLORADO PARKS AND WILDLIFE (CPW) SEED MIX TO PROMOTE THE ESTABLISHMENT OF VEGETATION.

GOLDEN EAGLE MINE E-1 API # 05-071-06435 CORRECTIVE ACTIONS COMPLETED REGARDING COGCC FIR DOCUMENT # 680102752
GOLDEN EAGLE MINE E-2 API# 05-071-06436 CORRECTIVE ACTIONS COMPLETED REGARDING COGCC FIR DOCUMENT # 680102777
TIMBER CREEK - OGCC OPERATOR NUMBER 10672 – INSPECTION DATE: APRIL 05, 2018



PHOTO 4 : FACING NORTHEAST TOWARD THE WEST PORTION OF THE GOLDEN EAGLE MINE E-1 AND E-2 ACCESS ROAD RECLAMATION. THE ACCESS ROAD WAS RECONTOURED TO MATCH THE SURROUNDING TERRAIN. GRADING TECHNIQUES WERE INSTALLED ON THE CONTOUR. THE EARTH DISTURBANCE WAS HYDRO-SEEDED WITH AN APPROVED COLORADO PARKS AND WILDLIFE (CPW) SEED MIX TO PROMOTE THE ESTABLISHMENT OF VEGETATION.

GOLDEN EAGLE MINE E-1 API # 05-071-06435 CORRECTIVE ACTIONS COMPLETED REGARDING COGCC FIR DOCUMENT # 680102752
GOLDEN EAGLE MINE E-2 API# 05-071-06436 CORRECTIVE ACTIONS COMPLETED REGARDING COGCC FIR DOCUMENT # 680102777
TIMBER CREEK - OGCC OPERATOR NUMBER 10672 – INSPECTION DATE: APRIL 05, 2018



PHOTO 5 : FACING NORTH TOWARD THE WEST PORTION OF THE GOLDEN EAGLE MINE E-1 AND E-2 ACCESS ROAD RECLAMATION. THE ACCESS ROAD WAS RECONTOURED TO MATCH THE SURROUNDING TERRAIN. GRADING TECHNIQUES WERE INSTALLED ON THE CONTOUR. THE EARTH DISTURBANCE WAS HYDRO-SEEDED WITH AN APPROVED COLORADO PARKS AND WILDLIFE (CPW) SEED MIX TO PROMOTE THE ESTABLISHMENT OF VEGETATION.

GOLDEN EAGLE MINE E-1 API # 05-071-06435 CORRECTIVE ACTIONS COMPLETED REGARDING COGCC FIR DOCUMENT # 680102752
GOLDEN EAGLE MINE E-2 API# 05-071-06436 CORRECTIVE ACTIONS COMPLETED REGARDING COGCC FIR DOCUMENT # 680102777
TIMBER CREEK - OGCC OPERATOR NUMBER 10672 – INSPECTION DATE: APRIL 05, 2018



PHOTO 6 : FACING NORTH TOWARD THE WEST PORTION OF THE GOLDEN EAGLE MINE E-1 AND E-2 ACCESS ROAD RECLAMATION. THE ACCESS ROAD WAS RECONTOURED TO MATCH THE SOUROUNDING TERRAIN. GRADING TECHNIQUES WERE INSTALLED ON THE CONTOUR. THE EARTH DISTURBANCE WAS HYDRO-SEEDED WITH AN APPROVED COLORADO PARKS AND WILDLIFE (CPW) SEED MIX TO PROMOTE THE ESTABLISHMENT OF VEGETATION.

GOLDEN EAGLE MINE E-1 API # 05-071-06435 CORRECTIVE ACTIONS COMPLETED REGARDING COGCC FIR DOCUMENT # 680102752
GOLDEN EAGLE MINE E-2 API# 05-071-06436 CORRECTIVE ACTIONS COMPLETED REGARDING COGCC FIR DOCUMENT # 680102777
TIMBER CREEK - OGCC OPERATOR NUMBER 10672 – INSPECTION DATE: APRIL 05, 2018



PHOTO 7: FACING SOUTH TOWARD THE WEST PORTION OF THE GOLDEN EAGLE MINE E-1 AND E-2 ACCESS ROAD RECLAMATION. THE ACCESS ROAD WAS RECONTOURED TO MATCH THE SURROUNDING TERRAIN. GRADING TECHNIQUES WERE INSTALLED ON THE CONTOUR. THE EARTH DISTURBANCE WAS HYDRO-SEEDING WITH AN APPROVED COLORADO PARKS AND WILDLIFE (CPW) SEED MIX TO PROMOTE THE ESTABLISHMENT OF VEGETATION.

GOLDEN EAGLE MINE E-1 API # 05-071-06435 CORRECTIVE ACTIONS COMPLETED REGARDING COGCC FIR DOCUMENT # 680102752
GOLDEN EAGLE MINE E-2 API# 05-071-06436 CORRECTIVE ACTIONS COMPLETED REGARDING COGCC FIR DOCUMENT # 680102777
TIMBER CREEK - OGCC OPERATOR NUMBER 10672 – INSPECTION DATE: APRIL 05, 2018



PHOTO 8: FACING SOUTH TOWARD THE WEST PORTION OF THE GOLDEN EAGLE MINE E-1 AND E-2 ACCESS ROAD RECLAMATION. THE ACCESS ROAD WAS RECONTOURED TO MATCH THE SURROUNDING TERRAIN. GRADING TECHNIQUES WERE INSTALLED ON THE CONTOUR. THE EARTH DISTURBANCE WAS HYDRO-SEEDED WITH AN APPROVED COLORADO PARKS AND WILDLIFE (CPW) SEED MIX TO PROMOTE THE ESTABLISHMENT OF VEGETATION.

GOLDEN EAGLE MINE E-1 API # 05-071-06435 CORRECTIVE ACTIONS COMPLETED REGARDING COGCC FIR DOCUMENT # 680102752
GOLDEN EAGLE MINE E-2 API# 05-071-06436 CORRECTIVE ACTIONS COMPLETED REGARDING COGCC FIR DOCUMENT # 680102777
TIMBER CREEK - OGCC OPERATOR NUMBER 10672 – INSPECTION DATE: APRIL 10, 2018



PHOTO 9: FACING SOUTHWEST TOWARD THE WELL PAD AND EAST PORTION OF THE GOLDEN EAGLE MINE E-1 AND E-2 ACCESS ROAD RECLAMATION. THE ACCESS ROAD WAS RECONTOURED TO MATCH THE SURROUNDING TERRAIN. GRADING TECHNIQUES WERE INSTALLED ON THE CONTOUR. ARMOR WAS INSTALLED TO RECEIVE RUN ON AND CONTROL EROSION. THE EARTH DISTURBANCE WAS HYDRO-SEEDED WITH AN APPROVED COLORADO PARKS AND WILDLIFE (CPW) SEED MIX TO PROMOTE THE ESTABLISHMENT OF VEGETATION.

GOLDEN EAGLE MINE E-1 API # 05-071-06435 CORRECTIVE ACTIONS COMPLETED REGARDING COGCC FIR DOCUMENT # 680102752
GOLDEN EAGLE MINE E-2 API# 05-071-06436 CORRECTIVE ACTIONS COMPLETED REGARDING COGCC FIR DOCUMENT # 680102777
TIMBER CREEK - OGCC OPERATOR NUMBER 10672 – INSPECTION DATE: APRIL 10, 2018



PHOTO 10: FACING THE CREEK BOTTOM OF THE GOLDEN EAGLE MINE E-1 AND E-2 ACCESS ROAD RECLAMATION. ALL PIPING, RISERS AND VALVES HAVE BEEN REMOVED. THE ACCESS ROAD WAS RECONTOURED TO MATCH THE SURROUNDING TERRAIN. GRADING TECHNIQUES WERE INSTALLED ON THE CONTOUR. ARMOR WAS INSTALLED IN THE CREEK BOTTOM FOR PERMANENT STABILIZATION. THE EARTH DISTURBANCE WAS HYDRO-SEEDED WITH AN APPROVED COLORADO PARKS AND WILDLIFE (CPW) SEED MIX TO PROMOTE THE ESTABLISHMENT OF VEGETATION.

GOLDEN EAGLE MINE E-1 API # 05-071-06435 CORRECTIVE ACTIONS COMPLETED REGARDING COGCC FIR DOCUMENT # 680102752
GOLDEN EAGLE MINE E-2 API# 05-071-06436 CORRECTIVE ACTIONS COMPLETED REGARDING COGCC FIR DOCUMENT # 680102777
TIMBER CREEK - OGCC OPERATOR NUMBER 10672 – INSPECTION DATE: APRIL 19, 2018

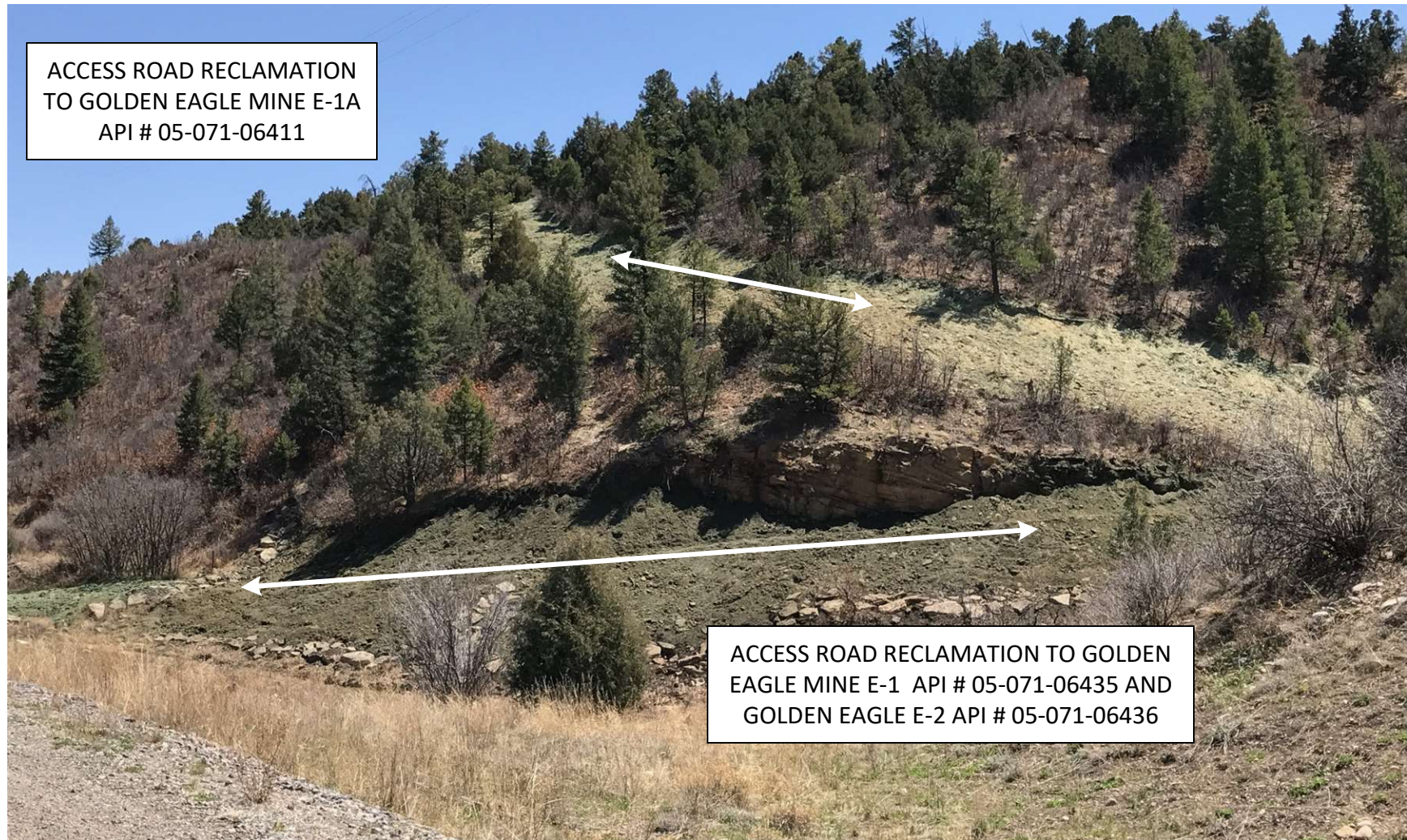


PHOTO 11: FACING SOUTHEAST AT THE GOLDEN EAGLE MINE E-1, E-2 AND E-1A ACCESS ROAD RECLAMATION FROM THE RAIL ROAD ROW. THE ACCESS ROAD WAS RECONTOURED TO MATCH THE SURROUNDING TERRAIN. GRADING TECHNIQUES WERE INSTALLED ON THE CONTOUR. ARMOR WAS INSTALLED IN AREAS OF CONCENTRATED FLOW FOR EROSION CONTROL AND PERMANENT STABILIZATION. THE EARTH DISTURBANCE WAS HYDRO-SEEDED WITH AN APPROVED COLORADO PARKS AND WILDLIFE (CPW) SEED MIX TO PROMOTE THE ESTABLISHMENT OF VEGETATION.

GOLDEN EAGLE MINE E-1 API # 05-071-06435 CORRECTIVE ACTIONS COMPLETED REGARDING COGCC FIR DOCUMENT # 680102752
GOLDEN EAGLE MINE E-2 API# 05-071-06436 CORRECTIVE ACTIONS COMPLETED REGARDING COGCC FIR DOCUMENT # 680102777
TIMBER CREEK - OGCC OPERATOR NUMBER 10672 – INSPECTION DATE: APRIL 19, 2018

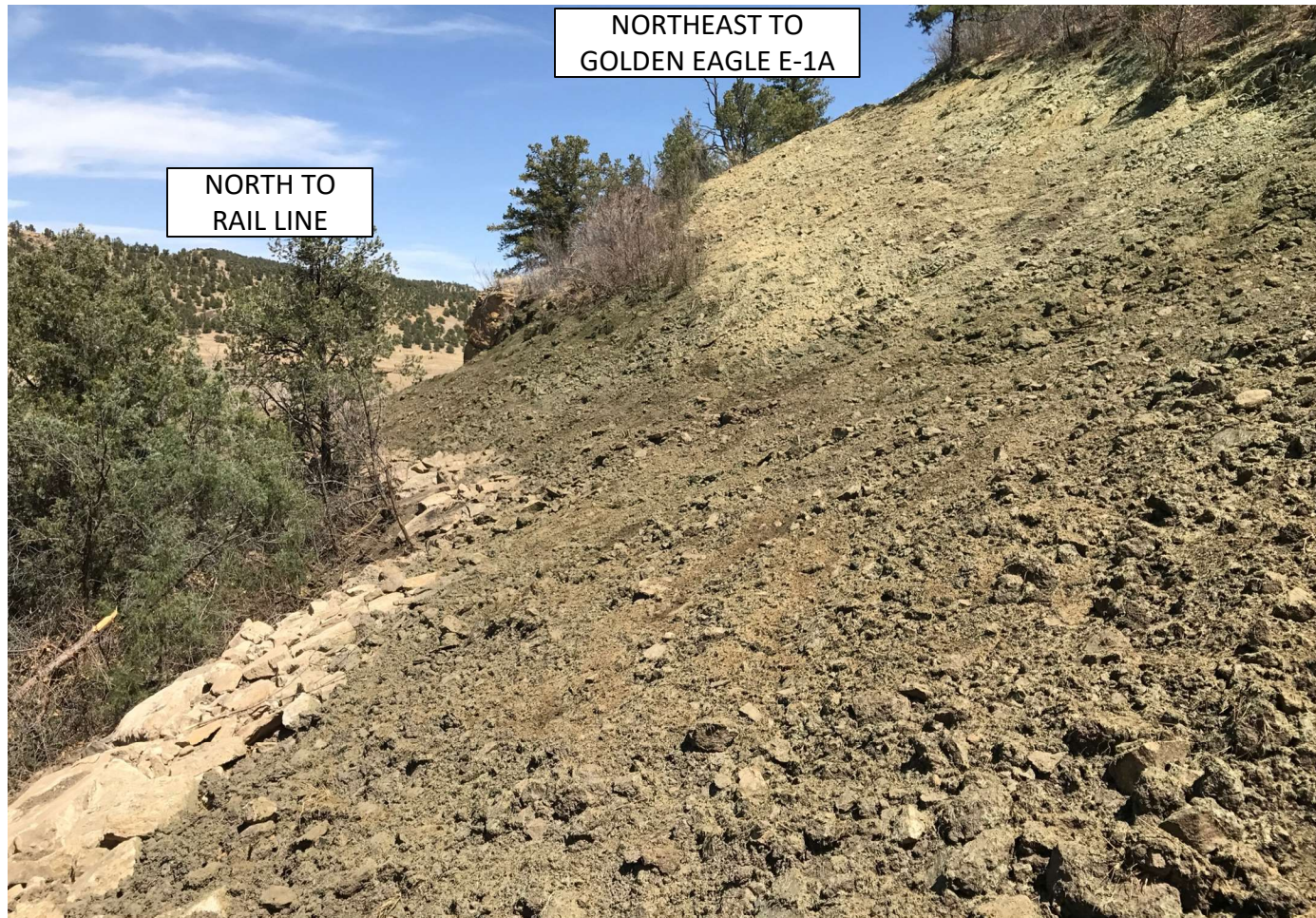


PHOTO 12: FACING NORTH TOWARD INTERSECTION OF GOLDEN EAGLE MINE E-1, E-2 AND E-1A ACCESS ROAD RECLAMATION. THE ACCESS ROAD WAS RECONTOURED TO MATCH THE SURROUNDING TERRAIN. GRADING TECHNIQUES WERE INSTALLED ON THE CONTOUR. ARMOR WAS INSTALLED AT THE TOE OF THE FILL SLOPE FOR PERMANENT STABILIZATION. THE EARTH DISTURBANCE WAS HYDRO-SEEDING WITH AN APPROVED COLORADO PARKS AND WILDLIFE (CPW) SEED MIX TO PROMOTE THE ESTABLISHMENT OF VEGETATION.