

MATCH LINE
SEE SHEET 2

T12N, R65W

N 89°29'59" W 5218.22' (M)

WELL BORE CONTINUES
INTO SECTION 20

NW. COR.
SEC. 29, T12N, R65W
FOUND 2 1/2" ALUM. CAP
P.L.S. NO. 35597

NE. COR.
SEC. 29, T12N, R65W
FOUND 2 1/2" ALUM. CAP
P.L.S. NO. 35597

SURFACE LOCATION: NAD 83
GROUND ELEVATION= 5995.0'
LATITUDE= 40.971779°
LONGITUDE= -104.679640°
LATITUDE= 40°58'18.403"
LONGITUDE= -104°40'46.703"
HEEL LOCATION: NAD 83
LATITUDE= 40.972470°
LONGITUDE= -104.680558°
LATITUDE= 40°58'20.894"
LONGITUDE= -104°40'50.009"
BOTTOM HOLE LOCATION: NAD 83
LATITUDE= 40.999234°
LONGITUDE= -104.680569°
LATITUDE= 40°59'57.243"
LONGITUDE= -104°40'50.050"

N 00°32'51" W 9752' GRID
N 00°01'01" W TRUE
N 08°13'51" W MAGNETIC

29

N 89°53'31" W
2619.42' (C)

N 89°53'31" W
2619.42' (C)

N 00°22'18" E 5369.80' (M)

N 00°04'24" W 5298.33' (M)

SURFACE LOCATION: NAD 27
LATITUDE= 40.971796°
LONGITUDE= -104.679119°
LATITUDE= 40°58'18.467"
LONGITUDE= -104°40'44.827"
HEEL LOCATION: NAD 27
LATITUDE= 40.972488°
LONGITUDE= -104.680037°
LATITUDE= 40°58'20.958"
LONGITUDE= -104°40'48.134"
BOTTOM HOLE LOCATION: NAD 27
LATITUDE= 40.999252°
LONGITUDE= -104.680048°
LATITUDE= 40°59'57.306"
LONGITUDE= -104°40'48.174"

RESOLUTION FED
12-65-29-20-6NH
SURFACE LOCATION

HEEL LOCATION
1190'
935'
601'
350'

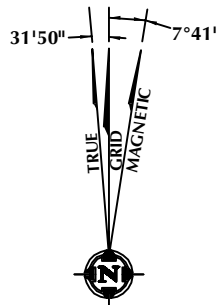
SW. COR.
SEC. 29, T12N, R65W
FOUND ALUM. CAP
L.S. NO. 38305

SE. COR.
SEC. 29, T12N, R65W
FOUND ALUM. CAP
L.S. NO. 38305

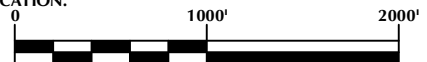
S 89°43'08" W 5259.69' (M)

NOTES:

- ▲ INDICATES SECTION CORNER
- INDICATES CALCULATED CORNER
- ELEVATION BASED ON NAVD88 (GEOID09)
- BASIS OF BEARING DERIVED FROM COLORADO COORDINATE SYSTEM OF 1983 NORTH ZONE.
- ALL MEASURED DISTANCES ARE GRID.
COMBINED SCALE FACTOR: .99975846 CALCULATED FROM THE SE. CORNER OF SECTION 20, T12N, R65W
- OPERATOR: CHRIS KASCHMITTER / PDOP = 1.2
- SEE ADDENDUM TO WELL LOCATION CERTIFICATE FOR EXISTING IMPROVEMENTS WITHIN 500' OF THE WELL PAD.
- WELL FOOTAGES ARE MEASURED AT RIGHT ANGLES TO THE SECTION LINES.
- THE BOTTOM OF HOLE BEARS N00°32'51"W, 9752' FROM THE HEEL LOCATION.



NOTE:
MAGNETIC NORTH IS CURRENT AS OF 6/28/2017.
MAGNETIC NORTH CHANGES WEST 0°06' PER YEAR.



SCALE: 1" = 1000'

CERTIFICATE OF SURVEYOR:

THIS IS TO CERTIFY THAT THE ABOVE PLAT WAS PREPARED FROM FIELD NOTES OF ACTUAL SURVEY MADE BY ME OR UNDER MY SUPERVISION AND TO THE SAME BE TRUE AND CORRECT TO THE BEST OF MY KNOWLEDGE AND BELIEF. THIS CERTIFICATE DOES NOT REPRESENT A LAND SURVEY PLAT OR IMPROVEMENT SURVEY PLAT AS DEFINED BY C.R.S. 19-51-102 AND CANNOT BE RELIED UPON TO DETERMINE OWNERSHIP.

Randall K. French
RANDALL K. FRENCH
PROFESSIONAL LAND SURVEYOR
COLORADO REGISTRATION NUMBER: 38512
7/5/17

NOTICE:
ACCORDING TO COLORADO STATE LAW YOU MUST COMMENCE A LEGAL ACTION BASED UPON ANY DEFECT IN THIS SURVEY WITHIN THREE YEARS AFTER YOU FIRST DISCOVER SUCH DEFECT. IN NO EVENT MAY ANY ACTION BASED UPON ANY DEFECT IN THIS SURVEY BE COMMENCED MORE THAN TEN YEARS FROM THE DATE ON THE CERTIFICATION SHOWN HEREON.

WELL PAD - RESOLUTION FED 12-65-29-20-7NH

RESOLUTION FED 12-65-29-20-6NH
WELL LOCATION CERTIFICATE
350' FSL & 935' FEL SESE (SURFACE)
601' FSL & 1190' FEL SESE (HEEL)
LOCATED IN SECTION 29
221' FNL & 1270' FEL NENE (BOTTOM)
LOCATED IN SECTION 20
T12N, R65W, 6TH P.M.
WELD COUNTY, COLORADO

Anadarko E&P
Onshore LLC
1099 18th Street
Denver, Colorado 80202



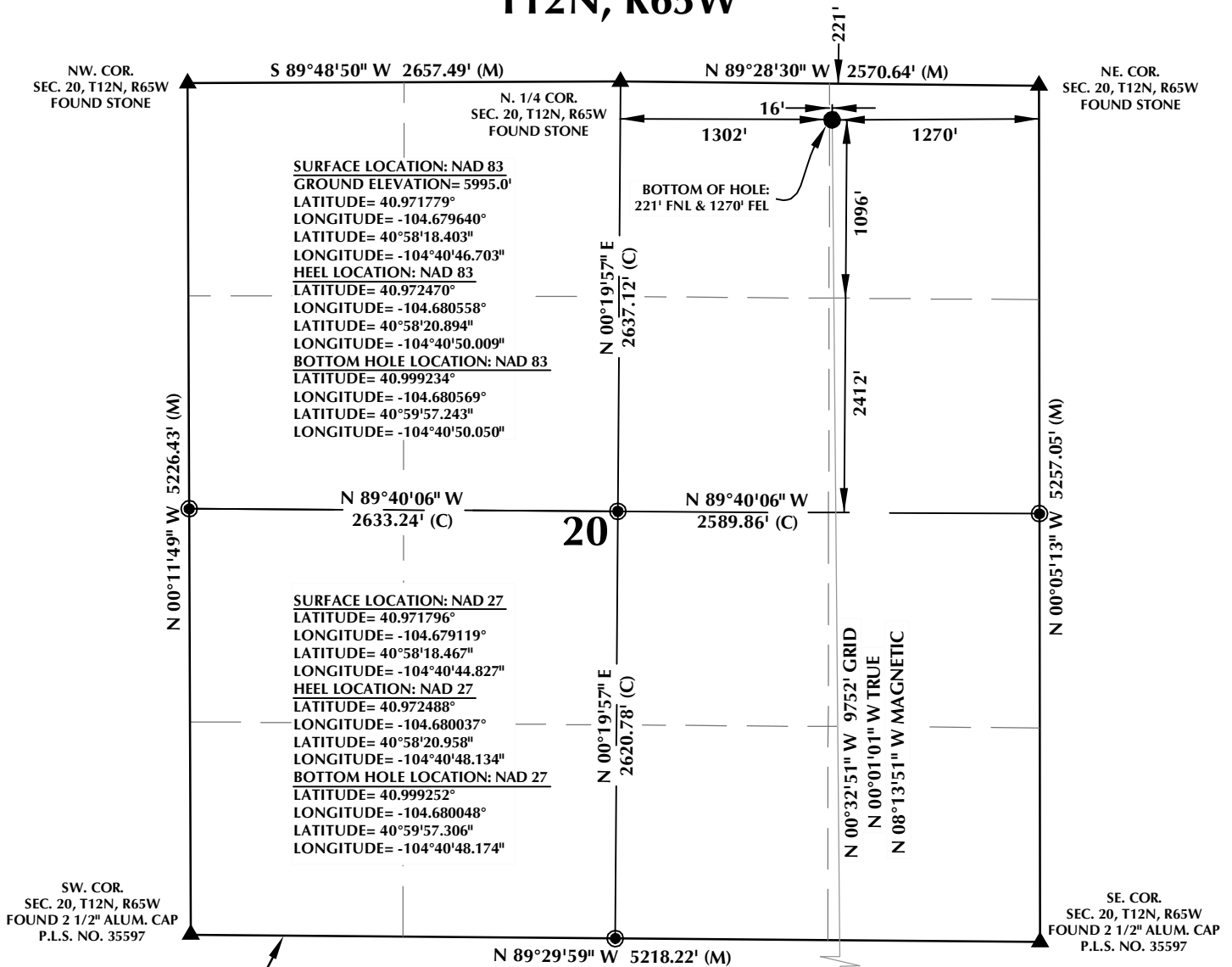
CONSULTING, LLC

SHERIDAN OFFICE
1095 Saberton Avenue
Sheridan, Wyoming 82801
Phone 307-674-0609

LOVELAND OFFICE
1635 Foxtrail Drive, Suite 204
Loveland, Colorado 80538
Phone 970-776-4331

DRAFTED BY:	LMO	CHECKED BY:	RKF	SHEET NO:
DATE DRAFTED:	1/26/15	DATE SURVEYED:	12/10/14	1
REVISED:	7/5/17	FILE NAME:	14-52	1 OF 2

T12N, R65W

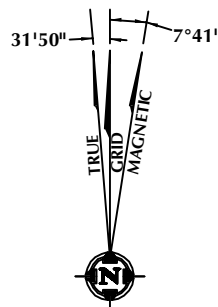


CERTIFICATE OF SURVEYOR:

THIS IS TO CERTIFY THAT THE ABOVE PLAT WAS PREPARED FROM FIELD NOTES OF ACTUAL SURVEY MADE BY ME OR UNDER MY SUPERVISION AND TO THE BEST OF MY KNOWLEDGE AND BELIEF, THIS CERTIFICATE DOES NOT REPRESENT A LAND SURVEY PLAT OR IMPROVEMENT SURVEY PLAT AS DEFINED BY C.R.S. 19-51-102 AND CANNOT BE RELIED UPON TO DETERMINE OWNERSHIP.

Randall K. French
 RANDALL K. FRENCH
 PROFESSIONAL LAND SURVEYOR
 COLORADO REGISTRATION NUMBER: 38512
 7/5/17

NOTICE:
 ACCORDING TO COLORADO STATE LAW YOU MUST COMMENCE ANY LEGAL ACTION BASED UPON ANY DEFECT IN THIS SURVEY WITHIN THREE YEARS AFTER YOU FIRST DISCOVER SUCH DEFECT. IN NO EVENT MAY ANY ACTION BASED UPON ANY DEFECT IN THIS SURVEY BE COMMENCED MORE THAN TEN YEARS FROM THE DATE ON THE CERTIFICATION SHOWN HEREON.



NOTE:
 MAGNETIC NORTH IS CURRENT AS OF 6/28/2017.
 MAGNETIC NORTH CHANGES WEST 0°06' PER YEAR.

NOTES:

- ▲ INDICATES SECTION CORNER
- INDICATES CALCULATED CORNER
- ELEVATION BASED ON NAVD88 (GEOID09)
- BASIS OF BEARING DERIVED FROM COLORADO COORDINATE SYSTEM OF 1983 NORTH ZONE.
- ALL MEASURED DISTANCES ARE GRID.
- COMBINED SCALE FACTOR: .99975846 CALCULATED FROM THE SE. CORNER OF SECTION 20, T12N, R65W
- OPERATOR: CHRIS KASCHMITTER / PDOP = 1.2
- SEE ADDENDUM TO WELL LOCATION CERTIFICATE FOR EXISTING IMPROVEMENTS WITHIN 500' OF THE WELL PAD.
- WELL FOOTAGES ARE MEASURED AT RIGHT ANGLES TO THE SECTION LINES.
- THE BOTTOM OF HOLE BEARS N00°32'51"W, 9752' FROM THE HEEL LOCATION.



WELL PAD - RESOLUTION FED 12-65-29-20-7NH

RESOLUTION FED 12-65-29-20-6NH
 WELL LOCATION CERTIFICATE
 350' FSL & 935' FEL SESE (SURFACE)
 601' FSL & 1190' FEL SESE (HEEL)
 LOCATED IN SECTION 29
 221' FNL & 1270' FEL NENE (BOTTOM)
 LOCATED IN SECTION 20
 T12N, R65W, 6TH P.M.
 WELD COUNTY, COLORADO

**Anadarko E&P
 Onshore LLC**
 1099 18th Street
 Denver, Colorado 80202



CONSULTING, LLC

SHERIDAN OFFICE
 1095 Saberton Avenue
 Sheridan, Wyoming 82801
 Phone 307-674-0609

LOVELAND OFFICE
 1635 Foxtrail Drive, Suite 204
 Loveland, Colorado 80538
 Phone 970-776-4331

DRAFTED BY:	LMO	CHECKED BY:	RKF	SHEET NO:
DATE DRAFTED:	1/26/15	DATE SURVEYED:	12/10/14	2
REVISED:	7/5/17	FILE NAME:	14-52	2 OF 2