

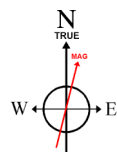
# CAPTIVA ENERGY PARTNERS

Location: COLORADO Slot: SLOT#06 STILLROVEN FARM 6 (640'FNL & 310'FEL SEC.5)  
Field: WELD COUNTY (NAD83,TRUE NORTH) Well: STILLROVEN FARM 6  
Facility: SEC.05-T03N-R68W Wellbore: STILLROVEN FARM 6 PWB

Plot reference wellpath is STILLROVEN FARM 6 REV-C.0 PWP	Grid System: NAD83 / Lambert Colorado SP, Northern Zone (501), US feet
True vertical depths are referenced to ENSIGN 153 (23) (RKB)	North Reference: True north
Measured depths are referenced to ENSIGN 153 (23) (RKB)	Scale: True distance
ENSIGN 153 (23) (RKB) to Mean Sea Level: 5097 feet	Depths are in feet
Mean Sea Level to Mud line (At Slot: SLOT#06 STILLROVEN FARM 6 (640'FNL & 310'FEL SEC.5)): 0 feet	Created by: bushjamh on 2018-04-07
Coordinates are in feet referenced to Slot	Database: Denver



**BAKER  
HUGHES**  
a GE company



BGGM (1900.0 to 2019.0) Dip: 66.68° Field: 52229.6 nT  
Magnetic North is 8.46 degrees East of True North (at 1/29/2018)

To correct azimuth from Magnetic to True add 8.46 degrees

Scale 1 inch = 1500

-7500

-6000

-4500

Easting (ft)

-3000

-1500

0

SECTION 05-T03N-R68W

SECTION 05-T03N-R68W SETBACKS 460'E/W

SLOT#04 STILLROVEN FARM 4 (610'FNL & 310'FEL SEC.5)

9.625in Casing Surface : 1545.86ft TVD, 2.98ft N, 11.90ft W

LANDING (1125'FNL & 106'FEL,SEC.05) : 7167.31ft TVD, 481.99ft S, 204.82ft E

460' CROSS (1141'FNL & 460'FEL,SEC.05) : 7149.95ft TVD, 503.67ft S, 149.93ft W

STILLROVEN FARM 6 EP REV-3 (1125'FNL & 460'FEL SEC.5)

BHGE MWD LAST SURVEY (1129'FNL & 494'FWL,SEC.05) : 7063.05ft TVD, 565.22ft S, 4467.73ft W

PTB (1125'FNL & 470'FWL,SEC.05) : 7062.45ft TVD, 561.81ft S, 4491.48ft W

STILLROVEN FARM 6 BHL REV-2 (1125'FNL & 460'FWL SEC.5)

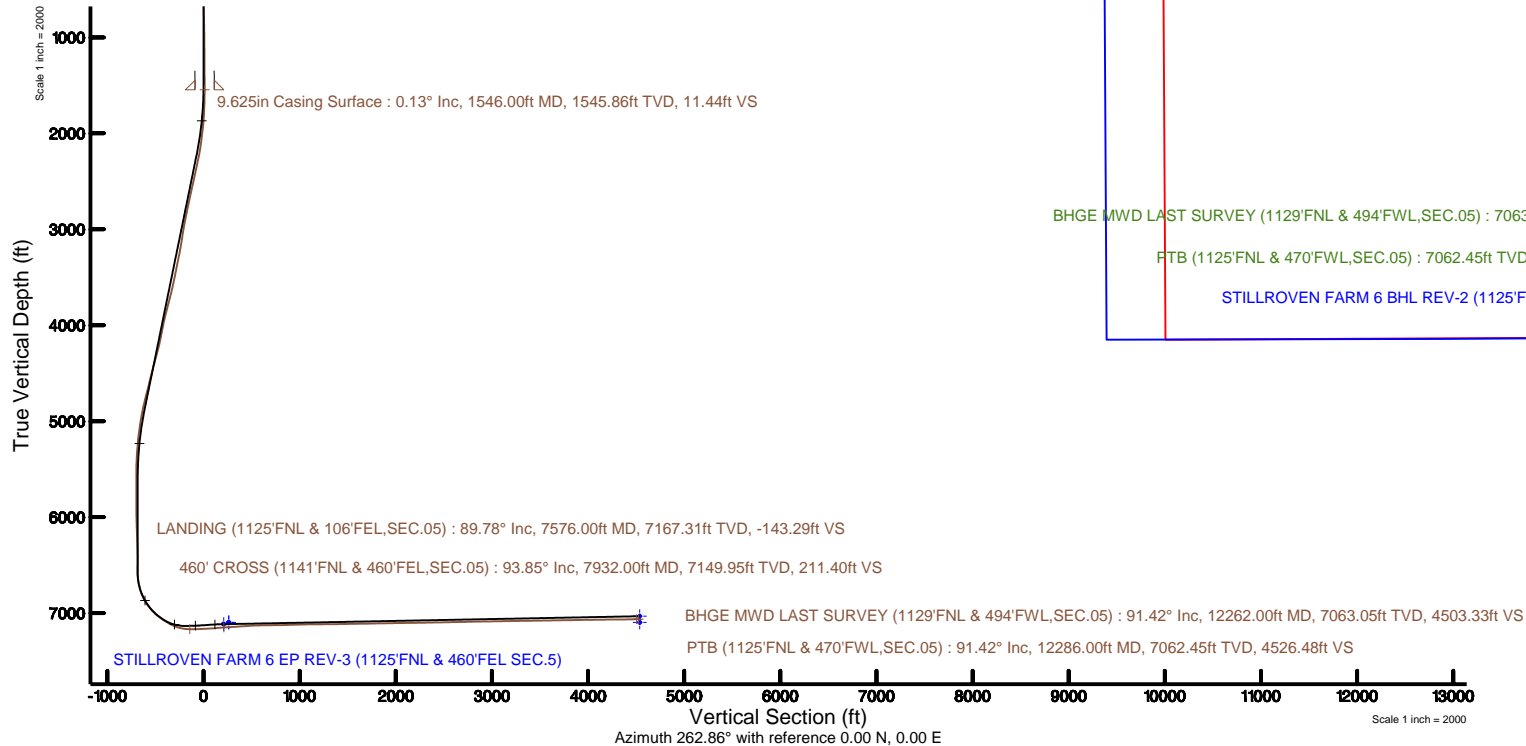
0

-1500

-3000

-4500

Northing (ft)



# Actual Wellpath Report

## STILLROVEN FARM 6 AWP

Page 1 of 8



### REFERENCE WELLPATH IDENTIFICATION

Operator	CAPTIVA ENERGY PARTNERS	Slot	SLOT#06 STILLROVEN FARM 6 (640'FNL & 310'FEL SEC.5)
Area	COLORADO	Well	STILLROVEN FARM 6
Field	WELD COUNTY (NAD83,TRUE NORTH)	Wellbore	STILLROVEN FARM 6 AWB
Facility	SEC.05-T03N-R68W		

### REPORT SETUP INFORMATION

Projection System	NAD83 / Lambert Colorado SP, Northern Zone (501), US feet	Software System	WellArchitect® 5.1
North Reference	True	User	Bushjamh
Scale	0.999957	Report Generated	4/7/2018 at 8:10:10 PM
Convergence at slot	0.31° East	Database/Source file	Denver/STILLROVEN_FARM_6_AWP.xml

### WELLPATH LOCATION

	Local coordinates		Grid coordinates		Geographic coordinates	
	North[ft]	East[ft]	Easting[US ft]	Northing[US ft]	Latitude	Longitude
Slot Location	-76.50	-0.00	3134291.43	1338120.64	40°15'37.944"N	105°01'07.716"W
Facility Reference Pt			3134291.01	1338197.14	40°15'38.700"N	105°01'07.716"W
Field Reference Pt			3134291.01	1338197.14	40°15'38.700"N	105°01'07.716"W

### WELLPATH DATUM

Calculation method	Minimum curvature	ENSIGN 153 (23') (RKB) to Facility Vertical Datum	5097.00ft
Horizontal Reference Pt	Slot	ENSIGN 153 (23') (RKB) to Mean Sea Level	5097.00ft
Vertical Reference Pt	ENSIGN 153 (23') (RKB)	ENSIGN 153 (23') (RKB) to Mud Line at Slot (SLOT#06 STILLROVEN FARM 6 (640'FNL & 310'FEL SEC.5))	5097.00ft
MD Reference Pt	ENSIGN 153 (23') (RKB)	Section Origin	N 0.00, E 0.00 ft
Field Vertical Reference	Mean Sea Level	Section Azimuth	262.86°

# Actual Wellpath Report

STILLROVEN FARM 6 AWP

Page 2 of 8



## REFERENCE WELLPATH IDENTIFICATION

Operator	CAPTIVA ENERGY PARTNERS	Slot	SLOT#06 STILLROVEN FARM 6 (640'FNL & 310'FEL SEC.5)
Area	COLORADO	Well	STILLROVEN FARM 6
Field	WELD COUNTY (NAD83,TRUE NORTH)	Wellbore	STILLROVEN FARM 6 AWB
Facility	SEC.05-T03N-R68W		

## WELLPATH DATA (141 stations) † = interpolated/extrapolated station

MD [ft]	Inclination [°]	Azimuth [°]	TVD [ft]	Vert Sect [ft]	North [ft]	East [ft]	Latitude	Longitude	DLS [°/100ft]	Comments
0.00†	0.000	25.050	0.00	0.00	0.00	0.00	40°15'37.944"N	105°01'07.716"W	0.00	
23.00	0.000	25.050	23.00	0.00	0.00	0.00	40°15'37.944"N	105°01'07.716"W	0.00	
233.00	0.460	25.050	233.00	-0.45	0.76	0.36	40°15'37.952"N	105°01'07.711"W	0.22	
323.00	0.620	357.740	322.99	-0.68	1.58	0.49	40°15'37.960"N	105°01'07.710"W	0.33	
414.00	0.520	313.260	413.99	-0.46	2.35	0.17	40°15'37.967"N	105°01'07.714"W	0.48	
504.00	0.720	319.720	503.98	0.11	3.06	-0.49	40°15'37.974"N	105°01'07.722"W	0.24	
593.00	0.840	302.760	592.98	0.91	3.84	-1.40	40°15'37.982"N	105°01'07.734"W	0.29	
682.00	1.510	297.270	681.96	2.38	4.73	-2.99	40°15'37.991"N	105°01'07.755"W	0.76	
772.00	1.570	287.250	771.92	4.48	5.64	-5.23	40°15'38.000"N	105°01'07.783"W	0.31	
862.00	1.260	281.720	861.90	6.54	6.21	-7.37	40°15'38.005"N	105°01'07.811"W	0.38	
952.00	0.770	235.920	951.88	8.02	6.07	-8.84	40°15'38.004"N	105°01'07.830"W	1.01	
1042.00	0.780	221.260	1041.88	9.01	5.27	-9.75	40°15'37.996"N	105°01'07.842"W	0.22	
1132.00	0.700	218.920	1131.87	9.87	4.38	-10.50	40°15'37.987"N	105°01'07.851"W	0.10	
1221.00	0.640	173.420	1220.86	10.27	3.47	-10.78	40°15'37.978"N	105°01'07.855"W	0.59	
1311.00	0.530	244.940	1310.86	10.67	2.79	-11.10	40°15'37.972"N	105°01'07.859"W	0.77	
1401.00	0.330	282.070	1400.86	11.31	2.67	-11.73	40°15'37.970"N	105°01'07.867"W	0.37	
1491.00	0.190	4.210	1490.86	11.52	2.87	-11.97	40°15'37.972"N	105°01'07.870"W	0.40	
1614.00	0.310	119.220	1613.86	11.21	2.91	-11.67	40°15'37.973"N	105°01'07.866"W	0.35	
1703.00	3.380	128.400	1702.80	9.18	1.17	-9.40	40°15'37.956"N	105°01'07.837"W	3.45	
1793.00	3.760	132.390	1792.62	5.41	-2.47	-5.14	40°15'37.920"N	105°01'07.782"W	0.50	
1883.00	6.530	117.360	1882.26	-0.72	-6.81	1.58	40°15'37.877"N	105°01'07.696"W	3.40	
1971.00	8.740	119.780	1969.47	-10.19	-12.44	11.83	40°15'37.821"N	105°01'07.563"W	2.54	
2061.00	9.900	130.450	2058.29	-20.88	-20.85	23.66	40°15'37.738"N	105°01'07.411"W	2.31	
2151.00	12.500	130.340	2146.57	-32.68	-32.18	36.97	40°15'37.626"N	105°01'07.239"W	2.89	
2241.00	15.950	127.380	2233.80	-48.08	-45.99	54.23	40°15'37.489"N	105°01'07.017"W	3.92	
2330.00	15.670	125.240	2319.43	-65.68	-60.35	73.76	40°15'37.348"N	105°01'06.765"W	0.73	
2419.00	15.960	125.020	2405.06	-83.63	-74.31	93.60	40°15'37.210"N	105°01'06.509"W	0.33	
2509.00	15.840	119.680	2491.62	-102.63	-87.49	114.40	40°15'37.079"N	105°01'06.240"W	1.63	
2599.00	15.230	117.650	2578.33	-122.17	-99.06	135.55	40°15'36.965"N	105°01'05.968"W	0.91	
2689.00	15.890	122.730	2665.04	-141.34	-111.21	156.38	40°15'36.845"N	105°01'05.699"W	1.68	

# Actual Wellpath Report

STILLROVEN FARM 6 AWP

Page 3 of 8



## REFERENCE WELLPATH IDENTIFICATION

Operator	CAPTIVA ENERGY PARTNERS	Slot	SLOT#06 STILLROVEN FARM 6 (640'FNL & 310'FEL SEC.5)
Area	COLORADO	Well	STILLROVEN FARM 6
Field	WELD COUNTY (NAD83,TRUE NORTH)	Wellbore	STILLROVEN FARM 6 AWB
Facility	SEC.05-T03N-R68W		

## WELLPATH DATA (141 stations)

MD [ft]	Inclination [°]	Azimuth [°]	TVD [ft]	Vert Sect [ft]	North [ft]	East [ft]	Latitude	Longitude	DLS [°/100ft]	Comments
2779.00	15.910	125.110	2751.60	-159.92	-124.97	176.84	40°15'36.709"N	105°01'05.435"W	0.72	
2869.00	15.900	128.150	2838.15	-177.73	-139.68	196.62	40°15'36.564"N	105°01'05.180"W	0.93	
2958.00	15.760	129.280	2923.78	-194.64	-154.86	215.57	40°15'36.414"N	105°01'04.935"W	0.38	
3048.00	14.790	135.050	3010.60	-210.10	-170.73	233.15	40°15'36.257"N	105°01'04.709"W	2.00	
3138.00	15.860	140.510	3097.41	-223.73	-188.35	249.08	40°15'36.083"N	105°01'04.503"W	1.99	
3228.00	15.920	135.030	3183.97	-237.88	-206.58	265.63	40°15'35.903"N	105°01'04.290"W	1.67	
3318.00	15.900	127.920	3270.53	-254.15	-222.89	284.08	40°15'35.741"N	105°01'04.052"W	2.16	
3408.00	15.760	126.710	3357.12	-271.68	-237.77	303.60	40°15'35.594"N	105°01'03.800"W	0.40	
3498.00	15.760	126.960	3443.74	-289.27	-252.42	323.17	40°15'35.450"N	105°01'03.548"W	0.08	
3588.00	15.510	122.390	3530.41	-307.32	-266.22	343.10	40°15'35.313"N	105°01'03.291"W	1.40	
3678.00	15.590	120.550	3617.11	-326.17	-278.81	363.67	40°15'35.189"N	105°01'03.025"W	0.56	
3767.00	16.110	106.250	3702.76	-346.98	-288.35	385.84	40°15'35.095"N	105°01'02.739"W	4.42	
3858.00	15.290	101.790	3790.37	-369.92	-294.34	409.70	40°15'35.035"N	105°01'02.431"W	1.60	
3948.00	15.180	105.760	3877.21	-392.00	-299.96	432.66	40°15'34.980"N	105°01'02.135"W	1.17	
4037.00	13.970	112.920	3963.35	-412.03	-307.31	453.77	40°15'34.907"N	105°01'01.863"W	2.44	
4127.00	13.820	122.500	4050.73	-429.71	-317.32	472.85	40°15'34.808"N	105°01'01.617"W	2.56	
4217.00	15.050	123.100	4137.89	-446.91	-329.48	491.70	40°15'34.688"N	105°01'01.374"W	1.38	
4307.00	15.280	110.620	4224.78	-466.33	-340.04	512.60	40°15'34.584"N	105°01'01.104"W	3.63	
4396.00	15.200	93.120	4310.69	-488.20	-344.80	535.23	40°15'34.537"N	105°01'00.812"W	5.15	
4486.00	15.240	86.720	4397.54	-511.61	-344.77	558.83	40°15'34.537"N	105°01'00.508"W	1.87	
4576.00	15.120	91.090	4484.40	-535.03	-344.31	582.37	40°15'34.541"N	105°01'00.204"W	1.28	
4666.00	14.550	100.790	4571.42	-557.41	-346.66	605.22	40°15'34.518"N	105°00'59.910"W	2.83	
4755.00	15.150	104.200	4657.45	-578.88	-351.60	627.47	40°15'34.469"N	105°00'59.622"W	1.19	
4845.00	15.130	105.160	4744.32	-600.70	-357.56	650.21	40°15'34.411"N	105°00'59.329"W	0.28	
4936.00	14.320	107.280	4832.33	-621.93	-364.01	672.42	40°15'34.347"N	105°00'59.043"W	1.07	
5026.00	13.730	122.060	4919.68	-640.35	-372.98	692.11	40°15'34.258"N	105°00'58.789"W	4.02	
5116.00	12.070	126.420	5007.41	-655.44	-384.24	708.73	40°15'34.147"N	105°00'58.574"W	2.14	
5206.00	11.760	130.540	5095.47	-668.44	-395.79	723.27	40°15'34.033"N	105°00'58.387"W	1.01	
5296.00	10.270	135.470	5183.81	-679.48	-407.47	735.87	40°15'33.917"N	105°00'58.224"W	1.96	
5385.00	10.320	148.610	5271.39	-687.58	-419.93	745.59	40°15'33.794"N	105°00'58.099"W	2.63	

# Actual Wellpath Report

## STILLROVEN FARM 6 AWP

Page 4 of 8



REFERENCE WELLPATH IDENTIFICATION			
Operator	CAPTIVA ENERGY PARTNERS	Slot	SLOT#06 STILLROVEN FARM 6 (640'FNL & 310'FEL SEC.5)
Area	COLORADO	Well	STILLROVEN FARM 6
Field	WELD COUNTY (NAD83,TRUE NORTH)	Wellbore	STILLROVEN FARM 6 AWB
Facility	SEC.05-T03N-R68W		

WELLPATH DATA (141 stations)										
MD [ft]	Inclination [°]	Azimuth [°]	TVD [ft]	Vert Sect [ft]	North [ft]	East [ft]	Latitude	Longitude	DLS [°/100ft]	Comments
5476.00	6.750	144.950	5361.37	-693.43	-431.27	752.91	40°15'33.682"N	105°00'58.005"W	3.97	
5566.00	3.710	135.010	5450.98	-697.69	-437.67	758.01	40°15'33.619"N	105°00'57.939"W	3.51	
5656.00	0.310	292.850	5540.93	-699.27	-439.63	759.84	40°15'33.600"N	105°00'57.915"W	4.44	
5746.00	0.160	246.150	5630.93	-698.94	-439.59	759.50	40°15'33.600"N	105°00'57.920"W	0.26	
5789.00	0.070	196.260	5673.93	-698.87	-439.64	759.44	40°15'33.599"N	105°00'57.920"W	0.29	
5879.00	0.170	205.250	5763.93	-698.77	-439.81	759.37	40°15'33.598"N	105°00'57.921"W	0.11	
5969.00	0.070	175.580	5853.93	-698.70	-439.99	759.31	40°15'33.596"N	105°00'57.922"W	0.13	
6060.00	0.330	234.080	5944.92	-698.47	-440.19	759.11	40°15'33.594"N	105°00'57.925"W	0.33	
6150.00	1.690	249.230	6034.91	-696.95	-440.82	757.66	40°15'33.588"N	105°00'57.943"W	1.53	
6240.00	2.320	246.520	6124.85	-693.91	-442.01	754.74	40°15'33.576"N	105°00'57.981"W	0.71	
6330.00	1.790	253.780	6214.79	-690.78	-443.13	751.72	40°15'33.565"N	105°00'58.020"W	0.65	
6420.00	1.790	261.940	6304.75	-687.98	-443.72	748.98	40°15'33.559"N	105°00'58.055"W	0.28	
6510.00	1.720	262.610	6394.71	-685.23	-444.09	746.25	40°15'33.555"N	105°00'58.090"W	0.08	
6600.00	2.600	96.470	6484.68	-685.86	-444.50	746.94	40°15'33.551"N	105°00'58.082"W	4.77	
6690.00	1.590	256.820	6574.66	-686.60	-445.01	747.75	40°15'33.546"N	105°00'58.071"W	4.59	
6780.00	7.940	269.980	6664.30	-679.19	-445.30	740.31	40°15'33.543"N	105°00'58.167"W	7.11	
6870.00	16.160	268.430	6752.25	-660.52	-445.65	721.54	40°15'33.540"N	105°00'58.409"W	9.14	
6959.00	25.210	264.250	6835.43	-629.18	-447.89	690.24	40°15'33.518"N	105°00'58.813"W	10.30	
7050.00	35.400	263.280	6913.89	-583.33	-452.93	644.66	40°15'33.468"N	105°00'59.401"W	11.21	
7139.00	44.190	264.450	6982.20	-526.43	-458.96	588.07	40°15'33.409"N	105°01'00.131"W	9.91	
7230.00	52.410	266.450	7042.69	-458.62	-464.26	520.40	40°15'33.356"N	105°01'01.004"W	9.18	
7281.00	57.400	267.710	7072.01	-417.02	-466.38	478.74	40°15'33.335"N	105°01'01.541"W	9.99	
7319.00	60.000	268.870	7091.75	-384.71	-467.34	446.29	40°15'33.326"N	105°01'01.959"W	7.32	
7344.00	59.910	268.420	7104.26	-363.17	-467.85	424.66	40°15'33.321"N	105°01'02.239"W	1.60	
7410.00	66.410	265.850	7134.05	-304.48	-470.83	365.88	40°15'33.291"N	105°01'02.997"W	10.44	
7499.00	79.470	265.400	7160.10	-219.68	-477.32	281.23	40°15'33.227"N	105°01'04.089"W	14.68	
7576.00	89.780	267.580	7167.31	-143.29	-481.99	204.82	40°15'33.181"N	105°01'05.074"W	13.68	LANDING (1125'FNL & 106'FEL,SEC.05)
7679.00	92.000	267.350	7165.71	-40.64	-486.55	101.94	40°15'33.136"N	105°01'06.401"W	2.17	
7769.00	93.510	266.930	7161.38	49.00	-491.03	12.16	40°15'33.092"N	105°01'07.559"W	1.74	
7859.00	94.380	265.570	7155.19	138.63	-496.91	-77.43	40°15'33.034"N	105°01'08.715"W	1.79	

# Actual Wellpath Report

## STILLROVEN FARM 6 AWP

Page 5 of 8



### REFERENCE WELLPATH IDENTIFICATION

Operator	CAPTIVA ENERGY PARTNERS	Slot	SLOT#06 STILLROVEN FARM 6 (640'FNL & 310'FEL SEC.5)
Area	COLORADO	Well	STILLROVEN FARM 6
Field	WELD COUNTY (NAD83,TRUE NORTH)	Wellbore	STILLROVEN FARM 6 AWB
Facility	SEC.05-T03N-R68W		

### WELLPATH DATA (141 stations) † = interpolated/extrapolated station

MD [ft]	Inclination [°]	Azimuth [°]	TVD [ft]	Vert Sect [ft]	North [ft]	East [ft]	Latitude	Longitude	DLS [°/100ft]	Comments
7932.00†	93.853	263.769	7149.95	211.40	-503.67	-149.93	40°15'32.967"N	105°01'09.650"W	2.56	460' CROSS (1141'FNL & 460'FEL,SEC.05)
7949.00	93.730	263.350	7148.82	228.36	-505.57	-166.78	40°15'32.948"N	105°01'09.867"W	2.56	
8038.00	93.950	264.400	7142.86	317.15	-515.05	-255.08	40°15'32.854"N	105°01'11.006"W	1.20	
8128.00	93.980	267.060	7136.64	406.81	-521.73	-344.60	40°15'32.788"N	105°01'12.161"W	2.95	
8218.00	93.420	266.380	7130.83	496.42	-526.87	-434.27	40°15'32.737"N	105°01'13.317"W	0.98	
8307.00	91.020	266.320	7127.38	585.18	-532.53	-523.01	40°15'32.682"N	105°01'14.462"W	2.70	
8396.00	90.710	268.960	7126.04	673.85	-536.20	-611.92	40°15'32.645"N	105°01'15.609"W	2.99	
8487.00	90.740	273.910	7124.89	763.80	-533.92	-702.86	40°15'32.668"N	105°01'16.782"W	5.44	
8576.00	91.540	275.530	7123.12	850.88	-526.60	-791.53	40°15'32.740"N	105°01'17.926"W	2.03	
8666.00	91.390	270.290	7120.82	939.44	-522.03	-881.36	40°15'32.785"N	105°01'19.084"W	5.82	
8756.00	91.790	264.700	7118.32	1029.07	-525.96	-971.20	40°15'32.746"N	105°01'20.243"W	6.22	
8849.00	90.520	262.010	7116.44	1122.04	-536.72	-1063.55	40°15'32.640"N	105°01'21.434"W	3.20	
8939.00	90.310	266.230	7115.79	1211.99	-545.94	-1153.05	40°15'32.549"N	105°01'22.589"W	4.69	
9029.00	90.590	270.110	7115.08	1301.59	-548.81	-1242.98	40°15'32.520"N	105°01'23.749"W	4.32	
9119.00	90.860	272.450	7113.94	1390.60	-546.80	-1332.95	40°15'32.540"N	105°01'24.909"W	2.62	
9208.00	90.830	272.700	7112.63	1478.32	-542.80	-1421.85	40°15'32.580"N	105°01'26.056"W	0.28	
9298.00	90.950	270.810	7111.23	1567.22	-540.05	-1511.79	40°15'32.607"N	105°01'27.216"W	2.10	
9388.00	90.770	269.280	7109.88	1656.50	-539.98	-1601.78	40°15'32.608"N	105°01'28.377"W	1.71	
9478.00	91.260	269.840	7108.29	1745.87	-540.67	-1691.76	40°15'32.601"N	105°01'29.537"W	0.83	
9568.00	90.950	272.500	7106.55	1834.90	-538.83	-1781.72	40°15'32.619"N	105°01'30.697"W	2.98	
9658.00	91.110	271.670	7104.93	1923.72	-535.56	-1871.64	40°15'32.651"N	105°01'31.857"W	0.94	
9747.00	90.680	270.190	7103.54	2011.82	-534.11	-1960.62	40°15'32.665"N	105°01'33.005"W	1.73	
9837.00	91.170	270.610	7102.09	2101.03	-533.48	-2050.60	40°15'32.671"N	105°01'34.166"W	0.72	
9926.00	90.430	273.910	7100.85	2188.81	-529.97	-2139.51	40°15'32.706"N	105°01'35.313"W	3.80	
10016.00	91.170	274.520	7099.59	2277.04	-523.36	-2229.26	40°15'32.771"N	105°01'36.470"W	1.07	
10106.00	91.050	272.720	7097.85	2365.44	-517.68	-2319.06	40°15'32.827"N	105°01'37.628"W	2.00	
10196.00	90.950	271.230	7096.28	2454.28	-514.58	-2408.99	40°15'32.858"N	105°01'38.788"W	1.66	
10286.00	91.230	271.230	7094.56	2543.31	-512.65	-2498.95	40°15'32.877"N	105°01'39.949"W	0.31	
10376.00	91.140	271.100	7092.70	2632.34	-510.82	-2588.91	40°15'32.895"N	105°01'41.109"W	0.18	
10466.00	91.290	269.060	7090.79	2721.60	-510.69	-2678.89	40°15'32.896"N	105°01'42.270"W	2.27	



# Actual Wellpath Report

## STILLROVEN FARM 6 AWP

Page 6 of 8



### REFERENCE WELLPATH IDENTIFICATION

Operator	CAPTIVA ENERGY PARTNERS	Slot	SLOT#06 STILLROVEN FARM 6 (640'FNL & 310'FEL SEC.5)
Area	COLORADO	Well	STILLROVEN FARM 6
Field	WELD COUNTY (NAD83,TRUE NORTH)	Wellbore	STILLROVEN FARM 6 AWB
Facility	SEC.05-T03N-R68W		

### WELLPATH DATA (141 stations)

MD [ft]	Inclination [°]	Azimuth [°]	TVD [ft]	Vert Sect [ft]	North [ft]	East [ft]	Latitude	Longitude	DLS [°/100ft]	Comments
10555.00	91.290	266.040	7088.79	2810.27	-514.49	-2767.77	40°15'32.858"N	105°01'43.416"W	3.39	
10645.00	91.200	264.690	7086.83	2900.16	-521.76	-2857.46	40°15'32.786"N	105°01'44.573"W	1.50	
10735.00	90.400	266.960	7085.58	2990.03	-528.32	-2947.20	40°15'32.722"N	105°01'45.731"W	2.67	
10825.00	91.140	267.660	7084.37	3079.74	-532.54	-3037.09	40°15'32.680"N	105°01'46.890"W	1.13	
10915.00	91.350	266.940	7082.41	3169.45	-536.78	-3126.97	40°15'32.638"N	105°01'48.049"W	0.83	
11004.00	90.620	265.590	7080.88	3258.28	-542.57	-3215.77	40°15'32.580"N	105°01'49.195"W	1.72	
11094.00	90.520	267.730	7079.99	3348.07	-547.82	-3305.60	40°15'32.528"N	105°01'50.353"W	2.38	
11183.00	91.050	268.640	7078.77	3436.68	-550.64	-3394.55	40°15'32.500"N	105°01'51.501"W	1.18	
11273.00	91.050	272.400	7077.12	3525.84	-549.82	-3484.52	40°15'32.508"N	105°01'52.661"W	4.18	
11363.00	90.950	271.710	7075.55	3614.67	-546.59	-3574.44	40°15'32.540"N	105°01'53.821"W	0.77	
11453.00	90.800	269.340	7074.17	3703.85	-545.77	-3664.42	40°15'32.548"N	105°01'54.982"W	2.64	
11543.00	90.890	267.870	7072.85	3793.38	-547.96	-3754.38	40°15'32.526"N	105°01'56.142"W	1.64	
11633.00	90.860	264.410	7071.47	3883.21	-554.02	-3844.16	40°15'32.466"N	105°01'57.300"W	3.84	
11723.00	90.860	260.250	7070.12	3973.18	-566.02	-3933.32	40°15'32.348"N	105°01'58.450"W	4.62	
11813.00	90.800	259.870	7068.82	4063.06	-581.56	-4021.96	40°15'32.194"N	105°01'59.593"W	0.43	
11903.00	90.860	264.880	7067.51	4153.02	-593.49	-4111.13	40°15'32.076"N	105°02'00.743"W	5.57	
11992.00	90.650	269.950	7066.34	4241.70	-597.51	-4200.00	40°15'32.036"N	105°02'01.890"W	5.70	
12082.00	89.630	277.130	7066.12	4330.08	-591.95	-4289.77	40°15'32.091"N	105°02'03.047"W	8.06	
12171.00	91.420	279.430	7065.30	4415.86	-579.14	-4377.83	40°15'32.217"N	105°02'04.183"W	3.27	
12262.00	91.420	278.170	7063.05	4503.33	-565.22	-4467.73	40°15'32.355"N	105°02'05.343"W	1.38	BHGE MWD LAST SURVEY (1129'FNL & 494'FWL,SEC.05)
12286.00	91.420	278.170	7062.45	4526.48	-561.81	-4491.48	40°15'32.388"N	105°02'05.649"W	0.00	PTB (1125'FNL & 470'FWL,SEC.05)

### HOLE & CASING SECTIONS - Ref Wellbore: STILLROVEN FARM 6 AWB Ref Wellpath: STILLROVEN FARM 6 AWP

String/Diameter	Start MD [ft]	End MD [ft]	Interval [ft]	Start TVD [ft]	End TVD [ft]	Start N/S [ft]	Start E/W [ft]	End N/S [ft]	End E/W [ft]
9.625in Casing Surface	23.00	1546.00	1523.00	23.00	1545.86	0.00	0.00	2.98	-11.90

# Actual Wellpath Report

## STILLROVEN FARM 6 AWP

Page 7 of 8



REFERENCE WELLPATH IDENTIFICATION			
Operator	CAPTIVA ENERGY PARTNERS	Slot	SLOT#06 STILLROVEN FARM 6 (640'FNL & 310'FEL SEC.5)
Area	COLORADO	Well	STILLROVEN FARM 6
Field	WELD COUNTY (NAD83,TRUE NORTH)	Wellbore	STILLROVEN FARM 6 AWB
Facility	SEC.05-T03N-R68W		

TARGETS								
Name	TVD [ft]	North [ft]	East [ft]	Grid East [US ft]	Grid North [US ft]	Latitude	Longitude	Shape
SECTION 05-T03N-R68W	8.00	76.50	0.00	3134291.01	1338197.13	40°15'38.700"N	105°01'07.716"W	polygon
STILLROVEN FARM 6 BHL REV-2 (1125'FNL & 460'FWL SEC.5)	7032.00	-564.26	-4501.92	3129792.84	1337531.98	40°15'32.364"N	105°02'05.784"W	point
STILLROVEN FARM 6 BHL REV-1 (1125'FNL & 460'FWL SEC.5)	7096.00	-564.26	-4501.92	3129792.84	1337531.98	40°15'32.364"N	105°02'05.784"W	point
STILLROVEN FARM 6 EP REV-1 (1125'FNL & 513'FEL SEC.5)	7096.00	-488.17	-203.74	3134090.34	1337631.39	40°15'33.120"N	105°01'10.344"W	point
STILLROVEN FARM 6 EP REV-2 (1125'FNL & 511'FEL SEC.5)	7096.00	-488.17	-202.00	3134092.09	1337631.40	40°15'33.120"N	105°01'10.322"W	point
STILLROVEN FARM 6 EP REV-3 (1125'FNL & 460'FEL SEC.5)	7115.00	-488.17	-150.74	3134143.34	1337631.68	40°15'33.120"N	105°01'09.660"W	point
SECTION 05-T03N-R68W SETBACKS 460'E/W	7461.00	76.50	0.00	3134291.01	1338197.13	40°15'38.700"N	105°01'07.716"W	polygon

WELLPATH COMPOSITION - Ref Wellbore: STILLROVEN FARM 6 AWB Ref Wellpath: STILLROVEN FARM 6 AWP				
Start MD [ft]	End MD [ft]	Positional Uncertainty Model	Log Name/Comment	Wellbore
23.00	1491.00	BHI NaviTrak (Rotating)	BHI NAVITRAK 13.5" (ROTATING)<233-1491>	STILLROVEN FARM 6 AWB
1491.00	12262.00	BHI AutoTrak Curve (Short)	BHI AUTO TRAK CURVE 8.5" (ROTATING)<1614-12262>	STILLROVEN FARM 6 AWB
12262.00	12286.00	Blind Drilling (std)	Projection to bit	STILLROVEN FARM 6 AWB



# Actual Wellpath Report

STILLROVEN FARM 6 AWP

Page 8 of 8

## REFERENCE WELLPATH IDENTIFICATION

Operator	CAPTIVA ENERGY PARTNERS	Slot	SLOT#06 STILLROVEN FARM 6 (640'FNL & 310'FEL SEC.5)
Area	COLORADO	Well	STILLROVEN FARM 6
Field	WELD COUNTY (NAD83,TRUE NORTH)	Wellbore	STILLROVEN FARM 6 AWB
Facility	SEC.05-T03N-R68W		

## WELLPATH COMMENTS

MD [ft]	Inclination [°]	Azimuth [°]	TVD [ft]	Comment
7576.00	89.780	267.580	7167.31	LANDING (1125'FNL & 106'FEL,SEC.05)
7932.00	93.853	263.769	7149.95	460' CROSS (1141'FNL & 460'FEL,SEC.05)
12262.00	91.420	278.170	7063.05	BHGE MWD LAST SURVEY (1129'FNL & 494'FWL,SEC.05)
12286.00	91.420	278.170	7062.45	PTB (1125'FNL & 470'FWL,SEC.05)