



Captiva Energy Partners

Production Post-Job Report

Stillroven Farm 6 (API 05-123-45407)

S:5 T:3N R:68W Weld, CO

Quote #:

I Execution #:



Captiva Energy Partners, LLC

Josh Falls | (720) 420-5720 | josh.falls@iptenergyservices.com

Captiva Energy Partners | 1165 Delaware Street, Suite 160 | Denver, CO 80228

Dear Mr. Falls,

Thank you for the opportunity to provide cementing services on this well. BJ Services strives to achieve complete customer satisfaction. If you have any questions regarding the services or data provided, please contact BJ Services at any time.

Sincerely,

Karl Griesser

Field Engineer I | (713) 829-7498 | karl.griesser@bjservices.com

Field Office 1716 East Allison Rd., Cheyenne WY, 82007

Phone: (307) 638-5585

Sales Office 999 18th St. Suite 1200 Denver, CO 80202

Phone: (281) 408-2361

Cementing Treatment



Start Date	2/25/18	Well	Stillroven Farm 6
End Date	2/25/18	County	Weld
Client	Captiva Energy Partners LLC	State/Province	CO
Client Field Rep	Josh Falls	API	05-123-45407
Service Supervisor	Orlando Fuentes	Rig	Ensign 153
Field Ticket No.	FT-04057-W4K4V90202-68362	Type of Job	Long String
District	Cheyenne, WY		

WELL GEOMETRY

Type	ID (in)	OD (in)	Wt. (lb/ft)	MD (ft)	TVD (ft)	Excess(%)	Grade
Previous Casing	8.92	9.63	36.00	1,546.50	1,546.50		J-55
Open Hole	8.50			12,286.00	7,068.00	15.00	
Casing	4.89	5.50	17.00	12,275.00	7,068.00		P-110

Shoe Length (ft): 15

HARDWARE

Bottom Plug Used?	Yes	Centralizers Type	Fenalix/Steel Body
Bottom Plug Provided By	Customer	Landing Collar Depth (ft)	12,260
Bottom Plug Size	5.5	Max Casing Pressure - Rated (psi)	10640
Top Plug Used?	Yes	Max Casing Pressure - Operated (psi)	3100
Top Plug Provided By	Customer	Pipe Movement	No
Top Plug Size	5.5	Job Pumped Through	2" Iron
Centralizers Used	Yes	Top Connection Thread	BTC
Centralizers Quantity	148	Top Connection Size	5.5

Cementing Treatment



CIRCULATION PRIOR TO JOB

Well Circulated By	Rig	Solids Present at End of Circulation	No
Circulation Prior to Job	Yes	10 sec SGS	4
Circulation Time (min)	360	10 min SGS	10
Circulation Rate (bpm)	7	30 min SGS	12
Circulation Volume (bbls)	2520	Flare Prior to/during the Cement Job	No
Lost Circulation Prior to Cement Job	Yes	Gas Present	No
Mud Density In (ppg)	11.6	Gas Units	0
Mud Density Out (ppg)	11.6		
PV Mud In	24		
PV Mud Out	24		
YP Mud In	15		
YP Mud Out	15		

TEMPERATURE

Ambient Temperature (°F)	40	Slurry Cement Temperature (°F)	60
Mix Water Temperature (°F)	65	Flow Line Temperature (°F)	73

BJ FLUID DETAILS

Fluid Type	Fluid Name	Density (ppg)	Yield (Cu Ft/sk)	H2O Req. (gals/sk)	Planned Top of Fluid (Ft)	Length (Ft)	Vol (sk)	Vol (Cu Ft)	Vol (bbls)
Spacer / Pre Flush / Flush	CD Spacer	11.5000			0.00				40.0000
Lead Slurry	BJCem P100.3.01C	12.5000	2.0757	11.84	1,550.00	5,138.00	650	1,354.0000	241.1000
Lead Slurry	BJCem P100.3.01C	12.5000	2.0681	11.81	0.00	1,550.00	200	418.0000	74.3000
Tail Slurry	BJCem P50.6.02C	13.5000	1.4774	7.45	6,688.00	5,577.00	1,000	1,470.0000	261.7000
Displacement 1	Retarded Water	8.3300			11,835.00				10.0000
Displacement Final	Disp. Final (Water)	8.3300			0.00				284.4700

Cementing Treatment



Fluid Type	Fluid Name	Component	Concentration	UOM
Spacer / Pre Flush / Flush	CD Spacer	EXTENDER, BENTONITE	5.0000	PPB
Spacer / Pre Flush / Flush	CD Spacer	GELLANT WATER, GW-86	0.9000	PPB
Spacer / Pre Flush / Flush	CD Spacer	SAND, S-8, Silica Flour, 200 Mesh	208.5300	PPB
Spacer / Pre Flush / Flush	CD Spacer	RETARDER, HIGH TEMP, R-31	0.5100	PPB
Lead Slurry	BJCem P100.3.01C	FLUID LOSS, FL-24	0.3000	BWOB
Lead Slurry	BJCem P100.3.01C	GELLANT WATER, GW-86	0.0500	BWOB
Lead Slurry	BJCem P100.3.01C	RETARDER, HIGH TEMP, R-31	0.2000	BWOB
Lead Slurry	BJCem P100.3.01C	GELLANT WATER, GW-86	0.0500	BWOB
Lead Slurry	BJCem P100.3.01C	CEMENT, ASTM TYPE III	100.0000	PCT
Lead Slurry	BJCem P100.3.01C	Foam Preventer, FP-25	0.3000	BWOB
Lead Slurry	BJCem P100.3.01C	CEMENT, ASTM TYPE III	100.0000	PCT
Lead Slurry	BJCem P100.3.01C	BONDING AGENT, BA-60	0.4000	BWOB
Lead Slurry	BJCem P100.3.01C	IntegraSeal CELLO	0.1300	LBS/SK
Lead Slurry	BJCem P100.3.01C	Foam Preventer, FP-25	0.3000	BWOB
Lead Slurry	BJCem P100.3.01C	RETARDER, HIGH TEMP, R-31	0.1700	BWOB
Lead Slurry	BJCem P100.3.01C	FLUID LOSS, FL-24	0.3000	BWOB
Lead Slurry	BJCem P100.3.01C	IntegraSeal CELLO	0.1300	LBS/SK
Tail Slurry	BJCem P50.6.02C	Foam Preventer, FP-25	0.3000	BWOB
Tail Slurry	BJCem P50.6.02C	FLUID LOSS, FL-66	0.2000	BWOB
Tail Slurry	BJCem P50.6.02C	CEMENT, CLASS G	50.0000	PCT
Tail Slurry	BJCem P50.6.02C	EXTENDER, BENTONITE	2.0000	BWOB
Tail Slurry	BJCem P50.6.02C	GELLANT WATER, GW-86	0.1000	BWOB
Tail Slurry	BJCem P50.6.02C	AR-20	0.1000	BWOB
Tail Slurry	BJCem P50.6.02C	Flyash (Rockies)	50.0000	PCT
Displacement 1	Retarded Water	CLAY STABILIZER ResCare CS	0.0800	GPB
Displacement 1	Retarded Water	Fresh Water	100.0000	PCT
Displacement 1	Retarded Water	RETARDER, R-8L	0.5000	GPB

Cementing Treatment



Fluid Type	Fluid Name	Component	Concentration	UOM
Displacement 1	Retarded Water	BIOCIDE, BIOC11139W	0.0100	GPB
Displacement Final	Displacement Final (Water)	BIOCIDE, BIOC11139W	0.0100	GPB
Displacement Final	Displacement Final (Water)	Fresh Water	100.0000	PCT
Displacement Final	Displacement Final (Water)	CLAY STABILIZER ResCare CS	0.0800	GPB

TREATMENT SUMMARY

Time	Fluid	Rate (bpm)	Fluid Vol. (bbls)	Pipe Pressure (psi)
12:20	CD Spacer	4.00	40.00	498
12:30	BJCem P100.3.01C	6.00	74.30	455
12:50	BJCem P100.3.01C	6.00	241.10	342
13:22	BJCem P50.6.02C	6.00	261.70	186
14:21	Retarded Water	8.00	10.00	47
14:25	Displacement Final (Water)	8.00	284.470	605

DISPLACEMENT AND END OF JOB SUMMARY

Displaced By	BJS	Cement returns During Job	Yes
Calculated Displacement Volume (bbls)	284.47	Amount of Cement Returned/Reversed	140
Actual Displacement Volume (bbls)	280	Method Used to Verify Returns	Visual
Did Float Hold?	Yes	Amount of Spacer to Surface	40
Bump Plug	Yes	Pressure Left on Casing (psi)	0
Bump Plug Pressure (psi)	2456	Amount Bled Back After Job	2.5
Were Returns Planned at Surface	Yes	Total Volume Pumped (bbls)	911.57



Customer Name Captiva Energy
 Well Name StillRoven Farm 6
 Job Type Long String

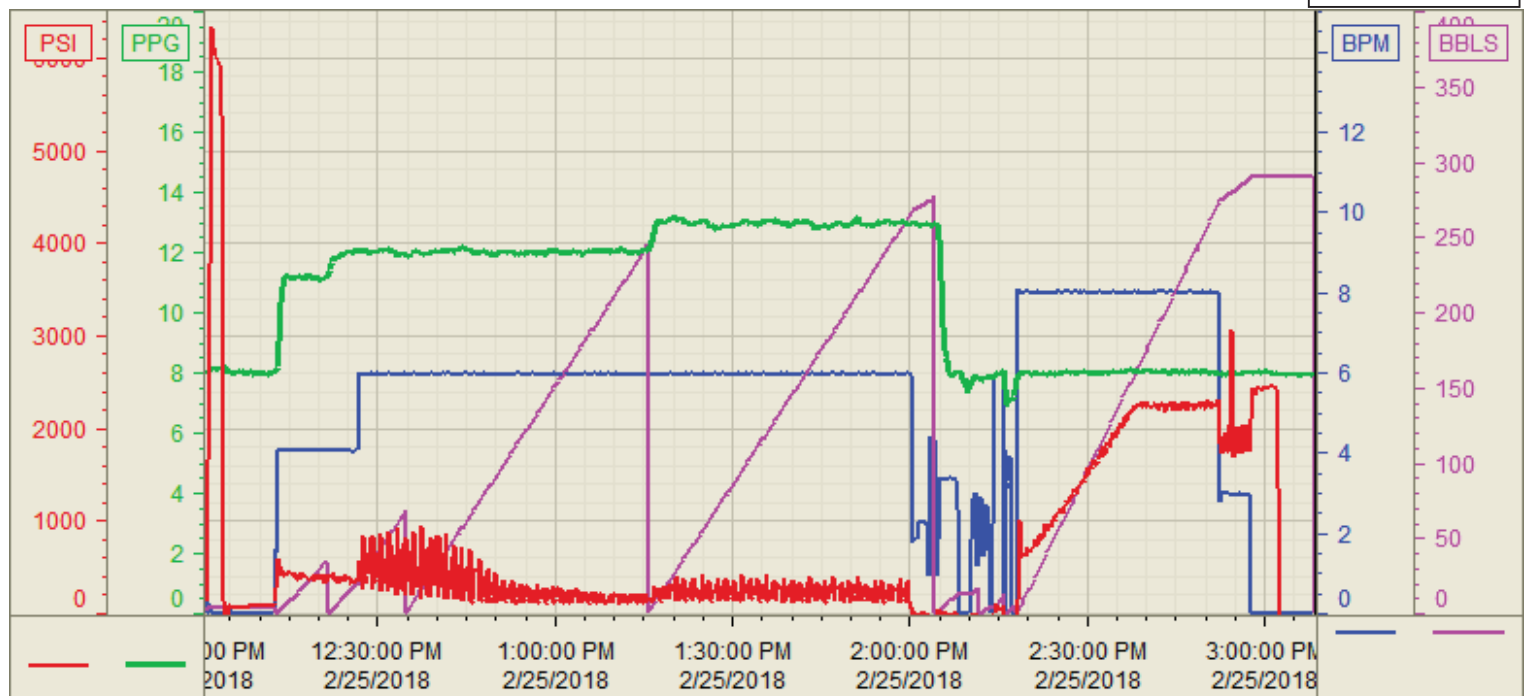
District Cheyenne
 Supervisor Orlando Fuentes
 Engineer _____

Start Date/Time	Event	Density (lb/gal)	Pump Rate (bpm)	Pump Vol (bbls)	Pipe Pressure (psi)	Comments
2/24/2018 20:00	Call Out					BJ SERVICES CREW GETS CALLED OUT
2/25/2018 1:00	Depart Facility					BJ SERVICES CREW DEPARTS FACILITY CHEYENNE WY
3:00	Arrive On Location					BJ SERVICES CREW ARRIVES ON LOCATION . REQUESTED TIME ON LOCATION 0400 HRS
5:00	Waiting					WAITING ON RIG TO CIRC WELL
6:00	Pre Rig Up Meeting					BJ SERVICES CREW HAD A PRE RIG UP MEETING
7:00	Rig Up					BJ SERVICES CREW RIGS UP PUMP AND IRON
11:30	Safety Meeting					BJ SERVICES CREW HAD A SAETY MEETING WITH RIG HANDS AND CO MAN WENT OVER PUMP PROCEDURE
12:05	Pressure Test				6000	PRESSURE TEST PUMPS AND LINES TO 6000 PSI
12:20	Pump Spacer	11.7	4	40	498	PUMP 40 BBL CD SAPCER AT 11.7 PPG AT 4 BPM W/498 PSI
12:30	Pump Lead Cement	12.5	6	313.95	455	PUMP LEAD CEMENT (73.66 BBL 200 SKS 12.5 2.0681 YLD 11.84 CAP CMT 1ST) (240.29 BBL 650 SKS 2.0757 YLD 11.81 G/SK) AT 6 BPM W/455 PSI
13:22	Pump Tail Cement	13.5	6	263.12	186	PUMP TAIL CEMENT (263.12 BBL 13.5 PPG 1.4774 YLD 1000 SKS 7.45 G/SK) AT 6 BPM W/186 PSI
14:10	Shut Down					SHUT DOWN PUMPING CEMENT
14:11	Wash Pumps/Lines					WASH PUMPS AND LIN ES TO PIT
14:21	Drop Bottom Plu					DROP BOTTOM PLUG
14:21	Pump Wet Shoe	8.33	5	10	40	PUMPED 10 BBL H2O W/5 GAL R8-L FOR WET SHOE AND SHUT DOWN
14:25	Drop Top Plug					DROP TOP PLUG
14:25	Start Disp	8.33	8		605	START H2O DISP AT 8 BPM W/ 605 PSI
14:40	Spacer To Surface	8.33	8	100	1556	AT 100 BBL AWAY INTO DISP GOT SPACER TO SURFACE AT 8 BPM W/1556 PSI
14:44	Cement To Surface	8.33	8	140	1970	AT 140 BBL AWAY INTO DISP GOT CEMENT TO SURFACE AT 8 BPM W/1970 PSI
14:59	Slow Down Rate	8.33	3	260	1988	AT 260 BBL AWAY SLOW DOWN RATE TO 3 BPM W/1988 PSI
15:01	Burts Bottom Plug	8.33	3	270	3100	AT 270 BBL AWAY BURST BOTTOM PLUG AT 3100 PSI AT 3 BPM
15:03	Land Top Plug	8.33	3	280	1903	LAND PLUG AT 280 BBL AWAY FINAL CIRC PRESSURE WAS 1903 PSI BUMPED PLUG TO 2456 PSI HOLD 5 MIN
15:08	Check Floats					CHECK FLOATS GOT 2.5 BBL BACK
15:15	Pre Rig Down Meeting					BJ SERVICES CREW HAD A PRE RIG DOWN MEETING
15:30	Rig Down					BJ SERVICES CREW RIGS DOWN PUMP AND IRON
17:00	Depart Location					BJ SERVICES CREW DEPARTS LOCATION
	Other					SPACER TO SURFACE - 40 BBL
	Other					CEMENT TO SURFACE - 140 BBL

Customer: Captiva
Well Number: 6
Lease Info: Stillroven Farm



Print Date/Time
2/25/2018 3:54:06 PM



	Name	Y value	X value/time stamp	Tag name Y
1	PS - Press (PSI)	-41.2 i.	2/25/2018 3:08:30 PM i.	Cementer\PS_DISCHARGE_PRESS_DIAL
2	Den2 - Discharge Density (PPG)	7.94	2/25/2018 3:08:33 PM	Cementer\DENSITY2_ACTUAL_RATE
3	Down Hole Total (BBLS)	0.3	2/25/2018 3:08:33 PM	Cementer\DOWNHOLE_FLOW_TOTAL
4	Combined Rate (BPM)	1.56	2/25/2018 3:08:33 PM	Cementer\Flow_Combined
5				

Source: Control1 3:54:01 PM