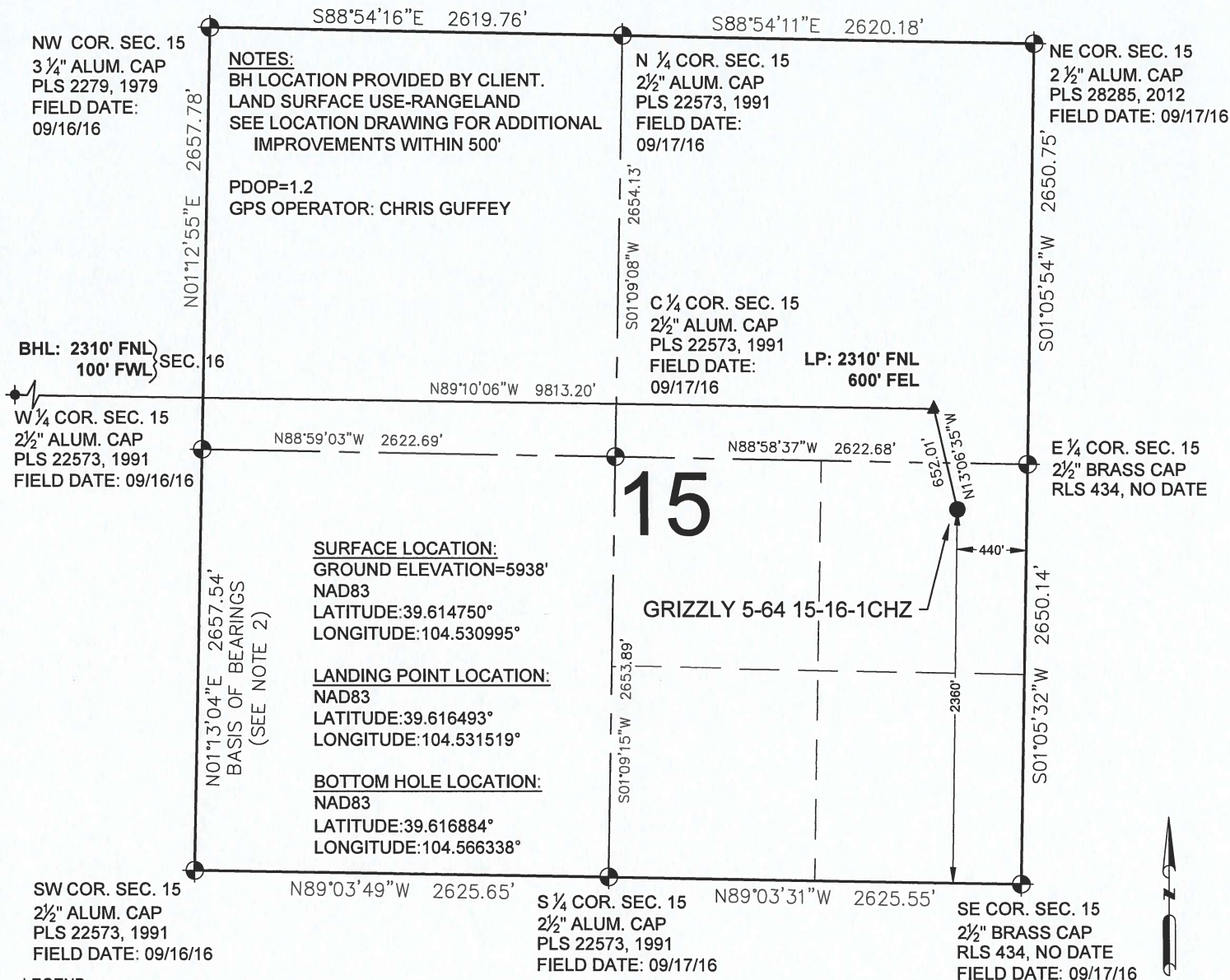


# GRIZZLY 5-64 15-16-1CHZ WELL LOCATION CERTIFICATE



## WELL GRIZZLY 5-64 15-16-1CHZ TO BE LOCATED 2360' FSL & 440' FEL

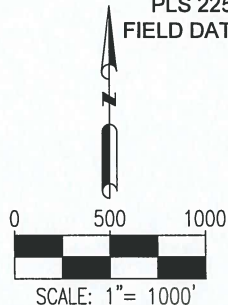
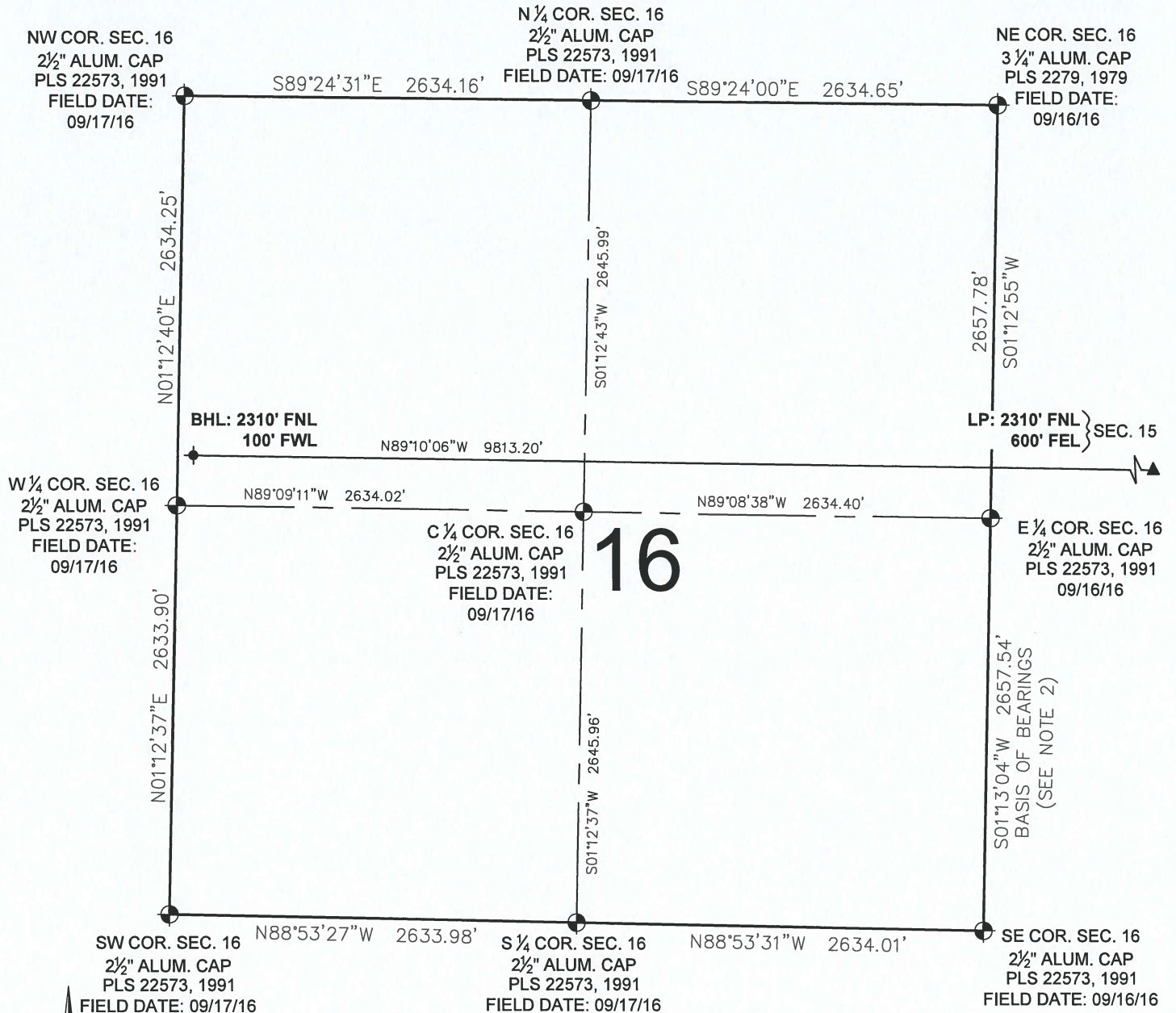
I, BRIAN C. RITZ, A LICENSED PROFESSIONAL LAND SURVEYOR IN THE STATE OF COLORADO DO HEREBY CERTIFY TO **HIGHLANDS NATURAL RESOURCES, CORPORATION**, THAT THE SURVEY AND WELL LOCATION CERTIFICATE SHOWN HEREON WERE DONE BY ME OR UNDER MY DIRECT SUPERVISION AND THAT THE DRAWING SHOWN HEREON ACCURATELY DEPICTS THE PROPOSED LOCATION OF THE WELL. THIS CERTIFICATE DOES NOT REPRESENT A LAND SURVEY PLAT OR IMPROVEMENT SURVEY PLAT AS DEFINED BY C.R.S. 38-51-102 AND CANNOT BE RELIED UPON TO DETERMINE OWNERSHIP.

BRIAN C. RITZ, PLS 38452  
COLORADO LICENSED PROFESSIONAL LAND SURVEYOR  
FOR AND ON BEHALF OF P.F.S., LLC



SHEET 1 OF 2

# GRIZZLY 5-64 15-16-1CHZ WELL LOCATION CERTIFICATE



## LEGEND

- ⊕ = EXISTING MONUMENT
- = CALCULATED POSITION
- = PROPOSED WELL
- ◆ = EXISTING WELL
- ⬮ = BOTTOM HOLE
- ▲ = LANDING POINT
- LP = LANDING POINT
- BHL = BOTTOM HOLE LOCATION

BRIAN C. RITZ, PLS 38452  
COLORADO LICENSED PROFESSIONAL LAND SURVEYOR  
FOR AND ON BEHALF OF P.F.S., LLC



SHEET 2 OF 2