

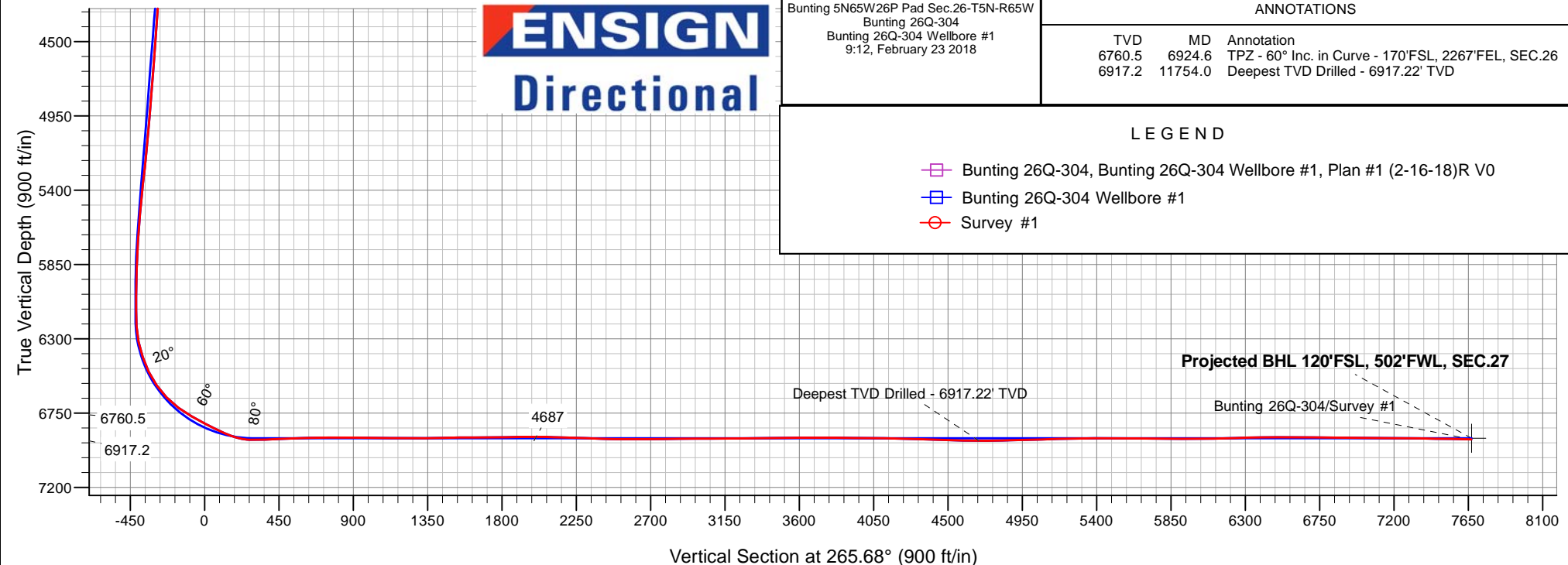
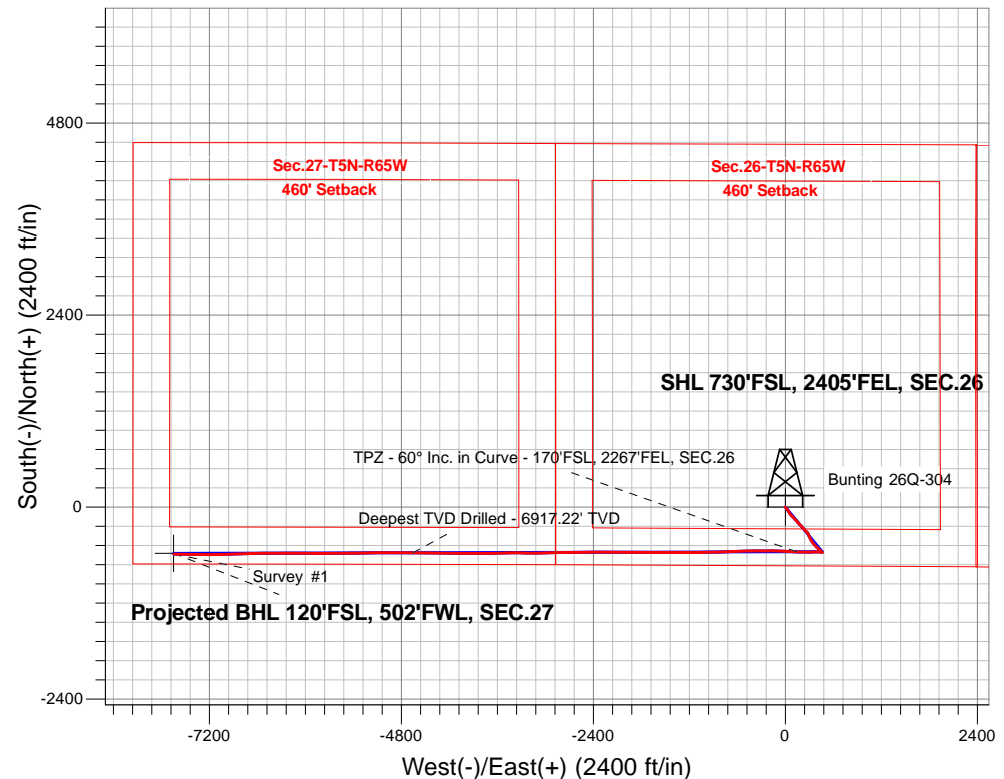
PDC Energy Inc. DJ Basin

Well Name: **Bunting 26Q-304**

Surface Location: Bunting 5N65W26P Pad Sec.26-T5N-R65W
North American Datum 1983 , US State Plane 1983, Colorado Northern Zone
Ground Elevation: 4649.0
+N/-S+E/-W Northing Easting Latitude Longitude Slot
0.0 0.0 877007.6 8242531.03 40.365020 -104.629620
Original Well Elev WELL @ 4672.0ft (Original Well Elev)

FINAL SURVEY

Projected Bottom Hole Location
14,743'MD 6908'TVD 589'S & 7645'W of SHL
89.0 degree Incl @ 270.9 degree AZM





PDC Energy Inc. DJ Basin

SEC.26-T5N-R65W

Bunting 5N65W26P Pad Sec.26-T5N-R65W

Bunting 26Q-304

Bunting 26Q-304 Wellbore #1

Survey: Survey #1

Standard Survey Report

23 February, 2018

Company:	PDC Energy Inc. DJ Basin	Local Co-ordinate Reference:	Well Bunting 26Q-304
Project:	SEC.26-T5N-R65W	TVD Reference:	WELL @ 4672.0ft (Original Well Elev)
Site:	Bunting 5N65W26P Pad Sec.26-T5N-R65W	MD Reference:	WELL @ 4672.0ft (Original Well Elev)
Well:	Bunting 26Q-304	North Reference:	True
Wellbore:	Bunting 26Q-304 Wellbore #1	Survey Calculation Method:	Minimum Curvature
Design:	Bunting 26Q-304 Wellbore #1	Database:	US_EDM

Project	SEC.26-T5N-R65W, Weld County, CO		
Map System:	US State Plane 1983	System Datum:	Mean Sea Level
Geo Datum:	North American Datum 1983		Using Well Reference Point
Map Zone:	Colorado Northern Zone		Using geodetic scale factor

Site	Bunting 5N65W26P Pad Sec.26-T5N-R65W				
Site Position:		Northing:	1,377,186.11 usft	Latitude:	40.365510
From:	Lat/Long	Easting:	3,242,529.28 usft	Longitude:	-104.629620
Position Uncertainty:	0.0 ft	Slot Radius:	13-3/16 "	Grid Convergence:	0.56 °

Well	Bunting 26Q-304					
Well Position	+N/-S	0.0 ft	Northing:	1,377,007.61 usft	Latitude:	40.365020
	+E/-W	0.0 ft	Easting:	3,242,531.03 usft	Longitude:	-104.629620
Position Uncertainty		0.0 ft	Wellhead Elevation:	0.0 ft	Ground Level:	4,649.0 ft

Wellbore	Bunting 26Q-304 Wellbore #1				
Magnetics	Model Name	Sample Date	Declination (°)	Dip Angle (°)	Field Strength (nT)
	IGRF2010	2/16/2018	7.89	66.81	52,425

Design	Bunting 26Q-304 Wellbore #1				
Audit Notes:					
Version:	1.0	Phase:	ACTUAL	Tie On Depth:	0.0
Vertical Section:	Depth From (TVD) (ft)	+N/-S (ft)	+E/-W (ft)	Direction (°)	
	0.0	0.0	0.0	265.68	

Survey Program	Date	2/23/2018			
From (ft)	To (ft)	Survey (Wellbore)	Tool Name	Description	
154.0	14,743.0	Survey #1 (Bunting 26Q-304 Wellbore #1)	MWD	MWD - Standard	

Survey										
Measured Depth (ft)	Inclination (°)	Azimuth (°)	Vertical Depth (ft)	+N/-S (ft)	+E/-W (ft)	Vertical Section (ft)	Dogleg Rate (°/100usft)	Build Rate (°/100usft)	Turn Rate (°/100usft)	
0.0	0.00	0.00	0.0	0.0	0.0	0.0	0.00	0.00	0.00	
1.0	0.00	197.60	1.0	0.0	0.0	0.0	0.26	0.26	0.00	
SHL 730'FSL, 2405'FEL, SEC.26										
154.0	0.40	197.60	154.0	-0.5	-0.2	0.2	0.26	0.26	0.00	
249.0	1.60	154.80	249.0	-2.0	0.3	-0.1	1.40	1.26	-45.05	
345.0	2.00	151.30	344.9	-4.7	1.7	-1.3	0.43	0.42	-3.65	
440.0	4.10	144.50	439.8	-8.9	4.4	-3.8	2.24	2.21	-7.16	
536.0	5.50	142.70	535.5	-15.4	9.2	-8.0	1.47	1.46	-1.88	
632.0	6.30	142.90	630.9	-23.2	15.2	-13.4	0.83	0.83	0.21	
727.0	8.20	139.90	725.2	-32.6	22.7	-20.2	2.04	2.00	-3.16	
823.0	8.30	142.00	820.2	-43.3	31.4	-28.0	0.33	0.10	2.19	

Company:	PDC Energy Inc. DJ Basin	Local Co-ordinate Reference:	Well Bunting 26Q-304
Project:	SEC.26-T5N-R65W	TVD Reference:	WELL @ 4672.0ft (Original Well Elev)
Site:	Bunting 5N65W26P Pad Sec.26-T5N-R65W	MD Reference:	WELL @ 4672.0ft (Original Well Elev)
Well:	Bunting 26Q-304	North Reference:	True
Wellbore:	Bunting 26Q-304 Wellbore #1	Survey Calculation Method:	Minimum Curvature
Design:	Bunting 26Q-304 Wellbore #1	Database:	US_EDM

Survey									
Measured Depth (ft)	Inclination (°)	Azimuth (°)	Vertical Depth (ft)	+N/-S (ft)	+E/-W (ft)	Vertical Section (ft)	Dogleg Rate (°/100usft)	Build Rate (°/100usft)	Turn Rate (°/100usft)
919.0	8.10	145.90	915.2	-54.3	39.4	-35.2	0.62	-0.21	4.06
1,014.0	7.60	150.60	1,009.3	-65.4	46.3	-41.2	0.86	-0.53	4.95
1,110.0	7.90	149.20	1,104.4	-76.6	52.8	-46.8	0.37	0.31	-1.46
1,206.0	8.50	143.90	1,199.5	-88.0	60.3	-53.5	1.00	0.63	-5.52
1,302.0	8.60	140.80	1,294.4	-99.3	69.0	-61.4	0.49	0.10	-3.23
1,397.0	8.40	136.70	1,388.4	-109.8	78.3	-69.8	0.67	-0.21	-4.32
1,492.0	7.10	131.80	1,482.5	-118.8	87.4	-78.2	1.53	-1.37	-5.16
1,587.0	6.00	134.80	1,576.9	-126.2	95.3	-85.5	1.21	-1.16	3.16
1,680.0	4.70	132.20	1,669.5	-132.2	101.6	-91.3	1.42	-1.40	-2.80
1,775.0	7.20	141.70	1,763.9	-139.5	108.2	-97.4	2.82	2.63	10.00
1,871.0	7.20	138.30	1,859.2	-148.7	115.9	-104.4	0.44	0.00	-3.54
1,966.0	7.20	135.90	1,953.4	-157.4	124.0	-111.8	0.32	0.00	-2.53
2,062.0	6.60	134.80	2,048.7	-165.6	132.1	-119.2	0.64	-0.63	-1.15
2,158.0	7.90	139.90	2,144.0	-174.5	140.3	-126.7	1.51	1.35	5.31
2,253.0	9.10	139.70	2,237.9	-185.3	149.3	-134.9	1.26	1.26	-0.21
2,348.0	8.80	138.70	2,331.8	-196.4	159.0	-143.7	0.36	-0.32	-1.05
2,443.0	8.20	136.70	2,425.7	-206.8	168.4	-152.4	0.70	-0.63	-2.11
2,538.0	7.70	136.00	2,519.8	-216.3	177.5	-160.7	0.54	-0.53	-0.74
2,634.0	7.50	134.50	2,615.0	-225.4	186.4	-168.9	0.29	-0.21	-1.56
2,730.0	9.10	139.90	2,710.0	-235.6	195.8	-177.5	1.85	1.67	5.63
2,825.0	9.10	139.40	2,803.8	-247.0	205.5	-186.3	0.08	0.00	-0.53
2,921.0	8.90	137.60	2,898.6	-258.3	215.5	-195.4	0.36	-0.21	-1.88
3,017.0	8.60	136.40	2,993.5	-268.9	225.4	-204.5	0.37	-0.31	-1.25
3,113.0	9.60	141.10	3,088.3	-280.4	235.4	-213.6	1.30	1.04	4.90
3,209.0	8.50	137.60	3,183.1	-291.8	245.2	-222.5	1.28	-1.15	-3.65
3,305.0	7.70	135.00	3,278.1	-301.6	254.5	-231.1	0.92	-0.83	-2.71
3,401.0	6.50	130.80	3,373.4	-309.7	263.2	-239.1	1.36	-1.25	-4.38
3,496.0	5.60	131.30	3,467.8	-316.3	270.8	-246.2	0.95	-0.95	0.53
3,592.0	4.90	134.10	3,563.4	-322.2	277.2	-252.1	0.78	-0.73	2.92
3,688.0	6.10	162.20	3,659.0	-329.9	281.7	-256.1	3.03	1.25	29.27
3,783.0	6.00	161.70	3,753.5	-339.5	284.8	-258.4	0.12	-0.11	-0.53
3,879.0	7.20	154.10	3,848.8	-349.6	289.0	-261.9	1.54	1.25	-7.92
3,974.0	7.30	149.70	3,943.1	-360.2	294.7	-266.7	0.59	0.11	-4.63
4,071.0	8.50	155.50	4,039.2	-372.1	300.8	-271.9	1.48	1.24	5.98
4,166.0	8.20	153.60	4,133.2	-384.5	306.7	-276.8	0.43	-0.32	-2.00
4,262.0	7.90	157.50	4,228.2	-396.7	312.3	-281.5	0.65	-0.31	4.06
4,357.0	9.00	151.50	4,322.2	-409.3	318.3	-286.5	1.48	1.16	-6.32
4,453.0	8.90	149.60	4,417.0	-422.3	325.6	-292.9	0.33	-0.10	-1.98
4,549.0	8.70	143.90	4,511.9	-434.6	333.7	-300.0	0.93	-0.21	-5.94
4,644.0	7.90	142.50	4,605.9	-445.6	341.9	-307.3	0.87	-0.84	-1.47
4,740.0	7.00	142.20	4,701.1	-455.4	349.5	-314.2	0.94	-0.94	-0.31
4,836.0	6.90	139.20	4,796.4	-464.4	356.8	-320.8	0.39	-0.10	-3.13
4,931.0	8.70	139.70	4,890.5	-474.2	365.2	-328.4	1.90	1.89	0.53

Company:	PDC Energy Inc. DJ Basin	Local Co-ordinate Reference:	Well Bunting 26Q-304
Project:	SEC.26-T5N-R65W	TVD Reference:	WELL @ 4672.0ft (Original Well Elev)
Site:	Bunting 5N65W26P Pad Sec.26-T5N-R65W	MD Reference:	WELL @ 4672.0ft (Original Well Elev)
Well:	Bunting 26Q-304	North Reference:	True
Wellbore:	Bunting 26Q-304 Wellbore #1	Survey Calculation Method:	Minimum Curvature
Design:	Bunting 26Q-304 Wellbore #1	Database:	US_EDM

Survey									
Measured Depth (ft)	Inclination (°)	Azimuth (°)	Vertical Depth (ft)	+N/-S (ft)	+E/-W (ft)	Vertical Section (ft)	Dogleg Rate (°/100usft)	Build Rate (°/100usft)	Turn Rate (°/100usft)
5,027.0	8.40	138.50	4,985.4	-485.0	374.6	-336.9	0.36	-0.31	-1.25
5,123.0	8.10	131.60	5,080.4	-494.7	384.3	-345.9	1.08	-0.31	-7.19
5,219.0	8.10	137.40	5,175.5	-504.2	393.9	-354.8	0.85	0.00	6.04
5,315.0	9.20	132.50	5,270.4	-514.4	404.1	-364.2	1.38	1.15	-5.10
5,410.0	8.60	131.30	5,364.2	-524.2	415.1	-374.4	0.66	-0.63	-1.26
5,506.0	7.80	132.20	5,459.3	-533.3	425.3	-383.9	0.84	-0.83	0.94
5,602.0	7.70	134.80	5,554.4	-542.2	434.7	-392.6	0.38	-0.10	2.71
5,698.0	7.00	136.20	5,649.6	-551.0	443.3	-400.5	0.75	-0.73	1.46
5,794.0	4.60	140.30	5,745.1	-558.2	449.8	-406.4	2.54	-2.50	4.27
5,890.0	2.90	129.70	5,840.9	-562.7	454.1	-410.4	1.91	-1.77	-11.04
5,985.0	2.60	135.00	5,935.8	-565.7	457.5	-413.6	0.41	-0.32	5.58
6,081.0	0.00	0.00	6,031.7	-567.3	459.0	-415.0	2.71	-2.71	0.00
6,177.0	0.40	149.40	6,127.7	-567.6	459.2	-415.1	0.42	0.42	0.00
6,273.0	2.80	279.50	6,223.7	-567.5	457.1	-413.0	3.20	2.50	135.52
6,368.0	12.20	277.90	6,317.8	-565.7	444.8	-400.9	9.90	9.89	-1.68
6,464.0	18.90	276.50	6,410.2	-562.5	419.3	-375.7	6.99	6.98	-1.46
6,560.0	25.20	268.40	6,499.2	-561.3	383.4	-340.0	7.27	6.56	-8.44
6,655.0	35.30	266.80	6,581.1	-563.4	335.6	-292.2	10.66	10.63	-1.68
6,751.0	43.60	269.30	6,655.2	-565.4	274.7	-231.3	8.80	8.65	2.60
6,847.0	54.10	273.30	6,718.3	-563.6	202.6	-159.5	11.37	10.94	4.17
6,924.6	60.00	273.05	6,760.5	-560.0	137.6	-95.0	7.61	7.60	-0.32
TPZ - 60° Inc. in Curve - 170°FSL, 2267°FEL, SEC.26									
6,943.0	61.40	273.00	6,769.5	-559.1	121.6	-79.1	7.61	7.60	-0.29
7,038.0	61.90	272.60	6,814.6	-555.0	38.1	3.9	0.64	0.53	-0.42
7,134.0	64.70	271.60	6,857.7	-551.9	-47.6	89.1	3.06	2.92	-1.04
7,230.0	71.40	270.00	6,893.6	-550.7	-136.6	177.7	7.15	6.98	-1.67
7,325.0	86.70	271.00	6,911.6	-549.8	-229.6	270.4	16.14	16.11	1.05
7,349.0	88.57	270.83	6,912.6	-549.5	-253.5	294.2	7.85	7.81	-0.73
LPL 168°FSL, 2612°FEL, SEC.26									
7,421.0	94.20	270.30	6,910.8	-548.8	-325.5	366.0	7.85	7.81	-0.73
7,517.0	91.60	268.70	6,906.0	-549.6	-421.4	461.6	3.18	-2.71	-1.67
7,642.0	92.30	268.60	6,901.7	-552.5	-546.3	586.4	0.57	0.56	-0.08
7,737.0	91.20	267.70	6,898.8	-555.6	-641.2	681.2	1.50	-1.16	-0.95
7,833.0	90.10	267.20	6,897.7	-559.9	-737.1	777.2	1.26	-1.15	-0.52
7,929.0	88.90	268.20	6,898.6	-563.7	-833.0	873.1	1.63	-1.25	1.04
8,024.0	89.30	269.80	6,900.1	-565.4	-928.0	967.9	1.74	0.42	1.68
8,119.0	89.30	269.10	6,901.2	-566.3	-1,023.0	1,062.7	0.74	0.00	-0.74
8,215.0	90.00	268.70	6,901.8	-568.1	-1,118.9	1,158.6	0.84	0.73	-0.42
8,310.0	90.30	270.70	6,901.6	-568.6	-1,213.9	1,253.3	2.13	0.32	2.11
8,406.0	90.70	270.50	6,900.7	-567.6	-1,309.9	1,349.0	0.47	0.42	-0.21
8,502.0	91.10	269.60	6,899.2	-567.5	-1,405.9	1,444.7	1.03	0.42	-0.94
8,598.0	90.30	270.70	6,898.0	-567.3	-1,501.9	1,540.4	1.42	-0.83	1.15
8,693.0	90.20	270.30	6,897.6	-566.5	-1,596.9	1,635.0	0.43	-0.11	-0.42
8,789.0	90.60	269.50	6,897.0	-566.6	-1,692.9	1,730.8	0.93	0.42	-0.83

Company:	PDC Energy Inc. DJ Basin	Local Co-ordinate Reference:	Well Bunting 26Q-304
Project:	SEC.26-T5N-R65W	TVD Reference:	WELL @ 4672.0ft (Original Well Elev)
Site:	Bunting 5N65W26P Pad Sec.26-T5N-R65W	MD Reference:	WELL @ 4672.0ft (Original Well Elev)
Well:	Bunting 26Q-304	North Reference:	True
Wellbore:	Bunting 26Q-304 Wellbore #1	Survey Calculation Method:	Minimum Curvature
Design:	Bunting 26Q-304 Wellbore #1	Database:	US_EDM

Survey									
Measured Depth (ft)	Inclination (°)	Azimuth (°)	Vertical Depth (ft)	+N/-S (ft)	+E/-W (ft)	Vertical Section (ft)	Dogleg Rate (°/100usft)	Build Rate (°/100usft)	Turn Rate (°/100usft)
8,884.0	90.80	269.10	6,895.8	-567.8	-1,787.9	1,825.6	0.47	0.21	-0.42
8,980.0	90.70	270.50	6,894.5	-568.1	-1,883.9	1,921.3	1.46	-0.10	1.46
9,076.0	89.80	270.00	6,894.1	-567.7	-1,979.9	2,017.0	1.07	-0.94	-0.52
9,171.0	88.40	271.00	6,895.6	-566.9	-2,074.8	2,111.7	1.81	-1.47	1.05
9,267.0	88.10	270.70	6,898.6	-565.5	-2,170.8	2,207.2	0.44	-0.31	-0.31
9,363.0	88.00	270.30	6,901.8	-564.6	-2,266.7	2,302.8	0.43	-0.10	-0.42
9,458.0	87.80	270.20	6,905.3	-564.2	-2,361.7	2,397.5	0.24	-0.21	-0.11
9,554.0	89.50	270.50	6,907.6	-563.6	-2,457.6	2,493.1	1.80	1.77	0.31
9,649.0	90.00	270.00	6,908.0	-563.2	-2,552.6	2,587.8	0.74	0.53	-0.53
9,745.0	90.50	269.10	6,907.6	-564.0	-2,648.6	2,683.6	1.07	0.52	-0.94
9,840.0	90.70	268.60	6,906.6	-565.9	-2,743.6	2,778.4	0.57	0.21	-0.53
9,936.0	91.00	268.00	6,905.1	-568.7	-2,839.5	2,874.3	0.70	0.31	-0.63
10,032.0	90.00	268.70	6,904.3	-571.5	-2,935.5	2,970.2	1.27	-1.04	0.73
10,128.0	90.30	267.70	6,904.0	-574.5	-3,031.4	3,066.1	1.09	0.31	-1.04
10,224.0	90.60	269.80	6,903.3	-576.6	-3,127.4	3,162.0	2.21	0.31	2.19
10,320.0	90.30	271.00	6,902.5	-575.9	-3,223.4	3,257.7	1.29	-0.31	1.25
10,416.0	90.10	270.70	6,902.2	-574.5	-3,319.4	3,353.3	0.38	-0.21	-0.31
10,511.0	90.70	269.80	6,901.5	-574.1	-3,414.4	3,448.0	1.14	0.63	-0.95
10,607.0	91.00	269.30	6,900.1	-574.8	-3,510.4	3,543.7	0.61	0.31	-0.52
10,702.0	90.30	270.30	6,899.0	-575.2	-3,605.4	3,638.5	1.28	-0.74	1.05
10,798.0	90.40	269.50	6,898.5	-575.3	-3,701.4	3,734.2	0.84	0.10	-0.83
10,894.0	89.10	269.80	6,898.9	-575.9	-3,797.4	3,830.0	1.39	-1.35	0.31
10,990.0	89.20	268.60	6,900.3	-577.3	-3,893.3	3,925.8	1.25	0.10	-1.25
11,085.0	89.30	267.90	6,901.5	-580.2	-3,988.3	4,020.7	0.74	0.11	-0.74
11,181.0	89.50	269.60	6,902.5	-582.3	-4,084.3	4,116.5	1.78	0.21	1.77
11,277.0	88.20	271.70	6,904.5	-581.2	-4,180.2	4,212.1	2.57	-1.35	2.19
11,373.0	88.10	270.90	6,907.6	-579.0	-4,276.1	4,307.6	0.84	-0.10	-0.83
11,468.0	88.30	270.50	6,910.6	-577.8	-4,371.1	4,402.2	0.47	0.21	-0.42
11,563.0	88.20	270.00	6,913.5	-577.4	-4,466.0	4,496.9	0.54	-0.11	-0.53
11,659.0	88.40	271.20	6,916.3	-576.4	-4,562.0	4,592.5	1.27	0.21	1.25
11,754.0	90.50	272.10	6,917.2	-573.7	-4,656.9	4,686.9	2.40	2.21	0.95
Deepest TVD Drilled - 6917.22' TVD									
11,849.0	90.90	271.40	6,916.1	-570.8	-4,751.9	4,781.4	0.85	0.42	-0.74
11,945.0	91.30	270.70	6,914.2	-569.0	-4,847.9	4,877.0	0.84	0.42	-0.73
12,040.0	91.50	270.00	6,911.9	-568.4	-4,942.8	4,971.6	0.77	0.21	-0.74
12,135.0	91.70	269.50	6,909.2	-568.8	-5,037.8	5,066.3	0.57	0.21	-0.53
12,231.0	92.40	268.70	6,905.8	-570.4	-5,133.7	5,162.1	1.11	0.73	-0.83
12,326.0	90.10	268.60	6,903.7	-572.6	-5,228.7	5,256.9	2.42	-2.42	-0.11
12,421.0	90.60	268.40	6,903.2	-575.1	-5,323.6	5,351.8	0.57	0.53	-0.21
12,516.0	90.60	269.30	6,902.2	-577.0	-5,418.6	5,446.7	0.95	0.00	0.95
12,612.0	89.20	270.00	6,902.3	-577.6	-5,514.6	5,542.4	1.63	-1.46	0.73
12,707.0	89.30	269.30	6,903.6	-578.2	-5,609.6	5,637.2	0.74	0.11	-0.74
12,802.0	89.40	268.90	6,904.6	-579.6	-5,704.6	5,732.0	0.43	0.11	-0.42

Company:	PDC Energy Inc. DJ Basin	Local Co-ordinate Reference:	Well Bunting 26Q-304
Project:	SEC.26-T5N-R65W	TVD Reference:	WELL @ 4672.0ft (Original Well Elev)
Site:	Bunting 5N65W26P Pad Sec.26-T5N-R65W	MD Reference:	WELL @ 4672.0ft (Original Well Elev)
Well:	Bunting 26Q-304	North Reference:	True
Wellbore:	Bunting 26Q-304 Wellbore #1	Survey Calculation Method:	Minimum Curvature
Design:	Bunting 26Q-304 Wellbore #1	Database:	US_EDM

Survey										
Measured Depth (ft)	Inclination (°)	Azimuth (°)	Vertical Depth (ft)	+N/-S (ft)	+E/-W (ft)	Vertical Section (ft)	Dogleg Rate (°/100usft)	Build Rate (°/100usft)	Turn Rate (°/100usft)	
12,898.0	90.00	270.00	6,905.1	-580.6	-5,800.6	5,827.8	1.31	0.63	1.15	
12,993.0	89.90	271.20	6,905.2	-579.6	-5,895.6	5,922.5	1.27	-0.11	1.26	
13,089.0	90.40	270.70	6,905.0	-578.0	-5,991.5	6,018.1	0.74	0.52	-0.52	
13,185.0	91.00	270.20	6,903.8	-577.2	-6,087.5	6,113.7	0.81	0.63	-0.52	
13,281.0	91.40	269.40	6,901.8	-577.6	-6,183.5	6,209.5	0.93	0.42	-0.83	
13,377.0	91.80	268.90	6,899.1	-579.0	-6,279.5	6,305.2	0.67	0.42	-0.52	
13,472.0	91.10	270.70	6,896.7	-579.3	-6,374.4	6,400.0	2.03	-0.74	1.89	
13,568.0	89.60	270.00	6,896.1	-578.7	-6,470.4	6,495.6	1.72	-1.56	-0.73	
13,664.0	89.70	269.50	6,896.7	-579.1	-6,566.4	6,591.4	0.53	0.10	-0.52	
13,759.0	89.70	268.60	6,897.2	-580.7	-6,661.4	6,686.2	0.95	0.00	-0.95	
13,855.0	89.60	268.20	6,897.8	-583.4	-6,757.4	6,782.1	0.43	-0.10	-0.42	
13,951.0	89.70	267.30	6,898.4	-587.2	-6,853.3	6,878.0	0.94	0.10	-0.94	
14,047.0	88.50	268.40	6,899.9	-590.8	-6,949.2	6,974.0	1.70	-1.25	1.15	
14,142.0	90.00	269.30	6,901.1	-592.7	-7,044.2	7,068.8	1.84	1.58	0.95	
14,238.0	90.10	268.60	6,901.1	-594.4	-7,140.2	7,164.6	0.74	0.10	-0.73	
14,334.0	89.20	270.90	6,901.6	-594.9	-7,236.1	7,260.4	2.57	-0.94	2.40	
14,430.0	88.90	270.30	6,903.2	-593.9	-7,332.1	7,356.0	0.70	-0.31	-0.63	
14,525.0	89.30	271.20	6,904.7	-592.6	-7,427.1	7,450.6	1.04	0.42	0.95	
14,621.0	88.90	271.20	6,906.2	-590.6	-7,523.1	7,546.2	0.42	-0.42	0.00	
14,683.0	89.00	270.90	6,907.4	-589.5	-7,585.0	7,607.9	0.51	0.16	-0.48	
14,743.0	89.00	270.90	6,908.4	-588.5	-7,645.0	7,667.6	0.00	0.00	0.00	
BHL 130°FSL, 500'FWL, SEC.27										

Design Targets										
Target Name	Dip Angle (°)	Dip Dir. (°)	TVD (ft)	+N/-S (ft)	+E/-W (ft)	Northing (usft)	Easting (usft)	Latitude	Longitude	
- hit/miss target										
- Shape										
SHL 730°FSL, 2405'FEL	0.00	0.00	1.0	0.0	0.0	1,377,007.62	3,242,531.03	40.365020	-104.629620	
- survey hits target center										
- Point										
BHL 130°FSL, 500'FWL,	0.00	0.00	6,902.0	-578.1	-7,646.8	1,376,354.55	3,234,890.63	40.363430	-104.657060	
- survey misses target center by 12.4ft at 14743.0ft MD (6908.4 TVD, -588.5 N, -7645.0 E)										
- Point										

Survey Annotations					
Measured Depth (ft)	Vertical Depth (ft)	Local Coordinates			
		+N/-S (ft)	+E/-W (ft)	Comment	
6,924.6	6,760.5	-560.0	137.6	TPZ - 60° Inc. in Curve - 170°FSL, 2267'FEL, SEC.26	
11,754.0	6,917.2	-573.7	-4,656.9	Deepest TVD Drilled - 6917.22' TVD	

Checked By: _____ Approved By: _____ Date: _____