

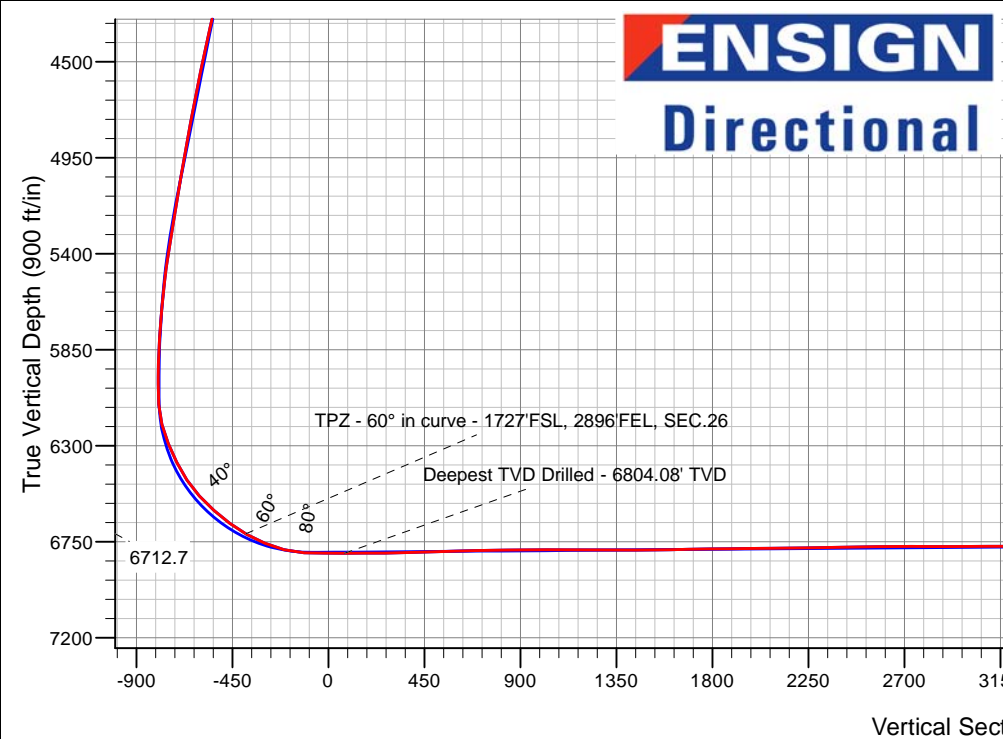
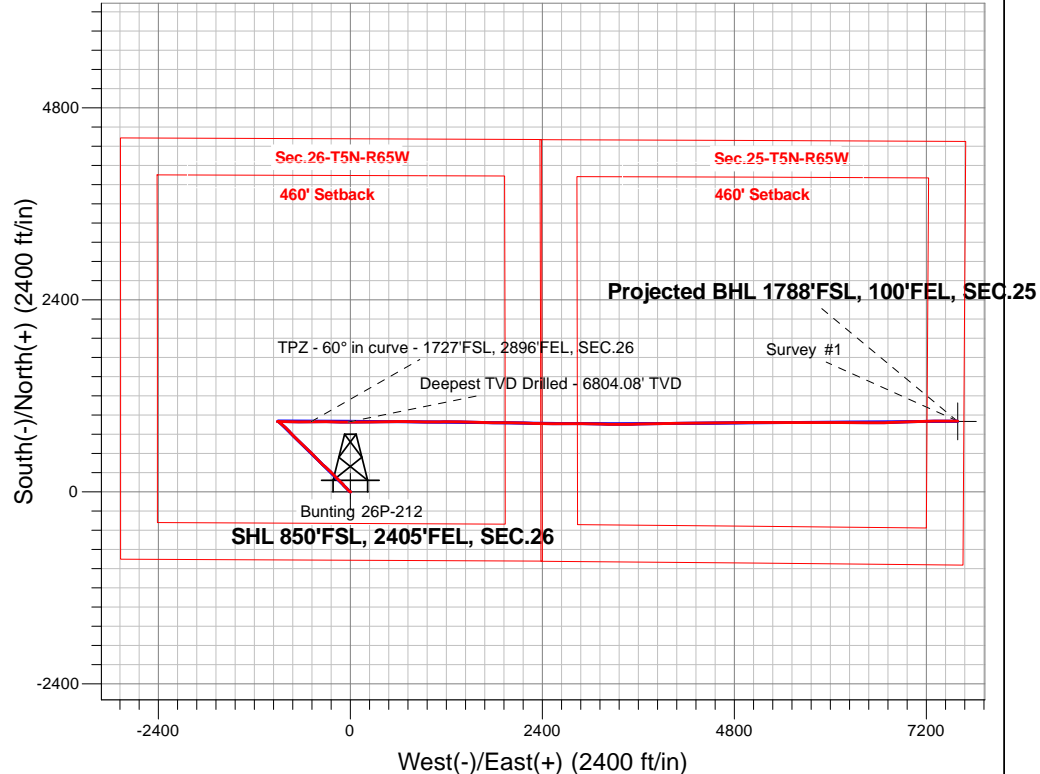
PDC Energy Inc. DJ Basin

Well Name: **Bunting 26P-212**

Surface Location: Bunting 5N65W26P Pad Sec.26-T5N-R65W
 North American Datum 1983 , US State Plane 1983, Colorado Northern Zone
 Ground Elevation: 4649.0
 +N/-S+E/-W Northing Easting Latitude Longitude Slot
 0.0 0.0 1377127.823242529.85 40.365350 -104.629620
 Original Well Elev WELL @ 4672.0ft (Original Well Elev)

FINAL SURVEY

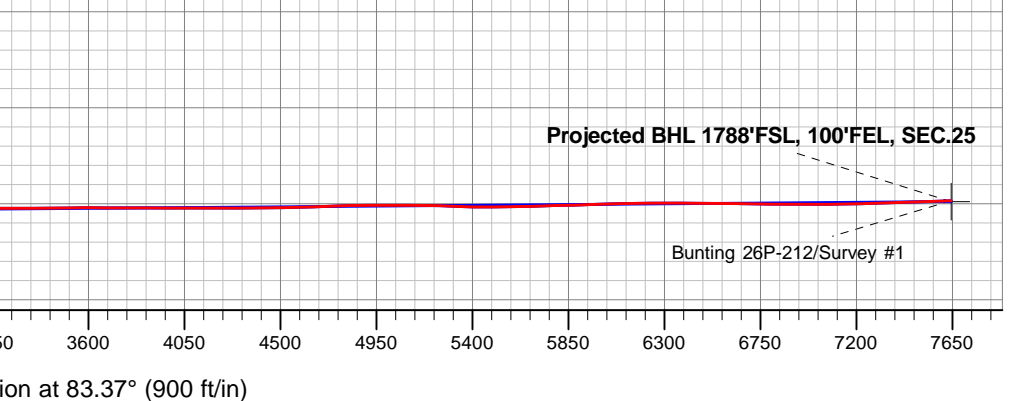
Projected Bottom Hole Location
15,155'MD 6736'TVD 885'N & 7593'E of SHL
91.8 degree Incl @ 89.50 degree AZM



Bunting 5N65W26P Pad Sec.26-T5N-R65W
 Bunting 26P-212
 Bunting 26P-212 Wellbore #1
 7:30, December 21 2017

ANNOTATIONS		
TVD	MD	Annotation
6712.7	7051.7	TPZ - 60° in curve - 1727' FSL, 2896' FEL, SEC. 26
6804.1	7534.0	Deepest TVD Drilled - 6804.08' TVD

LEGEND	
	Bunting 26P-212, Bunting 26P-212 Wellbore #1, Plan #3 (12-13-17) V0
	Bunting 26P-212 Wellbore #1
	Survey #1





PDC Energy Inc. DJ Basin

SEC.26-T5N-R65W

Bunting 5N65W26P Pad Sec.26-T5N-R65W

Bunting 26P-212

Bunting 26P-212 Wellbore #1

Survey: Survey #1

Standard Survey Report

21 December, 2017



Company:	PDC Energy Inc. DJ Basin	Local Co-ordinate Reference:	Well Bunting 26P-212
Project:	SEC.26-T5N-R65W	TVD Reference:	WELL @ 4672.0ft (Original Well Elev)
Site:	Bunting 5N65W26P Pad Sec.26-T5N-R65W	MD Reference:	WELL @ 4672.0ft (Original Well Elev)
Well:	Bunting 26P-212	North Reference:	True
Wellbore:	Bunting 26P-212 Wellbore #1	Survey Calculation Method:	Minimum Curvature
Design:	Bunting 26P-212 Wellbore #1	Database:	US_EDM

Project	SEC.26-T5N-R65W, Weld County, CO		
Map System:	US State Plane 1983	System Datum:	Mean Sea Level
Geo Datum:	North American Datum 1983		Using Well Reference Point
Map Zone:	Colorado Northern Zone		Using geodetic scale factor

Site	Bunting 5N65W26P Pad Sec.26-T5N-R65W				
Site Position:		Northing:	1,377,186.11 usft	Latitude:	40.365510
From:	Lat/Long	Easting:	3,242,529.28 usft	Longitude:	-104.629620
Position Uncertainty:	0.0 ft	Slot Radius:	13-3/16 "	Grid Convergence:	0.56 °

Well	Bunting 26P-212					
Well Position	+N/-S	0.0 ft	Northing:	1,377,127.82 usft	Latitude:	40.365350
	+E/-W	0.0 ft	Easting:	3,242,529.85 usft	Longitude:	-104.629620
Position Uncertainty		0.0 ft	Wellhead Elevation:	0.0 ft	Ground Level:	4,649.0 ft

Wellbore	Bunting 26P-212 Wellbore #1				
Magnetics	Model Name	Sample Date	Declination (°)	Dip Angle (°)	Field Strength (nT)
	IGRF2010	12/13/2017	7.91	66.82	52,444

Design	Bunting 26P-212 Wellbore #1				
Audit Notes:					
Version:	1.0	Phase:	ACTUAL	Tie On Depth:	0.0
Vertical Section:	Depth From (TVD) (ft)	+N/-S (ft)	+E/-W (ft)	Direction (°)	
	0.0	0.0	0.0	83.37	

Survey Program	Date	12/21/2017			
From (ft)	To (ft)	Survey (Wellbore)	Tool Name	Description	
153.0	15,155.0	Survey #1 (Bunting 26P-212 Wellbore #1)	MWD	MWD - Standard	

Survey										
Measured Depth (ft)	Inclination (°)	Azimuth (°)	Vertical Depth (ft)	+N/-S (ft)	+E/-W (ft)	Vertical Section (ft)	Dogleg Rate (°/100usft)	Build Rate (°/100usft)	Turn Rate (°/100usft)	
0.0	0.00	0.00	0.0	0.0	0.0	0.0	0.00	0.00	0.00	
1.0	0.00	96.70	1.0	0.0	0.0	0.0	0.39	0.39	0.00	
SHL 850'FSL, 2405'FEL, SEC.26										
153.0	0.60	96.70	153.0	-0.1	0.8	0.8	0.39	0.39	0.00	
248.0	0.70	106.30	248.0	-0.3	1.8	1.8	0.16	0.11	10.11	
344.0	0.80	126.40	344.0	-0.9	2.9	2.8	0.29	0.10	20.94	
439.0	0.70	71.50	439.0	-1.1	4.0	3.9	0.73	-0.11	-57.79	
535.0	0.30	359.80	535.0	-0.6	4.6	4.5	0.70	-0.42	-74.69	
631.0	0.20	339.40	631.0	-0.2	4.5	4.5	0.14	-0.10	-21.25	
726.0	0.60	314.60	726.0	0.3	4.1	4.1	0.45	0.42	-26.11	
822.0	0.60	303.10	822.0	0.9	3.3	3.4	0.13	0.00	-11.98	

Company:	PDC Energy Inc. DJ Basin	Local Co-ordinate Reference:	Well Bunting 26P-212
Project:	SEC.26-T5N-R65W	TVD Reference:	WELL @ 4672.0ft (Original Well Elev)
Site:	Bunting 5N65W26P Pad Sec.26-T5N-R65W	MD Reference:	WELL @ 4672.0ft (Original Well Elev)
Well:	Bunting 26P-212	North Reference:	True
Wellbore:	Bunting 26P-212 Wellbore #1	Survey Calculation Method:	Minimum Curvature
Design:	Bunting 26P-212 Wellbore #1	Database:	US_EDM

Survey									
Measured Depth (ft)	Inclination (°)	Azimuth (°)	Vertical Depth (ft)	+N/-S (ft)	+E/-W (ft)	Vertical Section (ft)	Dogleg Rate (°/100usft)	Build Rate (°/100usft)	Turn Rate (°/100usft)
918.0	0.50	156.60	918.0	0.8	3.1	3.2	1.10	-0.10	-152.60
1,013.0	1.90	307.10	1,012.9	1.4	2.0	2.1	2.47	1.47	158.42
1,109.0	3.20	297.60	1,108.9	3.6	-1.7	-1.2	1.42	1.35	-9.90
1,205.0	4.00	297.40	1,204.7	6.3	-7.0	-6.2	0.83	0.83	-0.21
1,301.0	4.90	309.80	1,300.4	10.5	-13.1	-11.8	1.37	0.94	12.92
1,396.0	6.30	311.90	1,394.9	16.6	-20.1	-18.1	1.49	1.47	2.21
1,491.0	6.20	315.70	1,489.4	23.7	-27.6	-24.7	0.45	-0.11	4.00
1,585.0	7.90	319.90	1,582.6	32.3	-35.3	-31.3	1.89	1.81	4.47
1,681.0	7.10	317.50	1,677.8	41.7	-43.5	-38.4	0.89	-0.83	-2.50
1,776.0	8.60	316.40	1,771.9	51.2	-52.4	-46.1	1.59	1.58	-1.16
1,872.0	10.60	314.10	1,866.6	62.5	-63.7	-56.1	2.12	2.08	-2.40
1,967.0	11.30	317.50	1,959.8	75.5	-76.3	-67.0	1.00	0.74	3.58
2,063.0	13.40	321.50	2,053.6	91.1	-89.5	-78.4	2.36	2.19	4.17
2,159.0	14.10	315.70	2,146.9	108.2	-104.6	-91.4	1.61	0.73	-6.04
2,254.0	14.90	310.30	2,238.9	124.4	-122.0	-106.9	1.65	0.84	-5.68
2,349.0	15.70	316.20	2,330.5	141.6	-140.3	-123.0	1.84	0.84	6.21
2,444.0	17.80	320.10	2,421.5	162.0	-158.5	-138.7	2.51	2.21	4.11
2,540.0	19.30	316.90	2,512.5	184.8	-178.7	-156.2	1.89	1.56	-3.33
2,635.0	20.80	314.50	2,601.7	208.1	-201.5	-176.1	1.80	1.58	-2.53
2,731.0	20.80	314.50	2,691.5	232.0	-225.8	-197.5	0.00	0.00	0.00
2,843.0	20.70	313.20	2,796.2	259.5	-254.4	-222.7	0.42	-0.09	-1.16
2,938.0	19.30	312.50	2,885.5	281.6	-278.2	-243.8	1.50	-1.47	-0.74
3,034.0	19.00	310.40	2,976.1	302.4	-301.8	-264.9	0.78	-0.31	-2.19
3,130.0	17.90	310.40	3,067.2	322.1	-325.0	-285.6	1.15	-1.15	0.00
3,226.0	17.70	314.10	3,158.6	341.9	-346.7	-304.9	1.20	-0.21	3.85
3,322.0	18.00	315.20	3,250.0	362.5	-367.6	-323.3	0.47	0.31	1.15
3,418.0	19.30	317.60	3,341.0	384.8	-388.8	-341.7	1.57	1.35	2.50
3,513.0	18.60	315.50	3,430.8	407.2	-410.0	-360.2	1.03	-0.74	-2.21
3,609.0	20.00	316.10	3,521.4	429.9	-432.1	-379.5	1.47	1.46	0.63
3,705.0	20.00	315.00	3,611.6	453.4	-455.1	-399.7	0.39	0.00	-1.15
3,801.0	20.00	314.30	3,701.8	476.4	-478.4	-420.2	0.25	0.00	-0.73
3,896.0	19.90	313.40	3,791.1	498.9	-501.8	-440.8	0.34	-0.11	-0.95
3,992.0	19.40	313.10	3,881.5	521.0	-525.3	-461.6	0.53	-0.52	-0.31
4,088.0	18.10	313.90	3,972.4	542.3	-547.7	-481.4	1.38	-1.35	0.83
4,183.0	17.40	314.50	4,062.9	562.4	-568.5	-499.7	0.76	-0.74	0.63
4,279.0	16.80	314.30	4,154.7	582.2	-588.6	-517.5	0.63	-0.63	-0.21
4,375.0	17.90	315.20	4,246.3	602.3	-609.0	-535.3	1.18	1.15	0.94
4,470.0	19.70	314.80	4,336.2	624.0	-630.6	-554.3	1.90	1.89	-0.42
4,566.0	18.90	314.00	4,426.8	646.2	-653.3	-574.3	0.88	-0.83	-0.83
4,662.0	17.90	312.70	4,517.9	667.0	-675.3	-593.8	1.13	-1.04	-1.35
4,757.0	16.90	310.80	4,608.6	685.9	-696.5	-612.6	1.21	-1.05	-2.00
4,853.0	17.30	319.60	4,700.4	705.9	-716.3	-630.0	2.72	0.42	9.17
4,949.0	18.10	317.80	4,791.8	727.8	-735.6	-646.6	1.01	0.83	-1.88

Company:	PDC Energy Inc. DJ Basin	Local Co-ordinate Reference:	Well Bunting 26P-212
Project:	SEC.26-T5N-R65W	TVD Reference:	WELL @ 4672.0ft (Original Well Elev)
Site:	Bunting 5N65W26P Pad Sec.26-T5N-R65W	MD Reference:	WELL @ 4672.0ft (Original Well Elev)
Well:	Bunting 26P-212	North Reference:	True
Wellbore:	Bunting 26P-212 Wellbore #1	Survey Calculation Method:	Minimum Curvature
Design:	Bunting 26P-212 Wellbore #1	Database:	US_EDM

Survey									
Measured Depth (ft)	Inclination (°)	Azimuth (°)	Vertical Depth (ft)	+N/-S (ft)	+E/-W (ft)	Vertical Section (ft)	Dogleg Rate (°/100usft)	Build Rate (°/100usft)	Turn Rate (°/100usft)
5,045.0	16.90	315.90	4,883.4	748.9	-755.3	-663.8	1.38	-1.25	-1.98
5,140.0	16.10	315.40	4,974.5	768.2	-774.2	-680.3	0.86	-0.84	-0.53
5,236.0	15.50	314.60	5,066.8	786.7	-792.6	-696.5	0.66	-0.63	-0.83
5,332.0	14.20	314.50	5,159.6	803.9	-810.2	-711.9	1.35	-1.35	-0.10
5,428.0	14.30	311.10	5,252.7	820.0	-827.5	-727.3	0.88	0.10	-3.54
5,523.0	13.10	311.00	5,345.0	834.8	-844.5	-742.4	1.26	-1.26	-0.11
5,620.0	11.80	311.30	5,439.7	848.5	-860.2	-756.5	1.34	-1.34	0.31
5,715.0	9.80	310.10	5,533.0	860.1	-873.7	-768.5	2.12	-2.11	-1.26
5,811.0	7.30	308.80	5,627.9	869.2	-884.7	-778.4	2.61	-2.60	-1.35
5,907.0	5.50	300.90	5,723.3	875.4	-893.4	-786.3	2.08	-1.88	-8.23
6,003.0	3.70	283.70	5,819.0	878.5	-900.4	-792.9	2.34	-1.88	-17.92
6,099.0	1.70	289.90	5,914.9	879.7	-904.7	-797.1	2.10	-2.08	6.46
6,194.0	0.60	161.20	6,009.9	879.7	-905.9	-798.2	2.24	-1.16	-135.47
6,290.0	3.50	101.80	6,105.8	878.7	-902.9	-795.3	3.37	3.02	-61.88
6,386.0	14.60	87.70	6,200.5	878.6	-887.8	-780.4	11.71	11.56	-14.69
6,481.0	22.10	88.40	6,290.6	879.5	-858.0	-750.7	7.90	7.89	0.74
6,577.0	27.00	90.40	6,377.9	879.9	-818.1	-711.0	5.18	5.10	2.08
6,672.0	33.20	91.60	6,460.0	879.0	-770.5	-663.8	6.56	6.53	1.26
6,768.0	42.80	92.50	6,535.6	876.8	-711.5	-605.5	10.02	10.00	0.94
6,864.0	48.90	90.20	6,602.4	875.3	-642.7	-537.3	6.58	6.35	-2.40
6,960.0	53.60	89.30	6,662.5	875.6	-567.8	-462.9	4.95	4.90	-0.94
7,051.7	60.00	88.44	6,712.7	877.2	-491.2	-386.6	7.02	6.98	-0.94
TPZ - 60° in curve - 1727'FSL, 2896'FEL, SEC.26									
7,056.0	60.30	88.40	6,714.8	877.3	-487.4	-382.9	7.02	6.98	-0.87
7,151.0	67.40	89.50	6,756.7	878.8	-402.2	-298.0	7.55	7.47	1.16
7,247.0	75.10	91.80	6,787.5	877.7	-311.4	-208.0	8.33	8.02	2.40
7,343.0	87.90	92.50	6,801.7	874.2	-216.7	-114.3	13.35	13.33	0.73
7,378.3	88.61	91.65	6,802.8	872.9	-181.5	-79.5	3.14	2.00	-2.42
LPL 1737'FSL, 2585'FEL, SEC.26									
7,438.0	89.80	90.20	6,803.6	871.9	-121.8	-20.3	3.14	2.00	-2.42
7,534.0	89.60	89.80	6,804.1	871.9	-25.8	75.1	0.47	-0.21	-0.42
Deepest TVD Drilled - 6804.08' TVD									
7,630.0	90.80	89.80	6,803.7	872.3	70.2	170.5	1.25	1.25	0.00
7,726.0	90.20	88.90	6,802.9	873.4	166.2	266.0	1.13	-0.63	-0.94
7,821.0	92.00	89.80	6,801.1	874.4	261.2	360.4	2.12	1.89	0.95
7,917.0	91.70	88.60	6,798.0	875.8	357.1	455.9	1.29	-0.31	-1.25
8,012.0	91.50	88.20	6,795.3	878.4	452.0	550.5	0.47	-0.21	-0.42
8,108.0	91.40	88.90	6,792.9	880.9	548.0	646.0	0.74	-0.10	0.73
8,203.0	91.10	91.60	6,790.8	880.4	642.9	740.3	2.86	-0.32	2.84
8,298.0	91.10	91.10	6,789.0	878.2	737.9	834.4	0.53	0.00	-0.53
8,394.0	90.40	90.90	6,787.8	876.5	833.9	929.5	0.76	-0.73	-0.21
8,490.0	90.10	90.50	6,787.3	875.4	929.9	1,024.7	0.52	-0.31	-0.42
8,586.0	89.80	90.00	6,787.4	874.9	1,025.9	1,120.0	0.61	-0.31	-0.52
8,681.0	89.50	89.10	6,788.0	875.7	1,120.9	1,214.5	1.00	-0.32	-0.95

Company:	PDC Energy Inc. DJ Basin	Local Co-ordinate Reference:	Well Bunting 26P-212
Project:	SEC.26-T5N-R65W	TVD Reference:	WELL @ 4672.0ft (Original Well Elev)
Site:	Bunting 5N65W26P Pad Sec.26-T5N-R65W	MD Reference:	WELL @ 4672.0ft (Original Well Elev)
Well:	Bunting 26P-212	North Reference:	True
Wellbore:	Bunting 26P-212 Wellbore #1	Survey Calculation Method:	Minimum Curvature
Design:	Bunting 26P-212 Wellbore #1	Database:	US_EDM

Survey										
Measured Depth (ft)	Inclination (°)	Azimuth (°)	Vertical Depth (ft)	+N/-S (ft)	+E/-W (ft)	Vertical Section (ft)	Dogleg Rate (°/100usft)	Build Rate (°/100usft)	Turn Rate (°/100usft)	
8,777.0	89.30	90.20	6,789.0	876.3	1,216.9	1,309.9	1.16	-0.21	1.15	
8,872.0	90.60	90.40	6,789.1	875.8	1,311.9	1,404.2	1.38	1.37	0.21	
8,968.0	90.40	90.20	6,788.2	875.3	1,407.8	1,499.5	0.29	-0.21	-0.21	
9,064.0	91.10	92.50	6,787.0	873.0	1,503.8	1,594.6	2.50	0.73	2.40	
9,159.0	91.00	91.80	6,785.3	869.5	1,598.7	1,688.4	0.74	-0.11	-0.74	
9,255.0	91.00	91.20	6,783.6	866.9	1,694.7	1,783.5	0.62	0.00	-0.63	
9,351.0	90.50	90.70	6,782.3	865.3	1,790.7	1,878.6	0.74	-0.52	-0.52	
9,446.0	90.50	90.40	6,781.5	864.4	1,885.6	1,972.9	0.32	0.00	-0.32	
9,542.0	90.40	89.80	6,780.7	864.3	1,981.6	2,068.2	0.63	-0.10	-0.63	
9,637.0	90.80	91.90	6,779.7	862.9	2,076.6	2,162.4	2.25	0.42	2.21	
9,733.0	91.00	91.90	6,778.2	859.7	2,172.6	2,257.3	0.21	0.21	0.00	
9,829.0	91.50	92.10	6,776.1	856.3	2,268.5	2,352.2	0.56	0.52	0.21	
9,924.0	90.60	91.40	6,774.4	853.4	2,363.4	2,446.2	1.20	-0.95	-0.74	
10,021.0	90.50	89.50	6,773.5	852.7	2,460.4	2,542.4	1.96	-0.10	-1.96	
10,116.0	90.80	89.00	6,772.4	853.9	2,555.4	2,636.9	0.61	0.32	-0.53	
10,212.0	89.50	89.70	6,772.1	855.0	2,651.4	2,732.4	1.54	-1.35	0.73	
10,308.0	90.00	91.40	6,772.6	854.1	2,747.4	2,827.6	1.85	0.52	1.77	
10,404.0	90.10	91.10	6,772.5	852.0	2,843.3	2,922.7	0.33	0.10	-0.31	
10,499.0	90.20	90.70	6,772.2	850.5	2,938.3	3,016.9	0.43	0.11	-0.42	
10,595.0	90.70	90.70	6,771.5	849.3	3,034.3	3,112.1	0.52	0.52	0.00	
10,691.0	89.40	91.10	6,771.4	847.8	3,130.3	3,207.3	1.42	-1.35	0.42	
10,744.0	89.73	90.71	6,771.8	847.0	3,183.3	3,259.8	0.97	0.63	-0.74	
WP #1 (Bunting 26P-212)										
10,786.0	90.00	90.40	6,771.9	846.6	3,225.3	3,301.5	0.97	0.63	-0.74	
10,882.0	90.70	90.20	6,771.3	846.1	3,321.3	3,396.8	0.76	0.73	-0.21	
10,978.0	91.40	89.80	6,769.5	846.1	3,417.3	3,492.1	0.84	0.73	-0.42	
11,073.0	89.80	89.10	6,768.5	847.0	3,512.3	3,586.6	1.84	-1.68	-0.74	
11,169.0	89.90	88.40	6,768.8	849.1	3,608.2	3,682.1	0.74	0.10	-0.73	
11,265.0	90.20	87.90	6,768.7	852.2	3,704.2	3,777.8	0.61	0.31	-0.52	
11,361.0	89.40	88.90	6,769.0	854.8	3,800.1	3,873.4	1.33	-0.83	1.04	
11,456.0	89.90	88.80	6,769.6	856.8	3,895.1	3,968.0	0.54	0.53	-0.11	
11,551.0	89.80	90.50	6,769.9	857.3	3,990.1	4,062.4	1.79	-0.11	1.79	
11,647.0	89.80	90.20	6,770.2	856.7	4,086.1	4,157.7	0.31	0.00	-0.31	
11,742.0	90.00	89.50	6,770.4	857.0	4,181.1	4,252.1	0.77	0.21	-0.74	
11,838.0	90.30	89.10	6,770.1	858.2	4,277.1	4,347.6	0.52	0.31	-0.42	
11,933.0	90.80	89.10	6,769.2	859.7	4,372.1	4,442.1	0.53	0.53	0.00	
12,028.0	91.10	88.90	6,767.6	861.3	4,467.1	4,536.6	0.38	0.32	-0.21	
12,124.0	91.80	89.30	6,765.2	862.8	4,563.0	4,632.1	0.84	0.73	0.42	
12,219.0	92.30	89.30	6,761.8	864.0	4,658.0	4,726.6	0.53	0.53	0.00	
12,314.0	91.40	89.80	6,758.7	864.7	4,752.9	4,821.0	1.08	-0.95	0.53	
12,409.0	89.90	89.10	6,757.7	865.6	4,847.9	4,915.4	1.74	-1.58	-0.74	
12,504.0	90.70	89.50	6,757.2	866.8	4,942.9	5,009.9	0.94	0.84	0.42	
12,600.0	89.30	89.50	6,757.2	867.6	5,038.9	5,105.4	1.46	-1.46	0.00	

Company:	PDC Energy Inc. DJ Basin	Local Co-ordinate Reference:	Well Bunting 26P-212
Project:	SEC.26-T5N-R65W	TVD Reference:	WELL @ 4672.0ft (Original Well Elev)
Site:	Bunting 5N65W26P Pad Sec.26-T5N-R65W	MD Reference:	WELL @ 4672.0ft (Original Well Elev)
Well:	Bunting 26P-212	North Reference:	True
Wellbore:	Bunting 26P-212 Wellbore #1	Survey Calculation Method:	Minimum Curvature
Design:	Bunting 26P-212 Wellbore #1	Database:	US_EDM

Survey										
Measured Depth (ft)	Inclination (°)	Azimuth (°)	Vertical Depth (ft)	+N/-S (ft)	+E/-W (ft)	Vertical Section (ft)	Dogleg Rate (°/100usft)	Build Rate (°/100usft)	Turn Rate (°/100usft)	
12,695.0	89.30	88.90	6,758.3	869.0	5,133.9	5,199.9	0.63	0.00	-0.63	
12,790.0	87.80	90.20	6,760.7	869.7	5,228.8	5,294.3	2.09	-1.58	1.37	
12,899.0	88.40	90.50	6,764.3	869.1	5,337.8	5,402.4	0.62	0.55	0.28	
12,994.0	90.90	91.10	6,764.9	867.7	5,432.7	5,496.6	2.71	2.63	0.63	
13,090.0	90.40	90.20	6,763.8	866.6	5,528.7	5,591.8	1.07	-0.52	-0.94	
13,186.0	92.20	88.90	6,761.7	867.4	5,624.7	5,687.2	2.31	1.88	-1.35	
13,282.0	91.40	89.80	6,758.6	868.5	5,720.6	5,782.7	1.25	-0.83	0.94	
13,377.0	91.30	90.20	6,756.4	868.5	5,815.6	5,877.0	0.43	-0.11	0.42	
13,473.0	92.00	90.20	6,753.6	868.1	5,911.6	5,972.3	0.73	0.73	0.00	
13,569.0	92.10	90.30	6,750.2	867.7	6,007.5	6,067.5	0.15	0.10	0.10	
13,664.0	91.10	90.40	6,747.6	867.1	6,102.5	6,161.8	1.06	-1.05	0.11	
13,760.0	89.50	90.50	6,747.1	866.4	6,198.5	6,257.0	1.67	-1.67	0.10	
13,856.0	90.40	89.30	6,747.1	866.6	6,294.5	6,352.4	1.56	0.94	-1.25	
13,952.0	89.30	90.40	6,747.4	866.8	6,390.4	6,447.8	1.62	-1.15	1.15	
14,048.0	89.30	90.50	6,748.6	866.1	6,486.4	6,543.1	0.10	0.00	0.10	
14,143.0	89.60	90.90	6,749.5	864.9	6,581.4	6,637.3	0.53	0.32	0.42	
14,239.0	89.00	89.10	6,750.6	864.9	6,677.4	6,732.6	1.98	-0.63	-1.88	
14,335.0	89.10	87.40	6,752.2	867.8	6,773.4	6,828.3	1.77	0.10	-1.77	
14,430.0	89.60	86.80	6,753.3	872.6	6,868.2	6,923.0	0.82	0.53	-0.63	
14,526.0	90.60	88.80	6,753.1	876.3	6,964.1	7,018.8	2.33	1.04	2.08	
14,622.0	91.20	88.80	6,751.6	878.3	7,060.1	7,114.3	0.63	0.63	0.00	
14,718.0	91.30	88.60	6,749.5	880.5	7,156.1	7,209.9	0.23	0.10	-0.21	
14,814.0	91.70	88.60	6,747.0	882.8	7,252.0	7,305.4	0.42	0.42	0.00	
14,910.0	91.70	90.20	6,744.2	883.9	7,348.0	7,400.9	1.67	0.00	1.67	
15,006.0	92.20	90.00	6,740.9	883.7	7,443.9	7,496.1	0.56	0.52	-0.21	
15,097.0	91.80	89.50	6,737.7	884.1	7,534.8	7,586.5	0.70	-0.44	-0.55	
15,155.0	91.80	89.50	6,735.9	884.6	7,592.8	7,644.2	0.00	0.00	0.00	
BHL 1790'FSL, 100'FEL, SEC.25										

Design Targets										
Target Name	Dip Angle (°)	Dip Dir. (°)	TVD (ft)	+N/-S (ft)	+E/-W (ft)	Northing (usft)	Easting (usft)	Latitude	Longitude	
SHL 850'FSL, 2405'FEL - hit/miss target - Shape - survey hits target center - Point	0.00	0.00	1.0	0.0	0.0	1,377,127.83	3,242,529.85	40.365350	-104.629620	
BHL 1790'FSL, 100'FEL - survey misses target center by 4.5ft at 15155.0ft MD (6735.9 TVD, 884.6 N, 7592.8 E) - Point	0.00	0.00	6,740.0	882.8	7,593.3	1,378,085.07	3,250,113.84	40.367770	-104.602370	

Company:	PDC Energy Inc. DJ Basin	Local Co-ordinate Reference:	Well Bunting 26P-212
Project:	SEC.26-T5N-R65W	TVD Reference:	WELL @ 4672.0ft (Original Well Elev)
Site:	Bunting 5N65W26P Pad Sec.26-T5N-R65W	MD Reference:	WELL @ 4672.0ft (Original Well Elev)
Well:	Bunting 26P-212	North Reference:	True
Wellbore:	Bunting 26P-212 Wellbore #1	Survey Calculation Method:	Minimum Curvature
Design:	Bunting 26P-212 Wellbore #1	Database:	US_EDM

Survey Annotations				
Measured Depth (ft)	Vertical Depth (ft)	Local Coordinates		Comment
		+N/-S (ft)	+E/-W (ft)	
7,051.7	6,712.7	877.2	-491.2	TPZ - 60° in curve - 1727'FSL, 2896'FEL, SEC.26
7,534.0	6,804.1	871.9	-25.8	Deepest TVD Drilled - 6804.08' TVD

Checked By: _____ Approved By: _____ Date: _____